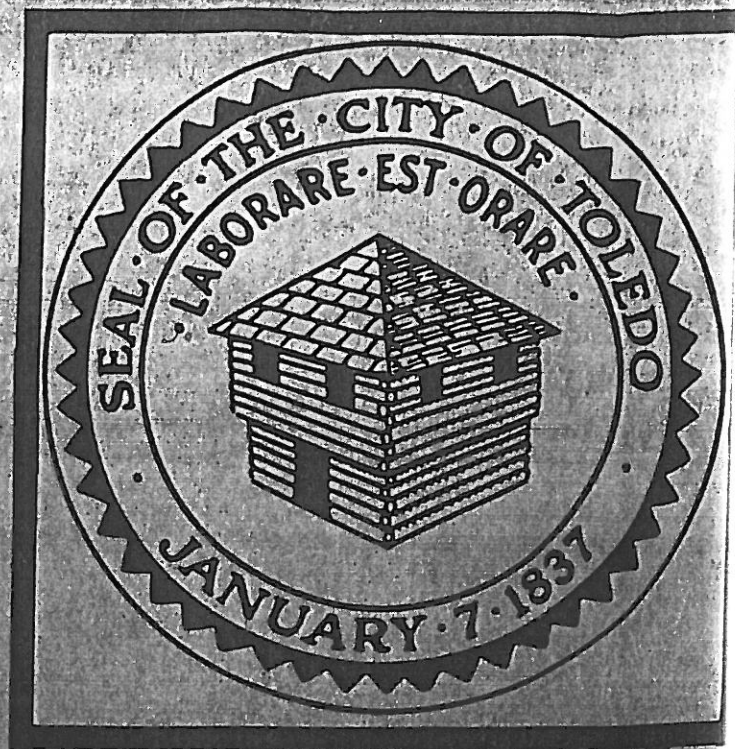


Division  
of  
Police



CITY OF TOLEDO

1971  
Annual  
Report

# CITY OF TOLEDO OHIO



James B. Daken  
City Manager

## DIVISION OF POLICE

SAFETY BUILDING  
525 NO. ERIE STREET  
TOLEDO, OHIO 43624

ROBERT J. DUCK  
CHIEF OF POLICE

LEADS OHQ48Q7



To: Mr. A. J. Bagdonas, Acting Director of Public Safety  
From: Mr. Robert J. Duck, Chief of Police  
Subject: 1971 Annual Report of the Division of Police

In compliance with the provisions of Section 107 of the Charter of the City of Toledo, I herewith submit the 1971 Annual Report of the Division of Police, summarizing the activities for the year.

When I assumed the position of Chief of Police at the beginning of the year of 1971, I stated it was my hope that the division would, under my command, provide fair, honest, humane, impartial and equal law enforcement to all citizens of the community regardless of race, creed or economic status. I further stated I hoped to increase our courtesy toward the public. With these ends in view, several changes in our method of operation were instituted.

The citizen-complaint procedure was redesigned to expedite the complaint process and to involve first line supervision in the investigation so as to make this level of command aware of the complaints against personnel under their supervision and control. Further, a sergeant was assigned to supervise the booking process and the men's detention facility. This latter move has reduced complaints of improper handling of prisoners and their property practically to zero.

A suggestion box and a Rumor Evaluation Office were instituted in the newly created Special Services Bureau. Also within this bureau intensified activity has been directed toward planning and research, surveys and formulation of programs and applications for federal funding.

From May 6 to May 20, 1971, a dog patrol was operated to fill the void when the City of Toledo and the Humane Society were without a contract for the enforcement of the Dog Leash Law.

On August 26, 1971, the Metro Drug Unit began operation with eight of the sixteen members being furnished by our division. Further, our Crime Laboratory received a federal grant to purchase additional drug testing equipment and received a forensic chemist to process suspected drugs for the area.

Although the division lost its combat pistol range to make way for a new municipal golf course, the division has been able to provide marksmanship training through the cooperation of local Federal officials making their indoor range available, and the Adams Conservation Gun Club donating the facilities for training that requires outdoor facilities.

This division, with the cooperation of the University of Toledo, instituted a ride program whereby externs nearing completion of their course of studies at the Police Science School of the Toledo University Community College and senior law students from the University's Law School ride with patrol units to observe law enforcement in action.

On September 20, 1971, six patrol wagons were removed from the street as the other patrol units had protective shields installed so as to be able to safely transport most prisoners, thereby reducing the time spent in transporting and booking prisoners.

On October 1, 1971, a voluntary physical fitness program was instituted and the response from the men has been tremendous. A debt of gratitude is owed to the Reverend William Martin of the Holy Spirit Seminary for donating the use of the facilities and to Mr. Dick Torio for participating in designing the program.

On October 22, 1971, the Selective Patrol Units were placed in service under the direction of Captain Scoble with the mission of combating crime in the high crime areas. They function during the peak hours of criminal activity and plan their operations by analyzing weekly computer printouts, the daily report and radio activity.

On November 1, 1971, the reliefs of the patrol function were realigned so as to have the best ratio of manpower to criminal activity.

As the year ended, a concentrated employment program grant allowed the division to return ten men to the street and to increase our investigator efficiency by providing the division with four civilian telephone operators, nine civilian Record Bureau clerks and four stenographers.

In a year of great austerity with a lay off of police officers hanging over our heads and a strength well below our authorized strength, we have been able to accomplish much. The Toledo Police Division was down sixty-seven (67) men at year's end. With additional men and equipment, I feel confident greater results can be achieved.

Respectfully submitted,



Robert J. Duck,  
Chief of Police

RJD:bg

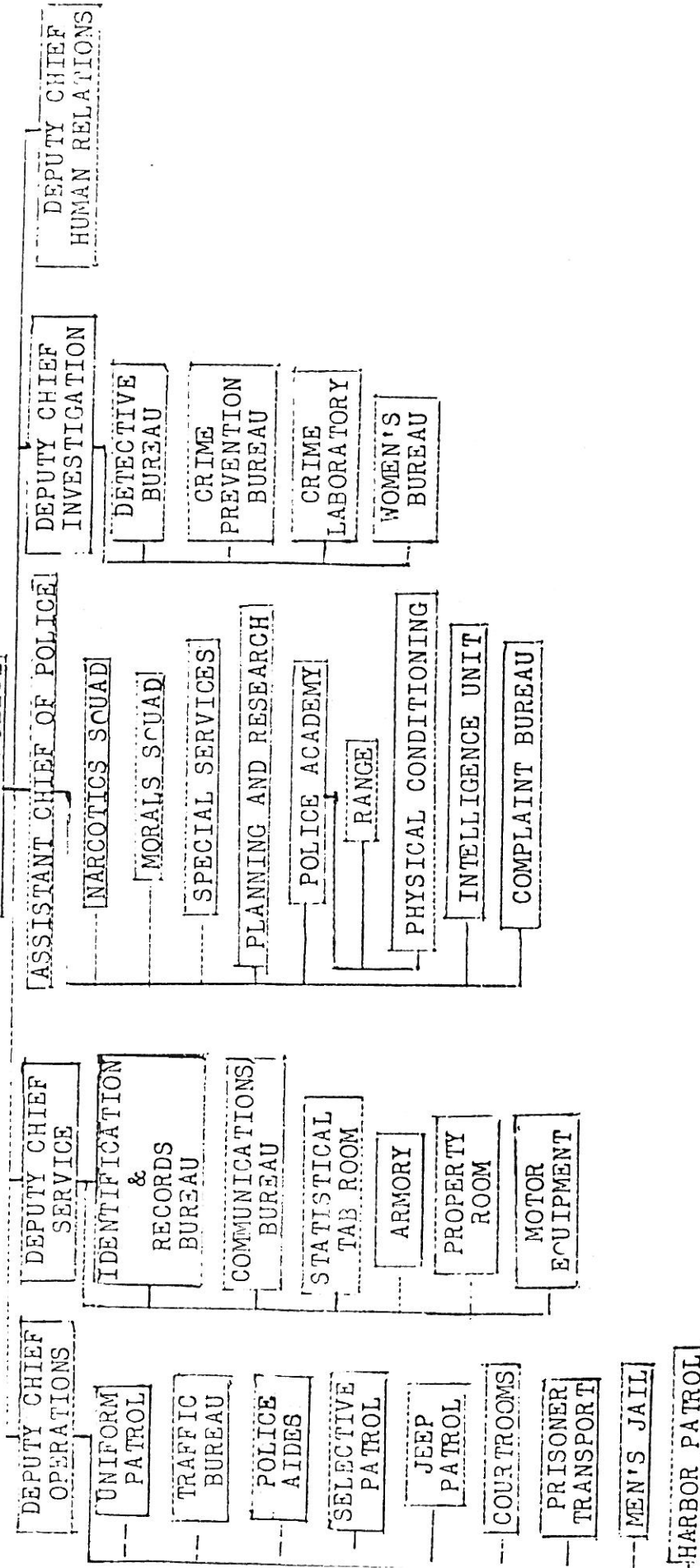
I N D E X

Administrative Staff and Unit Command - - - - -	4	Persons Charged	
Academy - - - - -	14-19	Age Groups - - - - -	-31-32
Arrests		Race - - - - -	-31-32
By Participating Units - - - - -	33	Sex - - - - -	31-32
Municipal Court -		Property Stolen and Recovered - - - - -	24
Institutions Sentenced - - - - -	34	Property Room - - - - -	26
Municipal Court Sentences - - - - -	35	Traffic Bureau	
Municipal Court Leniency - - - - -	36	Type of Accident - - - - -	50
Municipal Court Dispositions - - - - -	37	Street Classification - - - - -	50
Bureau of Identification and Records - - - - -	12	Age of Casualty - - - - -	50
Bureau of Special Services and Information - - - - -	9-13	Time - - - - -	51
Communications Bureau - - - - -	43	Directional Analysis - - - - -	51
Crime Prevention Bureau - - - - -	47	Pedestrian Actions by Age - - - - -	52
Departmental Juvenile Arrests Cited and Adjusted - - - - -	28	Age & Sex of Driver - - - - -	52
Juvenile Arrest-Sex and Age - - - - -	29-30	Residence of Driver - - - - -	52
Missing Persons - - - - -	48	Contributing Circumstances - - - - -	52
Crime Detection Laboratory - - - - -	44	Type of Motor Vehicle - - - - -	52
Homicide - - - - -	45	Road Surface Condition - - - - -	52
Known Offenses		Kind of Location - - - - -	52
Census Tract Map - - - - -	20	Light Condition - - - - -	52
Month of Occurrence - - - - -	22	Statistical Recap - - - - -	49
Property Value - - - - -	23-24	Total Revenue (Traffic Bureau)- - - - -	53
Class I Offenses - - - - -	38	Moving Violation Arrests Tickets Issued)- - - - -	54
Class I and II Offenses - - - - -	39-40		
Class I and II Offenses (Juv.) - - - - -	41		
Rate Per Population - - - - -	27		
Crime Index Trend-Local - - - - -	21		
Value of Property Stolen- by Type of Crime - - - - -	25		
Letter of Transmittal			
Morals Squad - - - - -	46		
Organizational Chart - - - - -	3		
Personnel			
Promotions - - - - -	5		
Retirements - - - - -	7		
Pensioners - deceased - - - - -	8		
Resignations - - - - -	6		
Active members - deaths - - - - -	7		
Reinstatements - - - - -	6		



ORGANIZATION CHART

TOLEDO POLICE DIVISION  
DIRECTOR OF PUBLIC SAFETY  
[CHIEF OF POLICE]



ADMINISTRATIVE STAFF AND UNIT COMMANDROBERT J. DUCKCHIEF OF POLICE

Deputy Chief - Services	William G. Wiener
Deputy Chief - Operations	Thurman L. Leighton
Deputy Chief - Human Relations Bureau	Erwin P. Oehlers
Deputy Chief - Investigations	Marion A. Davey
Captain - Uniform	Robert E. Gray
Captain - Uniform	Michael D. Liwo
Captain - Uniform	Elwood E. Dernlan
Captain - Uniform Selective Patrol Units (Operation began 10/22/1971)	Walter L. Scoble
Captain - Director of Training - Planning and Research	Edward C. Sobczak
Captain - Crime Prevention Bureau	Kenneth C. Rebensal
Captain - Morals & Narcotics Squads	Norbert R. Declercq
Captain - Crime Detection Laboratory	Edward E. Clancy
Captain - Detective Bureau - Felony	Raymond C. Vetter
Captain - Detective Bureau - Shift	John C. Weinandy
Captain - Detective Bureau - Shift	William J. Gray
Captain - Detective Bureau - Shift	Thomas C. O'Leary
Lieutenant - Traffic Bureau	Sidney S. O'Dell
Lieutenant - Communications Bureau	Steven Kowaleski
Secretary of Police -	Cornelius O. Petersen,
Lieutenant - Public Services and Information	James B. Weis

P R O M O T I O N S1971

January 1, 1971	Robert J. Duck	Chief of Police
January 18, 1971	Arthur Ickes	Sergeant
January 18, 1971	Joseph Ward	Sergeant
January 19, 1971	Norbert Declercq	Captain
May 12, 1971	Robert Meehan	Captain
May 12, 1971	Walter Scoble	Captain
May 12, 1971	Larry Armstrong	Sergeant
August 24, 1971	Edwin Palinski	Sergeant
October 14, 1971	Robert Cothern	Sergeant
October 14, 1971	Gerald Gerding	Sergeant

R E S I G N A T I O N S1971

February 16, 1971	Edward Coleman	Patrolman
February 19, 1971	William Rhodes	Patrolman
March 5, 1971	Donald Palen	Patrolman
March 20, 1971	Charles Stelnicki	Patrolman
March 21, 1971	Robert Lupien	Patrolman
March 26, 1971	James Caygill	Patrolman
April 5, 1971	Gerald Klewer	Patrolman
May 8, 1971	Freddie King	Patrolman
May 8, 1971	James Porter	Patrolman
May 15, 1971	Rodney Houchins	Patrolman
May 21, 1971	Lawrence Jeziorowski	Patrolman
June 18, 1971	Glen Hammer	Patrolman
July 29, 1971	David Januszewski	Patrolman
August 8, 1971	John Speer	Sergeant
August 19, 1971	Robert Paquin	Patrolman
August 25, 1971	Donald Stewart	Patrolman
September 1, 1971	Donald Schwanbeck	Patrolman
September 1, 1971	Donald Perkins	Patrolman
October 16, 1971	Kenneth Schemenauer	Patrolman
November 1, 1971	Richard Haberstock	Patrolman
December 31, 1971	Joseph DePasquale	Patrolman

R E I N S T A T E M E N T S1971

April 27, 1971	Charles Stelnicki	Patrolman
May 6, 1971	Joseph DePasquale	Patrolman
May 21, 1971	Donald Stewart	Patrolman
May 21, 1971	James White	Patrolman
August 13, 1971	James Porter	Patrolman
September 1, 1971	Donald Palen	Patrolman



R E T I R E M E N T S1971

April 1, 1971	Charles Knight	Sergeant
July 20, 1971	John Joseph Dowling	Sergeant
December 14, 1971	Orpha Mattox	Sergeant
December 31, 1971	William G. Wiener	Deputy Chief
December 31, 1971	Roy C. Shelton	Captain
December 31, 1971	Clair W. Fauble	Lieutenant
December 31, 1971	Ernest Shea	Lieutenant
December 31, 1971	Charles T. DuShane	Sergeant
December 31, 1971	Chad Hennessy	Sergeant
December 31, 1971	Leo L. Wonderly	Patrolman

D E A T H S

November 19, 1971	Ronald Schaber	Sergeant
November 25, 1971	Robert Collins	Patrolman
December 22, 1971	Leonard Voorhees	Patrolman

DECEASED PENSIONERS1971

January 7, 1971	Joseph E. Hoyer
January 15, 1971	Ella Langendorf
February 15, 1971	Arthur L. Beseske
April 4, 1971	Frank Richter
April 6, 1971	Thomas H. Case
April 7, 1971	Adam L. Dlugiewicz
April 7, 1971	Louis W. Grzegorek
April 9, 1971	Archie M. Best
April 11, 1971	Edward E. Meeker
May 6, 1971	Andrew J. Iwinski
May 17, 1971	Stanley A. Kina
May 21, 1971	Donald Haecker
May 29, 1971	August H. Pier
May 31, 1971	Arthur Eggert
June 21, 1971	George A. Fackelman
June 24, 1971	Howard M. Tripp
October 8, 1971	Harry G. Steele
October 23, 1971	Harry Sherfield

## BUREAU OF SPECIAL SERVICES AND INFORMATION

The Bureau of Special Services and Information was established by Chief Robert Duck in February, 1971. In addition to continuing and supervising the Police Aide Program, many new duties and programs have been added to the duties of this Bureau. These include:

- Planning and Research
- Rumor Evaluation
- Suggestion Program
- Part Time School Crossing Guards
- Summer Park Aide Program
- Letters to Citizens
- Police Division Commendation Program
- Replies to Inquiry Letters
- Model Cities liaison .
- Police oriented schools
- 911 Program
- Centrex Program
- Citizens Committee for Efficient Government
- Regional Planning Unit
- Personnel Upgrading for Planning
- Federal Government Grants - Omnibus Crime Bill

POLICE AIDES

The complement of sworn Police Aides has decreased from thirty (30) in January, 1971 to twenty-one (21) as of December, 1971. No new appointments were made to this Program during the year. During the year, the Aides issued 28,778 parking violation tags. They guarded twenty-five (25) school crossing corners from January until June and thirteen from September until December 31, 1971. The difference is due to the implementing of a part-time guard program as explained below. Aides were also assigned to the Art Museum and to the adult swimming pool areas during the summer.

PART-TIME SCHOOL CROSSING GUARDS

The above program was initiated in September of 1971 with the employment of fourteen (14) ladies to guard school crossings on an as-needed part-time basis. The salary of a part-time guard is \$1,836. as compared to \$9,200. for a full time police aide. This amounts to a very substantial saving in the general fund.

SUMMER PARK AIDE PROGRAM

A federal Discretionary Grant for \$24,000. was received to subsidize this Program and twenty-nine (29) ladies were employed and assigned to the various recreational areas of the city. Because of their presence, the number of incidents in these areas decreased drastically. All of the \$24,000. was not used due to a curtailment in the City's Recreation Program and we have applied for an extension on the grant.

FEDERAL GOVERNMENT GRANTS - OMNIBUS CRIME BILL

Federal Grants under the Omnibus Crime Bill were received during 1971 for the following projects:

Toledo Police Area Communications Network  
Police and Fire Reporting Boxes  
Police Academy Library

An application has been submitted for a grant for Personnel Upgrading for Planning, and one has been written to establish a Word Processing Center in the Police Division.

Several projects are in the formative stage including:

Data Processing	Instant re-play (video-tape)
K-9 Patrol	Police Helicopters
Police Legal Advisor	Mobile Police Van
One-man Patrol Units	911 Program
Police Cadet Program	Big Brothers Program
Alcohol De-toxification Unit	



REGIONAL PLANNING UNIT

In May, 1971, the Department of Urban Affairs, State of Ohio, issued a directive on distribution of Federal Funds which called for the formation of a Regional Criminal Justice Planning Unit in Lucas County. Forming this unit which entailed the writing of ordinances, resolutions, by-laws, and numerous conferences required many days of work. The final project was sent to Columbus on February 8, 1972.

SUGGESTION PROGRAM

A suggestion Program was instituted by Chief Duck during the past year and members of the Police Division have responded well. All suggestions are acknowledged by written signed communication and reviewed as to merit and possible implementation by the Chief and Staff. Several changes in procedures have resulted from this program.

RUMOR EVALUATION

This program was established to find the source of; refute or confirm; and answer questions and rumors. A sincere effort is made to answer all questions, if possible, and several stories, completely false have been stopped by this program.

CITIZENS LETTERS

On numerous occasions citizens of our community have given valuable assistance to the Police Division. In all instances where the name of the good citizen can be obtained, a letter of thanks is sent from the Division over the signature of the Chief.

IN-KIND CONTRIBUTION REPORTS AND FEDERAL GRANT FISCAL AND PROGRESS REPORTS

Most federal grants require in-kind contribution reports quarterly and all require either monthly or quarterly fiscal and progress reports. These are compiled and submitted by this bureau.

SCHOOLS FOR UPGRADING OF POLICE PERSONNEL

Arrangements for attendance at various schools by members of the Division were made by this Bureau. Members of the Bureau also attended a school for management personnel and two (2) on federal government funding.

## PLANNING AND RESEARCH

More man hours have been spent in this area than in any other during the past year. The planning and research necessary to write applications for government grants is very great. In addition inquiries to twenty-five (25) or more other police jurisdictions were made on the following programs:

Police Helicopters  
K-9 Patrol  
One-man Patrol Units

Police Division Bulletin  
Police Division Computer  
Four-day Work Week

All inquiries from outside police jurisdictions in the area of Planning and Research were answered.

Arrangements were made for two companies, Motorola and General Electric, to give demonstrations of their communication's equipment.

Trips were made to Detroit, Cleveland, Columbus, Akron and Cincinnati in the planning for the new communication system. Several meetings were held with persons interested in the computer operation, K-9 patrol, helicopters, etc.

It is the feeling of this bureau that the area of Planning and Research should be enlarged and more staff added.

## POLICE DIVISION COMMENDATION PROGRAM

Commendations for two-hundred fifty (250) members of the Division were written. These letters for exceptional efforts are a great booster of morale. A copy is sent to the person involved and one is placed in the personnel file.

Twenty-two (22) officers and one (1) police aide were honored by the Toledo-Lucas County Safety Council for outstanding service to their fellow man, and two (2) officers were likewise honored by the Exchange Club of Trilby, Ohio.

## CITIZENS COMMITTEE FOR EFFECTIVE GOVERNMENT

This Bureau acted as the liaison between the Citizens Committee for Effective Government and the various bureaus of the Police Division.

MISCELLANEOUS SERVICES

Members of the Bureau have been appointed by the Division Administration and the City Manager to serve on various committees such as the feasibility study for the Centrex telephone system and the "911" system.

Also attended were Model Cities evaluation meetings, Toledo Metropolitan Area Council of Government Seminars, meetings with union representatives and numerous meetings with administration officials.

## TOLEDO POLICE ACADEMY

STAFF - NEW ASSIGNMENTS

The expanded scope of the work program and projects undertaken, necessitated augmentation of the staff by addition of a Sergeant and Patrolman in October 1971. Both officers were assigned to supervise the newly created Physical Conditioning Program, inaugurated on October 4, 1971.

STAFF TRAINING

Academy staff officers successfully completed the following courses: Alcohol Studies at Rutgers University -Police Supervisor's Course at Ohio State Highway Patrol Academy -Firearms Training Course sponsored by Ohio Peace Officers Training Council and conducted by the FBI at Camp Perry.

PHYSICAL CONDITIONING PROGRAM

The Chief of Police directed the Academy staff to design and make operational a physical conditioning program for members of the police division. Since no municipal gymnasium is available, negotiations were conducted with the administrator of the Holy Spirit Seminary. A cost free agreement for use of the modern facility was arranged. In addition, the professional consultant services of a nationally renowned physical conditioning expert were obtained in the interest of providing a public service.

The Academy solicited the endorsement and support of the Toledo Police fraternal Organizations. The response was very gratifying and made possible the acquisition of quality equipment for the program.

Numerous conferences with the Departments of Welfare and Recreation resulted in accumulation of technical knowledge and donations of needed equipment which made possible full implementation of this physical activity.

The schedule permits continuous physical conditioning for police personnel. In the three months of operation during 1971, two hundred and seventy (270) police employees have participated one thousand six hundred and fifty-one (1651) times. The benefits of this activity have resulted in improved health, increased physical agility and endurance, which will in turn reflect gains in job performance.



## PLANNING PROJECTS

The initial stages of structuring a Manual of Operating Procedures for division wide use has been initiated, with progress being made as priority of duties and time permits. This project requires researching the legal authority for procedures being delineated and for alternate methods recommended in executing various police functions.

Preliminary planning is in progress to develop and coordinate Emergency Plans with operational flexibility, which would be utilized during civil disturbances and when natural disasters occur. Resource material is being accumulated to determine the most feasible plans consistent with logistical projection in a time-phase transitional period. Liaison has been established with the Ohio National Guard 585th M.P. Company, concerning coordination of duties and operational procedures during emergency situations. This military unit was provided with pertinent material and three hours of instructions relating to functions and liaison with the police division during civil disturbances.

In compliance with Ohio Peace Officer Training Council curriculum requirements, a Revision of Lesson Plans, in the area of Human Relations, is in progress to meet standards for primary recruit training. Changing court decisions and the creation of new legislation makes it mandatory that lesson plans be reviewed and revised in order to provide current and authoritative instruction during recruit and in-service training.

## RESEARCH

The Academy staff researched numerous patrolman Application Forms in the interest of saving time and finances during back-ground investigations. A new, comprehensive Patrolman's Application form was devised as a result of the research. This form was adopted by the Civil Service Commission and will be used by the Academy staff for investigation of police applicants.

Studies were conducted of height standards for police recruits in fifty municipalities throughout the U.S., and a report was submitted to the chief of police.

A survey was made of qualifications for Police Training Personnel, and job descriptions were formulated as guides in selecting personnel to fill future vacancies.

Legal aspects of pornography were researched and a report was submitted to the chief.

An evaluation of various police complaint forms for communications officers use was made. A sample form was devised and forwarded to the communications administrative officer,

The staff attended a demonstration of an armored police car, and appraised its value for division use.

Statistics and data were researched for eight (8) questionnaires submitted by police divisions and educational institutions relating to recruit training, qualifications of recruits, and various police functions.

The staff assisted nine (9) students with technical material, not available elsewhere, for academic studies in law enforcement.

The Academy personnel compiled specifications and prices for a mobile van to be used for Recruitment and Human Relations activities, and for implementation of the Academy Library.

A report was also prepared to justify additional personnel for expansion of the Narcotics Squad. This data was used in an application for Federal Grants.

#### CRIMINAL INVESTIGATION COURSES

The Academy staff initiated administrative procedures to organize, structure, prepare lesson outlines, secure instructors, supplies, and correlate schedules with bureau commanders to conduct a twelve weeks Criminal Investigation Course. From February 9th to May 28th, 1971, three investigative courses were programmed. There was an enrollment of one hundred and fifty-four officers, and one hundred passed the course. The Academy designed and secured the printing of certificates for graduates of the course.

#### POLICE INSTRUCTOR COURSE

The Academy staff made arrangements with the Ohio Department of Vocational Education to provide a course for training of Police Instructors. A State of Ohio specialized instructor conducted a course from October 18th through the 22nd at the Police Academy, without cost to the city. Division bureau heads selected thirteen (13) officers, who attended the course and received instructor certificates entitling them to teach police subject matter in law enforcement academies. Two staff members of the Toledo Police Academy completed the course.

#### FIREARMS TRAINING-CONTINUOUS PROGRAM

Since the Police Division was deprived of a firearms range in 1970, it became necessary to survey potential range sites in preparation for a firearms training program. Negotiations were conducted with the U. S. General Services Administration for the use of the new Federal Bldg. indoor range. A no-cost lease was signed by municipal and federal officials for use of the government range. As a result of this agreement, the Academy devised firearms training methods which provide versatility and are effective to meet modern conditions consistent within the limitations of the range. Range officers for each relief were provided with printed instructions concerning firing techniques and range safety rules.

Research and experimentation was necessary to secure adequate targets at minimal cost as well as target ammunition. This program is designed to maintain marksmanship skills and firearms safety procedures for the officer's safety and to protect the city from civil liability in the use of firearms by its officers. Each officer below the rank of deputy chief is required to participate in a variety of firearms exercises once every third month throughout the year.

#### SPECIALIZED WEAPONS TRAINING

In order to provide a balanced course of firearms training, which will enable division members to meet and deal effectively with any emergency situation, the academy staff conducted a survey to locate a range suitable for carbine, shotgun, and chemical warfare training. An inspection of many sites resulted in a decision to request the Adams Conservation Club for permission to utilize their range for heavy weapons and gas exercises. The Academy conducted negotiations with Adams Conservation Club officials which culminated in the signing of a no-cost lease between the City of Toledo and club officers, for use of their range by the police division. The Academy staff procured material and constructed targets for instructional purposes. Shotgun and carbine training began on May 10th, 1971. Practice and instruction in this phase of firearms will continue until all uniformed personnel have completed the course.

#### CHEMICAL AGENTS AND RELATED DEVICES TRAINING COURSE

The Academy staff has prepared lesson plans, secured equipment, and devised schedules to conduct a course in the use of chemical agents during civil disturbances and in applicable criminal offense situations. The course will include classroom studies and practical field exercises for uniformed command officers.

#### LIBRARY

The Academy staff, cooperating with the Toledo-Lucas County Library, compiled a list of police science texts used by the Civil Service Commission in promotional examinations. The public library purchased the publications and made a distribution through its branches to supplement our limited number of books.

One hundred and five officers borrowed books from the Academy Library. The Academy purchased one hundred and thirteen police science publications for local and area officers. The staff reviewed and purchased twelve police texts to augment the library resources.

The Academy made thirty film loans to members of the division who used films on assignments for viewing by public organizations, schools and area law enforcement officers. Two films were previewed and purchased for use as training aids. The staff also video-taped two reels on the subject of Evidence which consists of a lecture presented by an assistant Lucas County prosecutor. This material will be used for future training purposes.

CONFERENCES - AGENCY AND SUBJECT

The Academy director participated in the following conferences as a representative or assistant to the police chief:

Council of Governments - Police films

Law Enforcement Planning Agency - Columbus, Police Funds

Flower Hospital - Bomb disposal

Municipal Officers - Canton, Computer data

Municipal Officers - Avon Lake, Urban Affairs

LEAA - Columbus, Federal Grants

Ford Foundation - Toledo, Grants for Police Projects

Toledo Health Dept. - Alcohol Rehabilitation

Mayor's Conference - Akron, LEAA Funds

Toledo Chamber of Commerce - Industry - Business Survey

Toledo Board of Education - Training

Lucas County Mental Health Board - Mental Health

PUBLIC INFORMATION - LECTURES AND PROGRAMS

The Academy staff lectured, provided printed material and/or showed films to the following organizations at their request:

Y.W.C.A. - Lecture, "Self-Protection"

Council of Governments Seminar - Lecture, "Use of Force"

Rogers, McTigue, Woodward High Schools - "Police Careers"

Bowling Green University - Sociology Class - moderator,  
"Police Problems"

Council of Governments Seminar - Lecture, "Law Enforcement"

Channel 30 TV - Taped program, "Police Training"



Half Way House - Lecture, "Alcoholism"

Rotary Club - Oak Harbor - Lecture, "Police Functions & Training"

Toledo Women's Club - Lecture, "Self-Protection"

Owens Illinois Company - Lecture, "Self-Protection" (800 employees attended)

Material obtained for Toledo Police Historical Display

#### MISCELLANEOUS ACTIVITIES

Staff members of the Academy programmed material used in audio-visual instruction of newly appointed Park Aids.

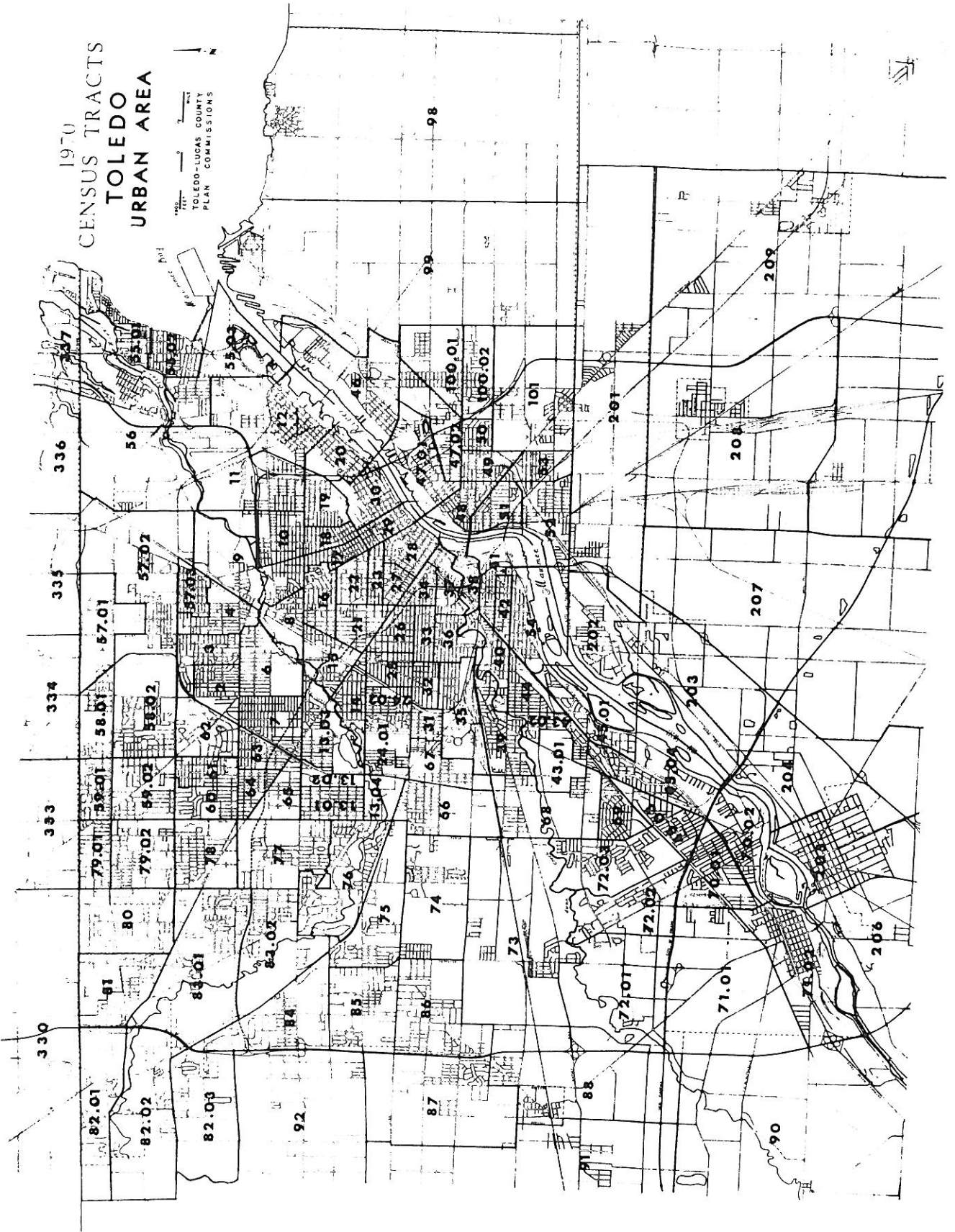
Academy equipment was prepared and assistance provided for in-service training of Detective Bureau personnel.

The Academy facilities were used for a demonstration of communications equipment.

The Academy staff answered correspondence from police departments relating to training, local procedures, policy; and provided material and/or information to educational and government agencies concerning our division.

Inquiries are answered daily relating to qualifications for police careers and employment opportunities.

The staff reviews and catalogs publications subscribed to by the Academy for use in research and training.



CRIME INDEX TREND (LOCAL)

The following Class 1 Known Offenses are set out to show what offenses have changed in volume, the percent of that change and the percent of cases cleared by arrest compared with the previous year.

			<u>Increase +</u> <u>Decrease -</u>	<u>Cleared by</u> <u>-Arrest</u>	
	<u>1971</u>	<u>1970</u>		<u>1971</u>	<u>1970</u>
1. Murder-NonNegligent Manslaughter	29	29		75.9	89.7
2. Negligent Man- slaughter	13	15	-13.3 %	100.0	86.7
3. Forcible Rape	139	91	+52.7 %	51.1	68.1
4. Robbery	1093	873	+25.2 %	33.1	33.6
5. Aggravated Assault	487	353	+37.9 %	75.8	89.8
6. Burglary-Breaking and/or Entering	5297	5116	+ 3.5 %	24.7	29.9
7. Larceny, \$50 & Over, Value	5153	4337	+18.8 %	11.9	12.3
8. Larceny, Under \$50 Value	8071	8710	- 7.3 %	28.2	26.4
9. Auto Theft	<u>1699</u>	<u>1531</u>	<u>+10.9 %</u>	<u>31.4</u>	<u>33.4</u>
TOTAL (CLASS 1)	<u>21981</u>	<u>21055</u>	<u>+ 4.4 %</u>	<u>25.3</u>	<u>26.5</u>

KNOWN OFFENSES BY MONTH - 1971

NAME	JAN.	FEB.	MARCH	APRIL	MAY	JUNE	JULY	AUG.	SEPT.	OCT.	NOV.	DEC.	TOTAL
FORCE	8	4	2	1	5	4	6	9	2	4	3	1	49
ASSAULT TO ATTEMPTS	8	4	5	5	12	16	12	7	12	15	7	10	90
TOTAL	8	4	7	6	10	16	18	16	14	19	10	11	139
ROBBERY	65	58	35	63	54	48	64	70	68	65	25	57	672
HIGHWAY, STREET, ETC.	16	9	11	15	6	13	11	6	13	21	34	38	193
COMMERCIAL HOUSE	5	2	3	3	4	7	5	3	17	5	4	5	63
GAS STATION	1	-	-	-	-	-	-	-	5	-	-	1	7
CHAIN STORE	12	7	10	6	7	3	11	6	9	7	2	9	89
RESIDENCE	-	-	-	-	-	-	-	-	1	-	-	1	4
FANK -	4	5	5	7	2	2	6	6	1	1	-	10	65
MISCELLANEOUS	103	81	64	94	73	74	97	92	122	99	73	121	1093
BURGLARY	173	117	127	156	184	140	204	201	199	233	166	238	2138
RESIDENCE -DWELLING	73	63	67	81	108	110	151	95	97	119	73	74	1111
1-NIGHT	19	15	4	1	-	-	-	23	-	-	15	-	77
2-DAY	144	126	100	141	146	140	134	174	153	236	137	153	1784
3-UNKNOWN	2	5	10	9	7	3	80	11	5	9	3	3	147
TOTAL	10	8	1	388	445	393	569	518	454	597	401	468	5297
LARCENY - VALUE	271	267	371	401	528	432	411	591	412	513	483	473	5153
OVER \$50	379	374	375	491	564	630	605	759	562	626	546	548	6459
\$5 TO \$50	111	109	127	115	117	125	121	149	127	168	149	194	1612
UNDER \$5	761	750	873	1007	1209	1187	1137	1499	1101	1307	1178	1215	13224
TOTAL	7	4	8	13	8	9	12	17	6	8	7	8	107
LARCENY - NATURE	13	12	16	13	15	12	13	18	19	30	28	19	208
POCKET PICKING	97	113	134	150	128	131	120	132	138	188	192	184	1707
PURSE SNATCHING	105	107	124	125	162	132	125	194	167	215	186	244	1886
SHOPLIFTING	251	244	244	270	333	254	214	367	237	287	347	280	3328
THEFTS FROM AUTOS	18	18	34	129	177	239	293	323	200	180	62	16	1689
THEFTS -ACCESSORIES-	199	198	189	164	182	190	146	223	159	200	240	209	2299
BICYCLES	8	5	11	3	7	3	8	5	4	13	3	16	86
FROM BUILDINGS	63	49	113	140	197	217	206	220	171	186	113	16	2299
FROM CCIN-OPR. MACH.	761	750	873	1007	1209	1187	1137	1499	1101	1307	1178	1215	13224
ALL OTHER	118	108	140	158	127	155	139	129	156	180	130	159	1699
TOTAL	118	108	140	158	127	155	139	129	156	180	130	159	1699

VALUE OF PROPERTY STOLEN PER MONTH BY TYPE OF CRIME FOR 1971

	JAN.	FEB.	MARCH	APRIL	MAY	JUNE	JULY	AUG.	SEPT.	OCT.	NOV.	DEC.	TOTAL
<b>ROBBERY</b>													
HIGHWAY, STREET, ETC	2174	2738	2804	3812	2161	2048	5195	3337	6540	3953	1311	5709	41782
COMMERCIAL HOUSE	4683	5994	4273	6920	491	1049	3555	778	1785	9635	14176	8957	61896
GAS STATION	200	87	287	395	177	970	222	50	900	399	261	648	4596
CHAIN STORE	-	-	-	-	-	-	-	-	2714	-	-	-	2714
RESIDENCE	725	239	793	236	329	384	630	1503	-	321	111	2623	8245
BANK	-	-	-	-	-	-	-	1600	4094	-	-	1850	7544
MISCELLANEOUS	128	270	41	668	227	236	231	1508	1623	44	-	3534	9065
TOTAL	<u>7910</u>	<u>8928</u>	<u>8198</u>	<u>12031</u>	<u>3385</u>	<u>4687</u>	<u>9833</u>	<u>8776</u>	<u>18007</u>	<u>14352</u>	<u>16394</u>	<u>23341</u>	<u>135842</u>
<b>BURGLARY</b>													
RESIDENCE - DWELLING													
1. NIGHT	53031	27724	75847	50919	35354	39214	34338	36440	39911	49045	45901	72244	559968
2. DAY	18263	13222	1106	320	33799	17728	22827	12382	15669	20201	24269	30792	210578
3. UNKNOWN	4634	4190	215	-	-	-	-	-	-	-	-	-	9039
NON-RESIDENCE - STORE													
1. NIGHT	28781	12595	1498	25459	47480	24099	35410	27354	35073	41327	24234	27035	330345
2. DAY	116	169	-	100	-	360	1457	624	-	512	415	333	3917
3. UNKNOWN	2700	57900	78666	76798	116633	81401	94032	76800	90653	111085	94819	130404	2869
TOTAL	<u>107525</u>	<u>57900</u>	<u>78666</u>	<u>76798</u>	<u>116633</u>	<u>81401</u>	<u>94032</u>	<u>76800</u>	<u>90653</u>	<u>111085</u>	<u>94819</u>	<u>130404</u>	<u>1116716</u>
<b>LARCENY - VALUE</b>													
OVER \$50	53891	50670	70203	74936	91832	68451	75080	112128	89922	103722	93999	108148	992982
\$5 TO \$50	9030	8991	9197	15370	15147	15494	17164	23407	14061	17168	13582	12243	170854
UNDER \$5	247	200	739	398	526	640	241	1212	376	2254	662	874	8369
TOTAL	<u>63168</u>	<u>59861</u>	<u>80139</u>	<u>90704</u>	<u>107505</u>	<u>84585</u>	<u>92485</u>	<u>136747</u>	<u>104359</u>	<u>123144</u>	<u>108243</u>	<u>121265</u>	<u>1172205</u>
<b>LARCENY - NATURE</b>													
POCKET PICKING	255	568	2913	639	464	532	839	782	794	456	3381	758	12381
PURSE SNATCHING	287	688	670	657	996	492	216	707	572	944	1949	1410	9588
SHOPLIFTING	1440	1481	2789	4780	1651	1911	1980	5299	1543	3772	3377	2086	32109
THEFTS FROM AUTOS	12561	10543	16459	16595	20339	10455	17814	25595	29629	32893	25687	43056	261626
THEFTS - ACCESSORIES - BICYCLES	14420	16859	20953	25169	30624	22234	18918	28765	20104	23299	25422	20996	267763
FROM BICYCLES	618	633	1192	9571	9571	8899	12423	13478	7895	7907	2685	595	71877
FROM BUILDINGS	22105	21637	22081	15676	17506	21615	15162	29937	18887	20988	35948	30842	272385
FROM COIN-OPR. MACH.	81	395	502	17	76	66	184	223	396	317	81	263	2600
ALL OTHERS	11401	7057	12580	21190	26278	18381	24949	31961	24539	32568	9713	21259	241876
TOTAL	<u>63168</u>	<u>59861</u>	<u>80139</u>	<u>90704</u>	<u>107505</u>	<u>84585</u>	<u>92485</u>	<u>136747</u>	<u>104359</u>	<u>123144</u>	<u>108243</u>	<u>121265</u>	<u>1172205</u>
<b>AUTO THEFTS</b>	110359	96428	145064	147408	116538	167381	139567	123470	150219	140658	117210	118472	1572774

VALUE OF PROPERTY STOLEN AND RECOVERED

1971

	JAN.	FEB.	MARCH	APRIL	MAY	JUNE	JULY	AUG.	SEPT.	OCT.	NOV.	DEC.	TOTAL
CURRENCY STOLEN	26304	30014	31306	28709	30705	33514	27071	34437	33682	57892	42858	46563	423055
CURRENCY RECOVERED	1251	2906	5135	1285	1119	7697	597	2051	302	5955	458	558	29314
JEWELRY STOLEN	16606	10027	11359	11612	10861	8954	13501	16034	17283	14289	20868	29064	180458
JEWELRY RECOVERED	1642	832	2962	855	1032	636	1713	1895	1276	95	33	159	13130
FURS STOLEN	2380	-	1270	675	-	-	-	-	4500	3099	574	5900	18398
FURS RECOVERED	500	-	-	-	-	-	-	-	-	-	-	-	500
CLOTHING STOLEN	8817	9770	8305	15088	41392	6366	8427	8176	11940	12064	19711	32300	182356
CLOTHING RECOVERED	996	726	1855	3768	2651	1120	1150	2793	685	1846	1765	1709	21064
AUTOS STOLEN	110359	96428	145064	147408	116538	167381	139567	123470	150219	140658	117210	118472	1572774
AUTOS RECOVERED	90259	64568	141971	138210	104343	156979	113639	96075	118694	126731	93655	107770	1352894
MISC. STOLEN	124496	76878	114763	123449	144565	121839	147351	163676	145614	161237	135445	161183	1620496
MISC. RECOVERED	12755	12571	4672	6325	10638	6764	6539	8793	5414	9019	5554	6458	95502
TOTAL STOLEN	288962	223117	312067	326941	344061	338054	335917	345793	363238	389239	336666	393482	3997537
TOTAL RECOVERED	107403	81603	156595	150443	119783	173196	123638	111607	126371	143646	101465	116654	1512404

## VALUE OF PROPERTY STOLEN, BY TYPE OF CRIME - 1971 - 1970

## PERCENTAGE COMPARISON BY SUB-TYPE CRIME

	PERCENT <u>TOTAL</u>		NUMBER <u>OFFENSES</u>		<u>VALUATION</u>	
	<u>1971</u>	<u>1970</u>	<u>1971</u>	<u>1970</u>	<u>1971</u>	<u>1970</u>
<u>ROBBERY</u>						
Highway, Street, etc.	61.4	60.1	672	525	41782.	95352.
Commercial Houses	17.6	17.5	193	153	61896.	52361.
Gas Station	5.7	8.8	63	77	4596.	6644.
Chain Store	.7	.6	7	5	2714.	3868.
Residence	8.1	8.1	89	71	8245.	12068.
Bank	.4	.5	4	4	7544.	28329.
Miscellaneous	<u>6.1</u>	<u>4.4</u>	<u>65</u>	<u>38</u>	<u>9065.</u>	<u>3451.</u>
TOTAL	<u>100.0</u>	<u>100.0</u>	<u>1093</u>	<u>873</u>	<u>135842.</u>	<u>202073.</u>
<u>BURGLARY</u>						
(A) Residence (Dwelling)						
(1) Night	40.4	32.7	2138	1672	559968.	354457.
(2) Day	20.9	23.2	1111	1184	210578.	287522.
(3) Unknown	1.5	4.2	77	218	9039.	49940.
(B) Non-Residence (Store, Office, etc.)						
(1) Night	33.7	35.4	1784	1811	330345.	405593.
(2) Day	2.8	1.8	147	93	3917.	7861.
(3) Unknown	<u>.7</u>	<u>2.7</u>	<u>40</u>	<u>138</u>	<u>2869.</u>	<u>18687.</u>
TOTAL	<u>100.0</u>	<u>100.0</u>	<u>5297</u>	<u>5116</u>	<u>1116716.</u>	<u>1124060.</u>
<u>LARCENY - VALUE</u>						
Over \$50.00	38.9	33.2	5153	4337	992982.	837667.
\$5.00 to \$50.00	48.9	53.1	6459	6926	170854.	254445.
Under \$5.00	<u>12.2</u>	<u>13.7</u>	<u>1612</u>	<u>1784</u>	<u>8369.</u>	<u>3552.</u>
TOTAL	<u>100.0</u>	<u>100.0</u>	<u>13224</u>	<u>13047</u>	<u>1172205.</u>	<u>1095664.</u>
<u>LARCENY - NATURE</u>						
(A) Pocket Picking	.8	.7	107	93	12381.	8718.
(B) Purse Snatching	1.6	1.1	208	145	9588.	5538.
(C) Shoplifting	12.9	13.5	1707	1762	32109.	26716.
(D) Thefts from Autos (Except E.)	14.3	13.3	1886	1744	261626.	314361.
(E) Thefts-Accessories	25.2	25.4	3328	3307	267763.	260596.
(F) Bicycles	12.7	13.8	1689	1794	71877.	62334.
(G) From Bldgs., (Except C)	17.4	19.6	2299	2560	272385.	293001.
(H) From any Coin-Opr. Machines (Except G)	.6	1.0	86	131	2600.	1914.
(I) All Other	<u>14.5</u>	<u>11.6</u>	<u>1914</u>	<u>1511</u>	<u>241876.</u>	<u>122486.</u>
TOTAL	<u>100.0</u>	<u>100.0</u>	<u>13224</u>	<u>13047</u>	<u>1172205.</u>	<u>1095664.</u>
AUTO THEFTS	100.0	100.0	1699	1531	1572774.	1261098.



PROPERTY ROOM

Estimated Merchandise Received . . . . .	\$ 2,766,229.00
Estimated Merchandise Returned . . . . .	<u>2,250,633.00</u>
Estimated Merchandise Pending . . . . .	<u>\$ 515,596.00</u>

Money received from Auction Sales and Confiscated  
money.

Sale of Scrap. . . . .	\$ 3.00
Confiscated Money. . . . .	442.00
Auction Sales. . . . .	<u>5,266.25</u>
	<u>\$ 5,711.25</u>

KNOWN OFFENSE TOTALS, PERCENTAGE CLEARED BY ARREST  
RATE PER 100,000 POPULATION

	<u>1971</u>	<u>1970</u>	<u>1969</u>	<u>1968</u>	<u>1967</u>
<b>MURDER</b>					
Known Offenses	29	29	19	22	34
Pct. Cleared by Arrest	75.9	89.7	94.7	72.7	76.5
Rate Per 100M	7.5	7.5	4.9	5.7	8.6
<b>NEGLIGENT MANSLAUGHTER</b>					
Known Offenses	13	15	17	16	27
Pct. Cleared by Arrest	100.0	86.7	94.1	106.3	96.3
Rate Per 100M	3.4	3.9	4.4	4.1	6.8
<b>FORCIBLE RAPE</b>					
Known Offenses	139	91	75	86	77
Pct. Cleared by Arrest	51.1	68.1	64.0	77.9	67.5
Rate Per 100M	36.2	23.7	19.6	22.5	19.5
<b>ROBBERY</b>					
Known Offenses	1093	873	819	1027	1063
Pct. Cleared by Arrest	33.1	33.6	26.0	28.1	37.6
Rate Per 100M	284.7	227.4	214.3	269.9	269.2
<b>AGGRAVATED ASSAULT</b>					
Known Offenses	487	353	422	419	401
Pct. Cleared by Arrest	75.8	89.8	81.3	84.5	88.3
Rate Per 100M	126.9	91.9	110.4	109.9	101.5
<b>BURGLARY</b>					
Known Offenses	5297	5116	3743	3631	4137
Pct. Cleared by Arrest	24.7	29.9	25.1	30.4	25.7
Rate Per 100M	1379.9	1332.7	979.5	952.7	1047.7
<b>LARCENY - \$50.00 &amp; OVER</b>					
Known Offenses	5153	4337	3633	2763	2746
Pct. Cleared by Arrest	11.9	12.3	13.3	14.0	13.5
Rate Per 100M	1342.4	1129.7	950.7	725.0	695.4
<b>LARCENY UNDER \$50.00</b>					
Known Offenses	8071	8710	7889	8369	7888
Pct. Cleared by Arrest	28.2	26.4	24.7	25.0	22.4
Rate Per 100M	2102.5	2268.9	2064.5	2196.0	1997.7
<b>AUTO THEFT</b>					
Known Offenses	1699	1531	1467	1424	1882
Pct. Cleared by Arrest	31.4	33.4	36.2	35.0	33.4
Rate Per 100M	442.6	398.8	383.9	373.6	476.6
<b>TOTAL</b>					
Known Offenses	21981	21055	18084	17757	18255
Pct. Cleared by Arrest	25.3	26.5	25.1	27.2	25.7
Rate Per 100M	5726.1	5484.8	4732.5	4659.4	4623.4
<b>TOTAL</b>					
Serious Offenses	13897	12330	10178	9372	10340
Pct. Cleared by Arrest	12.7	21.1	8.6	9.3	28.0
Rate Per 100M	3620.2	3211.9	2663.5	2459.2	2618.8

Serious Offenses is a term used to measure crime. It includes seven offenses; Murder and Non-Negligent Manslaughter, Forcible Rape, Robbery, Aggravated Assault, Burglary-Breaking and Entering, Larceny \$50.00 and Over and Auto Theft.

The population estimate used as a basis for the crime rate follows:  
 1971 estimated population-383,818; 1970 estimated population-383,818;  
 1969 estimated population-382,000; 1968 estimated population-381,000;  
 1967 estimated population-378,000.

DEPARTMENTAL - JUVENILE ARRESTS (CITED & ADJUSTED)

	JUV. BOYS CITED COURT	JUV. GIRLS CITED COURT	JUV. BOYS CASES ADJ.	JUV. GIRLS CASES ADJ.	TOTAL CITED COURT	TOTAL CASES ADJ.	GRAND TOTAL
<b>CLASS 1 OFFENSES</b>							
1. CRIMINAL HOMICIDE							
(a) MURDER-NONNEG. MNSLGHTR.	1	-	-	-	1	-	1
(b) MNSLGHTR. BY NEGLIGENCE	1	1	-	-	2	-	2
2. RAPE	7	-	1	-	7	1	8
3. ROBBERY	39	2	9	-	41	9	50
4. AGGRAVATED ASSAULT	22	3	3	2	25	5	30
5. BURGLARY, BREAKING, ETC.	171	3	42	5	174	47	221
6. LARCENY - THEFT							
(a) \$50 & OVER	84	10	47	7	94	54	148
(b) UNDER \$50	461	334	156	43	795	199	994
7. AUTO THEFT	134	1	12	1	135	13	148
TOTAL CLASS 1 OFFENSES	920	354	270	58	1274	328	1602
<b>CLASS 2 OFFENSES</b>							
8. OTHER ASSAULTS	145	34	236	87	179	323	502
9. FORGERY & COUNTERFEITING	9	2	2	1	11	3	14
10. EMBEZZLEMENT & FRAUD	33	3	6	9	36	15	51
11. STOLEN PROPERTY	43	6	25	1	49	26	75
12. WEAPON OFFENSES	35	4	102	1	39	103	142
13. COMMERCIALIZED VICE	4	21	-	1	25	1	26
14. SEX OFFENSES	43	9	56	11	52	67	119
15. FAMILY OFFENSES	6	2	-	1	8	1	9
16. NARCOTIC DRUG LAWS	176	30	50	14	206	64	270
17. STATE LIQUOR LAWS	19	1	-	-	20	-	20
18. DRUNKENNESS	188	19	26	7	207	33	240
19. DISORDERLY CONDUCT	148	32	562	149	180	711	891
20. VAGRANCY	7	11	-	-	18	-	18
21. GAMBLING	12	-	11	1	12	12	24
22. DRIVING INTOXICATED	29	2	-	-	31	-	31
23. ROAD & DRIVING LAWS	515	77	16	5	592	21	613
24. PARKING VIOLATIONS	-	-	-	-	-	-	-
25. TRAFFIC LAWS	213	16	5	2	229	7	236
26. ALL OTHER OFFENSES	922	460	885	307	1382	1192	2574
TOTAL CLASS 2 OFFENSES	2547	729	1982	597	3276	2579	5855
<b>CLASS 3 OFFENSES</b>							
27. SUSPICION	-	-	-	-	-	-	-
28. FEDERAL OFFENSES	9	-	26	-	9	26	35
29. NON-OFFENSE ARRESTS	113	79	41	23	192	64	256
TOTAL CLASS 3 OFFENSES	122	79	67	23	201	90	291
<b>GRAND TOTAL</b>	<b>3589</b>	<b>1162</b>	<b>2319</b>	<b>678</b>	<b>4751</b>	<b>2997</b>	<b>7748</b>



17	Rape and Prostitution		1	10	2	5	2	20	70	44
	Male	Female								
18	Total	Narcotic Drug Laws	2	6	27	36	59	59	189	
		Opium or Cocaine and Their Derivatives (Morphine, Heroin, Codeine)		4	10	7	4	9	34	204
a	Marijuana	Male				1	2	3		
		Female					2	2		1
b	Synthetic Narcotics - Manufactured Narcotics Which Can Cause True Drug Addiction (Demerol, Methadones)	Male		7	15	26	21	69		
		Female	2	1	3	2	2	10	76	
c	Other - Dangerous Non-Narcotic Drugs (Barbiturates, Benzadrine)	Male		1	3	2	1	7		
		Female		1	1			1	8	
d	Total	Male	2	6	19	29	33	107		
		Female		2	8	4	5	20	116	
19	Total	Male		4	1	4	4	13		
		Female							3	
a	Bookmaking (Horse and Sport Book)	Male								
		Female								
b	Numbers and Lottery	Male				1			1	
		Female								
c	All Other Gambling	Male		4	1	3	4	12		
		Female							2	
20	Offenses Against Family and Children	Male								
		Female	1		1	1		3	2	
21	Driving Under The Influence	Male				1	5	6		
		Female					1	1	7	
22	Liquor Laws	Male		1	2	4	6	13		
		Female							11	
23	Drunkenness	Male	1	13	11	32	41	99		
		Female		2	7	4	3	16	100	
24	Disorderly Conduct	Male	134	125	141	99	82	678		
		Female	32	28	57	18	17	175	568	
25	Vagrancy	Male				1		1		
		Female			1	1	2	4	3	
26	All Other Offenses (Except Traffic)	Male	118	129	310	229	267	211	1264	
		Female	13	35	150	110	90	75	473	1329
27	Suspicion	Male								
		Female								
28	Curfew and Loitering Law Violations	Male		1	16	20	35	26	98	
		Female			11	4	6	1	22	96
29	Run-Aways	Male	6	17	48	27	16	160		
		Female	2	18	96	45	21	244	318	
TOTAL		519	686	1565	1091	1154	1023	6038	4392	1645

(INSTRUCTIONS ON PAGE 4)

AGE, SEX AND RACE OF PERSONS ARRESTED  
Over 18 years of age

(Include those released without having been formally charged)

CLASSIFICATION OF OFFENSES	SEX	AGE											
		18	19	20	21	22	23	24	25-29	30-34	35-39	40-44	45-49
Murder and Nonnegligent Manslaughter	Male		3		2	1		2	4	3		2	
	Female		1							1		1	
Manslaughter by Negligence	Male	1	3		1	1			1	1		1	
	Female		1										
Forcible Rape	Male	4	1	3		1	2	2		1	1	1	
	Female												
Robbery	Male	9	12	13	8	9	11	4	7	7	4	4	2
	Female	1	1				1	1	1				
Aggravated Assault (Return B-4a-d)	Male	3	3	4		1	3	5	14	10	9	6	2
	Female	1			1		1			3	2	1	
Burglary--Breaking or Entering	Male	24	28	15	13	5	12	3	23	10	6	5	3
	Female		1			1							
Larceny--Theft (Except Auto Theft)	Male	66	46	36	34	34	25	19	65	44	35	49	31
	Female	48	39	30	27	33	31	19	70	32	23	22	23
Auto Theft	Male	12	16	12	4	3	2	8	15	5	4	2	1
	Female		1	1			1		1	1			
Other Assaults (Return B-4e)	Male	21	22	25	26	22	29	38	80	71	46	51	25
	Female	3	4	1	5	4	4	3	6	10	2	4	6
Arson	Male	1	1		1	1				1		1	
	Female		1										
Forgery & Counterfeiting	Male	1	6	6	3	2	3	5	9	14	5		6
	Female		1	2	1	1	1	2	5	1			
Fraud	Male	9	11	8	7	8	8	14	52	27	16	18	12
	Female	2	7	5	6	5	3	2	18	15	5	8	2
Embezzlement	Male												
	Female												
Stolen Property; Buying, Receiving, Possessing	Male	10	14	5	10	5	2	5	23	11	6	4	6
	Female	2			3	2	1		1	1			
Vandalism	Male	6	3	1	2	3	1	3	9	9	3	6	1
	Female		1	1	1	1			3	1			
Weapons; Carrying, Possessing, etc.	Male	11	13	12	15	11	16	19	35	29	24	27	13
	Female	1	3		1	2	4		3	8	4	2	1
Prostitution and Commercialized Vice	Male	1	7	4	5	1	2	5	17	8	4	3	3
	Female	12	26	13	14	15	12	12	19	11	1	1	
Sex Offenses (Except Forcible Rape and Prostitution)	Male	8	7	4	2	4	8	8	26	18	11	11	7
	Female				1								
Narcotic Drug Laws	Male	36	46	50	45	23	24	28	80	17	5	5	1
	Female	10	12	11	12	14	9	4	7	2	2	1	1
Opium or Cocaine and Their Derivatives (Mor- phine, Heroin, Codeine)	Male		1	5	7	2	4	5	18	4	2	1	
	Female	1	2	2		3	1	1			1		
Marijuana	Male	24	24	23	21	14	9	16	35	8	1	2	1
	Female	7	3	7	6	4	5	3	3	2	1	1	1
Synthetic Narcotics - Manu- factured Narcotics Which Can Cause True Drug Addic- tion (Demerol, Methadones)	Male	1	2	2	1				2	2	1		
	Female					2	1						
Other - Dangerous Non- Narcotics Drugs (Barbiturates, Benzadrine)	Male	9	14	11	8	4	7	4	14	2	1	1	
	Female	1	5	2	6	3	1		4				
Gambling	Male	6	3	6	5	6	8	2	30	27	18	14	16
	Female			1	1			1	3	3	1	1	2
Bookmaking (Horse and Sport Book)	Male							1	3		1	1	
	Female												
Numbers and Lottery	Male				1	1		1	5	2	3	3	4
	Female								1	1			
All Other Gambling	Male	6	3	6	5	5	8	1	24	22	15	10	11
	Female			1				1	2	2	1	1	2
Offenses Against Family and Children	Male	8	7	9	18	20	16	35	91	79	47	41	23
	Female		1			1	2						
Driving Under The Influence	Male	26	24	30	36	41	38	37	167	145	151	189	154
	Female	2					2		7	10	14	15	15
Liquor Laws	Male	6	6	3	2	1	2	1	5	11	11	5	9
	Female	1		2	1				3	7	2	3	
Drunkenness	Male	112	93	91	80	99	97	117	476	423	500	687	634
	Female	9	9	12	11	7	11	16	52	53	51	75	46
Disorderly Conduct	Male	29	16	19	17	14	12	8	45	20	14	13	11
	Female	4	8	5	6	8	7	3	14	6	8	13	6
Vagrancy	Male	4	3	4	7	6	5	3	9	14	8	15	22
	Female	8	4	2	4	1	1		1			1	
All Other Offenses (Except Traffic)	Male	33	27	23	14	11	25	25	70	58	47	42	27
	Female	4	4	2	6	2	5	6	9	5	9	8	1
Suspicion	Male												
	Female												
TOTAL		555	545	471	458	430	447	465	1576	1230	1102	1358	1112



AGE, SEX AND RACE OF PERSONS ARRESTED  
Over 18 years of age  
(include those released without having been formally charged)

CLASSIFICATION OF OFFENSES	SEX	AGE				TOTAL	RACE					
		50-54	55-59	60-64	65 and over		White	Negro	Indian	Chi-nese	Japo-nese	All Other
Carrying Dangerous Weapon	01					17		14				
Carrying Dangerous Weapon by	01					9						
Forcible Rape	02					16						
	Female						7	9				
Robbery	03					91						
	Female	1				5	35	60				1
Aggravated Assault (Return B-4a-d)	04					61						
	Female	1				10	30	41				
Burglary--Breaking or Entering	05					152						
	Female	2			3	2	65	88	1			
Larceny--Theft Except Auto Theft	06					562						
	Female	23	18	15	22	446	607	394	3	1		3
Auto Theft	07					85						
	Female	1				5	51	37	1			1
Other Assaults (Return B-4e)	08					475						
	Female	10	4	2	3	56	297	231	1			2
Arson	09					6						
	Female					1	4	2	1			
Forgery & Counterfeiting	10					64						
	Female	2	1	1		14	38	39	1			
Fraud	11					212						
	Female	12	5	1	4	82	180	113				1
Embezzlement	12											
	Female											
Stolen Property; Buying, Receiving, Possessing	13					104						
	Female	2	1			10	47	67				
Vandalism	14					51						
	Female	3	1			7	33	24	1			
Weapons; Carrying, Possessing, etc.	15					255						
	Female	9	7	8	6	33	118	170				
Prostitution and Commercialized Vice	16					64						
	Female	1		3		136	83	117				
Sex Offenses (Except Forcible Rape and Prostitution)	17					120						
	Female	3	1	1	1	1	95	24				2
Narcotic Drug Laws	18					364						
	Female	1	3			85	299	148				2
Opium or Cocaine and Their Derivatives (Morphine, Heroin, Codeine)	a					49						
	Female					11	9	51				
Marijuana	b					182						
	Female	1	3			43	180	45				
Synthetic Narcotics - Manufactured Narcotics Which Can Cause True Drug Addiction (Demerol, Methadone)	c					11						
	Female					3	11	3				
Other - Dangerous Non-Narcotic Drugs (Barbiturates, Benzadrine)	d					75						
	Female					22	74	22				1
Gambling	19					199						
	Female	10	15	17	16	13	66	141	2			3
Bookmaking (Horse and Sport Book)	a					17						
	Female	2	2	5	2		16	1				
Numbers and Lottery	b					39						
	Female	3	3	7	7	3	12	30				
All Other Gambling	c					143						
	Female	5	10	5	7	10	38	110	2			3
Offenses Against Family and Children	20					410						
	Female	10	4	2		4	196	217	1			
Driving Under The Influence	21					1309						
	Female	119	70	50	32	88	1087	308				2
Liquor Laws	22					80						
	Female	6	1	2	9	22	58	44				
Drunkenness	23					4661						
	Female	459	330	249	214	454	3876	1213	14	1		11
Disorderly Conduct	24					229						
	Female	6	4	1		96	174	150	1			
Vagrancy	25					155						
	Female	11	14	10	20	22	116	59				2
All Other Offenses Except Traffic	26					447						
	Female	17	11	8	9	65	313	195	3			1
Suspicion	27											
	Female	2	1	1								
<b>TOTAL</b>												
		801	547	399	363	11859	7889	3907	30	2		31



ARRESTS - BY PARTICIPATING UNITS  
1971

CLASS	SCOUT CREWS	PATROL WAGON	FOOT PATROL	DETS.	MORALS SQUAD	CYCLE OFFERS.	SEL. ENFOR-CEMENT	SPEC. POL.	TRAF. ACC.	CRIME PREV.	RANK OFFERS.	TOTAL
<b>CLASS 1 OFFENSES</b>												
1. CRIMINAL HOMICIDE												
A. MURDER-NONNEG. MNSLGHTR.	6	-	3	11	-	-	-	-	-	-	2	19
B. MNSLGHTR. BY NEGLIGENCE	-	-	-	1	-	-	-	-	7	-	-	10
2. RAPE	1	-	-	42	4	-	2	-	1	14	-	16
3. ROBBERY	26	10	2	24	2	-	-	-	1	8	-	95
4. AGGRAVATED ASSAULT	14	15	7	24	2	-	-	-	1	5	2	70
5. BURGLARY, BREAKING, ETC.	52	23	1	49	2	-	3	1	2	17	2	152
6. LARCENY - THEFT												
A. \$50 & OVER	26	21	8	50	9	-	2	21	2	3	-	142
B. UNDER \$50	38	37	52	36	6	-	3	679	2	9	4	966
7. AUTO THEFT	14	12	2	42	2	-	2	7	7	7	1	89
TOTAL CLASS 1 OFFENSES	<u>177</u>	<u>118</u>	<u>75</u>	<u>255</u>	<u>25</u>	-	<u>12</u>	<u>701</u>	<u>22</u>	<u>63</u>	<u>11</u>	<u>1459</u>
<b>CLASS 2 OFFENSES</b>												
8. OTHER ASSAULTS	234	160	63	24	22	1	6	13	10	15	3	551
9. FORGERY & COUNTERFEITING	6	14	4	42	6	-	2	-	1	-	1	76
10. EMBEZZLEMENT & FRAUD	25	23	10	186	11	-	1	29	2	5	1	293
11. STOLEN PROPERTY	21	12	7	46	5	-	2	4	1	15	-	113
12. WEAPON OFFENSES	125	82	6	19	28	-	7	8	4	7	-	286
13. COMMERCIALIZED VICE	3	4	1	6	184	-	-	-	-	-	-	200
14. SEX OFFENSES	15	10	4	6	19	-	1	-	2	64	1	122
15. FAMILY OFFENSES	178	147	47	19	4	-	7	4	2	14	1	423
16. NARCOTIC DRUG LAW	60	48	8	14	313	-	6	10	4	4	1	467
17. STATE LIQUOR LAW	9	9	-	3	28	-	1	51	1	4	-	102
18. DRUNKENNESS	2705	1678	228	26	180	2	105	74	92	4	29	5123
19. DISORDERLY CONDUCT	161	87	18	4	45	-	7	16	6	16	3	363
20. VAGRANCY	64	60	16	2	14	-	8	8	4	2	2	180
21. GAMBLING	20	2	-	6	177	-	2	1	-	5	-	213
22. DRIVING INTOXICATED	772	434	16	5	6	1	30	4	102	26	3	1399
23. ROAD & DRIVING LAWS	558	310	43	54	32	1	13	23	656	21	4	1715
24. PARKING VIOLATIONS	-	-	-	-	-	-	-	-	3	-	-	3
25. TRAFFIC LAWS	332	153	17	15	14	-	50	11	129	12	2	735
26. ALL OTHER OFFENSES	334	251	73	51	24	1	10	44	12	47	9	856
TOTAL CLASS 2 OFFENSES	<u>5622</u>	<u>3484</u>	<u>561</u>	<u>928</u>	<u>1112</u>	<u>6</u>	<u>258</u>	<u>302</u>	<u>1031</u>	<u>257</u>	<u>59</u>	<u>13220</u>
<b>CLASS 3 OFFENSES</b>												
27. SUSPICION												
28. FEDERAL OFFENSES	31	31	3	27	3	-	2	15	7	1	-	120
29. NON OFFENSE ARRESTS	161	145	22	103	30	-	20	22	8	11	7	529
TOTAL CLASS 3 OFFENSES	<u>192</u>	<u>176</u>	<u>25</u>	<u>130</u>	<u>33</u>	-	<u>22</u>	<u>37</u>	<u>15</u>	<u>12</u>	<u>7</u>	<u>649</u>
GRAND TOTAL	5991	3778	661	913	1170	6	292	1040	1068	332	77	15328

ADULT ARRESTS - MUNICIPAL COURT - INSTITUTIONS SENTENCED  
1971

	LUCAS COUNTY JAIL	WORK- HOUSE	CITY JAIL	NO INST.	GRAND JURY	PEND- ING	TOTAL
CLASS 1 OFFENSES							
1. CRIMINAL HOMICIDE							
A. MURDER-NONNEG. M.SLGHTR.	-	-	-	-	16	3	19
B. MNSLGHTR. BY NEGLIGENCE	-	2	-	-	3	5	10
2. RAPE	-	-	-	2	13	1	16
3. ROBBERY	-	-	-	17	70	8	95
4. AGGRAVATED ASSAULT	-	5	-	19	35	11	70
5. BURGLARY, BREAKING, ETC.	1	2	-	15	127	7	152
6. LARCENY - THEFT							
A. \$50 & OVER	3	28	5	62	30	14	142
B. UNDER \$50	12	109	44	641	5	55	866
7. AUTO THEFT	-	20	1	33	27	8	89
TOTAL CLASS 1 OFFENSES	<u>16</u>	<u>166</u>	<u>50</u>	<u>789</u>	<u>326</u>	<u>112</u>	<u>1459</u>
8. OTHER ASSAULTS	-	59	3	433	1	55	551
9. FORGERY & COUNTERFEITING	-	-	1	10	59	6	76
10. EMBEZZLEMENT & FRAUD	5	19	-	208	25	36	293
11. STOLEN PROPERTY	1	21	1	29	51	10	113
12. WEAPON OFFENSES	6	57	1	137	42	43	286
13. COMMERCIALIZED VICE	20	20	50	78	19	13	200
14. SEX OFFENSES	-	25	1	40	43	13	122
15. FAMILY OFFENSES	2	80	-	264	5	72	423
16. NARCOTIC DRUG LAW	2	35	7	249	133	41	467
17. STATE LIQUOR LAW	-	4	-	89	-	9	102
18. DRUNKENNESS	12	1299	47	3576	-	189	5123
19. DISORDERLY CONDUCT	-	17	7	319	-	20	363
20. VAGRANCY	-	75	3	96	-	6	180
21. GAMBLING	-	5	-	197	3	8	213
22. DRIVING INTOXICATED	11	1065	58	143	-	122	1399
23. ROAD & DRIVING LAWS	2	73	4	1561	-	75	1715
24. PARKING VIOLATIONS	-	-	-	3	-	-	3
25. TRAFFIC LAWS	1	206	6	471	6	45	735
26. ALL OTHER OFFENSES	3	38	7	763	16	29	356
TOTAL CLASS 2 OFFENSES	<u>65</u>	<u>3098</u>	<u>196</u>	<u>8666</u>	<u>403</u>	<u>792</u>	<u>13220</u>
CLASS 3 OFFENSES							
27. SUSPICION							
28. FEDERAL OFFENSES	-	-	-	119	-	1	120
29. NON OFFENSE ARRESTS	3	16	-	492	-	18	529
TOTAL CLASS 3 OFFENSES	<u>3</u>	<u>16</u>	<u>-</u>	<u>611</u>	<u>-</u>	<u>19</u>	<u>649</u>
GRAND TOTAL	84	3280	246	10066	729	923	15328



## ARRESTS - MUNICIPAL COURT TERRIENCY - 1971

	FINE DUSP.	DAYS DUSP.	BOTH SUSP.	GRAND JURY	PEND- ING	OTHER	TOTAL
CLASS 1 OFFENSES							
1. CRIMINAL HOMICIDE	-	-	-	16	1	2	19
A. MURDER - INTENED. MNSLGHTR.	-	-	-	3	2	3	10
B. MNSLGHTR. BY NEGLIGENCE	-	2	-	-	-	-	2
2. RAPE	-	-	-	13	1	2	16
3. ROBBERY	-	-	-	70	8	17	95
4. AGGRAVATED ASSAULT	-	-	-	35	11	24	70
5. BURGLARY, BREAKING, ETC.	-	1	-	127	7	17	152
6. LARCENY - THEFT							
A. \$50 & OVER	-	17	1	30	16	78	142
B. UNDER \$50	7	392	5	5	57	400	866
7. AUTO THEFT	-	5	-	27	8	49	89
TOTAL CLASS 1 OFFENSES	<u>7</u>	<u>417</u>	<u>6</u>	<u>326</u>	<u>111</u>	<u>592</u>	<u>1459</u>
CLASS 2 OFFENSES							
8. OTHER ASSAULTS	1	87	-	1	56	406	551
9. FORGERY & COUNTERFEITING	-	2	-	59	6	9	76
10. EMBEZZLEMENT & FRAUD	3	38	-	25	37	190	293
11. STOLEN PROPERTY	-	6	-	51	10	46	113
12. NEARLY OFFENSES	1	24	1	42	43	175	286
13. COMMERCIALIZED VICE	1	19	-	19	14	147	200
14. SEX OFFENSES	-	9	-	43	13	57	122
15. FAMILY OFFENSES	2	69	1	5	73	273	423
16. NARCOTIC DRUG LAW	1	36	-	133	41	256	467
17. STATE LIQUOR LAW	5	5	-	-	9	83	102
18. DRUNKENNESS	83	436	12	-	189	4403	5123
19. DISORDERLY CONDUCT	11	7	-	-	20	325	363
20. VAGRANCY	11	27	-	-	6	136	180
21. GAMBLING	1	8	-	3	8	193	213
22. DRIVING INTOXICATED	6	13	2	-	122	1256	1399
23. ROAD & DRIVING LAWS	9	28	2	-	75	1601	1715
24. PARKING VIOLATIONS	-	-	-	-	-	3	3
25. TRAFFIC LAWS	5	97	1	6	45	581	735
26. ALL OTHER OFFENSES	9	31	1	16	29	770	856
TOTAL CLASS 2 OFFENSES	<u>149</u>	<u>942</u>	<u>20</u>	<u>403</u>	<u>796</u>	<u>10910</u>	<u>13220</u>
CLASS 3 OFFENSES							
27. SUSPICION	-	-	-	-	-	-	-
28. FEDERAL OFFENSES	1	-	-	-	1	118	120
29. NON OFFENSE ARRESTS	-	-	-	-	18	511	529
TOTAL CLASS 3 OFFENSES	<u>1</u>	<u>-</u>	<u>-</u>	<u>-</u>	<u>19</u>	<u>629</u>	<u>649</u>
GRAND TOTAL	157	1359	26	729	926	12131	15328

ARRESTS - MUNICIPAL COURT DISPOSITIONS - 1971

	GUILTY AS CHG.	RE-LEAS-ED	DIS-CHG. ED	CONT. TO CALL	GRAND JURY	NO AFF. FILED	OFF DOCK-ET	DEL O. A.	ADULT STATE TO HOSP.	ADULT TO J. C.	DE CEAS-ED	PEND-ING	TOTAL
<b>CLASS 1 OFFENSES</b>													
1. CRIMINAL HOMICIDE													
A. MURDER-NONNEG. MNSLGHTR.													
B. MNSLGHTR. BY NEGLIGENCE													
2. RAPE	4	-	-	1	16	1	-	-	-	-	-	1	19
3. ROBBERY	1	-	-	1	3	-	-	-	-	-	-	2	10
4. AGGRAVATED ASSAULT	-	1	2	2	13	2	9	1	-	-	-	1	16
5. BURGLARY, BREAKING, ETC.	10	1	3	4	70	1	6	-	-	-	-	8	95
6. LARCENY - THEFT	3	1	1	2	35	1	7	-	-	-	-	10	70
A. \$50 & OVER	66	-	6	11	127	4	7	-	-	-	-	7	152
B. UNDER \$50	701	1	14	62	30	1	15	-	-	-	-	13	142
7. AUTO THEFT	34	-	4	7	27	1	8	-	-	-	-	54	866
TOTAL CLASS 1 OFFENSES	<u>819</u>	<u>4</u>	<u>31</u>	<u>89</u>	<u>326</u>	<u>14</u>	<u>71</u>	<u>1</u>	<u>1</u>	<u>1</u>	<u>1</u>	<u>89</u>	<u>1459</u>
<b>CLASS 2 OFFENSES</b>													
8. OTHER ASSAULTS													
9. FORGERY & COUNTERFEITING													
10. EMBEZZLEMENT & FRAUD													
11. STOLEN PROPERTY													
12. WEAPON OFFENSES													
13. COMMERCIALIZED VICE													
14. SEX OFFENSES													
15. FAMILY OFFENSES													
16. NARCOTIC DRUG LAW													
17. STATE LIQUOR LAW													
18. DRUNKENNESS													
19. DISORDERLY CONDUCT													
20. VAGRANCY													
21. GAMBLING													
22. DRIVING INTOXICATED													
23. R & D DRIVING LAWS													
24. PARKING VIOLATIONS													
25. TRAFFIC LAWS													
26. ALL OTHER OFFENSES													
TOTAL CLASS 2 OFFENSES	<u>10211</u>	<u>11</u>	<u>121</u>	<u>843</u>	<u>403</u>	<u>27</u>	<u>535</u>	<u>95</u>	<u>3</u>	<u>220</u>	<u>1</u>	<u>28</u>	<u>13220</u>
<b>CLASS 3 OFFENSES</b>													
27. SUSPICION													
28. FEDERAL OFFENSES													
29. NON OFFENSE ARRESTS													
TOTAL CLASS 3 OFFENSES	<u>2</u>	<u>78</u>	<u>1</u>	<u>5</u>	<u>113</u>	<u>2</u>	<u>2</u>	<u>114</u>	<u>113</u>	<u>2</u>	<u>1</u>	<u>14</u>	<u>120</u>
GRAND TOTAL	11056	94	153	937	729	43	689	499	1161	222	-	870	15328

## CLASS #1 OFFENSES BY CENSUS TRACT FOR 1971

<u>TRACT</u>	<u>OFFENSES</u>	<u>RANK</u>	<u>TRACT</u>	<u>OFFENSES</u>	<u>RANK</u>
28.0	1,233	1	52.0	167	54
25.0	698	2	73.0	166	55
27.0	613	3	18.0	161	56
22.0	601	4	47.2	161	57
57.0	568	5	31.0	157	58
21.0	545	6	3.0	154	59
77.0	527	7	19.0	149	60
16.0	506	8	38.0	147	61
23.0	489	9	83.0	144	62
26.0	447	10	UNKNOWN	142	63
24.0	441	11	74.0	135	64
33.0	438	12	85.0	129	65
15.0	436	13	9.0	123	66
32.0	436	14	67.0	117	67
10.0	433	15	44.0	115	68
34.0	424	16	53.0	115	69
36.0	414	17	45.1	113	70
66.0	401	18	5.0	107	71
78.0	375	19	45.2	107	72
47.1	368	20	75.0	106	73
72.0	368	21	64.0	93	74
14.0	365	22	56.0	91	75
13.0	364	23	69.0	89	76
11.0	351	24	61.0	73	77
48.0	321	25	60.0	70	78
55.0	301	26	43.2	68	79
17.0	293	27	50.0	51	80
58.0	293	28	63.0	48	81
59.0	288	29	71.0	25	82
37.0	287	30	43.1	19	83
35.0	283	31	80.0	14	84
65.0	276	32	76.0	11	85
62.0	266	33	88.0	11	86
30.0	251	34	47.0	4	87
29.0	243	35	81.0	4	88
8.0	240	36	82.0	4	89
68.0	236	37	84.0	3	90
54.0	228	38	91.0	3	91
7.0	222	39	87.0	2	92
42.0	219	40	97.0	2	93
39.0	214	41	101.0	2	94
86.0	212	42	13.1	1	95
40.0	209	43	14.1	1	96
79.0	201	44	27.1	1	97
12.0	192	45	45.0	1	98
6.0	189	46	49.2	1	99
41.0	185	47	70.0	1	100
20.0	182	48	77.1	1	101
46.0	181	49	89.0	1	102
4.0	172	50	92.0	1	103
2.0	169	51	93.0	1	104
49.0	168	52	95.0	1	105
51.0	167	53	98.0	1	106
			99.0	1	107
			TOTAL	21,944	

## CLASS #1 &amp; CLASS #2 OFFENSES FOR 1971 BY CENSUS TRACT

<u>TRACT</u>	<u>OFFENSES</u>	<u>RANK</u>	<u>TRACT</u>	<u>OFFENSES</u>	<u>RANK</u>
28.0	5,894	1	47.2	451	56
UNKNOWN	2,803	2	6.0	444	57
25.0	1,703	3	49.0	430	58
22.0	1,485	4	73.0	404	59
27.0	1,465	5	74.0	403	60
16.0	1,346	6	9.0	393	61
23.0	1,295	7	2.0	392	62
29.0	1,289	8	5.0	363	63
34.0	1,264	9	3.0	355	64
57.0	1,240	10	31.0	352	65
21.0	1,238	11	53.0	344	66
32.0	1,132	12	83.0	313	67
33.0	1,131	13	44.0	300	68
26.0	1,129	14	85.0	295	69
48.0	1,116	15	45.1	293	70
15.0	1,104	16	67.0	274	71
36.0	1,081	17	64.0	265	72
24.0	1,042	18	75.0	257	73
47.1	1,000	19	45.2	238	74
13.0	949	20	56.0	236	75
17.0	906	21	61.0	233	76
66.0	903	22	60.0	210	77
30.0	894	23	69.0	189	78
77.0	868	24	43.2	167	79
14.0	858	25	50.0	155	80
10.0	842	26	63.0	137	81
55.0	828	27	43.1	74	82
11.0	824	28	71.0	44	83
58.0	797	29	80.0	36	84
59.0	776	30	76.0	24	85
37.0	737	31	88.0	24	86
54.0	732	32	84.0	19	87
72.0	729	33	87.0	15	88
78.0	703	34	47.0	13	89
39.0	682	35	82.0	13	90
20.0	676	36	70.0	9	91
12.0	666	37	101.0	9	92
35.0	641	38	81.0	6	93
41.0	617	39	45.0	5	94
42.0	599	40	14.1	5	95
8.0	593	41	91.0	5	96
40.0	585	42	92.0	5	97
18.0	583	43	97.0	5	98
19.0	583	44	29.0	5	100
51.0	544	45	1.0	4	101
79.0	536	46	93.0	4	102
52.0	524	47	41.1	3	103
46.0	522	48	43.0	3	104
38.0	510	49	100.0	3	105
7.0	508	50	1.1	2	106
62.0	506	51	2.1	2	107
86.0	501	52	13.1	2	108
68.0	485	53	95.0	2	109
4.0	478	54	98.0	2	110
65.0	475	55	00.0	2	111



CON'T. CLASS #1 & CLASS #2 OFFENSES FOR 1971 BY CENSUS TRACT

<u>TRACT</u>	<u>OFFENSES</u>	<u>RANK</u>
55.0	2	112
123.1	2	113
2.1	1	114
3.7	1	115
5.8	1	116
3.0	1	117
18.1	1	118
20.2	1	119
21.1	1	120
27.1	1	121
28.1	1	122
29.1	1	123
21.0	1	124
30.4	1	125
42.1	1	126
49.2	1	127
54.1	1	128
54.4	1	129
57.1	1	130
60.1	1	131
61.0	1	132
77.1	1	133
89.0	1	134
90.0	1	135
TOTAL	62,181	

JUVENILE ARRESTS BY CENSUS TRACT  
CLASS #1 and CLASS #2

<u>TRACT</u>	<u>OFFENSES</u>	<u>RANK</u>	<u>TRACT</u>	<u>OFFENSES</u>	<u>RANK</u>
28.0	433	1	73.0	66	50
10.0	182	2	9.0	64	51
22.0	173	3	38.0	64	52
15.0	165	4	6.0	63	53
57.0	154	5	51.0	61	54
16.0	149	6	74.0	59	55
59.0	149	7	52.0	57	56
25.0	142	8	68.0	56	57
58.0	140	9	53.0	54	58
11.0	137	10	4.0	52	59
47.1	136	11	85.0	50	60
77.0	130	12	35.0	49	61
54.0	129	13	37.0	49	62
55.0	129	14	61.0	46	63
48.0	126	15	31.0	38	64
17.0	125	16	44.0	38	65
29.0	125	17	45.1	38	66
66.0	117	18	5.0	37	67
21.0	112	19	49.0	37	68
36.0	109	20	3.0	32	69
30.0	108	21	56.0	32	70
12.0	106	22	60.0	32	71
26.0	105	23	83.0	30	72
20.0	104	24	2.0	27	73
39.0	102	25	75.0	26	74
13.0	98	26	67.0	24	75
42.0	98	27	63.0	20	76
23.0	96	28	45.2	18	77
34.0	94	29	64.0	15	78
46.0	94	30	69.0	15	79
19.0	93	31	50.0	13	80
24.0	93	32	43.2	11	81
UNKNOWN	93	33	43.1	9	82
33.0	93	34	47.0	4	83
41.0	90	35	71.0	4	84
7.0	88	36	80.0	4	85
40.0	88	37	14.1	3	86
8.0	87	38	45.0	3	87
27.0	87	39	82.0	3	88
78.0	84	40	93.0	3	89
62.0	83	41	41.1	2	90
72.0	79	42	70.0	2	91
14.0	75	43	88.0	2	92
65.0	75	44	1.0	1	93
86.0	74	45	21.1	1	96
18.0	73	46	76.0	1	97
32.0	72	47	81.0	1	98
79.0	70	48	92.0	1	99
47.2	67	49	97.0	1	100
			100.0	1	101
			101.0	1	102
			TOTAL	6,951	

BUREAU OF IDENTIFICATION & RECORDS

	1970	1971
<u>AUTO TOWS &amp; RELEASES</u>	11,506	9,853
<u>CASE RECORDS PROCESSED</u>		
Records received from FBI	880	1,009
Indictments posted	1,092	893
Dispositions posted	9,029	9,329
Record requests from County Prosecutor	1,064	1,155
Requests from other authorities	741	677
Records sent to County Prosecutor	759	919
Character letters	103	107
Taxi applicants checked	235	197
<u>COMMUNICATIONS</u>		
TWX - in and out	35,633	42,913
Long distance phone calls	143	540
<u>COMPLAINTS PROCESSED</u>	70,273	65,998
<u>FINGERPRINTS</u>		
Total on file as of December 31st.	432,882	434,946
Sent to other agencies	4,566	5,095
Received from other agencies	235	271
Extra prints & photos mailed	1,514	1,682
Employee applicants fingerprinted	1,089	570
Unknown dead identified by prints	5	2
<u>IDENTIFICATION PROCESSING</u>		
3 x 5 criminal index since 1905	545,957	561,428
Criminal files since 1905	178,228	179,769
New subjects	1,488	1,541
Re-arrests	1,436	1,494
Recidivist checked thru files	15,779	15,443
Names file checked police clearance	28,311	30,579
Wanted elsewhere - arrested locally	80	76
<u>PHOTOGRAPHS</u>		
Contact prints (4 x 5)	26,125	20,771
Dead and murdered photographed	31	29
Enlargements (8 x 10)	814	694
Photos added to M.O. file	135	165

BUREAU OF IDENTIFICATION & RECORDS



CRIME DETECTION LABORATORY

	<u>1970</u>	<u>1971</u>
Firearms examined - - - - -	431	412
Bomb reports (false) reported - - - - -	164	76
Explosives - Grenades - - - - -	55	31
Blood Alcohol Determinations - - - - -	377	323
Carbon Monoxide & Poison - - - - -	31	36
Chemical Restoration of Serial Numbers - - - - -	10	2
Articles marked to be planted - - - - -	16	11
Narcotic and Drug Analysis - - - - -	482	486
Liquor Analysis - - - - -	11	4
Cast of Tool Marks - - - - -	21	16
Cast of Foot Prints - - - - -	15	17
Crime Scenes Visited - - - - -	25	27
Tools & Shoes Received for Examination - - - - -	23	8
Documents Examined - - - - -	70	47
Stain Analysis - - - - -	32	32
Dermal Nitrates - - - - -	29	33
Miscellaneous Examinations - - - - -	27	31
Photographs Taken - - - - -	58	44
Polygraph Examinations - - - - -	339	228
Breathalyzer Tests - - - - -	-1,770	1,573
Court Appearances - - - - -	93	118

HOMICIDE SQUAD INVESTIGATIONS - 1971

	<u>1971</u>	<u>1970</u>	<u>1969</u>	<u>1968</u>	<u>1967</u>	<u>1966</u>	<u>1965</u>	<u>1964</u>
Murder - Non-Negligent Manslaughter	28	29	20	21	35	26	20	10
Percentage Cleared by Arrest	71.4	89.6	95.0	66.7	73.4	92.3	100%	90.0

SUICIDES

	<u>1971</u>	<u>1970</u>	<u>1969</u>	<u>ATTEMPTS</u>	<u>1971</u>	<u>1970</u>	<u>1969</u>
Asphyxiation	1	0	4		9	7	5
Burning	0	1	1		0	0	0
Carbon Monoxide	10	10	13		4	6	4
Cut wrist - throat	0	0	0		32	30	24
Drowning	2	1	5		1	0	1
Gunshot	20	12	25		10	5	5
Hanging	14	12	9		6	2	4
Jumping Off Buildings, etc.	1	1	1		1	2	2
Pills and Medication	12	9	7		563	574	541
Poisons	0	0	0		6	8	4
Train or Motor Vehicle	0	0	0		2	0	1
TOTALS	<u>60</u>	<u>46</u>	<u>65</u>		<u>634</u>	<u>634</u>	<u>591</u>

INVESTIGATIONS

	<u>1971</u>	<u>1970</u>	<u>1969</u>	<u>ARRESTS</u>	<u>1971</u>	<u>1970</u>	<u>1969</u>
Injury and Illness	430	528	748		139	130	383
Assault & Battery - Threats	2962	3244	3141		883	1177	1169
Aggravated Assaults	412	366	441		92	97	131
Homicides	30	32	23		20	26	19
Suicides	60	46	65		0	0	0
Attempt Suicides	634	634	591		9	10	35
Coroner's Cases	479	454	298		0	0	0
Concealed Weapons	104	110	85		104	110	88
Confiscated Weapons	411	382	404		188	194	222
Miscellaneous Cases	581	725	950		407	557	733
TOTALS	<u>6103</u>	<u>6521</u>	<u>6746</u>		<u>1842</u>	<u>2301</u>	<u>2780</u>

## INACTIVE CASES

7.1% 7.5% 6.8%

MORALS SQUAD ACTIVITIES

<u>ARRESTS</u>	<u>1970</u>	<u>1971</u>
Keeping a Gambling Room . . . . .	17	14
Gambling . . . . .	5	0
Loitering in a Gambling Room . . . . .	103	40
Engaging in a Game of Chance . . . . .	105	141
Promoting a Game of Chance . . . . .	-	15
Recording Wagers . . . . .	-	13
Illegal Possession of Number Slips . . . . .	120	13
Impersonating a Member of the Opposite Sex . . . . .	-	9
Indecent Exposure . . . . .	-	1
Prostitution Arrests . . . . .	114	137
Using a Room for Immoral Purposes . . . . .	8	38
Using a Vehicle for Immoral Purposes . . . . .	10	7
Using a Dwelling for Immoral Purposes . . . . .	-	1
Soliciting for Immoral Purposes . . . . .	-	3
Procuring . . . . .	-	9
Molesting a Male . . . . .	-	11
Health Holders . . . . .	(101)	(130)
Narcotic Arrests . . . . .	243	372
Liquor Arrests . . . . .	34	59
Miscellaneous Arrests	<u>386</u>	<u>386</u>
TOTAL ARRESTS	<u>1,145</u>	<u>1,269</u>
Liquor Law Investigations . . . . .	150	140
Court and Grand Jury Appearances . . . . .	1,393	1,028
Speeches . . . . .	85	83



CRIME PREVENTION BUREAU

	<u>1971</u>	<u>1970</u>	<u>1969</u>	<u>1968</u>	<u>1967</u>
<u>COMPLAINTS RECEIVED</u>	8,870	9,233	8,977	9,147	7,166
<u>DISPOSITIONS</u>					
Cleared by Arrest	1,474	1,576	1,692	1,570	1,511
Exceptionally Cleared	1,558	3,800	3,700	3,983	3,359
Inactive	2,560	2,616	2,501	2,576	1,424
Unfounded	121	107	145	158	160
Special Investigations	<u>1,121</u>	<u>1,134</u>	<u>939</u>	<u>860</u>	<u>712</u>
TOTAL DISPOSITIONS	<u>6,834</u>	<u>9,233</u>	<u>8,977</u>	<u>9,147</u>	<u>7,166</u>
<u>ARRESTED BY CPB MEMBERS</u>					
Juveniles Cited to Court	2,175	2,216	2,569	2,558	2,723
Juvenile Cases Adjusted, Detained, Warned and Released	<u>3,736</u>	<u>4,331</u>	<u>3,985</u>	<u>3,764</u>	<u>3,437</u>
TOTAL JUVENILE ARRESTS	5,911	6,547	6,554	6,322	6,160
ADULT ARRESTS	<u>403</u>	<u>432</u>	<u>437</u>	<u>340</u>	<u>255</u>
TOTAL ARRESTS	<u>6,314</u>	<u>6,979</u>	<u>6,991</u>	<u>6,662</u>	<u>6,415</u>
<u>DETENTION OF ADULT FEMALES IN CITY JAIL</u>					
	2,063	2,108	2,069	1,937	1,613

MISSING PERSONS

	<u>1971</u>	<u>1970</u>	<u>1969</u>	<u>1968</u>	<u>1967</u>
Local Persons Reported Missing	2,438	2,324	2,295	2,146	1,806
Local Persons Returned/Located	2,448	2,372	2,275	2,243	1,699
Missing on December 31	<u>71</u>	<u>81</u>	<u>129</u>	<u>99</u>	<u>250</u>
Out of City Persons Reported Missing	235	324	265	242	273
Out of City Persons Returned/Located	<u>235</u>	<u>324</u>	<u>319</u>	<u>287</u>	<u>235</u>
Missing Out of City on December 31	0	0	26	79	104
Local Cases Cleared (Including cases from previous years)					
Juvenile - Male	937	921	841	854	639
Juvenile - Female	1,104	1,031	955	850	574
Adult - Male	265	290	327	314	354
Adult - Female	<u>142</u>	<u>130</u>	<u>152</u>	<u>225</u>	<u>132</u>
TOTAL	<u>2,448</u>	<u>2,372</u>	<u>2,275</u>	<u>2,243</u>	<u>1,699</u>
Out of City Persons Reported Missing	235	324	265	242	273
Out of City Cases Cleared (Including cases from previous years)					
Juvenile - Male	131	150	159	144	153
Juvenile - Female	94	158	117	121	66
Adult - Male	7	11	26	13	9
Adult - Female	<u>3</u>	<u>5</u>	<u>17</u>	<u>9</u>	<u>7</u>
TOTAL	<u>235</u>	<u>324</u>	<u>319</u>	<u>287</u>	<u>235</u>
Communications Concerning Missing Persons					
Received from Other Agencies	518	470	504	431	416
Sent to Other Agencies	1,025	869	710	510	334

TRAFFIC BUREAUSTATISTICAL RECAP OF ACTIVITIES  
1971 - 1970

<u>PARKING TICKETS</u>	<u>1971</u>	<u>1970</u>	+ Increase - Decrease
Issued	\$ 101,881.00	\$ 99,350.00	+ .025%
Voided	7,848.00	10,666.00	- .26%
Paid	66,282.00	64,932.00	+ .02%
Uncollected	35,599.00	34,418.00	- .01%
Fines Collected	\$ 353,149.50	\$ 345,475.50	+ .02%

MOVING VIOLATIONS

Issued	66,407	55,072	+ .21%
Speeding	32,296	20,271	+ .59%
Fines Collected	\$ 1,108,973.36	\$ 1,009,375.36	+ .10%

Without the increase in speeding arrests, total enforcement would have been down by 1,291 arrests.

The Traffic Bureau personnel account for approximately 80% of the traffic enforcement activity.

ACCIDENTS

Total Accidents	20,084	22,523	- .11%
Fatalities	60	66	- .09%
Persons injured	3,875	4,657	- .17%

The above decreases can be attributed to, in part, to the increase in speeding violation arrests.

A total involvement of the uniform patrol in traffic activities can bring about a reduction in accident statistics. It is of little consequence to the injured party whether he was hit on the head by a street thug or run over by an illegal driver.



1. TYPE OF ACCIDENT	Number of Accidents							Number of Persons				
	All Accidents	Fatal	Non-Fatal				Property Damage	Total Killed	Injured			
			Total	a	b	c			Total	a	b	c
Motor Vehicle												
1. Ran off road	1494	14	324	175	34	65	1156	18	466	230	122	114
2. Overturned on road	46	2	11	2	5	4	33	2	15	2	8	5
3. Pedestrian	565	14	551	155	163	233		15	563	160	166	237
4. Motor vehicle in traffic	13756	13	1188	308	222	658	12555	15	2402	571	432	1399
5. Parked motor vehicle	3782	1	116	53	38	35	3665	1	180	71	43	66
6. Railroad train	40	2	12	8	3	1	26	6	13	9	3	1
7. Bicyclist	194		193	36	48	109	1		202	38	49	115
8. Animal	13		2	1	1	1	11		2		1	1
9. Fixed object	37		3	2	1		34		3	2	1	1
10. Other object	53	2	4	2	1	1	47	2	6	2	3	1
11. Other non-collision	104	1	23	11	8	4	80	1	23	11	8	4
12.												
Totals	20084	49	2427	752	534	1111	17608	60	3875	1096	836	1943

2. TYPE OF ACCIDENT	Comparative Totals								
	Same Month Last Year			This Year to Date			Same Period Last Year		
	All Accidents	Persons Killed	Persons Injured	All Accidents	Persons Killed	Persons Injured	All Accidents	Persons Killed	Persons Injured
Motor Vehicle									
1. Ran off road				1494	18	466	1503	10	452
2. Overturned on road				46	2	15	42	2	23
3. Pedestrian				565	15	563	629	23	625
4. Motor vehicle in traffic				13756	15	2402	15774	28	3017
5. Parked motor vehicle				3782	1	180	4039	1	218
6. Railroad train				40	6	13	30	1	12
7. Bicyclist				194		202	245	1	243
8. Animal				13		2	6		2
9. Fixed object				37		3	59		11
10. Other object				53	2	6	74		8
11. Other non-collision				104	1	23	122		46
12.									
Totals				20084	60	3875	22523	66	4657

3. STREET CLASSIFICATION	A. Trafficways Administered by Governmental Agencies: State Highway Department, county, city, etc.						B. Trafficways Administered by Independent Agencies: Turnpike, parkway, military, freeway authorities and commissions, etc.					
	Number of Accidents				Number of Persons		Number of Accidents				Number of Persons	
	Total	Fatal	Non-Fatal	Property Damage	Killed	Injured	Total	Fatal	Non-Fatal	Property Damage	Killed	Injured
Controlled access hwy	754	4	97	653	7	194						
2. State routes												
3. County routes												
4. Other local streets	19330	45	2330	16955	53	3681						
Totals	20084	49	2427	17608	60	3875						

4 AGE OF CASUALTY	Persons Killed									Persons Injured								
	Total Killed			Pedestrians			Bicyclists			Total Injured			Pedestrians			Bicyclists		
	Total	Male	Female	Total	Male	Female	Total	Male	Female	Total	Male	Female	Total	Male	Female	Total	Male	Female
1. 0 - 4	7	1	6	6	1	5				196	112	84	62	41	21	4	3	1
2. 5 - 9	2	2		1	1					420	256	164	204	130	74	68	56	12
3. 10 - 14	2	1	1							266	161	105	77	50	27	82	70	12
4. 15 - 19	12	8	4	2	1	1				619	375	244	53	36	17	20	19	1
5. 20 - 24	6	5	1							615	356	259	25	16	9	5	4	1
6. 25 - 34	4	3	1							642	374	268	22	13	9	1	1	
7. 35 - 44	7	4	3							357	186	171	19	12	7	2	2	
8. 45 - 54	4	4		1	1					355	183	172	18	13	5	2	1	1
9. 55 - 64	8	5	3	2	2					214	113	101	22	15	7	2		2
10. 65 - 74	4	3	1							84	36	48	12	6	6	1		1
11. 75 & older	4	1	3	4	1	3				50	19	31	11	4	7			
12. Not stated										57	39	18	38	23	15	15	13	2
Totals	60	37	23	16	7	9				3875	2210	1665	553	359	204	202	169	33

S. TIME Hour Beginning	Total Accidents		Monday		Tuesday		Wednesday		Thursday		Friday		Saturday		Sunday		Not stated	
	All	Fatal	All	Fatal	All	Fatal	All	Fatal	All	Fatal	All	Fatal	All	Fatal	All	Fatal	All	Fatal
0 Midnight	559	5	40		37		61		68	2	73	1	162	2	118			
1. 1:00	446		30		37		32		16		62		120		119			
2. 2:00	471	3	17		34		42		47		69		134	1	128	2		
3. 3:00	246	3	25	2	23		10		26		34		62	1	66			
4. 4:00	116	1	9		12		9		9		14		31	1	32			
5. 5:00	83		4		17		13		5		13		16		15			
6. 6:00	328	1	54		58		54		65	1	47		27		23			
7. 7:00	669	3	131		114		139	2	128	1	102		33		22			
8. 8:00	900	2	170	2	184		164		156		144		63		19			
9. 9:00	584	2	90	1	97		89		104	1	90		71		43			
10. 10:00	714	3	115	1	85	1	92		91		125		135		71	1		
11. 11:00	941	1	146	1	124		136		145		160		168		62			
12. Noon	1089	1	159		156		159		144		186	1	191		94			
13. 1:00	1127		127		145		166		175		192		199		123			
14. 2:00	1273	1	235	1	168		156		197		224		182		110			
15. 3:00	1848	4	304		286		311		278		355	2	204	1	110	1		
16. 4:00	1585	3	233		217		286	1	234		307	1	182	1	126			
17. 5:00	1543		206		227		303		214		317		187		89			
18. 6:00	1140	4	148		125		208		130		219	1	185	1	125	2		
19. 7:00	993	1	108		115		155		128		181	1	176		130			
20. 8:00	821	1	87		107		134		90		152		160	1	91			
21. 9:00	755	3	91		88		130		102	1	137	1	130	1	77			
22. 10:00	709	3	69	1	80		112	1	96		145		136		71	1		
23. 11:00	744	4	63		67		92		102		183	1	167	3	70			
24. Not stated	400		46		54		45		49		78		70		58			
Totals	20084	49	2708	9	2657	1	3098	4	2829	6	3609	9	3191	13	1992	7		

6. DIRECTIONAL ANALYSIS

An accident consisting of a series of collisions, overturning, etc., is classified according to the first event.

A. TWO MOTOR VEHICLE INTERSECTION ACCIDENTS	All Accidents	Fatal Accidents	Non-Fatal Injury Acc.	Property Damage Accidents
1. Entering at angle	3252	3	497	2752
2a. From same dir.-both going straight	695		30	665
b. Same-one turn, one straight	1150		38	1112
c. Same-one stopped	3150	1	165	2984
d. Same-all others	655		19	636
3a. From opposite dir.-both going straight	217	1	36	180
b. Same-one left turn, one straight	675		97	578
c. Same-all others	12		10	2
4. Not stated				
Totals	9806	5	892	8909

C. PEDESTRIAN ACCIDENTS	All Pedestrian Accidents	Fatal Accidents			Non-Fatal Injury Accidents		
		Total Fatal Accidents	Inter-section	Non Inter-Section	Total Non-fatal Injury Acc.	Inter-section	Non-Inter-section
1. Car going straight	559	13	5	8	546	234	312
2. Car turning right	2				2	1	1
3. Car turning left							
4. Car backing	4	1		1	3	1	2
5. All others							
6. Not stated							
Totals	565	14	5	9	551	236	315

B. TWO MOTOR VEHICLE NON-INTERSECTION ACCIDENTS	All Accidents	Fatal Accidents	Non-Fatal Injury Acc.	Property Damage Accidents
1. Going opposite dir.-both moving	313	4	56	253
2. Going same dir.-both moving	912	2	49	861
3a. One car parked	3140	1	89	3050
b. One car stopped in traffic	1505	1	128	1376
4a. One car entering parked position	29		1	28
b. One car leaving parked position	284		8	276
5a. One car entering alley or driveway	505	1	42	462
b. One car leaving alley or driveway	1040		55	985
6. All others -	4			4
7. Not stated				
Totals	7732	9	428	7295

D. ALL OTHER ACCIDENTS	All Accidents	Fatal Accidents	Non-Fatal Injury Acc.	Property Damage Accidents
1a. Collision with non-motor veh., train streetcar, bicycle, etc.-at intersection	89	1	81	7
b. Same-not at intersection	135	2	116	17
2a. Collision with fixed object in roadway-at intersection	16			16
b. Same-not at intersection	24		3	21
3a. Overturned in roadway-at intersection	2	1		1
b. Same-not at intersection				
4. Left roadway-at intersection	491	5	127	359
5. Left roadway-at curve-not at intersection	24	2	7	15
6. Left roadway on straight road-not at intersection	976	8	184	784
7. Fell from moving vehicle	43	1	20	22
8. All others	180	1	18	161
9. Not stated	1			1
Totals	1981	21	556	1404



7. PEDESTRIAN ACTIONS BY AGE	Pedestrians Killed	Pedestrians Killed and Injured									
		Age									
		Total	0-4	5-9	10-14	15-19	20-24	25-44	45-64	65 & older	Not Stated
1a. Crossing or entering roadway at intersection	6	182	9	56	22	23	12	10	19	31	
b. Same-not at intersection	7	342	53	138	44	26	11	23	19	28	
2a. Walking in roadway with traffic		10		2	1	2	1	1	2	1	
b. Same-against traffic		6				1			1	4	
3. Standing in roadway	1	3			1	1			1		
4. Getting on or off other vehicle		9		1	2		1	2	2	1	
5. Pushing or working on vehicle in roadway		6	1		3	1		1			
6. Other working in roadway		1						1			
7. Playing in roadway		12	5	6	1						
8. Other in roadway											
9. Not in roadway	2	7		2	2	1			1	1	
10. Not stated		1			1						
Totals	16	579	68	205	77	55	25	38	45	66	

( Excluding drivers of cars in proper parking locations )

8. AGE OF DRIVER	All Accidents	Fatal Accidents	Non-Fatal Injury Acc.
1. 15 & younger	29	1	5
2. 16	795	2	89
3. 17	1227	1	134
4. 18-19	3026	11	102
5. 20-24	5874	10	609
6. 25-34	6294	13	824
7. 35-44	4426	10	510
8. 45-54	4233	8	495
9. 55-64	2846	5	301
10. 65-74	1264	5	124
11. 75 & older	432		38
12. Not stated	1269		134
Totals	34715	66	3775

( Including cars in proper parking locations )

12. TYPE OF MOTOR VEHICLE	All Accidents	Fatal Accidents	Non-Fatal Injury Acc.
1. Passenger car	35813	63	3548
2. Passenger car and trailer	12		2
3. Truck or truck tractor	2226	2	168
4. Truck tractor and semi-trailer	280	1	41
5. Other truck combination	78	1	8
6. Farm tractor and/or farm equip.	3		
7. Taxicab	93	1	13
8. Bus	189		14
9. School bus	41		3
10. Motorcycle	239	2	117
11. Motor scooter or motor bicycle	5		3
12. Others and not stated	91		31
Totals	39072	70	3948

Special vehicles included above.

13. Emergency vehicle (including privately owned)			
14. Military vehicles			
15. Other publicly owned vehicles			

9. SEX OF DRIVER	All Accidents	Fatal Accidents	Non-Fatal Injury Acc.
1. Male	22893	55	2649
2. Female	9122	11	1037
3. Not stated	2700		89
Totals	34715	66	3775

10. RESIDENCE OF DRIVER	All Accidents	Fatal Accidents	Non-Fatal Injury Acc.
1. Local resident	26810	44	3071
2. Residing elsewhere in state	3224	18	393
3. Non-resident	1911	4	214
4. Not stated	2770		97
Totals	34715	66	3775

13. ROAD SURFACE CONDITION	All Accidents	Fatal Accidents	Non-Fatal Injury Acc.
1. Dry	14106	40	1881
2. Wet	4224	7	447
3. Snowy or icy	1754	2	99
4. Other			
5. Not stated			
Totals	20084	49	2427

11. CONTRIBUTING CIRCUMSTANCES INDICATED	All Accidents	Fatal Accidents	Non-Fatal Injury Acc.
1. Speed too fast	466	7	53
2. Failed to yield right of way	2705	10	421
3. Drove left of center	357	5	43
4. Improper overtaking	341		13
5. Passed stop sign	10		
6. Disregarded traffic signal	728	3	185
7. Followed too closely	2014	1	101
8. Made improper turn	665		30
9. Other improper driving	5933	14	482
10. Inadequate brakes	189		17
11. Improper lights	54		4
12. Had been drinking	897	6	230
Totals	14359	46	1579

14. KIND OF LOCATION	All Accidents	Fatal Accidents	Non-Fatal Injury Acc.
1. Apartments, stores, factories	12386	26	1507
2. One family homes	5567	13	760
3. Farms, fields	292	4	46
4. No marginal development	839	6	114
Not Stated			
Totals	20084	49	2427

15. LIGHT CONDITION	All Accidents	Fatal Accidents	Non-Fatal Injury Acc.
1. Daylight	13267	21	1605
2. Dawn or dusk	914	2	75
3. Darkness	5900	26	746
4. Not stated	3		
Totals	20084	49	2427

The following is a recap of the activities of the civilian personnel in the Traffic Bureau for 1971. The increase in activity is being handled by the same amount of personnel.

Total amount of parking tickets paid in 1971	----- 66,282	\$353,149.50
Other revenue from the copying of police reports		<u>55,129.50</u>
Total revenue for 1971		\$408,279.00

The Traffic Bureau has eight civilian employees which in addition to collecting and recording parking tag fines, maintain the files for moving violation citations and record and process the accidents occurring in the City of Toledo.



MOVING VIOLATION ARRESTS  
 PARKING TICKETS ISSUED  
1971

<u>VIOLATIONS CHARGED</u>	<u>1971</u>	<u>1970</u>
Red Lights	6,457	5,966
Speeding	32,296	20,271
Operating without Due Regard	4,047	4,678
Driving Under the Influence	1,521	1,709
Improper turns	2,763	2,568
One way streets	941	811
Driver license violation	4,803	4,417
Crowding driver	14	33
Right of way	2,678	3,211
Left side of street	373	425
Safety Stops	2,728	2,203
Truck on Boulevard	147	55
License Plate Violation	630	682
Improper Lights	1,126	1,188
Excessive Noise	2,178	2,482
Miscellaneous	2,837	3,233
Hit Slip	<u>868</u>	<u>1,151</u>
TOTAL	<u>66,407</u>	<u>55,073</u>
Meter	54,929	53,886
Improper Lights	115	104
In an Alley	547	569
Double Parking	528	529
Restricted Zones	35,345	32,807
Limited Areas	6,975	8,379
Building Line and Curb	904	1,031
Left Side of Street	920	1,031
Miscellaneous	<u>1,618</u>	<u>1,014</u>
TOTAL	<u>101,881</u>	<u>99,350</u>