

TOLEDO POLICE DIVISION

1989

ANNUAL REPORT



# TABLE OF CONTENTS

<b>PART I</b>	<b>-</b>	<b>INTRODUCTION</b>	
		<i>Law Enforcement Code of Ethics</i>	1
		<i>Letter of Transmittal</i>	3
		<i>City Government Organizational Chart</i>	4
		<i>Toledo City Government</i>	5
		<i>Police Division Organizational Chart</i>	6
<b>PART II</b>	<b>-</b>	<b>ITEMS OF INTEREST</b>	
		<i>History of the Division</i>	7
		<i>Past and Present Chiefs of Police</i>	14
		<i>Officers Killed in the Line of Duty</i>	15
		<i>1989 Retirements</i>	17
		<i>1989 Division Service Awards</i>	18
<b>PART III</b>	<b>-</b>	<b>POLICE ADMINISTRATION</b>	
		<i>Unit Descriptions</i>	20
		<i>1989 Budget Summary</i>	22
		<i>Internal Affairs Section Summary</i>	23
		<i>Division Profile</i>	
		* <i>Personnel by Race-Gender-Rank</i>	24
		* <i>Average Age - Years of Service by Rank</i>	24
		* <i>Average Age - Years of Service by Section</i>	25
		* <i>Command Officer Distribution by Bureau</i>	26



* <i>Patrol Officer Distribution by Bureau</i>	27
* <i>Years of Service Categories</i>	28
* <i>Patrol Officers</i>	29
* <i>Sergeants</i>	30
* <i>Lieutenants</i>	31
* <i>Captains/Deputy Chiefs</i>	32
 <i>Personnel Distribution Chart</i>	 33

**PART IV - FIELD OPERATIONS BUREAU**

<i>Section/Unit Descriptions</i>	34
<i>Districts Map</i>	36
<i>Calls for Service by Shift</i>	37
<i>Staffing Levels by Shift</i>	37
<i>Harbor Patrol Summary</i>	40
<i>Mounted Patrol Summary</i>	40
<i>Hit-Skip Accident Unit Summary</i>	40
<i>Accident Summary</i>	41

**PART V - INVESTIGATIVE SERVICES BUREAU**

<i>Description of Administrative Unit</i>	43
<i>Description of Property Recovery Unit</i>	43
<i>Crime Stopper Program Data</i>	44
<i>Crimes Against Persons Section</i>	
* <i>Description of Units</i>	45
* <i>Case Information</i>	46
<i>Crimes Against Property Section</i>	
* <i>Description of Units</i>	47
* <i>Case Information</i>	48



<i>Vice/Metro and Youth Services</i>	
* <i>Description of Sections</i>	49
* <i>Case Information</i>	50

**PART VI - SUPPORT SERVICES BUREAU**

<i>Description of Sections</i>	52
<i>Records Section Summary</i>	54
<i>Training Section Summary</i>	55
<i>Community Affairs Section</i>	57
<i>Block Watch Summary</i>	57
<i>Property Management Summary</i>	58
<i>Communication Section Summary</i>	59

**PART VII - CRIME DATA**

<i>Violent and Property Crime Rates</i>	60
<i>Violent and Property Crime by Month of Year</i>	61
<i>Class I Crimes</i>	
<i>Murder</i>	62
<i>Rape</i>	63
<i>Robbery</i>	64
<i>Aggravated Assault</i>	65
<i>Burglary</i>	66
<i>Larceny \$300+</i>	67
<i>Larceny \$299-</i>	68
<i>Auto Theft</i>	69



**UCR Data 1980 - 1989**

<b>Crime Index</b>	<b>70</b>
<b>Violent Crimes</b>	<b>71</b>
<b>Property Crimes</b>	<b>72</b>
<b>Murder</b>	<b>73</b>
<b>Rape</b>	<b>74</b>
<b>Robbery</b>	<b>75</b>
<b>Aggravated Assault</b>	<b>76</b>
<b>Burglary</b>	<b>77</b>
<b>Theft</b>	<b>78</b>
<b>M/V Theft</b>	<b>79</b>
<b>Domestic Violence Complaints Filed</b>	<b>80</b>
<b>Percent DV Complaints by Complainant Category</b>	<b>81</b>
<b>Injury vs Non-Injury DV Complaints by Month</b>	<b>82</b>



# **INTRODUCTION**



## LAW ENFORCEMENT CODE OF ETHICS

*As a law enforcement officer, my fundamental duty is to serve mankind; to safeguard lives and property; to protect the innocent against deception; the weak against oppression or intimidation, and the peaceful against violence or disorder; and to respect the constitutional rights of all persons to liberty, equality, and justice.*

*I will keep my private life unsullied as an example to all; maintain courageous calm in the face of danger, scorn or ridicule; develop self-restraint; and be constantly mindful of the welfare of others. Honest in thought and deed in both my personal and official life, I will be exemplary in obeying the laws of the land and regulations of my department. Whatever I see or hear of a confidential nature or that is confided to me in my official capacity will be kept ever secret unless revelation is necessary in the performance of my duty.*

*I will never act officiously or permit personal feelings, prejudices, animosities or friendships to influence my decisions, with no compromise for crime and with relentless prosecution of criminals. I will enforce the law courteously and appropriately without fear or favor, malice or ill will, never employing unnecessary force or violence and never accepting gratuities. I recognize the badge of my office as a symbol of public faith, and I accept it as a public faith, and I accept it as a public trust to be held so long as I am true to the ethics of the Police Service. I will constantly strive to achieve these objectives and ideals, dedicating myself before God and my chosen profession - Law Enforcement.*





**MARTI D. FELKER**  
*Chief of Police*

PH  
RAY  
Commissio

P  
O  
T  
D  
I  
D  
C  
T  
n  
F  
ir  
B  
a  
N  
d  
T  
s  
O  
D  
I  
a



# CITY OF TOLEDO OHIO



## DIVISION OF POLICE

PHILIP A. HAWKEY  
City Manager

RAYMOND J. NORRIS  
Safety Director  
Commissioner - Traffic Engineering

Safety Building  
525 N. Erie Street  
Toledo, OH 43624-1345

MARTI D. FELKER  
Chief of Police

April 2, 1990

Philip Hawkey  
City Manager  
One Government Center  
Toledo, Ohio 43624

Dear Mr. Hawkey:

I am pleased to present the Toledo Police Division's 1989 Annual Report.

During the past year the Division aspired to accomplish its stated mission: *To serve every segment of the community by providing continuous protection and the highest possible level of professional service.*

Through increased emphasis on offensive operations, directed at drug related problems in our neighborhoods, the Metro Drug Task Force became self-funded; now operating on funds received from Federal Forfeiture actions. This year, an estimated \$3,500,00.00 in illegal drugs were destroyed and \$500,000 in illegal assets seized and converted to legitimate use in the drug problem.

By expanding its role as a lead agency in community based crime prevention programs, the Division was able to increase the number of citizens participating in the "Block Watch Program", implement a Police And Neighborhood Drug Alliance (PANDA), and receive a Police And Citizens Together (PACT) grant aimed at drug and gang crime prevention efforts.

Transition to a Computer Aided Dispatch and 9-1-1 emergency telephone system, conversion to the 9MM service weapon, renovation of the Safety Department Communications Center (800 MHz), and construction of a state-of-the art firearms training facility are a few of the other major accomplishments in 1989 that the Division looks back on with pride.

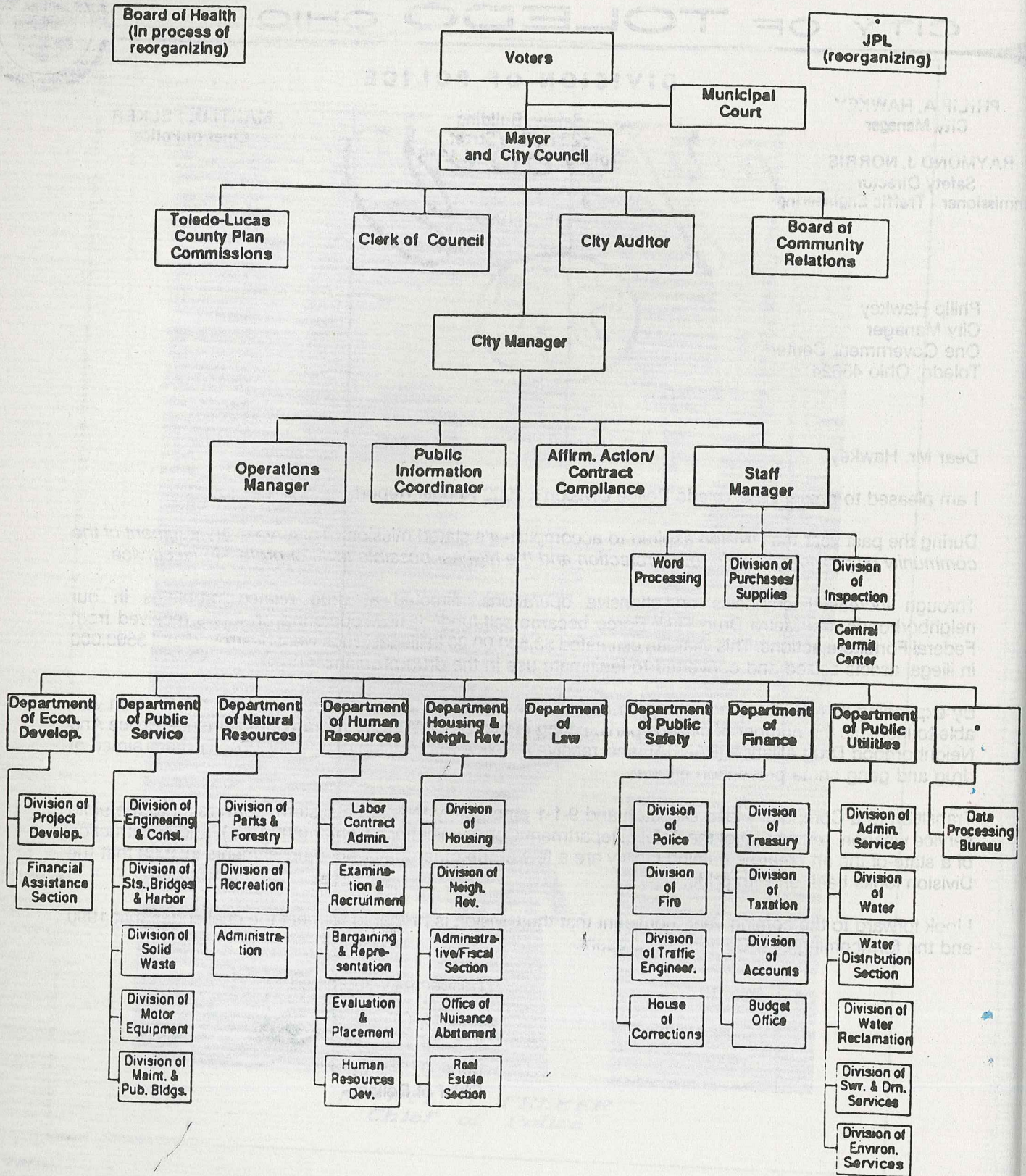
I look forward to the coming year, confident that the Division is prepared to meet the challenges that 1990 and the forthcoming 21st Century will present.

Respectfully submitted,

Marti D. Felker,  
Chief of Police



# City of Toledo Organizational Chart





## TOLEDO CITY GOVERNMENT

Toledo, Ohio's fourth largest city and the nation's 45th largest, is the seat of Lucas County. Located on the western shore of Lake Erie, it is the major trading center for 14 counties in Northwestern Ohio and Southeastern Michigan. Its 342,400 residents live in an 86 square mile area. Known as the "Glass Capitol of the World," and the home of the famous "Jeep" vehicles, Toledo is one of the nation's most important distribution centers.

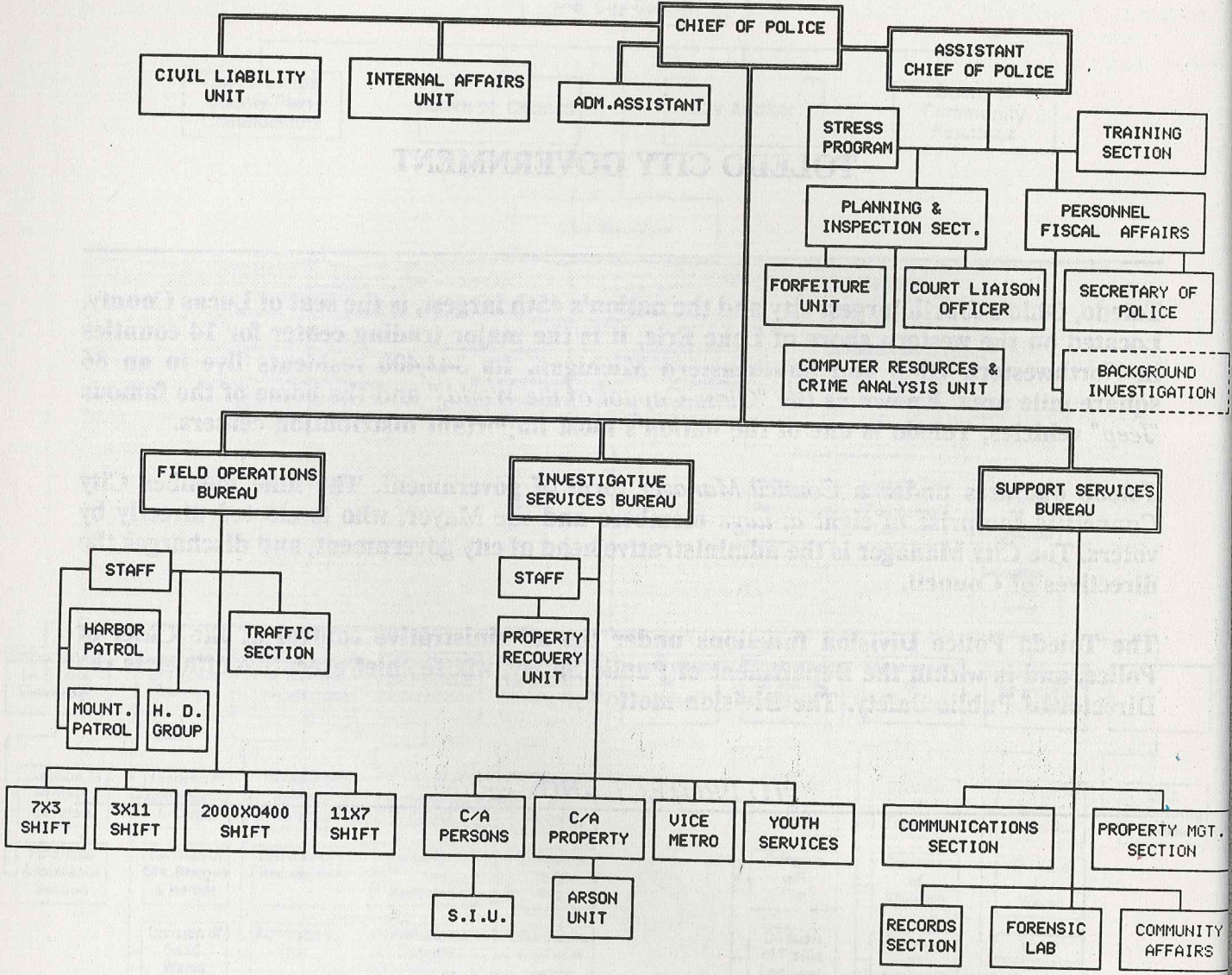
Toledo operates under a *Council-Manager* form of government. The nine member City Council is comprised of eight *at-large* members and the Mayor, who is elected directly by voters. The City Manager is the administrative head of city government, and discharges the directives of Council.

The Toledo Police Division functions under the administrative control of the Chief of Police, and is within the Department of Public Safety, whose chief executive officer is the Director of Public Safety. The Division motto is:

*TO PROTECT AND SERVE*



**TOLEDO POLICE DIVISION**  
**ORGANIZATIONAL CHART**  
 ( DEC 1989 )





TRAINING  
SECTION

LABOR  
AFFAIRS

CLERK  
OFFICE

INVESTIGATION

RES

PROPERTY MGT.  
SECTION

COMMUNITY  
AFFAIRS

# ITEMS OF INTEREST



## HISTORY OF THE TOLEDO POLICE DIVISION

1836

The City of Toledo was incorporated by an act of the State Legislature.

1837

The first City Charter was adopted. Calvin Comstock was appointed as the first City Marshal. Prior to that, justice was administered by the Justice of the Peace and his constables.

1840-1850

The population of the City rose from 1220 to 3827.

1852

A volunteer police force was authorized by the City Council with the same police powers as the City Marshal.

1853

By Council Resolution, the "night watch" was initiated with a watchman for each of the four wards to patrol only during the night. The mayor had the right to appoint and regulate as he deemed necessary, with the advice of Council. The City Marshal was designated as the Captain of the Night Watch.

1865

The City Marshal was made a part of the Police Board. City Council Resolution stated, "If the Police Board shall deem it necessary at anytime, they may detail one or more of the police of the city to serve as Day Patrolman." This was the first time authorization had been given for a daytime police officer.

1867

Because of the increase in population (20,000), Toledo advanced to a City of the First Class in grade, and was invested with a local municipal government, including a Metropolitan Police Force. The Clerk of Council was instructed to begin paying salaries to police officers. Previously, any pay which the police had collected was through private contributions. Needless to say, those who contributed the most were accustomed to receiving the most protection. Thus, the City Marshal and the volunteer police force was deposed. Three Police Commissioners were selected. Henry Breed was named Captain (*Chief*) of Police, and thirteen policemen were hired, as well as a Sergeant and Turnkey. Each patrolman was paid \$720 annually. The total annual budget was \$21,980, which included equipment maintenance, all salaries, and the upkeep of the prisoners in the City Jail. Patrolmen were assigned to work fourteen hours on the Day Shift, and ten hours on the night shift, seven days a week.

The first Detective, Elijah Hanks, was officially appointed. The Chain Gang was abolished in Toledo, and the first In-Service Training was offered. The training, which involved the reading of the Department Rules and Regulations, was conducted at least once a week by the Captain.

1869

Henry Nellis, who was found sleeping on duty, became the first officer to be fired from the Toledo Police Force.



1871

Two *Sanitary Police* were appointed. Their duties consisted on fumigating homes where needed, and enforcing quarantines.

1874

By City Ordinance, the title of *Superintendent of Police* was changed to *Chief of Police*. The work hours for the officers was shortened to approximately 12 hours for the day shift, and 10 hours for the night shift. The rank of *Roundsman* was established with the duty of going to each District Beat and making sure that the assigned beatman was there, and to collect any information the beatman may have. This was the only means of communication between headquarters and the street officer.

1879

The limited use of photographs was initiated for criminal identifications.

1880

The First Metropolitan Board was instituted, with the local board members selected by the Governor. Subsequently, the members were elected by the public for four year terms.

The rank of *Detective* was permanently established by the Board of Police Commissioners. The City allowed for the appointment of a maximum of ten officers to the rank of Detective. William Scott became the first Chief of Police under the Metropolitan System.

1882

The City adopted the *Bertillion System* of measurements, as well as the *Scar and Mark System* for criminal identification. The Bertillion System involved the measuring of almost every part of the body, including the circumference of the head, the total span of the arms, etc. The Scar and Mark System involved the detailed listing of any scar or mark on a prisoner's body.

1883

The first patrol wagon (*horse and buggy*) was purchased to be used for the transportation of prisoners. Previously, all prisoners had to be walked to the station for booking, which often became a problem dealing with highly intoxicated persons. One industrious officer solved this problem by borrowing a wheelbarrow for these situations.

1890

The City began to install over 100 alarm boxes in various neighborhoods through which the beat officers could be summoned.

1898

A police substation was opened at 612 Lagrange Street. Headquarters remained located at 20 North Superior Street.



1899

The City's population increased to 115,674, necessitating the assignment of an officer to traffic duty at the Summit and Cherry Streets intersection.

1900

Toledo now encompassed 28 square miles and employed 100 patrolmen, 11 command officers, and three Detectives. The City had two prisoner wagons; one at each station.

1903

With the increased use of photographs, the Police Department established a *Rogues Gallery*, and began to do away with the Bertillion System of Identification.

1905

The use of fingerprinting was adopted for identification purposes.

1907

The City purchased its first motorcycles for use by officers. At first, they were used only for emergency reasons. Reports indicated that two detectives, assigned to nights, were dispatched to the scene of a burglary-in-progress on their motorcycles. After apprehending the burglars, they did not wish to waste time waiting for the horse and buggy wagon, so they drove the prisoners back to the station on the handlebars of the motorcycles, at speeds up to 50mph.

1908

The Toledo Police Department adopted a mounted horse unit. Each officer assigned to the Mounted Unit was required to care for his horse, which included feeding, cleaning, and grooming. The Mounted Unit remained operational until 1928.

1911

The Police Department added a full Motorcycle Squad, consisting of 20 officers.

1919

The position of *Turnkey* was filled with a sworn police officer, rather than a civilian. The first Police Woman was assigned with the duty of watching dance halls and other places of public amusement, as well as handling certain cases involving women. The remainder of her time was spent on patrol.

1924

The Toledo Police Pistol Range was dedicated. The range was built by members of the Department and was reported to be one of the finest ranges in the Country, if not the World. It was estimated at the time to have been worth \$100,000 however, the total construction cost was a mere \$5.60. Most of the materials were donated, and the labor was performed by the officers themselves.



## 1925

The Police Department moved from the 80 year old structure on Superior Street to the newly built, *Safety Building* at 525 North Erie Street, where the Division is currently housed.

## 1926

The *Women's Bureau* was formed to handle cases of missing girls and women, and any other cases involving females. Sergeant Margaret Slater headed the Unit for 29 years. Harold Towe, a professor at the University of Toledo, wrote in his history of the police department, "*It must be said that the Women's Bureau has, from its inception, been an honest to goodness police unit, making its own investigations, check-ups, and arrests. They have been Police Officers, not social workers.*"

Harry Jennings, Chief of Police, instituted the concept of probation in the courts by establishing the *Reclaiming and Probation Division* within the Police Department. Police Officers assigned to the Division, first interviewed offenders prior to their court appearance, after which a recommendation was made to the Court. If the offender was released, the officer worked closely with him for approximately six months.

## 1928

The memorial monument for police officers killed in the line of duty was dedicated. It was said to be the only memorial in the Country conceived and built by police officers, and was regarded as a fine work of art and architecture.

## 1930

The Department inaugurated radio communications with the installation of two way radios in all police vehicles. It began broadcasting on station *WRDQ*.

## 1932

The first police school was instituted with private, qualified citizens donating their time and expertise. The first class lasted eight weeks. The Identification Bureau, which previously was operational only during the day shift, began remaining open during evening hours.

## 1934

With the establishment of a school for traffic violators, whose instructors were police officers, a judge now had the options of ordering traffic violators to attend the school to improve their basic driving skills.

## 1937

The *Crime Laboratory* was established. Limited scientific and chemical analyses were previously conducted at the University of Toledo.

With the establishment of the *Juvenile Bureau*, the Division began expanding its responsibilities into the realm of prevention, which was consistent with the changing concept of law enforcement.

An *Accident Investigation Squad* was also established in this year. There were 900 automobile accidents in the City during 1937.



1938

The *Toledo Police Academy* was initiated and graduated its first class.

1940

Nine policemen began flight training to become *Policemen of the Air*, as soon as the Department received its first airplane.

1948

McCarthy Stadium in Highland Park was dedicated to Lt. John McCarthy, who was killed in the line of duty on January 7, 1947. His name, along with the 21 officers who predeceased him, were commemorated on a plaque at the Stadium.

1949

Radar was adopted by the Department for use in traffic enforcement.

1952

A Police Library was begun, under the guidance of Inspector Roth of the Police Academy.

A *Harbor Patrol Unit* became operational on a part time basis, with a borrowed boat.

1953

Due to a high injury rate, the two-wheel Motorcycle Squad was abolished.

1955

The City was given a retired U.S. Coast Guard boat to enforce the water law in the Toledo area. This was the beginning of the beginning of a full-time Harbor Patrol.

1958

The police work week was reduced from 48 to 44 hours, which remained in effect until 1960, when it was reduced to a 40 hour work week.

1960

The uniform was modified by adding shoulder patches and changing from the traditional eight point, blue hat to a white trimmed hat.

1963

Due to major annexation in the metropolitan area, police patrol responsibility increased to 76.8 square miles, and the population increased to over 370,000 residents. In less than two years, the City had grown over 19 square miles. The police budget was \$3.3 million.



**1964**

Patrol districts were reorganized from 17 basic beats to 20. In addition, the Police Division initiated an 8:00pm - 4:00am *Selective Enforcement* shift to supplement district patrol units.

The *Police Auto Pound* discontinued operations, and a private garage was authorized to take over the storage of vehicle in police custody.

**1966**

The Division began using portable *Walkie-Talkie* radios, with a great deal of success.

**1970**

Officer William Miscannon was fatally shot at the corner of Junction and Dorr Streets on September 18.

**1973**

The first female was graduated from the Toledo Police Academy with the rank of *Patrolman*. The Division adopted the *One-Man Patrol Unit* concept.

**1974**

Air-conditioning was placed into marked police vehicle for the first time.

**1976**

The *Scott Park District Station* was opened, thus becoming the first substation since 1925.

**1977**

The Division closed the men's and women's jail facilities in the Safety Building, and began booking prisoners at the newly built, Lucas County Corrections Center. This ended a 140 year era, which began in 1837, of the Police Division housing its own prisoners.

**1980**

All Field Operations and Investigative functions were removed from the Scott Park District Station, thereby returning the Division to a centralization of line operations. The Scott Park facility began housing the Community Relations and Crime Prevention Sections.

**1982**

Due to severe fiscal problems facing the City, nearly all civilian police employees were laid off. Many returned to their jobs later in the year after the passage of a payroll income tax.



#### 1984

Due to increased resources resulting from economic growth and increased municipal tax revenues, the Division restored all services to the public. Manpower was brought up to its authorized strength of 725; the first time since 1978. The Police Academy graduated the largest class in its history -- 121.

Beat patrol officers returned to the revitalized downtown area; particularly Portside, the downtown marketplace.

#### 1985

City Council approved an increase in the Division's authorized strength of 25 officers, thereby raising the strength to 750; the highest strength since 1977, when it was reduced to 725. The Division's records keeping responsibility was computerized. Redistricting took place, doing away with the basic 22 districts and replacing them with a flexibeat system, consisting of 7 primary sectors with numerous beats within each. The traditional 2 or 3 digit call numbers were replaced with a number-letter combination, such as 3-D-14.

Chief John Mason authorized the implementation of a Mounted Patrol Unit in March 1986. Two Sergeants and nine Patrol Officers were selected to undergo training at the Detroit Mounted Police Stables.

#### 1986

The *Mounted Patrol Unit* began operation on March 3, 1986, and instantly became a success with the public. The officers in the unit are the first horse-back officers in Toledo since 1928.

#### 1987

On August 26th, Marti D. Felker was appointed Chief of Police, succeeding John Mason, who retired in June.

#### 1988

In January, the *Forfeiture Unit*, whose primary responsibility is to institute civil forfeiture proceedings against individuals who use or derive personal assets during the course of criminal conduct, became fully operational.

The Mounted Patrol Unit established its stable facility in the building at 1820 N. 12th; site of the former Sealtest Dairy garage.

On January 18th the Division returned to the blue hat as part of the official uniform.

#### 1989

On March 21st City Council raised the Division's authorized strength from 750 to 775.

In October, the Division began the first phase its transition from the traditionally issued 38 caliber revolver to the 9mm automatic pistol. Vice-Metro and Directed Patrol Officers were the first to receive the week long training in the use of the weapon. Complete transition to the 9mm pistol is expected to occur by February 1991.



# POLICE CHIEFS - PAST AND PRESENT

HENRY BREED	1867 - 1868
WILLIAM P. SCOTT	1868 - 1871
JOSEPH A. PARKER	1879 - 1881
JOSIAH C. PURDY	1872 - 1879 1883 - 1885
EGBERT E. MORSE	1881 - 1882
GENERAL JAMES BLAIR STEEDMAN	1882 - 1883
EDWARD O'DWYER	1885 - 1892
BENJAMIN F. RAITZ	1892 - 1902
PERRY D. KNAPP	1902 - 1914
GEORGE A. MURPHY	1914 - 1915
HENRY J. HERBERT	1915 - 1922
HARRY JENNINGS	1922 - 1928
LOUIS J. HAAS	1928 - 1932 1932 - 1933
WILLIAM D. DELEHANTY	FEB. 1932 MAR. 1932
DANIEL T. WOLFE	1933 - 1936
RAY E. ALLEN SR.	1936 - 1956
ANTHONY A. BOSCH	1956 - 1970
ROBERT J. DUCK	1970 - 1974
CORRIN J. MCGRATH	1974 - 1978
WALTER SCOBLE	1978 - 1980
JOHN W. MASON	1980 - 1987
MARTI D. FELKER	1987 - PRESENT



## OFFICERS KILLED IN THE LINE OF DUTY

**Officer John Hassett - March 5, 1880**

\* *Killed by falling debris during tornado.*

**Officer Charles Russell - October 9, 1906**

\* *Shot by unknown suspect - details unknown.*

**Sergeant James Boyle - May 5, 1908**

\* *Shot and Lafayette and Erie Streets by a burglary suspect.*

**Officer Harry Smith - September 25, 1911**

\* *Shot while responding to a burglary call near Monroe and Bancroft.*

**Officer Albert Schultz - August 7, 1914**

\* *Shot on Englewood Court by a burglary suspect.*

**Detective Kaiser Bartecki - January 21, 1915**

\* *Shot at 300 Kosciusko responding to a domestic dispute call.*

**Officer Adolph Reimer - August 25, 1915**

\* *Shot at 300 Woodland during landlord/tenant dispute.*

**Officer Louis Jaswiecki - March 31, 1918**

\* *Shot at unknown location by two robbery suspects.*

**Officer William Bather - May 27, 1919**

\* *Shot at City Park and Curtis by robbery suspects.*

**Officer George Zapf - September 23, 1919**

\* *Killed in a motorcycle accident at Superior and Madison.*

**Officer Harry Dowell - June 9, 1921**

\* *Shot at 611 Walnut in a landlord/tenant dispute.*

**Officer Harold Mossburger - June 9, 1921**

\* *Shot at 611 Walnut in a landlord/tenant dispute.*

**Officer William H. Kress - August 1, 1921**

\* *Shot on Canton Avenue while questioning suspects.*

**Officer Charles McGuire - December 22, 1921**

\* *Shot at Indiana and Division by an unknown suspect.*

**Officer William A. Reed - December 28, 1921**

\* *Shot on Canton Avenue while questioning a suspect.*



## OFFICERS KILLED IN THE LINE OF DUTY

**Officer Fritz Bacon - August 13, 1922**

\* *Struck by motor vehicle at Front and Main Streets.*

**Lieutenant William J. Martin - September 6, 1921**

\* *Shot at Fulton and Prescott by an auto theft suspect.*

**Detective William Julert - January 29, 1924**

\* *Shot while disarming a suspect.*

**Officer Walter Mullin - May 12, 1925**

\* *Shot while pursuing a prowler at Bennett and Clarence.*

**Officer George Zientara - April 16, 1928**

\* *Shot at 2304 Upton by robbery suspects.*

**Officer Edward O'Briest - May 19, 1931**

\* *Shot at 300 Moorish while working an undercover assignment.*

**Officer Edward Keim - August 11, 1932**

\* *Shot at Indiana and Heston during a robbery/kidnapping.*

**Officer Harvey O'Neil - November 8, 1936**

\* *Killed at Bancroft and Monroe Streets in a motorcycle accident.*

**Officer Fred W. Disel - May 5, 1944**

\* *Killed at Adams and Erie Streets in a motorcycle accident.*

**Detective Lt. John McCarthy - January 7, 1947**

\* *Shot at 600 Jackson while transporting prisoners.*

**Officer Albert Fadell - November 18, 1948**

\* *Killed at Canton and Beacon Streets in a motorcycle accident.*

**Officer Harold Stevens - July 3, 1948**

\* *Killed at Monroe and 17th Streets in an auto accident.*

**Officer Walter Boyle - December 8, 1961**

\* *Shot while serving an arrest warrant on Walden Street.*

**Officer Donald Brown - June 12, 1962**

\* *Shot on N. 14th Street during a domestic quarrel.*

**Officer William Miscannon - September 18, 1970**

\* *Shot while sitting in a patrol wagon at Dorr and Junction Streets.*



# 1989 RETIREMENTS

## Officer Gary Brock

*Appointed* 7-12-76  
*Retired* 5-11-89

## Lt. Francis L. Conger

*Appointed* 6-1-54  
*Retired* 5-17-89

## Sgt. Robert Cothorn

*Appointed* 10-1-56  
*Retired* 5-16-89

## Officer David Darascavage

*Appointed* 4-1-68  
*Retired* 10-10-89

## Officer George Early

*Appointed* 10-18-67  
*Retired* 10-19-89

## Officer Stephen Ezakovich

*Appointed* 4-1-68  
*Retired* 10-23-89

## Officer Ronald Gill

*Appointed* 10-1-65  
*Retired* 10-11-89

## Officer James Lopinski

*Appointed* 1-13-67  
*Retired* 10-12-89

## Officer Franklin Martin

*Appointed* 5-15-64  
*Retired* 7-17-89

## Sgt. Woodrow McCreary

*Appointed* 10-4-63  
*Retired* 11-17-89

## Officer Robert Mitro

*Appointed* 4-1-63  
*Retired* 5-2-89

## Sgt. Fred Neipp

*Appointed* 7-1-60  
*Retired* 7-6-89

## Officer Charles Overmeyer

*Appointed* 1-13-67  
*Retired* 7-24-89

## Sgt. Gary O'Bryant

*Appointed* 9-1-67  
*Retired* 5-16-89

## Officer Estelle Price-Esmond

*Appointed* 7-30-82  
*Retired* 12-22-89

## Sgt. Rose Reder

*Appointed* 4-1-59  
*Retired* 5-2-89

## Officer Dennis Reed

*Appointed* 9-1-67  
*Retired* 9-18-89

## Officer Timothy Rickheim

*Appointed* 7-12-76  
*Retired* 9-7-89

## Officer Duane Rymer

*Appointed* 10-1-65  
*Retired* 4-30-89

## Officer Fred Schroeder

*Appointed* 7-1-60  
*Retired* 4-26-89

## Lt. Homer Smith

*Appointed* 11-1-59  
*Retired* 7-7-89

## Officer Thomas Spetz

*Appointed* 4-1-62  
*Retired* 4-30-89

## Officer Richard Stewart

*Appointed* 11-1-59  
*Retired* 5-19-89

## Sgt. Eddie Turner

*Appointed* 11-1-59  
*Retired* 6-8-89



# DIVISION SERVICE AWARDS

## **MEDAL OF VALOR**

...The Division's Highest Award  
For Exceptional Bravery

*Sergeant Donald Kenney  
Officer William Gast*

*Officer Eugene Brownfield  
Officer Paul Long*

*Officer Neal Miller*

## **DISTINGUISHED SERVICE AWARD**

...The Division's Second Highest Award.  
Awarded for Individual Acts of Heroism

*Sergeant Donald Kenney  
Officer William Gast  
Officer David S. Swantek*

## **MEDAL OF MERITORIOUS SERVICE**

...For service beyond what is normally  
expected of an Officer

*Officer Gerald Matwieczyk  
Officer Stevan Ortega  
Officer Aaron Layson*

*Officer Randal Pepitone  
Sergeant David E. Smith  
Officer David S. Swantek*

## **PROFESSIONAL SERVICE AWARD**

...For an Officer who has maintained a  
continuous record of exceptional performance

*Capt. Edward Bombrys  
Lt. Ralph Kuyoth  
Lt. David Pawlecki  
Det. Debra Dunham  
Officer Jack McLuckie  
Det. Steven Palmer  
Officer Edwin Sommers*

*Lt. Nathaniel Ford  
Lt. Daniel Pfeiffer  
Lt. Homer Smith  
Officer Price Joseph  
Officer Dan Palicki  
Officer James Smith  
Det. John Tharp*

*Officer Allen Woods*

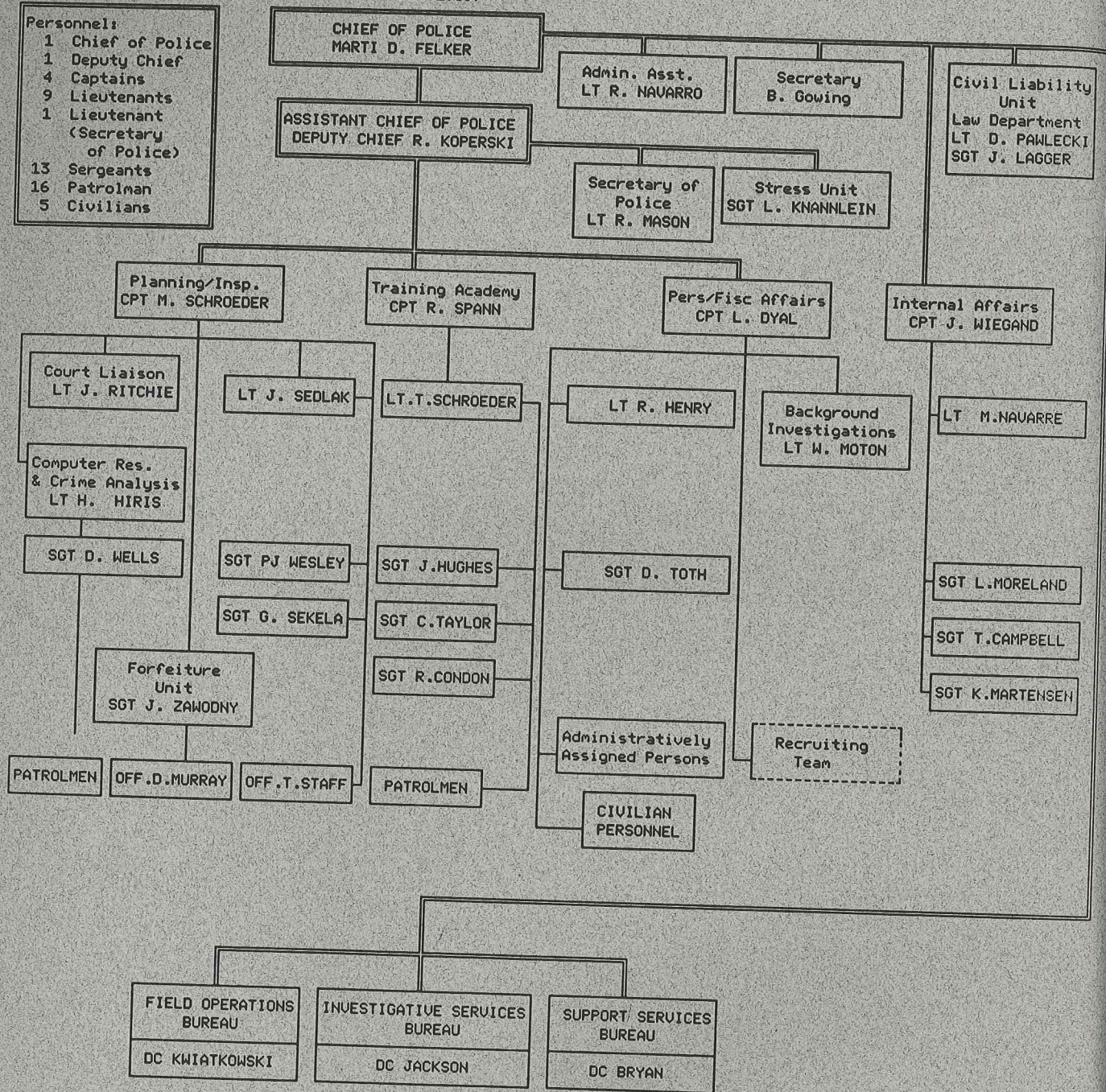


**POLICE ADMINISTRATION**



ADMINISTRATION  
(As of: DEC 1989)

- Personnel:  
 1 Chief of Police  
 1 Deputy Chief  
 4 Captains  
 9 Lieutenants  
 1 Lieutenant  
 (Secretary of Police)  
 13 Sergeants  
 16 Patrolman  
 5 Civilians





## ADMINISTRATIVE STAFF

### ADMINISTRATIVE ASSISTANT

The Administrative Assistant to the Chief of Police has many responsibilities in representing the Office of the Chief. He represents the Chief at meetings and meets with neighborhood groups regarding specific problems in the community. In addition, he screens and responds to citizen complaints and inquiries which are directed to the Chief's Office, as well as those emanating from other city agencies, the Mayor's Office, the City Manager's Office, individual councilmen. Other duties include functioning as the news media liaison officer, Chairman of the Awards and Safety Committees, and coordination of the outside employment (*off duty*) requests made by all sworn personnel.

### CIVIL LIABILITY INVESTIGATION UNIT

This Unit is the investigative arm of the Law Department; facilitating the adequate preparation of a complete and effective defense in civil cases filed against the City of Toledo. It provides the City with a means for an early and effective investigative involvement in tort liability matters, thus safeguarding and preserving information and evidence necessary in defending a lawsuit.

### PLANNING and INSPECTIONS SECTION

As its name implies, this Section has dual responsibilities. First, It endeavors to develop a planning process that anticipates problems and suggests solutions. The Unit develops and recommends plans aimed at improving police services in the furtherance of the Division's goals. Its personnel review policies and procedures to ascertain suitability, and, where weaknesses exist, devise methods of improvement, along with formalizing written policies to guide employees in the effective administration of the Division.

The second area of responsibility is that of conducting formal staff inspections to determine if Division policies, procedures, and rules are being adhered to by all Division members. It also provides for the evaluation of systems and resources to insure their utilization to maximum efficiency within the guidelines established by Division policy. When deviation are discovered, their causes are sought and recommendations for corrective action are made. A final aspect of the Section's responsibilities is that of serving as liaison between the Division and the Municipal and Common Pleas Courts to solve problems which arise. The Court Unit reviews all precipes to prevent duplication of testimony; attends pre-trials to assure that only the necessary officers are summoned; and, monitors the courtrooms to assist and supervise those officers appearing in court.



## **FORFEITURE UNIT**

The Unit's primary purpose is to institute civil forfeiture proceedings, in conjunction with the Lucas County Prosecutor's Office, against individuals who use or derive personal assets during the course of criminal conduct.

## **COMPUTER RESOURCES-CRIME ANALYSIS UNIT**

The Crime Analysis Unit provides the Division with a comprehensive computer analysis of Part I and Part II criminal offenses. By gathering, analyzing, storing, and disseminating information to patrol units, the appropriate police action can be taken to reduce or eliminate specific criminal activities in problem areas.

## **STRESS PROGRAM**

The Toledo Police Division's Stress Unit assists Division employees and other city employees, as well as their family members, in resolving or attempting to resolve alcohol, emotional, marital, or other problems that may be contributing to or causing declining employee job performance. In assessing problem situations with a client, the Stress Officer appropriately refers the individual to a suitable community resource for treatment. The Stress Officer also carefully screens, becomes familiar with, and maintains a working relationship with people working in many diverse community treatment programs in order to be able to make referrals. The Unit is also responsible for developing training programs for the same target population, aimed at such areas as life style management, stress management, marriage strengthening, alcoholism, and others.

## **INTERNAL AFFAIRS UNIT**

The Internal Affairs Unit investigates, coordinates and/or exercises staff supervision on behalf of the Chief of Police with respect to complaints against, or allegations of misconduct against Division members. It has the responsibility of presenting all evidence obtained during such investigations, particularly when disciplinary hearings result from the investigations.

## **PERSONNEL and FISCAL AFFAIRS SECTION**

This Section prepares and administers the Division's budget, as well as controlling and coordinating the purchasing of all equipment and supplies for the Division. It is responsible for the payroll function, personnel record keeping, affirmative action data, equal employment opportunity plans, and maintaining the Police Time Bank. It assists in the labor relations function, including contract negotiations, grievance response, grievance settlement, and arbitration. In addition, It is responsible for the recruitment and background investigation of new personnel.



## TRAINING SECTION

The Training Section manages and maintains the Division's training facilities and equipment, as well as all training records and files. It has the responsibility to research, develop, coordinate, and produce skills and career development training programs for all levels of Division Personnel. It serves as the liaison between the Division and the Ohio Peace Officer's Training Council. The Training Section functions as the Division's focal point for the training of newly sworn personnel.

## BACKGROUND INVESTIGATIONS

The Background Investigation Unit is charged with the responsibility of investigating the character and aspects of the personal background police applicants. The background investigation process, which includes both medical and psychological examinations, delves into an applicants criminal and traffic history, military and credit history, previous employer records, neighbor interviews, and reference records. The Toledo Police Division's background investigation process has been described as one of the most thorough in the State of Ohio.

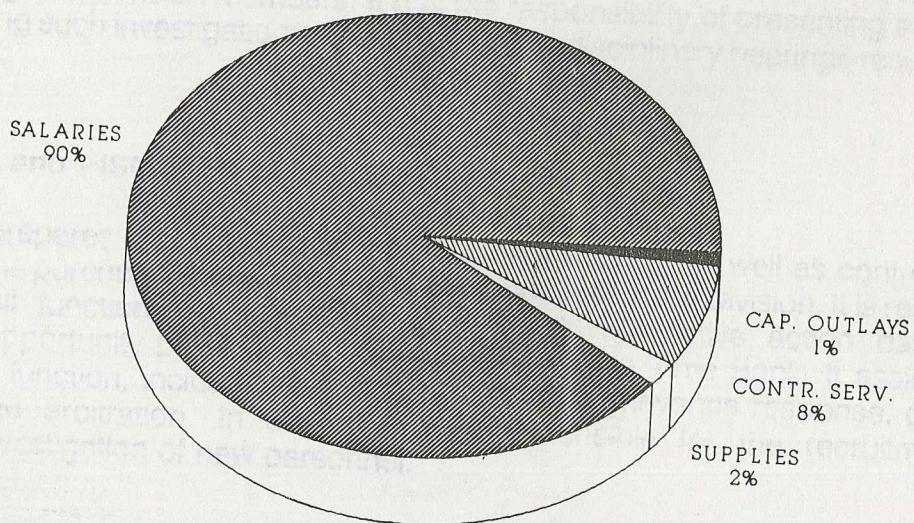




# 1989 BUDGET SUMMARY

BUDGET CATEGORY	1989	1988
Salaries and Personnel Services	\$39,159,180	\$37,213,880
Supplies	795,270	943,353
Contractual Services	3,339,330	3,707,974
Capitol Outlays	450,000	466,378
Total	\$43,803,780	\$42,331,585

## 1989 BUDGET CATEGORY PERCENT OF BUDGET





## INTERNAL AFFAIRS SECTION

Complaint Source	1989	1988	% Change
Division Initiated	354	197	79.7%
Citizen Initiated	204	203	0.5%
<b>Division Investigations</b>			
Internal Affairs Unit	149	179	-16.7%
By other Command Officers	409	221	85.1%
Total	558	400	39.5%
<b>Disciplinary Action Taken</b>			
Verbal Reprimands	137	156	-12.2%
Written Reprimands	69	68	1.5%
Suspensions	28	50	-44.0%
Dismissals	1	0	100%
Total	235	274	-14.2%



## DIVISION PROFILE

### MANPOWER DISTRIBUTION BY RACE-GENDER-RANK As of December 31, 1989

	Chief	Dp Chief	Cpt.	Lt.	Sgt.	Ptlm.	Total	% D
WM	1	3	16	31	78	370	499	71
WF				1	6	51	58	8
BM		1		3	13	66	83	12
BF				1		33	34	5
HM				1	3	20	24	3
HF					1	3	4	1
IM						1	1	0
IF							0	0
<b>TOTAL</b>	<b>1</b>	<b>4</b>	<b>16</b>	<b>37</b>	<b>101</b>	<b>544</b>	<b>703</b>	<b>100</b>
<b>% DIV.</b>	<b>0%</b>	<b>1%</b>	<b>2%</b>	<b>5%</b>	<b>14%</b>	<b>77%</b>	<b>100%</b>	

### AVERAGE AGE - YEARS OF SERVICE - YEARS IN RANK - AGE AT APPOINTMENT

	Age	Years of Service	Years in Rank	Appointment Age
Division	40	14	-	26
Chief	45	22	2	23
Deputy Chief	52	25	6	26
Captain	48	22	7	25
Lieutenant	44	20	6	24
Sergeant	42	17	7	25
Patrol Officer	39	12	12	27

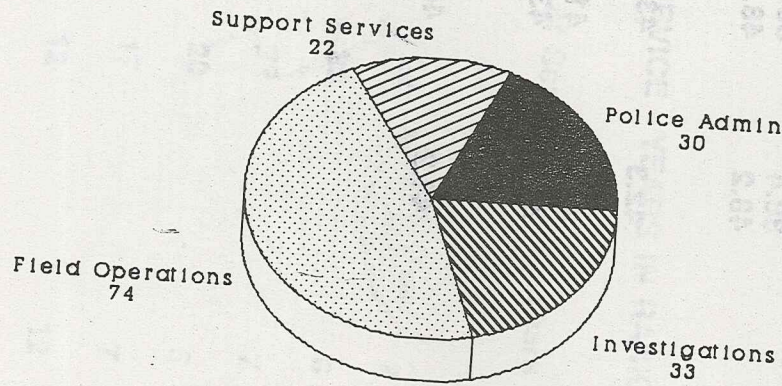


## AGE - LENGTH OF SERVICE BY SECTION

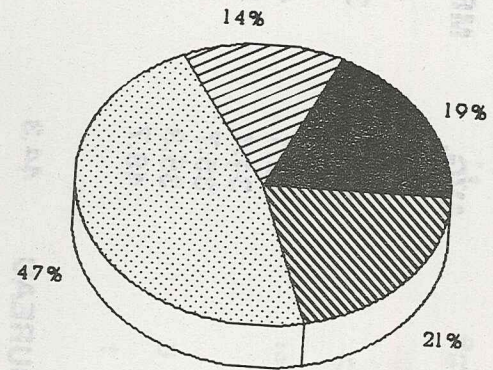
	AGE		LENGTH OF SERVICE	
	AVG.	MEDIAN	AVG.	MEDIAN
<b>FIELD OPERATIONS BUREAU</b>	<b>37.6</b>	<b>36.0</b>	<b>11.0</b>	<b>6.3</b>
Day Shift	42.1	44.2	16.4	18.3
Afternoon Shift	34.1	34.0	6.8	5.3
8pm - 4am Shift	35.7	34.1	9.0	6.3
Night Shift	35.3	34.1	8.4	6.3
Traffic Section	48.7	49.5	23.7	24.8
<b>INVESTIGATIVE SERVICES BUREAU</b>	<b>44.3</b>	<b>45.2</b>	<b>18.9</b>	<b>21.1</b>
Crimes Against Persons	44.3	45.2	19.4	19.5
Crimes Against Property	46.6	46.6	21.3	22.3
Vice/Metro	38.4	38.1	12.9	12.3
Youth Services	48.2	48.0	22.1	23.0
<b>SUPPORT SERVICES BUREAU</b>	<b>42.3</b>	<b>43.0</b>	<b>16.2</b>	<b>17.2</b>
Communications Section	40.3	41.2	13.8	15.1
Records Section	43.0	43.0	16.6	19.5
<b>POLICE ADMINISTRATION</b>	<b>44.2</b>	<b>44.7</b>	<b>18.5</b>	<b>20.5</b>



# Command Officer Distribution By Bureau



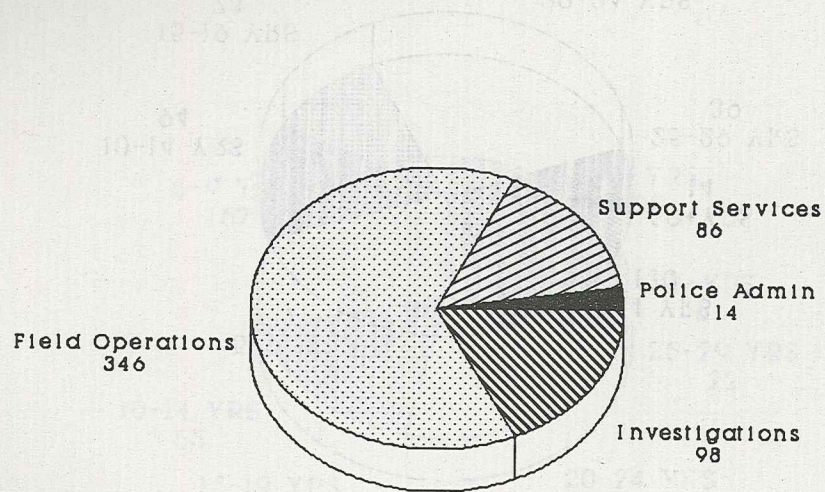
Number



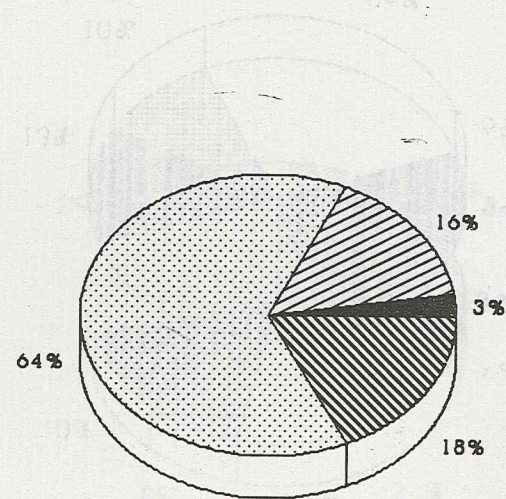
Percent



# Patrol Officer Distribution By Bureau



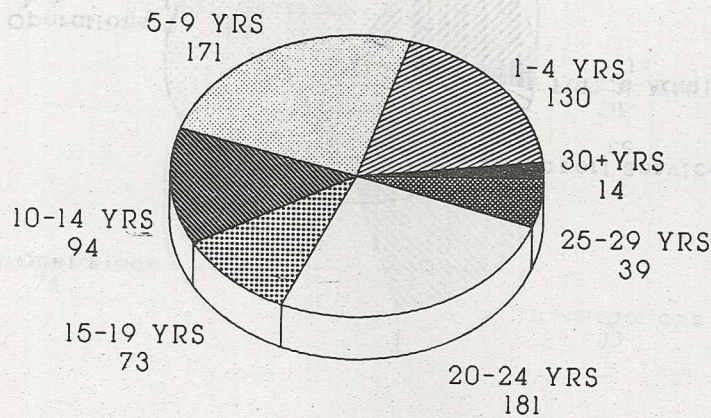
Number



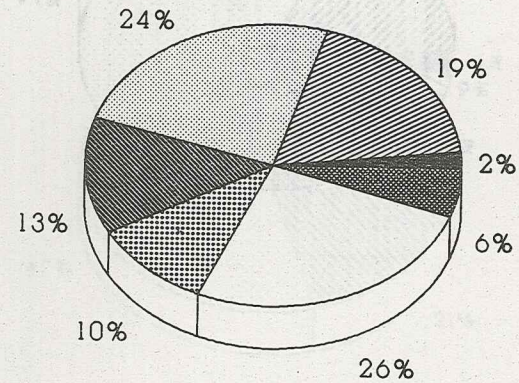
Percent



# YEARS OF SERVICE CATEGORIES TOTAL DIVISION PERSONNEL



NUMBER

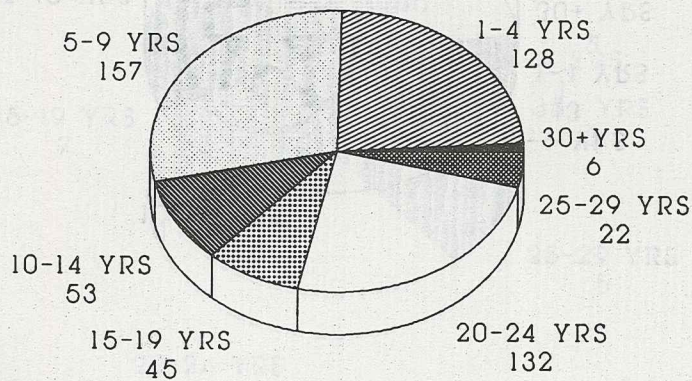


PERCENT

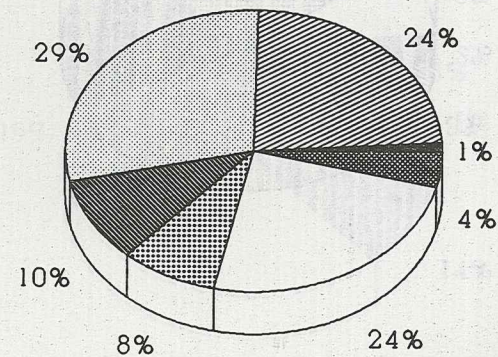
AS OF FEBRUARY 1990



# YEARS OF SERVICE CATEGORIES PATROL OFFICERS



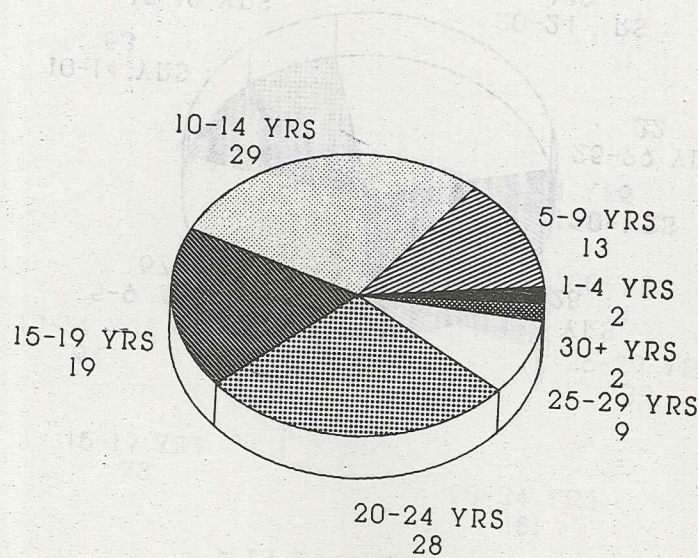
NUMBER



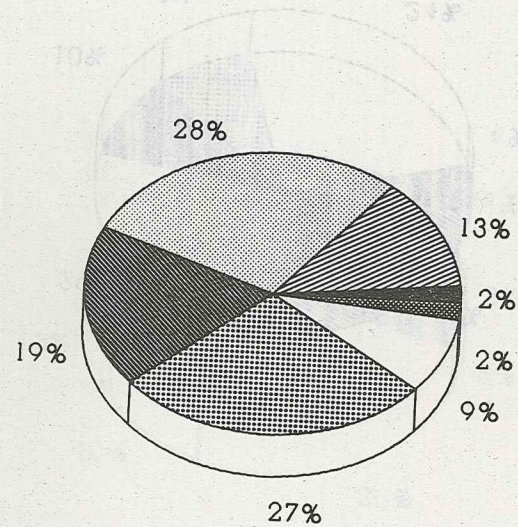
PERCENT



# YEARS OF SERVICE CATEGORIES SERGEANTS



NUMBER

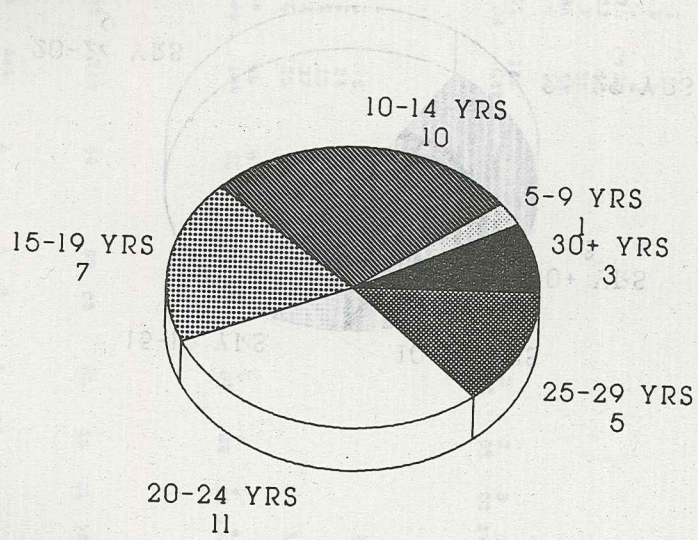


PERCENT

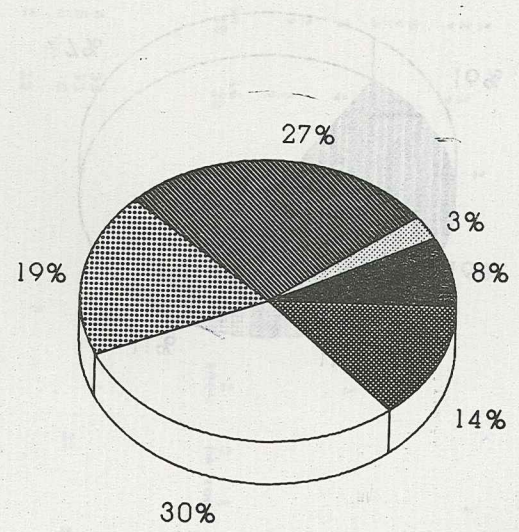
AS OF FEBRUARY 1990



# YEARS OF SERVICE CATEGORIES LIEUTENANTS



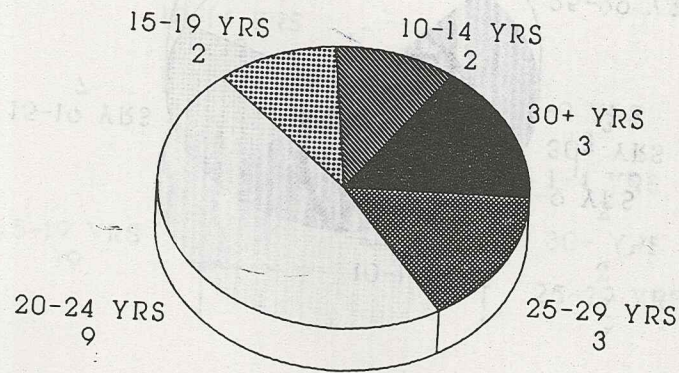
NUMBER



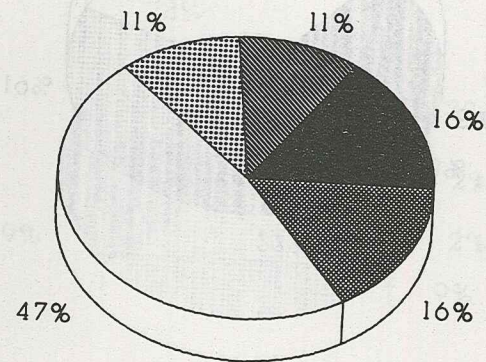
PERCENT



# YEARS OF SERVICE CATEGORIES CAPTAINS and DEPUTY CHIEFS



NUMBER



PERCENT

AS OF FEBRUARY 1990

PER DIST  
\*\*\*\*\*  
ADMIN  
Division Assistant  
Admin/Plan/Perz/Field  
Planning  
Court Internal  
CIVIL Internal  
Crime An  
computer  
training  
Background  
Sergeants  
Assign/Adv  
Sgt at A  
Bureau  
of Swo  
SUPPORT  
Bureau C  
Communica  
Records  
Property  
Forensic  
Community  
Bureau  
of Swo  
FIELD OPER  
Bureau C  
Admin/Str  
Mounted B  
Harbor Pa  
Patrol SH  
Patrol SH  
Patrol SH  
Traffic S  
Bureau  
of Swo  
INVESTIGA  
Bureau C  
Admin/Str  
SPI Invest  
Crimes /  
Youth Ser  
Vice/Metr  
Bureau  
of Swo  
TOTAL  
\* each ra  
is of t  
Division  
Number  
rank/p  
in the co



SWORN PERSONNEL

CIVILIAN PERSONNEL

PERSONNEL DISTRIBUTION CHART

PERSONNEL DISTRIBUTION CHART	C H I E F	D E P U T Y	C A P T A I N	L I E U T E N A N T	S E R G E A N T	P O P T R I C L E R	S O P C R E O L A R C Y	F L O R E N D S M I C H	C R I M I N A L I S T	S A N S T A T I S T	C D L E T R A C N T R L	S T E N O	C L E R K	S E C R E T A R Y	V S E R V I C L W K R	T R A D E	C A S H I E R	T O T A L O N S W O R N	T C I V I L I A N S
------------------------------	-----------	-------------	---------------	---------------------	-----------------	---------------------	-------------------------	-------------------------	-----------------------	---------------------	-------------------------	-----------	-----------	-------------------	-----------------------	-----------	---------------	-------------------------	---------------------

POLICE ADMINISTRATION

Division Commander	1													1				1	1
Assistant Chief		1																1	0
Administrative Ass't				1										1				1	0
Pers/Fiscal Affairs			1	1			1					1	2					4	3
Planning/Inspections			1	1		2												1	0
Forfeiture Unit					1		1											5	0
Court Liaison				1														2	0
Internal Affairs			1	1		3												1	0
Civil Liability Unit				1		1												5	0
Crime Analysis					1			4										2	0
Computer Resources				1						1								5	0
Training/Recruitment			1	1		3		4										1	1
Background Invest.				1														9	0
Stress Officer					1													1	0
Assgn/Admin Purposes						1		3										1	0
Sgt at Arms/Council						1		1										4	0
Bureau Total	1	1	4	9	14	14	1	0	0	1	0	1	2	1	0	0	0	44	5
% of Sworn/Civ. Pers	0%	0%	1%	2%	3%	3%	0%	0%	0%	100%	0%	100%	8%	100%	0%	0%	0%	44%	5%

SUPPORT SERVICES BUREAU

Bureau Commander	1																	1	0
Communications			1	1	6	35												43	0
Records Section			1	1	5	33					14		14					40	28
Property Management			1		2	6									2			9	2
Forensic Laboratory								1	3									0	4
Community Affairs			0	1	2	12												15	0
Bureau Total	0	1	3	3	15	86	0	1	3	0	14	0	14	0	2	0	0	108	34
% of Sworn/Civ. Pers	0%	0%	1%	1%	3%	16%	0%	100%	100%	0%	100%	0%	58%	0%	100%	0%	0%	15%	6%

FIELD OPERATIONS BUREAU

Bureau Commander	1																	1	0
Administrative Staff				1	1													2	0
Mounted Patrol					2	8												10	0
Harbor Patrol					1	6												7	0
Patrol Shift 4 - 7x3		1	5	11		90												107	0
Patrol Shift 5/3x11		1	5	13		95												114	0
Patrol Shift 8/spk4a		1	1	7		53												62	0
Patrol Shift 6/11x7		1	5	12		82												100	0
Traffic Section				1	4	12							4				6	1	17
Bureau Total	0	1	4	18	51	346	0	0	0	0	0	4	0	0	0	6	1	420	11
% of Sworn/Civ. Pers	0%	0%	1%	3%	9%	64%	0%	0%	0%	0%	0%	17%	0%	0%	0%	100%	100%	60%	20%

INVESTIGATIVE SERVICES BUREAU

Bureau Commander	1																	1	0
Administrative Staff				1	1								3					2	3
Spl Investigations					1	4												5	0
Crimes / Persons			1	2	7	24												34	0
Crimes / Property			1	1	5	18												25	0
Youth Services			1	1	2	27							1					31	1
Vice/Metro			1	1	6	25												33	0
Bureau Total	0	1	4	6	22	98	0	0	0	0	0	4	0	0	0	0	0	131	4
% of Sworn/Civ. Pers	0%	0%	1%	1%	4%	18%	0%	0%	0%	0%	0%	17%	0%	0%	0%	0%	0%	19%	7%

TOTAL DIVISION

% each rank/position is of the total Division personnel	0%	1%	2%	5%	13%	72%	0%	0%	0%	2%	0%	3%	0%	0%	1%	0%	0%	93%	7%
Number of each rank/position in the total Division	1	4	15	36	102	544	1	1	3	1	14	1	24	1	2	6	1	703	54

AS OF FEBRUARY 1990

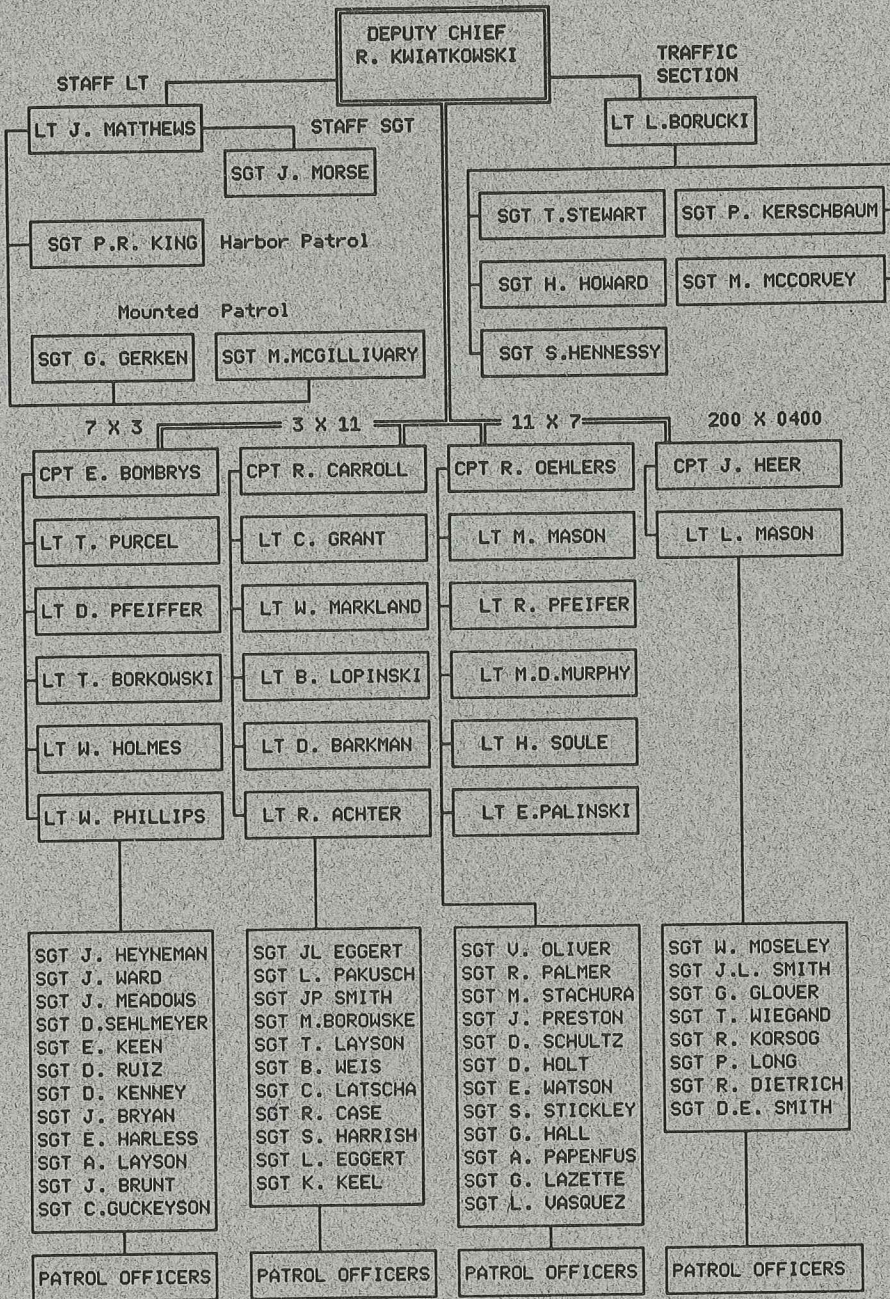


**FIELD OPERATIONS  
BUREAU**



**FIELD OPERATIONS BUREAU**  
( As of: DEC 1989 )

<b>Personnel:</b>	
Deputy Chief-	1
Captain	- 4
Lieutenant	- 18
Sergeant	- 50
<b>Patrolmen:</b>	
Harbor Ptrl=	6
Mount Ptrl=	8
Traffic	= 13
(7x3)	= 90
(3x11)	= 96
(11x7)	= 85
(2000x0400)=	53
Civilians	= 12





## **FIELD OPERATIONS BUREAU**

### **PATROL SHIFTS**

The uniformed patrol shifts are the nucleus of the Police Division. Through the assignment of four (4) shifts, officers respond to all appropriate calls for service originated by the public; both crime related and service related. This Section demands the greatest amount of personnel and the greatest amount of Division resources. More than fifty percent of all personnel within the Division are assigned to this extremely important function.

### **ADMINISTRATIVE STAFF**

The Administrative Staff of the Field Operations Bureau performs all of the administrative functions associated with maintaining the Division's largest Bureau. Included within these responsibilities are: maintenance of assignment sheets, uniform clothes accounting, clothing purchasing authorization, equipment inspection, and many others.

### **HARBOR PATROL**

The Harbor Patrol Unit patrols all navigable waters within the jurisdiction of the City of Toledo. It performs such duties as are necessary for maintaining the safety of all persons and property in and along these waterways. The Unit coordinates and assists with search and rescue missions for lost or stranded persons on the waterways, as well as towing disabled water craft and removing hazards from the water when necessary. Other duties include: accident reporting, boat inspections, and assisting the Coast Guard, as well as other agencies, upon request. When the Harbor Patrol Team is not in the waters, members can be seen at area boat shows, seminars and various other places, informing the public as to the safe operation of watercraft.

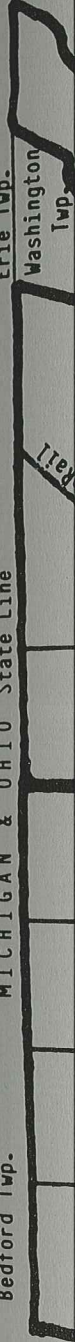
### **TRAFFIC SECTION**

The Traffic Section is the main repository of records for all traffic accidents and violations occurring in the City. It administers the School Crossing Guard program, parking meter enforcement and collection, the inspection of all Toledo taxi cabs, and the inspection of tow trucks. In order to keep the streets clear of junk autos, the Traffic Section also has the responsibility of enforcing ordinances related to junk and abandoned autos. It serves a support function for the Division by providing forms and data to be used in an on-going traffic enforcement - accident reduction program.

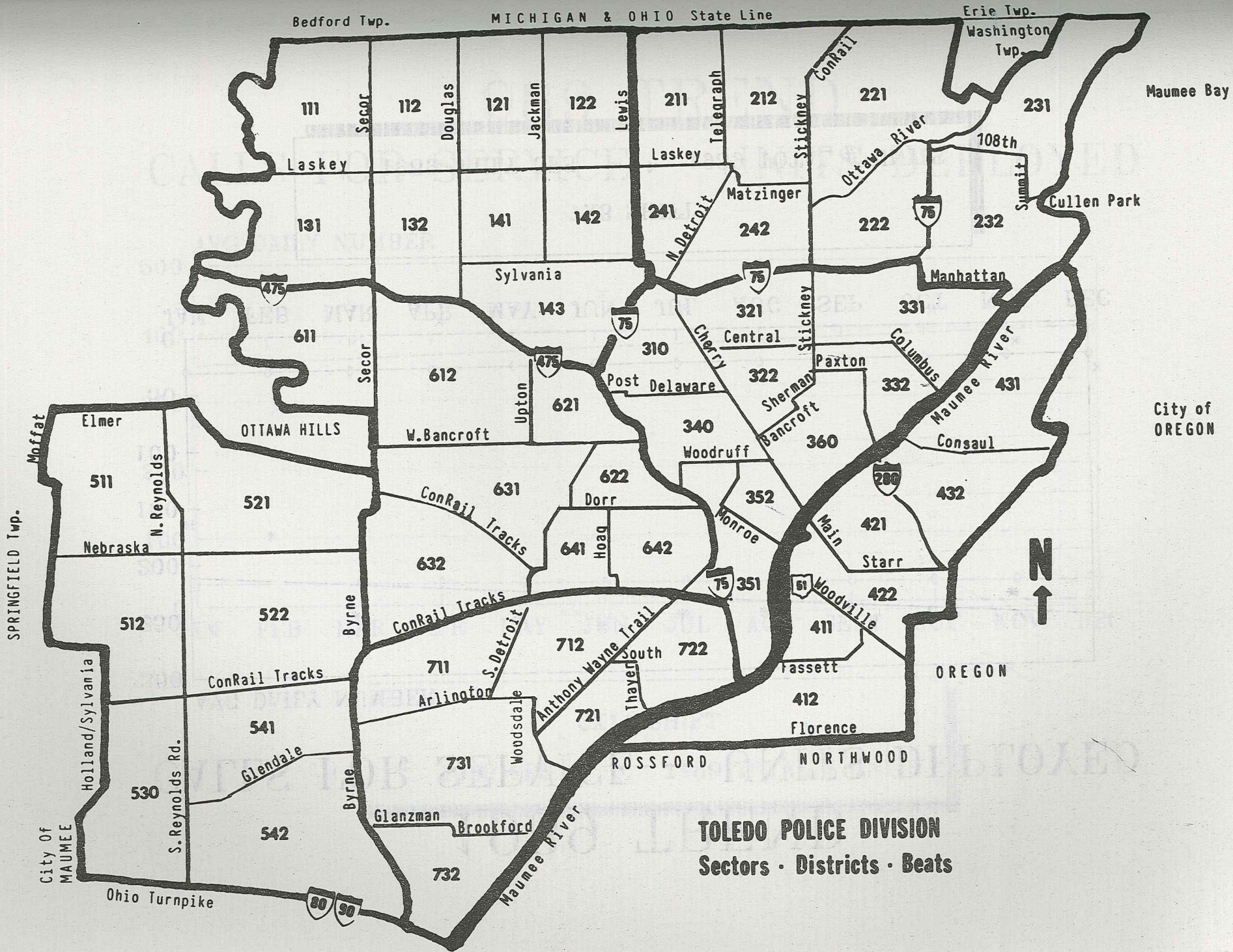


## MOUNTED PATROL UNIT - ESTABLISHED 1985

The Mounted Patrol Unit patrols the various high volume business districts and the major parks of the City on as-needed basis. Its primary functions is patrolling in those areas where high visibility is required for deterrence, and where maneuverability is necessary to move through large crowds and heavy vehicular traffic. Its duties include traffic control and enforcement, nuisance and crime prevention, crowd control, search and rescue, and other activities which are better handled on horseback. The Unit also visits schools and assists at various community events.





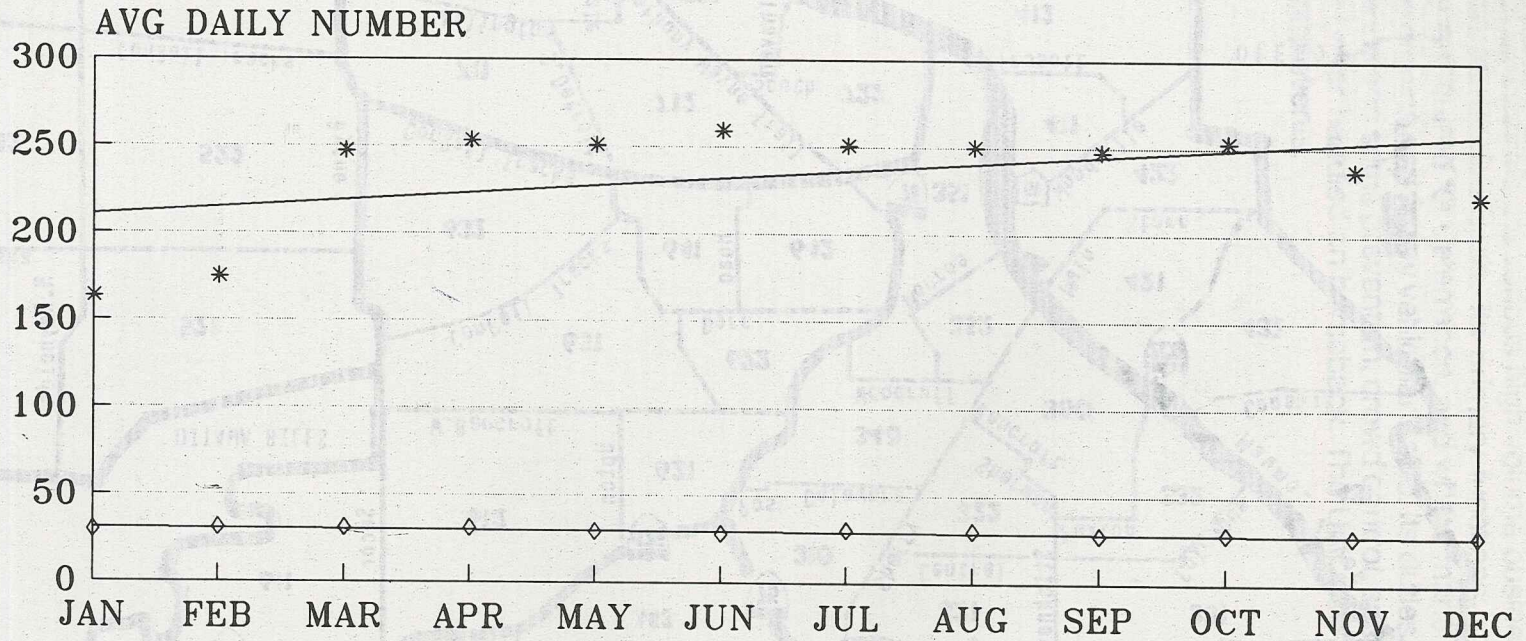


**TOLEDO POLICE DIVISION**  
**Sectors · Districts · Beats**



# 1989 TREND

## CALLS FOR SERVICE - UNITS DEPLOYED



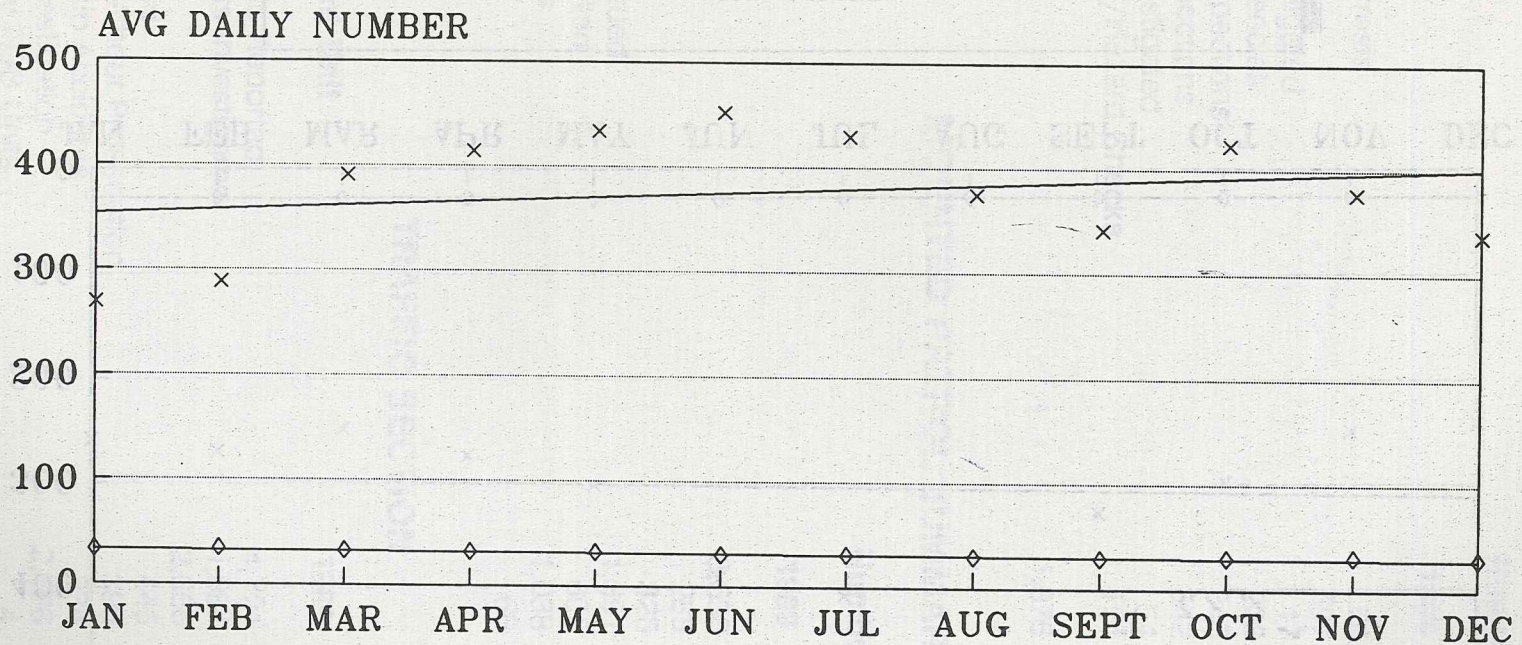
7X3 SHIFT

\* 1989 DAILY CFS      ◇ 1989 TOTAL # UNITS



# 1989 TREND

## CALLS FOR SERVICE - UNITS DEPLOYED



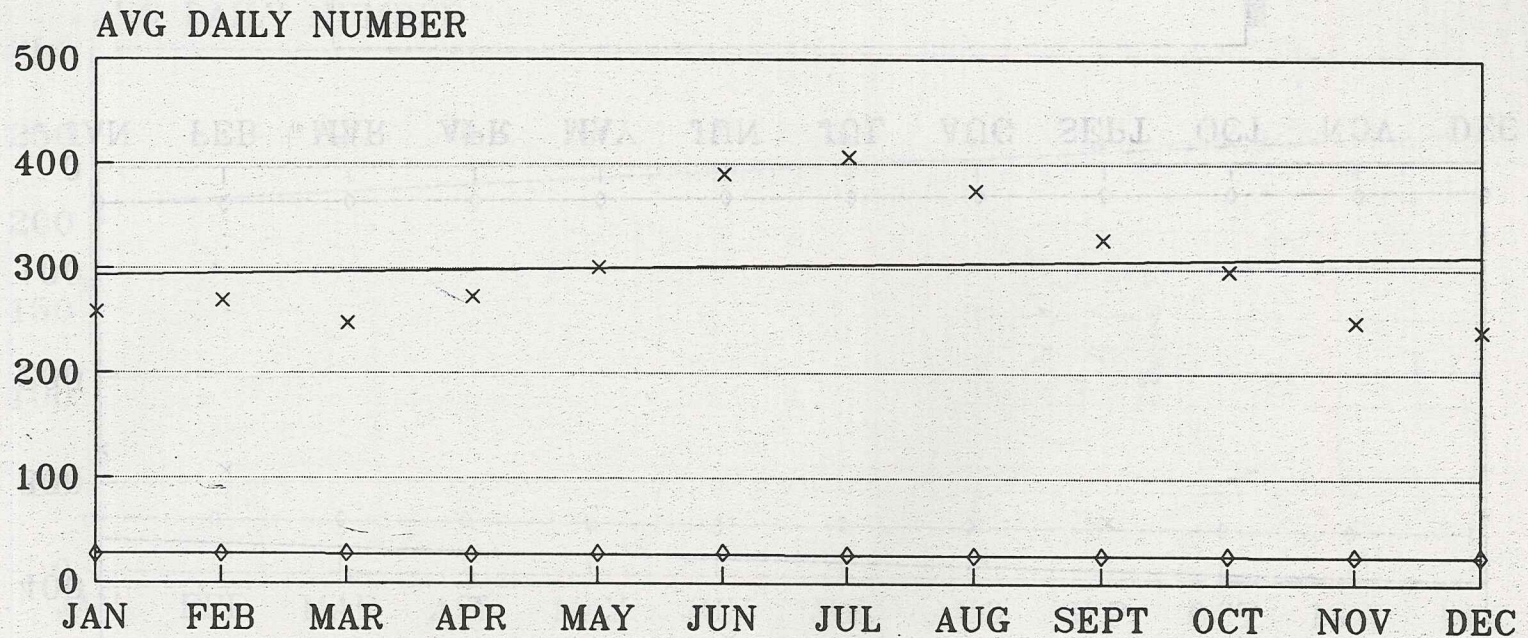
**3X11 SHIFT**

—x— 1989 CFS
—◇— 1989 TOTAL # UNITS



# 1989 TREND

## CALLS FOR SERVICE - UNITS DEPLOYED



11X7 SHIFT

—x— 1989 DAILY CFS      —◇— 1989 TOTAL # UNITS



## HARBOR PATROL SUMMARY

Activity	Number of Contacts	
	1989	1988
Citations and Arrests	64	45
Warnings	507	267
Accidents Investigated	17	12
Assist Other Agencies	223	193
Written Boat Inspections	345	110
Visual Boat Inspections	542	355
Complaints Investigated	54	86
Navigational Aid/Hazard Checks	124	66
<b>Total Contacts</b>	<b>1,876</b>	<b>1,134</b>

## MOUNTED PATROL SUMMARY

Activity	Number of Contacts	
	1989	1988
Calls for Service	3,536	2,243
Arrests	265	139
Traffic Citations	325	389
Parking Tags Issued	1,691	1,878
Crime Reports Filed	602	425
Vehicle Lockouts	1,038	516
Special Events	66	70

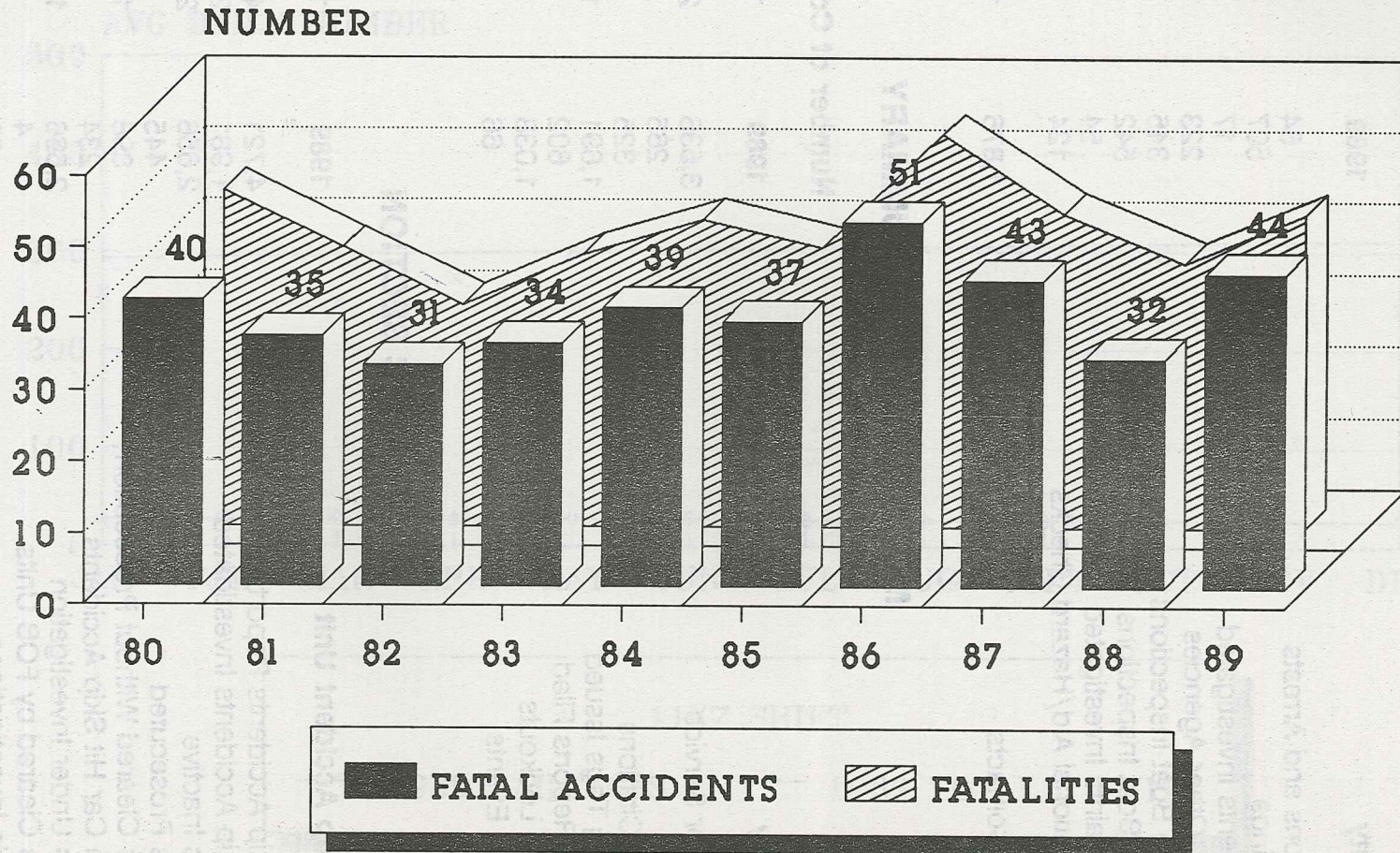
## TRAFFIC SECTION

Hit Skip Accident Unit	1989	1988
Hit Skip Accidents Reported	4,721	4,990
Hit Skip Accidents Investigated	1,981	2,183
Cases Inactive	2,656	2,788
Cases Prosecuted	445	516
Cases Cleared Without Prosecution	898	1,208
Stolen Car Hit Skip Accidents	234	144
Cases Under Investigation	2,566	1,445
Cases Cleared by FOB Units	4	5
Outside Investigations	153	222



# 1980-1989

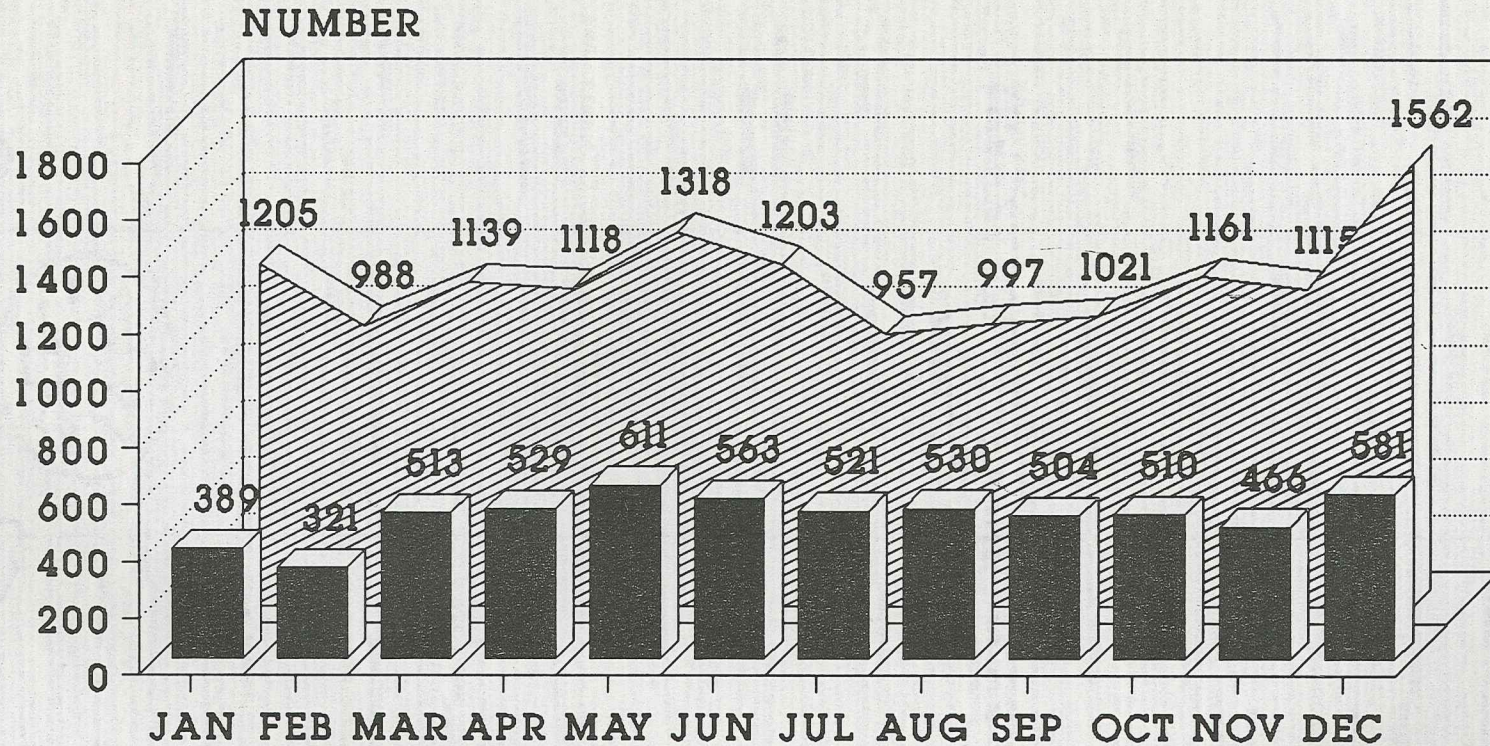
## FATAL TRAFFIC ACCIDENTS





# 1989 TRAFFIC ACCIDENTS

## INJURY AND PROPERTY DAMAGE



INJURY
  PROPERTY DAMAGE

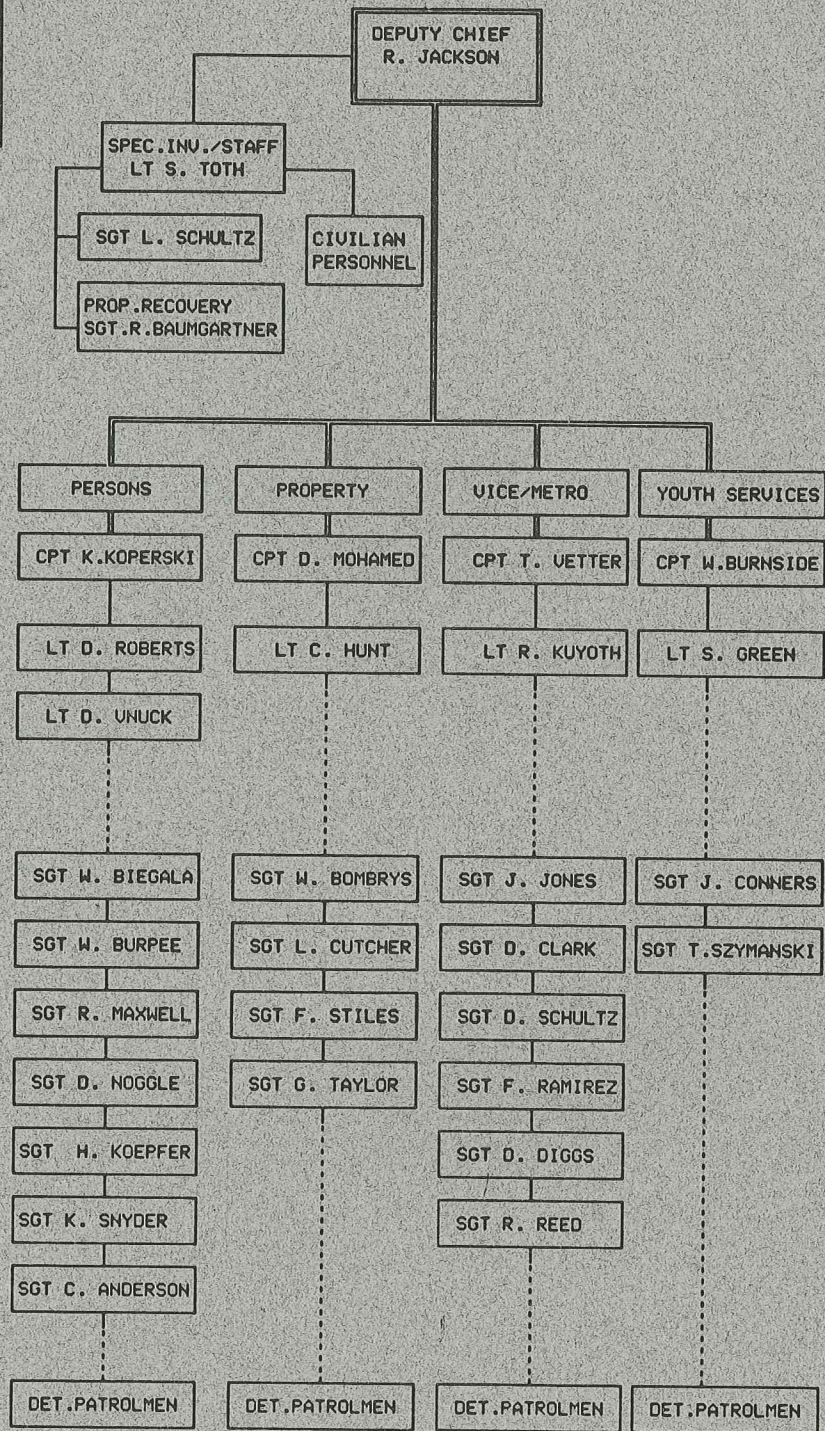


**INVESTIGATIVE SERVICES  
BUREAU**



Personnel:  
 Deputy Chief - 1  
 Captain - 4  
 Lieutenants - 6  
 Sergeants - 21  
 Patrolmen - 98  
 Civilians - 4

INVESTIGATIVE SERVICES BUREAU  
 (As of: DEC 1989)





# INVESTIGATIVE SERVICES BUREAU

## ADMINISTRATIVE STAFF

The Administrative Staff of the Investigative Services Bureau has the responsibility of maintaining personnel time sheets, sick leave, vacation and all other records pertaining to the Bureau's personnel. It coordinates all roll call training; supervises the civilian desk technicians; provides a court officer for all felony arraignments; coordinates case information with the Lucas County Prosecutor's Office and Grand Jury; and ensures the service of subpoenas on Bureau personnel. In addition, it coordinates the highly successful Crime Stopper Program.

## PROPERTY RECOVERY UNIT

The Property Recovery Unit monitors all of the local pawnshops, junk yards, and gold/silver shops. This Unit operates undercover STING operations, as well as investigating stolen and recovered property cases.



## CRIME STOPPER PROGRAM

Crime Class	Cases Logged	Cases Solved	Arrests	Indictments
Robbery	54	15	4	2
Homicide	65	4	2	2
Burglary	87	20	5	0
Auto Theft	70	8	9	5
Theft	68	8	9	3
Arson	22	1	0	0
Drugs	762	59	39	23
Rape	5	0	0	0
Hit-Skip	14	1	0	0
Weapons	7	0	0	0
Escape	3	2	2	1
Receiving	32	5	10	5
Liquor	3	0	0	0
Warrants	118	58	38	0
Forgery	3	0	0	0
Gambling	1	0	0	0
Fraud	29	0	0	0
Assault	27	2	3	3
Vandalism	7	2	0	0
Miscellaneous	64	7	6	0
255-DRUG	254	0	0	0
<b>Total</b>	<b>1,695</b>	<b>192</b>	<b>127</b>	<b>44</b>

### SUMMARY

During 1989, the Crime Stopper Program received a total of 1,695 calls which resulted in 127 arrests, 192 cases being solved, and 44 individuals being indicted.

In 1989, a total of \$24,850.00 in reward money was granted to persons who provided information to the Crime Stopper Program

The Crime Stopper Program received 762 drug related calls in 1989, of which 254 were received on the 255-DRUG line.



## **CRIMES AGAINST PERSONS SECTION**

### **ROBBERY UNIT**

This Unit investigates all commercial, street and financial institution robberies. Suspect auto and suspect photo files are kept to maintain current and past robbery events records in the event of similar offenses occurring. The Robbery Unit also correlates all information regarding suspects and possible locations for stake-outs with the uniformed units with the intention of on scene apprehension. Unit members are called upon to conduct line-ups, photo identifications, and one-on-one street identifications.

### **HOMICIDE UNIT**

The Homicide Unit has a wide range of investigative responsibilities, from the investigation of purposeful deaths caused by violent means, to simple assault investigations. Its members work in close relationship with the Lucas County Coroner and his investigators. Additional investigative responsibilities include unattended death situations, felonious assaults, aggravated assaults, kidnapping, abduction, and weapons offenses.

### **PERSONAL ASSAULT UNIT**

This Unit investigates all sex related crimes, including sexual child abuse, and telephone harassment complaints. Its members attempt to recognize and evaluate series of similar sex related crimes in order to forward the information to the appropriate street patrol units. An on-going program is that of working with the Child Sexual Abuse Team at the Medical College of Ohio, in order to improve procedures related to the treatment of both victim and offenders. The Unit works actively with members of Toledo United Against Rape in training programs.

### **SCIENTIFIC INVESTIGATION UNIT**

The Scientific Investigation Unit visits all major crime scenes with the task of sketching the scene, photographing it, as well as searching for and lifting fingerprints when found. Its members collect and preserve all physical evidence for future analysis and/or court presentations. In addition, its members attend autopsies when required and record the findings of the forensic pathologists, as well as collecting any evidence obtained as a result of the autopsy.



## CRIMES AGAINST PERSONS SECTION

ROBBERY/HOMICIDE UNIT	1989	1988	% Change
Complaints received	20,217	17,954	12.6%
homicides	42	28	50.0%
commercial robberies	311	303	2.6%
street robberies	1,079	834	29.4%
purse snatches	215	314	- 31.5%
financial institutions	11	18	- 38.9%
other felonies	730	615	18.7%
domestic violence	6,767	6,828	- 0.9%
other misdemeanors	16312	14046	16.1%
Complaints assigned	3254	4016	- 19.0%
Arrests	3781	3643	3.8%
Inactive cases	2115	1600	32.2%
Unfounded complaints	28	37	-24.3%
Exceptionally cleared complaints	14821	12855	15.3%

### PERSONAL ASSAULT UNIT

Complaints received	2016	1915	5.3%
felonies	773	587	31.7%
misdemeanors	1243	1328	-6.4%
rapes	354	305	16.1%
attempted rapes	45	38	18.4%
Complaints assigned	585	714	-18.1%
Arrests	292	294	-0.7%
Inactive	492	595	-17.3%
Unfounded complaints	41	66	-37.9%
Exceptionally cleared complaints	441	415	6.3%

### SCIENTIFIC INVESTIGATION UNIT

Crime scene assignments			
latent fingerprint search	547	886	-27.0%
latent fingerprint lifts	345	490	-29.6%
photography assignments	655	720	-9.0%
NAA tests	73	55	32.7%
crime scene sketches	17	18	-5.6%
moulage casts	13	12	8.3%
Other Assignments			
fingerprint comparisons	495	537	-7.8%
autopsies attended	77	66	16.7%
polygraphis administered	96	88	9.1%



## **CRIMES AGAINST PROPERTY SECTION**

### **AUTO THEFT UNIT**

The primary role of this Unit is to investigate all phases of auto theft and recoveries in an attempt to establish the pertinent information which will lead to the successful arrest and prosecution of the perpetrator. This Unit accomplishes this by maintaining files of stolen and recovered vehicles and by working actively with the uniformed patrol units, and adjacent police agencies in their vehicle investigations. By maintaining close working relationship with the various title officers and the Bureau of Motor Vehicles in Columbus, members of the Unit attempt to identify professional motor vehicle theft rings, as well as the routine teenage joyrider. In addition, the Unit is concerned with the theft prevention and investigation of heavy industrial equipment and marine type equipment offenses, as well as the investigation of altered, concealed, or obliterated vehicle identification numbers, and vehicle arson.

### **BURGLARY UNIT**

The Burglary Unit investigates all residential and commercial break-ins that are reported to the Police Division. These investigations include the development of profiles of burglary suspects by examining crime scenes, interpreting physical evidence, interrogating suspects and interviewing witnesses. In order to link suspects and stolen items to the particular offense, the Burglary Unit provides constant communication with property recovery personnel. Information is collected and then disseminated to the patrol operations in order to advise them on particular burglary patterns. Citizen cooperation is solicited by presenting programs to the community illustrating a realistic picture of the burglary problem, and explaining the role of the responding officers, as well as the investigator assigned to the case.

### **CHECK UNIT**

This Unit provides a complete investigative service pertaining to crimes of forgery and passing bad checks. It maintains files on active and inactive offenders of these types of crime and of stolen checks, as well as check writing machines. One of its primary roles is that of liaison with area banks and commercial lending institutions in disseminating information to assist in apprehending persons involved in forgery and the cashing of bad checks.

### **THEFT UNIT**

The Theft Unit processes and investigates miscellaneous crime such as theft, credit card offenses, vandalism, and extortion. It has the responsibility of serving arrests warrants issued in other jurisdiction, when the person sought is in Toledo.



## CRIMES AGAINST PROPERTY SECTION

AUTO UNIT	1989	1988	% Change
Complaints received	6499	4777	36.0%
complaints investigated	3279	2324	41.1%
stolen autos	3733	2800	33.3%
recovered autos	3270	2378	37.5%
arrests *	697	455	53.2%
unfounded complaints	197	469	- 58.0%
exceptionally cleared	1182	331	257.1%

\* Includes unauthorized use of motor vehicles, auto theft, title violations, etc.

### BURGLARY UNIT

Complaints received	7359	7739	-4.9%
residential burglaries	4704	4856	-3.1%
commercial burglaries	1432	1421	0.8%
complaints investigated	5338	5564	-4.1%
arrests	511	609	-16.1%
complaints reduced	779	741	5.1%
unfounded complaints	33	130	-74.6%
exceptionally cleared	308	447	-31.1%

### CHECK UNIT

Complaints received	5847	5373	8.8%
misdemeanor complaints	4366	3852	13.3%
felony complaints	1138	1215	-6.3%
Felony arrests	869	744	16.8%
Exceptionally cleared	306	410	-25.4%

### THEFT UNIT

Complaints received	24,070	22,833	5.4%
Complaints investigated	2,009	2114	-5.0%
Arrests	3,701	3,057	21.1%
Warrants pending	4,695	4728	-0.7%
Unfounded complaints	30	71	-57.7%
Exceptionally cleared	4350	4522	-3.8%

\* **UNFOUNDED COMPLAINTS** — A complaint is "unfounded" if the investigation determines that no offense occurred, nor was attempted.

\*\* **EXCEPTIONALLY CLEARED COMPLAINTS** — A complaint is "exceptionally cleared" when an offense has occurred and the identity of the suspect or offender has been established, but for certain reasons the offender will not be prosecuted.



**VICE-METRO SECTION  
YOUTH SERVICES SECTION  
MISSING PERSONS UNIT**

**VICE-METRO SECTION**

The Vice-Metro Unit enforces all laws and regulations which are aimed at reducing or eliminating those activities related to drug trafficking, prostitution, gambling and liquor violations. Section members review all applications for arcades, bars, phrenologists, message parlors, and dance halls. Within this area of responsibility, investigators conduct inspections of these types of businesses and perform background investigations of those persons operating the same. This Section is also called upon frequently to engage in educational programs dealing with drugs and gambling laws. Section members present community awareness programs to schools, churches, and other groups upon request.

**YOUTH SERVICES SECTION**

This Section has the extremely important responsibility of investigating crimes which are committed by or perpetrated against juveniles, with the exception of murder and felony sex offenses. The Section also has the responsibility for investigating child abuse cases and status offense cases. The Section is called upon to intervene and investigate many family related problems such as domestic violence, unruly youths, incidents involving the contributing to the delinquency of minors, and child stealing.

**MISSING PERSONS UNIT**

The Missing Persons Unit, as the name implies, takes reports of missing people and runaways. The Unit is responsible for the evaluation, coordination, and investigation of reports of missing persons, with the aim of locating or apprehending these parties. Unit members endeavor to build criminal cases against those adults who willfully harbor runaways in an effort to reduce the number of places juvenile runaways can go within the community. In order to update and improve their operation, the Unit endeavor to maintain an awareness of national changes occurring in this investigative area.



## ERRATA

Please refer to the corrected Vice/Metro data on this page. The 1988-89 Vice/Metro data on the original page 50 was inadvertently reversed.

## VICE-METRO SECTION

	1989	1988	% Change
<b>Arrest Summary</b>			
prostitution related	1,220	1,255	-2.8%
gambling related	36	24	50.0%
liquor related	103	133	-22.6%
drug related	2,049	1,563	31.1%
miscellaneous	838	680	23.2%
<b>Other Activities</b>			
liquor licenses	257	276	-6.9%
search warrants	245	204	20.1%
public speeches	25	20	25.0%
<b>Total Value of Drugs Seized</b>	<b>\$3,932,745*</b>	<b>\$4,071,617</b>	<b>-3.4%</b>

\* The decrease in the estimated street value of drugs is somewhat misleading because of the fluctuation in the street value of drugs.

## YOUTH SERVICES SECTION

	1989	1988	% Change
<b>Juvenile Unit</b>			
complaints received	15,276	12,370	23.5%
complaints cleared			
by arrest	5,940	3,177	87.0%
cases adjusted	2,714	2,047	32.6%
exceptionally cleared	2,396	2,604	-8.0%
inactive	2,375	2,701	-12.1%
unfounded	96	136	-29.4%
special investigations	1,755	1,705	2.9%
<b>Missing Persons Unit</b>			
Local persons reported missing			
juvenile males	2,169	1,582	37.1%
juvenile females	2,152	1,762	22.1%
adult males	619	543	14.0%
adult females	449	456	-1.5%
Local persons located	5,372	4,343	23.7%
Outside persons reported missing			
juvenile males	117	153	-23.5%
juvenile females	109	108	0.9%
adult males	20	16	25.0%
adult females	11	16	-31.3%
Outside persons located	260	285	-8.8%



	1989	1988	% Change
<b>Child Abuse Unit</b>			
Complaints Received	466	583	-20.1%
Complaints cleared			
by arrest	174	251	-30.7%
cases adjusted	1	2	-50.0%
exceptionally cleared	179	205	-12.7%
inactive	52	62	-16.1%
unfounded	45	26	73.1%
special investigations	15	37	-59.5%

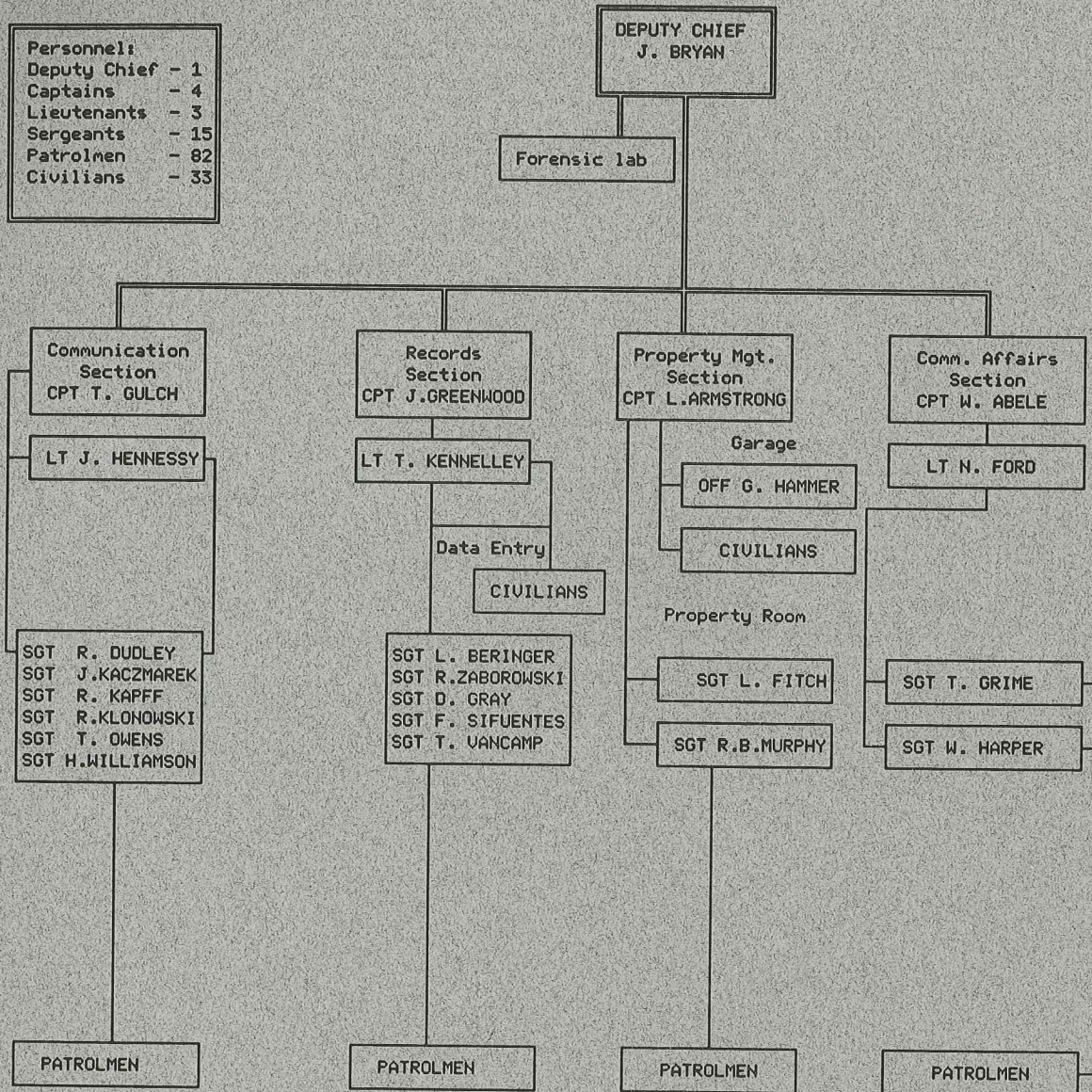


**SUPPORT SERVICES  
BUREAU**



SUPPORT SERVICES BUREAU  
( As of: DEC 1989 )

Personnel:	
Deputy Chief	- 1
Captains	- 4
Lieutenants	- 3
Sergeants	- 15
Patrolmen	- 82
Civilians	- 33





## **SUPPORT SERVICES BUREAU**

### **COMMUNICATIONS SECTION**

The Communications Section, as its name implies, is the primary hub of the entire Police Division's emergency communications network, including: telephone communications, radio communications, and teletype communications. This Section receives and records on tape, all necessary incoming calls, both by radio and by telephone. It is responsible for dispatching all necessary police units to calls for service and other police situations. Section personnel monitor the National Weather Service teletype and broadcast all severe weather information. In addition, this Section is responsible for maintaining the portable radio inventory and the battery management program to ensure the proper functioning of the portable radio equipment.

### **FORENSIC LABORATORY**

The Toledo Police Regional Forensic Laboratory provides its technical services to all area law enforcement agencies. Working in conjunction with the Scientific Investigation Unit, it develops proper methods for the collection and preservation of physical evidence. Lab services which are provided include: forensic drug analysis, arson analysis, firearms, identification, serial number restoration, blood alcohol determination, serological testing, hair and fibre determination and various other microanalytical techniques. Crime Lab personnel are called upon to testify in court as to their analytical findings.

### **PROPERTY MANAGEMENT SECTION**

The Property Management Section has the responsibility of maintaining control and accountability of all Division owned property. It functions as the receiving point for all incoming and outgoing deliveries for the entire Division. Included within its sphere of responsibility is the task of maintaining the Division's Motor Pool and the equipment assigned to each vehicle, overseeing the operation of the Police Armory and its arsenal, as well as maintaining the proper and legal functioning of the Police Property Room. This Section conducts the Police Division's auctions in which autos, bicycles, and any other confiscated property, which remains unclaimed is offered for sale to the general public.

### **RECORDS SECTION**

The Police Division's Records Section acts at the central repository of all Division crime reports, criminal histories, information on lost, stolen, and recovered property, and all other operational information. By maintaining a historical record of Division activities such as files and updates on criminals, suspected criminals, person wanted on warrants, arrests, criminal activity statistics, fingerprints, photographs, stolen and recovered property and vehicles, information is readily accessible to Division members and other qualified agencies.



## COMMUNITY AFFAIRS SECTION

The Community Affairs Section acts as liaison between community organizations and the Division by attending meetings, providing information and reporting to the Administration on past, current and potential community problems. Another primary responsibility of this Section is that of investigating complaints from the local school systems involving the safety of students, teachers, and administrators, as well as investigating complaints involving neighbors which can not be diffused or alleviated by conventional police practices. The Section conducts traffic and personal safety programs in the schools, as well as coordinating the pre-school, summer safety program, Safe-T-City. Community crime prevention is also under its control.



## RECORDS SECTION

### Reports Desk

Total reports	104,871
T.R.U. reports	14,955
Reports filmed	56,900

### Arrest Warrant Desk

Warrant grace letters	4,527
New warrants processed	7,125
Warrants withdrawn	9,069

Total arrests processed	22,204
-------------------------	--------

### Identification

fingerprints processed	37,391
film processed	2,108
color prints	4,228
black & white prints	3,213
latent fingerprints	41
miscellaneous functions	5,275

### Records Checks

Total records checks	18,460
paid records check	9,698
unpaid records check	8,762
Expungements	519

### Auto Desk

stolen autos processed	4,490
recovered autos	3,743

#### Autos Towed by District

North	5,655
South	4,891
East	1,163
Heavy Duty	103

Total Tows	11,812
------------	--------

Kasle Iron Junk	1,393
Other autos junked	2,292
Autos auctioned	137

### N.O.R.I.S. Entries

warrants	6,383
arrest & recidivist	4,906
A.T.L. entries	5,443
new RIDs	3,703
cancellations	57,683
modifications	55,519
transfers	966

Total entries	134,603
---------------	---------

### Records Section

Arrests	295
Summons issued	2,294

### Income Received

crime reports - counter	\$12,378.50
crime report - mail	\$28,401.25
record checks - counter	\$31,188.00
records checks - mail	\$13,441.75
auto auction	\$66,620.00
identification	\$10,428.00
<b>Total Income</b>	<b>\$162,458.00</b>



## TRAINING SECTION

SUBJECT MATTER	ATTENDEES	TRAINING TIME
43rd Toledo Police Recruit Class * Began training September 9, 1988	27	22 Weeks
First Line Supervisor's Training	26	8 Days
Intermediate Supervisory Training	15	5 Days
PR-24 Instructor's Training Course	11	3 Days
Accident Investigation Course	14	10 Days
Radar Course (two offered)	33	1 Day
Cardiopulmonary Resuscitation Course	19	1 Day
Semi-Automatic Pistol Instructor's Course	18	5 Days
Cardiopulmonary Resuscitation Course	Police Explorers Post Police Retirees Assoc.	1 Day
Sig Sauer Armorer's School and Weapons Familiarization Course	All Firearms Instructors	3 Days
Semi-Automatic Pistol Training * Phase I of 9mm Transition	94	5 Days
In-Service Training	All Division Personnel	1 Day
In-Service Training	All Division Personnel	1 Day
Cardiopulmonary Resuscitation	Day Shift Personnel	1 Day
Annual Firearms Qualifications	All Division Personnel	1 Day
In-Service Training	All Division Personnel	1 Day



## COMMUNITY AFFAIRS SECTION

### Community Relations Programs 1989

*	School Presentations	646
	<i>Attendance</i>	19,431
*	Public Talks	57
	<i>Attendance</i>	9,123
*	Meetings Held/Attended	119
*	Child Fingerprint Programs	10
	<i>Children fingerprinted</i>	1,187
*	Citizen Complaints	94
*	School Related Complaints	420
*	Racial-Religious-Ethnic Complaints	41
*	Surveillances	129
*	Referrals	33
*	Arrests	36

### School Safety Program 1989

*	Safe-T-City	1,118
*	School Safety Assemblies	659
	<i>Attendance</i>	54,172

### Block Watch Program 1989

*	Block Watch Presentations	109
	<i>Attendance</i>	3,642
*	New Residences Enrolled	1,423
*	Total Residences Participating	38,390

\*\* 1989-1988 data comparisons are not available due to a change in the format for collecting data during 1989.



## PROPERTY MANAGEMENT SECTION

### MOTOR POOL

Inventory of Division Vehicles	1989
* Harbor Patrol Boats	2
* Large Vans	2
* Mini Vans	2
* Pickup Trucks	2
* Stake Truck	1
* Mobile Command Post	1
* Trailers	3
* Three Wheel Motorcycles	2
* Four Wheel Drive Vehicles	6
* Traffic Aide Vehicles	9
* Patrol Wagons	19
* Marked Sedans	99
* Unmarked Sedans	121
	269
<b>Total Fleet</b>	<b>269</b>

### ARMORY

Inventory of Weapons	
* Handguns	809
* Shotguns	190
* Carbines	36
* Rifles	12
* Teargas Guns	18
	1,065
<b>Total Weapons</b>	<b>1,065</b>

### PROPERTY ROOM

	1989	1988	% Change
Incoming Cases	8,340	8,212	1.5%

### AUCTION PROCEEDS

Two general auctions were held during 1989, which brought in \$20,143.00 in gross receipts. With the addition of \$33,186.61 in unclaimed funds, a total of \$53,329.61 were placed in the General Fund.



## COMMUNICATIONS SECTIONS

<b>Total Incoming Calls</b>	334,515
6am x 2pm	84,424
2pm x 10pm	140,664
10pm x 6am	109,427
Telephone Reporting Unit	17,378
18 Hour Parking Checks	3,351

## FORENSIC LABORATORY

<b>Cases Received</b>	<b>1989</b>	<b>1988</b>	<b>% Change</b>
Toledo Police Division	2,397	2,476	-3.2%
Outside Agencies	167	157	6.4%

<b>Analysis Type</b>	<b>1989</b>	<b>1988</b>	<b>% Change</b>
General Analytical Chemistry	22	32	-31.3%
Serological/Microscopy	113	107	5.6%
Firearms Identification/Toolmarks	144	116	24.1%
Drug Chemistry (Marijuana)	238	207	15.0%
Drug Chemistry (cocaine, etc.)	1,866	1,968	-5.2%
Alcohol Determination	178	196	-9.2%
Miscellaneous	3	7	-57.1%
<b>Total Cases</b>	2,564	2,633	-2.6%
Subpoenas Received	712	444	60.4%

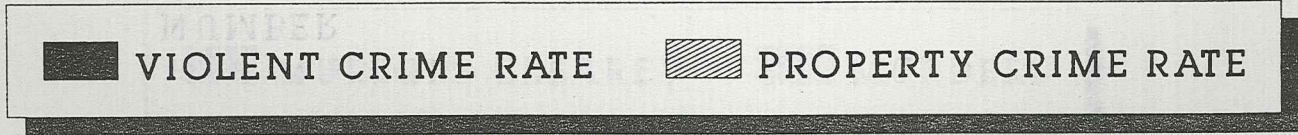
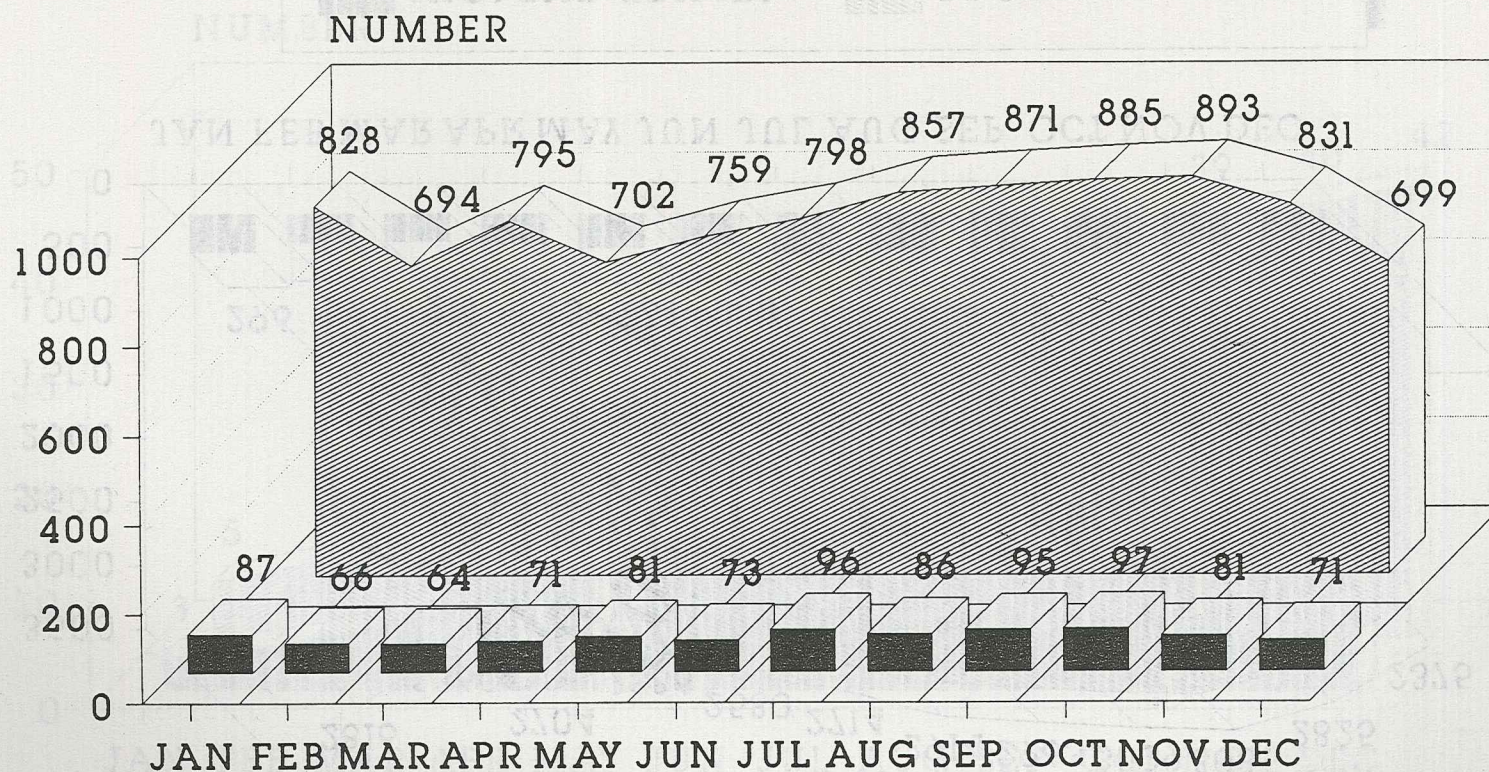


**CRIME DATA**



# 1989 UNIFORM CRIME REPORTS DATA

## CRIME RATE PER 100,000

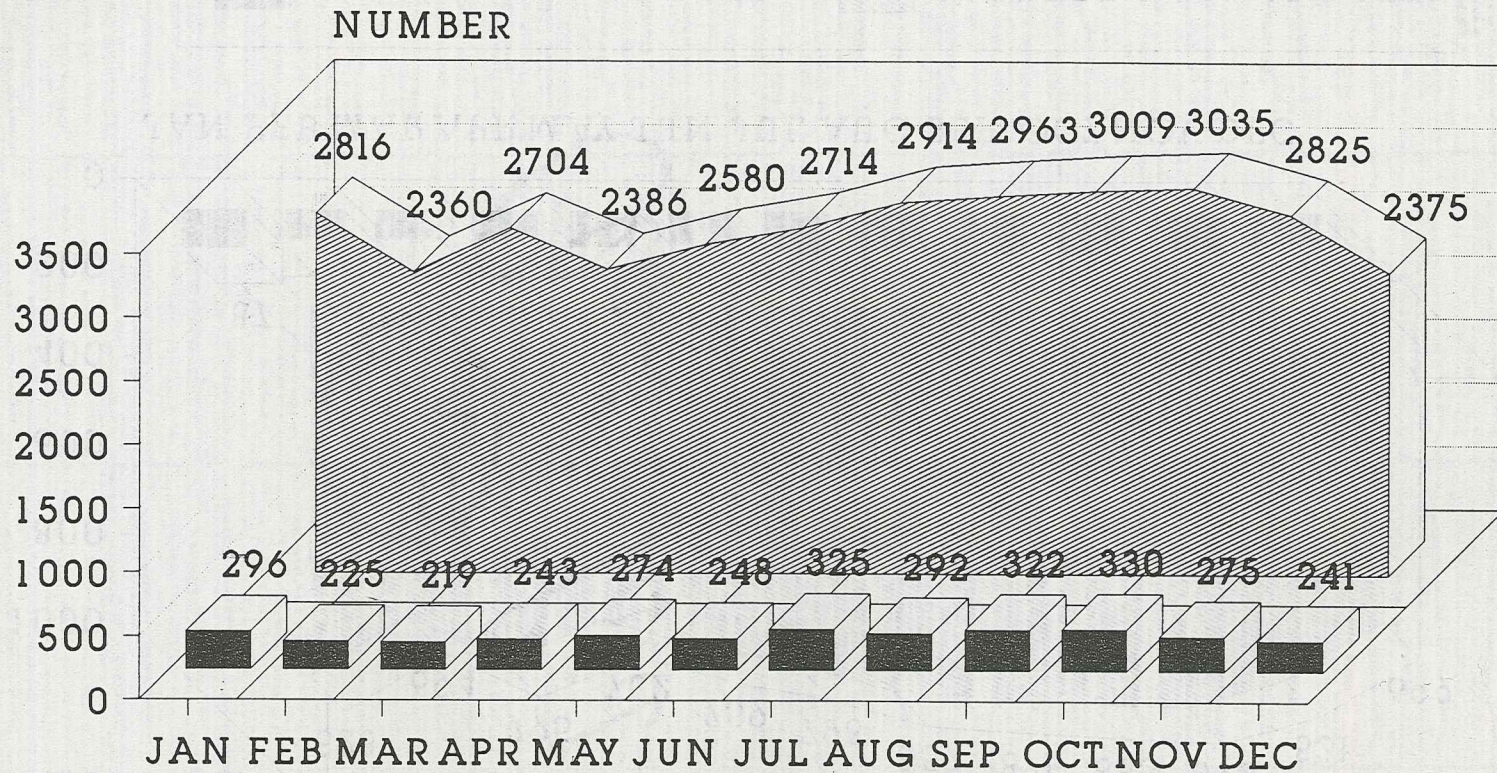


BASED ON 344,000 POPULATION



# 1989 UNIFORM CRIME REPORTS DATA

## VIOLENT CRIME vs PROPERTY CRIME

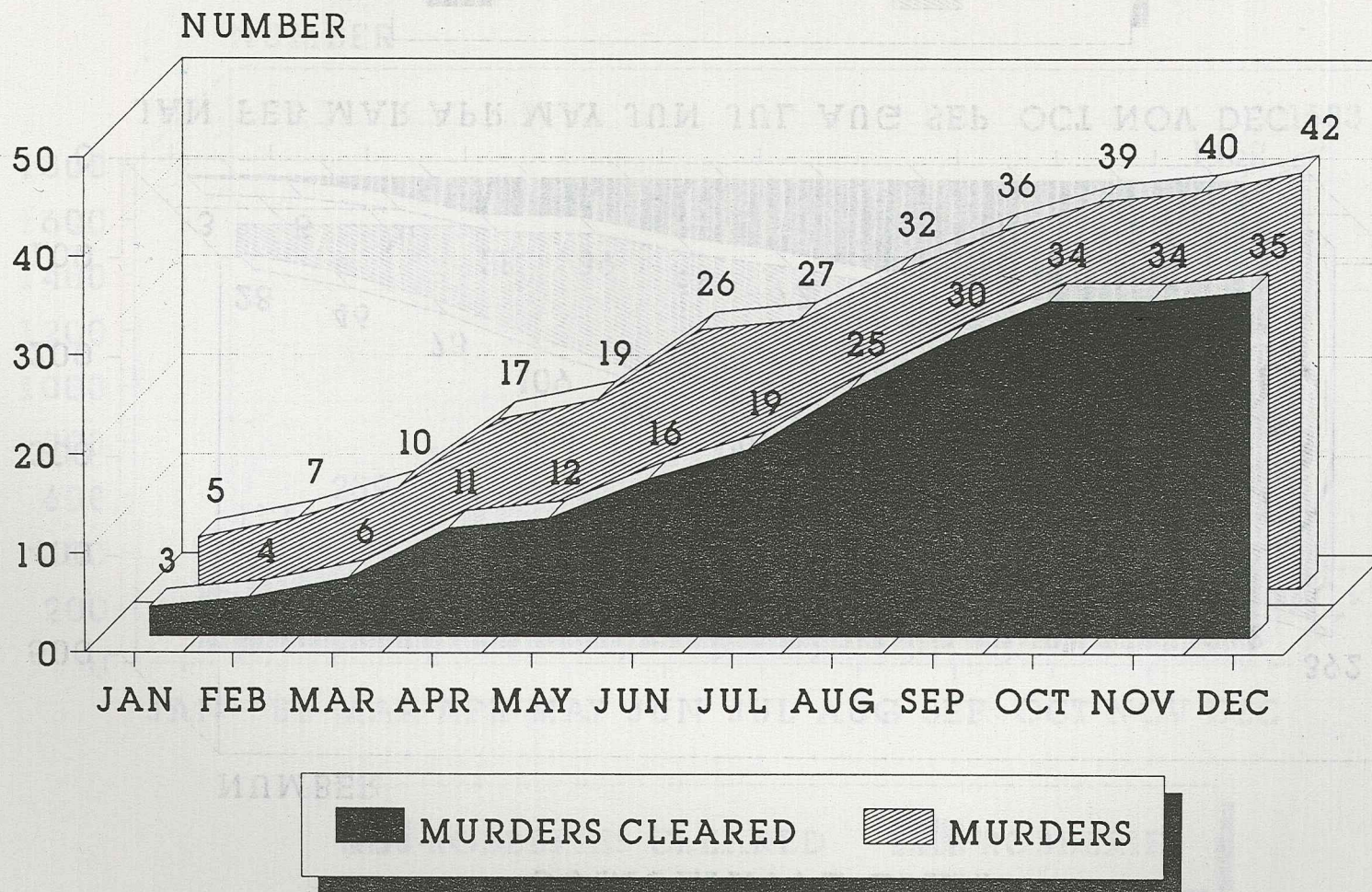


VIOLENT CRIMES
  PROPERTY CRIMES



# 1989 UNIFORM CRIME REPORTS DATA

## CUMULATIVE DATA

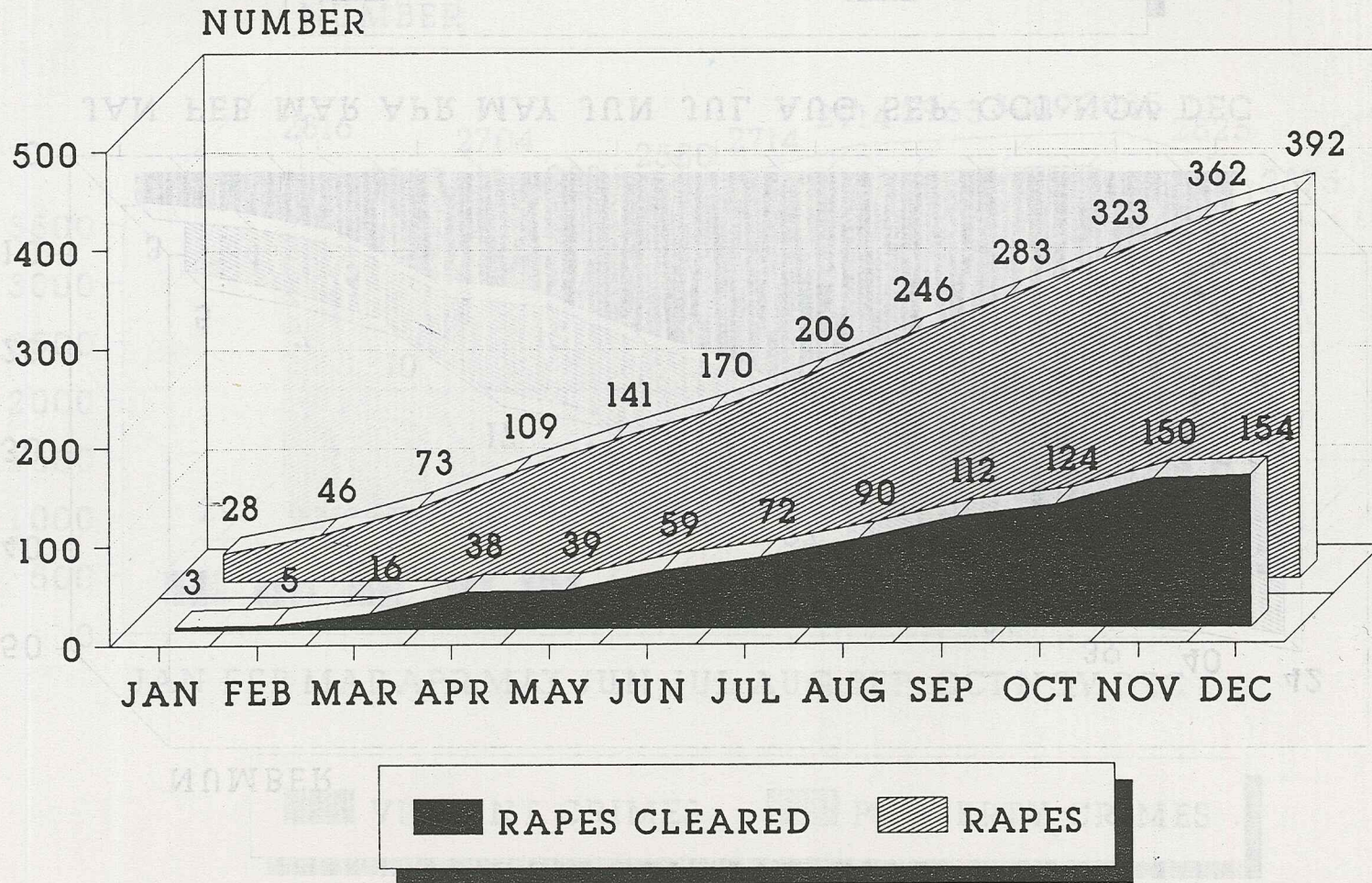


AS OF DECEMBER 31, 1989



# 1989 UNIFORM CRIME REPORTS DATA

## CUMULATIVE DATA

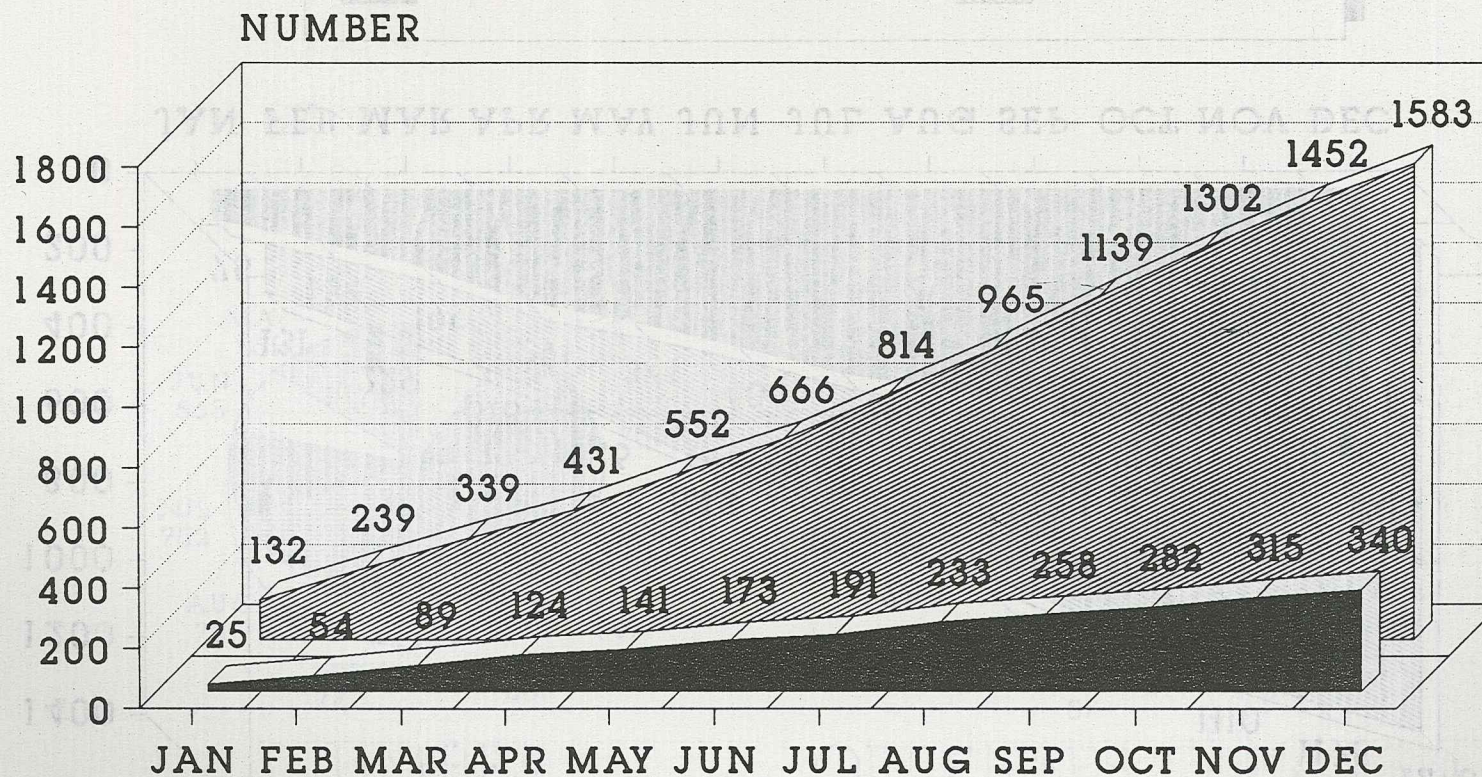


AS OF DECEMBER 31, 1989



# 1989 UNIFORM CRIME REPORTS DATA

## CUMULATIVE DATA



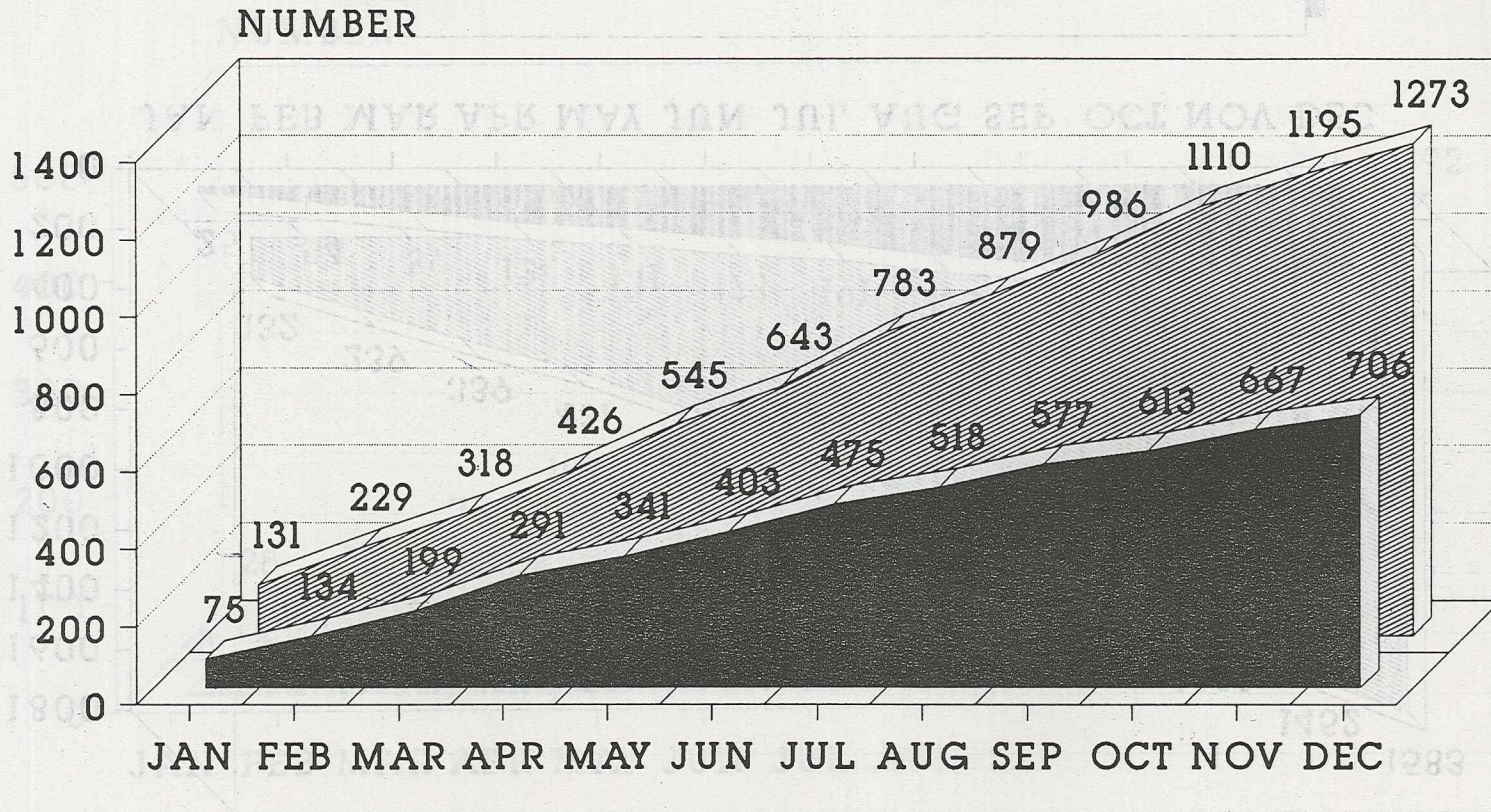
ROBBERIES CLEARED
  ROBBERIES

AS OF DECEMBER 31, 1989



# 1989 UNIFORM CRIME REPORTS DATA

## CUMULATIVE DATA



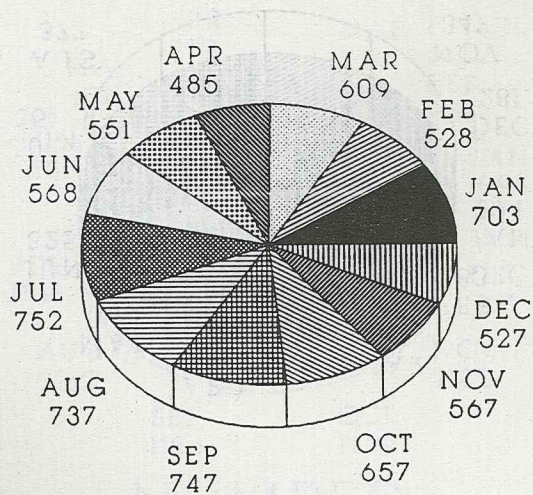
■ AGG. ASSLT. CLEARED    ▨ AGG. ASSLT.

AS OF DECEMBER 31, 1989

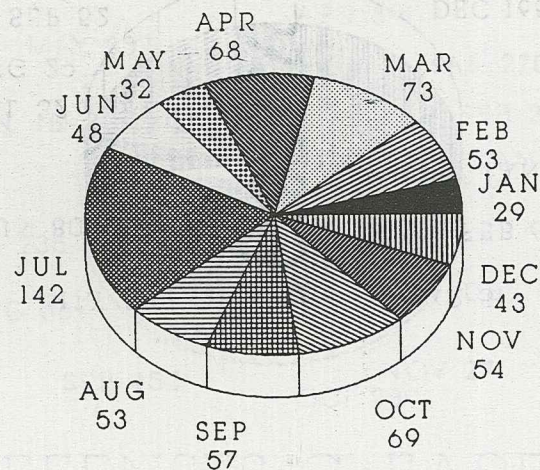


# 1989 UNIFORM CRIME REPORTS DATA

## BURGLARIES



NUMBER



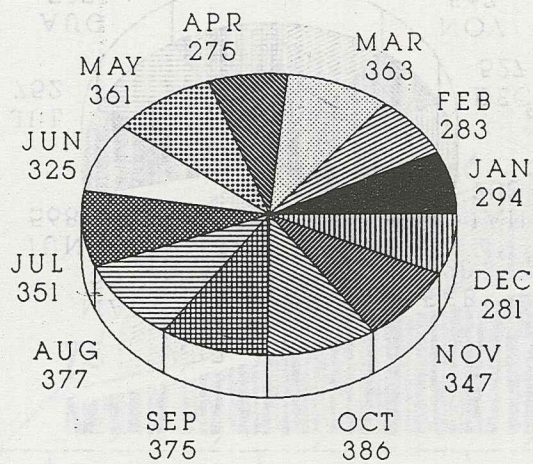
OFFENSES CLEARED

AS OF DECEMBER 31, 1989

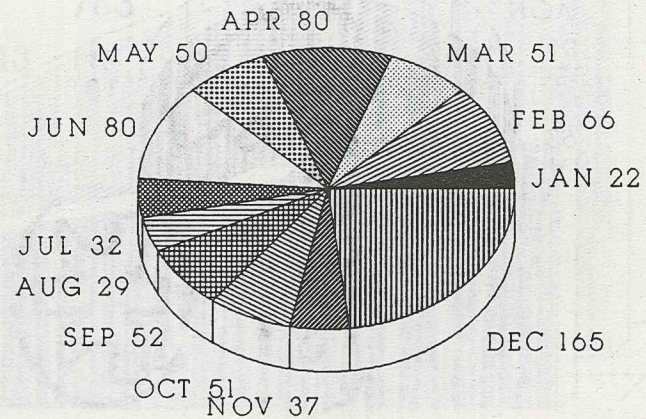


# 1989 UNIFORM CRIME REPORTS DATA

## LARCENIES \$300+



NUMBER



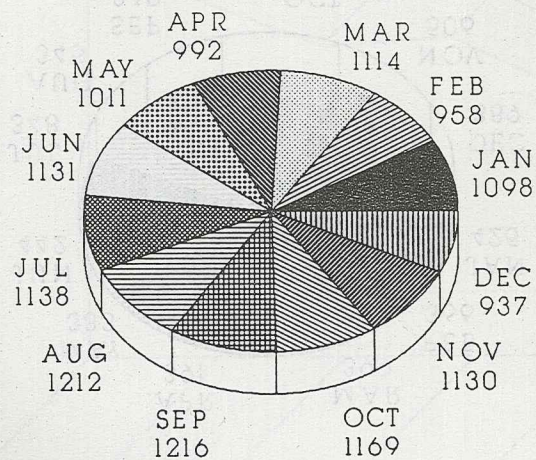
OFFENSES CLEARED

AS OF DECEMBER 31, 1989

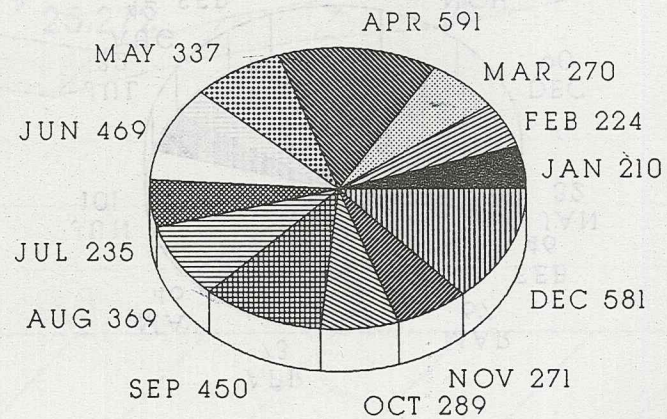


# 1989 UNIFORM CRIME REPORTS DATA

## LARCENIES \$299-



NUMBER



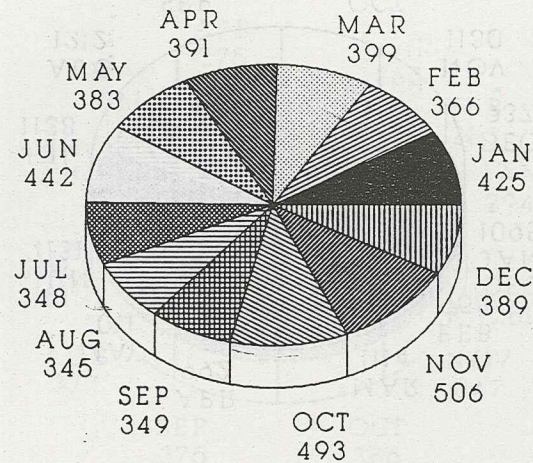
OFFENSES CLEARED

AS OF DECEMBER 31, 1989

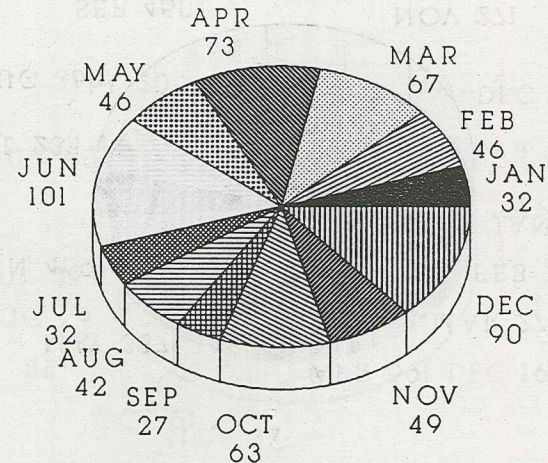


# 1989 UNIFORM CRIME REPORTS DATA

## AUTO THEFTS



NUMBER



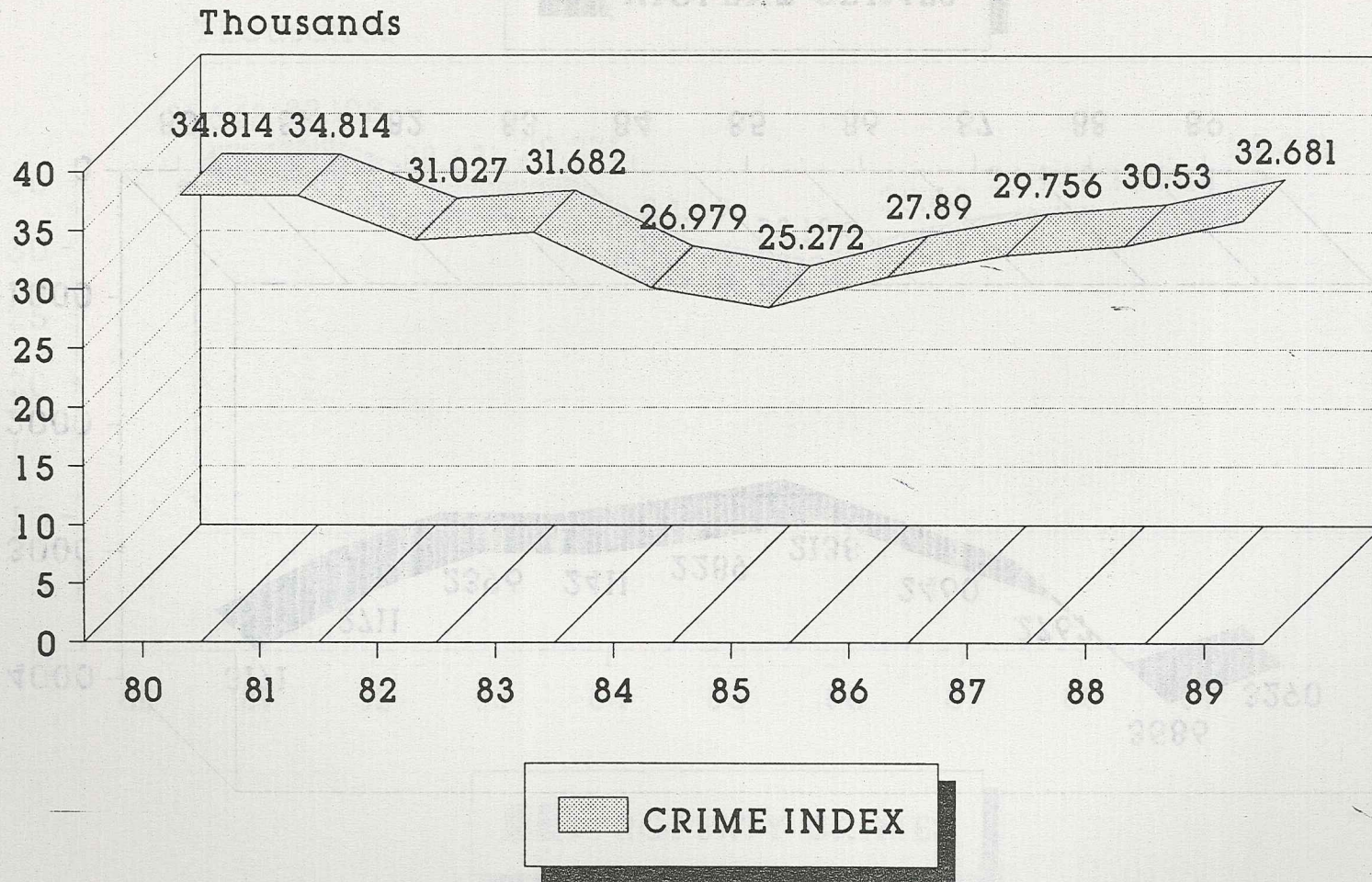
OFFENSES CLEARED

AS OF DECEMBER 31, 1989



# UNIFORM CRIME REPORTS DATA

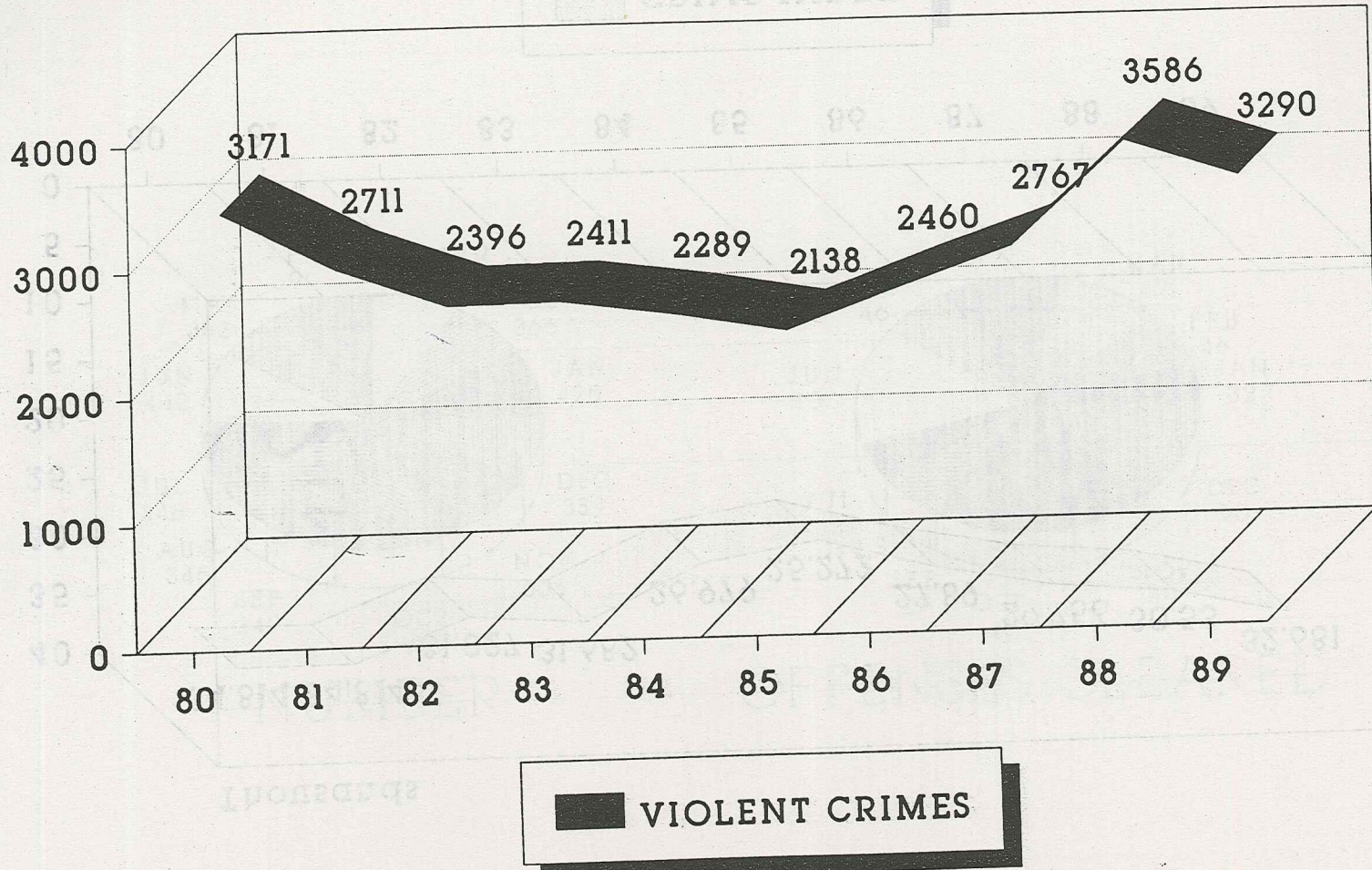
1980-1989



1988 DATA COMPLETE THROUGH SEPTEMBER



# UNIFORM CRIME REPORTS DATA 1980-1989

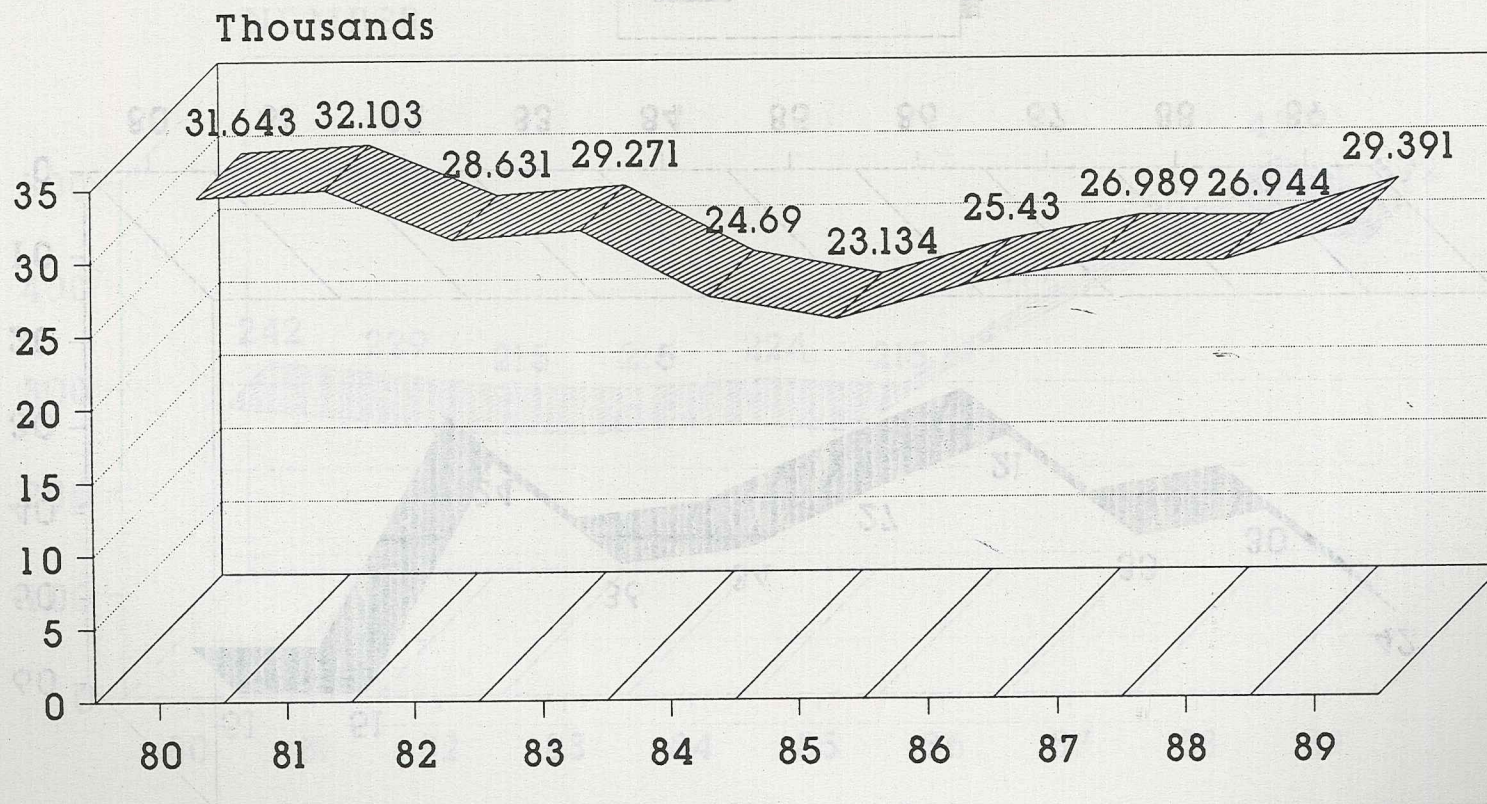



1988 DATA COMPLETE THROUGH SEPTEMBER



# UNIFORM CRIME REPORTS DATA

1980-1989

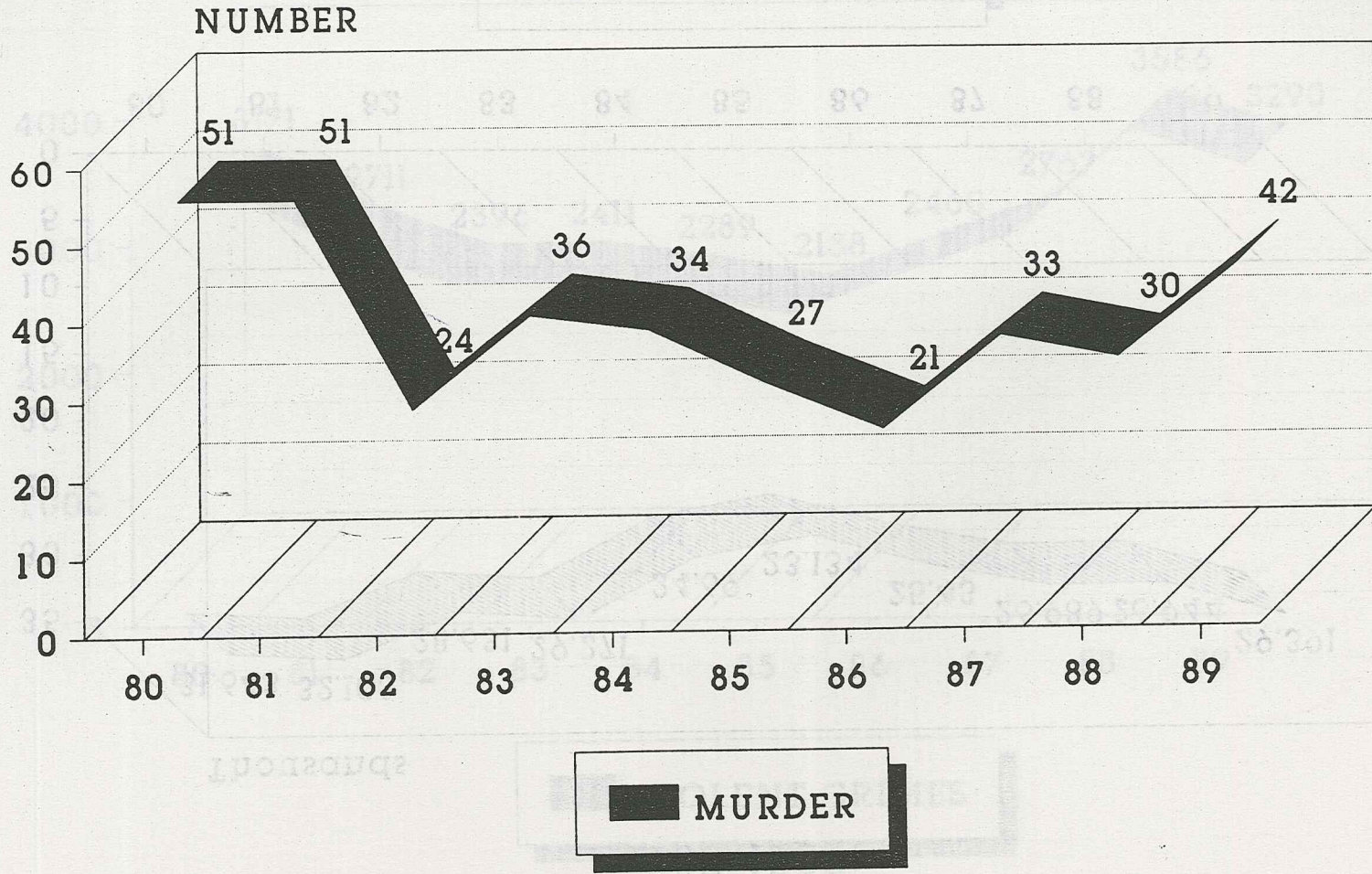


 PROPERTY CRIMES

1988 DATA COMPLETE THROUGH SEPTEMBER



# UNIFORM CRIME REPORTS DATA 1980-1989

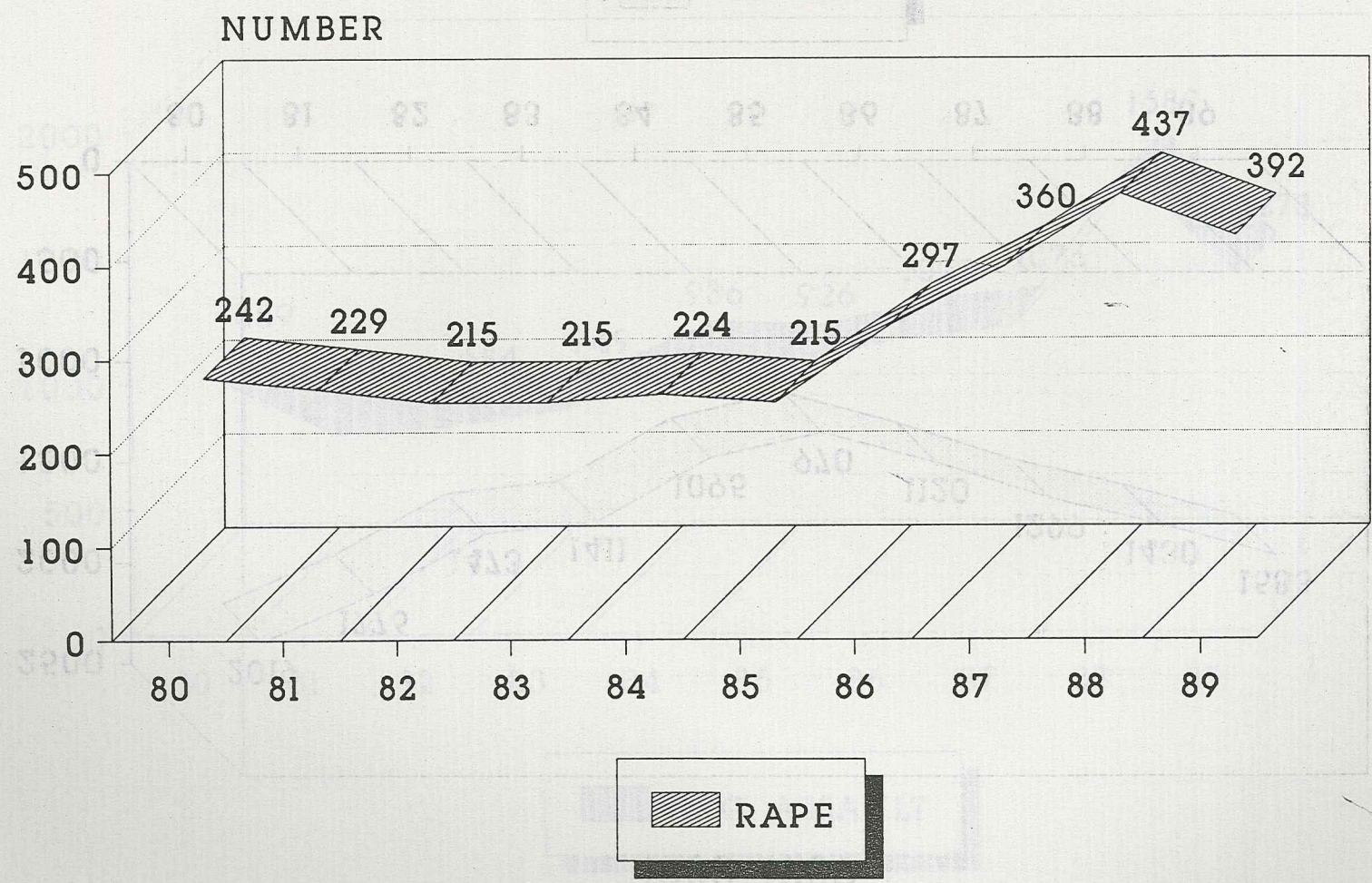


1988 DATA COMPLETE THROUGH SEPTEMBER



# UNIFORM CRIME REPORTS DATA

1980-1989

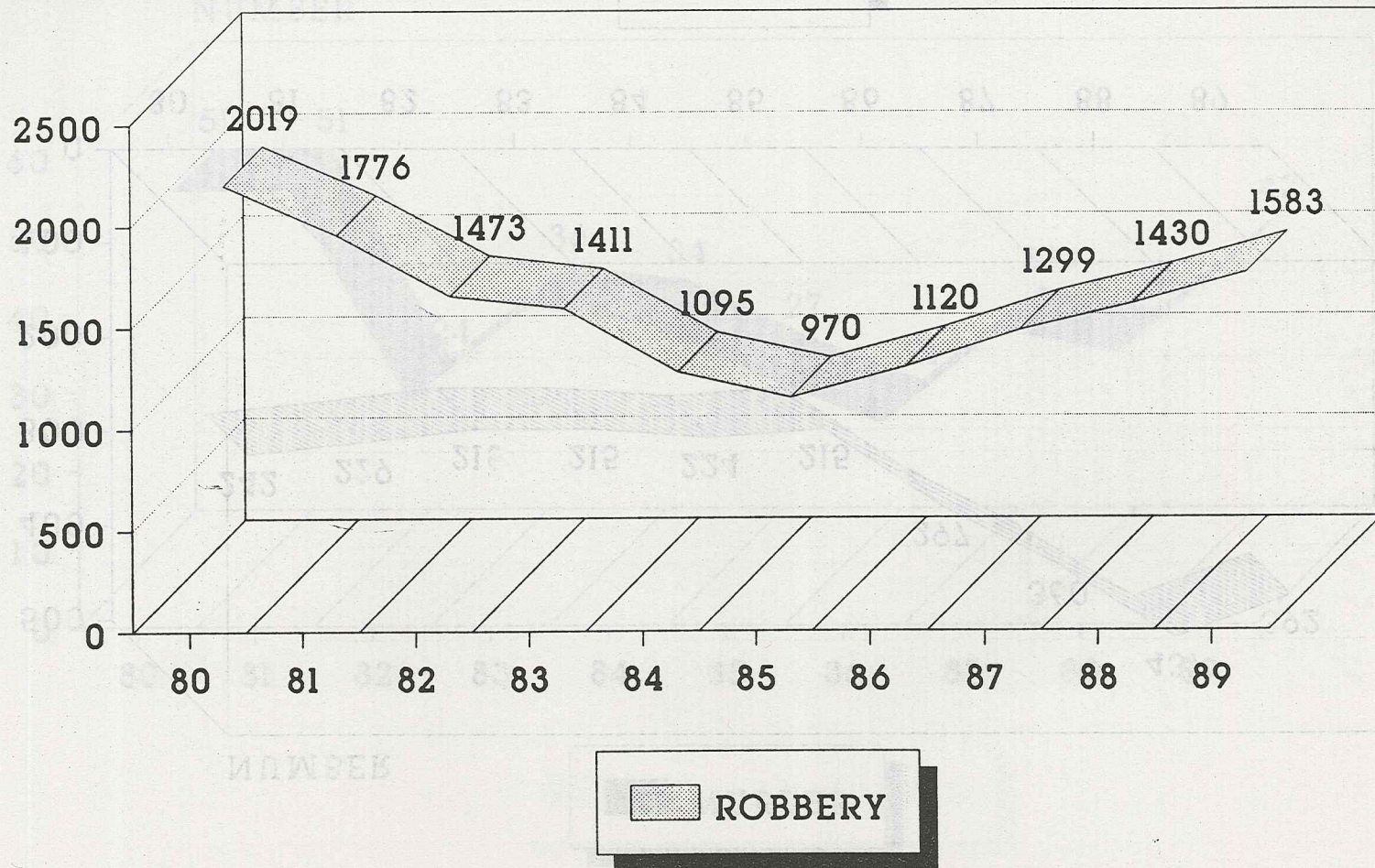


1988 DATA COMPLETE THROUGH SEPTEMBER



# UNIFORM CRIME REPORTS DATA

1980-1989

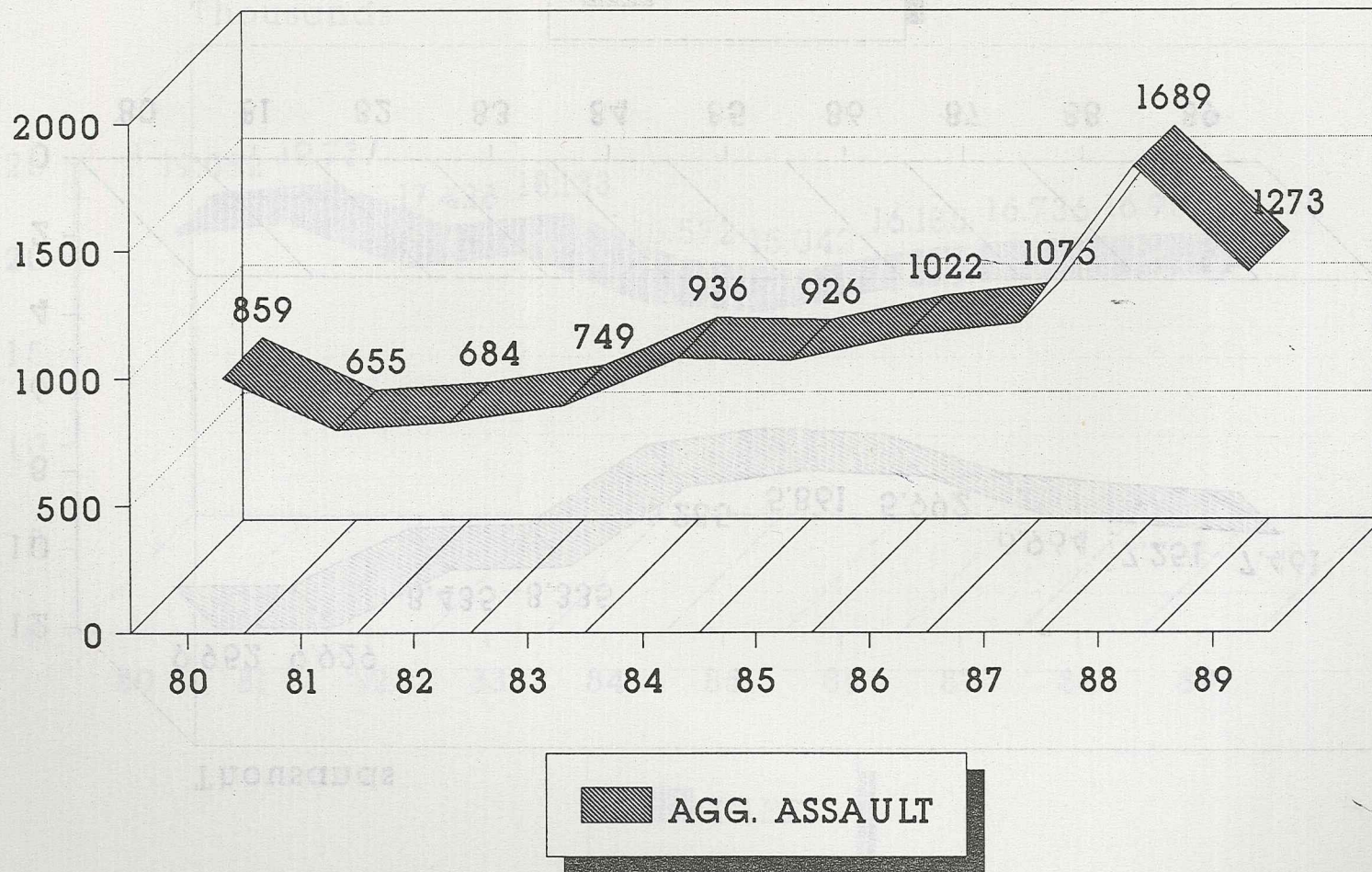


1988 DATA COMPLETE THROUGH SEPTEMBER



# UNIFORM CRIME REPORTS DATA

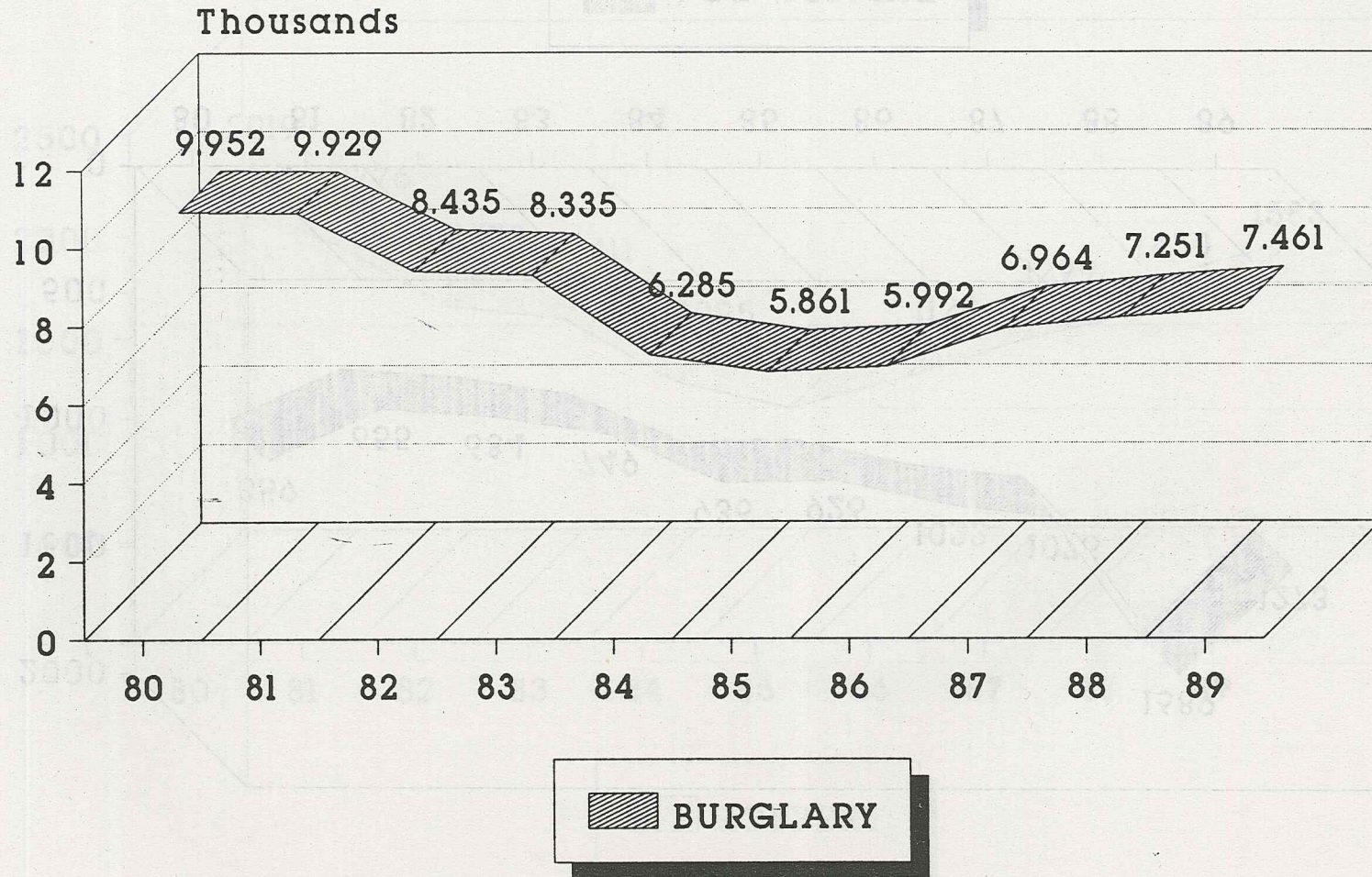
1980-1989



1988 DATA COMPLETE THROUGH SEPTEMBER



# UNIFORM CRIME REPORTS DATA 1980-1989

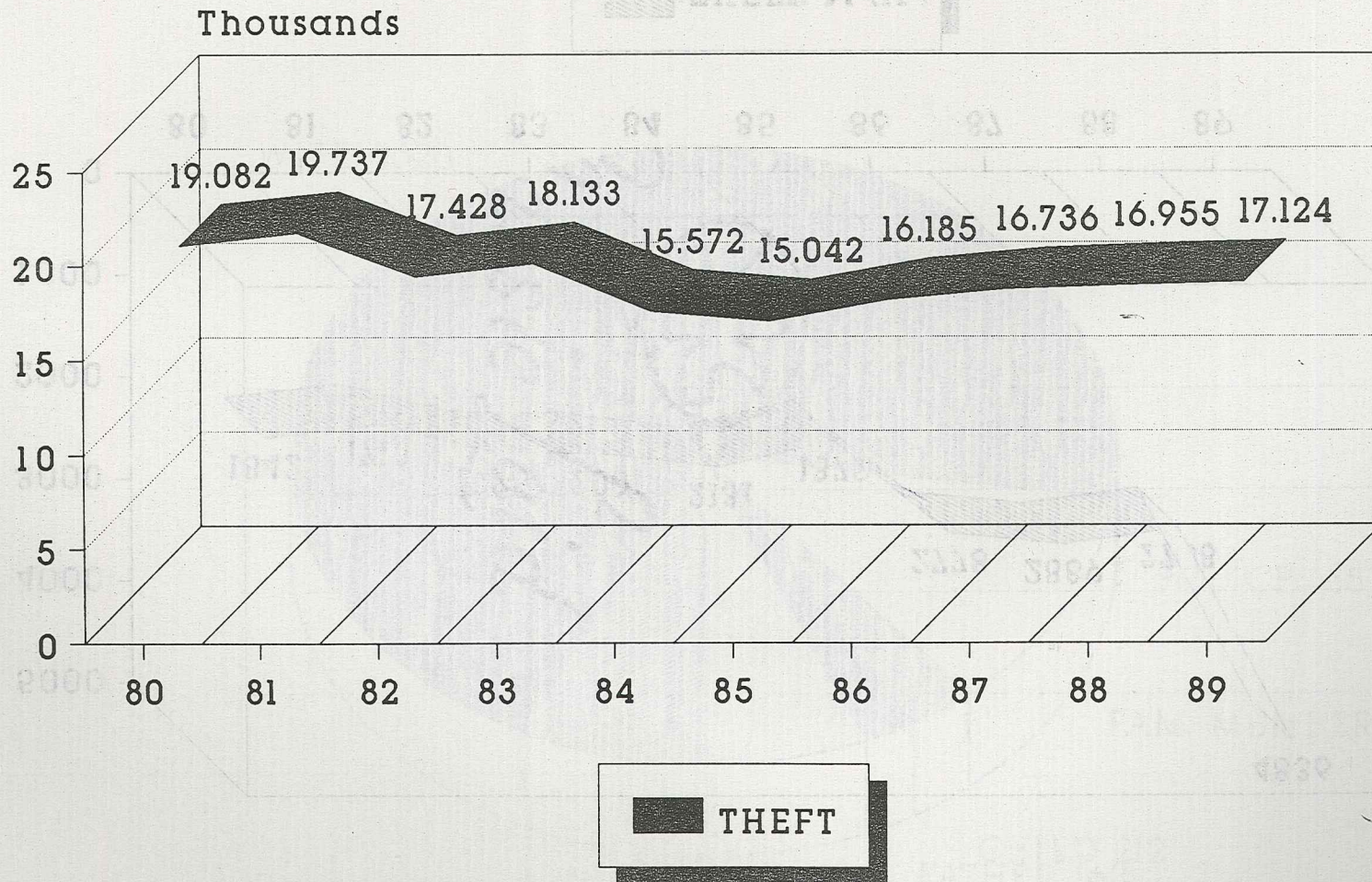


1988 DATA COMPLETE THROUGH SEPTEMBER



# UNIFORM CRIME REPORTS DATA

1980-1989

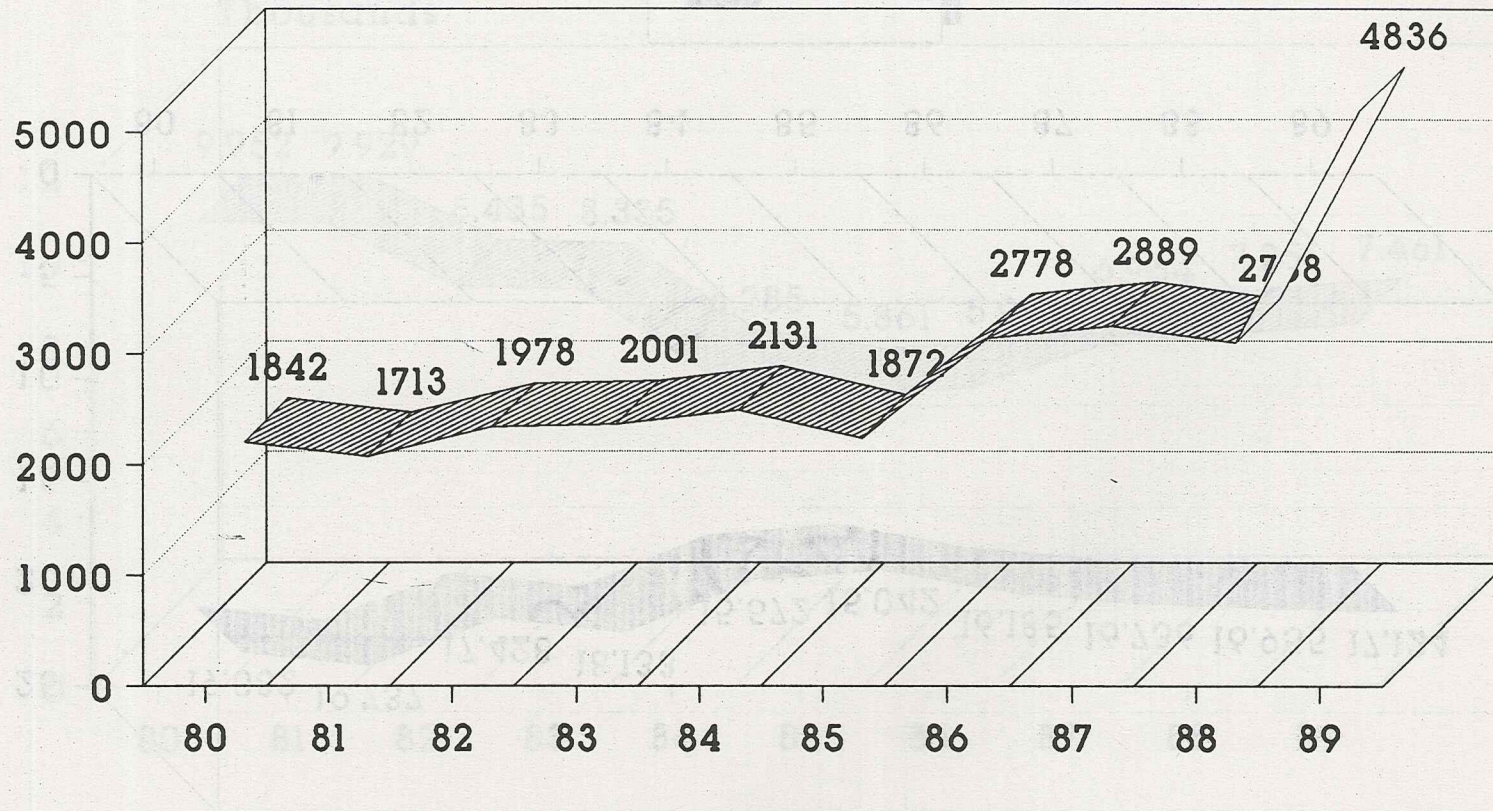


1988 DATA COMPLETE THROUGH SEPTEMBER



# UNIFORM CRIME REPORTS DATA

1980-1989

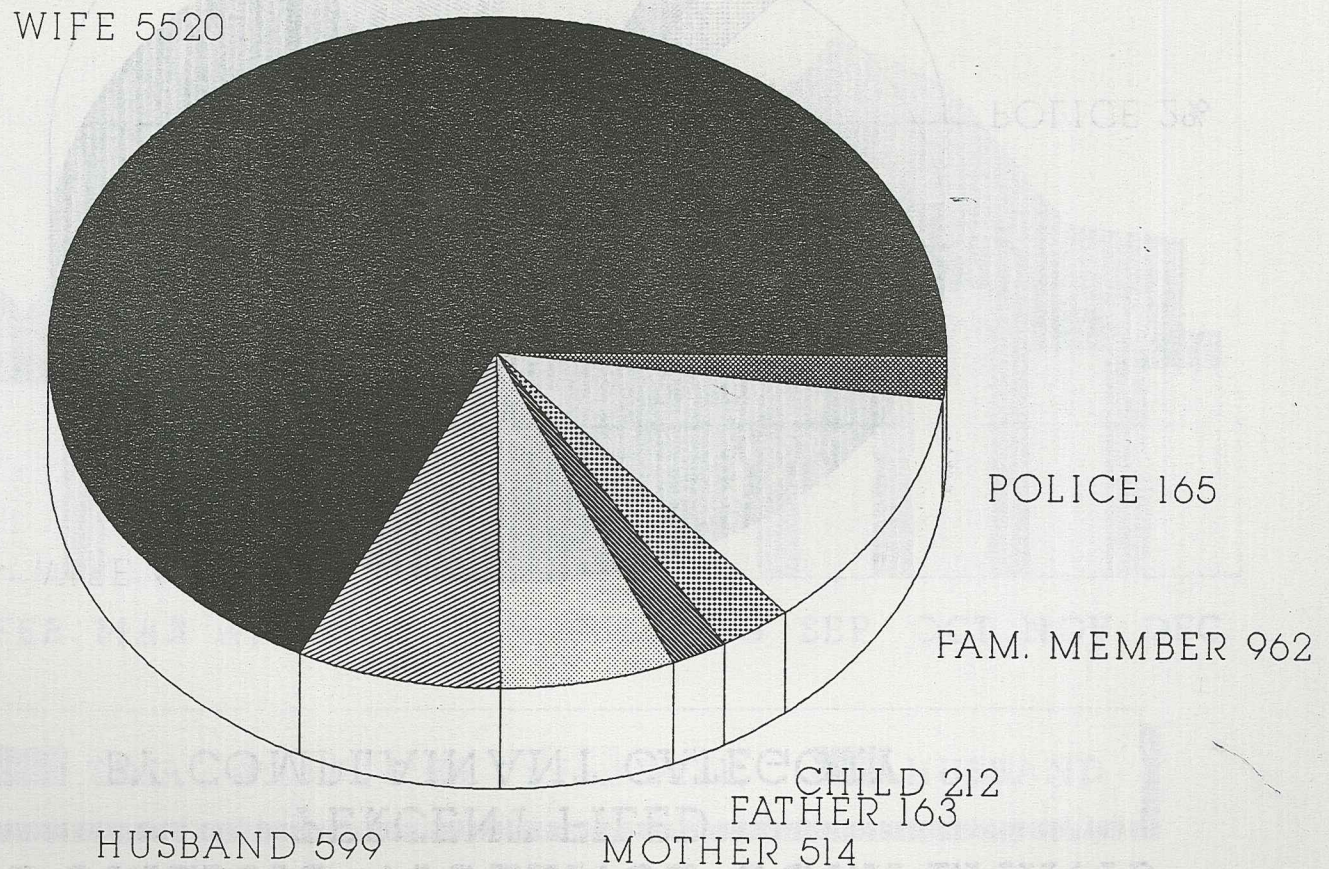


 THEFT M/V

1988 DATA COMPLETE THROUGH SEPTEMBER

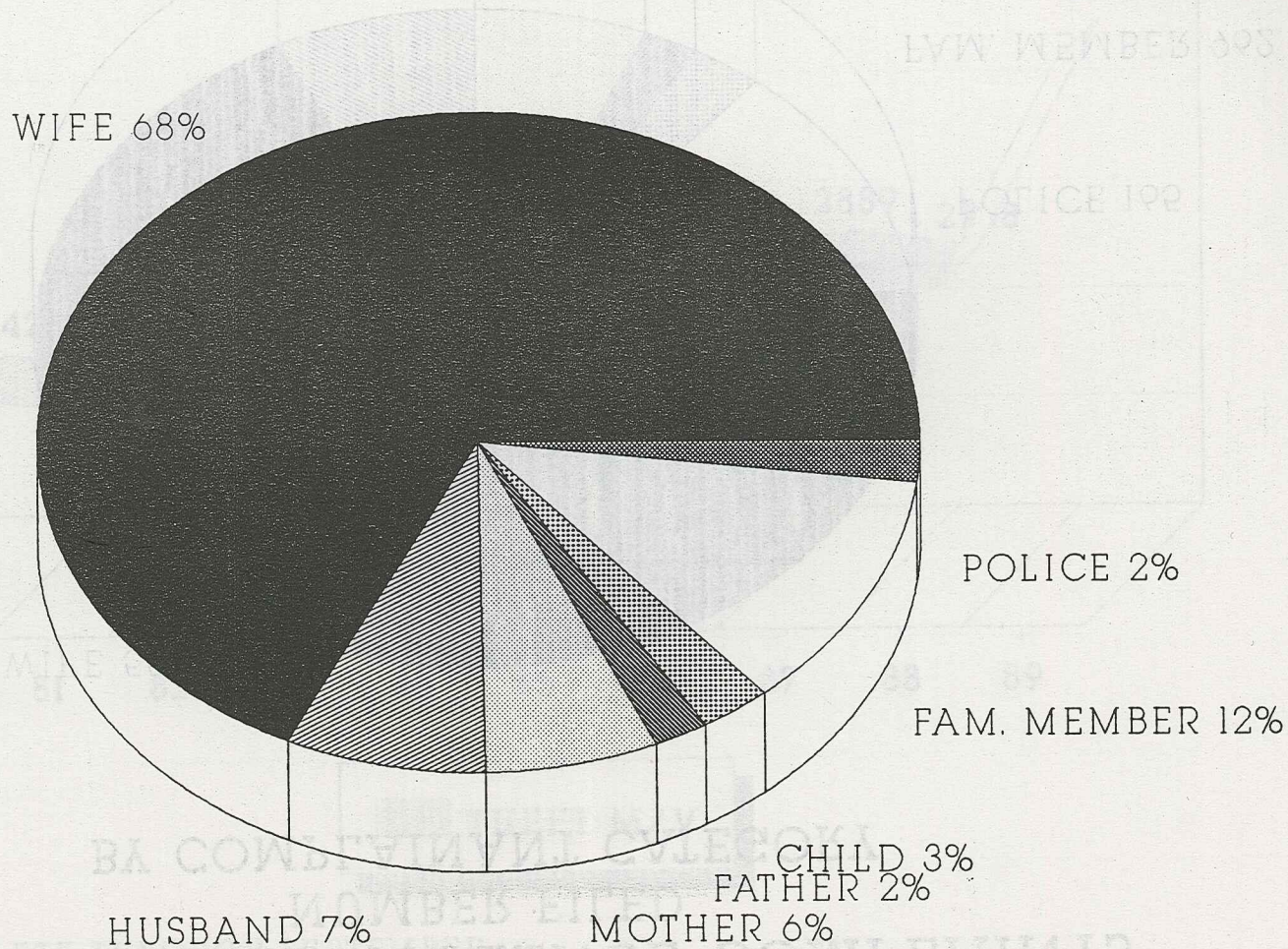


# 1989 DOMESTIC VIOLENCE COMPLAINTS NUMBER FILED BY COMPLAINANT CATEGORY



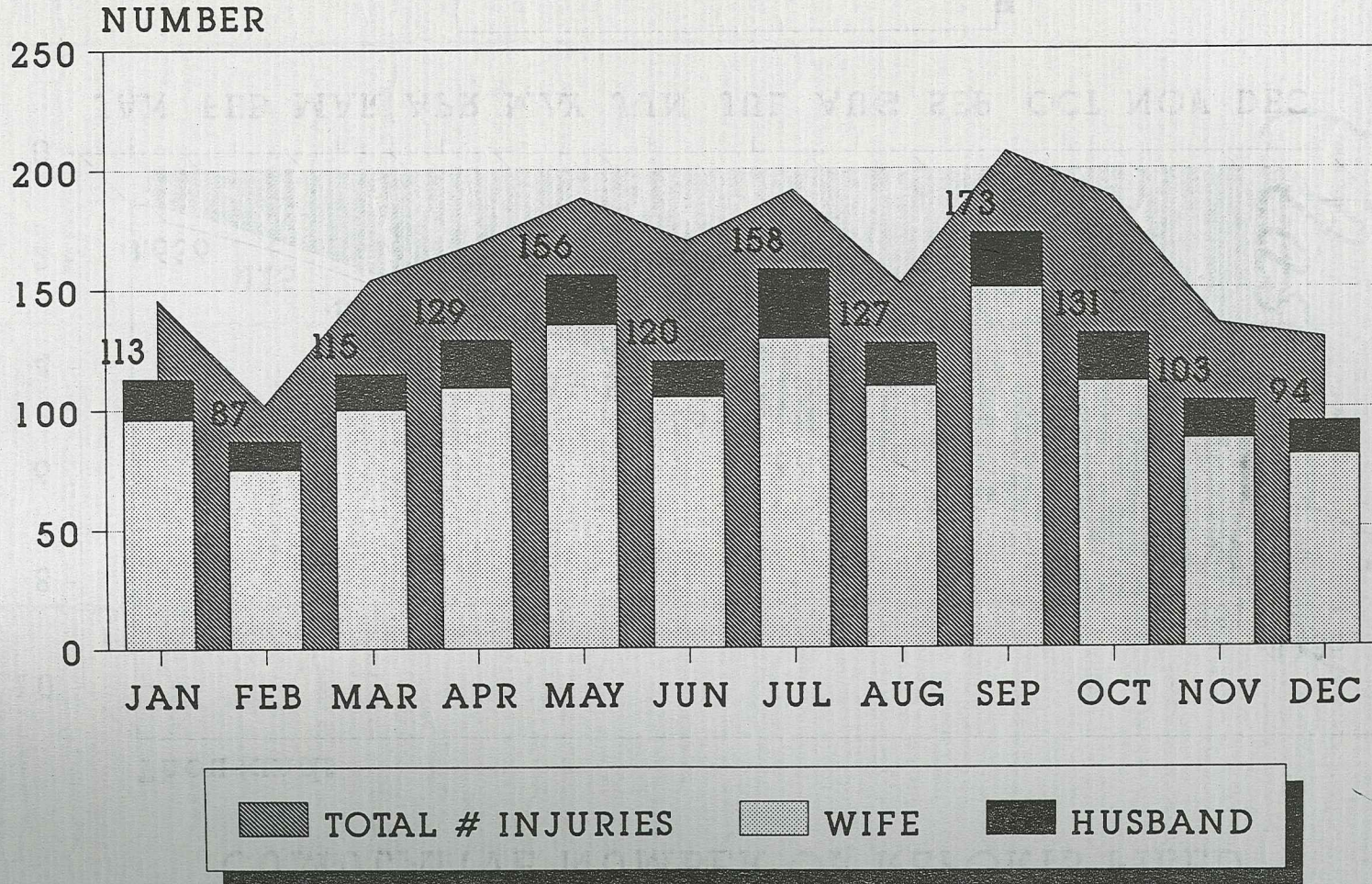


# 1989 DOMESTIC VIOLENCE COMPLAINTS PERCENT FILED BY COMPLAINANT CATEGORY





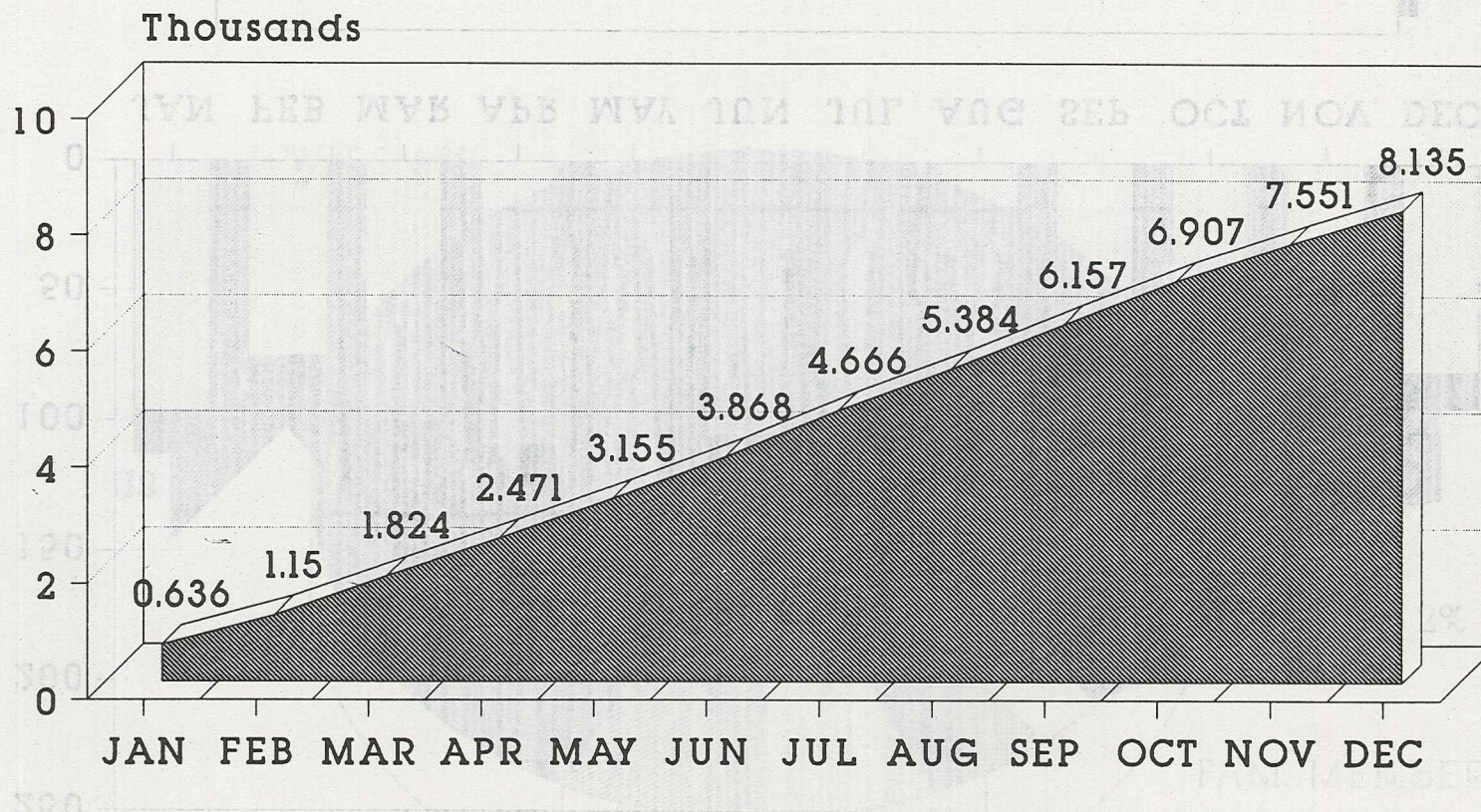
# 1989 DOMESTIC VIOLENCE COMPLAINTS NUMBER OF INJURIES REPORTED





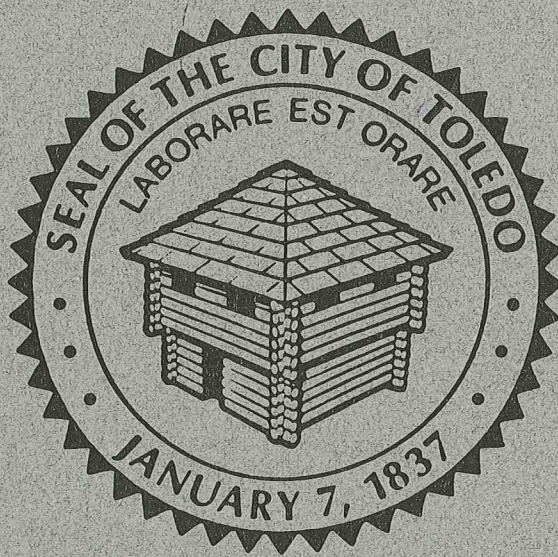
# 1989 DOMESTIC VIOLENCE COMPLAINTS

## CUMULATIVE NUMBER OF REPORTS FILED



 TOTAL COMPLAINTS





PREPARED BY THE PLANNING/INSPECTIONS SECTION  
TOLEDO POLICE DIVISION