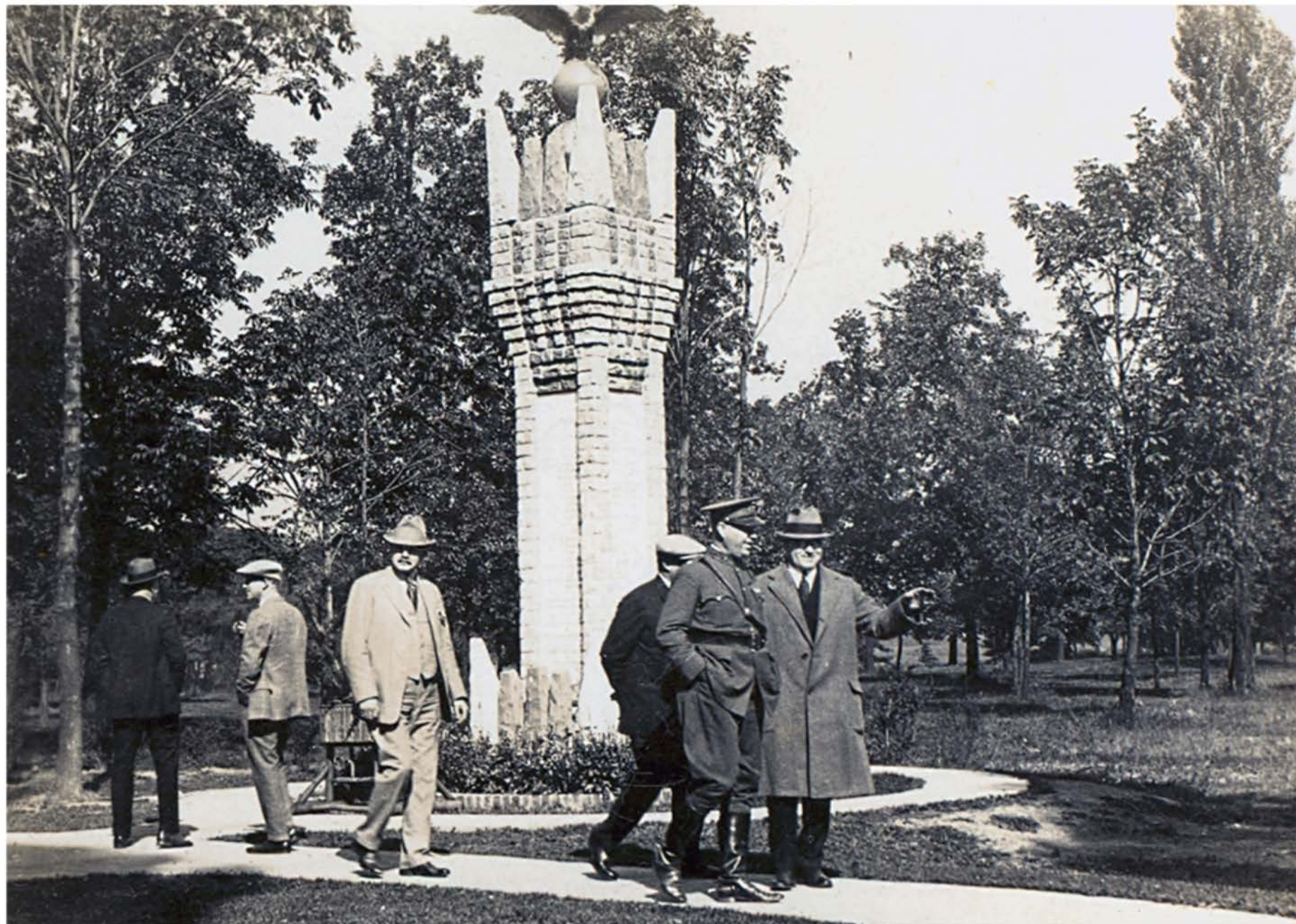


Monument in front of the Range House at the Bay View Range





Inscribed as Follows:

The Toledo Police Dept. Revolver Range
 Built A.D. 1923

Inspector	J. Delehaunty
Patrolman	G. Fackleman
	E. Strabler
	R. Harvey
	J. Eddis
	F. Basso
	S. Saunders
	C. Knudel
	P. Mallack
	C. Fauble
	M. Pfeilschifter
	C. Pieper
	W. Thomas
	F. Rudolph
	L. Dear
	J. Fredericks
Engineer	J. Corbett
	I. Cousino
Sergeant	C. Hennessy
	Arms Instructor
Designer and Supt. Of Constr	
Inspector	J. Delehaunty

Marble & Slate Donated
 By
 The Eckhardt Monumental Co

Plumbing Donated & Installed
 By
 Walter H. Kropp



This Range Made Possible
Through
The Aid And
Cooperation
Of
Hon Bernard F. Brough, Mayor

Safety Director	G. Light
Chief Of Police	H. Jennings

Welfare Director	E. Newcomber
Com Parks Blvds.	M. Moore
Com Of Charities	P. Thompson
Supt. Ottawa Park	G. Lemon

Service Director	W. Jackson
Secretary	G. Laska
Chief Forester	Geo Marsh



This Range Made Possible
Through
The Aid And
Cooperation
Of

Hon Bernard F. Brough, Mayor

Safety Director	G. Light
Chief Of Police	H. Jennings

Welfare Director	E. Newcomber
Com Parks Blvds.	M. Moore
Com Of Charities	P. Thompson
Supt. Ottawa Park	G. Lemon

Service Director	W. Jackson
Secretary	G. Laska
Chief Forester	Geo Marsh

Generously Contributed To
By

1st National Bank
2nd National
Northern National
Commerce Guardian
Ohio Savings
Spitzer Borick
Security
Merchants Clerks
Bell Beckwith Bro --
Toledo Builders Supply
Acme
Acorn
Auburndale
Buckeye
Holet W.O
Superior
