

Annual

Toledo Police Division

R
e
p
o
r
t



1992

1992 ANNUAL REPORT

TABLE OF CONTENTS

Part I	-	Introduction	Page
		Letter of Transmittal	1
		Law Enforcement Code of Ethics	3
		Toledo City Government	4
		Organizational Chart	5
		Mission Statement	6
		Division Goals	7
		History of the Police Division	8
		Police Chiefs - Past & Present	16
		1992 Service Awards	17
		Officers Killed	18
		1992 Retirements	20
		Officer Recognition Program	22
Part II	-	Administration	
		Administration Organization	24
		Police Administration	25
		Administrative Staff	26
		Training Section	29
		Internal affairs	30
		Personnel Distribution	31
		Personnel Data	32
		Age of Sworn Graph	33
		Years of Service Graph	34
Part III	-	Field Operations	
		Field Operations Organization	35
		Field Operations Achievements	36
		Manpower Allocation Reports	37
		Harbor Patrol	39
		Hit-Skip Unit	39
		Commercial Vehicle Enforcement	40
		Traffic Statistics	41

TABLE OF CONTENTS

Part IV -

Investigative Services

Investigative Services Organization	43
Investigative Services Achievements	44
Crime Stopper Program	46
Vice/Metro & Youth Services	47
Crimes Against Persons	48
Crimes Against Property	50

Part V -

Support Services

Support Services Organization	53
Support Services Achievements	54
Communications and Community Affairs	55
Calls For Service	56
Community Affairs Section	57
Records Section	58
Forensic Lab	59
Property Management	60

Part VI -

Uniform Crime Report Data

Total UCR Charts	61
Murder & Aggravated Assault	62
Rape & Robbery	63
Burglary & Auto Theft	64

CITY OF TOLEDO OHIO



THOMAS R. HOOVER
City Manager

JOHN ALEXANDER
Safety Director

DIVISION OF POLICE
SAFETY BUILDING
525 N. ERIE STREET
TOLEDO, OHIO 43624-1345

MARTI D. FELKER
Chief of Police
(419) 245-3200
(FAX) 245-3228

March 15, 1993

TO: Thomas R. Hoover, City Manager

THROUGH: John Alexander, Director of Public Safety

FROM: Marti D. Felker, Chief of Police

SUBJECT: 1992 Annual Report of the Toledo Police Division

I am proud to present the Toledo Police Division 1992 Annual Report for your review and consideration.

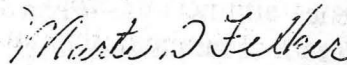
Highlights of this reporting period include:

- * Participation in the "Strategic Planning Process" which has yielded a comprehensive four year plan for this Division.
- * Appointment of the 45th Academy Class.
- * Successful completion of several on-going major investigations especially, the "Chop Shop" apprehension which netted over 3 million dollars in recovered vehicles and parts, and the "Marielito" indictments of members of a Cuban organized crime network that had been operating in the Toledo area.
- * Continued improvement in community support of the Police Division as indicated by increased membership in "Blockwatch Program", cooperation in operation "CODE", participation in Division's Chaplain program, and continued decline in reported citizen complaints.

I look forward to the coming year with great optimism and continued confidence that Division personnel will demonstrate a professional dedication that capitalizes on previous successes.

We have incorporated within our four-year-plan several objectives, which when accomplished will significantly improve our capability to deliver improved services to our citizens. In addition, we hope to expand those activities which support an effective "Community Policing" philosophy during 1993.

Respectfully submitted,



Marti D. Felker
Chief of Police

MDF:pjw

LAW ENFORCEMENT CODE OF ETHICS

As a law enforcement officer, my fundamental duty is to serve mankind; to safeguard lives and property; to protect the innocent against deception; the weak against oppression or intimidation, and the peaceful against violence or disorder; and to respect the constitutional rights of all persons to liberty, equality, and justice.

I will keep my private life unsullied as an example to all; maintain courageous calm in the face of danger, scorn or ridicule; develop self-restraint; and be constantly mindful of the welfare of others. Honest in thought and deed in both my personal and official life, I will be exemplary in obeying the laws of the land and regulations of my department. Whatever I see or hear of a confidential nature or that is confided to me in my official capacity will be kept ever secret unless revelation is necessary in the performance of my duty.

I will never act officiously or permit personal feelings, prejudices, animosities or friendship to influence my decisions, with no compromise for crime and with relentless prosecution of criminals. I will enforce the law courteously and appropriately without fear or favor, malice or ill will, never employing unnecessary force or violence and never accepting gratuities. I recognize the badge of my office as a symbol of public faith, and I accept it as a public trust to be held so long as I am true to the ethics of the Police Service. I will constantly strive to achieve these objectives and ideals, dedicating myself before God and my chosen profession:

- Law Enforcement.



The organizational chart for Toledo City Government shows a hierarchy starting with the Mayor at the top. Below the Mayor are several departments, including the Department of Public Safety, which oversees the Toledo Police Division. Other departments include the Department of Public Works, the Department of Finance, and the Department of Community Development. The chart also shows various advisory boards and commissions.

TOLEDO CITY GOVERNMENT

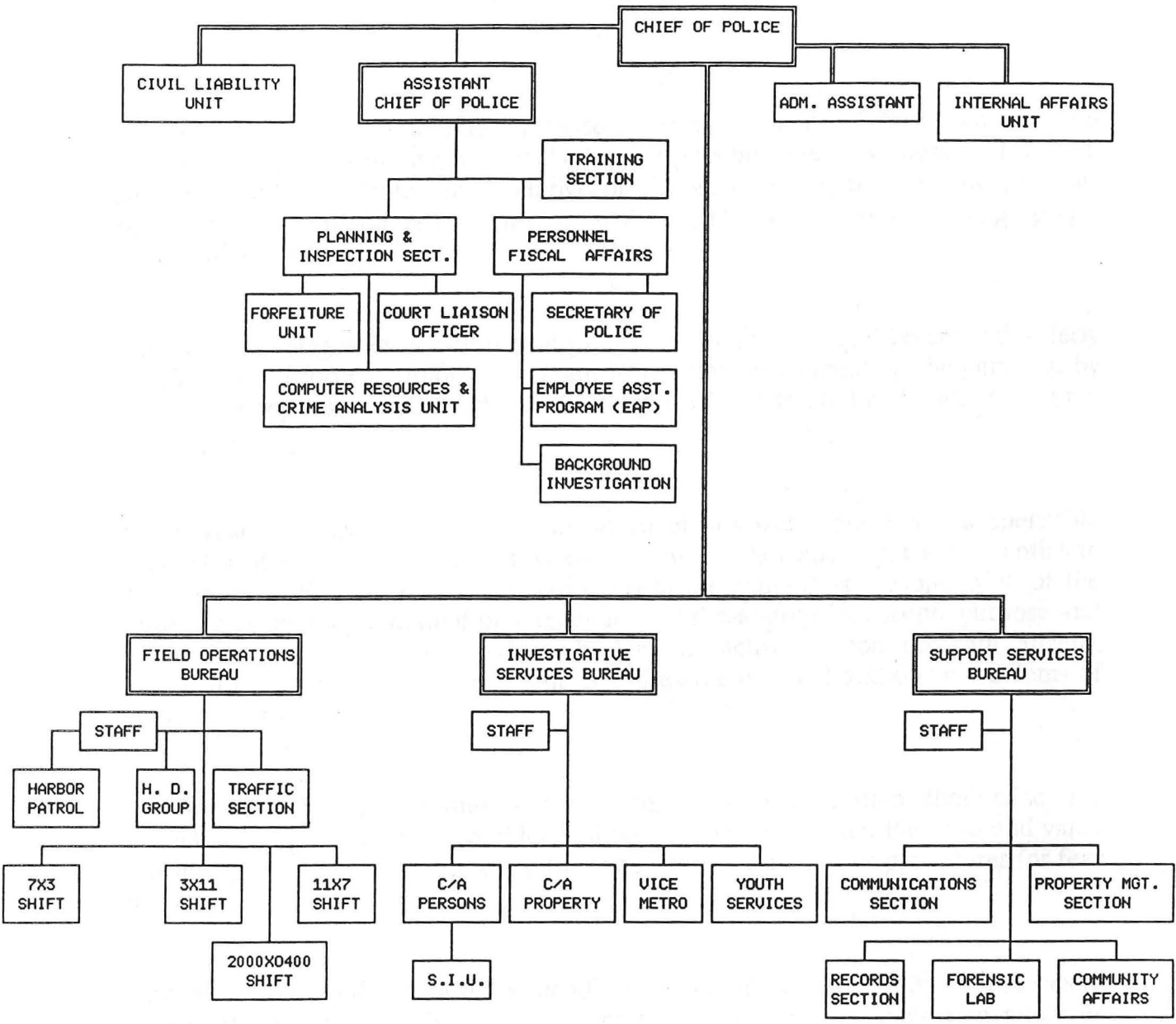
Toledo is the fourth largest city in Ohio and ranks 45th in the nation. Toledo, Ohio is the seat of Lucas County. Located on the western shore of Lake Erie, it is the major trading center for 14 counties in Northwestern Ohio and Southeastern Michigan. The 1990 census put Toledo's population at 332,900. It is 86 square miles. Known as the "*Glass Capitol of the World*," and the home of the famous "*Jeep*" vehicles, Toledo is one of the nation's most important distribution centers.

Toledo operates under a *Council-Manager* form of government. The nine member City Council is comprised of eight at-large members and the Mayor. All nine members are elected directly by voters. The City Manager is the administrative head of Toledo city government and discharges the directives of Council.

The Toledo Police Division functions under the administrative control of the Chief of Police. Organizationally, the Police Division is within the Department of Public Safety. The Department's chief executive officer is the Director of Public Safety. The Division motto is:

TO PROTECT AND SERVE

TOLEDO POLICE DIVISION
ORGANIZATIONAL CHART
(DEC 1992)



MISSION STATEMENT

The Toledo Police Division exists to serve every segment of the community by providing continuous protection and the highest possible level of professional service. As a constantly available representative of city government, the Division provides response to citizen requests for public services through courteous and appropriate action, advice or referral.

The Division safeguards constitutional guarantees by assuring that lawful and orderly activities may proceed without disruption from criminal elements or be curtailed by unlawful or repressive police action. All persons will be treated with fairness, dignity and respect.

The Division recognizes that citizen involvement in government is an indispensable ingredient of a free society, and that community interest and input are essential to effective law enforcement. The Division seeks the support and cooperation of the public by developing a mutual understanding of the appropriate scope, purpose and role of law enforcement in Toledo. The Division actively cooperates with citizens, organizations and units of government in addressing criminal and other problems of community interest.

The Division is flexible and innovative in attempts to find improved methods of serving the public and alleviating the problems of the community. When the need and value become apparent, it will not hesitate to try new roles, programs or procedures for fear of failure.

Through prudent and responsible expenditure of allotted funds, the Division strives to provide the necessary training, equipment and administrative support to allow its officers and employees to deliver the highest degree of professional police service possible.

By constantly monitoring the quality of its services, the Division recognizes outstanding performance by its members and takes proper steps to correct and eliminate substandard or otherwise inappropriate performance.

DIVISION GOALS

The goals of the Toledo Police Division are:

- * To deter crime and create a sense of public well being and security through constant visible presence and availability.
- * To reduce the opportunity for, and instances of, criminal activity and public nuisance through the consistent proactive and reactive enforcement of laws and ordinances.
- * To apprehend and assist in the prosecution of law violators through investigation, intelligence gathering and the collection, preservation and presentation of evidence.
- * To safeguard, identify and return to its rightful owner, whenever possible, property coming into possession of the Division.
- * To facilitate the safe, expeditious flow of vehicular and pedestrian traffic through public education, enforcement of traffic laws, accident investigation and traffic control.
- * To abate potentially violent confrontations and preserve individual rights through tactful mediation, informed advice, and preventive presence, whenever possible, and through enforcement of laws when necessary.
- * To aid persons in need of assistance through the use of Division resources or through knowledgeable referral to other suitable agencies, as is appropriate.
- * To respond to changes in community needs, legislative and judicial mandates, criminal trends and technological advances through research, planning and implementation of new and innovative policies, practices and procedures.
- * To achieve and maintain a high degree of police - community interaction, respect and cooperation through education, dialogue, information sharing and responsiveness.
- * To maintain a superior level of organizational and individual performance through the hiring of qualified persons, training and ongoing management and supervisory control and review of police activities.
- * To provide for the safety and well being of its employees through appropriate training, equipment and supply acquisition, and administrative and technical support.

HISTORY OF THE TOLEDO POLICE DIVISION

1836

The City of Toledo was incorporated by an act of the State Legislature.

1837

The first City Charter was adopted. Calvin Comstock was appointed as the first City Marshall. Prior to that, justice was administered by the Justice of the Peace and his constables.

1840-1850

The population of the City rose from 1,220 to 3,827.

1852

A volunteer police force was authorized by the City Council with the same police powers as the City Marshall.

1853

By Council Resolution, the "night watch" was initiated with a watchman for each of the four wards to patrol only during the night. The mayor had the right to appoint and regulate as he deemed necessary, with the advice of Council. The City Marshall was designated as the Captain of the Night Watch.

1865

The City Marshall was made a part of the Police Board. City Council Resolution stated, "If the Police Board shall deem it necessary at anytime, they may detail one or more of the police of the city to serve as Day Patrolman." This was the first time authorization had been given for a daytime police officer.

1867

Because of the increase in population (20,000), Toledo advanced to a City of the First Class in grade, and was invested with a local municipal government, including a Metropolitan Police Force. The Clerk of Council was instructed to begin paying salaries to police officers. Previously, any pay which the police had collected was through private contributions. Needless to say, those who contributed the most were accustomed to receiving the most protection. Thus, the City Marshall and the volunteer police force was deposed. Three Police Commissioners were selected. Henry Breed was named Captain (*Chief*) of Police, and thirteen policemen were hired, as well as a Sergeant and Turnkey. Each patrolman was paid \$720 annually. The total annual budget was \$21,980, which included equipment maintenance, all salaries, and the upkeep of the prisoners in the City Jail. Patrolmen were assigned to work fourteen hours on the Day Shift, and ten hours on the night shift, seven days a week.

The first Detective, Elijah Hanks, was officially appointed. The Chain Gang was abolished in Toledo, and the first In-Service Training was offered. The training, which involved the reading of the Department Rules and Regulations, was conducted at least once a week by the Captain.

1869

Henry Nellis, who was found sleeping on duty, became the first officer to be fired from the Toledo Police Force.

1871

Two *Sanitary Police* were appointed. Their duties consisted on fumigating homes where needed, and enforcing quarantines.

1874

By City Ordinance, the title of *Superintendent of Police* was changed to *Chief of Police*. The work hours for the officers was shortened to approximately 12 hours for the day shift, and 10 hours for the night shift. The rank of *Roundsman* was established with the duty of going to each District Beat and making sure that the assigned beatman was there, and to collect any information the beatman may have. This was the only means of communication between headquarters and the street officer.

1879

The limited use of photographs was initiated for criminal identifications.

1880

The First Metropolitan Board was instituted, with the local board members selected by the Governor. Subsequently, the members were elected by the public for four year terms.

The rank of *Detective* was permanently established by the Board of Police Commissioners. The City allowed for the appointment of a maximum of ten officers to the rank of Detective. William Scott became the first Chief of Police under the Metropolitan System.

1882

The City adopted the *Bertillion System* of measurements, as well as the *Scar and Mark System* for criminal identification. The Bertillion System involved the measuring of almost every part of the body, including the circumference of the head, the total span of the arms, etc. The Scar and Mark System involved the detailed listing of any scar or mark on a prisoner's body.

1883

The first patrol wagon (*horse and buggy*) was purchased to be used for the transportation of prisoners. Previously, all prisoners had to be walked to the station for booking, which often became a problem dealing with highly intoxicated persons. One industrious officer solved this problem by borrowing a wheelbarrow for these situations.

1890

The City began to install over 100 alarm boxes in various neighborhoods through which the beat officers could be summoned.

1898

A police substation was opened at 612 Lagrange Street. Headquarters remained located at 20 North Superior Street.

1899

The City's population increased to 115,674, necessitating the assignment of an officer to traffic duty at the Summit and Cherry Streets intersection.

1900

Toledo now encompassed 28 square miles and employed 100 patrolmen, 11 command officers, and three Detectives. The City had two prisoner wagons; one at each station.

1903

With the increased use of photographs, the Police Department established a *Rogues Gallery*, and began to do away with the Bertillion System of Identification.

1905

The use of fingerprinting was adopted for identification purposes.

1907

The City purchased its first motorcycles for use by officers. At first, they were used only for emergency reasons. Reports indicated that two detectives, assigned to nights, were dispatched to the scene of a burglary-in-progress on their motorcycles. After apprehending the burglars, they did not wish to waste time waiting for the horse and buggy wagon, so they drove the prisoners back to the station on the handlebars of the motorcycles, at speeds up to 50mph.

1908

The Toledo Police Department adopted a mounted horse unit. Each officer assigned to the Mounted Unit was required to care for his horse, which included feeding, cleaning, and grooming. The Mounted Unit remained operational until 1928.

1911

The Police Department added a full Motorcycle Squad, consisting of 20 officers.

1919

The position of *Turnkey* was filled with a sworn police officer, rather than a civilian. The first Police Woman was assigned with the duty of watching dance halls and other places of public amusement, as well as handling certain cases involving women. The remainder of her time was spent on patrol.

1924

The Toledo Police Pistol Range was dedicated. The range was built by members of the Department and was reported to be one of the finest ranges in the Country, if not the World. It was estimated at the time to have been worth \$100,000 however, the total construction cost was a mere \$5.60. Most of the materials were donated, and the labor was performed by the officers themselves.

1925

The Police Department moved from the 80 year old structure on Superior Street to the newly built, *Safety Building* at 525 North Erie Street, where the Division is currently housed.

1926

The *Women's Bureau* was formed to handle cases of missing girls and women, and any other cases involving females. Sergeant Margaret Slater headed the Unit for 29 years. Harold Towe, a professor at the University of Toledo, wrote in his history of the police department, "*It must be said that the Women's Bureau has, from its inception, been an honest to goodness police unit, making its own investigations, check-ups, and arrests. They have been Police Officers, not social workers.*"

Harry Jennings, Chief of Police, instituted the concept of probation in the courts by establishing the *Reclaiming and Probation Division* within the Police Department. Police Officers assigned to the Division, first interviewed offenders prior to their court appearance, after which a recommendation was made to the Court. If the offender was released, the officer worked closely with him for approximately six months.

1928

The memorial monument for police officers killed in the line of duty was dedicated. It was said to be the only memorial in the Country conceived and built by police officers, and was regarded as a fine work of art and architecture.

1930

The Department inaugurated radio communications with the installation of two way radios in all police vehicles. It began broadcasting on station *WRDQ*.

1932

The first police school was instituted with private, qualified citizens donating their time and expertise. The first class lasted eight weeks. The Identification Bureau, which previously was operational only during the day shift, began remaining open during evening hours.

1934

With the establishment of a school for traffic violators, whose instructors were police officers, a judge now had the options of ordering traffic violators to attend the school to improve their basic driving skills.

1937

The *Crime Laboratory* was established. Limited scientific and chemical analyses were previously conducted at the University of Toledo.

With the establishment of the *Juvenile Bureau*, the Division began expanding its responsibilities into the realm of prevention, which was consistent with the changing concept of law enforcement.

An *Accident Investigation Squad* was also established in this year. There were 900 automobile accidents in the City during 1937.

1938

The *Toledo Police Academy* was initiated and graduated its first class.

1940

Nine policemen began flight training to become *Policemen of the Air*, as soon as the Department received its first airplane.

1948

McCarthy Stadium in Highland Park was dedicated to Lt. John McCarthy, who was killed in the line of duty on January 7, 1947. His name, along with the 21 officers who predeceased him, were commemorated on a plaque at the Stadium.

1949

Radar was adopted by the Department for use in traffic enforcement.

1952

A Police Library was begun, under the guidance of Inspector Roth of the Police Academy.

A *Harbor Patrol Unit* became operational on a part time basis, with a borrowed boat.

1953

Due to a high injury rate, the two-wheel Motorcycle Squad was abolished.

1955

The City was given a retired U.S. Coast Guard boat to enforce the water law in the Toledo area. This was the beginning of a full-time Harbor Patrol.

1958

The police work week was reduced from 48 to 44 hours, which remained in effect until 1960, when it was reduced to a 40 hour work week.

1960

The uniform was modified by adding shoulder patches and changing from the traditional eight point, blue hat to a white trimmed hat.

1963

Due to major annexation in the metropolitan area, police patrol responsibility increased to 76.8 square miles, and the population increased to over 370,000 residents. In less than two years, the City had grown over 19 square miles. The police budget was \$3.3 million.

1964

Patrol districts were reorganized from 17 basic beats to 20. In addition, the Police Division initiated an 8:00pm - 4:00am *Selective Enforcement* shift to supplement district patrol units.

The *Police Auto Pound* discontinued operations, and a private garage was authorized to take over the storage of vehicle in police custody.

1966

The Division began using portable *Walkie-Talkie* radios, with a great deal of success.

1970

Officer William Miscannon was fatally shot at the corner of Junction and Dorr Streets on September 18.

1973

The first female was graduated from the Toledo Police Academy with the rank of *Patrolman*. The Division adopted the *One-Man Patrol Unit* concept.

1974

Air-conditioning was placed into marked police vehicles for the first time.

1976

The *Scott Park District Station* was opened, thus becoming the first substation since 1925.

1977

The Division closed the men's and women's jail facilities in the Safety Building, and began booking prisoners at the newly built, Lucas County Corrections Center. This ended a 140 year era, which began in 1837, of the Police Division housing its own prisoners.

1980

All Field Operations and Investigative functions were removed from the Scott Park District Station, thereby returning the Division to a centralization of line operations. The Scott Park facility began housing the Community Relations and Crime Prevention Sections.

1982

Due to severe fiscal problems facing the City, nearly all civilian police employees were laid off. Many returned to their jobs later in the year after the passage of a payroll income tax.

1984

Due to increased resources resulting from economic growth and increased municipal tax revenues, the Division restored all services to the public. Manpower was brought up to its authorized strength of 725; the first time since 1978. The Police Academy graduated the largest class in its history -- 121.

Beat patrol officers returned to the revitalized downtown area; particularly Portside, the downtown marketplace.

1985

City Council approved an increase in the Division's authorized strength of 25 officers, thereby raising the strength to 750; the highest strength since 1977, when it was reduced to 725. The Division's records keeping responsibility was computerized. Redistricting took place, doing away with the basic 22 districts and replacing them with a flexibeat system, consisting of 7 primary sectors with numerous beats within each. The traditional 2 or 3 digit call numbers were replaced with a number-letter combination, such as 3-D-14.

Chief John Mason authorized the implementation of a Mounted Patrol Unit in March 1986. Two Sergeants and nine Patrol Officers were selected to undergo training at the Detroit Mounted Police Stables.

1986

The *Mounted Patrol Unit* began operation on March 3, 1986, and instantly became a success with the public. The officers in the unit are the first horse-back officers in Toledo since 1928.

1987

On August 26th, Marti D. Felker was appointed Chief of Police, succeeding John Mason, who retired in June.

1988

January, the *Forfeiture Unit*, whose primary responsibility is to institute civil forfeiture proceedings against individuals who use or derive personal assets during the course of criminal conduct, became fully operational.

The Mounted Patrol Unit established its stable facility in the building at 1820 N. 12th; site of the former Sealtest Dairy garage.

On January 18th the Division returned to the blue hat as part of the official uniform.

1989

On March 21st City Council raised the Division's authorized strength from 750 to 775.

In October, the Division began the first phase of its transition from the traditionally issued 38 caliber revolver to the 9mm automatic pistol. Vice-Metro and Directed Patrol Officers were the first to receive the week long training in the use of the weapon. Complete transition to the 9mm pistol is expected to occur by February 1991.

1990

The Division's completely automated, indoor range was dedicated on September 26, 1990.

The Forty-Fourth academy class was sworn in on December 14, 1990.

1991

After five and a half years of operation, the Division's Mounted Patrol Unit was disbanded as part of several cost cutting measures. The Division also cut the Harbor Patrol Unit down to one boat.

The Division's remodeled Communications Center at 550 N. Erie Street was opened in conjunction with a new 800 MHz radio system. The new system, Call Letters **WNCE-682**, was designed to interface with the E-9-1-1 Computer Aided Dispatch system.

1992

The Division's Forty-Fifth Police Class, comprised of sixty-one recruits, was hired October 23, 1992.

Chief Felker instituted the Police Chaplin Program.

POLICE CHIEFS - PAST AND PRESENT

Henry Breed	1867 - 1868
William P. Scott	1868 - 1871
Joseph A. Parker	1879 - 1881
Josiah C. Purdy	1872 - 1879 1883 - 1885
Egbert E. Morse	1881 - 1882
General James Blair Steedman	1882 - 1883
Edward O'Dwyer	1885 - 1892
Benjamin F. Raitz	1892 - 1902
Perry D. Knapp	1902 - 1914
George A. Murphy	1914 - 1915
Henry J. Herbert	1915 - 1922
Harry Jennings	1922 - 1928
Louis J. Haas	1928 - 1932 1932 - 1933
William D. Delehanty	Feb. 1932 Mar. 1932
Daniel T. Wolfe	1933 - 1936
Ray E. Allen Sr.	1936 - 1956
Anthony A. Bosch	1956 - 1970
Robert J. Duck	1970 - 1974
Corrin J. McGrath	1974 - 1978
Walter Scoble	1978 - 1980
John W. Mason	1980 - 1987
Marti D. Felker	1987 - Present

DIVISION SERVICE AWARDS - 1992

Distinguished Service Award

"The Division's second highest Award"
Awarded for individual acts of heroism

Officer Ella Friesel
Officer Sandra Miller

Medal of Meritorious Service

"For service beyond what is normally expected"

Officer Steven Applin
Officer Cherie Bryce
Officer Paul Byersmith
Officer Peggy Hymore
Captain Terry Schroeder
Officer James Scott
Officer Bennie Smith
Sergeant Brad Weis

Professional Service Award

"For an Officer who has maintained a
continuous record of exceptional performance."

Officer Earl Barry
Lieutenant Henry Hiris
Officer Bernard Moss
Captain Michael Schroeder
Officer Bruce Simon
Sergeant Richard Zaborowski

Sergeant James Bryan
Deputy Chief Ronald Jackson
Detective Ronald Scanlon
Detective Peter Sifuentes
Officer Thomas Winterhalter

Civilian Recipients

Pamela Fall - Stenographer
Thelma Woods - Clerk

OFFICERS KILLED IN THE LINE OF DUTY

Officer John Hassett - March 5, 1880

* *Killed by falling debris during tornado.*

Officer Charles Russell - October 9, 1906

* *Shot by unknown suspect - details unknown.*

Sergeant James Boyle - May 5, 1908

* *Shot at Lafayette and Erie Streets by a burglary suspect.*

Officer Harry Smith - September 25, 1911

* *Shot while responding to a burglary call near Monroe and Bancroft.*

Officer Albert Schultz - August 7, 1914

* *Shot on Englewood Court by a burglary suspect.*

Detective Kaiser Bartecki - January 21, 1915

* *Shot at 300 Kosciusko responding to a domestic dispute call.*

Officer Adolph Reimer - August 25, 1915

* *Shot at 300 Woodland during landlord/tenant dispute.*

Officer Louis Jaswiecki - March 31, 1918

* *Shot at unknown location by two robbery suspects.*

Officer William Bather - May 27, 1919

* *Shot at City Park and Curtis by robbery suspects.*

Officer George Zapf - September 23, 1919

* *Killed in a motorcycle accident at Superior and Madison.*

Officer Harry Dowell - June 9, 1921

* *Shot at 611 Walnut in a landlord/tenant dispute.*

Officer Harold Mossburger - June 9, 1921

* *Shot at 611 Walnut in a landlord/tenant dispute.*

Officer William H. Kress - August 1, 1921

Shot on Canton Avenue while questioning suspects.

Lieutenant William J. Martin - September 6, 1921

* *Shot at Fulton and Prescott by an auto theft suspect.*

Officer Charles McGuire - December 22, 1921

* *Shot at Indiana and Division by an unknown suspect.*

OFFICERS KILLED IN THE LINE OF DUTY

Officer William A. Reed - December 28, 1921

* *Shot on Canton Avenue while questioning a suspect.*

Officer Fritz Bacon - August 13, 1922

* *Struck by motor vehicle at Front and Main Streets.*

Detective William Julert - January 29, 1924

* *Shot while disarming a suspect.*

Officer Walter Mullin - May 12, 1925

* *Shot while pursuing a prowler at Bennett and Clarence.*

Officer George Zientara - April 16, 1928

* *Shot at 2304 Upton by robbery suspects.*

Officer Edward O'Briest - May 19, 1931

* *Shot at 300 Moorish while working an undercover assignment.*

Officer Edward Keim - August 11, 1932

* *Shot at Indiana and Heston during a robbery/kidnapping.*

Officer Harvey O'Neil - November 8, 1936

* *Killed at Bancroft and Monroe Streets in a motorcycle accident.*

Officer Fred W. Disel - May 5, 1944

* *Killed at Adams and Erie Streets in a motorcycle accident.*

Detective Lt. John McCarthy - January 7, 1947

* *Shot at 600 Jackson while transporting prisoners.*

Officer Harold Stevens - July 3, 1948

* *Killed at Monroe and 17th Streets in an auto accident.*

Officer Albert Fadell - November 18, 1948

* *Killed at Canton and Beacon Streets in a motorcycle accident.*

Officer Walter Boyle - December 8, 1961

* *Shot while serving an arrest warrant on Walden Street.*

Officer Donald Brown - June 12, 1962

* *Shot on N. 14th Street during a domestic quarrel.*

Officer William Miscannon - September 18, 1970

* *Shot while sitting in a patrol wagon at Dorr and Junction Streets.*

1992 RETIREMENTS

Captain Larry D. Armstrong

Appointed October 4, 1963
Retired January 2, 1992

Officer Glen Hammer

Appointed June 2, 1972
Retired January 30, 1992

Officer Alfred J. Lee

Appointed October 1, 1958
Retired January 16, 1992

Officer John B. Stanko

Appointed March 31, 1973
Retired February 6, 1992

Officer Thomas K. Piasecki

Appointed May 15, 1964
Retired January 16, 1992

Officer Robert B. Barker

Appointed July 1, 1969
Retired February 13, 1992

Officer James E. Fugate

Appointed October 16, 1964
Retired January 16, 1992

Sergeant Louis J. Fitch

Appointed April 1, 1962
Retired February 27, 1992

Officer Harold B. Dobson

Appointed October 1, 1965
Retired January 16, 1992

Officer Edward A. Grubinski

Appointed November 1, 1959
Retired March 26, 1992

Officer Thomas C. Dumas

Appointed October 14, 1963
Retired January 30, 1992

Officer Charles W. Kellar

Appointed September 1, 1967
Retired March 26, 1992

Officer Paul E. Byersmith

Appointed January 13, 1967
Retired January 30, 1992

Officer Robert V. Oberdorf

Appointed October 4, 1963
Retired March 26, 1992

Officer Joseph M. Bush

Appointed January 13, 1967
Retired January 30, 1992

Officer Thomas E. Flannagan

Appointed April 1, 1968
Retired March 31, 1992

Officer Charles C. Beck

Appointed October 1, 1965
Retired January 30, 1992

Officer Thomas D. Gonia

Appointed April 1, 1968
Retired April 8, 1992

Officer Roy O. Gonia Jr.

Appointed April 1, 1965
Retired January 30, 1992

Officer Judy Lee Sallah

Appointed September 25, 1987
Resigned April 16, 1992

1992 RETIREMENTS

Officer Gale M. Karam

Appointed January 13, 1967
Retired April 23, 1992

Officer James H. Daniel

Appointed September 1, 1967
Retired August 10, 1992

Sergeant James A. Brunt

Appointed September 1, 1967
Retired April 30, 1992

Officer James L. Sneed

Appointed April 1, 1968
Retired August 19, 1992

Officer Diane K. Stephens

Appointed September 9, 1983
Resigned May 11, 1992

Officer Robert A. Poiry

Appointed April 1, 1963
Retired August 27, 1992

Officer Henry H. Lawson

Appointed March 30, 1973
Retired May 15, 1992

Officer Richard E. Pierce

Appointed July 12, 1977
Retired September 3, 1992

Officer Arthur L. Walker

Appointed April 1, 1965
Retired May 21, 1992

Deputy Chief Ronald Jackson

Appointed September 1, 1967
Retired October 12, 1992

Officer Peter Sifuentes

Appointed January 13, 1967
Retired May 21, 1992

Officer Eugene Brownfield

Appointed July 1, 1969
Retired October 12, 1992

Officer Robert W. Ellis

Appointed July 12, 1977
Retired June 8, 1992

Lieutenant Richard Achter

Appointed November 1, 1959
Retired December 18, 1992

Sergeant James M. Kaczmarek

Appointed April 1, 1965
Retired June 18, 1992

Officer Donna M. Meyers

Appointed September 7, 1984
Retired December 23, 1992

Officer Carl K. Metoff

Appointed January 13, 1967
Retired July 2, 1992

Officer John D. Wernert

Appointed May 15, 1964
Retired July 2, 1992

Command Officer Recognition Program

1992 Recipients

Command Officer of the Year Sergeant Jerry Hughes

January 1992

Sergeant Jerry Hughes

July 1992

Sergeant Randal Pepitone

February 1992

Lieutenant Louise Eggert

August 1992

Sergeant Daniel Schultz Jr.

March 1992

Sergeant Oscar Morales

September 1992

Sergeant David Schmidt

April 1992

Sergeant Leland Pakusch

October 1992

Sergeant Carl M. Latscha

May 1992

Lieutenant Jeffrey Hennessey

November 1992

Sergeant James Jones

June 1992

Sergeant Robert Case

December 1992

Sergeant Daniel Schultz Sr.

Patrol Officer Recognition Program

1992 Recipients

Patrol Officer of the Year Detective Chad Culpert

January 1992

Officer Frank Armstead

July 1992

Officer Eugene Brownfield

February 1992

Detective Chad Culpert

August 1992

Officer Patrick Gladieux

March 1992

Officer Carl Brywczyński

September 1992

Officer Mark Gant

April 1992

Detective Philip Kulakoski

October 1992

Detective James Carnes

May 1992

Officer Richard Mendieta

November 1992

Officer Norbert Widman

June 1992

Detective Michael Awls

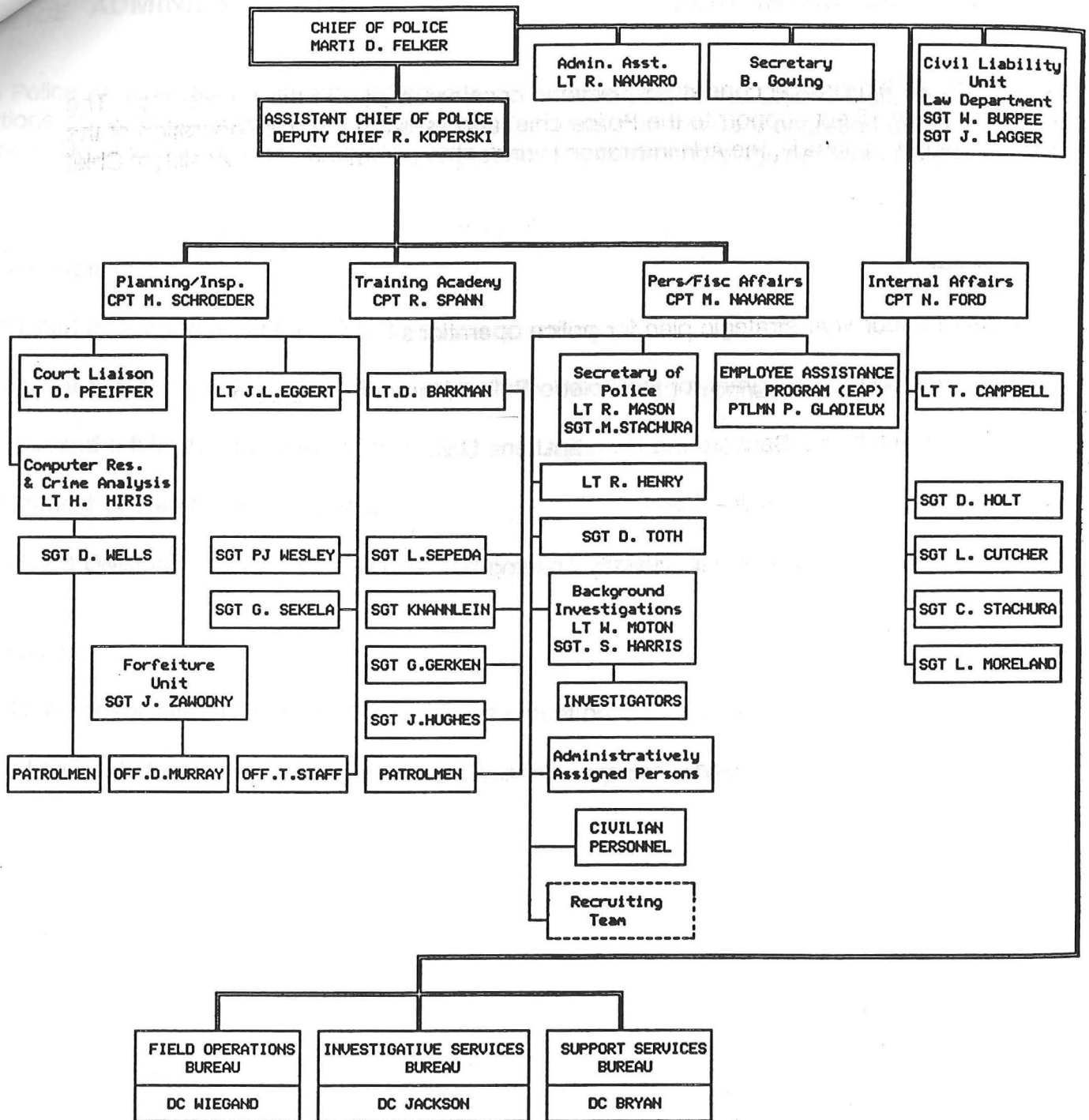
December 1992

Officer David A. Smith

A
d
m
i
n
i
s
t
r
a
t
i
o
n

1992

ADMINISTRATION
(As of: DEC 1992)



POLICE ADMINISTRATION

The Police Administration consists of Sections considered part of the Chief's Staff. The Sections act as direct support to the Police chief and assist in the daily operation of the Division. Organizationally, the Administration is under the command of the Assistant Chief of Police.

Achievements

Completed a four year strategic plan for police operations.

Obtained a \$7500 federal grant for the Toledo Police Mentoring Program.

Implemented a full time Background Investigations Unit.

Appointment of the 45th Police Class.

Completed Division-wide Cultural Diversity Training.

Set Backs

Unable to consolidate the Training Section in one location.

Lack of available funding to further enhance Division computerization.

ADMINISTRATIVE STAFF

ADMINISTRATIVE ASSISTANT

The Administrative Assistant to the Chief of Police has many responsibilities in representing the Office of the Chief. He represents the Chief at meetings and meets with neighborhood groups regarding specific problems in the community. In addition, he screens and responds to citizen complaints and inquiries which are directed to the Chief's Office, as well as those emanating from other city agencies, the Mayor's Office, the City Manager's Office, and individual councilmen. Other duties include functioning as the Chairman of the Awards Committee and coordination of the outside employment (*off duty*) requests made by sworn personnel.

CIVIL LIABILITY INVESTIGATION UNIT

This Unit is the investigative arm of the Law Department; facilitating the adequate preparation of a complete and effective defense in civil cases filed against the City of Toledo. It provides the City with a means for an early and effective investigative involvement in tort liability matters, thus safeguarding and preserving information and evidence necessary in defending a lawsuit.

PLANNING and INSPECTIONS SECTION

As its title implies, this section has dual responsibilities. The first part of its name "Planning" has been shortened from planning and research. This is the function of researching new ideas, methodologies, and equipment, as well as aiding in the development of long term projects such as grants. Programs are developed and forwarded with recommendations to the Chief of Police. An additional area of responsibility is the formalization of Division policy and procedures through the Division Manual and various written orders.

The second area of responsibility is that of conducting formal staff inspections to determine if Division policies, procedures, and rules are being adhered to by all Division members. It also provides for the evaluation of systems and resources to insure their utilization to maximum efficiency within the guidelines established by Division policy. When deviation are discovered, their causes are sought and recommendations for corrective action are made. A final aspect of the Section's responsibilities is that of serving as liaison between the Division and the Municipal and Common Pleas Courts to solve problems which arise. The Court Unit reviews all preceses to prevent duplication of testimony; attends pre-trials to assure that only the necessary officers are summoned; and, monitors the courtrooms to assist and supervise those officers appearing in court.

FORFEITURE UNIT

The Unit's primary purpose is to institute civil forfeiture proceedings, in conjunction with the Lucas County Prosecutor's Office, against individuals who use or derive personal assets during the course of criminal conduct.

CRIME ANALYSIS UNIT

The Crime Analysis Unit provides the Division with a comprehensive computer analysis of Part I and Part II criminal offenses. By gathering, analyzing, storing, and disseminating information to patrol units, the appropriate police action can be taken to reduce or eliminate specific criminal activities in problem areas.

EMPLOYEE ASSISTANCE PROGRAM

The Toledo Police Division's Employee Assistance Program assists Division employees, as well as the members of their families, in resolving or attempting to resolve alcohol, emotional, marital, or other problems that may be contributing to, or causing declining employee job performance. In assessing problem situations with an employee, the Program's Officer appropriately refers the individual to a suitable community resource for treatment. The EAP Officer also carefully screens, becomes familiar with, and maintains a working relationship with people working in many diverse community treatment programs in order to be able to make referrals. The Employee Assistance Program is also responsible for developing training programs for the same target population, aimed at such areas as life style management, stress management, marriage strengthening, alcoholism, and others.

INTERNAL AFFAIRS UNIT

The Internal Affairs Unit investigates, coordinates and/or exercises staff supervision on behalf of the Chief of Police with respect to complaints against, or allegations of misconduct against Division members. It has the responsibility of presenting all evidence obtained during such investigations, particularly when disciplinary hearings result from the investigations.

COMPUTER RESOURCES UNIT

The Computer Resources Unit is responsible for all aspects of computer usage within the Division of Police. It acts as a liaison to all of the various agencies providing computer services; it reviews all equipment purchases and upgrades; it coordinates computer training and assists Division personnel with computing problems; and it supervises all computer system installations.

PERSONNEL and FISCAL AFFAIRS SECTION

This Section prepares and administers the Division's budget, as well as controlling and coordinating the purchasing of all equipment and supplies for the Division. It is responsible for the payroll function, personnel record keeping, affirmative action data, equal employment opportunity plans, and maintaining the Police Time Bank. It assists in the labor relations function, including contract negotiations, grievance response, grievance settlement, and arbitration. In addition, it is responsible for the recruitment and background investigation of new personnel.

BACKGROUND INVESTIGATIONS

The Background Investigation Unit is charged with the responsibility of investigating the character and aspects of the personal background of police applicants. The background investigation process, which includes both medical and psychological examinations, delves into an applicant's criminal and traffic history, military and credit history, previous employer records, neighbor interviews, and reference records. The Toledo Police Division's background investigation process has been described as one of the most thorough in the State of Ohio.

TRAINING SECTION

The Training Section is responsible for researching, developing, coordinating and producing training programs that teach specific skills and abilities to all levels of Division personnel. The Training Section also manages and maintains the Division's Training facilities and equipment. Additional responsibilities include career development training and liaison to the Ohio Peace Officer's Training Council.

The Training Section is the focal point for all new Division personnel and may be referred to as the Police Academy.

The 45th Toledo Police Academy Class began a twenty-two week basic training course October 23, 1992.

SUBJECT MATTER	COURSE LENGTH	ATTENDEES
9mm Transition Course	40 hours	3 Students
9mm Firearms Qualifications	8 hours	All Sworn
Accident Investigator Course	80 hours	9 Students
Human Diversity Course	8 hours	471 Students
Water Rescue	8 hours	8 Students
Night Sight Training	8 hours	300 Students
Critical Scene Management	8 hours	57 Students
Instructor Training	40 hours	21 Students

Internal Affairs Unit

The Internal Affairs Unit investigates complaints and allegations of misconduct against Division officers. This Unit is also charged with presenting the results, or evidence of such investigations whenever any disciplinary hearings occur.

ADMINISTRATIVE COMPLAINTS	1992	1991	% Change
Internal Affairs Investigations	40	32	25.0%
Investigations by Other Command	180	163	10.4%
Total	220	195	12.8%

CITIZENS COMPLAINTS	1992	1991	% Change
Internal Affairs Investigations	67	85	-21.2%
Investigations by Other Command	51	77	-33.8%
Total	118	162	-27.2%

TOTAL COMPLAINTS	1992	1991	% Change
Internal Affairs Investigations	107	117	-8.5%
Investigations by Other Command	231	240	-3.8%
Total	338	357	-5.3%

RESULTS OF INVESTIGATIONS	1992	1991	% Change
Counsellings *	n/a	37	
Verbal Reprimands	111	73	52.1%
Written Reprimands	52	49	6.1%
Suspension	24	14	71.4%
Terminations	0	2	-100.0%
Total	187	175	6.9%

* Records of counselling discontinued.

PERSONNEL DISTRIBUTION

	CHIEF	D.C.	CAPT	LT	SGT	PTLM	S/POL	CIV	December 31, 1992			December 31, 1991			CHANGE LAST 12 MONTHS		
									TOTAL SWRN	TOTAL CIV	TOTAL SEC	TOTAL SWRN	TOTAL CIV	TOTAL SEC	TOTAL SWRN	TOTAL CIV	TOTAL SEC
	1								1	1	2	1	1	2	0	0	0
		1	1						2	0	2	1	0	1	1	0	1
				1					1	0	1	1	0	1	0	0	0
Ass't			1	1	2	0	1	3	5	3	8	4	3	7	1	0	1
Recruit.			1	1	2	0			4	0	4	4	0	4	0	0	0
Inspections					1	2			3	0	3	2	0	2	1	0	1
Unit				1					1	0	1	1	0	1	0	0	0
Liaison			0	1	4				5	0	5	6	0	6	-1	0	-1
Internal Affairs				0	2				2	0	2	2	0	2	0	0	0
Liability Unit						1	3		4	0	4	2	0	2	2	0	2
Time Analysis					1	0		1	1	1	2	1	1	2	0	0	0
Computer Resources			1	1	4	7		1	13	1	14	6	1	7	7	0	7
Training				1	0	1			2	0	2	10	0	10	-8	0	-8
Background Invest.					0	1			1	0	1	1	0	1	0	0	0
AP Officer						1			1	0	1	1	0	1	0	0	0
Det at Arms/Council						1			1	0	1	1	0	1	0	0	0
Assign/Admin Purposes				0	1	2			3	0	3	3	1	4	0	-1	-1
Trainees						59			59	0	59	0	0	0	59	0	59

BUREAU TOTAL	1	1	4	8	17	76	1	6	108	6	114	46	7	53	62	-1	61
% of Sworn/Civ. Pers	0%	0%	1%	1%	2%	11%	0%	12%	16%	12%	16%	7%	15%	7%	134.8%	-14.3%	115.1%

SUPPORT SERVICES

	CHIEF	D.C.	CAPT	LT	SGT	PTLM	S/POL	CIV	TOTAL SWRN	TOTAL CIV	TOTAL SEC	TOTAL SWRN	TOTAL CIV	TOTAL SEC	TOTAL SWRN	TOTAL CIV	TOTAL SEC
Bureau Commander		1							1	0	1	1	0	1	0	0	0
Administrative Staff					0				0	0	0	1	0	1	-1	0	-1
Communications			1	1	6	32			40	0	40	37	0	37	3	0	3
Records Section			1	1	7	21		25	30	25	55	33	26	59	-3	-1	-4
Property Management			1		1	5		0	7	0	7	7	0	7	0	0	0
Forensic Laboratory								3	0	3	3	0	2	2	0	1	1
Community Affairs			1	1	3	9			14	0	14	13	0	13	1	0	1

BUREAU TOTAL	0	1	4	3	17	67	0	28	92	28	120	92	28	120	0	0	0
% of Sworn/Civ. Pers	0%	0%	1%	0%	2%	10%	0%	56%	13%	56%	16%	14%	58%	17%	0.0%	0.0%	0.0%

FIELD OPERATIONS

	CHIEF	D.C.	CAPT	LT	SGT	PTLM	S/POL	CIV	TOTAL SWRN	TOTAL CIV	TOTAL SEC	TOTAL SWRN	TOTAL CIV	TOTAL SEC	TOTAL SWRN	TOTAL CIV	TOTAL SEC
Bureau Commander		1							1	0	1	1	0	1	0	0	0
Administrative Staff			1	1	1				3	0	3	3	0	3	0	0	0
Assign/Admin Purposes				1	0	2			3	0	3	4	0	4	-1	0	-1
Harbor Patrol					1	3			4	0	4	4	0	4	0	0	0
Patrol Shift #4 7x3			1	3	12	81			97	0	97	113	0	113	-16	0	-16
Patrol Shift #5 3x11			1	4	14	93			112	0	112	125	0	125	-13	0	-13
Patrol Shift #8 8x4			0	1	5	46			52	0	52	46	0	46	6	0	6
Patrol Shift #6 11x7			1	5	11	78			95	0	95	111	0	111	-16	0	-16
Patrol Shift #12 12x8					0	0			0	0	0	0	0	0	0	0	0
Traffic Section				1	4	7		13	12	13	25	15	10	25	-3	3	0

BUREAU TOTAL	0	1	4	16	46	310	0	13	370	13	392	422	10	432	-43	3	-40
% of Sworn/Civ. Pers	0%	0%	1%	2%	7%	45%	0%	26%	55%	26%	53%	64%	21%	61%	-10.2%	30.0%	-9.3%

INVESTIGATIVE SERVICES

	CHIEF	D.C.	CAPT	LT	SGT	PTLM	S/POL	CIV	TOTAL SWRN	TOTAL CIV	TOTAL SEC	TOTAL SWRN	TOTAL CIV	TOTAL SEC	TOTAL SWRN	TOTAL CIV	TOTAL SEC
Bureau Commander		1							1	0	1	1	0	1	0	0	0
Administrative Staff				2	1	1		2	4	2	6	2	2	4	2	0	2
Spl Investigations					0	1			1	0	1	1	0	1	0	0	0
Crimes / Persons			1	1	8	26			36	0	36	33	0	33	3	0	3
Crimes / Property			1	1	3	17			22	0	22	21	0	21	1	0	1
Youth Services			1	1	2	9		1	13	1	14	16	1	17	-3	0	-3
Vice/Metro			1	2	6	19			28	0	28	30	0	30	-2	0	-2

BUREAU TOTAL	0	1	4	7	20	73	0	3	105	3	108	104	3	107	1	0	1
% of Sworn/Civ. Pers	0%	0%	1%	1%	3%	11%	0%	6%	15%	6%	15%	16%	6%	15%	1.0%	0.0%	0.9%

TOTAL DIVISION

	CHIEF	D.C.	CAPT	LT	SGT	PTLM	S/POL	CIV	TOTAL SWRN	TOTAL CIV	TOTAL SEC	TOTAL SWRN	TOTAL CIV	TOTAL SEC	TOTAL SWRN	TOTAL CIV	TOTAL SEC
Number of each rank/position in the total Division	1	4	16	34	102	526	1	50	684	50	734	664	48	712	20	2	22
% each rank/position is of the total Division personnel	0%	1%	2%	5%	14%	72%	0%	7%	93%	7%	100%	93%	7%	100%	3%	4%	3%

PERSONNEL DATA – TOLEDO POLICE DIVISION – 1992

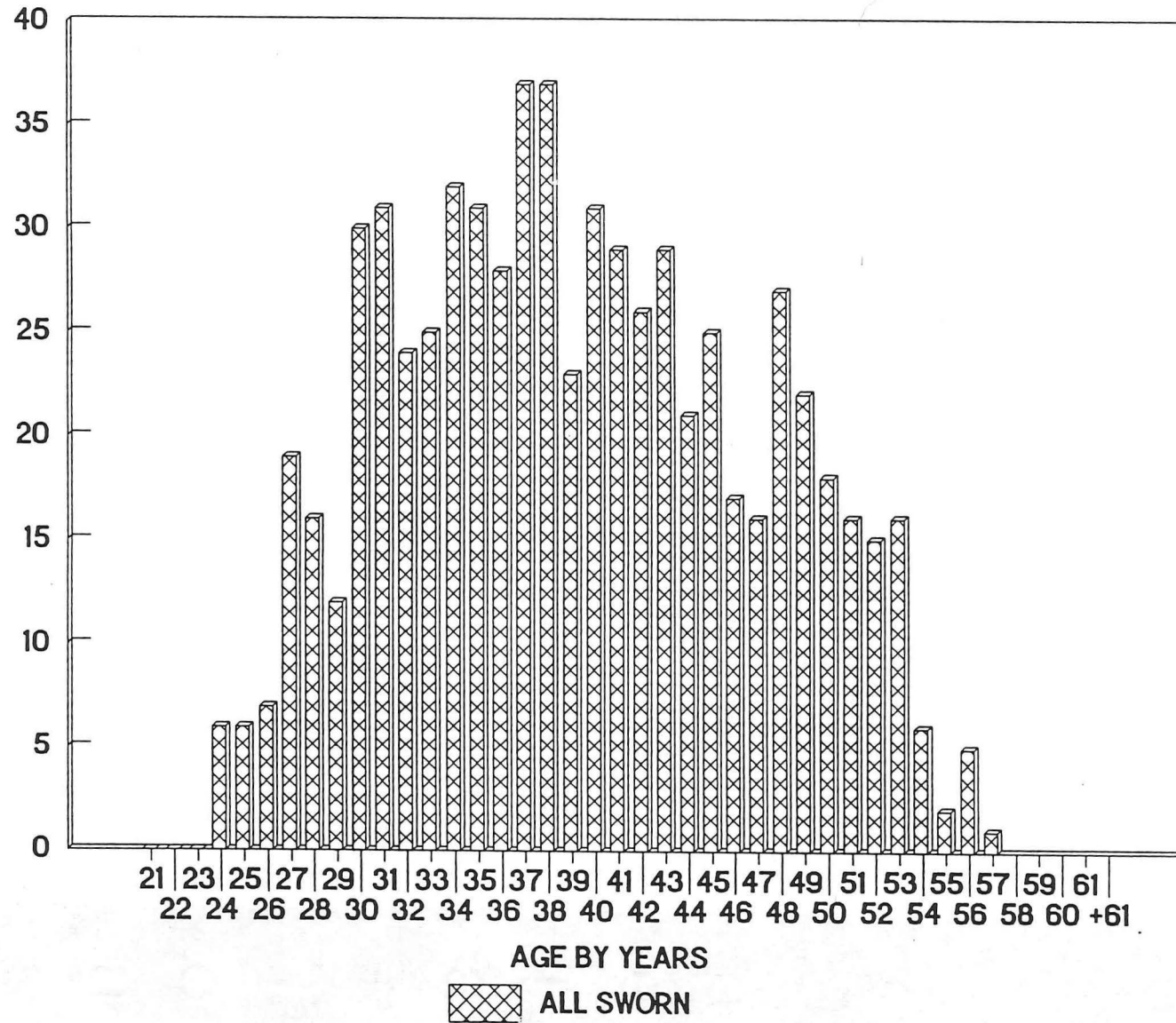
MANPOWER DISTRIBUTION								
<i>BY RACE – GENDER – RANK</i>								
<i>As of December 31, 1992</i>								
	Chief	Deputy Chief	Captain	Lieutenant	Sergeant	Patrolman	TOTAL	% OF DIVISION
WM	1	4	13	27	75	329	449	65.5%
WF			1	2	4	58	65	9.5%
BM			2	4	12	71	89	13.0%
BF				1	4	38	43	6.3%
HM				2	5	25	32	4.7%
HF					2	5	7	1.0%
IF						1	1	0.1%
TOTAL	1	4	16	36	102	527	686	100.0%
% OF DIVISION	0.1%	0.6%	2.3%	5.2%	14.9%	76.8%	100.0%	

AVERAGE AGE – YEARS OF SERVICE – YEARS IN RANK – AGE AT APPOINTMENT				
<i>BY RANK – As of December 31, 1992</i>				
	AGE	YEARS OF SERVICE	YEARS IN RANK	AGE AT APPT
DIVISION	39.7	12.7	–	27.0
CHIEF	48.1	25.3	5.4	22.7
DEPUTY CHIEF	48.7	22.9	3.8	25.8
CAPTAIN	42.1	22.9	3.8	22.6
LIEUTENANT	42.3	17.9	5.6	24.4
SERGEANT	42.2	16.8	7.6	25.4
PATROL OFFICER	38.8	11.2	–	27.6

AGE OF ALL SWORN

AS OF DECEMBER 31, 1992

NUMBER OF OFFICERS N=686



F
i
e
l
d

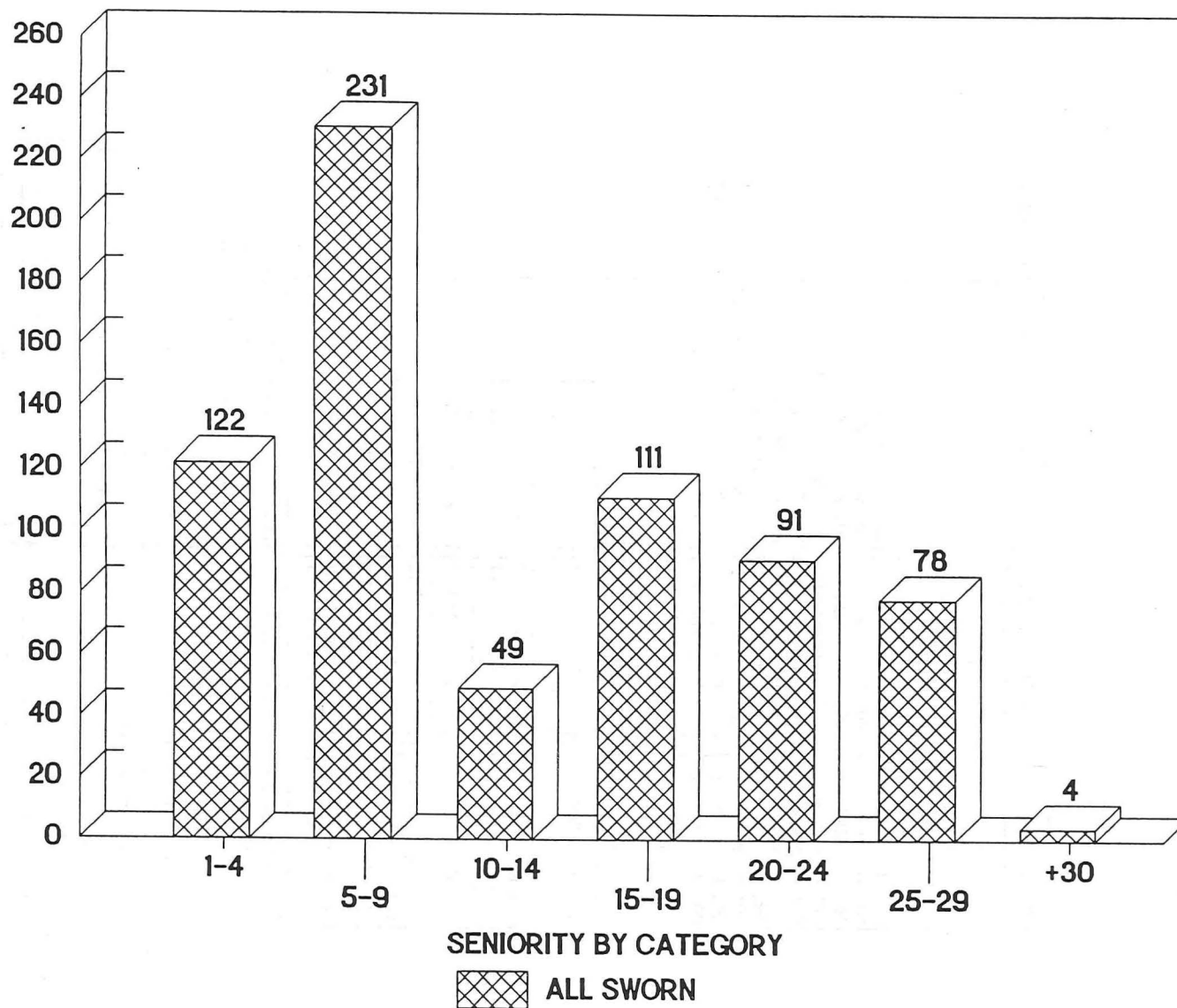
O
p
e
r
a
t
i
o
n
s

1992

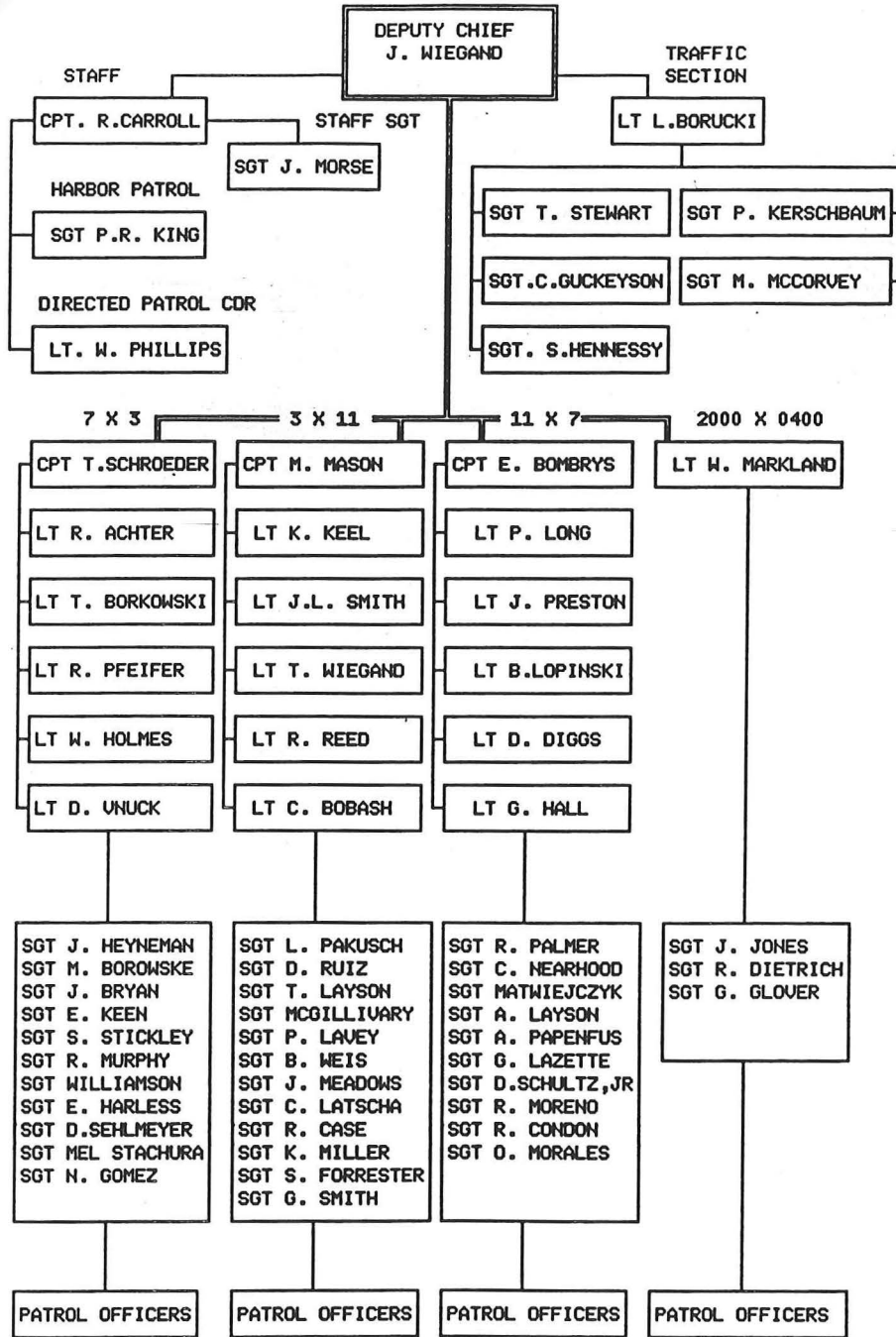
YEARS OF SERVICE

AS OF DECEMBER 31, 1992

NUMBER OF OFFICERS N=686



FIELD OPERATIONS BUREAU
(As of: DEC 1992)



FIELD OPERATIONS BUREAU

The "uniformed" officers of the Police Division make-up the Field Operations Bureau. The patrol shifts are the nucleus of the Division. The shifts require the largest commitment of manpower and are the "first line" in police work. Officers respond to calls for service that are both criminal and public service related, originated by the people of the community. The street officers also address other needs of the community that arise during the course of their presence in the neighborhoods.

The Bureau is commanded by a Deputy Chief who is responsible for four uniformed shifts, the Traffic Section, the Harbor Patrol, the Hazardous Devices Group, the Directed Policing Unit and an administrative staff.

1992 Achievements

The Harbor Patrol increased the number of written safety inspections by more than 5% over 1991.

Began development of the Field Training Officer (FTO) program.

The Traffic Section began a full-time Overweight Truck Program with the hiring of two civilian employees who operate the portable scales.

Participated in the Community Oriented Drug Emphasis (CODE) program with the assignment of foot patrol personnel to the TOTCO neighborhood.

Performed several Dignitary Protection assignments of presidential candidates.

1992 Set Backs

Due to limited personnel, the uniform shifts had to rely upon recall to staff basic patrol units.

The Division was unable to increase its involvement in Community Oriented Policing.

FIELD OPERATIONS BUREAU - 1992 MANPOWER ALLOCATION REPORT

DAILY AVERAGES
SHIFT 4 - 0600 X 1400 - 1992

MONTH	JAN	FEB	MAR	APR	MAY	JUN	JUL	AUG	SEP	OCT	NOV	DEC	AVG/DAY
TOTAL PERSONNEL	93.8	91	91.8	89.4	88.0	88.0	87.0	87.0	86.3	88.7	88.5	87.0	88.9
DAY OFF	24.3	27.2	28.0	25.8	26.5	23.8	21.6	23.6	19.2	22.7	22.5	20.9	23.8
VACATION	6.5	2.2	3.6	5.3	6.5	7.0	7.5	6.0	5.3	5.1	5.5	5.8	5.5
COMP TIME	0.5	0.4	0.6	0.5	0.0	0.1	0.0	0.1	0.2	0.4	0.3	0.5	0.3
ONE MAN UNITS	16.2	16.2	15.5	14.3	14.7	16.1	16.0	16.1	15.9	16.0	16.0	15.9	15.7
TWO MAN UNITS	16.4	16.3	16.1	16.0	16.0	16.0	16.0	16.1	16.0	16.0	16.0	15.8	16.1
FOOT PATROL	0.3	0.4	0.2	0.0	0.1	0.0	0.2	0.0	0.0	0.0	0.0	0.0	0.1
DIRECTED PATROL (DP)	5.1	5.2	4.6	4.1	4.4	5.0	5.0	5.0	4.6	5.4	4.8	4.8	4.8
OFFICERS WORKING	54.4	54.4	52.5	50.3	51.2	53.1	53.3	53.2	52.5	53.4	52.8	52.3	52.8
RELEIF FACTOR	1.7	1.7	1.8	1.8	1.7	1.7	1.6	1.6	1.6	1.7	1.7	1.7	-
OFFICERS LESS DP	49.4	49.2	47.9	46.2	46.8	48.1	48.3	48.2	47.9	48.1	48.0	47.5	48.0
RF LESS DP	1.9	1.8	1.9	1.9	1.9	1.8	1.8	1.8	1.8	1.8	1.8	1.8	-
CALLS FOR SERVICE	205.1	208.8	209.2	202.5	214.1	221.9	225.2	219.3	227.3	224.8	227.1	207.1	216.0

DAILY AVERAGES
SHIFT 5 - 1400 X 2200 - 1992

MONTH	JAN	FEB	MAR	APR	MAY	JUN	JUL	AUG	SEP	OCT	NOV	DEC	AVG/DAY
TOTAL PERSONNEL	108.0	108.0	108.0	107.5	107.4	107.0	105.0	105.0	105.0	105.0	103.0	100.8	105.8
DAY OFF	31.7	33.1	32.4	32.7	33.5	32.3	29.8	32.2	29.6	33.6	32.8	32.1	32.2
VACATION	1.2	2.0	3.6	3.3	7.3	7.2	7.8	6.2	7.1	5.1	3.7	3.8	4.9
COMP TIME	2.0	1.6	2.3	2.6	1.3	0.2	0.6	1.0	0.7	2.2	2.2	2.2	1.6
ONE MAN UNITS	12.1	12.7	11.6	11.0	9.6	11.1	11.3	11.4	10.5	10.5	11.3	11.5	11.2
TWO MAN UNITS	21.9	21.4	21.1	21.4	22.4	21.0	20.2	19.9	19.7	19.7	20.4	19.7	20.7
FOOT PATROL	0.0	0.0	0.0	0.0	0.0	0.0	0.0	0.0	0.0	0.0	0.0	0.0	0.0
DIRECTED PATROL	4.3	4.9	4.9	5.1	5.1	5.3	5.2	5.0	4.1	4.5	4.3	4.4	4.8
OFFICERS WORKING	60.2	60.3	58.6	58.8	59.4	58.3	56.9	56.1	54.1	54.5	56.4	55.3	57.4
RELEIF FACTOR	1.8	1.8	1.8	1.8	1.8	1.8	1.8	1.9	1.9	1.9	1.8	1.8	-
OFFICERS LESS DP	55.8	55.4	53.7	53.7	54.3	53.0	51.7	51.1	50.0	50.0	52.1	50.9	52.6
RF LESS DP	1.9	2.0	2.0	2.0	2.0	2.0	2.0	2.1	2.1	2.1	2.0	2.0	-
CALLS FOR SERVICE	320.0	331.9	341.6	359.1	386.9	382.0	391.4	371.0	377.3	358.6	345.8	316.9	356.8

FIELD OPERATIONS BUREAU - 1992 MANPOWER ALLOCATION REPORT

DAILY AVERAGES													
SHIFT 8 - 2000 X 0400 - 1992													
MONTH	JAN	FEB	MAR	APR	MAY	JUN	JUL	AUG	SEPT	OCT	NOV	DEC	AVG/DAY
TOTAL PERSONNEL	39.1	38.0	37.0	38.0	39.0	40.0	39.0	38.0	35.0	35.0	31.0	33.0	36.8
DAY OFF	12.0	10.8	10.4	11.2	12.2	11.4	11.7	11.9	10.4	10.9	9.9	10.6	11.1
VACATION	0.4	1.5	1.6	1.8	2.8	2.7	3.2	2.7	2.2	1.6	0.7	2.0	1.9
COMP TIME	0.7	1.1	0.7	1.1	1.0	1.5	0.5	0.7	0.6	1.0	0.9	0.5	0.9
ONE MAN UNITS	6.5	5.8	6.1	5.7	5.8	6.6	6.4	6.1	5.2	5.3	5.2	5.5	5.8
TWO MAN UNITS	8.4	8.0	8.2	7.9	8.1	7.6	7.4	7.5	7.0	7.2	7.0	6.5	7.6
FOOT PATROL	0.0	0.0	0.0	0.0	0.0	0.0	0.0	0.0	0.0	0.0	0.0	0.0	0.0
DIRECTED PATROL	0.0	0.0	0.0	0.0	0.0	0.0	0.0	0.0	0.0	0.0	0.0	0.0	0.0
OFFICERS WORKING	23.2	21.8	22.5	21.5	22.1	21.7	21.2	21.1	19.2	19.8	19.3	18.6	21.0
RELEIF FACTOR	1.7	1.8	1.7	1.8	1.8	1.9	1.9	1.8	1.8	1.8	1.6	1.8	-
OFFICERS LESS DP	23.2	21.8	22.5	21.5	22.1	21.7	21.2	21.1	19.2	19.8	19.3	18.6	21.0
RF LESS DP	1.7	1.8	1.7	1.8	1.8	1.9	1.9	1.8	1.8	1.8	1.6	1.8	-
CALLS FOR SERVICE	295.9	293.9	297.6	328.4	383.6	428.0	430.7	389.8	368.2	326.5	303.3	289.9	344.7

DAILY AVERAGES													
SHIFT 6 - 2200 X 0600 - 1992													
MONTH	JAN	FEB	MAR	APR	MAY	JUN	JUL	AUG	SEPT	OCT	NOV	DEC	AVG/DAY
TOTAL PERSONNEL	95.0	95.0	95.0	95.0	93.0	93.0	92.0	92.0	92.0	91.4	90.0	89.3	92.7
DAY OFF	29.5	26.1	29.6	29.4	29.2	29.5	28.5	28.2	26.8	29.5	29.4	28.6	28.7
VACATION	1.6	4.5	2.1	5.0	5.5	7.3	7.2	6.5	7.0	2.9	2.3	4.5	4.7
COMP TIME	1.5	2.0	1.4	1.2	0.8	0.0	0.0	0.0	0.8	3.2	2.2	1.0	1.2
ONE MAN UNITS	14.5	14.7	11.9	10.0	10.7	13.2	13.9	14.0	13.9	13.7	14.0	13.8	13.2
TWO MAN UNITS	17.2	17.2	18.2	18.2	17.9	16.6	16.7	16.7	16.9	16.0	16.4	15.7	17.0
FOOT PATROL	0.0	0.0	0.0	0.0	0.0	0.0	0.0	0.0	0.0	0.0	0.0	0.0	0.0
DIRECTED PATROL	2.3	5.3	5.0	5.0	5.2	4.8	4.7	5.0	4.8	4.9	4.9	4.2	4.7
OFFICERS WORKING	51.2	54.3	53.3	51.4	51.6	51.2	52.1	52.5	52.6	50.7	50.1	49.5	51.7
RELEIF FACTOR	1.9	1.8	1.8	1.8	1.8	1.8	1.8	1.8	1.8	1.8	1.8	1.8	-
OFFICERS LESS DP	48.9	49.0	48.3	46.4	46.4	46.4	47.4	47.5	47.8	45.8	45.3	45.3	47.0
RF LESS DP	1.9	1.9	2.0	2.0	2.0	2.0	2.0	1.9	1.9	2.0	1.9	2.0	-
CALLS FOR SERVICE	242.4	238.0	235.7	261.2	302.4	344.2	355.7	316.1	290.4	264.4	244.7	235.8	277.6

Harbor Patrol Unit Summary

PATROL CONTACTS

Activity	Number of Contacts	
	1992	1991
Citations & Arrests	14	12
Warnings	236	221
Accident Investigations	0	3
Written Boat Inspections	143	79
Visual Boat Inspections	291	331
Complaint Investigations	10	6
Navigational Aids/Hazard Checks	19	5
Assist Other Agencies	82	50

Traffic Section

Hit-Skip Unit

Activity	1992	1991
Hit-Skip Accidents Reported	4,653	3,851
Hit-Skip Accidents Investigated	2,693	1,775
Cases Inactive	1,926	2,172
Cases Prosecuted	1,324	634
Cases Cleared without Prosecution	977	1,096
Hit-Skips involving Stolen Cars	99	290
Cases Under Investigation	346	382
Cases Cleared by Field Operations Units	21	10
Outside Investigations	4	4

Traffic Section

Commercial Vehicle Enforcement

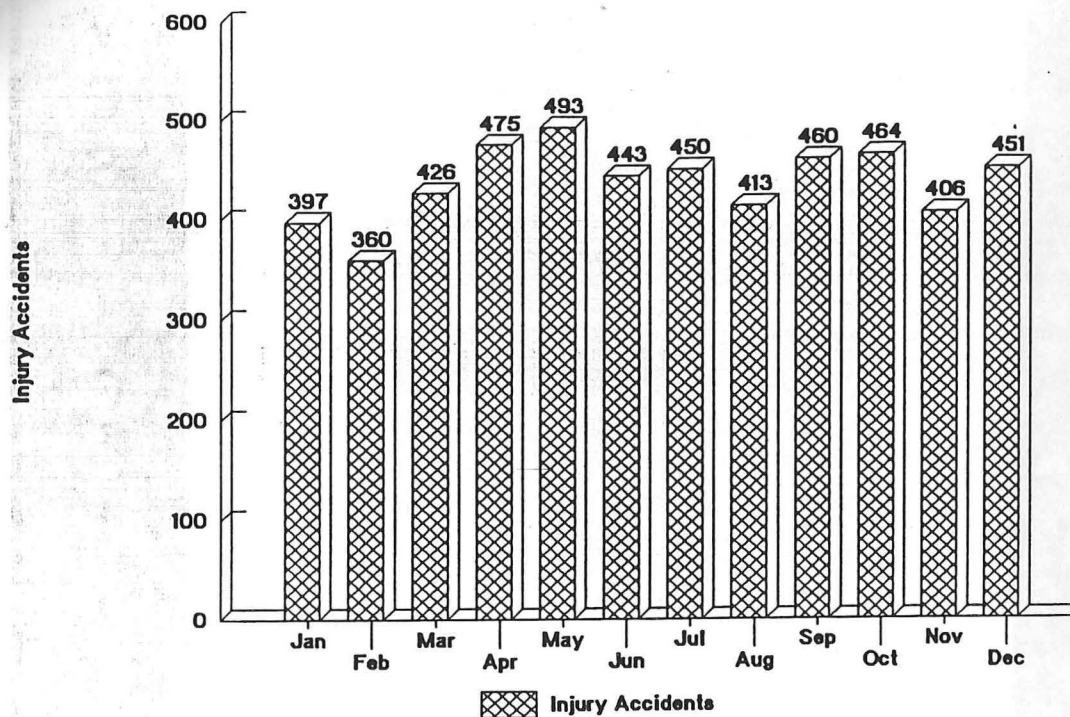
Month	Vehicles Weighed	Amount Overweight	Statutory Fines	Total Citations
January				
February				
March				
Program began July 1, 1992				
April				
May				
June				
July	33	626,920	23,631	43
August	24	443,050	14,888	44
September	16	470,550	16,841	30
October	43	961,700	34,214	87
November	50	984,050	37,037	83
December	36	717,900	26,795	64
Total	202	4,204,170	\$153,406	354

FATAL ACCIDENT STATISTICS													
1992													
	Jan	Feb	Mar	Apr	May	Jun	Jul	Aug	Sep	Oct	Nov	Dec	TOTAL
PEDESTRIAN	0	0	1	1	0	0	0	1	0	0	0	0	3
BICYCLE	0	0	0	0	0	0	0	0	1	0	0	0	1
MOTORCYCLE	0	0	0	0	0	1	1	0	0	0	0	0	2
CAR OR TRUCK	0	0	1	2	2	3	0	2	2	3	3	3	21
TOTAL	0	0	2	3	2	4	1	3	3	3	3	3	27

SUMMARY OF MOVING VIOLATIONS ISSUED			
SECTION	1992	1991	% + -
Traffic Section	1536	2335	-34.2%
0600 X 1400 Shift	7157	8648	-17.2%
1400 X 2200 Shift	11839	10872	8.9%
2000 X 0400 Shift	6070	12582	-51.8%
2200 X 0600 Shift	11604	5311	118.5%
All Others	910	1855	-50.9%
Total	39116	41603	-6.0%

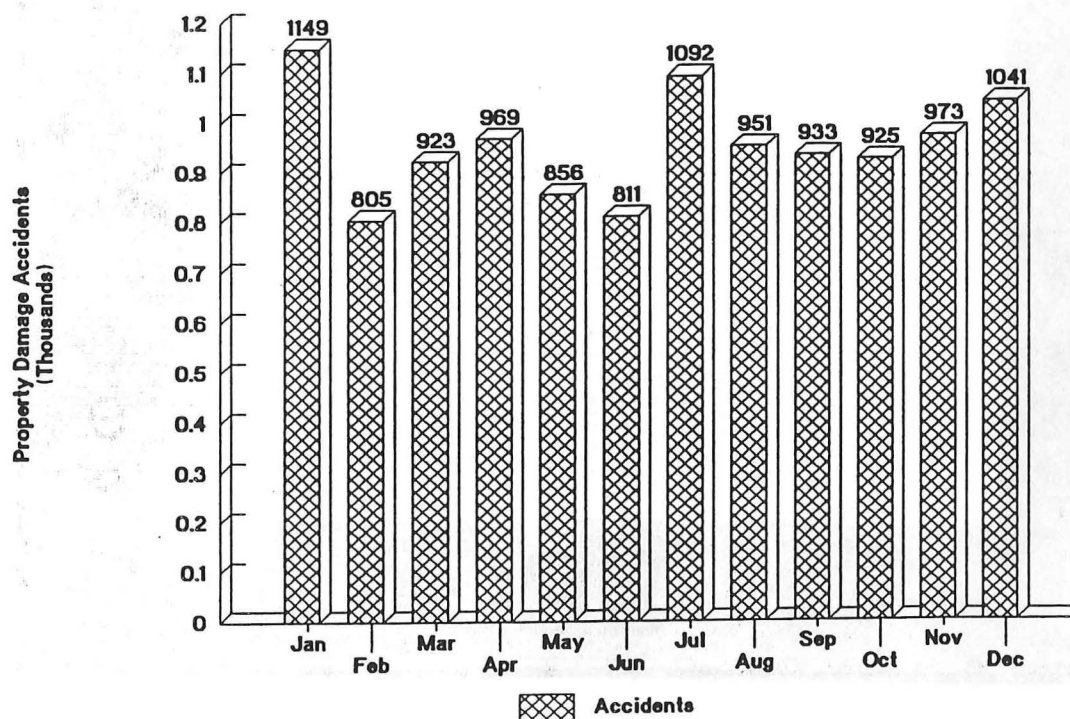
Accident Statistics - 1992

Injury Accidents - By Month



Accident Statistics - 1992

Property Damage Accidents - By Month

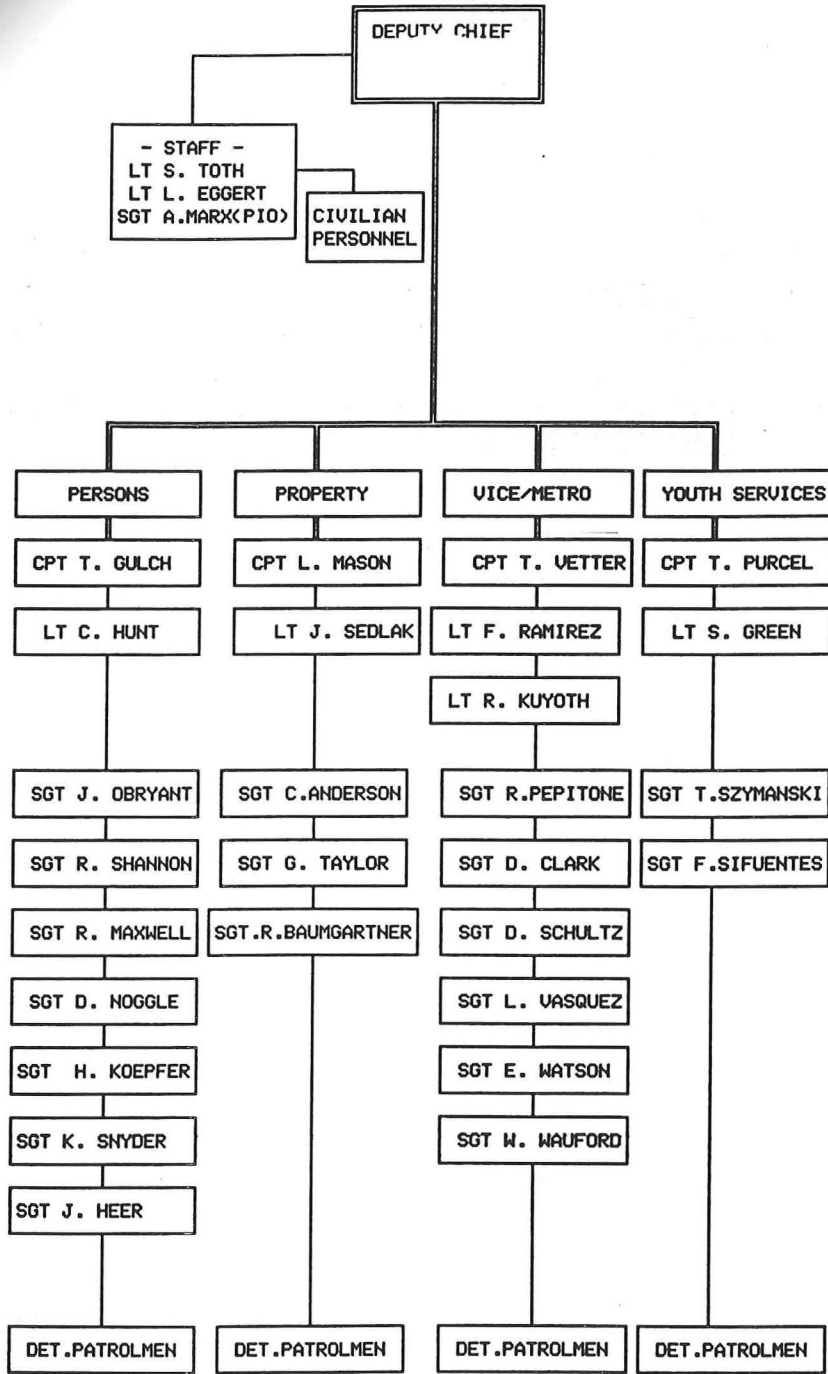


I
n
v
e
s
t
i
g
a
t
i
v
e

S
e
r
v
i
c
e
s

1992

INVESTIGATIVE SERVICES BUREAU
(As of: DEC 1992)



INVESTIGATIVE SERVICES BUREAU

The Investigative Services Bureau is the investigatory branch of the Police Division. The primary objective of the Bureau is to expend investigative efforts in interviewing victims and witnesses, locate, identify, and preserve physical evidence; recover stolen property; identify and apprehend suspects; present the case to the prosecutor and assist in the prosecution of the defendant.

1992 Achievements

Investigators uncovered a major "chop shop" operation working within the city. This investigation resulted in the arrest and indictment of twelve individuals, and the recovery of trucks and truck parts valued at \$3,000,000.

The Metro Task Force completed a multi-jurisdictional drug conspiracy investigation involving a major drug organization operating in the city. Several arrests were made of individuals known to be associated with the "Marielito" Cuban organized crime network.

The SCAT Program was implemented to reduce the number of auto thefts.

Staffing of the Afternoon and Midnight Shifts were increased.

1992 Set Backs

Division manpower shortages have prevented the assignment of additional investigators to the Bureau.

Division budget constraints have prevented the purchase of office furniture, equipment and carpeting.

INVESTIGATIVE SERVICES BUREAU

Administrative Staff

The Administrative Staff of the Investigative Services Bureau has the responsibility of maintaining personnel time sheets, sick leave, vacation and all other records pertaining to the Bureau's personnel. It coordinates all roll call training; supervises the civilian desk technicians; coordinates case information with the Lucas County Prosecutor's Office and Grand Jury; and ensures the service of subpoenas on Bureau personnel. In addition, it coordinates the highly successful Crime Stopper Program.

Public Information is a new area of responsibility which was added to the ISB staff during 1991. The Public Information Officer is responsible for preparing all Press Releases and for forwarding timely information of public concern to the media.

CRIME STOPPER PROGRAM

1992

Crime Class	Cases Logged	Cases Solved	Arrests	Indictments
Robbery	49	0	11	2
Homicide	148	0	11	6
Burglary	44	0	6	0
Auto Theft	31	4	11	8
Theft	51	1	2	1
Arson	40	0	3	3
Drugs	317	1	13	5
Rape	14	0	1	0
Hit-Skip	31	0	0	0
Weapons	3	0	0	0
Escape	0	0	0	0
Receiving	29	0	0	0
Liquor	1	0	0	0
Warrants	63	5	30	0
Forgery	1	0	0	0
Gambling	3	0	0	0
Fraud	19	0	0	0
Assault	28	0	0	0
Vandalism	2	0	0	0
Miscellaneous	45	0	1	0
255-DRUG	51	0	1	0
'Unknown'	5	0	1	0
Total	975	11	91	25

SUMMARY

During 1992, the Crime Stopper Program received a total of 975 calls which resulted in ninety-one arrests, eleven solved cases, and twenty-five persons indicted.

A total of \$ 10,200 was paid to twenty-seven persons for providing information to the Crime Stopper Program. The highest amount paid to any individual was \$ 1,000.

Investigative Services – Vice/Metro & Youth Services

VICE – METRO SECTION	1992	1991	% +/-
ARREST SUMMARY			
Prostitution	720	792	-9.1%
Gambling	11	24	-54.2%
Liquor	103	130	-20.8%
Miscellaneous	447	653	-31.5%
Drug Charges	1813	2150	-15.7%
Drug Arrests	1404	1572	-10.7%
OTHER ACTIVITIES			
License Applications	177	165	7.3%
Search Warrants	297	327	-9.2%
Public Speeches	37	43	-14.0%
Dollar Value of Drugs Seized	\$5,760,896	\$5,040,238	14.3%

YOUTH SERVICES SECTION	1992	1991	% +/-
Complaints Received	14236	14246	-0.1%
Complaints Unassigned	6600	5051	30.7%
Complaints Cleared			
by arrest	3726	4274	-12.8%
cases adjusted	1805	1745	3.4%
exceptionally cleared	215	606	-64.5%
inactive	692	1039	-33.4%
unfounded	30	28	7.1%
investigation	891	1038	-14.2%
Cases Closed	7359	8730	-15.7%
Cases Continued	277	433	-36.0%

CRIMES AGAINST PERSONS SECTION

Robbery Unit

This Unit investigates all commercial, street and financial institution robberies. Suspect auto and suspect photo files are kept to maintain current and past robbery events records in the event of similar offenses occurring. The Robbery Unit also correlates all information regarding suspects and possible locations for stake-outs with the uniformed units with the intention of on scene apprehension. Unit members are called upon to conduct line-ups, photo identifications, and one-on-one street identifications.

Homicide Unit

The Homicide Unit has a wide range of investigative responsibilities, from the investigation of purposeful deaths caused by violent means, to simple assault investigations. Its members work in close relationship with the Lucas County Coroner and his investigators. Additional investigative responsibilities include unattended death situations, felonious assaults, aggravated assaults, kidnapping, abduction, and weapons offenses.

Personal Assault Unit

This Unit investigates all sex related crimes, including sexual child abuse, and telephone harassment complaints. Its members attempt to recognize and evaluate series of similar sex related crimes in order to forward the information to the appropriate street patrol units. An on-going program is that of working with the Child Sexual Abuse Team at the Medical College of Ohio, in order to improve procedures related to the treatment of both victim and offenders. The Unit works actively with members of Toledo United Against Rape in training programs.

Scientific Investigation Unit

The Scientific Investigation Unit visits all major crime scenes with the task of sketching the scene, photographing it, as well as searching for and lifting fingerprints when found. Its members collect and preserve all physical evidence for future analysis and/or court presentations. In addition, its members attend autopsies when required and record the findings of the forensic pathologists, as well as collecting any evidence obtained as a result of the autopsy.

CRIMES AGAINST PERSONS SECTION

ROBBERY/HOMICIDE UNIT	1992	1991	% +/-
Complaints Received	20129	20214	-0.4%
Homicides	46	35	31.4%
Commercial Robberies	342	409	-16.4%
Street Robberies	953	1106	-13.8%
Purse Snatches	149	184	-19.0%
Financial Institutions	15	22	-31.8%
Felony Complaints	896	1004	-10.8%
Domestic Violence	6251	6414	-2.5%
Racial, Religious or Ethnic Intimidation	31	26	19.2%
Misdemeanor Complaints	16238	15133	7.3%
PERSONAL ASSAULT UNIT			
Complaints Received	2282	2282	0.0%
Felonies	862	917	-6.0%
Misdemeanors	1420	1365	4.0%
Rapes	338	464	-27.2%
Attempted Rapes	23	45	-48.9%
Complaints Assigned	642	648	-0.9%
Arrests	280	253	10.7%
Inactive	750	852	-12.0%
Unfounded Complaints *	25	33	-24.2%
Exceptionally Cleared Complaints **	533	467	14.1%
SCIENTIFIC INVESTIGATION UNIT			
CRIME SCENE ASSIGNMENTS			
Latent Fingerprint Search	552	603	-8.5%
Latent Fingerprint Lifts	304	423	-28.1%
Photography Assignments	456	621	-26.6%
NAA Tests	14	23	-39.1%
Crime Scene Sketches	32	25	28.0%
Moulage Casts	7	6	16.7%
OTHER ASSIGNMENTS			
Fingerprint Comparisons	297	359	-17.3%
Autopsies Attended	67	52	28.8%
Polygraphs Administered	61	65	-6.2%
UNFOUNDED COMPLAINTS	<i>A complaint is "unfounded" if the investigation determines that no offense occurred, nor was attempted.</i>		
EXCEPTIONALLY CLEARED COMPLAINTS	<i>A complaint is "exceptionally cleared" when an offense has occurred and the identity of the suspect or offender has been established, but for certain reasons the offender will not be prosecuted.</i>		

CRIMES AGAINST PROPERTY SECTION

Auto Theft Unit

The primary role of this Unit is to investigate all phases of auto theft and recoveries in an attempt to establish the pertinent information which will lead to the successful arrest and prosecution of the perpetrator. This Unit accomplishes this by maintaining files of stolen and recovered vehicles and by working actively with the uniformed patrol units, and adjacent police agencies in their vehicle investigations. By maintaining close working relationship with the various title officers and the Bureau of Motor Vehicles in Columbus, members of the Unit attempt to identify professional motor vehicle theft rings, as well as the routine teenage joyrider. In addition, the Unit is concerned with the theft prevention and investigation of heavy industrial equipment and marine type equipment offenses, as well as the investigation of altered, concealed, or obliterated vehicle identification numbers, and vehicle arson.

Burglary Unit

The Burglary Unit investigates residential and commercial break-ins that are reported to the Police Division. These investigations include the development of profiles of burglary suspects by examining crime scenes, interpreting physical evidence, interrogating suspects and interviewing witnesses. Information is collected and then disseminated to the patrol operations in order to advise them on particular burglary patterns. Citizen cooperation is solicited by presenting programs to the community illustrating a realistic picture of the burglary problem, and explaining the role of the responding officers, as well as the investigator assigned to the case.

Check Unit

This Unit provides a complete investigative service pertaining to crimes of forgery and passing bad checks. It maintains files on active and inactive offenders of these types of crime and of stolen checks, as well as check writing machines. One of its primary roles is that of liaison with area banks and commercial lending institutions in disseminating information to assist in apprehending persons involved in forgery and the cashing of bad checks.

Theft Unit

The Theft Unit processes and investigates miscellaneous crime such as theft, credit card offenses, vandalism, and extortion. It has the responsibility of serving arrest warrants issued in other jurisdictions, when the person sought is in Toledo.

CRIMES AGAINST PROPERTY SECTION

AUTO UNIT	1992	1991	% +/-
Complaints Received	6283	7106	-11.6%
Complaints Investigated	1227	1418	-13.5%
Stolen Autos	3987	4580	-12.9%
Recovered Autos	4000	4485	-10.8%
Arrests	284	494	-42.5%
Unfounded Complaints	75	72	4.2%
Exceptionally Cleared	636	634	0.3%
BURGLARY UNIT			
	1992	1991	% +/-
Complaints Received	6268	6430	-2.5%
Residential Burglaries	3894	4125	-5.6%
Commercial Burglaries	1405	1569	-10.5%
Complaints Investigated	5218	5536	-5.7%
Arrests	760	639	18.9%
Complaints Reduced	953	1046	-8.9%
Unfounded	31	40	-22.5%
Exceptionally Cleared	303	280	8.2%
CHECK UNIT			
	1992	1991	% +/-
Complaints Received	3681	5988	-38.5%
Misdemeanor Complaints	3017	4634	-34.9%
Felony Complaints Investigated	619	1173	-47.2%
Felony Arrests	374	631	-40.7%
Exceptionally Cleared	247	495	-50.1%
THEFT UNIT			
	1992	1991	% +/-
Complaints Received	21829	25001	-12.7%
Complaints Investigated	952	1536	-38.0%
Arrests	2862	2997	-4.5%
Warrants Pending	3336	3574	-6.7%
Unfounded Complaints	31	37	-16.2%
Exceptionally Cleared	3000	3223	-6.9%

CEBU
MAY 19 1961

RECEIVED
MAY 19 1961

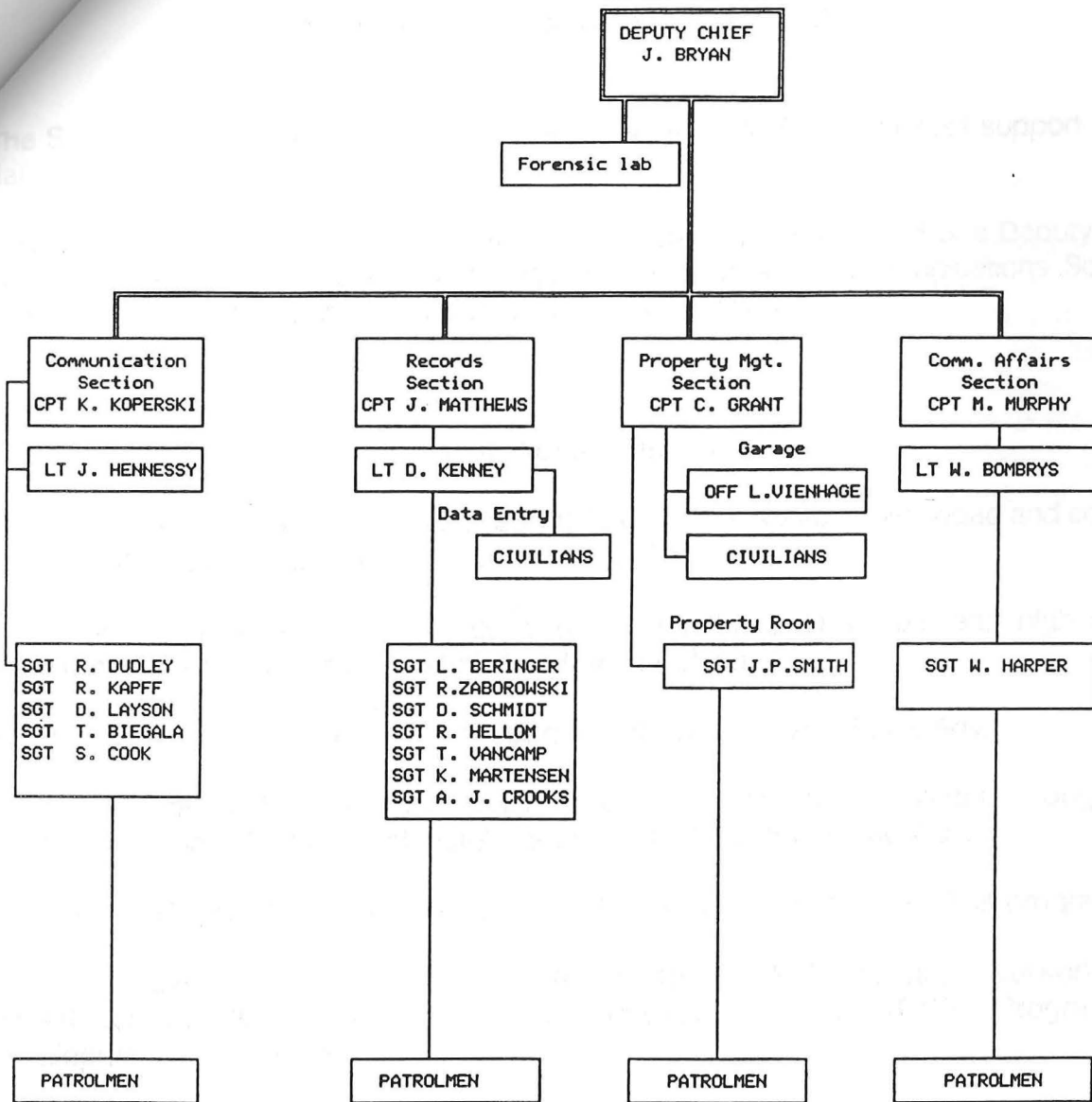
RECEIVED
MAY 19 1961

S
u
p
p
o
r
t

S
e
r
v
i
c
e
s

1992

SUPPORT SERVICES BUREAU
(As of: DEC 1992)



SUPPORT SERVICES BUREAU

The Support Services Bureau is comprised of Sections that act as direct support to the daily operation of the Police Division.

Organizationally, the Support Services Bureau is under the command of a Deputy Chief and consists of the Forensic Laboratory, Records Section, Communications Section, Property Management, and the Community Affairs Section.

1992 Achievements

Development of computer generated reports to monitor dispatcher workload and compile statistics through the computer aided dispatch (CAD) system.

Acquisition of a larger Central Processing Unit for the CAD system and high speed telephone lines to increase speed of data transmissions.

Initiated a computerized fixed asset report for all Division owned property.

Began publishing the "BLOCKWATCHER" crime prevention newsletter through the Community Affairs Section and distributed to 1,000 households monthly.

Acquired a \$50,076 federal Anti-drug Abuse Grant to operate the PACT III program.

The Community Affairs Section was awarded the Governor's Traffic Safety Network 1992 Award for Excellence in Education for developing a Safe-T-City Program for developmentally disabled children.

Reinstated the Forensic Laboratory's license for processing blood alcohol tests.

1992 Set Backs

Cut backs in some School Safety programs due to staff decreases.

Failure to complete the computer link between the Property Room and the Records Section.

SUPPORT SERVICES BUREAU

COMMUNICATIONS SECTION

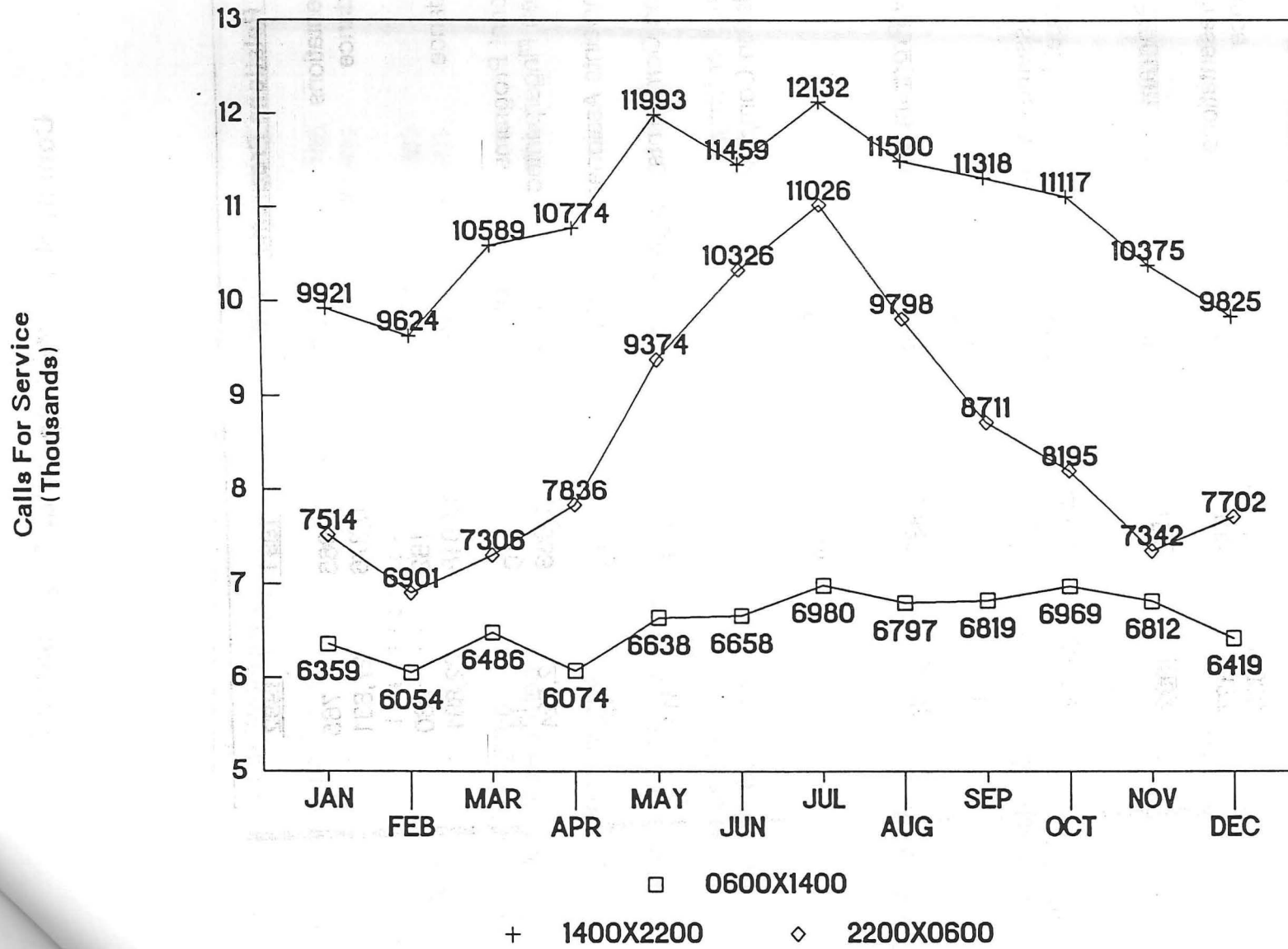
The Communications Section, as its name implies, is the primary hub of the entire Police Division's emergency communications network, including: telephone communications, radio communications; and teletype communications. This Section receives and records on tape, all necessary incoming calls, both by radio and by telephone. It is responsible for dispatching all necessary police units to calls for service and other police situations. Section personnel monitor the National Weather Service teletype and broadcast all severe weather information. In addition, this Section is responsible for maintaining the portable radio inventory and the battery management program to ensure the proper functioning of the portable radio equipment.

COMMUNITY AFFAIRS SECTION

The Community Affairs Section acts as liaison between community organizations and the Division by attending meetings, providing information and reporting to the Administration on past, current and potential community problems. Another primary responsibility of this Section is that of investigating complaints from the local school systems involving the safety of students, teachers, and administrators, as well as investigating complaints involving neighbors which can not be diffused or alleviated by conventional police practices. The Section conducts traffic and personal safety programs in the schools, as well as coordinating the pre-school, summer safety program, Safe-T-City. Community crime prevention is also under its control.

Calls For Service - 1992

Number of Calls For Service by Shift



Community Affairs Section

<u>Community Relations Programs</u>	<u>1991</u>	<u>1992</u>
School Presentations	1,065	765
Attendance	40,376	27,831
Public Talks	182	260
Attendance	17,018	22,891
Child Fingerprint Programs	10	14
Children Fingerprinted	1,053	2,524
Citizens Complaints Assigned	115	44
School Related Complaints Assigned	n/a	311
Racial, Religious or Ethnic Intimidation Complaints	39	33
Arrests	114	36
 <u>School Safety Program</u>	 <u>1991</u>	 <u>1992</u>
Safe-T-City	1,172	1,111
School Safety Assemblies	546	413
Attendance	42,176	36,708
 <u>Block Watch Program</u>	 <u>1991</u>	 <u>1992</u>
Block Watch Presentations	198	327
Attendance	6,652	8,093
New Residences Enrolled	2,099	585
Total Household Participation	42,718	43,303

RECORDS SECTION

REPORTS DESK	1992	INCOME RECEIVED	1992
T.R.U. Reports	16,024	Crime Reports - Counter	\$ 7,867
Total Reports	91,581	Crime Reports - Mail	\$ 13,567
Reports Filmed	83,200	Record Checks - Counter	\$ 36,180
ARREST/WARRANT DESK		Record Checks - Mail	\$ 10,273
Warrant Grace Letters	3,999	Identification	\$ 12,175
New Warrants	5,096	Auto Auction	\$ 43,265
Warrants Withdrawn	1,453	Total Income	\$ 123,327
IDENTIFICATION		RECORD CHECKS	
Fingerprints Processed	34,930	Paid Checks	9,361
Film Processed	2,228	Unpaid Checks	11,180
Color Prints	7,198	Expungements	787
B&W Prints	3,290	NORIS ENTRIES	
Latent Fingerprints	34	Warrants	7,201
AUTO DESK		Arrest/Recidivist	2,794
Stolen Autos	3,458	Attempt to Locates	4,547
Recovered Autos	3,647	New RIDs	2,921
Autos Towed	10,607	Cancellations	57,568
Heavy Duty Tows	59	Modifications	49,915
Autos Junked	2,167	Transfers	915
Kasle Iron Junk	278	Total NORIS	125,921
Autos Auctioned	57	ARRESTS MADE 524	
		SUMMONS ISSUED 3,548	

RECORDS SECTION

The Police Division's Records Section acts at the central repository of all Division Incident Reports, criminal histories, information on lost, stolen, and recovered property, and all other operational information. By maintaining a historical record of Division activities such as files and updates on criminals, suspected criminals, person wanted on warrants, arrests, criminal activity statistics, fingerprints, photographs, stolen and recovered property and vehicles, information is readily accessible to Division members and other qualified agencies.

FORENSIC LABORATORY

Cases Received	1991	1992
Toledo Police Division	2,437	2,128
Outside Agencies	40	39
Total Cases	2,477	2,167
Analysis Type		
General Analytical Chemistry	21	9
Serological/Microscopy	74	90
Firearms Identification/Toolmarks	216	244
Drug Chemistry - Marijuana	194	337
Drug Chemistry - Cocaine/Heroin	1,898	1,399
Alcohol Determination	91	111
Miscellaneous	2	1
Total Analysis Requests	2,496	2,191
Subpoenas Received	605	529

FORENSIC LABORATORY

The Toledo Police Regional Forensic Laboratory provides its technical services to all area law enforcement agencies. Working in conjunction with the Scientific Investigation Unit, it develops proper methods for the collection and preservation of physical evidence. Lab services which are provided include: forensic drug analysis, arson analysis, firearms identification, serial number restoration, blood alcohol determination, serological testing, hair and fibre determination and various other microanalytical techniques. Crime Lab personnel are called upon to testify in court as to their analytical findings.

PROPERTY MANAGEMENT SECTION

INVENTORY OF DIVISION OWNED VEHICLES	1991	1992
* Harbor Patrol Boats	2	2
* Marked Patrol Sedans	108	109
* Unmarked Sedans	117	116
* Marked Patrol Wagons	20	20
* Asset Forfeiture Vehicles	36	30
* Miscellaneous Vehicles	23	27
WEAPONS INVENTORY	1991	1992
* Handguns - Sig Sauer 9mm	797	798
* Shotguns - Remington model 870	189	189
* Rifles - Colt .223	16	16
* Rifles - Remington .308	5	5
* Tear Gas Guns	18	18
PROPERTY ROOM OPERATIONS	1991	1992
* Incoming Property Cases	7,667	7,260
* General Auctions	1	2
* Auction Proceeds	\$ 13,688	\$ 28,262
* Unclaimed Money Deposited into General Fund	\$ 42,001	\$ 69,433

PROPERTY MANAGEMENT SECTION

The Property Management Section has the responsibility of maintaining control and accountability of all Division owned property. It functions as the receiving point for all incoming and outgoing deliveries for the entire Division. Included within its sphere of responsibility is the task of maintaining the Division's Motor Pool and the equipment assigned to each vehicle, overseeing the operation of the Police Armory and its arsenal, as well as maintaining the proper and legal functioning of the Police Property Room. This Section conducts the Police Division's auctions in which autos, bicycles, and any other confiscated property, which remains unclaimed is offered for sale to the general public.

C
r
i
m
e

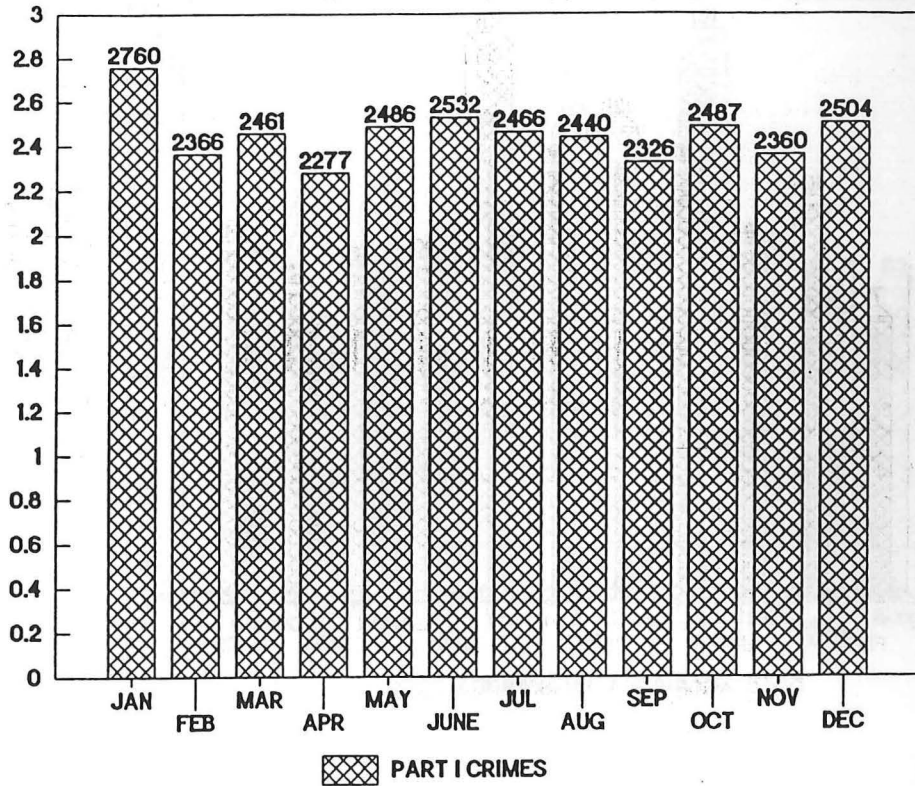
S
t
a
t
i
s
t
i
c
s

1992

1992 UCR

ALL PART I CRIMES COMBINED - BY MONTH

NUMBER OF CRIMES N-29,465
(Thousands)

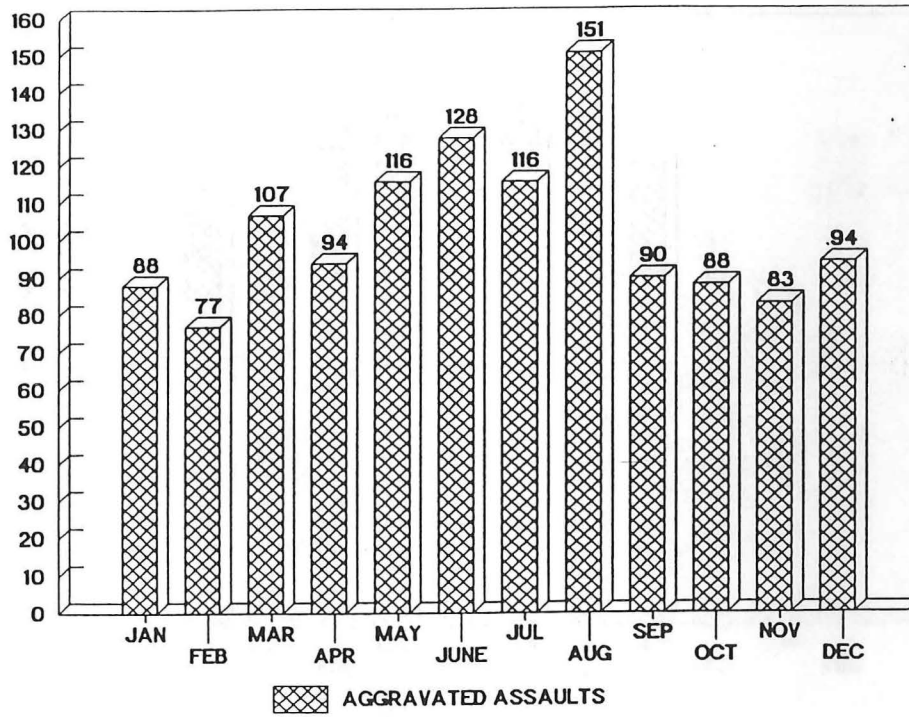


Uniform Crime Report - 1992													
	JAN	FEB	MAR	APR	MAY	JUNE	JUL	AUG	SEP	OCT	NOV	DEC	TOTAL
MURDER	3	4	4	9	2	1	2	6	4	3	6	1	45
RAPE	23	31	25	36	37	32	38	40	35	24	23	24	368
ROBBERY	164	122	136	144	118	117	101	108	103	139	139	124	1515
AGG. ASSAULT	88	77	107	94	116	128	116	151	90	88	83	94	1232
BURGLARY	568	526	466	446	548	510	501	539	542	453	496	521	6116
GRAND THEFT	293	266	317	297	315	329	341	337	346	384	303	317	3845
THEFT	1138	992	1024	951	1023	1100	1051	986	898	1019	959	1074	12215
AUTO THEFT	483	348	382	300	327	315	316	273	308	377	351	349	4129
TOTAL UCR	2760	2366	2461	2277	2486	2532	2466	2440	2326	2487	2360	2504	29465

AGGRAVATED ASSAULT – 1992

OFFENSES REPORTED BY MONTH

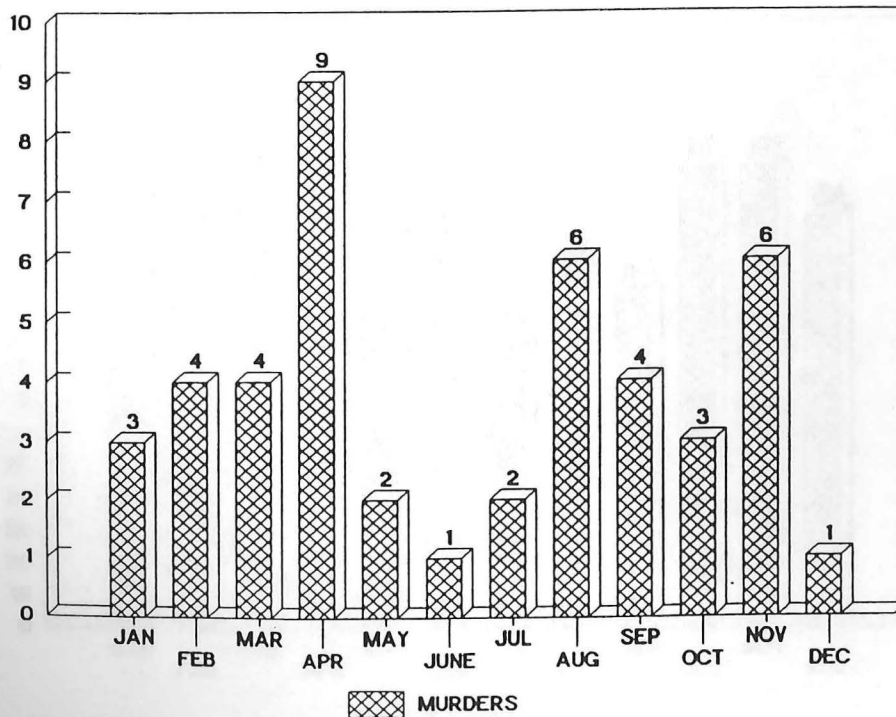
NUMBER OF OFFENSES N=1,232



MURDERS – 1992

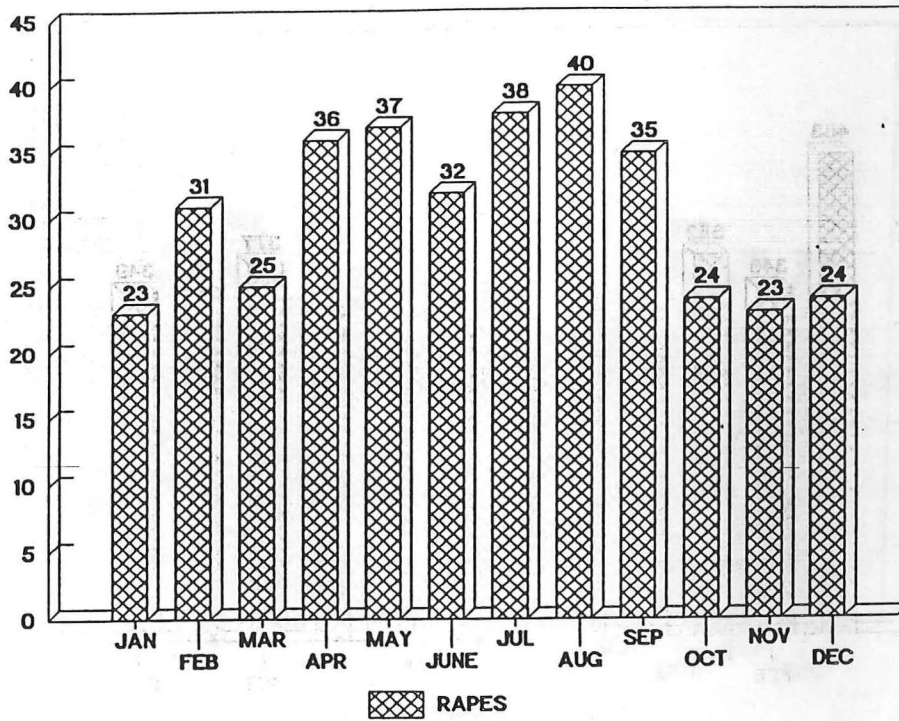
OFFENSES REPORTED BY MONTH

NUMBER OF OFFENSES N=45



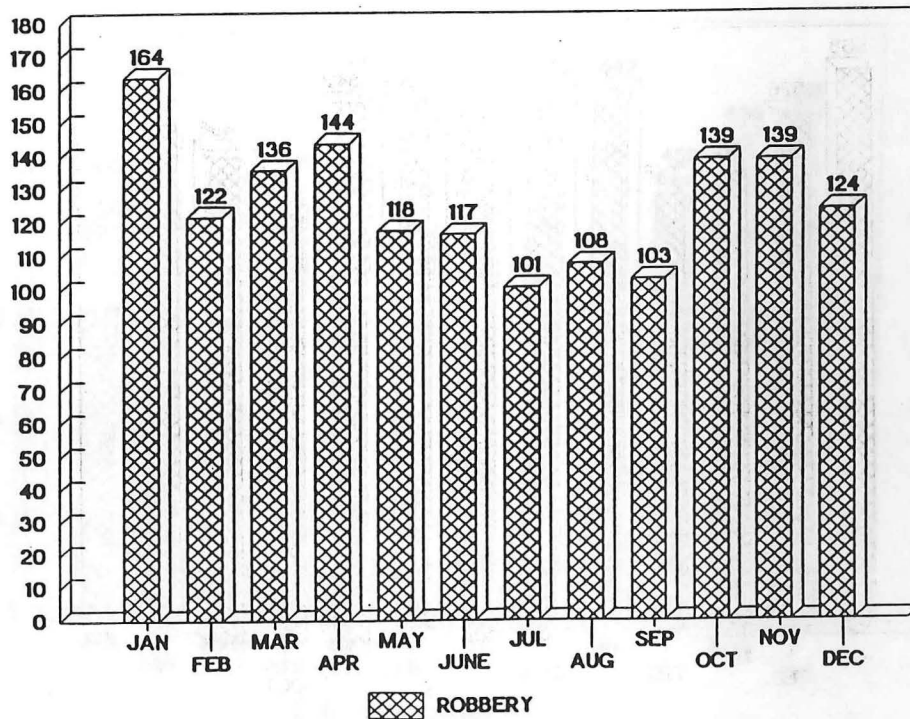
NUMBER OF OFFENSES N-368

RAPE - 1992 OFFENSES REPORTED BY MONTH



NUMBER OF OFFENSES N-1,515

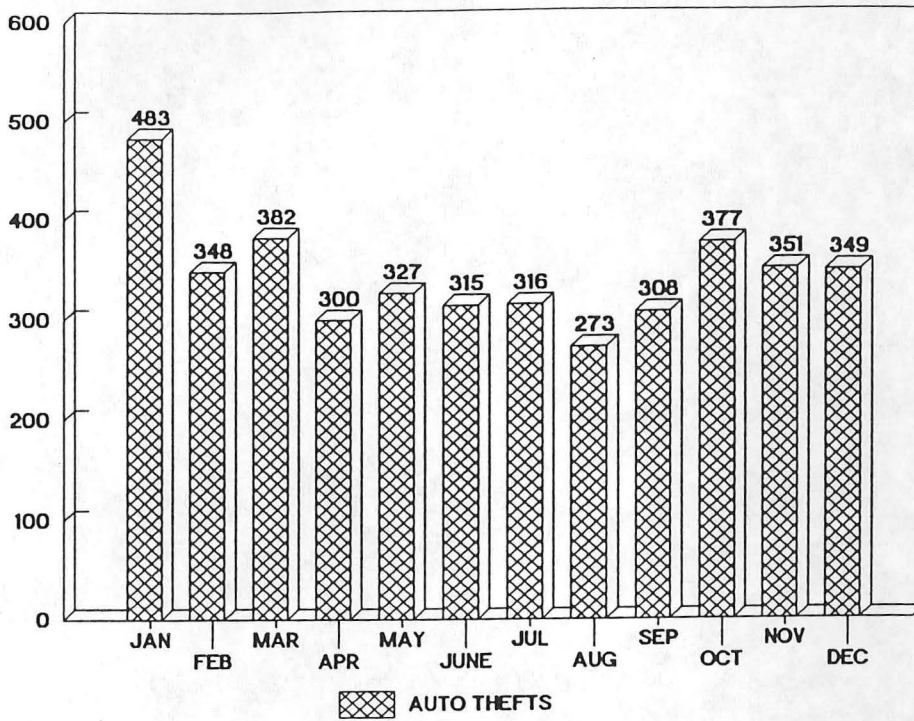
ROBBERY - 1992 OFFENSES REPORTED BY MONTH



NUMBER OF OFFENSES N-4.129

AUTO THEFT - 1992

OFFENSES REPORTED BY MONTH



NUMBER OF OFFENSES N-6.116

BURGLARY - 1992

OFFENSES REPORTED BY MONTH

