

TOLEDO POLICE DIVISION
1867 1987



1987
ANNUAL REPORT

CITY OF TOLEDO
DIVISION OF POLICE
1987 ANNUAL REPORT
TABLE OF CONTENTS

Part I - Introduction

Law Enforcement Code of Ethics	1
Letter to the City Manager	3
Toledo City Government	4
Organizational Chart of City Government	5
Organizational Chart of the Police Division	6

Part II - Items of Interest

History of the Police Division	7
Past and Present Chiefs of Police	12
Officers Killed in the Line of Duty	13
1987 Retirements	15
1987 Division Service Awards	16

Part III - Police Administration

Organizational Chart	17
Unit Descriptions	18
Internal Affairs Summary	19

Part IV - Field Operations Bureau

Organizational Chart	20
Section/Unit Descriptions	21
Sector/Beat Map of Toledo	22
Activity Summary of Shifts	23
Accident Comparison Chart	24
Accidents by Hour of Day Graph	25
Accidents by Day of Week Graph	26
Hourly Accident Data	27
Mounted Patrol Summary	28
Junk Auto Unit Summary	29

TABLE OF CONTENTS

Part V - Investigative Services Bureau

Organizational Chart	30
Description of Administrative Staff/Units	31
Scientific Investigation Unit Case Data	32
Description of Crimes Against Persons Section	33
Case Information - Crimes Against Persons	34
Description of Crimes Against Property Section	35
Case Information - Crimes Against Property	36
Description of Vice-Metro & Youth Services	37
Case Information - Vice-Metro & Youth Services	38
Crime Stopper Program	39

Part VI - Support Services Bureau

Organizational Chart	40
Description of Sections	41
Records Section Summary	42
Communications Section Summary	43
Crime Laboratory Summary	44
Property Management Report	45

Part VII - Administrative Services Bureau

Organizational Chart	46
Description of Sections	47
1987 Budget Summary	48
Personnel/Salary Summary	49
Personnel Distribution Chart	50
Community Affairs Section Summary	51
Block Watch Summary	52

Part VIII - Uniform Crime Report Summary

1987 Uniform Crime Report Data	53
1986 Comparative Crime Index	54



PART I
INTRODUCTION

LAW ENFORCEMENT CODE OF ETHICS

As a law enforcement officer, my fundamental duty is to serve mankind; to safeguard lives and property; to protect the innocent against deception; the weak against oppression or intimidation, and the peaceful against violence or disorder; and to respect the constitutional rights of all persons to liberty, equality, and justice.

I will keep my private life unsullied as an example to all; maintain courageous calm in the face of danger, scorn or ridicule; develop self restraint; and be constantly mindful of the welfare of others. Honest in thought and deed in both my personal and official life, I will be exemplary in obeying the laws of the land and regulations of my department. Whatever I see or hear of a confidential nature or that is confided to me in my official capacity will be kept ever secret unless revelation is necessary in the performance of my duty.

I will never act officiously or permit personal feelings, prejudices, animosities or friendship to influence my decisions, with no compromise for crime and with relentless prosecution of criminals. I will enforce the law courteously and appropriately without fear or favor, malice or ill will, never employing unnecessary force or violence and never accepting gratuities. I recognize the badge of my office as a symbol of public faith, and I accept it as a public faith, and I accept it as a public trust to be held so long as I am true to the ethics of the Police Service. I will constantly strive to achieve these objectives and ideals, dedicating myself before God to my chosen profession – Law Enforcement.



MARTI D. FELKER
Chief of Police

CITY OF TOLEDO OHIO



DIVISION OF POLICE

PHILIP A. HAWKEY
City Manager

RAYMOND J. NORRIS
Safety Director
Commissioner - Traffic Engineering

Safety Building
525 N. Erie Street
Toledo, OH 43624-1345

MARTI D. FELKER
Chief of Police
LEADS OH0480700

March 31, 1988

Phillip A. Hawkey
City Manager
One Government Center
Toledo, Ohio 43604

Dear Mr. Hawkey:

I am indeed privileged to submit the Police Division's annual report for the year in which Toledo celebrated its sesquicentennial. It is an honor I share with former Chief, John Mason.

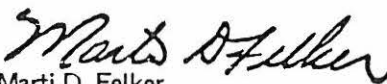
During its one hundred and fifty years, the City has evolved into a major urban center with an international shipping port and a multifaceted economic base of industrial, service, and commercial enterprises. The Police Division also has grown during its one hundred and twenty years of existence, from one with a total manpower of fifteen officers and an annual budget of \$21, 980 to one which has an authorized strength of seven hundred and fifty officers, fifty-six civilian personnel, and has an annual budget of \$40,571,942.

No doubt the challenges confronting City Government were many, and diverse in nature, at various periods during the City's development. In today's state of urban affairs, an unfortunate reality facing many communities is that their crime problems are in part, a reflection of the drug situation. I can assure you that all members of the Division are committed to attacking this nemesis. During the past year, the Vice-Metro Unit increased its drug related arrests by nearly forty-three percent, as well as increasing the quantity of drugs seized in dollar amount from \$2,697,303 in 1986 to \$4,437,654; an increase of nearly sixty-five percent.

In addition to intensifying our efforts to combat the drug problem, I have authorized the formation of a Forfeiture Unit, whose primary purpose will be to institute civil forfeiture proceedings, in conjunction with the Lucas County Prosecutor's Office, against individuals who use or derive personal assets during the course of criminal conduct. Forfeited assets will be used for law enforcement purposes in the fight against crime in the community.

I am convinced that the efforts of the Forfeiture Unit, together with those of the dedicated men and women of the Division, will serve to enhance the quality of life for all residents of the community, and make Toledo's image truly one of an All American City.

Respectfully Submitted,


Marti D. Felker
Chief of Police

TOLEDO CITY GOVERNMENT

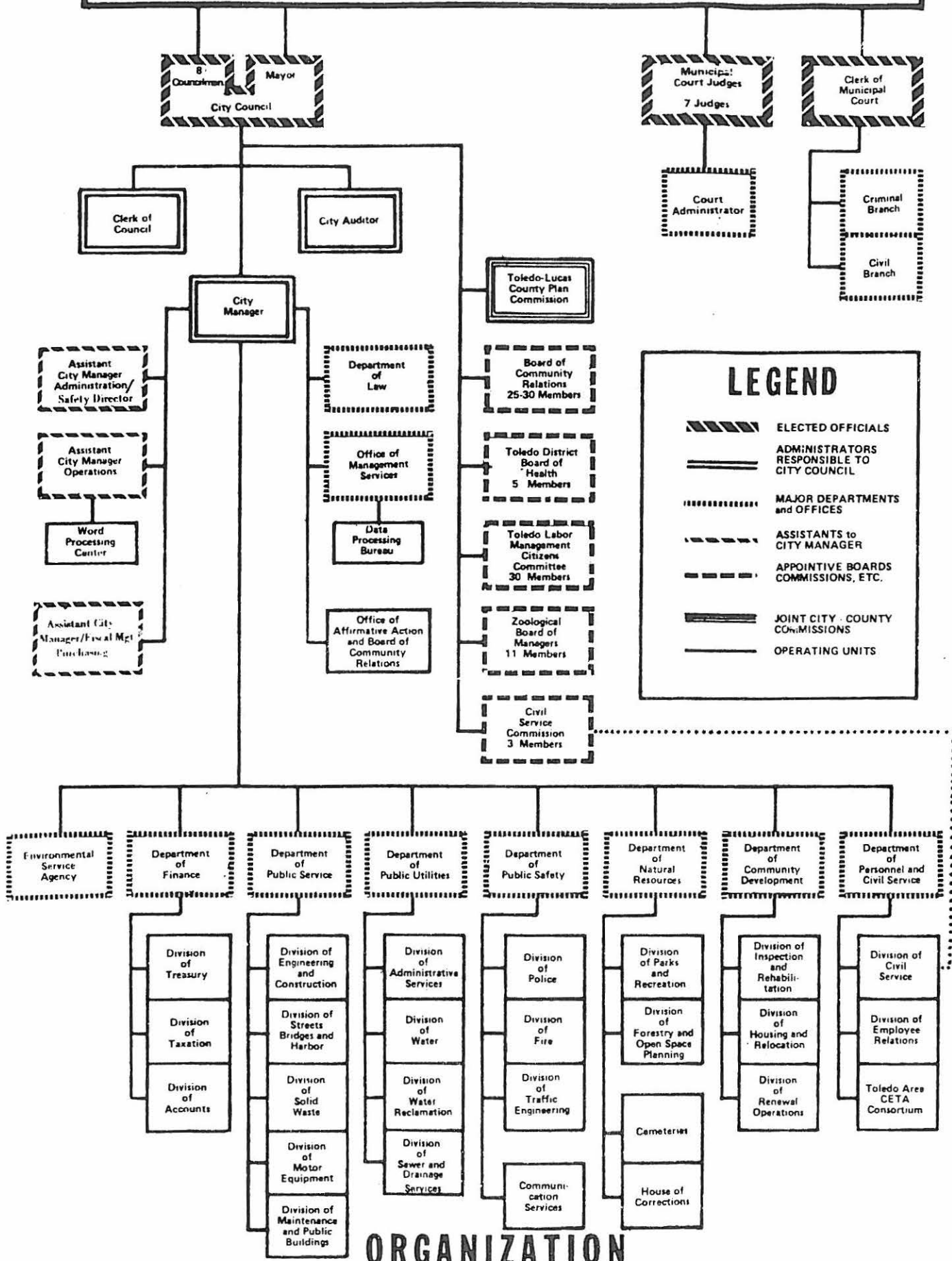
Toledo, Ohio's fourth largest city, is the seat of Lucas County. It is located on the western shore of Lake Erie and is the major trading center for Northwestern Ohio and Southeastern Michigan. It's 344,000 residents live in an 86 square mile area. Toledo, the "Glass Capital of the World" is one of the nation's most important distribution centers.

Toledo is governed by a nine-member council, elected at large, and led by the mayor, who is directly elected by the people. The City Manager is the administrative head of city government and discharges Council's directives.

The Toledo Police Division is headed by the Chief of Police, who is under the administrative control of the Director of Public Safety. The Division motto is:

"To Protect and Serve"

VOTERS

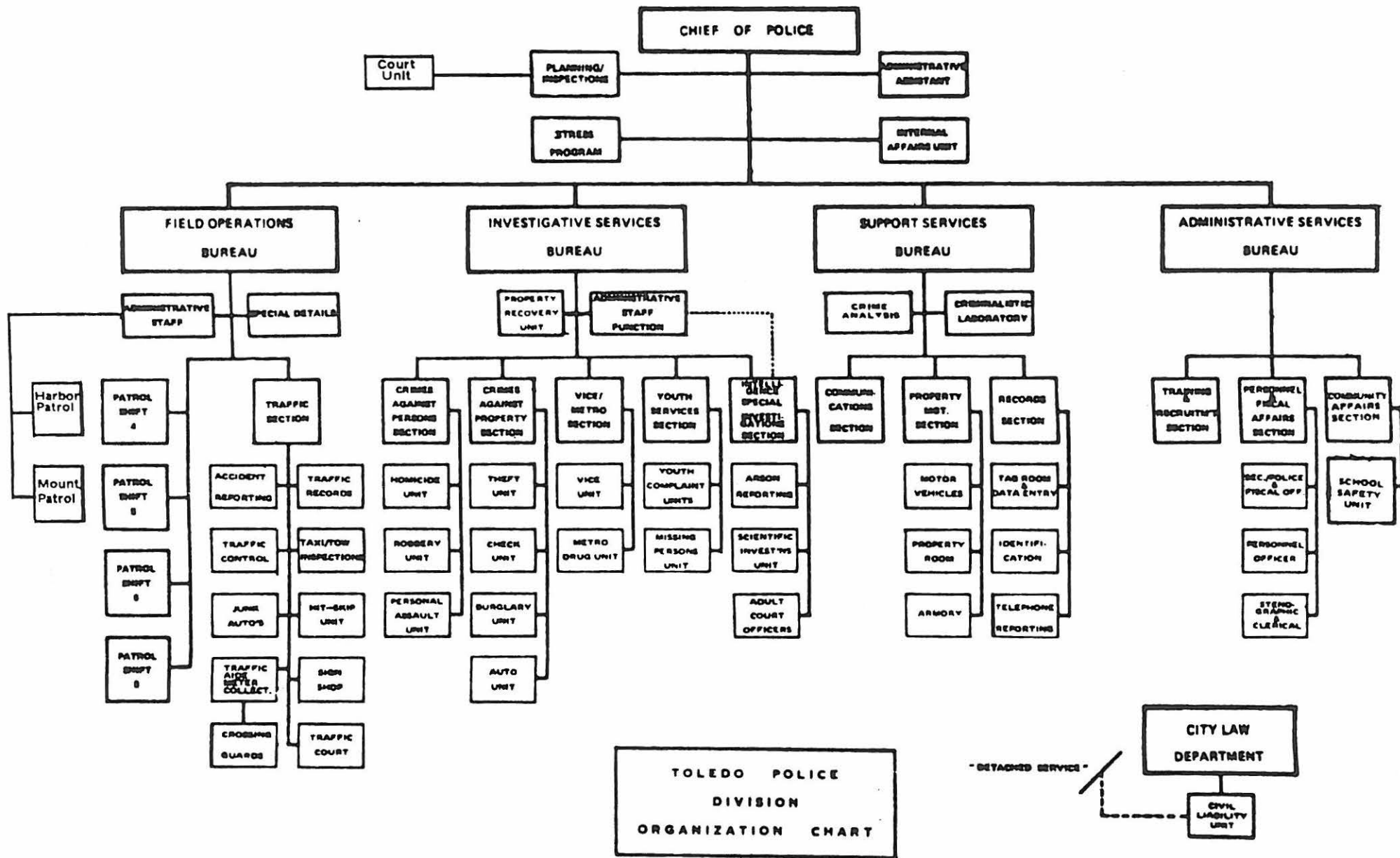


LEGEND

- ELECTED OFFICIALS
- ADMINISTRATORS RESPONSIBLE TO CITY COUNCIL
- MAJOR DEPARTMENTS and OFFICES
- ASSISTANTS to CITY MANAGER
- APPOINTIVE BOARDS COMMISSIONS, ETC.
- JOINT CITY - COUNTY COMMISSIONS
- OPERATING UNITS

ORGANIZATION

CITY OF TOLEDO, OHIO



PREPARED BY PLANNING/INSPECTIONS:



PART II
ITEMS OF INTEREST

HISTORY OF THE TOLEDO POLICE DIVISION

1836

The City of Toledo was incorporated by an act of the State Legislature.

1837

The first City Charter is written, Calvin Comstock was appointed as the first City Marshall. Prior to that, justice was administered by the Justice of the Peace and his constables.

1840-1850

The population of the city rose to 3,827 people from 1,220.

1852

A volunteer police force was authorized by the City Council with the same police powers as the City Marshall.

1853

By Council Resolution, the 'night watch' was initiated with a watchman for each of the four wards to patrol only during the night. The mayor had the right to appoint and regulate as he deemed necessary, with the advice of Council. The City Marshall was designated as the Captain of the Night Watch.

1865

The City Marshall was made a part of the Police Board. City Council Resolution stated, 'If the Police Board shall deem it necessary at anytime, they may detail one or more of the police of the city to serve as Day Patrolman.' This was the first time authorization had been given for a daytime police officer.

1867

Because of the increase of Toledo's population (20,000), Toledo advanced to a City of the First Class in grade, and was invested with a local municipal government, including a Metropolitan Police Force. The Clerk of Council was instructed to begin paying salaries to police officers. Prior to this, any pay which the police had collected was through private contributions. Needless to say, those who contributed the most were used to getting the most protection. Thus the City Marshall and the volunteer police force was deposed. Three Police Commissioners were selected. Henry Breed was named Captain (Chief) of Police, and thirteen police men were hired as well as a Sergeant and a Turnkey. At that time each Patrolman was paid \$720 per year. The total annual budget was \$21,980. This included equipment maintenance, all salaries, and the upkeep of the prisoners in the City Jail. Patrolmen were assigned to work fourteen hours on the Day Shift, and ten hours on the night shift, seven days a week.

The first Detective, Elijah Hanks, was officially appointed. The Chain Gang was abolished in Toledo and the first In-Service Training was offered. This training was the reading of the Department Rules and Regulations. This was conducted at least once a week by the Captain.

1869

The first officer to be fired from the Toledo Police Force was one Henry Nellis, who was found sleeping on duty.

1871

Two Sanitary Policemen were appointed. Their duties consisted of fumigating homes where needed and enforcing quarantines.

1874

By City Ordinance, the Title of Superintendent of Police was changed to Chief of Police. The work hours for the officers was shortened to approximately 12 hours for the day shift, and 10 for the night shift. The rank of Roundsman was established with the duty to go to each District Beat and make sure that the assigned beatman was there, and to collect any information the beatman may have. This was the only means of communication between headquarters and the street officer.

1879

The limited use of photographs was initiated for criminal identifications.

1880

The first Metropolitan Police Board was instituted, with the local board members selected by the Governor. Subsequently, the members were elected by the public for four year terms.

The rank of Detective was permanently established by the Board of Police Commissioners. The City allowed for the appointment of a maximum of ten officers to the rank of Detective. William Scott became the first Chief of Police under the Metropolitan System.

1882

The City adopted the 'Bertillion System' of measurements, as well as the 'Scar and Mark' system for criminal identification. The Bertillion System involved the measuring of almost every part of the body, including the circumference of the head, the total span of the arms, etc. The scar and mark system involved the detailed listing of any scar or mark on the prisoner's body.

1883

The first patrol wagon (horse & buggy) was purchased to be used for the transportation of prisoners. Prior to this, all prisoners had to be walked to the station for booking. In the case of highly intoxicated persons, this often became a problem. One industrious officer solved this problem by borrowing a wheelbarrow for these situations.

1890

The City began to install over 100 alarm boxes in various neighborhoods through which the beat officer could be summoned.

1898

A police substation was opened at 612 Lagrange Street. Prior to this, the only police station was located at 20 North Superior Street.

1899

The population increased (115,674) to the point where it now became necessary for an officer to be assigned to traffic duty. A man was assigned to the Summit & Cherry Street intersection.

1900

By this time, Toledo encompassed 28 square miles and employed 100 patrolmen, 11 command officers and three Detectives. The City had two prisoner wagons, one at each station.

1903

With the increased use of photographs, the Police Department established a Rogues Gallery, and began to do away with the Bertillion System of Identification.

1905

The use of fingerprinting was adopted for identification purposes.

1907

The City purchased it's first motorcycles for use by the officers. At first they were used only for emergency reasons. Reports indicated that two Detectives, assigned to nights, were dispatched to the scene of a burglary in progress on their motorcycles. After apprehending the burglars, they did not wish to waste time waiting on the horse and buggy wagon, so they drove the prisoners back to the station on the handlebars of their motorcycles at speeds up to 50 MPH.

1908

Whereas horses played a major role in police history elsewhere, Toledo did not adopt a mounted unit until now. It was the duty of each officer assigned to the Mounted Unit to care for his horse, including feeding, cleaning and grooming. The Mounted Police Squad lasted until 1928.

1911

The Police Department added a full Motorcycle Squad consisting of 20 men.

1919

The position of Turnkey was filled with a sworn police officer rather than a civilian. The first Police Woman was assigned with the duty of watching dancehalls and other places of public amusement, as well as handling certain cases involving women. The remainder of her time was spent on patrol.

1924

The Toledo Police Pistol Range was dedicated. The range was built by members of the Department and was reported to be one of the best in the country if not the World. It was estimated at the time to have been worth \$100,000 but the total construction cost was \$5.60. Most of the materials were donated, and the labor was performed by the officers themselves.

1925

The Police Department moved from the 80 year old structure on Superior Street to the newly built Safety Building at 525 North Erie Street, its current headquarters.

1926

The Women's Bureau was formed. This Bureau handled cases of missing girls and women, and any other cases involving women. The woman Sergeant was Margaret Slater who headed it for 29 years. In a history of the police department by Harold Towe, professor at the University of Toledo, he stated, 'It must be said that the Women's Bureau has, from its inception, been an honest to goodness police unit, making it's own investigations, check-ups, and arrests. They have been Police Officers, not social workers.'

Then Chief of Police, Harry Jennings, instituted the concept of probation in the courts by establishing the 'Reclaiming and Probation Division' of the Department. Police Officers assigned, interviewed first offenders prior to court, and made a recommendation to the court. If the offender was released, the officer worked closely with him for approximately six months.

1928

The memorial monument to police officers killed in the line of duty was dedicated this year. It was said to be the only memorial in the country conceived of and built by police officers. It was regarded as a fine work of art and architecture.

1930

The Department installed radio communications. Two way radios were installed in all police vehicles. The Police Department began broadcasting on Station WRDQ.

1932

The first police school was instituted with private qualified citizens donating their time and expertise. The first class lasted eight weeks. The Identification Bureau opened nights. Previously, it had only functioned during the day shift.

1934

The establishment of a school for traffic violators took place. The judge now had the option to sentence violators to the school, conducted by police officers, to improve the violator's basic driving skills.

1937

The Crime Laboratory was established. Prior to this time, limited scientific and chemical analysis was done, but the facilities at the University of Toledo Laboratory were utilized.

The Juvenile Bureau was created, although somewhat limited in it's functions. Police began to expand their duties from apprehension to prevention. The entire concept of law enforcement, or police work, was changing.

The Accident Investigation Squad also began this year. In 1937 there 900 auto accidents in the City of Toledo.

1938

The Toledo Police Academy was initiated and graduated it's first class.

1940

Nine policemen began flight training to become 'Policemen of the Air', as soon as the department received it's first airplane.

1948

McCarthy Stadium in Highland Park was dedicated to Officer John McCarthy who was killed in the line of duty. His name, as well as the other 21 officers killed before him, was commemorated on a plaque at the Stadium.

1949

Radar was adopted by the department and was first used to trap unsuspecting speeders.

1952

A Police Library is begun under the guidance of Inspector Roth of the Police Academy.

1953

Due to a high injury rate, the two-wheel Motorcycle Squad was abolished.

Harbor Patrol started on a part-time basis with a borrowed boat.

1955

The City was given a retired U.S. Coast Guard boat to enforce the water laws in the Toledo area. This was the beginning of the Harbor Patrol, on a full-time basis.

1958

The police work week was reduced from 48 hours to 44 hours. (It was not until 1960 that the 40 hour work week was implemented.)

1960

The uniform was altered when the TPD went to the white trimmed hat to get away from the 'bread truck' driver look. Also, the uniform began to sport a new look with the adoption of the new shoulder patch. This patch is the one still worn today.

1963

Due to major annexation in the metropolitan area, police patrol responsibility is now 76.8 square miles and the population is over 370,000 people. In less than two years, the City has grown over 19 square miles. The police budget -- \$3.3 million.

1964

Patrol districts are reorganized from 17 basic beats to 20. In addition, the Police Division has initiated an 8:00pm - 4:00am 'Selective Enforcement' shift to help supplement the district patrol units.

The Police Auto Pound was discontinued and a private garage was authorized to take over the storage of vehicles in police custody.

1966

Portable 'Walkie-Talkie' Radios were introduced to the TPD, with great success.

1970

Officer William Miscannon was fatally shot at the corner of Junction & Dorr Streets, September 18.

1973

Carol Tipton became the first woman to graduate from the Toledo Police Academy with the rank of Patrolman. The use of one-man patrol cars was begun.

1974

Air-conditioning was placed into marked police vehicles for the first time in our history.

1976

The Scott Park District Police Station was opened and was the first new police facility for the police division since 1925.

1977

The Toledo Police Division closed the men's and women's jails and began booking all prisoners at the newly built Lucas County Corrections Center. This ended an era which began in 1837 when the City Jail was first opened.

1980

All Field Operations Bureau and Investigative Personnel were pulled out of the Scott Park District Station and the Division was once again totally centralized. The facility at Scott Park would then house the Community Relations and the Crime Prevention Sections.

1982

Due to severe fiscal problems, almost all civilian police employees are laid off. Many returned to their jobs later on in the year after the Police Division worked shoulder to shoulder with other city agencies to help pass an increase in the payroll income tax.

1984

Due to increased resources as a result of economic growth and increased municipal tax revenues, the TPD completed a total restoration of services to the public. Manpower was brought up to authorized strength of 725, the first time since 1978. The Toledo Police Academy graduated the largest class in its history - 121.

Beat patrol officers return to the revitalized downtown area and in particular, Portside, the downtown Marketplace.

1985

City Council approves the hiring of 25 additional officers, raising the authorized strength to 750 officers, the most since the strength was reduced in 1977 to 725. The Division's records keeping responsibility was computerized. Redistricting took place doing away with the basic 22 districts and replacing it with a flexibeat system consisting of 7 primary sectors with numerous beats within each. The traditional 2 or 3 digit call numbers are replaced with a number-letter combination such as 3-D-14. Horses will once again be seen in downtown Toledo and the area parks as Chief John Mason implements the Mounted Patrol. Two Sergeants and nine patrol officers were selected to undergo training at the Detroit Mounted Police Stables and will become active in March of 1986.

1986

The Toledo Police Mounted Patrol Unit begins operation on March 3, 1986. It becomes an instant success with the public. They are the first horse-back officers in Toledo since 1928.

1987

On August 26th Marti D. Felker was appointed as Chief of Police, succeeding John Mason, who retired in June.

November 20th marked a milestone in the Division's history with the promotion of the first female, Shirley Green, to the rank of lieutenant.

POLICE CHIEFS

Past and Present

<i>Henry Breed</i>	<i>1867-1868</i>
<i>William P. Scott</i>	<i>1868-1871</i> <i>1879-1881</i>
<i>Joseph A. Parker</i>	<i>1871-1872</i>
<i>Josiah C. Purdy</i>	<i>1872-1879</i> <i>1883-1885</i>
<i>Egbert E. Morse</i>	<i>1881-1882</i>
<i>General James Steedman</i>	<i>1882-1883</i>
<i>Edward O'Dwyer</i>	<i>1885-1892</i>
<i>Benjamin Raitz</i>	<i>1892-1902</i>
<i>Perry D. Knapp</i>	<i>1902-1914</i>
<i>George A. Murphy</i>	<i>1914-1915</i>
<i>Henry J. Herbert</i>	<i>1915-1922</i>
<i>Harry Jennings</i>	<i>1922-1928</i>
<i>Louis J. Haas</i>	<i>1928-1932</i> <i>1932-1933</i>
<i>William D. Delehanty</i>	<i>Feb. 1932</i> <i>Mar. 1932</i>
<i>Daniel T. Wolfe</i>	<i>1933-1936</i>
<i>Ray E. Allen Sr.</i>	<i>1936-1956</i>
<i>Anthony A. Bosch</i>	<i>1956-1970</i>
<i>Robert J. Duck</i>	<i>1971-1974</i>
<i>Corrin J. McGrath</i>	<i>1974-1978</i>
<i>Walter Scoble</i>	<i>1978-1980</i>
<i>John W. Mason</i>	<i>1980-1987</i>
<i>Marti D. Felker</i>	<i>1987-Present</i>

IN MEMORIAM

Toledo Police Officers Killed in the Line of Duty

<i>John Hassett</i>	<i>March 5, 1880</i>
<i>Charles Russell</i>	<i>October 9, 1906</i>
<i>James Boyle</i>	<i>May 5, 1908</i>
<i>Harry Smith</i>	<i>September 25, 1911</i>
<i>Albert Schultz</i>	<i>August 7, 1914</i>
<i>Kaiser Bartecki</i>	<i>January 21, 1915</i>
<i>Adolph Reimer</i>	<i>August 2, 1915</i>
<i>Louis Jaswiecki</i>	<i>March 31, 1918</i>
<i>William Bather</i>	<i>May 27, 1919</i>
<i>George Zapf</i>	<i>September 23, 1919</i>
<i>Harry Dowell</i>	<i>June 9, 1921</i>
<i>H.M. Mossberger</i>	<i>June 9, 1921</i>
<i>William H. Kress</i>	<i>August 1, 1921</i>
<i>Charles McGuire</i>	<i>December 22, 1921</i>
<i>William A. Reed</i>	<i>December 28, 1921</i>
<i>Fritz Bacon</i>	<i>August 13, 1922</i>
<i>William J. Martin</i>	<i>September 6, 1921</i>
<i>William H. Julert</i>	<i>January 29, 1924</i>
<i>Walter Mullin</i>	<i>May 12, 1925</i>
<i>George D. Zientara</i>	<i>April 16, 1928</i>
<i>Edward Briest</i>	<i>May 19, 1931</i>
<i>Edward D. Keim</i>	<i>August 11, 1932</i>
<i>Harvey O'Neil</i>	<i>November 8, 1936</i>
<i>Fred W. Disel</i>	<i>May 5, 1944</i>
<i>John McCarthy</i>	<i>January 7, 1947</i>
<i>Harold Stevens</i>	<i>July 3, 1948</i>
<i>Albert Fadell</i>	<i>November 18, 1948</i>
<i>Walter Boyle</i>	<i>December 8, 1961</i>
<i>Donald Brown</i>	<i>June 12, 1962</i>
<i>William Miscannon</i>	<i>September 18, 1970</i>

LEST WE FORGET



*Chief John Mason
Retired: June 1, 1987*

1987 RETIREMENTS

Off. George Atkins
appointed: 10-1-58
retired: 4-28-87

Det. Gene Belinske
appointed: 11-1-59
retired: 3-5-87

Off. Gerald Bryce
appointed: 4-1-66
retired: 7-16-87

Off. Frank Calipetro
appointed: 10-1-65
retired: 1-23-87

Det. Eugene Fodor
Appointed: 11-1-59
Retired: 12-31-87

Det. Duane Frantz
appointed: 7-1-69
retired: 10-8-87

Det. Richard Gruppi
appointed: 11-1-59
retired: 12-31-87

Off. John Helman
appointed: 4-1-59
retired: 12-31-87

Sgt. Ronald Kazmierski
appointed: 10-1-56
retired: 12-31-87

Lt. William Kolinski
appointed: 10-1-56
retired: 11-6-87

Off. Gerald Kwiatkowski
appointed: 10-1-58
retired: 12-31-87

Chief John Mason
appointed: 10-4-63
retired: 6-1-87

Off. Ted Montague
appointed: 10-4-63
retired: 6-25-87

Off. Gary Monto
appointed: 3-30-73
retired: 10-8-87

Sgt. Joseph Morrin
appointed: 7-1-60
retired: 12-31-87

Off. Joseph Roslin
appointed: 5-15-64
retired: 9-3-87

Off. Raymond Sanchez
appointed: 7-30-82
retired: 9-3-87

Off. William Schaub
appointed: 10-1-65
retired: 8-6-87

Det. William Thompson
appointed: 11-1-59
retired: 11-9-87

Off. Gene Walters
appointed: 9-16-55
retired: 12-31-87

Off. Thomas Warnka
appointed: 10-1-58
retired: 12-31-87

Sgt. Walter Zale
appointed: 9-16-55
retired: 6-18-87

Det. Andrew Zsigray
appointed: 11-1-59
retired: 7-16-87

DIVISION SERVICE AWARDS

Medal of Valor

... The Division's highest award
for exceptional bravery

Sgt. Carl Latscha
Off. Gerald Matwiejczyk
Lt. Michael Navarre
Off. Randal Pepitone
Off. Larry Seely
Off. Scott Smith

Medal of Meritorious Service

... For service beyond what is
normally expected of an officer

<i>Det. Carl Baron</i>	<i>Sgt. Carl Latscha</i>
<i>Off. Wm. Boardman</i>	<i>Off. Vincent Mauro</i>
<i>Off. Alvin Cavanaugh</i>	<i>Sgt. Robert Maxwell</i>
<i>Sgt. Leo Cutcher</i>	<i>Off. Keith McClellan</i>
<i>Off. Michael Early</i>	<i>Off. Michael McGee</i>
<i>Off. Martin French</i>	<i>Off. Timothy Meyers</i>
<i>Off. Daniel Gardner</i>	<i>Det. Daniel Navarre</i>
<i>Off. Curtis Jewell</i>	<i>Off. Lisa Sepeda</i>
<i>Off. L. Katafiasz</i>	<i>Sgt. David E. Smith</i>
	<i>Off. Brian Vasquez</i>

Professional Service Award

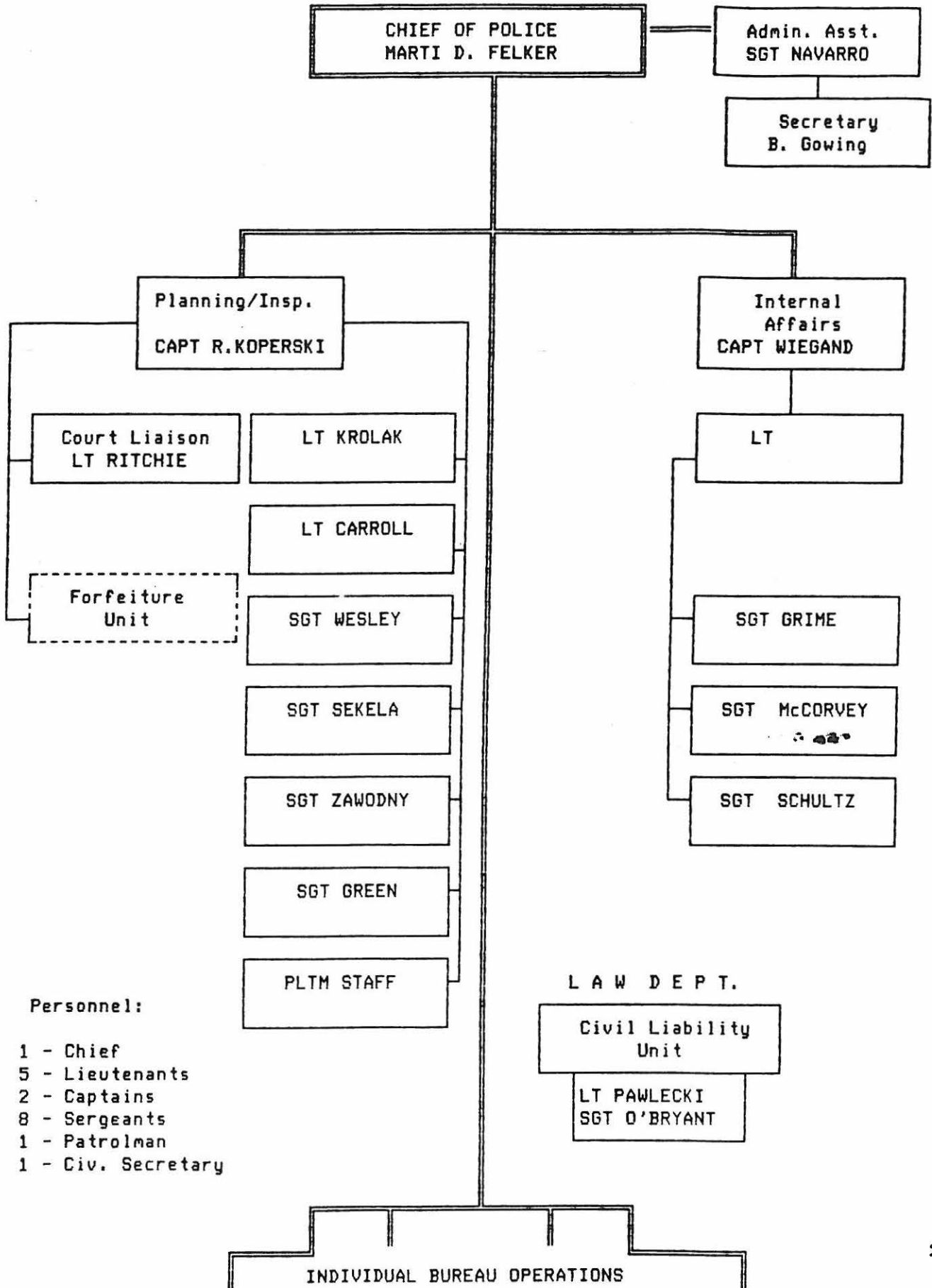
... For an officer who has maintained
a continuous record of exceptional
performance

<i>Lt. David Barkman</i>	<i>Lt. Robert Krolak</i>
<i>Off. Charles Beck</i>	<i>Sgt. Joseph Morrin</i>
<i>Off. Leon Besecke</i>	<i>Off. Gerald Myers</i>
<i>Off. Gary Burks</i>	<i>Off. Leonard Polcyn</i>
<i>Off. Thomas Dumas</i>	<i>Off. Dale Siefke</i>
<i>Off. Robert Heubner</i>	<i>Off. Reid Werner</i>

PART III

POLICE ADMINISTRATION

(As of: DEC 1987)
 ADMINISTRATION
 TOLEDO POLICE DIVISION



Personnel:

- 1 - Chief
- 5 - Lieutenants
- 2 - Captains
- 8 - Sergeants
- 1 - Patrolman
- 1 - Civ. Secretary

ADMINISTRATIVE STAFF

ADMINISTRATIVE ASSISTANT

The Administrative Assistant to the Chief of Police has many responsibilities in representing the Office of the Chief. He represents the Chief at meetings and meets with neighborhood groups regarding specific problems in the community. He also screens citizen complaints that are directed to the Chief's office and responds to complaints and inquiries that come from other city agencies including the Mayor's Office, the City Manager's Office and from individual councilmen as well as council referrals. Other duties include functioning as the news media liaison officer, Chairman of the Award's and Safety Committees and coordination of the Outside Employment (Off-Duty) request of all sworn personnel.

CIVIL LIABILITY INVESTIGATION UNIT

This section provides a means of preparing complete and effective defenses in civil cases filed against the City of Toledo, its Officers and its employees. This investigative unit allows for the early and effective investigative involvement in tort liability matters, thus safeguarding and preserving information and evidence necessary in defending a lawsuit.

PLANNING/INSPECTIONS SECTION

This diverse section has dual responsibilities as it's name implies. First is to develop the planning process that anticipates problems and suggests solutions to these problems. Planning suggests and develops plans that improve police services in furthering Division goals. They also review policies and procedures to ascertain suitability, determine weaknesses and devise improved methods, as well as formalizing written policies to guide employees in the effective administration of the Division. The second primary responsibility of Planning/Inspections is to conduct formal staff inspections to determine if Division policies, procedures and rules are being adhered to by all Division members. They also provide for the evaluation of systems and resources to make sure that they are being utilized to their maximum efficiency within the guidelines established by Division policy. When deviations are recognized, they then identify the causes and make recommendations to correct and improve. One final phase of this section is that of the Court Unit which serves as liaison to solve problems between the Division and the Municipal and Common Pleas Courts. This unit reviews all precipes to prevent duplication of testimony, attends pre-trials to assure that only the necessary officers are summoned and monitors the courtrooms to assist and supervise those officers appearing in court.

INTERNAL AFFAIRS UNIT

The Internal Affairs Unit investigates, coordinates and/or exercises staff supervision on behalf of the Chief of Police in regards to complaints against, or allegations of misconduct by members of the division. This unit also has the responsibility of presenting all evidence obtained during the investigation, particularly at disciplinary hearings, should they result.

STRESS PROGRAM

The Toledo Police Stress Unit assists police division employees and other city employees as well as their family members in resolving or attempting to resolve alcohol, emotional, marital or other

problems that may be contributing to or causing declining employee job performance. This unit works in conjunction with the City of Toledo Employee Services Program. In assessing problem situations with a client, the Stress Officer appropriately refers the individual to a suitable community resource for treatment. He also carefully screens, becomes familiar with, and maintains a working relationship with people working in many diverse community treatment programs in order to be able to make referrals. This unit is also responsible for developing training programs for the same target population, which address such areas as life style management, stress management, marriage strengthening, alcoholism and others.

DIVISION ADMINISTRATION INTERNAL AFFAIRS

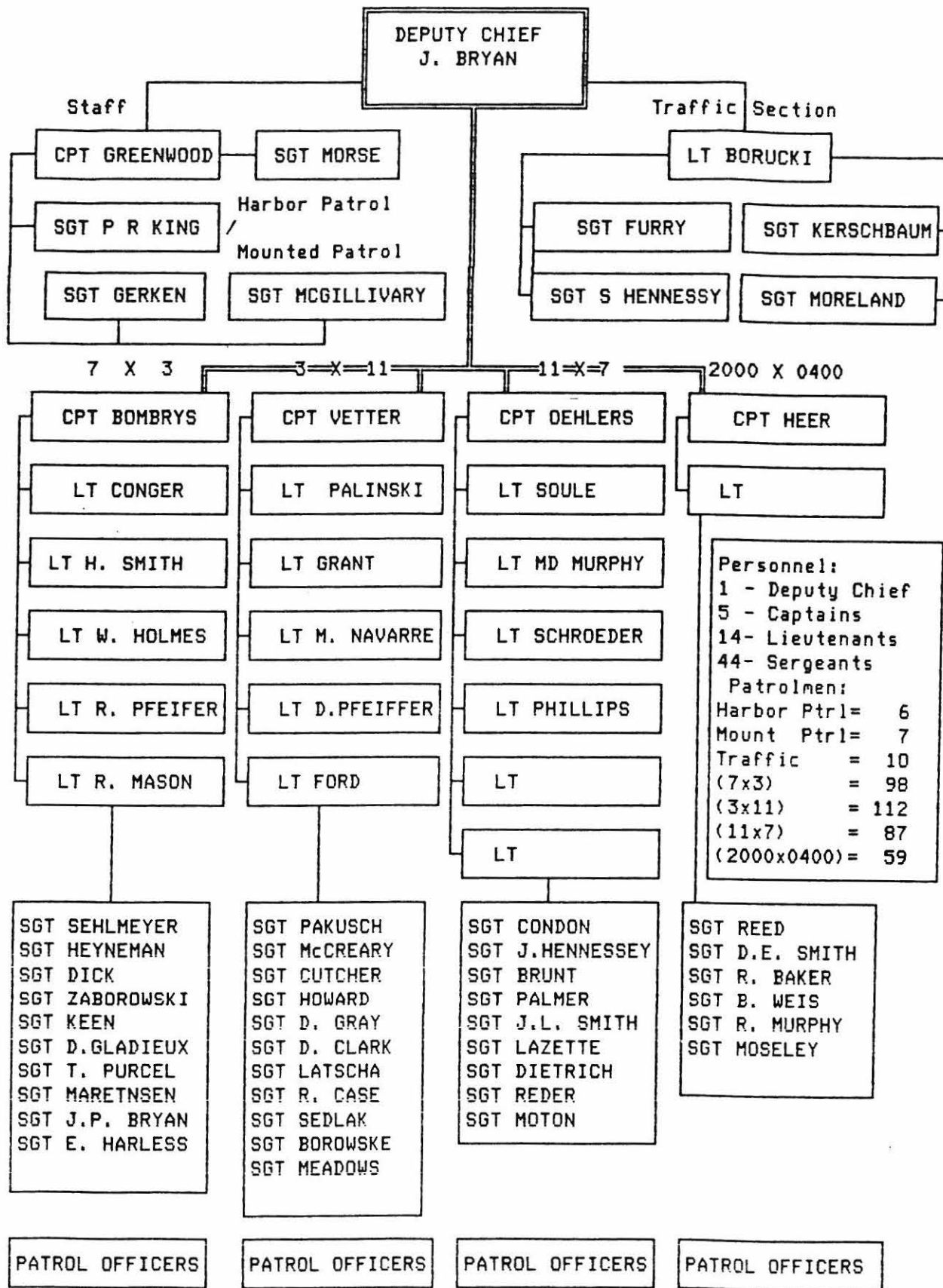
	Citizen Complaints			Division Complaints		
	1987	1986	Change	1987	1986	Change
Jan.	12	17	-41%	13	12	8%
Feb.	23	11	109%	12	10	20%
Mar.	21	18	16.6%	18	11	64%
Apr.	13	9	44%	26	19	37%
May	13	10	30%	13	11	18%
June	16	16	nc	12	16	33%
July	19	28	-47%	11	12	-8%
Aug.	24	17	41%	13	11	18%
Sept.	19	17	12%	21	8	163%
Oct.	14	27	-93%	17	12	42%
Nov.	22	22	nc	12	16	-33%
Dec.	19	16	19%	17	12	42%
Total	215	208	3.3%	185	150	23%



PART IV
FIELD OPERATIONS
BUREAU

FIELD OPERATIONS BUREAU

(As of: DEC 1987)



FIELD OPERATIONS BUREAU

PATROL SHIFTS

The uniformed patrol shifts are the nucleus of the Police Division. Through the assignment of four (4) shifts, they respond to all appropriate calls for service originated by the public, both crime related and service related. This section demands the greatest amount of personnel and the greatest amount of division resources. Fifty five percent of all personnel within the division, both civilian and sworn, are assigned to this extremely important function.

ADMINISTRATIVE STAFF

The Administrative Staff of the Field Operations Bureau performs all of the administrative functions associated with maintaining a 455 person work force. Included within these responsibilities are; maintenance of assignment sheets, uniform clothes accounting, clothing purchase authorization, equipment inspection, and many others.

HARBOR PATROL

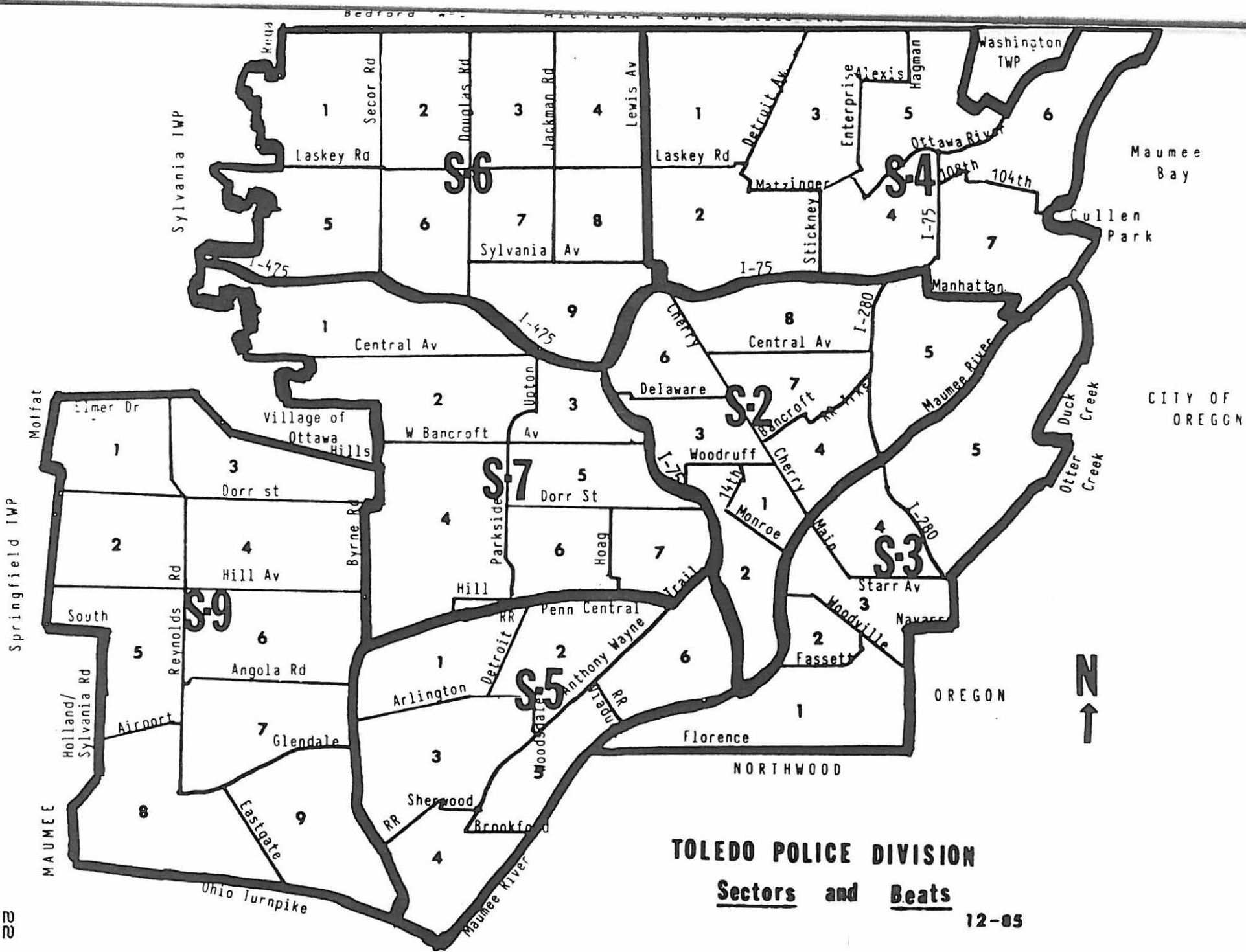
The Toledo Police Division Harbor Patrol Unit patrols all navigatable waters within the jurisdiction of the City of Toledo. They perform such duties as are necessary for maintaining the safety of all persons and property in and along these many miles of water. They have enforcement responsibilities when watercraft violations are observed. The Harbor Patrol also coordinates and assists with search and rescue missions for lost or stranded persons on the waterways. They also tow disabled boats when necessary and remove hazards from the water that may pose a threat to the safety of the watercraft. Other duties include; accident reporting, boat inspections, and assisting the Coast Guard, as well as other agencies upon request. When the Harbor Patrol team is not on the waters, they can be seen at area boat shows, seminars and various other places informing the public in the safe operation of their watercraft.

TRAFFIC SECTION

The Traffic Section of the Toledo Police Division is the main repository of records for all traffic accidents and violations occurring in our city. They administer the School Crossing Guard program, parking meter enforcement and collection, the inspection of all Toledo taxi cabs and the inspection of the tow trucks. In order to keep our streets clear of junk autos, the Traffic section also has the responsibility to see that these ordinances are adhered to. The Traffic section also provides the rest of the Division with the many forms necessary and the technical equipment to be used in an on-going traffic enforcement, accident reduction program.

MOUNTED PATROL UNIT - ESTABLISHED 1985

The Mounted Patrol Unit of the Division will patrol the various high volume business districts and some of the major parks of the city on an as-needed basis. Their primary function is patrol in those areas where high visibility is required for deterrence and where maneuverability is necessary to move through large crowds of people and heavy vehicular traffic. Their duties will be varied but will include traffic control and enforcement, nuisance and crime prevention, crowd control, search and rescue, and any other duties that can best be handled on horseback. In addition to these normal police duties, the Mounted Unit will act as goodwill ambassadors of the City, visiting and assisting at various community events and schools.



TOLEDO POLICE DIVISION

Sectors and Beats

12-05

**FIELD OPERATIONS BUREAU
1987 ACTIVITY SUMMARY BY SHIFT**

Activity	7x3	3x11	8x4	11x7
Traffic Citations	11,727	17,018	12,410	10,867
Parking Tickets	4,618	2,651	2,049	3,632

Mobile Response Calls for Service	7x3	3x11	11x7	Total
1986	56,327	105,554	103,109	264,990
1987	59,032	100,690	105,223	264,945
Change	+2,705	-4,864	+2,114	-45
% Change	+4.8%	-4.6%	+2%	-.01%

Backup Calls

1986	9,595	21,230	37,377	68,202
1987	9,139	19,018	33,756	61,913
Change	-456	-2,212	-3,621	-6,289
%	-4.7%	-10.4%	-9.6%	-9.2%

FIELD OPERATIONS BUREAU
TRAFFIC SECTION

1987
Vehicle Crash Experience Comparison

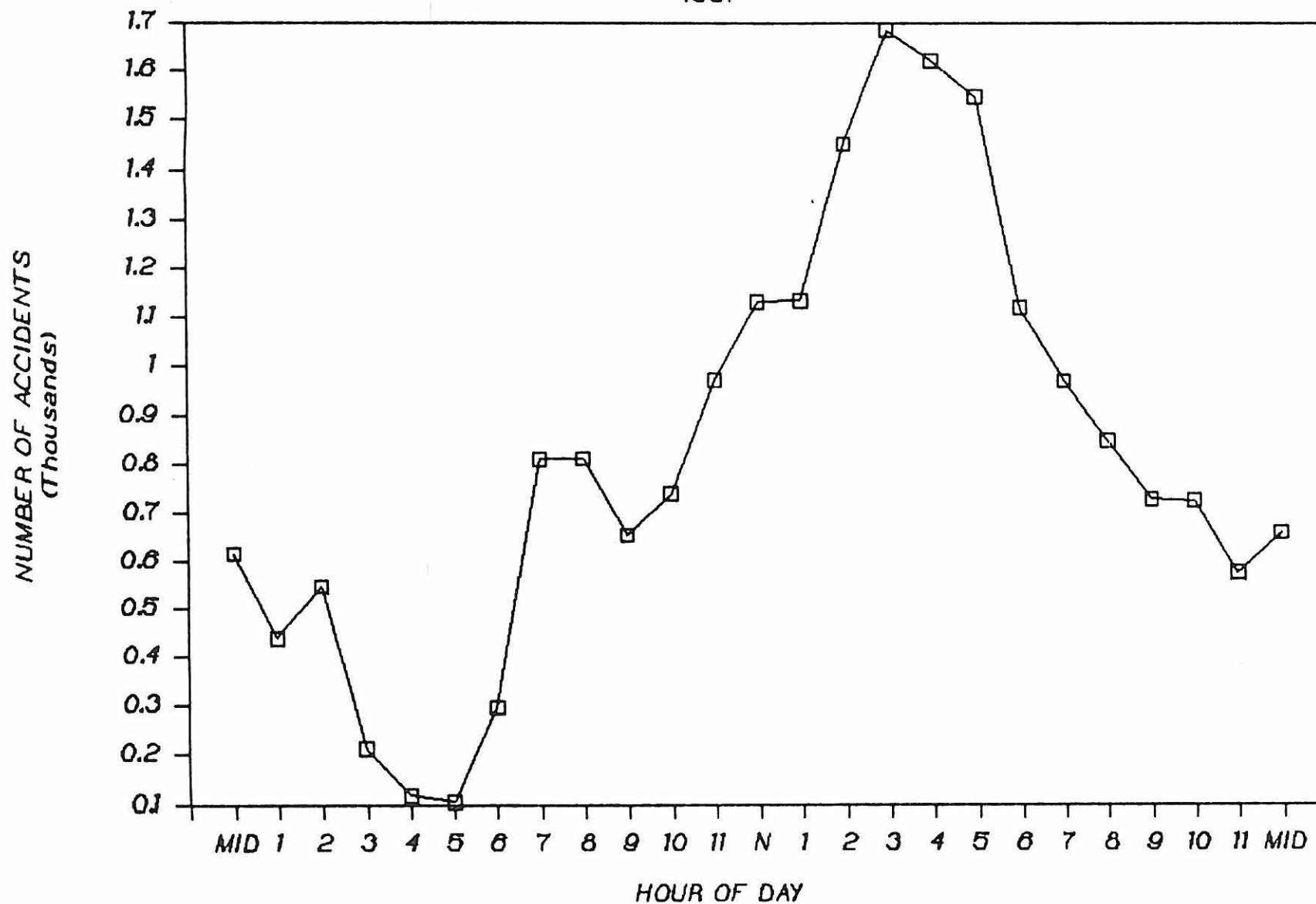
Month	Property Damage	Injury Accidents	Fatal Accidents	Fatalities	Total
Jan.	1,336	472	4	4	1,812
Feb.	946	399	3	3	1,348
Mar.	952	448	3	3	1,403
Apr.	1,046	518	5	5	1,569
May	1,116	564	4	5	1,684
June	1,186	530	2	2	1,718
July	1,037	467	0	0	1,504
Aug.	1,148	533	4	4	1,685
Sept.	1,070	459	3	3	1,532
Oct.	1,346	533	8	8	1,887
Nov.	1,214	527	3	3	1,744
Dec.	1,433	476	4	4	1,913
Total	13,830	5,926	43	44	19,799

1987-1986
Traffic Accident Comparison

Accident Type	1987	1986	% Diff.
Property	13,830	13,622	+1.5%
Injury	5,926	6,128	-3.3%
Fatal	43	51	-15.7%
Fatalities	44	55	-20%
Total	19,799	19,801	-.01%

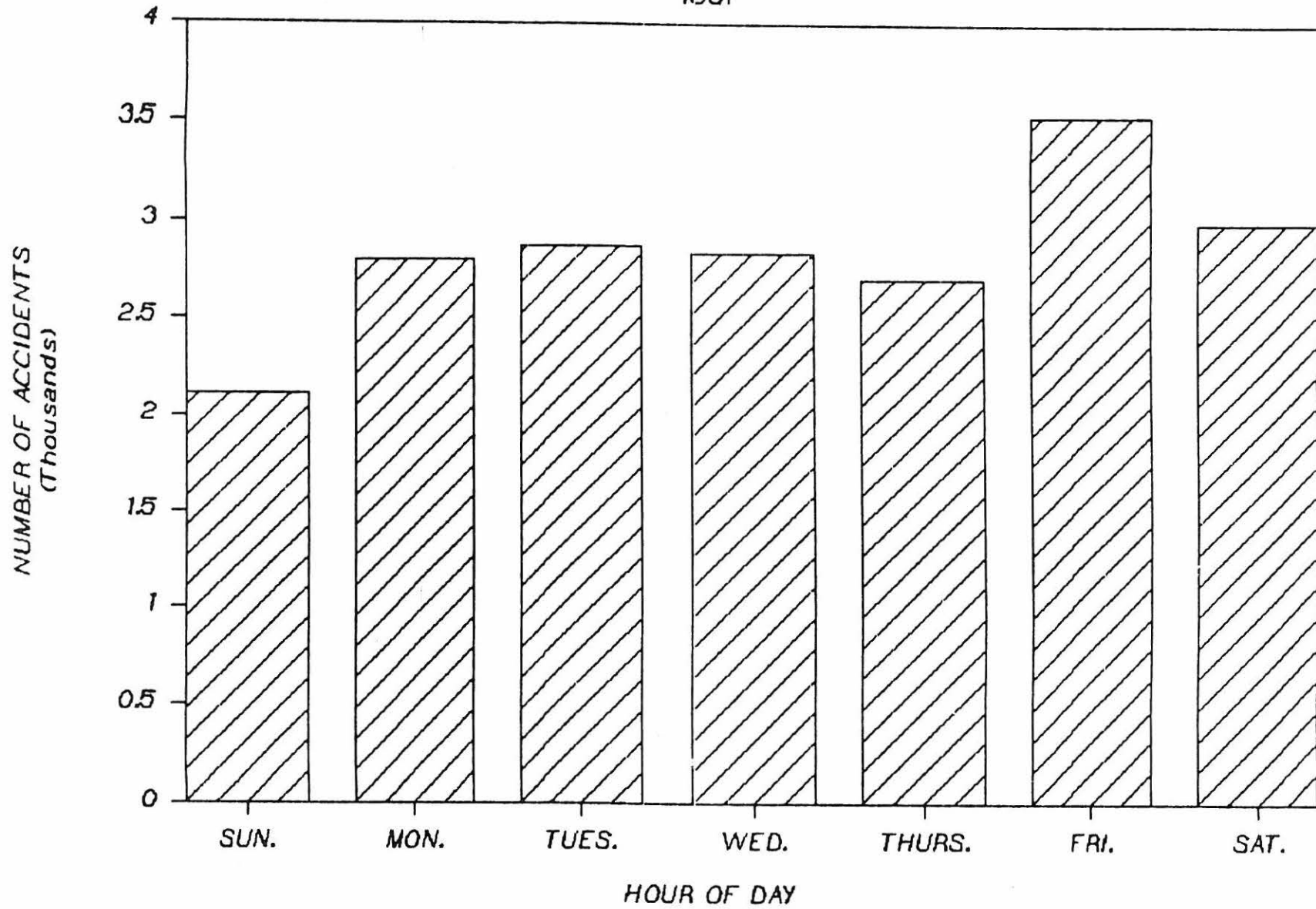
OCCURRENCE OF ACCIDENTS BY HOUR OF DAY

1987



OCCURRENCE OF ACCIDENTS BY DAY OF WEEK

1987



1987
Distribution of Accidents
By Hour and Day of Week

Time	Day of Week							Total
	Sun	Mon	Tues	Wed	Thurs	Fri	Sat	
0001-0100	137	55	69	53	62	70	169	615
0101-0200	119	39	35	34	46	55	110	438
0201-0300	152	31	34	49	52	67	162	547
0301-0400	62	10	15	16	18	36	55	212
0401-0500	30	12	12	4	17	6	37	118
0501-0600	17	18	9	14	9	12	26	105
0601-0700	32	41	58	56	43	48	18	296
0701-0800	30	145	141	147	137	151	57	808
0801-0900	36	129	168	162	121	120	73	809
0901-1000	50	88	122	115	72	107	97	651
1001-1100	60	111	116	99	107	118	125	736
1101-1200	77	158	135	123	155	155	166	969
1201-1300	98	173	187	177	157	196	140	1128
1301-1400	125	173	178	167	152	177	159	1131
1401-1500	120	219	217	230	210	268	187	1451
1501-1600	100	325	278	276	212	312	182	1685
1601-1700	136	260	257	261	219	319	170	1622
1701-1800	146	192	258	230	220	329	172	1547
1801-1900	139	134	152	155	168	195	172	1115
1901-2000	115	125	120	116	135	182	173	966
2001-2100	102	121	95	108	124	163	131	844
2101-2200	85	96	77	90	99	135	140	722
2201-2300	83	81	69	92	94	158	141	718
2301-2400	61	62	68	57	65	144	110	567
Total	2112	2798	2870	2831	2694	3523	2972	19,800

1987
MOUNTED PATROL SUMMARY

Activity	1986 *	1987
Dispatched Calls	992	1451
Arrests	38	100
Traffic Citations	131	268
Parking Tag Issued	703	2517
Parking Violation Warnings	2220	9031
Crime Reports Filed	155	341
Accident Reports Filed	144	301
Citizen Contacts	32,521	87,225
Special Events Assignments	51	70

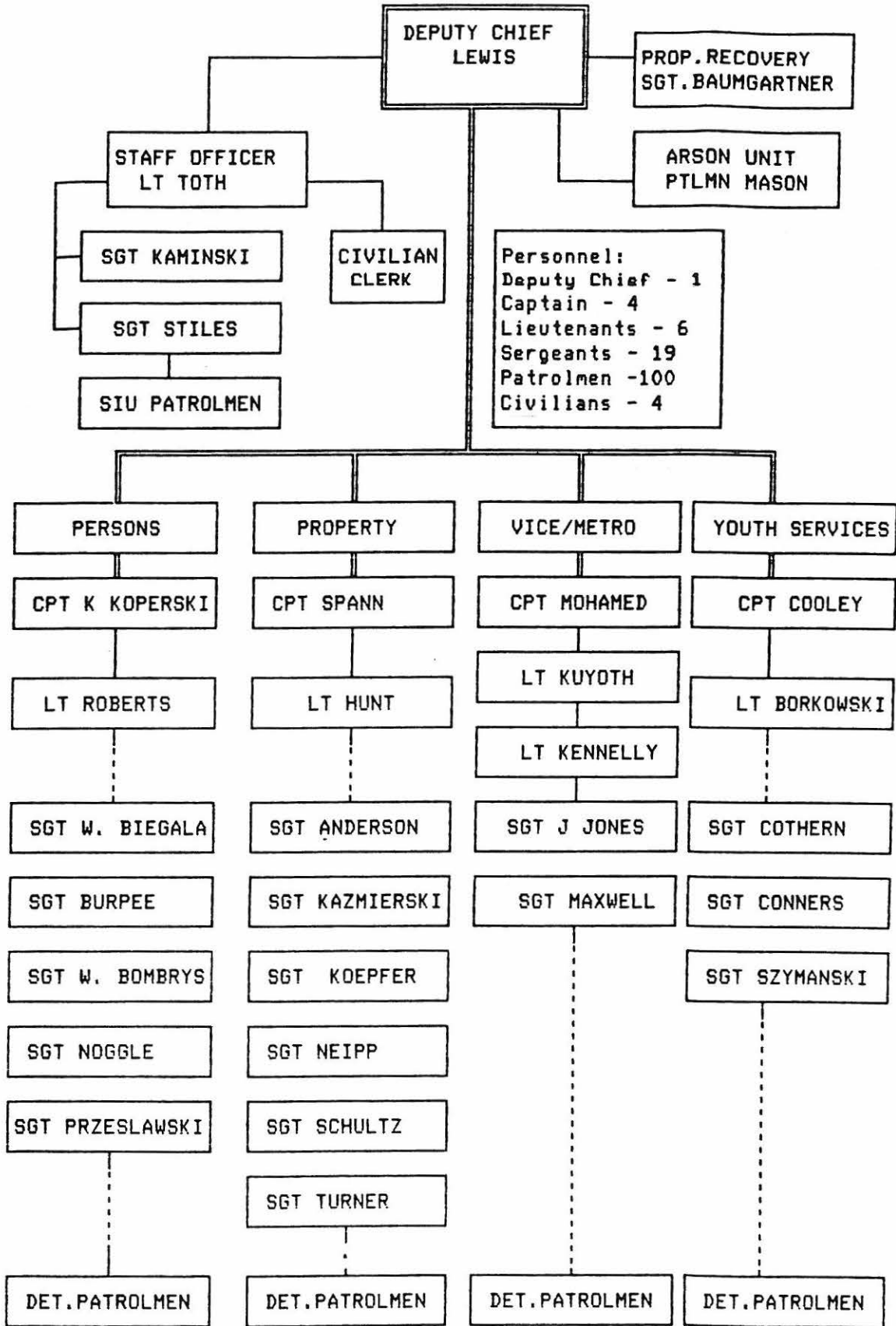
* 1986 data based on eight months of operation

TRAFFIC SECTION
JUNK AUTO UNIT

	1986	1987	Diff.
Complaints Received	2,635	3,659	39%
Private Property Tows	1,197	1,845	+54%
Vehicles Junked	2,106	2,584	+23%
Letters sent to Safety Director	0	329	N/A
Vehicles authorized towed	0	49	N/A
Complaints Cleared	2,544	3,375	+33%
Vehicles Sites Checked	5,762	8,460	+47%
Taxi/Tow Truck Inspections	--	991	

PART V
INVESTIGATIVE SERVICES
BUREAU

(As of: DEC 1987)
 INVESTIGATE SERVICES BUREAU



**INVESTIGATIVE SERVICES BUREAU
ADMINISTRATIVE STAFF
SCIENTIFIC INVESTIGATION UNIT
PROPERTY RECOVERY UNIT**

PROPERTY RECOVERY UNIT

The Property Recovery Unit monitors all of the local pawnshops, junkyards, and gold/silver shops. They also operate undercover STING type operations as well as investigating stolen and recovered property cases.

ADMINISTRATIVE STAFF

The Administrative Staff of the Investigative Services Bureau has the administrative duties to maintain employee time sheets, sick leave, vacation and all other records keeping in relation to this bureau's personnel. They coordinate all roll call training, supervise the civilian desk technicians, and provide a court officer for all felony arraignments and case coordination with the County prosecutor and Grand Jury. This unit also handles the service of all subpoenas to bureau personnel. Due to the extreme public interest shown to this bureau, the Administrative Staff serves as liaison with the press and other news media. Another of their growing responsibilities is the highly successful Crime Stopper Program.

SCIENTIFIC INVESTIGATION UNIT

The S.I.U. visits all major crime scenes with the task of sketching the scene, photographing the scene, search for fingerprints and lifting prints if found. They collect and preserve all physical evidence for future analysis and/or court presentations. Additionally, they attend autopsies when required, recording the findings of the criminal pathologists and collect any evidence attained as a result of the autopsy.

SCIENTIFIC INVESTIGATION UNIT

	1987	1986
Crime Scene Assignments		
Latent Fingerprint Search	887	636
Latent Fingerprint Lifts	420	302
Photography Assignments	802	665
Neutron Activation Analysis Test	81	63
Crime Scene Sketches	20	14
Moulage Casts	16	14
Other Assignments		
Fingerprint Comparisons	401	253
Autopsies Attended	63	35
Polygraphs Administered	134	150

INVESTIGATIVE SERVICES BUREAU CRIMES AGAINST PERSONS SECTION

HOMICIDE UNIT

The Homicide Unit has a wide range of investigative responsibilities from the investigation of purposeful deaths caused by violent means , to simple assault investigations. They also work in close relationship to the Lucas County Coroner and his investigators. They also investigate felonious assaults, aggravated assaults, kidnapping, abduction, and carrying concealed weapons felony offenses. They are also called upon to investigate unattended death situations that are generally not criminal in nature.

ROBBERY UNIT

This unit investigates all commercial, street and financial institution robberies. Suspect auto and suspect photo files are kept to maintain current and past robbery events records in the event of similar offenses occurring. The robbery unit also correlates all information regarding suspects and possible locations for stake-outs with the uniformed units with the intention of on scene apprehension. They are also called upon to conduct line-ups, photo identifications and one-on-one street identifications.

PERSONAL ASSAULT UNIT

This unit investigates all sex related crimes including sexual child abuse, and telephone harassment complaints, excluding prostitution and pornography. They attempt to evaluate and recognize series of similar sex related crimes in order to forward this information to the appropriate street patrol units. An on-going program is working with the Child Sexual Abuse Team at the Medical College of Ohio in order to improve procedures related to the treatment of both victim and offenders. They also work actively with members of Toledo United Against Rape in training programs.

CRIMES AGAINST PERSONS SECTION

	1987	1986
Homicide Unit		
Complaints Received	14,076	13,138
Complaints Investigated	2,431	1,088
Arrests	2,470	2,212
Inactive Complaints	455	469
Unfounded Complaints	9	12
Exceptionally Cleared Complaints	11,030	10,455
Domestic Violence Complaints	5,202	4,062
Homicides	34	21
Felony Complaints	627	633
Misdemeanor Complaints	12,318	11,055
 Robbery Unit		
Complaints Received	1,287	1,088
Complaints Investigated	1,287	1,088
Arrests	228	206
Inactive Complaints	850	819
Unfounded Complaints	41	33
Exceptionally Cleared Complaints	59	70
Commercial Robberies	224	148
Street Robberies	658	615
Purse Snatches	396	312
Financial Institution Robberies	5	9
 Personal Assault Unit		
Complaints Received	2,134	2,046
Complaints Investigated	1,006	1,418
Arrests	360	325
Inactive Complaints	420	533
Unfounded Complaints	70	73
Exceptionally Cleared Complaints	386	505
Felony Complaints	625	534
Misdemeanor Complaints	1,511	1,512
Rapes	318	306
Attempted Rapes	33	32

INVESTIGATIVE SERVICES BUREAU CRIMES AGAINST PROPERTY SECTION

BURGLARY UNIT

The Burglary Unit investigates all residential and commercial breakins that are reported to the police. These investigations include the development of profiles of burglary suspects by examining crime scenes, interpreting physical evidence, interrogating suspects and interviewing witnesses. In order to link suspects and stolen items to the particular offense, the burglary unit provides constant communication with property recovery personnel. Information is collected and then disseminated to the patrol operations in order to advise them on particular burglary patterns. Citizen cooperation is solicited by presenting programs to the community illustrating a realistic picture of the burglary problem, and at which time they explain the role of the responding officers and the investigator assigned to the case.

CHECK SQUAD

This unit provides a complete investigative service pertaining to crimes of forgery and passing of bad checks. They maintain files on active and inactive offenders of these types of crime and of stolen checks as well as check writing machines. One of their primary roles is that of liaison with area banks and commercial lending institutions in disseminating information to assist in apprehending persons involved in forgery and the cashing of bad checks.

AUTO THEFT UNIT

The primary role of this unit is to investigate all phases of auto theft and recoveries in an attempt to establish the pertinent information which will lead to the successful arrest and prosecution of the perpetrator. This unit accomplishes this by maintaining files of stolen and recovered vehicles and by working actively with the uniformed patrol units and adjacent police agencies in their motor vehicle investigations. By maintaining a close working relationship with the various title officers and the Bureau of Motor Vehicles in Columbus, they attempt to identify professional motor vehicle theft rings as well as the routine teenage joyrider. They not only concern themselves with automobiles but also with the theft prevention and investigation of heavy industrial equipment and marine type equipment offenses. Also included in their daily activities is the investigation of altered, concealed, or obliterated vehicle identification numbers and the investigation of vehicle arson.

SPECIAL SQUAD

The Special Squad processes and investigates miscellaneous crimes such as theft, credit card offenses, vandalism, and extortion. They also have the responsibility of serving arrest warrants issued in other jurisdictions when the person sought is thought to be in Toledo. This unit processes all fugitives and U.S. Servicemen who are away without leave.

CRIMES AGAINST PROPERTY SECTION

1987 1986

Burglary Unit

Complaints Received	7,359	6,269
Complaints Investigated	5,944	4,021
Arrests	583	653
Complaints Reduced	1,107	1,261
Unfounded Complaints	137	175
Exceptionally Cleared Complaints	610	561
Residential Burglaries	5,108	4,380
Commercial Burglaries	1,356	1,177

Check Squad

Complaints Received	4,698	5,480
Complaints Investigated	1,212	1,419
Arrests [felony only]	1,007	877
Exceptionally Cleared Complaints	284	346
Misdemeanor Complaints	3,322	3,888

Auto Unit

Complaints Received	2,419	3,092
Complaints Investigated	1,776	1,880
Arrests	517	450
Stolen Auto Complaints	2,341	2,184
Recovered Autos	2,304	2,365
Exceptionally Cleared Complaints	670	233

Special Unit

Complaints Received	21,386	21,205
Complaints Investigated	2,159	2,013
Arrests	3,053	2,958
Unfounded Complaints	80	107
Exceptionally Cleared Complaints	4,003	3,710
Warrants Issued [arrests pending]	4,080	3,708

INVESTIGATIVE SERVICES BUREAU YOUTH SERVICES AND VICE/METRO SECTIONS

VICE-METRO SECTION

The Vice-Metro Unit enforces all laws and regulations which are aimed at reducing or eliminating those activities related to drug trafficking, prostitution, gambling and liquor violations. They review all applications for arcades, bars, phrenologists, massage parlors, and dance halls. Within this area of responsibility they conduct inspections of these types of businesses and they perform background investigations of those persons running the same. This section is also called upon frequently to engage in educational programs dealing with drugs and gambling laws. They also present community awareness programs to schools, churches, and other groups upon request.

YOUTH SERVICES SECTION

This section has the extremely important responsibility of investigating crimes which are committed by or perpetrated against juveniles, with the exception of murder and felony sex offenses. Additionally, they investigate child abuse cases and status offense cases. They are also involved in many family related problems such as Domestic Violence, unruly youths, Contributing to the delinquency of minors and child stealing.

MISSING PERSONS UNIT

The Missing Persons Unit, as its name implies, takes reports of missing people and runaways. They evaluate, coordinate, and investigate with the aim of locating or apprehending these parties. Going even further, they build criminal cases against those adults who willfully harbor runaways in an effort to reduce the number of places juvenile runaways can go with the community. In order to update and improve their operation, they continually stay abreast of National changes that have occurred in this investigative area.

VICE-METRO UNIT

Arrest Summary

Prostitution	847	718
Gambling	55	25
Liquor Violations	90	152
Drug Related Arrests	829	706
Miscellaneous Arrests	347	217
Total	2,168	1,818

Other Activities

1987 1986

Liquor License Applications Processed	262	269
Search Warrants Executed	137	96
Total Value of Drugs Seized	\$4,437,654	\$2,697,303
Public Speeches & Training	42	30

YOUTH SERVICES SECTION

1987 1986

Juvenile Unit

Complaints Received	12,524	12,236
Complaints Cleared:		
By Arrest	3,072	2,721
Cases Adjusted	1,612	1,628
Exceptionally Cleared	2,355	1,714
Inactive	3,144	3,143
Unfounded	394	80
Special Investigations	1,947	2,950

Missing Persons Unit

Local Persons Reported Missing	3,780	3,453
Juvenile Males	1,324	1,119
Juvenile Females	1,564	1,379
Adult Males	505	533
Adult Females	387	422
Local Persons Located	3,767	3,446
Outside Persons Reported Missing	229	249
Juvenile Males	98	112
Juvenile Females	96	106
Adult Males	19	18
Adult Females	16	13
Outside Persons Located	229	251

CRIME STOPPER PROGRAM

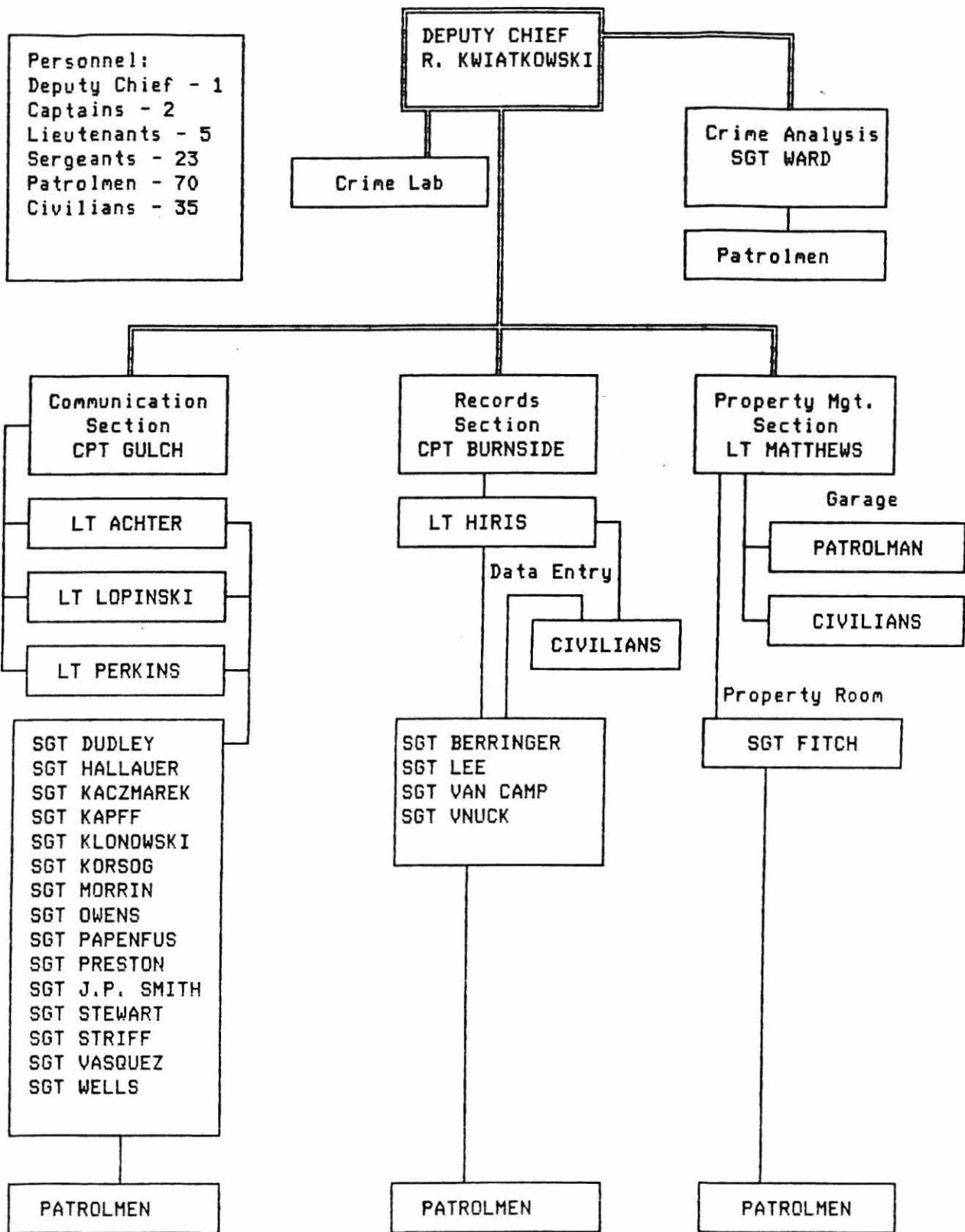
1987

Crime	Calls Logged	Cases Solved	Arrests	Indictments
Robbery	68	24	27	27
Homicide	79	4	7	7
Burglary	118	12	18	8
Auto Theft	62	4	5	4
Theft	142	10	15	5
Arson	32	0	0	0
Drugs	761	43	32	37
Rape	17	6	2	6
Hit-Skip	17	0	0	0
Weapons	6	2	2	1
Escape	4	1	1	0
Receiving	63	17	16	11
Liquor	8	0	0	0
Warrants	146	120	42	0
Forgery	11	0	0	0
Gambling	7	1	1	0
Fraud	0	0	0	0
Assault	0	0	0	0
Vandalism	0	0	0	0
Miscellaneous	57	5	16	11
Total	1598	249	184	117

Amount awarded in 1987: \$24,100.00

PART VI
SUPPORT SERVICES

(As of: DEC 1987)
 SUPPORT SERVICES BUREAU



SUPPORT SERVICES BUREAU

COMMUNICATIONS SECTION

The Communications Section, as its name implies, is the primary hub of the entire police division's emergency communications network including; telephone communications, radio communications, and teletype communications. This section receives and records on tape, all necessary incoming calls, both by radio and by telephone. They also dispatch all necessary police units to calls for service and other police situations. They monitor the National Weather Service teletype and broadcast all severe weather information. Additionally, they make tape recordings of all serious incidents and testify in court when required. The Communications Section also has the extremely important function of maintaining the portable radio inventory and the battery management program, to insure the proper functioning of these portable radios.

CRIME LABORATORY

The Toledo Police Regional Crime Laboratory provides their technical services to all area law enforcement agencies. Working in conjunction with the Scientific Investigation Unit of this Division, they develop proper methods of collecting and preserving physical evidence. Lab services which are provided include; forensic drug analysis, arson analysis, firearms identification, serial number restoration, blood alcohol determination, serological testing, hair and fibre determination and various other microanalytical techniques. Crime lab personnel are also called upon and recognized as court room experts and spend a great deal of time in the various courts of law testifying.

CRIME ANALYSIS UNIT

The Crime Analysis Unit provides the division with a comprehensive computer analysis of Part I and Part II crime offenses. By gathering, analyzing, and storing information, then disseminating this information to patrol units, the appropriate police action can be taken to reduce or eliminate this specific problem.

PROPERTY MANAGEMENT SECTION

The Property Management Section has the critical responsibility of maintaining control and accountability of all Division owned property. Included within this is the major task of operating the Division Motor Pool, overseeing the operation of the Police Armory and its arsenal, and maintaining the proper and legal functioning of the Police Property Room. Not only are the vehicles one of this section's primary responsibilities but in addition all of the equipment inside these vehicles that are used daily by our Patrol personnel. This section also conducts the Police Division Auctions in which autos, bicycles, and any other property confiscated, recovered and never claimed by its rightful owner is offered at public auction. This section is also the receiving point for all incoming and outgoing deliveries for the entire Division.

RECORDS SECTION

The Police Division Records Section acts as the central repository for all Division crime reports, criminal histories, lost, stolen and recovered property and all other operational information. By maintaining a historical record of Division activities such as files and updates on criminals, suspected criminals, persons wanted on warrants, arrests, criminal activity statistics, fingerprints, photographs, stolen and recovered property and vehicles, this information is readily accessible in useable form by members of the Division and other qualified agencies.

**RECORDS SECTION ACTIVITIES
1987 SUMMARY**

Reports Desk

Crime Reports	80,904
Telephone Reports	15,377
Total Reports	96,281
Reports Microfilmed	132,799

Auto Desk

Reported Stolen	4,201
Autos Recovered	2,881
Auctioned Autos	152
Junked Autos	4,024
Total Autos Towed	12,532

Arrest/Warrants Desk

Warrant Grace Letters	4563
Letters Returned	669
Total Summoned	3894
Warrants Processed:	
Local Warrants	23,871
Outside Warrants	39
Total Warrants	23,910
Warrants Withdrawn	6,745

NORIS Entries

Warrant Entries	22,006
Arrest Entries	7,733
A.T.L. Entries	4,279
New RID Entries	3,248
Cancellations	30,603
Transfers	1,018
Modifications	43,884
Total NORIS	112,771

Records Desk

Records Checks:	
Lucas County Prosecutor	727
City Licenses	536
City Probation	513
County Probation	177
Handgun Cards	2,400
Other Paid Checks	6,980
Other Unpaid Checks	3,538
Total Records Checks	14,871
Records Expunged	583

Mail Clerk Desk

Total Incoming Mail	41,513
Letters Processed	3,288
Insurance Reports	4,187
Claim Letters	693

Identification Unit

Fingerprints	25,713
Film Processed	2,249
Color Prints	602
B/W Enlargements	3,660
Latent Prints	30
Misc. Functions	6,319

Income Received

Crime Reports Counter	\$8,297.00
Crime Reports Mail	\$17,390.00
Record Checks Counter	\$17,016.00
Record Checks Mail	\$9,046.50
Auto Auction	\$62,320.00
Identification	\$7,602.50
Total Income	\$121,672.00

**COMMUNICATIONS SECTION
1987 SUMMARY**

	1987	1986	% Change
Total Incoming Calls	418,702	408,250	+2.0
Incoming Calls Answered within 24 Seconds	375,773	372,676	+.8
Calls to Recorder (after 24 seconds)	42,929	35,574	+20
Calls Abandoned by Calling Party	18,714	18,985	-1.4
Calls Referred to Telephone Reporting Unit	14,678	14,163	+3.6

89.7 of the total incoming calls were answered within 24 seconds

Mobile Response Call For Service	Day Shift	Afternoon Shift	Night Shift	total
----------------------------------	-----------	-----------------	-------------	-------

**CRIME LABORATORY ACTIVITIES
1987 SUMMARY**

Analysis Type	1987	1986	Change
General Analytical Chemistry	23	47	-24
Serological/Microscopy	149	149	0
Firearms ID/Toolmarks	109	135	-26
Drug Chemistry	1477	1083	+394
Alcohol Determination	157	196	-39
Polygraph	0	17	-17
Miscellaneous	4	12	-8
Total Cases	1900	1621	+279
Subpoenas			
Subpoenas Received	262	232	+30
Cases Received			
Toledo Police Division	1727	1351	+376
Outside Agencies	173	270	-97

**PROPERTY MANAGEMENT SECTION
1987 SUMMARY**

	1987	1986	Change	% Change
Total Fleet Miles	4,319,767	4,499,938	180,171	4.0
Fuel Consumption	407,788	430,821	23,033	5.35
Miles Per Gallon	10.59	10.45	.14	1.34
Police Vehicle Accidents	187	177	10	5.65
Property Room Cases	6763	6272	491	7.83

Inventory of Division Vehicles

Harbor Patrol Boats	2
Large Vans	2
Mini Vans	2
Pickup Trucks	2
Mobile Command Post	1
Mounted Patrol Trailers	3
Three Wheel Motorcycles	2
Electric Scooters	3
Four Wheel Drive Vehicles	7
Traffic Aide Vehicles	9
Patrol Wagons	18
Unmarked Vehicles	138
Marked Vehicles	97
Total Fleet	286

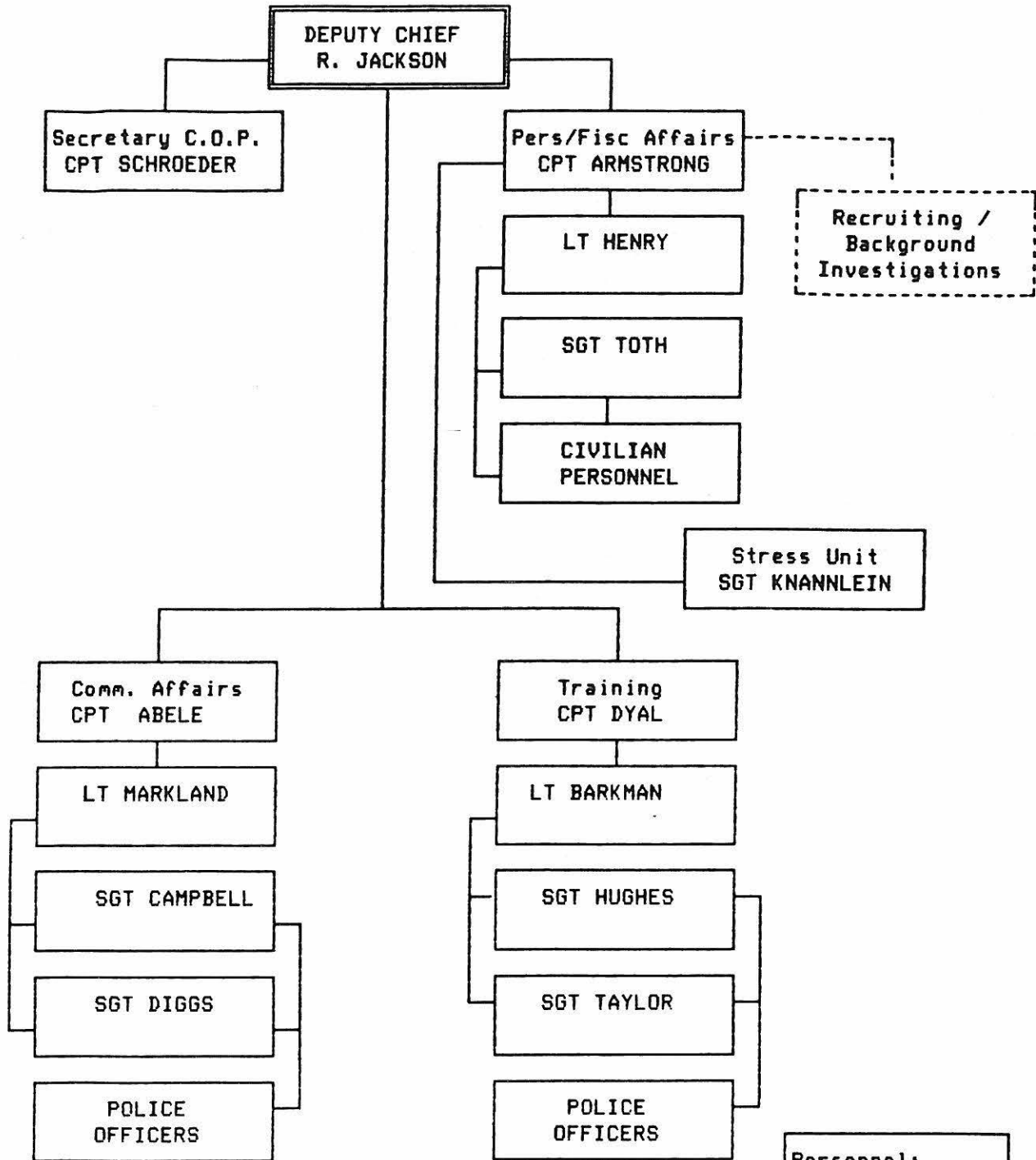
Armory Inventory

Handguns	934
Shotguns	190
Carbines	36
Rifles	12
Tear Gas Guns	18

Auction Proceeds

The proceeds from one auction during 1987 amounted to \$5,901.

(As of: DEC 1987)
ADMINISTRATIVE SERVICES BUREAU



- Personnel:
- 1 - Deputy Chief
 - 4 - Captains
 - 3 - Lieutenants
 - 5 - Sergeants

 - 11 - Patrolmen
(Comm. Affairs)

 - 6 - Patrolmen
(Training)

 - 3 - Civilians

ADMINISTRATIVE SERVICES BUREAU

COMMUNITY AFFAIRS SECTION

The Community Affairs Section of the Toledo Police Division acts as liaison between community organizations and the Division by attending meetings, providing information and reporting to the Administration on past, current and future community problems. Another primary responsibility of this section is to investigate complaints from the local school systems involving the safety of students, teachers and administrators as well as investigating complaints involving neighbors that cannot be diffused or alleviated by conventional police practices. The Community Affairs Section also conducts traffic and personal safety programs in the schools and they coordinate the pre-school summer Safety program, Safe-T-City. The Crime Prevention function is also the responsibility of this Section.

PERSONNEL AND FISCAL AFFAIRS SECTION

This administrative section prepares and administers the division's budget and controls and coordinates the purchasing of all equipment and supplies for the division. They also are responsible for the payroll function, personnel record keeping, affirmative action statistics, Equal Employment Opportunity plans and maintaining the police Time Bank. They also assist in the labor relations function including contract negotiations, grievance response, grievance settlement and arbitration.

TRAINING AND RECRUITMENT SECTION

The Training and Recruitment section has the responsibility to research, plan, develop, coordinate, and produce skills and career development training programs for all levels of Division personnel. They serve as the Division's focal point for the recruitment, selection and training of prospective and newly sworn personnel. They also manage and maintain the Division Training facilities and equipment, as well as all training records and files. The Training and Recruitment section acts as liaison between the Division and the Ohio Peace Officer's Training Council.

ADMINISTRATIVE SERVICES BUREAU
PERSONNEL AND FISCAL AFFAIRS SECTION

1987 Budget Summary

Budget Category	1987	1986
Salaries and Personnel Services	\$35,420,813	\$35,553,650
Supplies	888,125	770,910
Contractual Services	3,136,095	3,079,620
Capitol Outlays	1,126,909	855,810
Total	\$40,571,942	\$40,259,990

**ADMINISTRATIVE SERVICES BUREAU
Personnel and Fiscal Affairs Section**

**1987
Personnel and Salary Summary**

Total Division Personnel By Race and Gender

Rank	WM	WF	BM	BF	HM	HF	Total
Chief	1	0	0	0	0	0	1
Deputy Chief	3	0	1	0	0	0	4
Captain	16	0	0	0	0	0	16
Lieut.	33	0	2	1	0	0	36
Sgt.	82	6	12	0	2	0	102
Patrol Officers	405	48	70	30	22	4	579
Total	540	54	85	31	24	4	738

Promotions By Race and Gender

Rank	WM	WF	BM	BF	HM	HF	Total
Chief	1	0	0	0	0	0	1
Deputy Chief	0	0	0	0	0	0	0
Captain	1	0	0	0	0	0	1
Lieut.	5	0	0	1	0	0	6
Sgt.	6	2	3	0	0	0	13
Total	13	2	3	1	0	0	19

Salary Range By Rank

Rank	Salary Range *
Chief of Police	57,235 **
Deputy Chief	49,021.44 - 50,795.68
Captain	45,260.80 - 46,895.68
Lieutenant	41,121.60 - 42,698.24
Sergeant	35,297.60 - 37,130.08
Patrol Officer	24,346.40 - 32,009.12

* as of July 1987
 ** as of January 1988

PERSONNEL DISTRIBUTION CHART

	POLICE ADMINISTRATION					FIELD OPERATIONS BUREAU					INVESTIGATIVE SERVICES BUREAU					SUPPORT SERVICES BUREAU					ADMINISTRATIVE SERVICES BUREAU					TOTAL DIVISION																					
	Special Assignments	Administrative Asst.	Planning/Inspections	Internal Affairs	BUREAU TOTAL	% of Total Sworn or Civilian Personnel	Special Assign./Admin. Sv.	Mounted Patrol	Patrol Shift - 4/7x3	Patrol Shift - 6/3x11	Patrol Shift - 6/11x7	Patrol Shift - 8/8am-4pm	Traffic Section	BUREAU TOTAL	% of Total Sworn or Civilian Personnel	Special Investigations	Crimes Against Persons	Crimes Against Property	Youth Services	Vice / Metro	Staff / Night Supervisors	BUREAU TOTAL	% of Total Sworn or Civilian Personnel	Communications	Records Section	Property Management	Chromatistics Laboratory	Crime Analysis	BUREAU TOTAL	% of Total Sworn or Civilian Personnel	Sworn Unit	Community Affairs	Personnel/Fin. Affairs	Training & Recruitment	BUREAU TOTAL	% of Total Sworn or Civilian Personnel	% each rank / position in of the total sworn / civilian personnel	Number of each rank / position in the Division									
Chief of Police		1			1	5.6																														.14	1										
Deputy Chief		5			5	27.8																																	6								
Captain				1	1	5.6	1	1	1	1	1		5	1.1	1	1	1	1				4	3.2	1	1			2	2.3		1	1	1	3	10.0			2.1	15								
Ser. of Police																																								1							
Lieutenant			2	1	3	16.7		5	5	5	1	1	15	3.8	1	1	1	1	1			5	4.0	3	1	1		5	5.8		1	1	1	3	10.0			4.8	35								
Sergeant		1	3	3	7	38.9	2	2	10	11	10	6	4	6	8.5	3	5	5	3	3		20	16.1	15	5	1	1	22	25.8	1	2	1	2	6	20.0			13.6	89								
Police Officer			1		1	5.6	7	7	102	120	104	53	11	404	85.6	10	18	23	28	18		85	78.6	24	23	6	4	57	65.3		11		6	17	5.6			78.6	574								
TOTAL SWORN PERSONNEL		6	1	6	5	18	10	8	118	137	121	61	16	472	100	14	25	31	31	23		124	100	43	30	8	5	86	100	1	15	4	10	30	100			100	730								
CIVILIANS																																															
Crime Lab/Admin.																																								2.5	1						
Criminalist																																									7.5	3					
Systems Analyst																																									2.5	1					
Clk. Pol. Data Control																									1																	2.5	1				
Keypunch Operator																																										25	10				
Stamm																																										2.5	1				
Clk. - Senior																																											2.5	1			
Clk. - Intern.																																										42.5	17				
Clk.																																											10	4			
Secretary																																															
Vehicle Ser. Worker																																															
Traffic Aide																																															
Cashier																																															
Data Control Sup.																																															
TOTAL CIVILIAN PERSONNEL																																															
TOTAL DIVISION PERSONNEL		6	1	6	5	18	2.3	10	8	118	137	121	61	16	472	61.3	17	25	31	32	23		128	16.6	43	30	8	4	6	116	15.5		1	15	7	10	33	4.3			100	770					

Effective
March 1, 1988

COMMUNITY AFFAIRS SECTION

1987 SUMMARY OF ACTIVITIES

Community Relations Programs

Activity	1987	1986	% Change
Officers Assigned	11	14	-21.4
School Presentations	808	648	+24.5
Attendance	28,977	30,215	-4.1
Public Talks	181	202	-10.4
Attendance	5,823	5,517	+5.5
Fingerprint Programs	17	27	-37
Children Fingerprinted	1,167	1,609	-27.5
Meetings Attended	167	491	-66
Citizen Complaints	232	359	-35.4
School Complaints	101	83	+21.7
Arrests	45	16	+181
Surveillances	144	101	+42.6
Referrals	26	67	-61.2
Racial -Religious Ethnic Complaints (4-1-87 to 12-31-87)	85	n/a	n/a

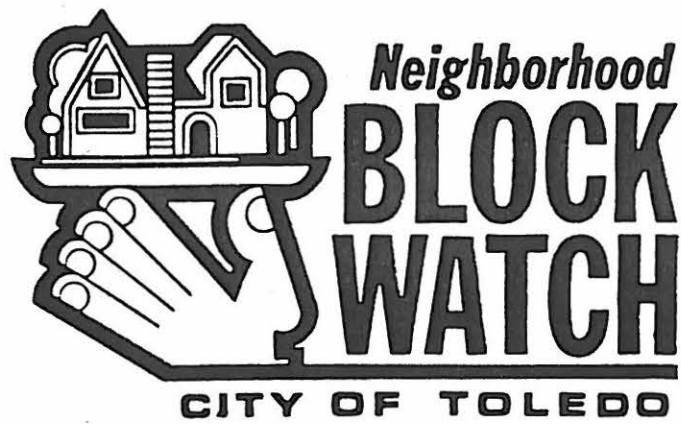
School Safety Program

Activity	1987	1986	% Change
Safe-T-City	1,153	1,172	-1.6
School Attendance	734 42,891	687 54,589	+6.8 -21.4

**COMMUNITY AFFAIRS SECTION
BLOCK WATCH PROGRAM**

1987 Summary of Activities

	1987	1986	% Change
Neighborhood Block Watch Presentations	126	145	-13.1
Persons in Attendance	3,366	5,113	-34.2
New Residences Enrolled	1,720	4,242	-59.5
Total Block Watch Program Membership	35,534	34,049	+4.4



In cooperation with:

- **The Toledo Police Division**
- **The Mayor's Panel on Block Watch**

RUEBEN BUMBUS
HARRY MORRELL
JOE RUTHERFORD
JOHN MCHUGH
VIRGINIA FRENCH
RAY DICK

BILL COPELAND
SAM BURNETT
SHELLY LEESTMA
PAUL STEWART
VIVIAN STEWART
ALICE LYCZKOWSKI
"Chairman"

A special thanks to the Toledo Police Division Crime Prevention Unit, and the many volunteers committed to the success of the Neighborhood Block Watch Program.



People helping people...

**UNIFORM CRIME REPORT
1987 SUMMARY OF OFFENSES**

Crime Against Persons	1987	1986
Murder	34	21
Manslaughter	1	0
Rape	360	297
Robbery	1,299	1,120
Aggravated Assault	1,075	1,022
Total	2,767	2,460

Crime Against Property	1987	1986
Burglary / Breaking & Entering	6,964	5,992
Larceny Over \$300	3,945	3,869
Larceny Under \$300	12,791	12,316
Auto Theft	2,889	2,778
Total	26,589	24,955
Grand	29,356	27,415

1987 Crime Index*

Murder	9.304
Rape	104.67
Robbery	377.68
Agg. Assault	312.56
Burglary	2024.78
Larceny/Theft	4865.98
Auto Theft	839.98

* Based on the July 25, 1987 Census Bureau population estimate of 343,939. Crime rate is for 100,00 population and does not include arson offenses.

**COMPARATIVE CRIME RATES
100,000 POPULATION**

1986

Overall Crime Rate

	Crime Rate	Rank
Dayton	9116.66	1
Columbus	8292.78	2
Cleveland	8281.77	3
Toledo	8109.02	4
Akron	7863.43	5
Cincinnati	7631.96	6

Crimes Against Property

Crimes of Violence

	MV/Theft		Arson		Robbery		Aggravated Assault	
Akron	567.31	3	106.23	5	297.98	6	696.90	1
Cincinnati	312.00	6	156.00	3	328.20	4	482.31	3
Cleveland	2147.89	1	188.09	1	676.62	2	461.08	4
Columbus	493.07	5	71.70	6	398.23	3	399.99	5
Dayton	523.85	4	170.57	2	788.26	1	499.01	2
Toledo	807.70	2	138.11	4	325.64	5	297.15	6

	Burglary		Larc/Theft		Murder		Rape	
Akron	1452.44	6	4659.70	4	11.02	5	71.85	6
Cincinnati	1628.58	5	4633.91	5	12.42	4	78.54	5
Cleveland	2182.47	2	2461.50	6	22.69	2	141.44	1
Columbus	2140.57	3	4678.31	3	13.78	3	97.13	3
Dayton	2222.35	1	4963.58	1	28.15	1	120.89	2
Toledo	1742.17	4	4705.79	2	6.11	6	86.35	4