

# TOLEDO POLICE DIVISION



1986

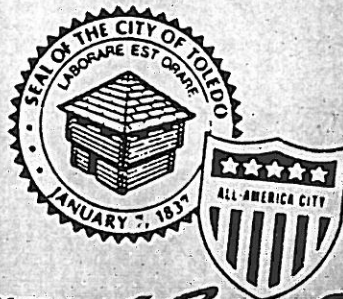
# ANNUAL REPORT

Toledo, dynamic and on the move—expanding its horizons, projecting its image, and reaching for greater heights than ever before.

Downtown development started at Seagate with twin office towers and expanded to include the Portside Festival Marketplace, new office buildings, the Hotel Sofitel, and now under construction, the Convention Center and the Radisson Hotel Complex. Promenade Park has become a focal point not only for the downtown area but for the entire community. A few blocks away, the new Government Center houses City, County and State offices.

Revitalization, growth, and cooperation extends beyond the downtown area to nearby neighborhoods including the Warren-Sherman Industrial Park and the Bancroft-Franklin Plaza.

Bricks and mortar do not tell the whole story of progress in Toledo. Enthusiasm, pride and belief in the future have been created by concerned and involved citizens. "*Toledo Alive*" has become more than a popular slogan, it's the Spirit of a New City.



TOLEDO *Alive*

CITY OF TOLEDO  
DIVISION OF POLICE

1986 ANNUAL REPORT

TABLE OF CONTENTS

PART 1 – INTRODUCTION

Letter to the City Manager.....	1-2
Law Enforcement Code of Ethics.....	3
Toledo Government.....	4
Organizational Chart of City of Toledo.....	5
Organizational Chart of Division of Police.....	6
Police Division Staffing Chart.....	7

PART 2 – ITEMS OF INTEREST

History of the Police Division.....	8-12
In Memorandum.....	13
Toledo Police Chiefs-Past to Present.....	14
1986 Division Service Awards.....	15
1986 Retirements.....	16
Police Olympics.....	17

PART 3 – POLICE ADMINISTRATION

Unit Descriptions.....	18-19
Internal Affairs Unit Summary.....	20

PART 4 – FIELD OPERATIONS BUREAU

Section/Unit Descriptions.....	21
Sector/Beat Map of the City of Toledo.....	22
Activity Summary of Shifts.....	23
Summary of Traffic Citations.....	24
Accident Comparison Chart.....	25
Hourly Accident Statistics.....	26
Mounted Patrol Summary.....	27
Harbor Patrol Summary.....	28
Junk Auto Unit Summary.....	29

PART 5 – INVESTIGATIVE SERVICES

Description of Sections.....	30-32
Crimes Against Persons Summary.....	33
Crimes Against Property Summary.....	34
Vice-Metro Summary.....	35
Youth Services Summary.....	36-37
Crime Stopper Statistics.....	38

## TABLE OF CONTENTS

### PART 6 – SUPPORT SERVICES

Description of Sections.....	39
Records Section Summary.....	40
Communications Section Summary.....	41
Crime Laboratory Summary.....	42
Property Management Report.....	43

### PART 7 – ADMINISTRATIVE SERVICES

Description of Sections.....	44
1986 Budget Summary.....	45
Community Affairs Section Summary.....	46
Block Watch Program.....	47
Training Section Report.....	48
Personnel Distribution Chart.....	49
Personnel/Salary Summary.....	50

### PART 8 – UNIFORM CRIME REPORT SUMMARY

Uniform Crime Report 1986.....	51
--------------------------------	----

# INTRODUCTION

# CITY OF TOLEDO OHIO



## DIVISION OF POLICE

PHILIP A. HAWKEY  
City Manager

C. E. RISER  
Safety Director  
Commissioner - Traffic Engineering

Safety Building  
525 N. Erie Street  
Toledo, OH 43624-1345

JOHN MASON  
Chief of Police  
LEADS OH0480700

April 15, 1987

Mr. Philip A. Hawkey  
City Manager  
One Government Center  
Toledo, Ohio - 43604

Re: 1986 Annual Report

Dear Mr. Hawkey:

It is again my privilege to present you with the Toledo Police Division Annual Report for 1986.

As the City continues its' commitment to growth and revitalization, we have also renewed our commitment to the community to provide the finest police service possible.

One of our many accomplishments during 1986 was the reinstatement of the Mounted Patrol Unit. They are the first Toledo police officers on horse-back since 1928. Their popularity with the people of Toledo and their effectiveness in dealing with problems inherent to large crowds has exceeded all of our expectations.

The 40th Toledo Police Academy class, following 23 weeks of intensive training, graduated 58 trainees on February 7, 1986. Then on September 19, 1986, sixteen new appointees began training in the 41st Academy class. At year end, our strength was 743, seven less than authorized.

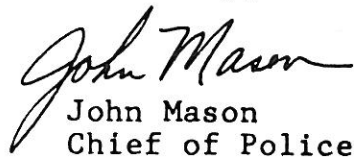
During 1986, the Division's Metro Drug Unit seized \$2,697,303 worth of illegal street drugs. The Division is committed to continue efforts which will eliminate drugs and the related problems associated with drug traffic within the community.

Our enthusiasm to improve the quality of life in Toledo is exemplified by our programs sponsored by the Community

Affairs Section. The Block Watch Organization continues to be a model for the rest of the country. This program added 4,242 new members last year bringing the total membership to 34,049 households. In addition, Community Affairs officers presented the School Safety Program to more than 54,500 children.

During the past year, we have continued to explore new methods for improving police services to the community. In this era of re-development for our city, we recognize our need and responsibility to face the many new challenges that growth and revitalization bring.

Sincerely,

  
John Mason  
Chief of Police

JM:bg

cc: Thomas Hoover,  
Acting Director of Public Safety

LAW ENFORCEMENT CODE OF ETHICS

As a law enforcement officer, my fundamental duty is to serve mankind; to safeguard lives and property; to protect the innocent against deception; the weak against oppression or intimidation, and the peaceful against violence or disorder; and to respect the constitutional rights of all persons to liberty, equality, and justice.

I will keep my private life unsullied as an example to all; maintain courageous calm in the face of danger, scorn or ridicule; develop self restraint; and be constantly mindful of the welfare of others. Honest in thought and deed in both my personal and official life, I will be exemplary in obeying the laws of the land and regulations of my department. Whatever I see or hear of a confidential nature or that is confided to me in my official capacity will be kept ever secret unless revelation is necessary in the performance of my duty.

I will never act officiously or permit personal feelings, prejudices, animosities or friendship to influence my decisions, with no compromise for crime and with relentless prosecution of criminals. I will enforce the law courteously and appropriately without fear or favor, malice or ill will, never employing unnecessary force or violence and never accepting gratuities. I recognize the badge of my office as a symbol of public faith, and I accept it as a public faith, and I accept it as a public trust to be held so long as I am true to the ethics of the Police Service. I will constantly strive to achieve these objectives and ideals, dedicating myself before God to my chosen profession – Law Enforcement.



*TOLEDO CITY GOVERNMENT*

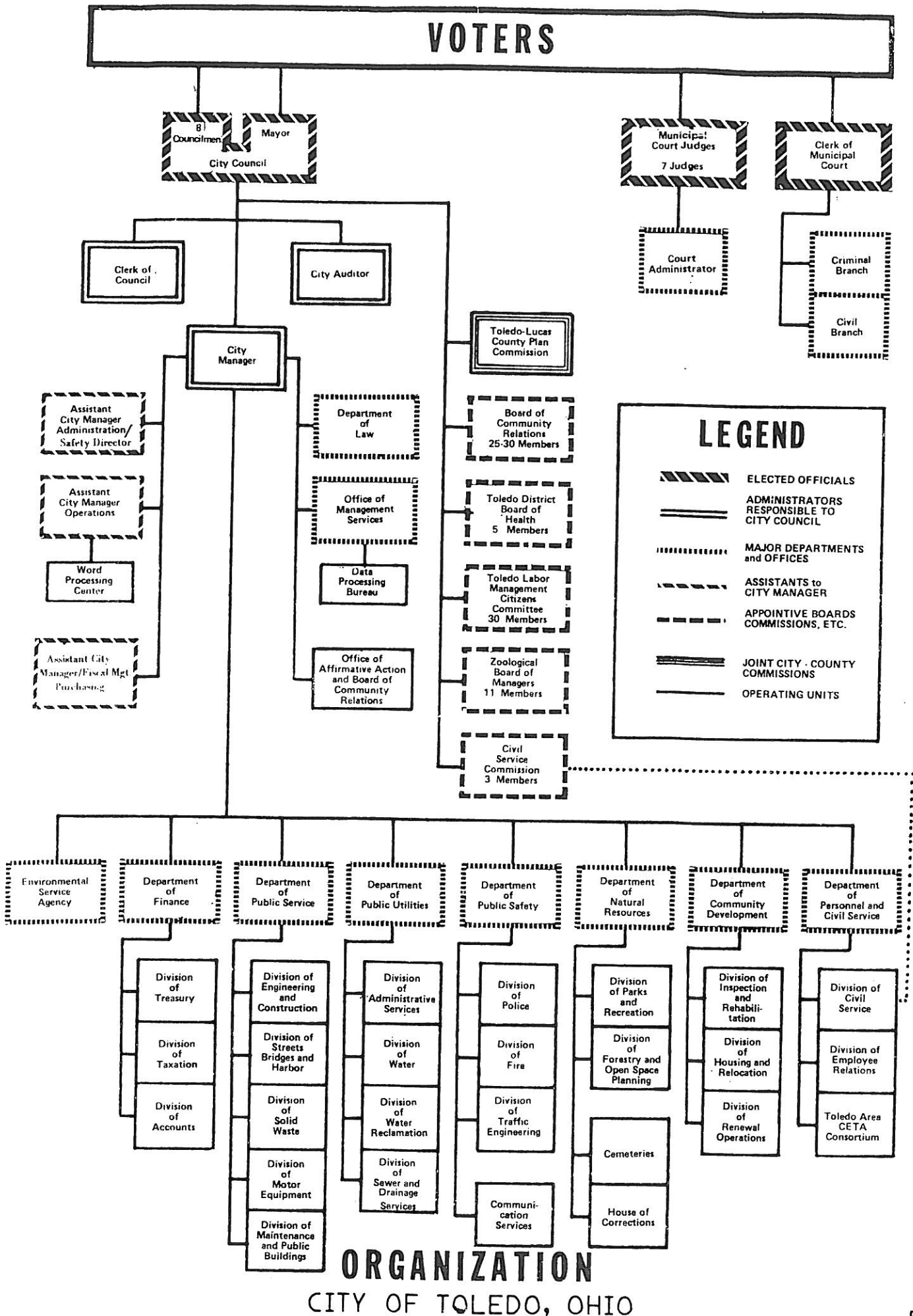
*TOLEDO, OHIO'S FOURTH LARGEST CITY, IS THE SEAT OF LUCAS COUNTY. IT IS LOCATED ON THE WESTERN SHORE OF LAKE ERIE AND IS THE MAJOR TRADING CENTER FOR NORTHWESTERN OHIO AND SOUTHEASTERN MICHIGAN. IT'S 354,000 RESIDENTS LIVE IN AN 86 SQUARE MILE AREA. TOLEDO, THE "GLASS CAPITAL OF THE WORLD" IS ONE OF THE NATION'S MOST IMPORTANT DISTRIBUTION CENTERS.*

*TOLEDO IS GOVERNED BY A NINE-MEMBER COUNCIL, ELECTED AT LARGE, LED BY THE MAYOR, ELECTED DIRECTLY BY THE PEOPLE. THE CITY MANAGER IS THE ADMINISTRATIVE HEAD OF CITY GOVERNMENT AND DISCHARGES COUNCIL'S DIRECTIVES.*

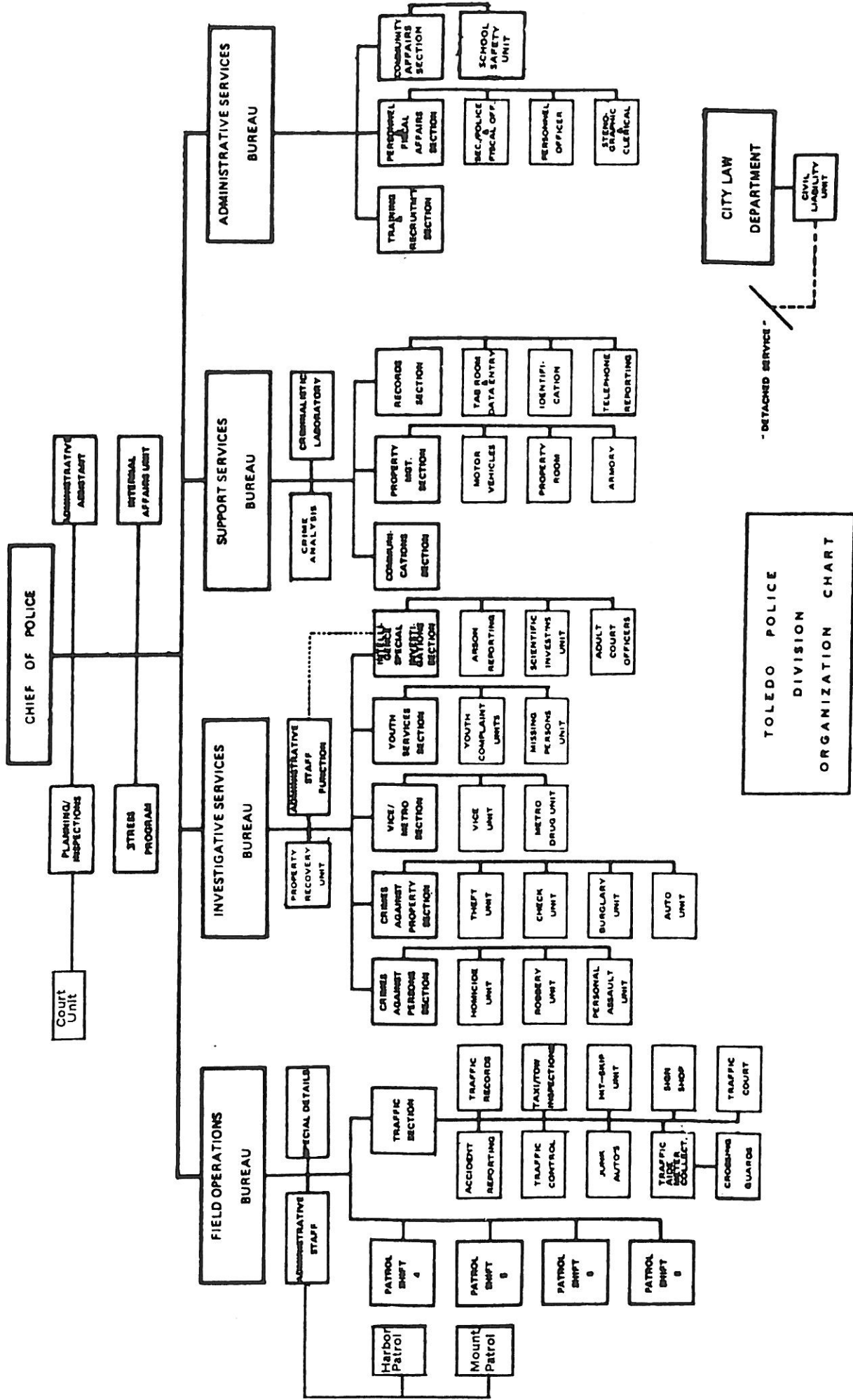
*THE TOLEDO POLICE DIVISION IS HEADED BY THE CHIEF OF POLICE AND IS UNDER THE ADMINISTRATIVE CONTROL OF THE DIRECTOR OF PUBLIC SAFETY. THE DIVISION MOTTO IS:*

*"TO PROTECT AND TO SERVE"*

# VOTERS

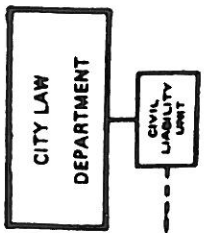


## ORGANIZATION CITY OF TOLEDO, OHIO



TOLEDO POLICE  
DIVISION  
ORGANIZATION CHART

"DETACHED SERVICE"



PREPARED BY PLANNING/INSPECTIONS:

DEPARTMENT OF PUBLIC SAFETY

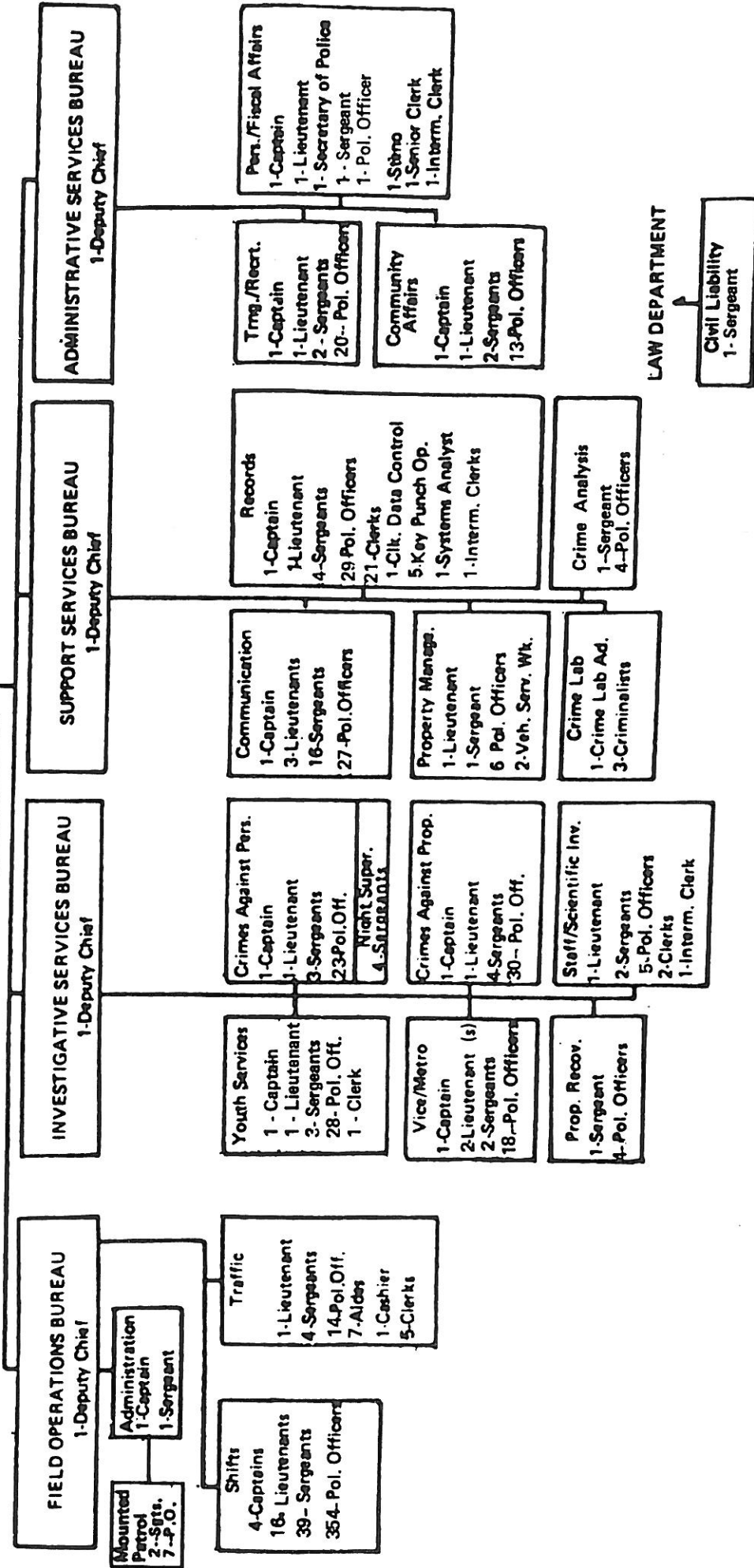
DIVISION OF POLICE

TOTALS

- 1 Chief
- 4 Deputy Chiefs
- 18 Captains
- 38 Lieutenants
- 101 Sergeants
- 584 Pol. Officers
- 1 Sec. of Police
- 56 Civilians

Effective: February 12, 1987

Note: This chart reflects the actual staffing levels regardless of authorized manning levels.



**ITEMS OF INTEREST**

## HISTORY OF THE TOLEDO POLICE DIVISION

1836

The City of Toledo was incorporated by an act of the State Legislature.

1837

The first City Charter is written, Calvin Comstock was appointed as the first City Marshall. Prior to that, justice was administered by the Justice of the Peace and his constables.

1840-1850

The population of the city rose to 3,827 people from 1,220.

1852

A volunteer police force was authorized by the City Council with the same police powers as the City Marshall.

1853

By Council Resolution, the 'night watch' was initiated with a watchman for each of the four wards to patrol only during the night. The mayor had the right to appoint and regulate as he deemed necessary, with the advice of Council. The City Marshall was designated as the Captain of the Night Watch.

1865

The City Marshall was made a part of the Police Board. City Council Resolution stated, 'If the Police Board shall deem it necessary at anytime, they may detail one or more of the police of the city to serve as Day Patrolman.' This was the first time authorization had been given for a daytime police officer.

1867

Because of the increase of Toledo's population (20,000), Toledo advanced to a City of the First Class in grade, and was invested with a local municipal government, including a Metropolitan Police Force. The Clerk of Council was instructed to begin paying salaries to police officers. Prior to this, any pay which the police had collected was through private contributions. Needless to say, those who contributed the most were used to getting the most protection. Thus the City Marshall and the volunteer police force was deposed. Three Police Commissioners were selected. Henry Breed was named Captain (Chief) of Police, and thirteen police men were hired as well as a Sergeant and a Turnkey. At that time each Patrolman was paid \$720 per year. The total annual budget was \$21,980. This included equipment maintenance, all salaries, and the upkeep of the prisoners in the City Jail. Patrolmen were assigned to work fourteen hours on the Day Shift, and ten hours on the night shift, seven days a week.

The first Detective, Elijah Hanks, was officially appointed. The Chain Gang was abolished in Toledo and the first In-Service Training was offered. This training was the reading of the Department Rules and Regulations. This was conducted at least once a week by the Captain.

1869

The first officer to be fired from the Toledo Police Force was one Henry Nellis, who was found sleeping on duty.

1871

Two Sanitary Policemen were appointed. Their duties consisted of fumigating homes where needed and enforcing quarantines.

1874

By City Ordinance, the Title of Superintendent of Police was changed to Chief of Police. The work hours for the officers was shortened to approximately 12 hours for the day shift, and 10 for the night shift. The rank of Roundsman was established with the duty to go to each District Beat and make sure that the assigned beatman was there, and to collect any information the beatman may have. This was the only means of communication between headquarters and the street officer.

1879

The limited use of photographs was initiated for criminal identifications.

1880

The first Metropolitan Police Board was instituted, with the local board members selected by the Governor. Subsequently, the members were elected by the public for four year terms.

The rank of Detective was permanently established by the Board of Police Commissioners. The City allowed for the appointment of a maximum of ten officers to the rank of Detective. William Scott became the first Chief of Police under the Metropolitan System.

1882

The City adopted the 'Bertillion System' of measurements, as well as the 'Scar and Mark' system for criminal identification. The Bertillion System involved the measuring of almost every part of the body, including the circumference of the head, the total span of the arms, etc. The scar and mark system involved the detailed listing of any scar or mark on the prisoner's body.

1883

The first patrol wagon (horse & buggy) was purchased to be used for the transportation of prisoners. Prior to this, all prisoners had to be walked to the station for booking. In the case of highly intoxicated persons, this often became a problem. One industrious officer solved this problem by borrowing a wheelbarrow for these situations.

1890

The City began to install over 100 alarm boxes in various neighborhoods through which the beat officer could be summoned.

1898

A police substation was opened at 612 Lagrange Street. Prior to this, the only police station was located at 20 North Superior Street.

1899

The population increased (115,674) to the point where it now became necessary for an officer to be assigned to traffic duty. A man was assigned to the Summit & Cherry Street intersection.

1900

By this time, Toledo encompassed 28 square miles and employed 100 patrolmen, 11 command officers and three Detectives. The City had two prisoner wagons, one at each station.

1903

With the increased use of photographs, the Police Department established a Rogues Gallery, and began to do away with the Bertillion System of Identification.

1905

The use of fingerprinting was adopted for identification purposes.

1907

The City purchased it's first motorcycles for use by the officers. At first they were used only for emergency reasons. Reports indicated that two Detectives, assigned to nights, were dispatched to the scene of a burglary in progress on their motorcycles. After apprehending the burglars, they did not wish to waste time waiting on the horse and buggy wagon, so they drove the prisoners back to the station on the handlebars of their motorcycles at speeds up to 50 MPH.

1908

Whereas horses played a major role in police history elsewhere, Toledo did not adopt a mounted unit until now. It was the duty of each officer assigned to the Mounted Unit to care for his horse, including feeding, cleaning and grooming. The Mounted Police Squad lasted until 1928.

1911

The Police Department added a full Motorcycle Squad consisting of 20 men.

1919

The position of Turnkey was filled with a sworn police officer rather than a civilian. The first Police Woman was assigned with the duty of watching dancehalls and other places of public amusement, as well as handling certain cases involving women. The remainder of her time was spent on patrol.

1924

The Toledo Police Pistol Range was dedicated. The range was built by members of the Department and was reported to be one of the best in the country if not the World. It was estimated at the time to have been worth \$100,000 but the total construction cost was \$5.60. Most of the materials were donated, and the labor was performed by the officers themselves.

1925

The Police Department moved from the 80 year old structure on Superior Street to the newly built Safety Building at 525 North Erie Street, its current headquarters.

1926

The Women's Bureau was formed. This Bureau handled cases of missing girls and women, and any other cases involving women. The woman Sergeant was Margaret Slater who headed it for 29 years. In a history of the police department by Harold Towe, professor at the University of Toledo, he stated, 'It must be said that the Women's Bureau has, from its inception, been an honest to goodness police unit, making it's own investigations, check-ups, and arrests. They have been Police Officers, not social workers.'

Then Chief of Police, Harry Jennings, instituted the concept of probation in the courts by establishing the 'Reclaiming and Probation Division' of the Department. Police Officers assigned, interviewed first offenders prior to court, and made a recommendation to the court. If the offender was released, the officer worked closely with him for approximately six months.

1928

The memorial monument to police officers killed in the line of duty was dedicated this year. It was said to be the only memorial in the country conceived of and built by police officers. It was regarded as a fine work of art and architecture.

1930

The Department installed radio communications. Two way radios were installed in all police vehicles. The Police Department began broadcasting on Station WRDQ.

1932

The first police school was instituted with private qualified citizens donating their time and expertise. The first class lasted eight weeks. The Identification Bureau opened nights. Previously, it had only functioned during the day shift.

1934

The establishment of a school for traffic violators took place. The judge now had the option to sentence violators to the school, conducted by police officers, to improve the violator's basic driving skills.

1937

The Crime Laboratory was established. Prior to this time, limited scientific and chemical analysis was done, but the facilities at the University of Toledo Laboratory were utilized.

The Juvenile Bureau was created, although somewhat limited in it's functions. Police began to expand their duties from apprehension to prevention. The entire concept of law enforcement, or police work, was changing.

The Accident Investigation Squad also began this year. In 1937 there 900 auto accidents in the City of Toledo.



1938

The Toledo Police Academy was initiated and graduated it's first class.

1940

Nine policemen began flight training to become 'Policemen of the Air', as soon as the department received it's first airplane.

1948

McCarthy Stadium in Highland Park was dedicated to Officer John McCarthy who was killed in the line of duty. His name, as well as the other 21 officers killed before him, was commemorated on a plaque at the Stadium.

1949

Radar was adopted by the department and was first used to trap unsuspecting speeders.

1952

A Police Library is begun under the guidance of Inspector Roth of the Police Academy.

1953

Due to a high injury rate, the two-wheel Motorcycle Squad was abolished.

Harbor Patrol started on a part-time basis with a borrowed boat.

1955

The City was given a retired U.S. Coast Guard boat to enforce the water laws in the Toledo area. This was the beginning of the Harbor Patrol, on a full-time basis.

1958

The police work week was reduced from 48 hours to 44 hours. (It was not until 1960 that the 40 hour work week was implemented.)

1960

The uniform was altered when the TPD went to the white trimmed hat to get away from the 'bread truck' driver look. Also, the uniform began to sport a new look with the adoption of the new shoulder patch. This patch is the one still worn today.

1963

Due to major annexation in the metropolitan area, police patrol responsibility is now 76.8 square miles and the population is over 370,000 people. In less than two years, the City has grown over 19 square miles. The police budget -- \$3.3 million.

1964

Patrol districts are reorganized from 17 basic beats to 20. In addition, the Police Division has initiated an 8:00pm - 4:00am 'Selective Enforcement' shift to help supplement the district patrol units.

The Police Auto Pound was discontinued and a private garage was authorized to take over the storage of vehicles in police custody.

1966

Portable 'Walkie-Talkie' Radios were introduced to the TPD, with great success.

1970

Officer William Miscannon was fatally shot at the corner of Junction & Dorr Streets, September 18.

1973

Carol Tipton became the first woman to graduate from the Toledo Police Academy with the rank of Patrolman. The use of one-man patrol cars was begun.

1974

Air-conditioning was placed into marked police vehicles for the first time in our history.

1976

The Scott Park District Police Station was opened and was the first new police facility for the police division since 1925.

1977

The Toledo Police Division closed the men's and women's jails and began booking all prisoners at the newly built Lucas County Corrections Center. This ended an era which began in 1837 when the City Jail was first opened.

1980

All Field Operations Bureau and Investigative Personnel were pulled out of the Scott Park District Station and the Division was once again totally centralized. The facility at Scott Park would then house the Community Relations and the Crime Prevention Sections.

1982

Due to severe fiscal problems, almost all civilian police employees are laid off. Many returned to their jobs later on in the year after the Police Division worked shoulder to shoulder with other city agencies to help pass an increase in the payroll income tax.

1984

Due to increased resources as a result of economic growth and increased municipal tax revenues, the TPD completed a total restoration of services to the public. Manpower was brought up to authorized strength of 725, the first time since 1978. The Toledo Police Academy graduated the largest class in its history - 121.

Beat patrol officers return to the revitalized downtown area and in particular, Portside, the downtown Marketplace.

1985

City Council approves the hiring of 25 additional officers, raising the authorized strength to 750 officers, the most since the strength was reduced in 1977 to 725. The Division's records keeping responsibility was computerized. Redistricting took place doing away with the basic 22 districts and replacing it with a flexibeat system consisting of 7 primary sectors with numerous beats within each. The traditional 2 or 3 digit call numbers are replaced with a number-letter combination such as 3-D-14. Horses will once again be seen in downtown Toledo and the area parks as Chief John Mason implements the Mounted Patrol. Two Sergeants and nine patrol officers were selected to undergo training at the Detroit Mounted Police Stables and will become active in March of 1986.

1986

The Toledo Police Mounted Patrol Unit begins operation on March 3, 1986. It becomes an instant success with the public. They are the first horse-back officers in Toledo since 1928.

**TOLEDO POLICE DIVISION  
OFFICERS KILLED IN THE LINE OF DUTY**

JOHN HASSETT	March 5, 1880	CHAS. RUSSELL	Oct. 9, 1906
JAMES BOYLE	May 5, 1908	HARRY SMITH	Sept. 25, 1911
ALBERT SCHULTZ	Aug.7, 1914	KAISER BARTECKI	Jan.21, 1915
ADOLPH REIMER	Aug. 2, 1915	LOUIS JASWIECKI	March 31, 1918
WILLIAM BATHER	May 27, 1919	GEORGE ZAPF	Sept. 23, 1919
HARRY DOWELL	June 9, 1921	H.M.MOSSBERGER	June 9, 1921
WLM. H. KRESS	Aug. 1, 1921	CHAS. MCGUIRE	Dec. 22, 1921
WLM. A. REED	Dec. 28, 1921	FRITZ BACON	Aug. 13, 1922
WLM. J. MARTIN	Sept. 6, 1921	WLM. H. JULERT	Jan. 29, 1924
WALTER MULLIN	May 12, 1925	GEO. D. ZIENTARA	April 16, 1928
EDWARD BRIEST	May 19, 1931	EDWARD D. KEIM	Aug. 11, 1932
HARVEY O'NEIL	Nov. 8, 1936	FRED W. DIESEL	May 5, 1944
JOHN MCCARTHY	Jan. 7, 1947	HAROLD STEVENS	July 3, 1948
ALBERT FADELL	Nov.18, 1948	WALTER BOYLE	Dec. 8, 1961
DONALD BROWN	June 12, 1962	WLM. MISCANNON	Sept. 18, 1970

---

**LEST WE FORGET**

---

## *Police Chiefs – Past and Present*

Henry Breed	1867-1868
William P. Scott	1868-1871
	1879-1881
Joseph A. Parker	1871-1872
Josiah C. Purdy	1872-1879
	1883-1885
Egbert E. Morse	1881-1882
General James Blair Steedman	1882-1883
Edward O'Dwyer	1885-1892
Benjamin F. Raitz	1892-1902
Perry D. Knapp	1902-1914
George A. Murphy	1914-1915
Henry J. Herbert	1915-1922
Harry Jennings	1922-1928
Louis J. Haas	1928-1932
	1932-1933
William D. Delehanty	Feb.'32-Mar.'32
Daniel T. Wolfe	1933-1936
Ray E. Allen Sr.	1936-1956
Anthony A. Bosch	1956-1970
Robert J. Duck	1971-1974
Corrin J. McGrath	1974-1978
Walter Scoble	1978-1980
John W. Mason	1980-Present

# DIVISION SERVICE AWARDS

## Medal of Meritorious Service

.....for service over and above what is normally expected of a police officer

Officer DONALD KENNEY

Officer MANUEL SOTO

Officer TIMOTHY NOBLE

## Blue Star Medal

... for an officer who has been wounded in the line of duty

Officer KEVIN KEEL

Officer MARTIN SCHABER

## Professional Service Awards

... for an officer who has maintained a continuous record of exceptional service

Officer EUGENE BROWNFIELD

Officer JOHN HACK

Officer JOHN HELMAN

Officer JERRY KWIATKOWSKI

Officer FRANK MARTIN

Officer BARBARA PALICKI

Officer FRANK RODGERS

Sergeant GEORGE THABIT

Officer JAMES TIERNEY

Officer ANDREW ZSIGRAY

**TOLEDO POLICE DIVISION**

**1986 RETIREMENTS**

**Lt. KEVIN WENDT**  
Appointed: 4-1-59  
Retired: 1-2-86

**Lt. DALE WAGNER**  
Appointed: 10-1-57  
Retired: 11-6-86

**Off. HAROLD LANDIS**  
Appointed: 4-1-68  
Retired: 2-27-86

**Capt. PATRICK McNULTY**  
Appointed: 6-1-54  
Retired: 11-6-86

**Off. CHARLES PERDEAU**  
Appointed: 11-1-59  
Retired: 7-31-86

**Sgt. NORMAN GRODI**  
Appointed: 7-1-60  
Retired: 11-6-86

**D/C RICHARD McATEE**  
Appointed: 11-1-59  
Retired: 10-14-86

**Off. PAUL FISCHER**  
Appointed: 11-1-59  
Retired: 11-7-86

**D/C RAYMOND VETTER**  
Appointed: 1-1-52  
Retired: 11-6-86

**Lt. VINCENT DiPOFI**  
Appointed: 10-1-58  
Retired: 11-13-86

**Sgt. GEORGE THABIT**  
Appointed: 10-1-56  
Retired: 11-6-86

**POLICE OLYMPICS  
AKRON, OHIO  
1986**

**GOLD MEDALISTS**

CARL LATSCHA/Kumite Karate  
GEORGE GADOURY/50 Meter Freestyle  
LARRY MORELAND/Senior Tennis  
DEBORAH HAHN/High Jump and Long Jump  
STEVE FORRESTER/High Jump

**SILVER MEDALISTS**

MARY HODAK/Racquetball  
BOB MORRISSEY/200 Meter Freestyle  
DEBORAH HAHN/100 Meter Dash, 200 Meter Dash and 400 Meter Dash  
DENNY ROSE/Billiards

**BRONZE MEDALISTS**

BEN SMITH/Achery  
CARL LATSCHA/Karate  
BOB MORRISSEY/Racquetball, 50 Meter Freestyle, 50 meter Breaststroke and 100 Meter Freestyle  
JOHN PRESTON/100 Meter Dash, 200 Meter Dash and 400 Meter Dash

**TEAM EVENTS**

**GOLD MEDALS**

GEORGE GERKEN, MICHAEL GOETZ, JIM COUCH,  
STEVE FORRESTER, BART BEAVERS, GARY BURKS,  
VOLLEYBALL TEAM

GEORGE GERKIN, MICHAEL GOETZ  
VOLLEYBALL

JIM COUCH, STEVE FORRESTER, BART BEAVERS  
VOLLEYBALL

**SILVER MEDALS**

GEORGE GADOURY, BOB MORRISSEY, PETER BOLANIS  
200 FREESTYLE and 200MEDLAY RELAYS

**BRONZE MEDALS**

LARRY MORELAND, JOHN PRESTON  
TENNIS DOUBLES

PHIL CURRY, TOM OWENS, DAVE GRAY,  
RICHARD STUDYVIN, GENE FODOR  
BOWLING

**POLICE ADMINISTRATION**



## ADMINISTRATIVE STAFF

### ADMINISTRATIVE ASSISTANT

The Administrative Assistant to the Chief of Police has many responsibilities in representing the Office of the Chief. He represents the Chief at meetings and meets with neighborhood groups regarding specific problems in the community. He also screens citizen complaints that are directed to the Chief's office and responds to complaints and inquiries that come from other city agencies including the Mayor's Office, the City Manager's Office and from individual councilmen as well as council referrals. Other duties include functioning as the news media liaison officer, Chairman of the Award's and Safety Committees and coordination of the Outside Employment (Off-Duty) request of all sworn personnel.

### CIVIL LIABILITY INVESTIGATION UNIT

This section provides a means of preparing complete and effective defenses in civil cases filed against the City of Toledo, its Officers and its employees. This investigative unit allows for the early and effective investigative involvement in tort liability matters, thus safeguarding and preserving information and evidence necessary in defending a lawsuit.

### PLANNING/INSPECTIONS SECTION

This diverse section has dual responsibilities as it's name implies. First is to develop the planning process that anticipates problems and suggests solutions to these problems. Planning suggests and develops plans that improve police services in furthering Division goals. They also review policies and procedures to ascertain suitability, determine weaknesses and devise improved methods, as well as formalizing written policies to guide employees in the effective administration of the Division. The second primary responsibility of Planning/Inspections is to conduct formal staff inspections to determine if Division policies, procedures and rules are being adhered to by all Division members. They also provide for the evaluation of systems and resources to make sure that they are being utilized to their maximum efficiency within the guidelines established by Division policy. When deviations are recognized, they then identify the causes and make recommendations to correct and improve. One final phase of this section is that of the Court Unit which serves as liaison to solve problems between the Division and the Municipal and Common Pleas Courts. This unit reviews all precipes to prevent duplication of testimony, attends pre-trials to assure that only the necessary officers are summoned and monitors the courtrooms to assist and supervise those officers appearing in court.

### INTERNAL AFFAIRS UNIT

The Internal Affairs Unit investigates, coordinates and/or exercises staff supervision on behalf of the Chief of Police in regards to complaints against, or allegations of misconduct by members of the division. This unit also has the responsibility of presenting all evidence obtained during the investigation, particularly at disciplinary hearings, should they result.

### STRESS PROGRAM

The Toledo Police Stress Unit assists police division employees and other city employees as well as their family members in resolving or attempting to resolve alcohol, emotional, marital or other

problems that may be contributing to or causing declining employee job performance. This unit works in conjunction with the City of Toledo Employee Services Program. In assessing problem situations with a client, the Stress Officer appropriately refers the individual to a suitable community resource for treatment. He also carefully screens, becomes familiar with, and maintains a working relationship with people working in many diverse community treatment programs in order to be able to make referrals. This unit is also responsible for developing training programs for the same target population, which address such areas as life style management, stress management, marriage strengthening, alcoholism and others.

DIVISION ADMINISTRATION

DIVISION ADMINISTRATION  
INTERNAL AFFAIRS

CITIZEN COMPLAINTS

	1985	1986	Difference
JAN	19	17	-10.5%
FEB	24	11	-54.0%
MAR	13	18	+38.5%
APR	19	9	-52.5%
MAY	16	10	-37.5%
JUNE	20	16	-20.0%
JULY	23	28	+22.0%
AUG	16	17	+00.1%
SEPT	17	17	N.C.
OCT	12	27	+125.0%
NOV	16	22	+37.5%
DEC	11	16	+45.0%
TOTAL	206	208	+0.9%

DIVISION COMPLAINTS

	1985	1986	Difference
JAN	12	12	N.C.
FEB	10	10	N.C.
MAR	9	11	+22.0%
APR	16	19	+19.0%
MAY	16	11	-31.0%
JUNE	10	16	+60.0%
JULY	16	12	-25.0%
AUG	25	11	-56.0%
SEPT	4	8	+100.0%
OCT	12	12	N.C.
NOV	17	16	-0.1%
DEC	6	12	+100.0%
TOTAL	153	150	-1.9%

**FIELD OPERATIONS BUREAU**

## FIELD OPERATIONS BUREAU

### PATROL SHIFTS

The uniformed patrol shifts are the nucleus of the Police Division. Through the assignment of four (4) shifts, they respond to all appropriate calls for service originated by the public, both crime related and service related. This section demands the greatest amount of personnel and the greatest amount of division resources. Fifty five percent of all personnel within the division, both civilian and sworn, are assigned to this extremely important function.

### ADMINISTRATIVE STAFF

The Administrative Staff of the Field Operations Bureau performs all of the administrative functions associated with maintaining a 455 person work force. Included within these responsibilities are; maintenance of assignment sheets, uniform clothes accounting, clothing purchase authorization, equipment inspection, and many others.

### HARBOR PATROL

The Toledo Police Division Harbor Patrol Unit patrols all navigatable waters within the jurisdiction of the City of Toledo. They perform such duties as are necessary for maintaining the safety of all persons and property in and along these many miles of water. They have enforcement responsibilities when watercraft violations are observed. The Harbor Patrol also coordinates and assists with search and rescue missions for lost or stranded persons on the waterways. They also tow disabled boats when necessary and remove hazards from the water that may pose a threat to the safety of the watercraft. Other duties include; accident reporting, boat inspections, and assisting the Coast Guard, as well as other agencies upon request. When the Harbor Patrol team is not on the waters, they can be seen at area boat shows, seminars and various other places informing the public in the safe operation of their watercraft.

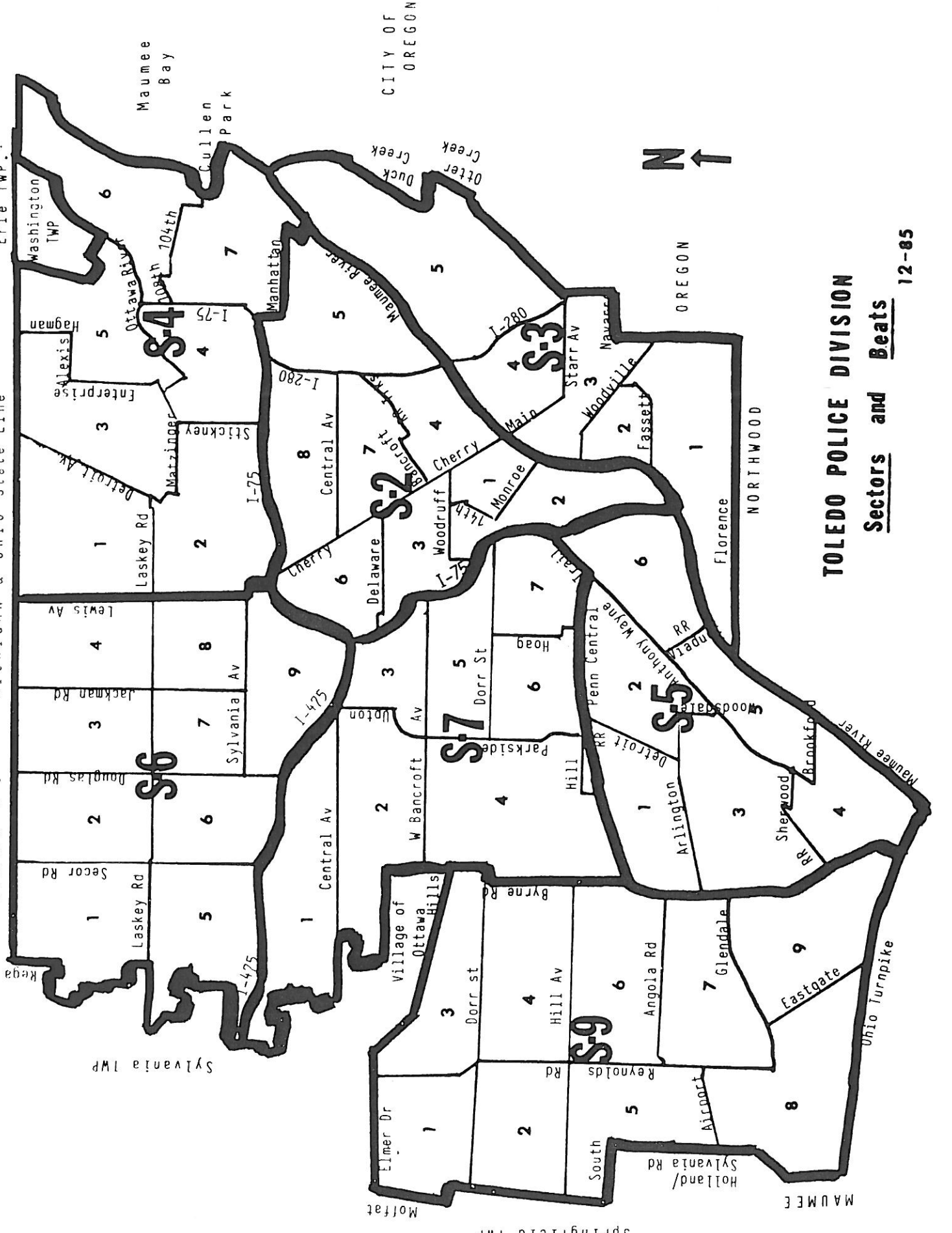
### TRAFFIC SECTION

The Traffic Section of the Toledo Police Division is the main repository of records for all traffic accidents and violations occurring in our city. They administer the School Crossing Guard program, parking meter enforcement and collection, the inspection of all Toledo taxi cabs and the inspection of the tow trucks. In order to keep our streets clear of junk autos, the Traffic section also has the responsibility to see that these ordinances are adhered to. The Traffic section also provides the rest of the Division with the many forms necessary and the technical equipment to be used in an on-going traffic enforcement, accident reduction program.

### MOUNTED PATROL UNIT – ESTABLISHED 1985

The Mounted Patrol Unit of the Division will patrol the various high volume business districts and some of the major parks of the city on an as-needed basis. Their primary function is patrol in those areas where high visibility is required for deterrence and where maneuverability is necessary to move through large crowds of people and heavy vehicular traffic. Their duties will be varied but will include traffic control and enforcement, nuisance and crime prevention, crowd control, search and rescue, and any other duties that can best be handled on horseback. In addition to these normal police duties, the Mounted Unit will act as goodwill ambassadors of the City, visiting and assisting at various community events and schools.

Bedford TWP. MICHIGAN & OHIO State Line Erie TWP.



**TOLEDO POLICE DIVISION**  
Sectors and Beats 12-85

Springfield TWP  
 Sylvania TWP  
 MAUMEE  
 Village of Ottawa Hills  
 CITY OF OREGON

FIELD OPERATIONS BUREAU  
ACTIVITY SUMMARY BY SHIFT  
1986

ACTIVITY	7X3	3X11	8X4	11X7	TOTAL
On View Citations	13,540	16,396	9,074	9,542	48,552
Accident Citations	3,909	4,912	413	956	10,190
Parking Tags	15,714	9,067	1,629	3,440	29,850
Felony Arrests (by Warrant)	1,726	1,195	161	456	3,538
Felony Arrests (On View)	184	514	201	514	1,413
Misdemeanor Arrests (by Warrant)	2,275	4,891	1,978	4,375	13,519
Misdemeanor Arrests (On View)	851	3,863	2,581	5,569	12,864
Juvenile Arrests (by Warrant)	320	342	101	130	893
Juvenile Arrests (On View)	395	817	201	334	1,747
Minor Misdemeanor Citations	190	556	113	67	926

SOURCE: Self Reported Activity Reports

FIELD OPERATIONS BUREAU  
 UNIFORM PATROL ACTIVITIES  
 1986  
 SUMMARY OF TRAFFIC CITATIONS

OFFENSE	CITATIONS ISSUED	% OF TOTAL
RED LIGHT.....	6,685	11.1%
SPEEDING.....	11,674	19.4%
RECKLESS OPERATION.....	4,320	7.2%
DRIVING WHILE INTOXICATED.....	2,595	4.3%
IMPROPER TURNS.....	2,152	3.6%
ONE-WAY STREET.....	671	1.1%
NO OPERATORS LICENSE.....	6,951	11.6%
FAILURE TO YEILD.....	853	1.4%
LEFT OF CENTER.....	564	0.9%
STOP SIGN.....	2,598	4.3%
IMPROPER LICENSE PLATES.....	6,584	11.0%
IMPROPER LIGHTS.....	2,727	4.5%
EXCESSIVE NOISE.....	773	1.3%
JUVENILE CITATIONS.....	3,792	6.3%
OTHER VIOLATIONS.....	7,124	11.9%
<b>TOTAL</b>	<b>60,063</b>	<b>100%</b>

SUMMARY OF PARKING TAGS

TAGS ISSUED BY UNIFORM OFFICERS.....	29,850	48.1%
TAGS ISSUED BY TRAFFIC AIDES.....	32,231	51.9%
<b>TOTAL</b>	<b>62,081</b>	<b>100%</b>
.....		
PARKING TAGS PAID	36,862	59.4%
.....		



FIELD OPERATION BUREAU  
TRAFFIC SECTION  
VEHICLE CRASH COMPARISON

1986

1985

	Property Damage	Injury Accidents	Fatal Accidents	Fatalities	TOTALS
JAN	1167	445	2	2	1614
FEB	1228	473	3	3	1704
MAR	959	391	5	6	1355
APR	1074	520	1	1	1594
MAY	1121	561	5	6	1688
JUNE	1113	590	3	3	1706
JULY	1068	561	4	4	1633
AUG	1039	553	2	3	1594
SEPT	1129	501	5	7	1635
OCT	1260	557	7	7	1824
NOV	1245	475	8	8	1728
DEC	1219	501	6	6	1726
<b>TOTALS</b>	<b>13,622</b>	<b>6,128</b>	<b>51</b>	<b>55</b>	<b>19,801</b>

	Property Damage	Injury Accidents	Fatal Accidents	Fatalities	TOTALS
1143	428	3	4	1574	
1013	338	2	2	1353	
968	419	3	3	1390	
1014	419	2	2	1435	
1022	487	7	7	1516	
1095	516	2	2	1613	
1072	461	3	4	1537	
1067	563	1	1	1631	
1101	489	6	6	1596	
1277	523	3	3	1803	
1269	542	2	2	1813	
1954	531	3	3	2488	
<b>13,995</b>	<b>5,747</b>	<b>37</b>	<b>39</b>	<b>19,749</b>	

ACCIDENT COMPARISON 1986 to 1985

PROPERTY DAMAGE ACCIDENTS.....	- 2.7%
INJURY ACCIDENTS.....	+ 6.6%
FATAL ACCIDENTS.....	+40.5%
FATALITIES.....	+41.0%
TOTAL ACCIDENT INCIDENTS.....	+ .03%

### HOURLY BREAKDOWN OF ACCIDENTS

TIME OF DAY	DAY OF WEEK							TOTAL
	SUN	MON	TUES	WED	THUR	FRI	SAT	
0001-0100	151	61	56	59	74	81	139	621
0101-0200	118	34	40	44	34	50	116	436
0201-0300	140	51	45	40	47	64	160	547
0301-0400	64	23	21	22	17	29	59	235
0401-0500	17	16	20	8	14	24	28	126
0501-0600	28	26	25	22	21	33	28	184
0601-0700	27	59	53	44	65	77	24	349
0701-0800	22	173	154	162	165	182	55	915
0801-0900	28	155	142	126	150	179	62	842
0901-1000	53	111	106	124	108	108	90	700
1001-1100	70	114	114	118	114	117	105	751
1101-1200	75	156	124	146	137	184	148	970
1201-1300	118	180	169	155	166	215	178	1182
1301-1400	143	169	170	139	163	189	154	1127
1401-1500	154	200	206	223	209	254	127	1373
1501-1600	147	260	288	262	238	275	175	1645
1601-1700	133	213	249	233	225	310	162	1526
1701-1800	140	217	260	233	227	272	132	1481
1801-1900	129	139	160	156	134	184	144	1046
1901-2000	126	102	117	142	122	176	125	910
2001-2100	83	114	99	135	106	155	124	816
2101-2200	95	93	98	114	114	157	126	796
2201-2300	79	76	73	113	94	143	135	713
2301-0000	55	45	48	54	74	115	119	510
TOTALS	2195	2787	2837	2874	2820	3573	2715	19,801

FIELD OPERATIONS BUREAU

MOUNTED PATROL SUMMARY

1986

ACTIVITY

Dispatched Calls.....	992
Arrests.....	38
Traffic Citations.....	131
Parking Tags Issued.....	703
Parking Violation Warnings.....	2220
Crime Reports Filed.....	155
Accident Reports Filed.....	144
Citizen Contacts.....	32,521
Special Events Assignments.....	51

The Toledo Police Mounted Patrol Unit began operation on March 3, 1986. Their primary mission is to increase visible police presence and utilize the greater mobility of horses in congested, crowded areas which may be inaccessible to ordinary foot or mobile officers.

FIELD OPERATIONS BUREAU  
HARBOR PATROL SUMMARY  
1986

MAN-HOURS WORKED

<u>ACTIVITY</u>	<u>HOURS WORKED</u>
Patrol.....	4608
Inspection hours.....	14
Maintenance hours.....	513
Court hours.....	6
Educational Contact hours.....	64
Training hours.....	54
<hr/>	
TOTAL	5259

PATROL CONTACTS

<u>ACTIVITY</u>	<u>NUMBER OF CONTACTS</u>
Citations & Arrests.....	39
Warnings.....	318
Accident Investigations.....	20
Assists (other agencies, tows).....	63
Written Boat Inspections.....	38
Visual Boat Inspections.....	129
Complaints Investigated.....	152
Navigational Aid/Hazard Checks.....	36
<hr/>	
TOTAL	795

FIELD OPERATIONS BUREAU

TRAFFIC SECTION  
JUNK AUTO UNIT

1986

COMPLAINTS RECEIVED.....	2,635
COMPLAINTS CLEARED.....	2,544
VEHICLE SITES CHECKED.....	5,762
VEHICLES JUNKED.....	2,106
PRIVATE PROPERTY TOWS.....	1,197
STREET TOWS.....	63

Private Property Tows were up 128% over 1985.

Overall complaints were up 52% over 1985.

Faint, illegible text at the top of the page, possibly a header or introductory paragraph.

**INVESTIGATIVE SERVICES BUREAU**

## INVESTIGATIVE SERVICES BUREAU

### AUTO THEFT UNIT

The primary role of this unit is to investigate all phases of auto theft and recoveries in an attempt to establish the pertinent information which will lead to the successful arrest and prosecution of the perpetrator. This unit accomplishes this by maintaining files of stolen and recovered vehicles and by working actively with the uniformed patrol units and adjacent police agencies in their motor vehicle investigations. By maintaining a close working relationship with the various title officers and the Bureau of Motor Vehicles in Columbus, they attempt to identify professional motor vehicle theft rings as well as the routine teenage joyrider. They not only concern themselves with automobiles but also with the theft prevention and investigation of heavy industrial equipment and marine type equipment offenses. Also included in their daily activities is the investigation of altered, concealed, or obliterated vehicle identification numbers and the investigation of vehicle arson.

### BURGLARY UNIT

The Burglary Unit investigates all residential and commercial breakins that are reported to the police. These investigations include the development of profiles of burglary suspects by examining crime scenes, interpreting physical evidence, interrogating suspects and interviewing witnesses. In order to link suspects and stolen items to the particular offense, the burglary unit provides constant communication with property recovery personnel. Information is collected and then disseminated to the patrol operations in order to advise them on particular burglary patterns. Citizen cooperation is solicited by presenting programs to the community illustrating a realistic picture of the burglary problem, and at which time they explain the role of the responding officers and the investigator assigned to the case.

### CHECK SQUAD

This unit provides a complete investigative service pertaining to crimes of forgery and passing of bad checks. They maintain files on active and inactive offenders of these types of crime and of stolen checks as well as check writing machines. One of their primary roles is that of liaison with area banks and commercial lending institutions in disseminating information to assist in apprehending persons involved in forgery and the cashing of bad checks.

### HOMICIDE UNIT

The Homicide Unit has a wide range of investigative responsibilities from the investigation of purposeful deaths caused by violent means, to simple assault investigations. They also work in close relationship to the Lucas County Coroner and his investigators. They also investigate felonious assaults, aggravated assaults, kidnapping, abduction, and carrying concealed weapons felony offenses. They are also called upon to investigate unattended death situations that are generally not criminal in nature.

### MISSING PERSONS UNIT

The Missing Persons Unit, as its name implies, takes reports of missing people and runaways. They evaluate, coordinate, and investigate with the aim of locating or apprehending these parties. Going even further, they build criminal cases against those adults who willfully harbor runaways in an effort to reduce the number of places juvenile runaways can go with the community. In order to update and improve their operation, they continually stay abreast of National changes that have occurred in this investigative area.

## PERSONAL ASSAULT UNIT

This unit investigates all sex related crimes including sexual child abuse, and telephone harassment complaints, excluding prostitution and pornography. They attempt to evaluate and recognize series of similar sex related crimes in order to forward this information to the appropriate street patrol units. An on-going program is working with the Child Sexual Abuse Team at the Medical College of Ohio in order to improve procedures related to the treatment of both victim and offenders. They also work actively with members of Toledo United Against Rape in training programs.

## SCIENTIFIC INVESTIGATION UNIT

The S.I.U. visits all major crime scenes with the task of sketching the scene, photographing the scene, search for fingerprints and lifting prints if found. They collect and preserve all physical evidence for future analysis and/or court presentations. Additionally, they attend autopsies when required, recording the findings of the criminal pathologists and collect any evidence attained as a result of the autopsy.

## ADMINISTRATIVE STAFF

The Administrative Staff of the Investigative Services Bureau has the administrative duties to maintain employee time sheets, sick leave, vacation and all other records keeping in relation to this bureau's personnel. They coordinate all roll call training, supervise the civilian desk technicians, and provide a court officer for all felony arraignments and case coordination with the County prosecutor and Grand Jury. This unit also handles the service of all subpoenas to bureau personnel. Due to the extreme public interest shown to this bureau, the Administrative Staff serves as liaison with the press and other news media. Another of their growing responsibilities is the highly successful Crime Stopper Program.

## PROPERTY RECOVERY UNIT

The Property Recovery Unit monitors all of the local pawnshops, junkyards, and gold/silver shops. They also operate undercover STING type operations as well as investigating stolen and recovered property cases.

## ROBBERY UNIT

This unit investigates all commercial, street and financial institution robberies. Suspect auto and suspect photo files are kept to maintain current and past robbery events records in the event of similar offenses occurring. The robbery unit also correlates all information regarding suspects and possible locations for stake-outs with the uniformed units with the intention of on scene apprehension. They are also called upon to conduct line-ups, photo identifications and one-on-one street identifications.

## SPECIAL SQUAD

The Special Squad processes and investigates miscellaneous crimes such as theft, credit card offenses, vandalism, and extortion. They also have the responsibility of serving arrest warrants issued in other jurisdictions when the person sought is thought to be in Toledo. This unit processes all fugitives and U.S. Servicemen who are away without leave.



## YOUTH SERVICES SECTION

This section has the extremely important responsibility of investigating crimes which are committed by or perpetrated against juveniles, with the exception of murder and felony sex offenses. Additionally, they investigate child abuse cases and status offense cases. They are also involved in many family related problems such as Domestic Violence, unruly youths, Contributing to the delinquency of minors and child stealing.

## VICE-METRO SECTION

The Vice-Metro Unit enforces all laws and regulations which are aimed at reducing or eliminating those activities related to drug trafficking, prostitution, gambling and liquor violations. They review all applications for arcades, bars, phrenologists, massage parlors, and dance halls. Within this area of responsibility they conduct inspections of these types of businesses and they perform background investigations of those persons running the same. This section is also called upon frequently to engage in educational programs dealing with drugs and gambling laws. They also present community awareness programs to schools, churches, and other groups upon request.

INVESTIGATIVE SERVICES BUREAU

CRIMES AGAINST PERSONS SECTION

1986

HOMICIDE UNIT

Complaints Received.....	13,138
Homicides.....	21
Misdemeanor Complaints.....	11,055
Felony Complaints.....	633
Domestic Violence Complaints.....	4,062
Weapons Related Complaints.....	442
Miscellaneous Complaints.....	403
Complaints Investigated.....	1,088
Complaints referred to Coroner.....	655
Number of Arrests.....	2,212
Number of Unsolved Homicides.....	4*
Complaints Exceptionally Cleared.....	10,455
Inactive Complaints.....	469
Unfounded Complaints.....	12

\* Two of the four unsolved Homicides were cleared by arrests in January 1987.

ROBBERY UNIT

Complaints Received.....	1,088
Complaints Investigated.....	1,088
Commercial Robberies.....	148
Financial Institutions.....	9
Street Robberies.....	615
Purse Snatch Robberies.....	312
Number of Arrests.....	206
Complaints Exceptionally Cleared.....	70
Inactive Complaints.....	819
Unfounded Complaints.....	33

PERSONAL ASSAULT UNIT

Complaints Received.....	2,046
Rapes.....	306
Attempted Rape.....	32
Other Felony Offenses.....	534
Misdemeanor Offenses.....	1,512
Complaints Investigated.....	1,418
Number of Arrests.....	325
Complaints Exceptionally Cleared.....	505
Inactive Complaints.....	533
Unfounded Complaints.....	73

INVESTIGATIVE SERVICES BUREAU  
 CRIMES AGAINST PROPERTY SECTION

1986

BURGLARY UNIT	1986	1985
Total Complaints Received.....	6269	6316
Complaints Investigated.....	4021	3863
Arrests.....	653	515
Complaints Exceptionally Cleared.....	561	1018
Complaints Reduced.....	1261	1169
Complaints Unfounded.....	175	143
Residential Burglaries.....	4380	4311
Commercial Burglaries.....	1177	1090
CHECK SQUAD	1986	1985
Total Complaints Received.....	5480	4069
Complaints Investigated.....	1419	1332
Arrests (Felony Only).....	877	716
Complaints Exceptionally Cleared.....	346	446
Misdemeanor Complaints.....	3888	2657
AUTO UNIT	1986	1985
Total Complaints Received.....	3092	2857
Complaints Investigated.....	1880	1621
Arrests.....	450	373
Stolen Autos.....	2184	2394
Recovered Autos.....	2365	1769
Complaints Exceptionally Cleared.....	233	218
SPECIAL THEFT UNIT	1986	1985
Total Complaints Received.....	21205	18407
Complaints Investigated.....	2013	1642
Arrests.....	2958	2955
Complaints Exceptionally Cleared .....	3710	2874
Complaints Unfounded.....	107	84
Warrants Issued (Arrests Pending).....	3708	2930

INVESTIGATIVE SERVICES BUREAU

1986

VICE-METRO SECTION

**ARREST SUMMARY**

	1986	1985
Prostitution.....	718	774
Gambling.....	25	20
Liquor Violations (Citations).....	152	125
Drug Related Arrests.....	706	497
Miscellaneous Arrests.....	217	612
<b>Total</b>	<b>1,818</b>	<b>2,028</b>

**OTHER ACTIVITIES**

Liquor License Applications Processed.....	269	271
Search Warrants Executed.....	96	78
Total Value of Drugs Seized.....	\$2,697,303	\$268,404
Public Speeches & Training.....	30	42

**SCIENTIFIC INVESTIGATION UNIT**

**CRIME SCENE ASSIGNMENTS**

	1986	1985
Latent Fingerprint Search.....	636	736
Latent Fingerprint Lifts.....	302	340
Photography Assignments.....	665	655
Neutron Activation Analysis Test.....	63	52
Crime Scene Sketches.....	14	36
Moulage Casts.....	14	14

**OTHER ASSIGNMENTS**

Fingerprint Comparisions.....	253	329
Autopsies Attended.....	35	45
Polygraphs Given.....	150	163

INVESTIGATIVE SERVICES BUREAU

YOUTH SERVICES SECTION

1986

JUVENILE UNIT

Complaints Received.....	12,236	100.0%
Complaints Cleared		
By Arrests.....	2,721	22.5%
Inactive.....	3,143	26.0%
Special Investigations.....	2,950	24.0%
Exceptionally Cleared.....	1,714	14.0%
Cases Adjusted.....	1,628	13.0%
Cases Unfounded.....	80	.5%

MISSING PERSONS UNIT

Local Persons Reported Missing.....	3,453	100.0%
Juvenile Males.....	1,119	32.4%
Juvenile Females.....	1,379	40.0%
Adult Males.....	533	15.4%
Adult Females.....	422	12.2%
Local Persons Located and Cancelled.....	3,446	99.8%
Outside Persons Reported Missing.....	249	100.0%
Juvenile Males.....	112	45.0%
Juvenile Females.....	106	42.6%
Adult Males.....	18	7.2%
Adult Females.....	13	5.2%
Outside Persons Located and Cancelled.....	251	+100.0%*

\*Includes two persons reported missing in 1985

INVESTIGATIVE SERVICES BUREAU  
YOUTH SERVICES SECTION

OFFENSE	Cited to Court		Cases Adjusted		Adult Arrests	Exceptionally Cleared Complaints	Inactive & Unfounded Complaints	Extra Clearances
	BOYS	GIRLS	BOYS	GIRLS				
Arson & Related Offenses	145	28	126	9	2	249	542	21
Homicide & Assault	255	96	189	55	31	665	525	15
Kidnapping & Extortion	3	3	0	0	18	11	57	0
Drug Related Offenses	9	6	11	15	1	0	3	0
Offenses Against Family	764	860	516	635	298	322	143	9
Offenses Against Justice	4	0	1	0	0	0	1	0
Offenses Against Public Peace	85	25	128	38	9	155	81	4
Robbery Burglary Trespassing	194	14	71	11	7	84	351	13
Sex Related Offenses	13	0	4	0	3	15	18	0
Theft & Fraud	317	47	96	28	26	208	1495	34
Weapons Control	11	1	2	1	0	1	0	0
Miscellaneous Offenses	6	0	4	0	3	4	7	0
<b>TOTALS</b>	<b>1806</b>	<b>1080</b>	<b>1148</b>	<b>792</b>	<b>398</b>	<b>1714</b>	<b>3223</b>	<b>96</b>

<b>Grand Totals</b>	<b>2886</b>	<b>1940</b>	<b>398</b>	<b>1714</b>	<b>3223</b>	<b>96</b>
---------------------	-------------	-------------	------------	-------------	-------------	-----------

COMPLAINTS RECEIVED.....	1986	1985	% +/-
MISSING PERSONS/RUNAWAYS.....	12,236	10,791	+8.5%
RECOVERED STOLEN PROPERTY.....	3,453	2,752	+25.5%
	\$27,300	\$47,616	-42.7%

TOLEDO POLICE DIVISION  
CRIME STOPPER PROGRAM

	Calls Logged	Cases Cleared	Arrests	Indictments
Robbery	47	3	5	5
Homicide	36	4	4	5
Burglary	93	15	10	4
Auto Theft	53	4	5	3
Theft-Other	85	7	5	4
Arson	28	2	2	2
Drugs	512	24	19	15
Rape	15	0	0	0
Hit-Skip	7	1	1	0
Weapons	3	1	1	0
Escape	2	2	2	1
Receiving	46	8	10	4
Liquor	7	0	0	0
Warrants	104	87	25	0
Forgery	5	0	0	0
Gambling	7	0	0	0
Miscellaneous	70	10	15	10
<b>TOTAL</b>	<b>1,120</b>	<b>168</b>	<b>104</b>	<b>52</b>

Total Amount of Rewards Awarded in 1986 was \$19,600.00

**SUPPORT SERVICES BUREAU**



## SUPPORT SERVICES BUREAU

### COMMUNICATIONS SECTION

The Communications Section, as its name implies, is the primary hub of the entire police division's emergency communications network including; telephone communications, radio communications, and teletype communications. This section receives and records on tape, all necessary incoming calls, both by radio and by telephone. They also dispatch all necessary police units to calls for service and other police situations. They monitor the National Weather Service teletype and broadcast all severe weather information. Additionally, they make tape recordings of all serious incidents and testify in court when required. The Communications Section also has the extremely important function of maintaining the portable radio inventory and the battery management program, to insure the proper functioning of these portable radios.

### CRIME LABORATORY

The Toledo Police Regional Crime Laboratory provides their technical services to all area law enforcement agencies. Working in conjunction with the Scientific Investigation Unit of this Division, they develop proper methods of collecting and preserving physical evidence. Lab services which are provided include; forensic drug analysis, arson analysis, firearms identification, serial number restoration, blood alcohol determination, serological testing, hair and fibre determination and various other microanalytical techniques. Crime lab personnel are also called upon and recognized as court room experts and spend a great deal of time in the various courts of law testifying.

### CRIME ANALYSIS UNIT

The Crime Analysis Unit provides the division with a comprehensive computer analysis of Part I and Part II crime offenses. By gathering, analyzing, and storing information, then disseminating this information to patrol units, the appropriate police action can be taken to reduce or eliminate this specific problem.

### PROPERTY MANAGEMENT SECTION

The Property Management Section has the critical responsibility of maintaining control and accountability of all Division owned property. Included within this is the major task of operating the Division Motor Pool, overseeing the operation of the Police Armory and its arsenal, and maintaining the proper and legal functioning of the Police Property Room. Not only are the vehicles one of this section's primary responsibilities but in addition all of the equipment inside these vehicles that are used daily by our Patrol personnel. This section also conducts the Police Division Auctions in which autos, bicycles, and any other property confiscated, recovered and never claimed by its rightful owner is offered at public auction. This section is also the receiving point for all incoming and outgoing deliveries for the entire Division.

### RECORDS SECTION

The Police Division Records Section acts as the central repository for all Division crime reports, criminal histories, lost, stolen and recovered property and all other operational information. By maintaining a historical record of Division activities such as files and updates on criminals, suspected criminals, persons wanted on warrants, arrests, criminal activity statistics, fingerprints, photographs, stolen and recovered property and vehicles, this information is readily accessible in useable form by members of the Division and other qualified agencies.

**SUPPORT SERVICES BUREAU**  
**RECORDS SECTION SUMMARY**  
**1986**

**REPORTS DESK**

Crime Reports..... 82,474  
 Telephone Reports... 12,501  
 Total Reports..... 94,975  
  
 Reports Microfilmed 87,000

**ARREST/WARRANTS DESK**

Warrant Grace Letter 4,612  
 Letters Returned.... 701  
 Total Summoned..... 3,911  
  
 Local Warrants..... 23,788  
 Outside Warrants.... 145  
 Total Warrants..... 23,933  
  
 Warrants Withdrawn.. 7,520  
  
 TOTAL ARRESTS..... 15,692

**RECORDS DESK**

Record Checks  
 Prosecutor..... 647  
 City Licenses..... 636  
 City Probation.... 437  
 County Probation.. 3  
 Handgun Cards..... 2,161  
 Other Paid Checks. 7,745  
 Other Unpaid Checks 4,234  
  
 TOTAL RECORD CHECKS.. 15,899

**IDENTIFICATION UNIT**

Fingerprints..... 26,262  
 Film Processed..... 2,119  
 Color Prints..... 801  
 B/W Enlargements... 4,726  
 Latent Prints..... 10  
 Miscellaneous..... 6,304  
  
 RECORDS EXPUNGED... 557

**AUTO DESK**

Reported Stolen..... 2,894  
 Stolen Recovered..... 2,431  
 Auctioned Autos..... 83  
 Autos Junked..... 1,753

**Autos Towed**

North District..... 5,800  
 South District..... 4,873  
 East District..... 1,139  
 Kasle Iron Junks..... 2,235  
 Heavy Duty Tows..... 95

TOTAL AUTOS TOWED..... 14,142

**NORIS ENTRIES**

Warrant Entries..... 21,794  
 Arrest Entries..... 10,963  
 A.T.L. Entries..... 3,625  
 New RID Entries..... 3,374  
 Cancellations..... 27,879  
 Modifications..... 41,101  
 Transfers..... 940

TOTAL NORIS ENTRIES... 109,676

**MAIL CLERK DESK**

Total incoming mail... 41,253  
 Letters Processed..... 2,430  
 Outgoing Letters..... 157  
 Insurance Reports..... 3,724  
 Claim Letters..... 99

**INCOME RECEIVED**

Crime Reports/counter. \$ 5397  
 Crime Reports/Mail.... \$11157  
 Record Checks/counter. \$14667  
 Record Checks/Mail.... \$ 7012  
 Auto Auction..... \$24445  
 Identification..... \$ 3682

TOTAL INCOME 1986..... \$66360

**SUPPORT SERVICES BUREAU  
COMMUNICATIONS SECTION SUMMARY 1986**

Total Incoming Telephone Calls . . . . . 408,250  
 Incoming Calls Answered Within 24 Seconds . . . . . 372,676  
 Calls to Recorder (After 24 Seconds) . . . . . 35,574  
 Calls Abandoned by Calling Party . . . . . 18,985  
 Calls Referred to Telephone Reporting Unit . . . . . 14,163

**OF THE TOTAL INCOMING CALLS, 87.7% WERE ANSWERED WITHIN 24 SECONDS**

CALLS FOR SERVICE ANSWERED	0600X1400	1400X2200	2200X0600	Total for Year
Mobile Response 1986	56,372	105,554	103,109	264,990
Mobile Response 1985	55,194	95,781	94,776	245,751

THERE WAS A TOTAL INCREASE OF 19,239 UNITS SENT ON CALLS FOR SERVICE OVER  
1985

CRIME LABORATORY 1986 SUMMARY

<u>ANALYSIS TYPE BY CRIME</u>	<u>1985</u>	<u>1986</u>	<u>CHANGE</u>
General Analytical Chemistry . . . . .	39	47	+8
Serological/Microscopy . . . . .	167	149	-18
Firearms Id./Toolmarks. . . . .	122	135	+13
Drug Chemistry . . . . .	1114	926	-188
Alcohol Determination . . . . .	230	196	-34
Polygraph . . . . .	41	17	-24
Misc. . . . .	8	12	+4
<b>Total Cases . . . . .</b>	<b>1697</b>	<b>1621</b>	<b>-76</b>
 <u>SUBPOENAS</u>			
Subpoenas Received . . . . .	229	232	+3
 <u>CASES RECEIVED</u>			
Toledo Police Division. . . . .	1505	1351	-154
Regional Agencies . . . . .	194	270	+76

SUPPORT SERVICES BUREAU

PROPERTY MANAGEMENT SECTION 1986 SUMMARY

	1986	1985	CHANGE	%
Total Fleet Mileage.....	4,499,938	4,374,120	+125,818	+2.88%
Fuel Consumption..... (Gasoline)	430,821	428,353	+ 2,468	+0.58%
Miles per Gallon.....	10.45	10.21	+ 0.24	+2.35%
Police Vehicle Accidents	177	201	- 24	-11.9%
Property Room Cases.....	6,272	5,633	+ 639	+11.3%

INVENTORY OF DIVISION VEHICLES

Harbor Patrol Boats.....	2
Large Vans.....	3
Mounted Patrol Vans.....	2
Mobile Command Post.....	1
Mounted Patrol Trailers....	2
Bomb Trailer.....	1
Three Wheeled Motorcycles..	2
Electric Scooters.....	3
4 Wheel Drive Vehicles.....	7
Traffic Aide Vehicles.....	9
Patrol Wagons.....	19
Marked Police Patrol Cars..	95
Unmarked Police Cars.....	133

ARMORY INVENTORY

Handguns.....	901
Shotguns.....	190
Carbines.....	36
Rifles.....	13
Tear Gas Guns.....	18

GENERAL FUND DEPOSITS

1986 AUCTIONS..	\$19,492.00
Unclaimed Money	\$19,121.93
TOTAL	----- \$38,613.93

ADMINISTRATIVE SERVICES BUREAU

## ADMINISTRATIVE SERVICES BUREAU

### COMMUNITY AFFAIRS SECTION

The Community Affairs Section of the Toledo Police Division acts as liaison between community organizations and the Division by attending meetings, providing information and reporting to the Administration on past, current and future community problems. Another primary responsibility of this section is to investigate complaints from the local school systems involving the safety of students, teachers and administrators as well as investigating complaints involving neighbors that cannot be diffused or alleviated by conventional police practices. The Community Affairs Section also conducts traffic and personal safety programs in the schools and they coordinate the pre-school summer Safety program, Safe-T-City. The Crime Prevention function is also the responsibility of this Section.

### PERSONNEL AND FISCAL AFFAIRS SECTION

This administrative section prepares and administers the division's budget and controls and coordinates the purchasing of all equipment and supplies for the division. They also are responsible for the payroll function, personnel record keeping, affirmative action statistics, Equal Employment Opportunity plans and maintaining the police Time Bank. They also assist in the labor relations function including contract negotiations, grievance response, grievance settlement and arbitration.

### TRAINING AND RECRUITMENT SECTION

The Training and Recruitment section has the responsibility to research, plan, develop, coordinate, and produce skills and career development training programs for all levels of Division personnel. They serve as the Division's focal point for the recruitment, selection and training of prospective and newly sworn personnel. They also manage and maintain the Division Training facilities and equipment, as well as all training records and files. The Training and Recruitment section acts as liaison between the Division and the Ohio Peace Officer's Training Council.

ADMINISTRATIVE SERVICES BUREAU  
PERSONNEL & FISCAL AFFAIRS SECTION

1986 BUDGET SUMMARY

BUDGET CATEGORY	1986	1985	%DIFFERENCE
Salaries & Personnel Services	\$35,553,650	\$33,252,160	+6.9%
Supplies	\$ 770,910	\$ 683,205	+12.8%
Contractual Services	\$ 3,079,620	\$ 1,969,930	+56.3%
Capitol Outlays	\$ 855,810	-0-	N/A
TOTAL	\$40,259,990	\$35,905,295	+ 12.1%



COMMUNITY AFFAIRS SECTION

1986 SUMMARY OF ACTIVITIES

COMMUNITY RELATIONS PROGRAMS

ACTIVITY	1986	1985	%Change
Officers Assigned	14	14	-0-
School Presentations	648	124	+423.0%
Attendance	30,215	16,273	+81.0%
Public Talks	202	76	+166.0%
Attendance	5,517	3,639	+51.7%
Child Fingerprint Programs	27	48	-43.7%
Children Printed	1,609	7,196	-77.6%
Meetings Attended	491	524	-6.3%
Citizen Complaints	359	344	+4.4%
School Related Complaints	83	203	-59.0%
Arrests & Assists	16	88	-82.0%
Surveillances	101	876	-885.0%
Referrals	67	101	-34.0%

---

SCHOOL SAFETY PROGRAM

---

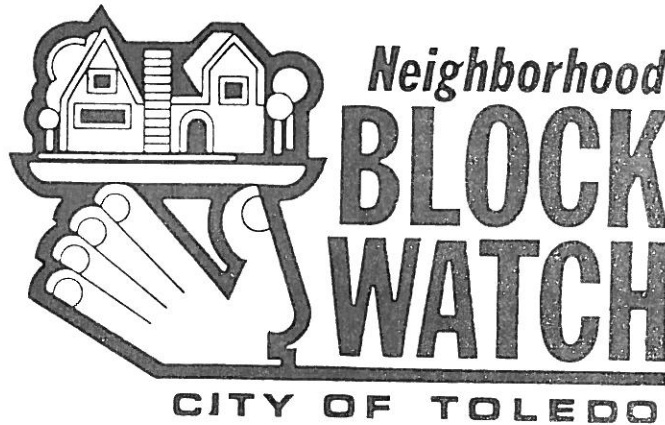
ACTIVITY	1986	1985	%Change
Safe-T-City Participants	1172	1172	-0-
Patrol Leadership Camp	83	67	+19.3%
School Safety Assemblies	687	527	+30.4%
Attendance	54,589	68,248	-20.0%

COMMUNITY AFFAIRS SECTION

1986 SUMMARY OF ACTIVITIES

BLOCK WATCH PROGRAM

	1986	1985
Neighborhood Block Watch Presentations	145	176
Persons in Attendance	5,113	7,200
New Residences Enrolled	4,242	6,083
Total Block Watch Program Membership	34,049	29,807

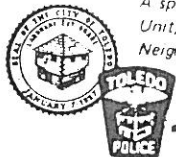


**In cooperation with:**

- **The Toledo Police Division**
- **The Mayor's Panel on Block Watch**

RUEBEN BUMBUS  
HARRY MORRELL  
JOE RUTHERFORD  
JOHN McHUGH  
VIRGINIA FRENCH  
RAY DICK

BILL COPELAND  
SAM BURNETT  
SHELLY LEESTMA  
PAUL STEWART  
VIVIAN STEWART  
ALICE LYCZKOWSKI  
*"Chairman"*



*A special thanks to the Toledo Police Division Crime Prevention Unit, and the many volunteers committed to the success of the Neighborhood Block Watch Program.*

**People helping people...**

## TRAINING AND RECRUITMENT SECTION

### 1986 ANNUAL HIGHLIGHTS

On February 7, 1986, the 40<sup>th</sup> Basic Police Class graduated 58 Police Officer Trainees after 23 weeks of intensive training.

208 applicants for the position of Police Officer were processed by our Pre-Employment Screening process. Applicants underwent a series of psychological tests and interviews, in addition to medical examinations and criminal, traffic, financial and personal record evaluations.

Sixteen successful applicants were selected for the 41<sup>st</sup> Basic Police Class and began their training on September 19, 1986.

An entirely new recruitment program was begun in October 1986. Over 1800 people made application for appointment to the Division.

In addition to the two Academy classes and the recruitment program, the training section conducted annual In-Service Training on Rape Crisis Intervention, Building Searches, Firearms Tear Gas, Liability Management and PR-24 recertifications.

Each member of the Division is required to pass a minimum firearms proficiency test twice a year.



ADMINISTRATIVE SERVICES BUREAU  
PERSONNEL & FISCAL AFFAIRS SECTION  
1986  
PERSONNEL & SALARY SUMMARY

### TOTAL DIVISION POLICE PERSONNEL BY SEX AND RACE

RANK	WM	WF	BM	BF	HM	HF	TOTAL
CHIEF & DEPUTY CHIEFS	4		1				5
CAPTAINS	16						16
LIEUTENANTS	34		2				36
SERGEANTS	84	5	10	1	2		102
PATROL OFFICERS	408	44	74	29	22	4	581
<b>TOTALS</b>	<b>546</b>	<b>49</b>	<b>87</b>	<b>30</b>	<b>24</b>	<b>4</b>	<b>741</b>

### PROMOTIONS BY SEX AND RACE

RANK	WM	WF	BM	BF	HM	HF	TOT
CHIEF OF POLICE							
DEPUTY CHIEF			1				1
CAPTAIN							
LIEUTENANT	2		1				3
SERGEANT	1		1				2
<b>TOTALS</b>	<b>3</b>		<b>3</b>				<b>6</b>

### SALARY RANGE BY RANK

RANK	SALARY RANGE
CHIEF OF POLICE	53,377.00
DEPUTY CHIEF	47,363.00 - 49,078.00
CAPTAIN	43,730.00 - 45,311.00
LIEUTENANT	39,730.00 - 41,255.00
SERGEANT	31,720.00 - 35,874.00
PATROL OFFICER	23,523.00 - 30,927.00



UNIFORM CRIME REPORT  
1986 SUMMARY OF OFFENSES

.....

CRIMES AGAINST PERSONS

NUMBER OF OFFENSES

<u>OFFENSE</u>	<u>1986</u>	<u>1985</u>	<u>1984</u>
Murder	21	27	34
Manslaughter	0	0	4
Rape	297	236	215
Robbery	1,120	970	1,095
Aggravated Assault	1,022	926	763
SUB-TOTAL	2,460	2,159	2,111

.....

CRIMES AGAINST PROPERTY

NUMBER OF OFFENSES

<u>OFFENSE</u>	<u>1986</u>	<u>1985</u>	<u>1984</u>
Burglary/Breaking & Entering	5,992	5,861	6,285
Larceny Over \$300	3,869	3,499	3,504
Larceny Under \$300	12,316	11,543	12,068
Auto Theft	2,778	1,872	2,131
SUB-TOTAL	24,955	22,775	23,988

.....

GRAND TOTAL

27,415

24,934

26,099