

TOLEDO POLICE DIVISION

PROUDLY SERVING TOLEDO

1867-1990

1990 ANNUAL REPORT



THOMAS R. HOOVER
City Manager

JOHN ALEXANDER
Safety Director

DIVISION OF POLICE
SAFETY BUILDING
525 N. ERIE STREET
TOLEDO, OHIO 43624-1345

MARTI D. FELKER
Chief of Police
(419) 245-3200
(FAX) 245-3228

April 1, 1991

Thomas R. Hoover
City Manager
One Government Center
Toledo, Ohio 43624

Dear Mr. Hoover:

It is with great pride and confidence in the continued professional dedication and competence of Division employees that I submit the Toledo Police Division, 1990 Annual Report.

Throughout the past year, the Division continued to improve its operational capability to provide for the safety and security of the citizens of Toledo.

The Division continued its leadership role in the Metro-Drug Task Force and enjoyed several significant and successful prosecutions.

By efficiently using available funds and actively maintaining an effective liaison with agencies that provide funding in the form of grants, we were able to implement the Community Oriented Drug Emphasis (CODE) operation, Police and Community Together (PACT) program, and significantly enhanced the evidence collection and analysis capability of the Division by purchasing state of the art equipment for the Forensic Laboratory and Scientific Investigation Unit.

The Division obtained and implemented a tele-communications system which now provides enhanced service to hearing impaired citizens.

We established professional services awards for our civilian employees, and implemented a program that will further enhance the recognition of outstanding service provided by sworn personnel.

Our ability to maintain the quality and number of services provided to this community, notwithstanding personnel shortages and budgetary constraints, serves as a testimony to the dedication of Division personnel.

Respectfully submitted,

Marti D. Felker
Chief of Police

LAW ENFORCEMENT CODE OF ETHICS

As a law enforcement officer, my fundamental duty is to serve mankind; to safeguard lives and property; to protect the innocent against deception; the weak against oppression or intimidation, and the peaceful against violence or disorder; and to respect the constitutional rights of all persons to liberty, equality, and justice.

I will keep my private life unsullied as an example to all; maintain courageous calm in the face of danger, scorn or ridicule; develop self-restraint; and be constantly mindful of the welfare of others. Honest in thought and deed in both my personal and official life, I will be exemplary in obeying the laws of the land and regulations of my department. Whatever I see or hear of a confidential nature or that is confided to me in my official capacity will be kept ever secret unless revelation is necessary in the performance of my duty.

I will never act officiously or permit personal feelings, prejudices, animosities or friendship to influence my decisions. With no compromise for crime and with relentless prosecution of criminals, I will enforce the law courteously and appropriately without fear or favor, malice or ill will, never employing unnecessary force or violence and never accepting gratuities. I recognize the badge of my office as a symbol of public faith, and I accept it as a public trust to be held so long as I am true to the ethics of the Police Service. I will constantly strive to achieve these objectives and ideals, dedicating myself before God and my chosen profession - Law Enforcement.

TOLEDO CITY GOVERNMENT

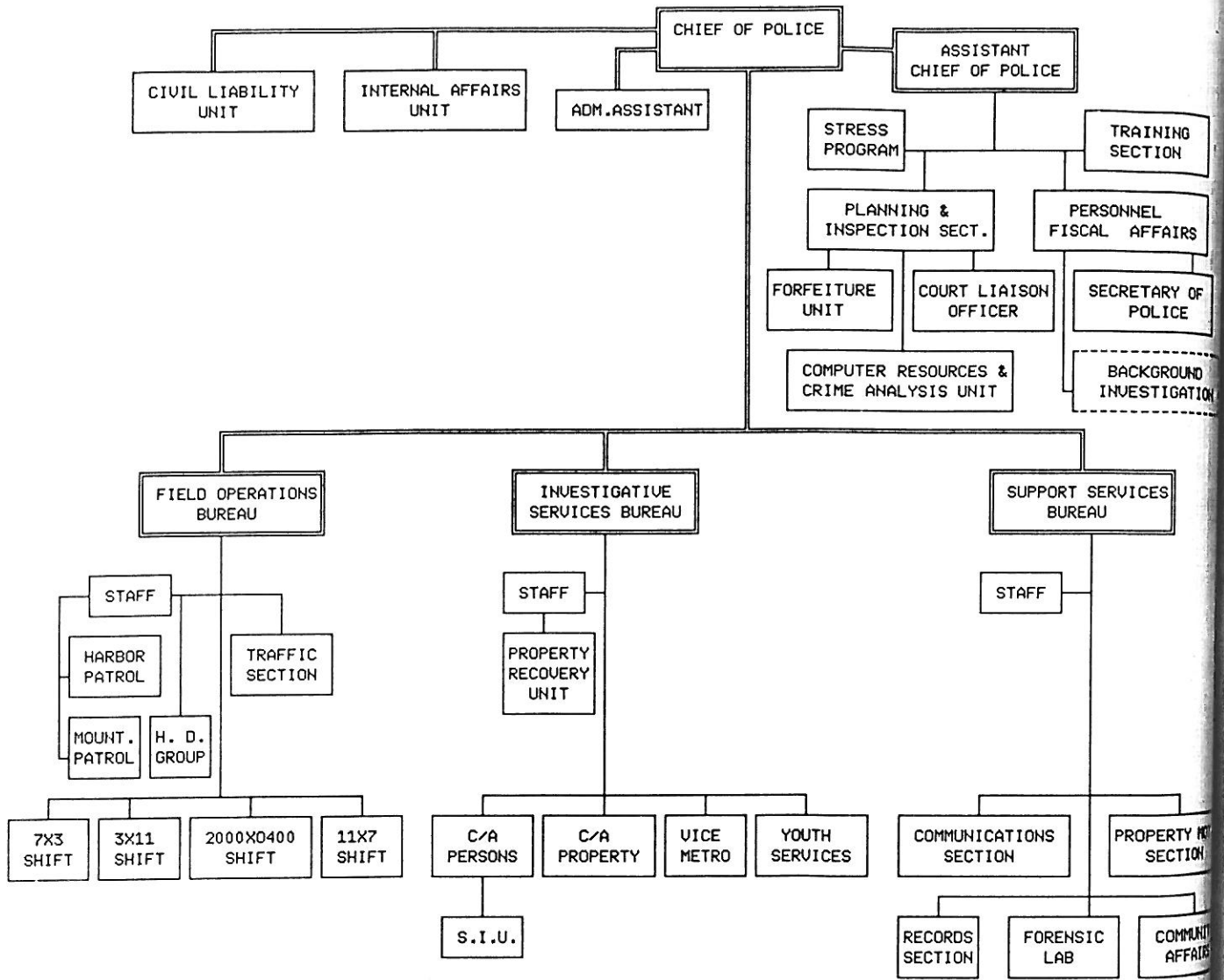
Toledo, Ohio's fourth largest city and the nation's 45th largest, is the seat of Lucas County. Located on the western shore of Lake Erie, it is the major trading center for 14 counties in Northwestern Ohio and Southeastern Michigan. Its 342,400 residents live in an 86 square mile area. Known as the "*Glass Capitol of the World*," and the home of the famous "*Jeep*" vehicles, Toledo is one of the nation's most important distribution centers.

Toledo operates under a *Council-Manager* form of government. The nine member City Council is comprised of eight *at-large* members and the Mayor, who is elected directly by voters. The City Manager is the administrative head of city government, and discharges the directives of Council.

The Toledo Police Division functions under the administrative control of the Chief of Police, and is within the Department of Public Safety, whose chief executive officer is the Director of Public Safety. The Division motto is:

TO PROTECT AND SERVE

TOLEDO POLICE DIVISION
ORGANIZATIONAL CHART
 (DEC 1990)



ITEMS OF INTEREST

HISTORY OF THE TOLEDO POLICE DIVISION

1836

The City of Toledo was incorporated by an act of the State Legislature.

1837

The first City Charter was adopted. Calvin Comstock was appointed as the first City Marshal. Prior to that, justice was administered by the Justice of the Peace and his constables.

1840-1850

The population of the City rose from 1220 to 3827.

1852

A volunteer police force was authorized by the City Council with the same police powers as the City Marshal.

1853

By Council Resolution, the *"night watch"* was initiated with a watchman for each of the four wards to patrol only during the night. The mayor had the right to appoint and regulate as he deemed necessary, with the advice of Council. The City Marshal was designated as the Captain of the Night Watch.

1865

The City Marshal was made a part of the Police Board. City Council Resolution stated, "If the Police Board shall deem it necessary at anytime, they may detail one or more of the police of the city to serve as Day Patrolman." This was the first time authorization had been given for a daytime police officer.

1867

Because of the increase in population (20,000), Toledo advanced to a City of the First Class in grade, and was invested with a local municipal government, including a Metropolitan Police Force. The Clerk of Council was instructed to begin paying salaries to police officers. Previously, any pay which the police had collected was through private contributions. Needless to say, those who contributed the most were accustomed to receiving the most protection. Thus, the City Marshal and the volunteer police force was deposed. Three Police Commissioners were selected. Henry Breed was named Captain (*Chief*) of Police, and thirteen policemen were hired, as well as a Sergeant and Turnkey. Each patrolman was paid \$720 annually. The total annual budget was \$21,980, which included equipment maintenance, all salaries, and the upkeep of the prisoners in the City Jail. Patrolmen were assigned to work fourteen hours on the Day Shift, and ten hours on the night shift, seven days a week.

The first Detective, Elijah Hanks, was officially appointed. The Chain Gang was abolished in Toledo, and the first In-Service Training was offered. The training, which involved the reading of the Department Rules and Regulations, was conducted at least once a week by the Captain.

1869

Henry Nellis, who was found sleeping on duty, became the first officer to be fired from the Toledo Police Force.

1871

Two *Sanitary Police* were appointed. Their duties consisted on fumigating homes where needed, and enforcing quarantines.

1874

By City Ordinance, the title of *Superintendent of Police* was changed to *Chief of Police*. The work hours for the officers was shortened to approximately 12 hours for the day shift, and 10 hours for the night shift. The rank of *Roundsman* was established with the duty of going to each District Beat and making sure that the assigned beatman was there, and to collect any information the beatman may have. This was the only means of communication between headquarters and the street officer.

1879

The limited use of photographs was initiated for criminal identifications.

1880

The First Metropolitan Board was instituted, with the local board members selected by the Governor. Subsequently, the members were elected by the public for four year terms.

The rank of *Detective* was permanently established by the Board of Police Commissioners. The City allowed for the appointment of a maximum of ten officers to the rank of Detective. William Scott became the first Chief of Police under the Metropolitan System.

1882

The City adopted the *Bertillion System* of measurements, as well as the *Scar and Mark System* for criminal identification. The Bertillion System involved the measuring of almost every part of the body, including the circumference of the head, the total span of the arms, etc. The Scar and Mark System involved the detailed listing of any scar or mark on a prisoner's body.

1883

The first patrol wagon (*horse and buggy*) was purchased to be used for the transportation of prisoners. Previously, all prisoners had to be walked to the station for booking, which often became a problem dealing with highly intoxicated persons. One industrious officer solved this problem by borrowing a wheelbarrow for these situations.

1890

The City began to install over 100 alarm boxes in various neighborhoods through which the beat officers could be summoned.

1898

A police substation was opened at 612 Lagrange Street. Headquarters remained located at 20 North Superior Street.

1899

The City's population increased to 115,674, necessitating the assignment of an officer to traffic duty at the Summit and Cherry Streets intersection.

1900

Toledo now encompassed 28 square miles and employed 100 patrolmen, 11 command officers, and three detectives. The City had two prisoner wagons; one at each station.

1903

With the increased use of photographs, the Police Department established a *Rogues Gallery*, and began to do away with the Bertillion System of Identification.

1905

The use of fingerprinting was adopted for identification purposes.

1907

The City purchased its first motorcycles for use by officers. At first, they were used only for emergency reasons. Reports indicated that two detectives, assigned to nights, were dispatched to the scene of a burglary-in-progress on their motorcycles. After apprehending the burglars, they did not wish to waste time waiting for the horse and buggy wagon, so they drove the prisoners back to the station on the handlebars of the motorcycles, at speeds up to 50mph.

1908

The Toledo Police Department adopted a mounted horse unit. Each officer assigned to the Mounted Unit was required to care for his horse, which included feeding, cleaning, and grooming. The Mounted Unit remained operational until 1928.

1911

The Police Department added a full Motorcycle Squad, consisting of 20 officers.

1919

The position of *Turnkey* was filled with a sworn police officer, rather than a civilian. The first Police Woman was assigned with the duty of watching dance halls and other places of public amusement, as well as handling certain cases involving women. The remainder of her time was spent on patrol.

1924

The Toledo Police Pistol Range was dedicated. The range was built by members of the Department and was reported to be one of the finest ranges in the Country, if not the World. It was estimated at the time to have been worth \$100,000 however, the total construction cost was a mere \$5.60. Most of the materials were donated, and the labor was performed by the officers themselves.

1925

The Police Department moved from the 80 year old structure on Superior Street to the newly built, *Safety Building* at 525 North Erie Street, where the Division is currently housed.

1926

The *Women's Bureau* was formed to handle cases of missing girls and women, and any other cases involving females. Sergeant Margaret Slater headed the Unit for 29 years. Harold Towe, a professor at the University of Toledo, wrote in his history of the police department, "*It must be said that the Women's Bureau has, from its inception, been an honest to goodness police unit, making its own investigations, check-ups, and arrests. They have been Police Officers, not social workers.*"

Harry Jennings, Chief of Police, instituted the concept of probation in the courts by establishing the *Reclaiming and Probation Division* within the Police Department. Police Officers assigned to the Division, first interviewed offenders prior to their court appearance, after which a recommendation was made to the Court. If the offender was released, the officer worked closely with him for approximately six months.

1928

The memorial monument for police officers killed in the line of duty was dedicated. It was said to be the only memorial in the Country conceived and built by police officers, and was regarded as a fine work of art and architecture.

1930

The Department inaugurated radio communications with the installation of two way radios in all police vehicles. It began broadcasting on station *WRDQ*.

1932

The first police school was instituted with private, qualified citizens donating their time and expertise. The first class lasted eight weeks. The Identification Bureau, which previously was operational only during the day shift, began remaining open during evening hours.

1934

With the establishment of a school for traffic violators, whose instructors were police officers, a judge now had the options of ordering traffic violators to attend the school to improve their basic driving skills.

1937

The *Crime Laboratory* was established. Limited scientific and chemical analyses were previously conducted at the University of Toledo.

With the establishment of the *Juvenile Bureau*, the Division began expanding its responsibilities into the realm of prevention, which was consistent with the changing concept of law enforcement.

An *Accident Investigation Squad* was also established in this year. There were 900 automobile accidents in the City during 1937.

1938

The *Toledo Police Academy* was initiated and graduated its first class.

1940

Nine policemen began flight training to become *Policemen of the Air*, as soon as the Department received its first airplane.

1948

McCarthy Stadium in Highland Park was dedicated to Lt. John McCarthy, who was killed in the line of duty on January 7, 1947. His name, along with the 21 officers who predeceased him, were commemorated on a plaque at the Stadium.

1949

Radar was adopted by the Department for use in traffic enforcement.

1952

A Police Library was begun, under the guidance of Inspector Roth of the Police Academy.

A *Harbor Patrol Unit* became operational on a part time basis, with a borrowed boat.

1953

Due to a high injury rate, the two-wheel Motorcycle Squad was abolished.

1955

The City was given a retired U.S. Coast Guard boat to enforce the water law in the Toledo area. This was the beginning of the beginning of a full-time Harbor Patrol.

1958

The police work week was reduced from 48 to 44 hours, which remained in effect until 1960, when it was reduced to a 40 hour work week.

1960

The uniform was modified by adding shoulder patches and changing from the traditional eight point, blue hat to a white trimmed hat.

1963

Due to major annexation in the metropolitan area, police patrol responsibility increased to 76.8 square miles, and the population increased to over 370,000 residents. In less than two years, the City had grown over 19 square miles. The police budget was \$3.3 million.

1964

Patrol districts were reorganized from 17 basic beats to 20. In addition, the Police Division initiated an 8:00pm - 4:00am *Selective Enforcement* shift to supplement district patrol units.

The *Police Auto Pound* discontinued operations, and a private garage was authorized to take over the storage of vehicle in police custody.

1966

The Division began using portable *Walkie-Talkie* radios, with a great deal of success.

1970

Officer William Miscannon was fatally shot at the corner of Junction and Dorr Streets on September 18.

1973

The first female was graduated from the Toledo Police Academy with the rank of *Patrolman*. The Division adopted the *One-Man Patrol Unit* concept.

1974

Air-conditioning was placed into marked police vehicle for the first time.

1976

The *Scott Park District Station* was opened, thus becoming the first substation since 1925.

1977

The Division closed the men's and women's jail facilities in the Safety Building, and began booking prisoners at the newly built, Lucas County Corrections Center. This ended a 140 year era, which began in 1837, of the Police Division housing its own prisoners.

1980

All Field Operations and Investigative functions were removed from the Scott Park District Station, thereby returning the Division to a centralization of line operations. The Scott Park facility began housing the Community Relations and Crime Prevention Sections.

1982

Due to severe fiscal problems facing the City, nearly all civilian police employees were laid off. Many returned to their jobs later in the year after the passage of a payroll income tax.

1984

Due to increased resources resulting from economic growth and increased municipal tax revenues, the Division restored all services to the public. Manpower was brought up to its authorized strength of 725; the first time since 1978. The Police Academy graduated the largest class in its history -- 121.

Beat patrol officers returned to the revitalized downtown area; particularly Portside, the downtown marketplace.

1985

City Council approved an increase in the Division's authorized strength of 25 officers, thereby raising the strength to 750; the highest strength since 1977, when it was reduced to 725. The Division's records keeping responsibility was computerized. Redistricting took place, doing away with the basic 22 districts and replacing them with a flexibeat system, consisting of 7 primary sectors with numerous beats within each. The traditional 2 or 3 digit call numbers were replaced with a number-letter combination, such as 3-D-14.

Chief John Mason authorized the implementation of a Mounted Patrol Unit in March 1986. Two Sergeants and nine Patrol Officers were selected to undergo training at the Detroit Mounted Police Stables.

1986

The *Mounted Patrol Unit* began operation on March 3, 1986, and instantly became a success with the public. The officers in the unit are the first horse-back officers in Toledo since 1928.

1987

On August 26th, Marti D. Felker was appointed Chief of Police, succeeding John Mason, who retired in June.

1988

In January, the *Forfeiture Unit*, whose primary responsibility is to institute civil forfeiture proceedings against individuals who use or derive personal assets during the course of criminal conduct, became fully operational.

The Mounted Patrol Unit established its stable facility in the building at 1820 N. 12th; site of the former Sealtest Dairy garage.

On January 18th the Division returned to the blue hat as part of the official uniform.

1989

On March 21st City Council raised the Division's authorized strength from 750 to 775.

In October, the Division began the first phase of its transition from the traditionally issued 38 caliber revolver to the 9mm automatic pistol. Vice-Metro and Directed Patrol Officers were the first to receive the week long training in the use of the weapon. Complete transition to the 9mm pistol is expected to occur by February 1991.

1990

The Division's completely automated, indoor range was dedicated on September 26, 1990.

The forty-fourth academy class was sworn in on December 14, 1990.

POLICE CHIEFS - PAST AND PRESENT

HENRY BREED	1867 - 1868
WILLIAM P. SCOTT	1868 - 1871
JOSEPH A. PARKER	1879 - 1881
JOSIAH C. PURDY	1872 - 1879 1883 - 1885
EGBERT E. MORSE	1881 - 1882
GENERAL JAMES BLAIR STEEDMAN	1882 - 1883
EDWARD O'DWYER	1885 - 1892
BENJAMIN F. RAITZ	1892 - 1902
PERRY D. KNAPP	1902 - 1914
GEORGE A. MURPHY	1914 - 1915
HENRY J. HERBERT	1915 - 1922
HARRY JENNINGS	1922 - 1928
LOUIS J. HAAS	1928 - 1932 1932 - 1933
WILLIAM D. DELEHANTY	FEB. 1932 MAR. 1932
DANIEL T. WOLFE	1933 - 1936
RAY E. ALLEN SR.	1936 - 1956
ANTHONY A. BOSCH	1956 - 1970
ROBERT J. DUCK	1970 - 1974
CORRIN J. McGRATH	1974 - 1978
WALTER SCOBLE	1978 - 1980
JOHN W. MASON	1980 - 1987
MARTI D. FELKER	1987 - PRESENT

OFFICERS KILLED IN THE LINE OF DUTY

Officer John Hassett - March 5, 1880

* *Killed by falling debris during tornado.*

Officer Charles Russell - October 9, 1906

* *Shot by unknown suspect - details unknown.*

Sergeant James Boyle - May 5, 1908

* *Shot at Lafayette and Erie Streets by a burglary suspect.*

Officer Harry Smith - September 25, 1911

* *Shot while responding to a burglary call near Monroe and Bancroft.*

Officer Albert Schultz - August 7, 1914

* *Shot on Englewood Court by a burglary suspect.*

Detective Kaiser Bartecki - January 21, 1915

* *Shot at 300 Kosciusko responding to a domestic dispute call.*

Officer Adolph Reimer - August 25, 1915

* *Shot at 300 Woodland during landlord/tenant dispute.*

Officer Louis Jaswiecki - March 31, 1918

* *Shot at unknown location by two robbery suspects.*

Officer William Bather - May 27, 1919

* *Shot at City Park and Curtis by robbery suspects.*

Officer George Zapf - September 23, 1919

* *Killed in a motorcycle accident at Superior and Madison.*

Officer Harry Dowell - June 9, 1921

* *Shot at 611 Walnut in a landlord/tenant dispute.*

Officer Harold Mossburger - June 9, 1921

* *Shot at 611 Walnut in a landlord/tenant dispute.*

Officer William H. Kress - August 1, 1921

* *Shot on Canton Avenue while questioning suspects.*

Officer Charles McGuire - December 22, 1921

* *Shot at Indiana and Division by an unknown suspect.*

Officer William A. Reed - December 28, 1921

* *Shot on Canton Avenue while questioning a suspect.*

OFFICERS KILLED IN THE LINE OF DUTY

Officer Fritz Bacon - August 13, 1922

* *Struck by motor vehicle at Front and Main Streets.*

Lieutenant William J. Martin - September 6, 1921

* *Shot at Fulton and Prescott by an auto theft suspect.*

Detective William Julert - January 29, 1924

* *Shot while disarming a suspect.*

Officer Walter Mullin - May 12, 1925

* *Shot while pursuing a prowler at Bennett and Clarence.*

Officer George Zientara - April 16, 1928

* *Shot at 2304 Upton by robbery suspects.*

Officer Edward O'Briest - May 19, 1931

* *Shot at 300 Moorish while working an undercover assignment.*

Officer Edward Keim - August 11, 1932

* *Shot at Indiana and Heston during a robbery/kidnapping.*

Officer Harvey O'Neil - November 8, 1936

* *Killed at Bancroft and Monroe Streets in a motorcycle accident.*

Officer Fred W. Disel - May 5, 1944

* *Killed at Adams and Erie Streets in a motorcycle accident.*

Detective Lt. John McCarthy - January 7, 1947

* *Shot at 600 Jackson while transporting prisoners.*

Officer Albert Fadell - November 18, 1948

* *Killed at Canton and Beacon Streets in a motorcycle accident.*

Officer Harold Stevens - July 3, 1948

* *Killed at Monroe and 17th Streets in an auto accident.*

Officer Walter Boyle - December 8, 1961

* *Shot while serving an arrest warrant on Walden Street.*

Officer Donald Brown - June 12, 1962

* *Shot on N. 14th Street during a domestic quarrel.*

Officer William Miscannon - September 18, 1970

* *Shot while sitting in a patrol wagon at Dorr and Junction Streets.*

1990 RETIREMENTS

<p>Captain Walter Abele Appointed 11-1-59 Retired 2-2-90</p>	<p>Det. Simon Mason Appointed 4-1-65 Retired 9-27-90</p>
<p>Det. William Adams Appointed 10-4-63 Retired 12-21-90</p>	<p>Sergeant Virgil Oliver Appointed 4-1-63 Retired 4-1-90</p>
<p>Officer Michael Babcock Appointed 9-9-83 Retired 12-28-90</p>	<p>Officer Clarence Orzechowski Appointed 10-1-65 Retired 8-1-90</p>
<p>Officer Kurt Bergman Appointed 4-1-66 Retired 9-27-90</p>	<p>Lieutenant Edwin Palinski Appointed 11-1-59 Retired 11-23-90</p>
<p>Officer Anthony Bill Appointed 9-1-67 Retired 7-27-90</p>	<p>Det. Steven Palmer Appointed 7-1-69 Retired 8-2-90</p>
<p>Officer Gary Campbell Appointed 4-1-68 Retired 6-8-90</p>	<p>Officer Paul Pawlak Appointed 7-1-60 Retired 12-21-90</p>
<p>Sergeant John Connors Appointed 4-1-65 Retired 5-30-90</p>	<p>Officer Joseph Rutkowski Appointed 10-4-63 Retired 7-19-90</p>
<p>Officer David Davidson Appointed 7-12-77 Retired 3-9-90</p>	<p>Sergeant Lawrence Schultz Appointed 10-1-65 Retired 10-26-90</p>
<p>Captain Larry Dyal Appointed 4-1-62 Retired 4-2-90</p>	<p>Det. Harold Shepard Appointed 4-1-65 Retired 4-26-90</p>
<p>Det. Richard Gels Appointed 4-1-68 Retired 12-10-90</p>	<p>Sergeant David Smith Appointed 3-31-73 Retired 6-11-90</p>
<p>Sergeant David Gray Appointed 4-1-63 Retired 7-24-90</p>	<p>Det. Paul Sontchi Appointed 5-15-64 Retired 12-21-90</p>
<p>Sergeant Thomas Grime Appointed 3-31-73 Retired 9-29-90</p>	<p>Lieutenant Harvey Soule Appointed 5-15-64 Retired 8-23-90</p>
<p>Captain Joseph Heer Appointed 11-1-59 Retired 9-27-90</p>	<p>Sergeant Frank Stiles Appointed 4-1-65 Retired 4-26-90</p>
<p>Sergeant Ulysses Howard Appointed 4-1-68 Retired 5-17-90</p>	<p>Det. Richard Studyvin Appointed 4-1-59 Retired 5-24-90</p>
<p>Officer John Koechley Appointed 4-1-63 Retired 4-5-90</p>	<p>Sergeant Joe Ward Appointed 10-4-63 Retired 4-2-90</p>
<p>Deputy Chief Richard Kwiatkowski Appointed 6-1-54 Retired 11-22-90</p>	<p>Officer Kevin Warner Appointed 9-9-83 Retired 4-26-90</p>
<p>Officer Larry Mallory Appointed 1-13-67 Retired 3-2-90</p>	<p>Det. Raymond Williams Appointed 4-1-63 Retired 11-5-90</p>
<p>Officer Edwin Marok Appointed 1-13-67 Retired 12-26-90</p>	<p>Officer Clarence Zeller Appointed 9-9-83 Retired 6-22-90</p>
<p>Det. Joseph Martin Appointed 5-16-57 Retired 3-29-90</p>	

DIVISION SERVICE AWARDS

MEDAL OF VALOR

...The Division's Highest Award
For Exceptional Bravery

Sergeant Donald Kenney
Officer Chris Baker

Officer Dennis Rankin
Sergeant Ronald Korsog

Officer James Donoher

DISTINGUISHED SERVICE AWARD

...The Division's Second Highest Award.
Awarded for Individual Acts of Heroism

Officer Michael Gilmore
Officer Kim Guardiola
Officer Robert Pitzen

MEDAL OF MERITORIOUS SERVICE

...For service beyond what is normally
expected of an Officer

Sergeant Daniel Schultz Jr.
Officer Robert Marzec
Detective Phillip Cashin
Sergeant Robert Case

PROFESSIONAL SERVICE AWARD

...For an Officer who has maintained a
continuous record of exceptional performance

Captain Joseph Heer
Captain Larry Dyal, Ret.
Lieutenant Timothy Borkowski
Sergeant Paul Kerschbaum
Officer Richard Gottfried
Detective Arthur Marx
Officer David McClellan

Detective Dennis Richardson
Officer William Rowan
Detective Walter Shaw
Officer Stephen Skeels
Detective Gerald Speelman
Officer Thomas Staff
Officer Norman Widman

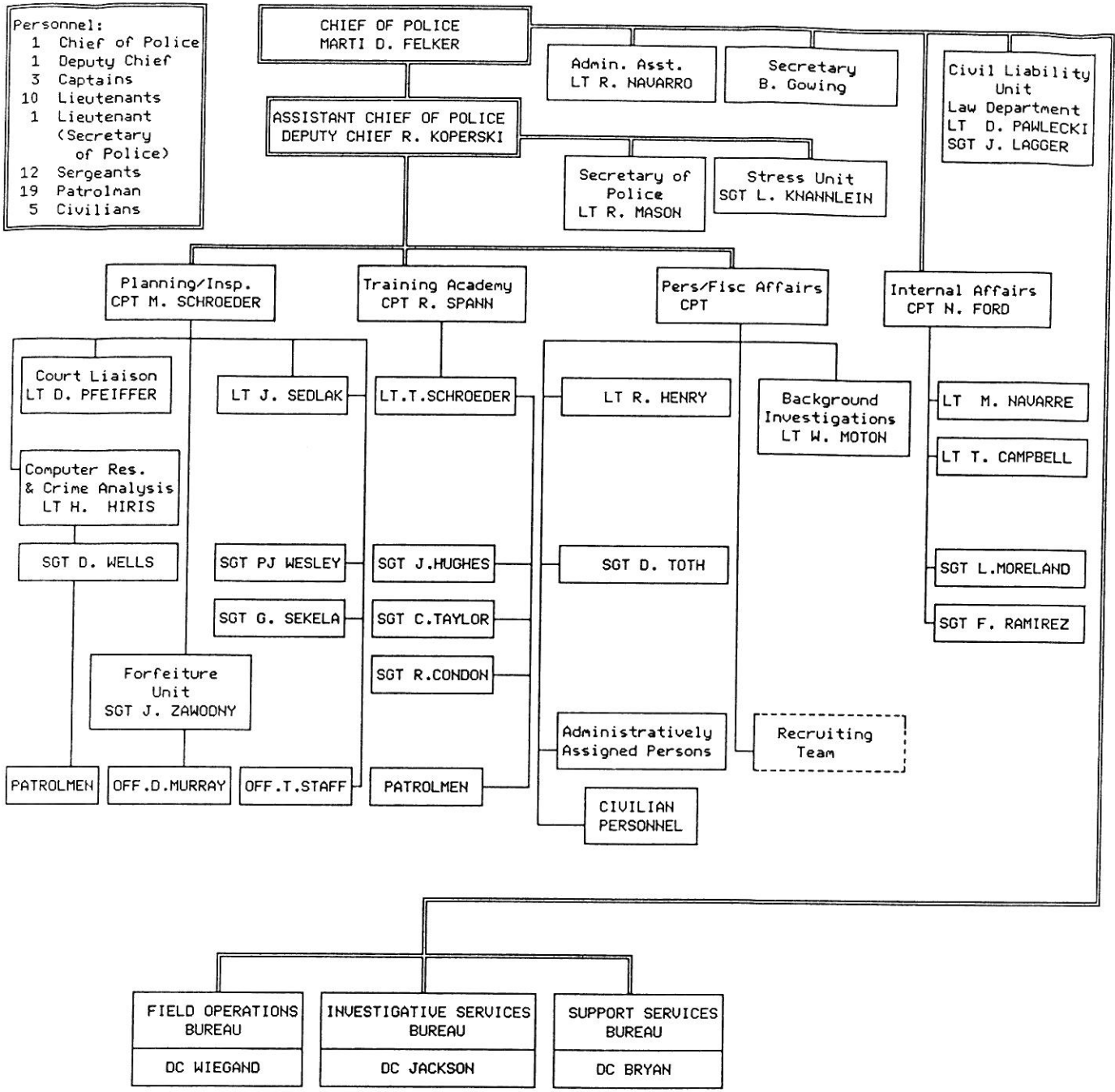
Civilian Personnel

Beverly Gowing - Secretary
Charlene Gray - Data Entry Supr.

P. J. Walker - Vehicle Service
John Weaver - Vehicle Service

POLICE ADMINISTRATION

ADMINISTRATION
(As of: DEC 1990)



ADMINISTRATIVE STAFF

ADMINISTRATIVE ASSISTANT

The Administrative Assistant to the Chief of Police has many responsibilities in representing the Office of the Chief. He represents the Chief at meetings and meets with neighborhood groups regarding specific problems in the community. In addition, he screens and responds to citizen complaints and inquiries which are directed to the Chief's Office, as well as those emanating from other city agencies, the Mayor's Office, the City Manager's Office, and individual councilmen. Other duties include serving as the Chairman of the Awards Committee, and coordination of the outside employment (*off duty*) requests made by all sworn personnel.

CIVIL LIABILITY INVESTIGATION UNIT

This Unit is the investigative arm of the Law Department; facilitating the adequate preparation of a complete and effective defense in civil cases filed against the City of Toledo. It provides the City with a means for an early and effective investigative involvement in tort liability matters, thus safeguarding and preserving information and evidence necessary in defending a lawsuit.

PLANNING and INSPECTIONS SECTION

As its name implies, this Section has dual responsibilities. First, it endeavors to develop a planning process that anticipates problems and suggests solutions. The Unit develops and recommends plans aimed at improving police services in the furtherance of the Division's goals. Its personnel review policies and procedures to ascertain suitability, and, where weaknesses exist, devise methods of improvement, along with formalizing written policies to guide employees in the effective administration of the Division.

The second area of responsibility is that of conducting formal staff inspections to determine if Division policies, procedures, and rules are being adhered to by all Division members. It also provides for the evaluation of systems and resources to insure their utilization to maximum efficiency within the guidelines established by Division policy. When deviation are discovered, their causes are sought and recommendations for corrective action are made. A final aspect of the Section's responsibilities is that of serving as liaison between the Division and the Municipal and Common Pleas Courts to solve problems which arise. The Court Unit reviews all pre-trials to prevent duplication of testimony; attends pre-trials to assure that only the necessary officers are summoned; and, monitors the courtrooms to assist and supervise those officers appearing in court.

FORFEITURE UNIT

The Unit's primary purpose is to institute civil forfeiture proceedings, in conjunction with the Lucas County Prosecutor's Office, against individuals who use or derive personal assets during the course of criminal conduct.

COMPUTER RESOURCES-CRIME ANALYSIS UNIT

The Crime Analysis Unit provides the Division with a comprehensive computer analysis of Part I and Part II criminal offenses. By gathering, analyzing, storing, and disseminating information to patrol units, the appropriate police action can be taken to reduce or eliminate specific criminal activities in problem areas.

STRESS PROGRAM

The Toledo Police Division's Stress Unit assists Division employees and other city employees, as well as their family members, in resolving or attempting to resolve alcohol, emotional, marital, or other problems that may be contributing to or causing declining employee job performance. In assessing problem situations with a client, the Stress Officer appropriately refers the individual to a suitable community resource for treatment. The Stress Officer also carefully screens, becomes familiar with, and maintains a working relationship with people working in many diverse community treatment programs in order to be able to make referrals. The Unit is also responsible for developing training programs for the same target population, aimed at such areas as life style management, stress management, marriage strengthening, alcoholism, and others.

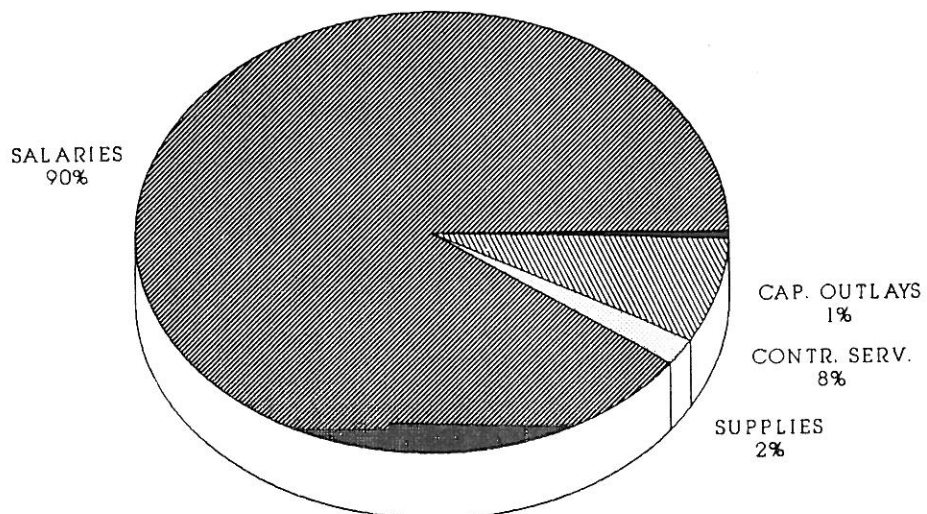
PERSONNEL and FISCAL AFFAIRS SECTION

This Section prepares and administers the Division's budget, as well as controlling and coordinating the purchasing of all equipment and supplies for the Division. It is responsible for the payroll function, personnel record keeping, affirmative action data, equal employment opportunity plans, and maintaining the Police Time Bank. It assists in the labor relations function, including contract negotiations, grievance response, grievance settlement, and arbitration. In addition, it is responsible for the recruitment and background investigation of new personnel.

1990 BUDGET SUMMARY

Budget Category	1990	1989
<i>Salaries and Personnel Services</i>	\$40,568,210	\$39,159,180
<i>Supplies</i>	920,160	795,270
<i>Contractual Services</i>	3,441,790	3,339,330
<i>Capital Outlays</i>	275,000	450,000
<i>Total</i>	\$45,205,160	\$43,803,780

1990 BUDGET CATEGORY PERCENT OF BUDGET



TRAINING SECTION

The Training Section manages and maintains the Division's training facilities and equipment, as well as all training records and files. It has the responsibility to research, develop, coordinate, and produce skills and career development training programs for all levels of Division Personnel. It serves as the liaison between the Division and the Ohio Peace Officer's Training Council. The Training Section functions as the Division's focal point for the training of newly sworn personnel.

SUBJECT MATTER	ATTENDEES	TRAINING TIME
44th Toledo Police Recruit Class <i>* Began training December 14, 1990</i>	40	22 Weeks
PR-24 Instructor's Training Course	42	7 Days
Accident Investigation Course	25	6 Days
Cardiopulmonary Resuscitation Course	All Division Personnel	18 Days
Semi-Automatic Pistol Training	292	55 Days
Semi-Automatic Tactical Training	80	4 Days
Defensive Driver's Course	63	9 Days
Annual Firearms Qualifications	All Division Personnel (1 day block)	1 Day
Field Operations Refresher Course	6	10 Days

BACKGROUND INVESTIGATIONS

The Background Investigation Unit is charged with the responsibility of investigating the character and personal background of police applicants. The background investigation process, which includes both medical and psychological examinations, delves into an applicants criminal and traffic history, military and credit history, previous employer records, neighbor interviews, and reference records. The Toledo Police Division's background investigation process has been described as one of the most thorough in the State of Ohio.

INTERNAL AFFAIRS SECTION

The Internal Affairs Section investigates, coordinates and/or exercises staff supervision on behalf of the Chief of Police with respect to complaints against, or allegations of misconduct against Division members. It has the responsibility of presenting all evidence obtained during such investigations, particularly when disciplinary hearings result from the investigations.

ADMINISTRATIVE COMPLAINTS	1990	1989	% +/-
<i>Internal Affairs Investigations</i>	60	69	-13.0%
<i>Investigations Outside of I.A.</i>	207	285	-27.4%
<i>Total</i>	267	354	-24.6%

CITIZEN COMPLAINTS	1990	1989	% +/-
<i>Internal Affairs Investigations</i>	97	80	21.3%
<i>Investigations Outside of I.A.</i>	66	124	-46.8%
<i>Total</i>	163	204	-20.1%

DIVISION TOTALS	1990	1989	% +/-
<i>Internal Affairs Investigations</i>	157	149	5.4%
<i>Investigations Outside of I.A.</i>	273	409	-33.3%
<i>Total</i>	430	558	-22.9%

DISCIPLINE and COUNSELLING	1990	1989	% +/-
<i>Counsellings</i>	92	139	-33.8%
<i>Verbal Reprimands</i>	100	137	-27.0%
<i>Written Reprimands</i>	33	69	-52.2%
<i>Suspensions</i>	14	28	-50.0%
<i>Terminations</i>	3	1	200.0%
<i>Total</i>	242	374	-35.3%

MANPOWER DISTRIBUTION

BY RACE-GENDER-RANK

As of December 31, 1990

	CHIEF	Dp. CHIEF	CAPT.	LIEUT.	SGT.	PTLM	TOTAL	% OF DIVISION
WM	1	3	13	27	74	357	475	68.2%
WF				1	5	57	63	9.1%
BM		1	1	4	14	66	86	12.4%
BF				1	1	35	37	5.3%
HM				1	3	25	29	4.2%
HF					1	4	5	0.7%
IF						1	1	0.1%
TOTAL	1	4	14	34	98	545	696	100.0%
% OF DIVISION	0.1%	0.6%	2.0%	4.9%	14.1%	78.3%	100.0%	

AVERAGE AGE - YEARS OF SERVICE - YEARS IN RANK - AGE AT APPOINTMENT

BY RANK

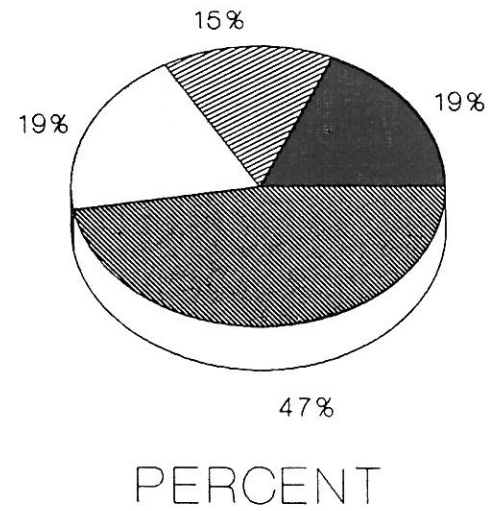
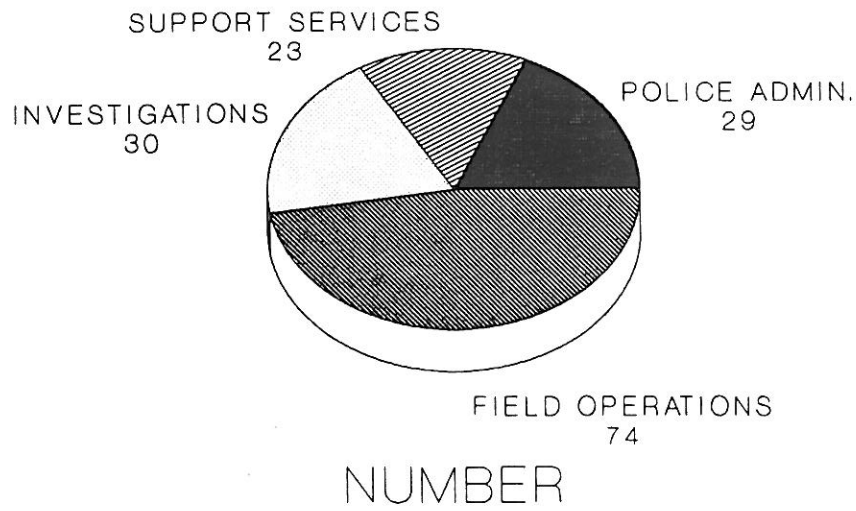
	AGE	YEARS OF SERVICE	YEARS IN RANK	AGE AT APPT
DIVISION	39.7	13.2	-	26.5
CHIEF	46.1	23.4	3.5	22.7
DEPUTY CHIEF	48.6	22.4	3.3	26.2
CAPTAIN	45.8	20.9	5.8	24.9
LIEUTENANT	43.2	19.0	5.7	24.1
SERGEANT	41.2	16.0	6.7	25.2
PATROL OFFICER	38.9	12.0	12.0	26.9

AGE AND LENGTH OF SERVICE

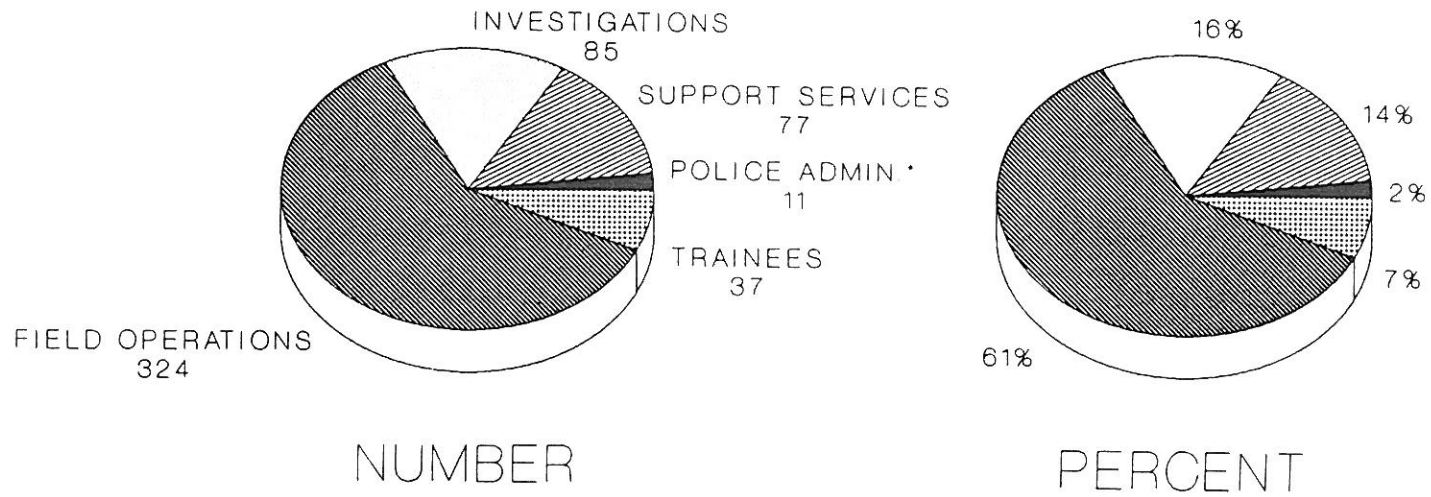
BY SECTION

	AGE		LENGTH OF SERVICE	
	AVERAGE	MEDIAN	AVERAGE	MEDIAN
FIELD OPERATIONS BUREAU				
Day Shift	43.4	44.6	17.6	18.3
Afternoon Shift	34.7	35.1	7.4	6.4
8pm-4am Shift	36.5	35.0	9.7	6.9
Night Shift	35.7	34.1	8.7	6.4
Traffic Section	48.1	49.6	23.5	25.9
INVESTIGATIVE SERVICES BUREAU				
Crimes Against Persons	44.8	45.5	20.1	21.6
Crimes Against Property	46.7	47.5	20.6	22.9
Vice-Metro	37.7	38.7	11.7	8.5
Youth Services	46.2	46.3	20.1	20.0
SUPPORT SERVICES BUREAU				
Communications Section	39.4	37.9	13.0	11.9
Records Section	42.4	42.8	16.0	16.2
Community Affairs	42.8	42.6	17.6	18.1
POLICE ADMINISTRATION				
	45.0	46.1	19.4	21.6

COMMAND OFFICER DISTRIBUTION BY BUREAU



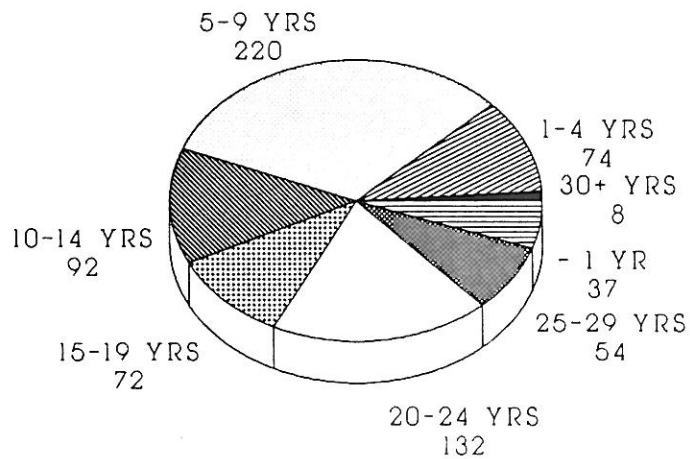
PATROL OFFICER DISTRIBUTION BY BUREAU



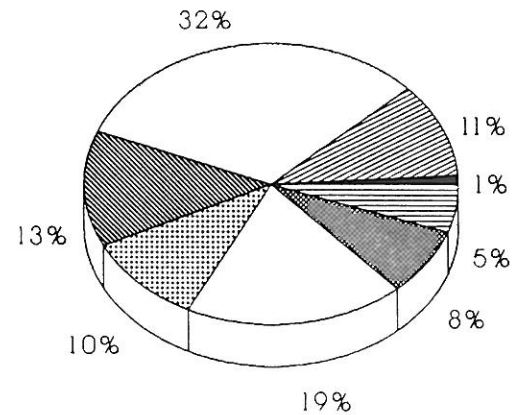
AS OF FEBRUARY 1991

YEARS OF SERVICE CATEGORIES

TOTAL DIVISION PERSONNEL



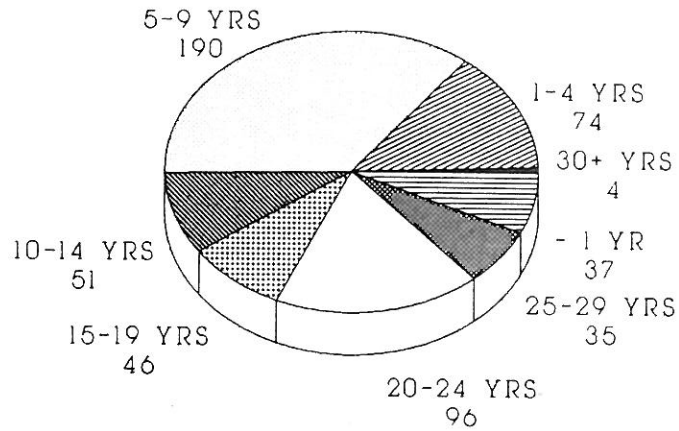
NUMBER



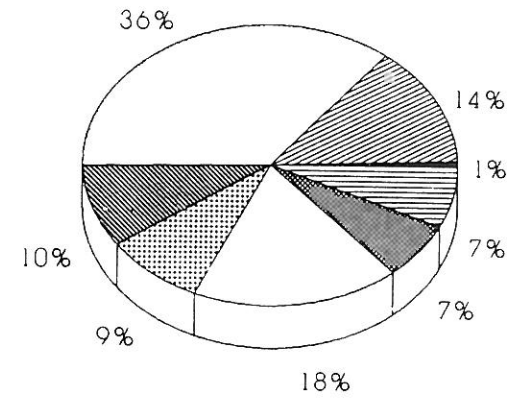
PERCENT

YEARS OF SERVICE CATEGORIES

PATROL OFFICERS



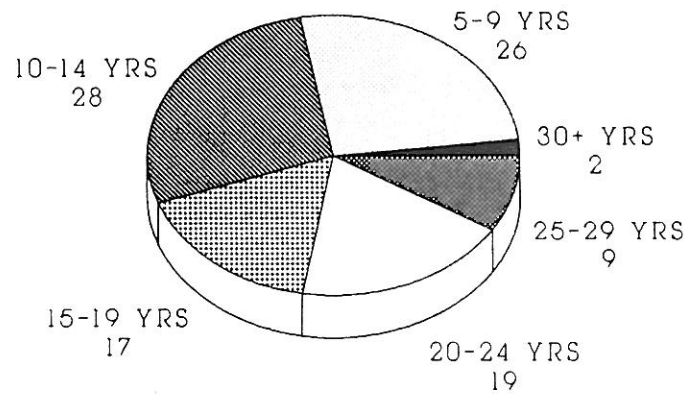
NUMBER



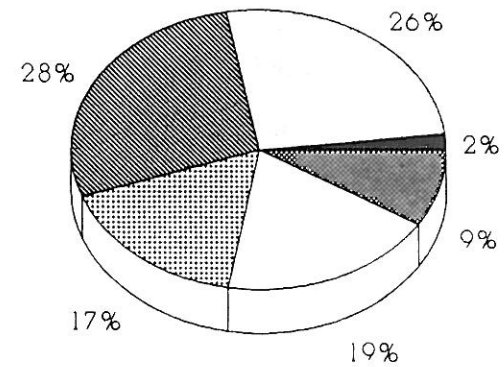
PERCENT

AS OF FEBRUARY 1991

YEARS OF SERVICE CATEGORIES SERGEANTS

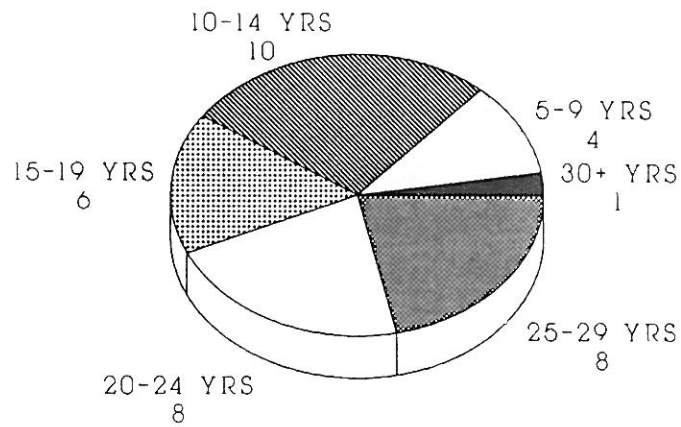


NUMBER

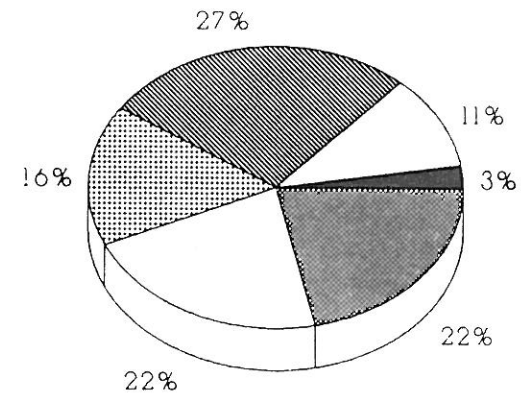


PERCENT

YEARS OF SERVICE CATEGORIES LIEUTENANTS



NUMBER

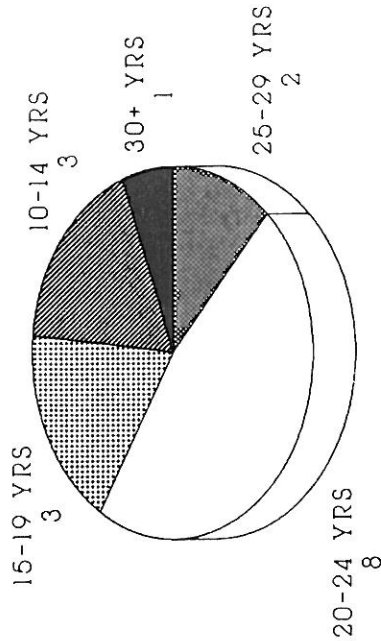


PERCENT

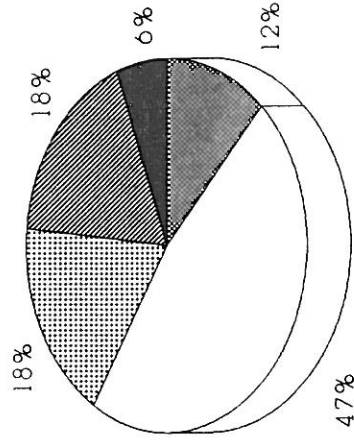
AS OF FEBRUARY 1991

YEARS OF SERVICE CATEGORIES

CAPTAINS and DEPUTY CHIEFS



NUMBER



PERCENT

As of December 31, 1990

CHIEF	DEPUTY CHIEF	CAPTAIN	LIEUTENANT	SERGEANT	PATROL OFFICERS	SEC. OF POLICE	LAB ADMINISTRATOR	CRIMINALIST	SYSTEMS ANALYST	DATA CLERK	STENO	CLERK	SECRETARY	VEHICLE SERV. WKFR.	TRAFFIC AIDE	CASHER	TOTAL SWORN	TOTAL CIVILIAN	TOTAL DIVISION
-------	--------------	---------	------------	----------	-----------------	----------------	-------------------	-------------	-----------------	------------	-------	-------	-----------	---------------------	--------------	--------	-------------	----------------	----------------

POLICE ADMINISTRATION

Division Commander	1																			
Assistant Chief		1											1					1	1	2
Administrative Ass't				1														1	0	1
Pers/Fiscal Affairs			0	1	1		1											1	0	1
Planning/Inspections			1	1	2	1						1	2					3	3	6
Forfeiture Unit					1	1												5	0	5
Court Liaison				1														2	0	2
Internal Affairs		1	2	2														1	0	1
Civil Liability Unit			1	1														5	0	5
Crime Analysis					1	3												2	0	2
Computer Resources				1					1									4	0	4
Training/Recruitment		1	1	3	1													1	1	2
Background Invest				1														6	0	6
Stress Officer					1													1	0	1
Sgt at Arms/Council						1												1	0	1
Assgn/Admin Purposes						1	6											1	0	1
Trainees							38											7	0	7
BUREAU TOTAL	1	1	3	10	13	51	1	0	0	1	0	1	2	1	0	0	0	80	5	85
% of Sworn/Civ. Pers	0%	0%	0%	1%	2%	7%	0%	0%	0%	0%	0%	0%	0%	0%	0%	0%	0%	11%	1%	12%

SUPPORT SERVICES BUREAU

Bureau Commander	1																				
Administrative Staff				1															1	0	1
Communications		1	1	6	32														1	0	1
Records Section		1	1	6	30					14		14							40	0	40
Property Management		1	0	1	5												2		38	28	66
Forensic Laboratory								1	1										7	2	9
Community Affairs		1	0	2	11														0	2	2
BUREAU TOTAL	0	1	4	2	16	78	0	1	1	0	14	0	14	0	2	0	0	101	32	133	
% of Sworn/Civ. Pers	0%	0%	1%	0%	2%	11%	0%	0%	0%	0%	2%	0%	2%	0%	0%	0%	0%	15%	5%	19%	

FIELD OPERATIONS BUREAU

Bureau Commander	1																					
Administrative Staff			1	1																1	0	1
Mounted Patrol					1	8														2	0	2
Harbor Patrol					1	3														9	0	9
Patrol Shift #4 7x3		1	6	12	90															4	0	4
Patrol Shift #5 3x11		1	4	12	96															109	0	109
Patrol Shift #8 8x4		0	1	5	29															113	0	113
Patrol Shift #6 11x7		1	3	12	88															35	0	35
Patrol Shift #8 12x8						8														104	0	104
Traffic Section			1	5	7							4			6	1				8	0	8
BUREAU TOTAL	0	1	3	16	49	329	0	0	0	0	0	0	4	0	6	1	0	398	11	409		
% of Sworn/Civ. Pers	0%	0%	0%	2%	7%	47%	0%	0%	0%	0%	0%	0%	1%	0%	0%	0%	0%	57%	2%	59%		

INVESTIGATIVE SERVICES BUREAU

Bureau Commander	1																						
Administrative Staff			1	1									2								1	0	1
Spl Investigations					1	5															2	2	4
Crimes / Persons		1	1	7	23																6	0	6
Crimes / Property		1	1	3	18																32	0	32
Youth Services		1	1	3	15																23	0	23
Vica/Metro		1	1	6	25							1									20	1	21
BUREAU TOTAL	0	1	4	5	20	87	0	0	0	0	0	0	3	0	0	0	0	117	3	120			
% of Sworn/Civ. Pers	0%	0%	1%	1%	3%	13%	0%	0%	0%	0%	0%	0%	0%	0%	0%	0%	0%	17%	0%	17%			

TOTAL DIVISION

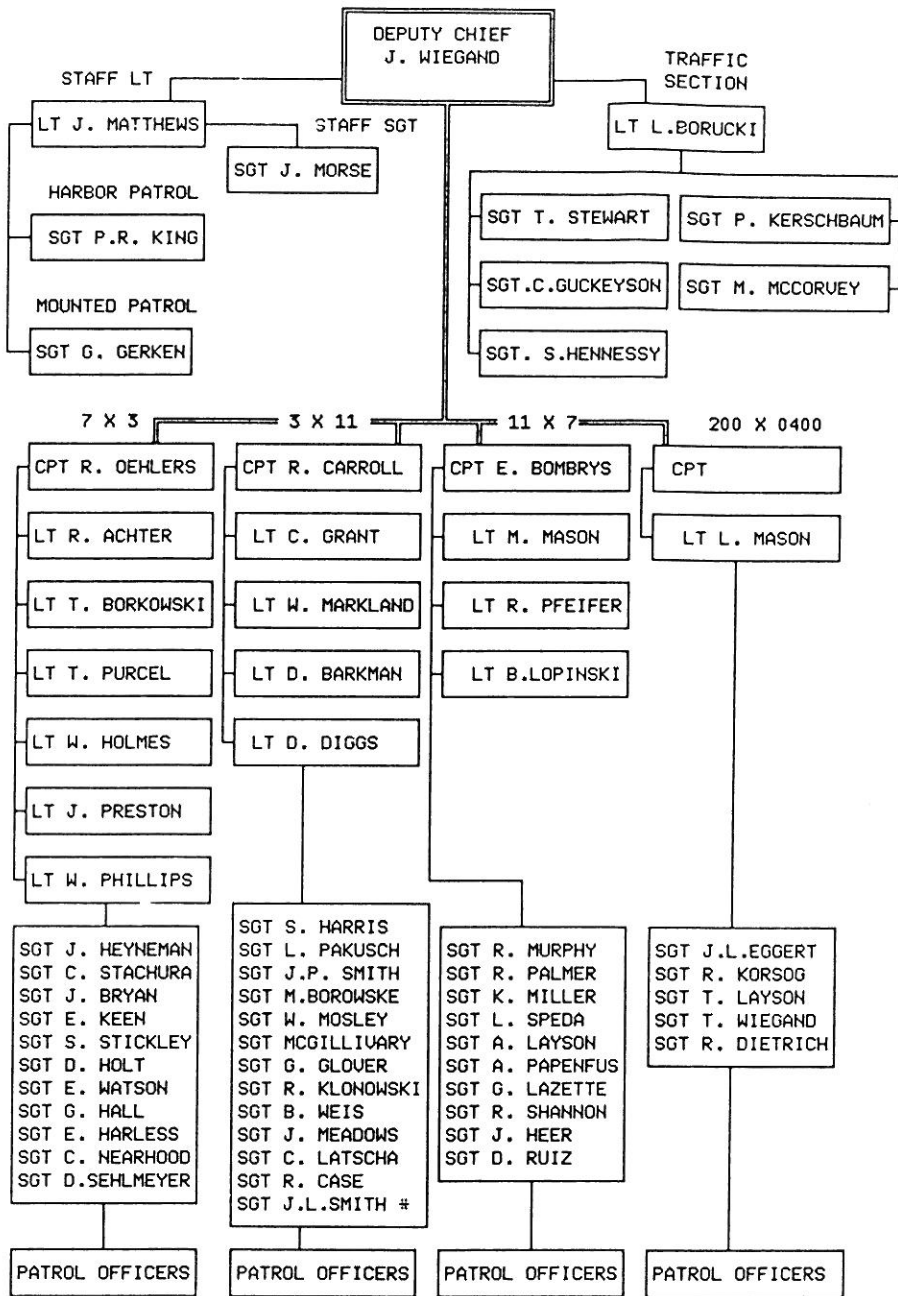
Number of each rank/position in the total Division	1	4	14	33	98	545	1	1	1	1	14	1	23	1	2	6	1	696	51	747
% each rank/position is of the total Division personnel	0%	1%	2%	4%	13%	73%	0%	0%	0%	0%	2%	0%	3%	0%	0%	1%	0%	93%	7%	100%

FIELD OPERATIONS BUREAU

FIELD OPERATIONS BUREAU
(As of: DEC 1990)

Personnel:
Deputy Chief= 1
Captain = 3
Lieutenant = 16
Sergeant = 50
Patrolmen:
Harbor Ptrl = 6
Mount Ptrl = 8
Traffic = 8
(0700x1500) = 85
(1200x2000) = 8
(1500x2300) = 102
(2000x0400) = 31
(2300x0700) = 88
CIVILIANS = 11

CODE PROGRAM



FIELD OPERATIONS BUREAU

PATROL SHIFTS

The uniformed patrol shifts are the nucleus of the Police Division. Through the assignment of four (4) shifts, officers respond to all appropriate calls for service originated by the public; both crime related and service related. This Section demands the greatest amount of personnel and the greatest amount of Division resources. More than fifty percent of all personnel within the Division are assigned to this extremely important function.

ADMINISTRATIVE STAFF

The Administrative Staff of the Field Operations Bureau performs all of the administrative functions associated with maintaining the Division's largest Bureau. Included within these responsibilities are: maintenance of assignment sheets, uniform clothes accounting, clothing purchasing authorization, equipment inspection, and many others.

HARBOR PATROL

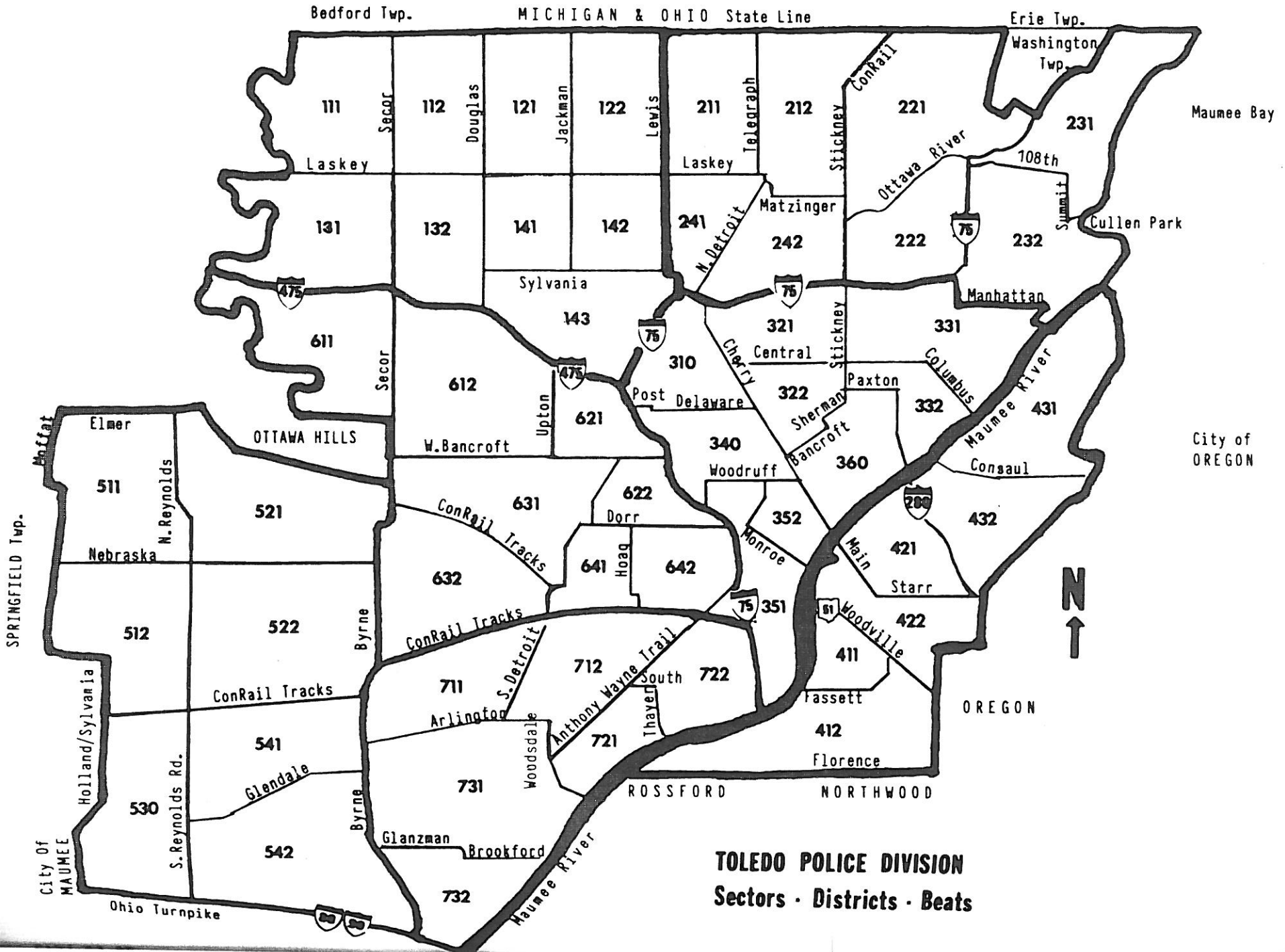
The Harbor Patrol Unit patrols all navigable waters within the jurisdiction of the City of Toledo. It performs such duties as are necessary for maintaining the safety of all persons and property in and along these waterways. The Unit coordinates and assists with search and rescue missions for lost or stranded persons on the waterways, as well as towing disabled water craft and removing hazards from the water when necessary. Other duties include: accident reporting, boat inspections, and assisting the Coast Guard, as well as other agencies, upon request. When the Harbor Patrol Team is not in the waters, members can be seen at area boat shows, seminars and various other places, informing the public as to the safe operation of watercraft.

TRAFFIC SECTION

The Traffic Section is the main repository of records for all traffic accidents and violations occurring in the City. It administers the School Crossing Guard program, parking meter enforcement and collection, the inspection of all Toledo taxi cabs, and the inspection of tow trucks. In order to keep the streets clear of junk autos, the Traffic Section also has the responsibility of enforcing ordinances related to junk and abandoned autos. It serves a support function for the Division by providing forms and data to be used in an on-going traffic enforcement - accident reduction program.

MOUNTED PATROL UNIT - ESTABLISHED 1985

The Mounted Patrol Unit patrols the various high volume business districts and the major parks of the City on as-needed basis. Its primary functions is patrolling in those areas where high visibility is required for deterrence, and where maneuverability is necessary to move through large crowds and heavy vehicular traffic. Its duties include traffic control and enforcement, nuisance and crime prevention, crowd control, search and rescue, and other activities which are better handled on horseback. The Unit also visits schools and assists at various community events.



TOLEDO POLICE DIVISION
Sectors · Districts · Beats

1990 MANPOWER DATA 8X4 SHIFT

BY MONTH OF YEAR

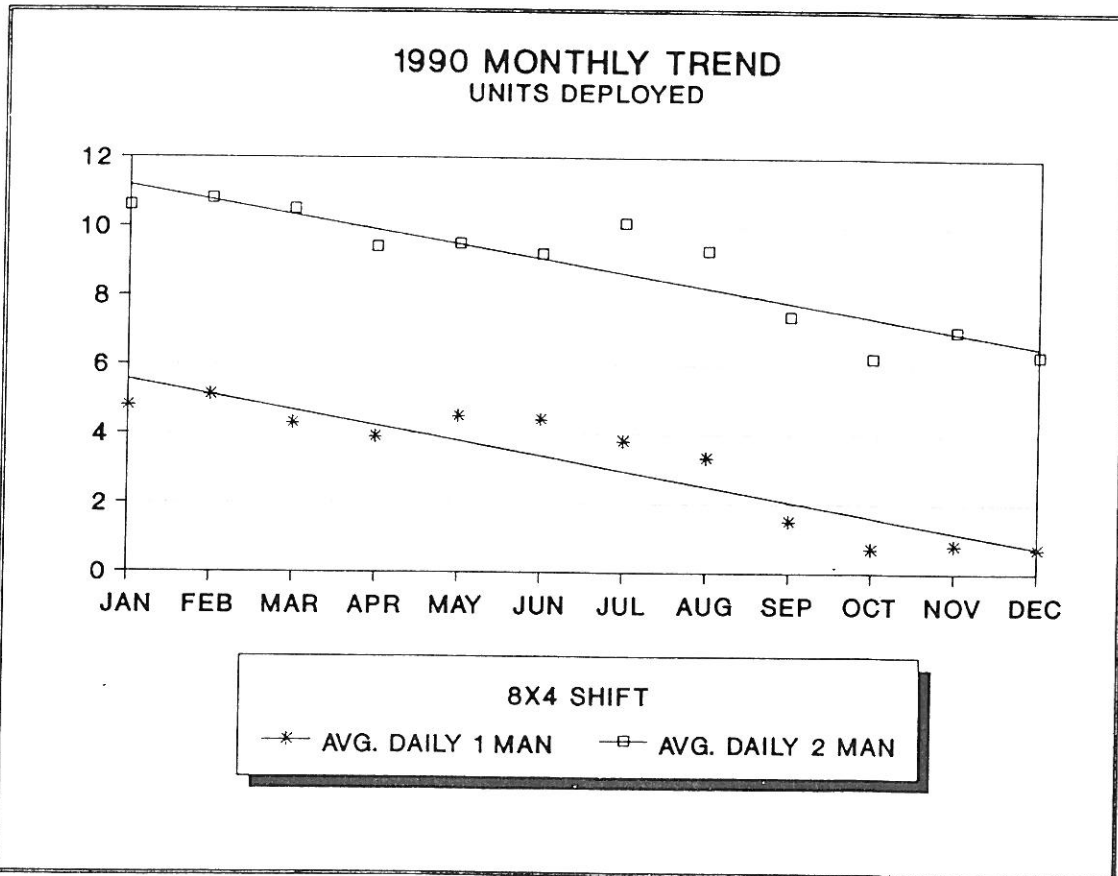
	JAN	FEB	MAR	APR	MAY	JUNE	JULY	AUG	SEPT	OCT	NOV	DEC
AVG. DAILY ONE MAN UNITS	4.8	5.1	4.3	3.9	4.5	4.4	3.8	3.3	1.5	0.7	0.8	0.7
AVG. DAILY TWO MAN UNITS	10.6	10.8	10.5	9.4	9.5	9.2	10.1	9.3	7.4	6.2	7	6.3
AVG. TOTAL UNITS PER DAY	15.5	15.9	14.8	13.2	14.1	13.6	13.9	12.6	8.9	6.9	7.8	7
AVG. DAILY EFFECTIVE STRENGTH *	26.1	26.6	25.3	22.6	24	24.7	25.9	23.8	16.2	13.1	14.8	13.3

BY DAY OF WEEK

	MON	TUE	WED	THUR	FRI	SAT	SUN
AVG. DAILY ONE MAN UNITS	3.5	3.4	3.2	3.1	3.1	2.8	2.9
AVG. DAILY TWO MAN UNITS	9	9.2	9.1	9	8.7	8.5	8.4
AVG. TOTAL UNITS PER DAY	12.6	12.6	12.3	12.1	11.7	11.3	11.3
AVG. DAILY EFFECTIVE STRENGTH *	22.1	22.3	22	21.7	20.9	20.2	20.1

* Effective Strength represents the actual number of officers on duty. The 8x4 Shift does not employ Directed Patrol Officers

** Allocation of manpower to the 8x4 shift was reduced by approximately 28% in September



1990 CALLS FOR SERVICE and MANPOWER DATA 7X3 SHIFT

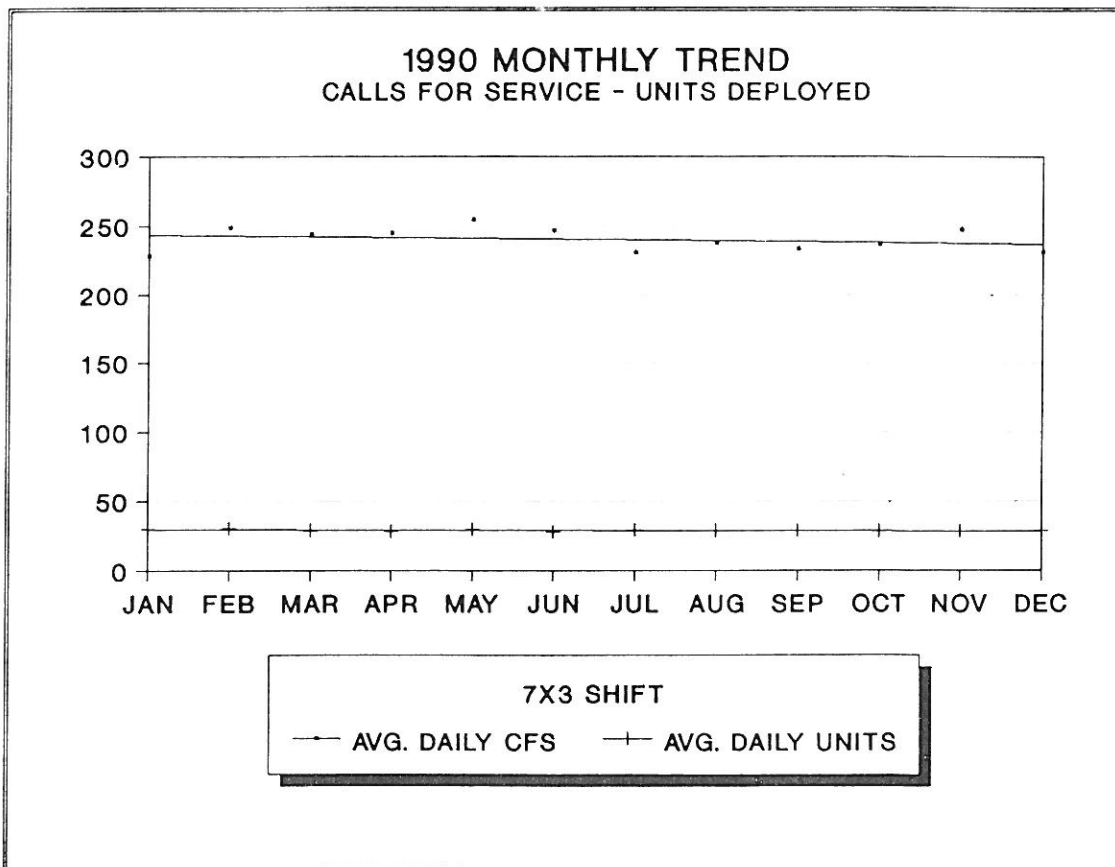
BY MONTH OF YEAR

	JAN	FEB	MAR	APR	MAY	JUNE	JULY	AUG	SEPT	OCT	NOV	DEC
TOTAL CALLS FOR SERVICE	7081	6965	7561	7353	7892	7400	7143	7355	7002	7335	7412	7168
AVG. DAILY CALLS FOR SERVICE	228.4	248.8	243.9	245.1	254.6	246.7	230.4	237.3	233.4	236.6	247.1	231.2
AVG. DAILY ONE MAN UNITS	15	15.6	14.1	13.9	14.5	12.7	14.1	14.1	14.2	14	13.7	14
AVG. DAILY TWO MAN UNITS	14.9	14.9	14.5	14.4	14.7	14.7	15	14.2	14.3	14.4	14.4	14.5
AVG. TOTAL UNITS PER DAY	29.8	30.6	28.5	28.3	29.3	27.5	29	28.4	28.5	28.3	28.1	28.5
AVG. DAILY DIRECTED PATROL	3.8	3.3	1.7	2.7	2.9	0.6	2.4	2.8	0.5	0.1	0.3	0.4
AVG. DAILY EFFECTIVE STRENGTH *	51.2	51.4	47.5	47.4	49.7	45.2	47	45.4	43.8	42.9	42.8	43.3

BY DAY OF WEEK

	MON	TUE	WED	THUR	FRI	SAT	SUN
AVG. DAILY CALLS FOR SERVICE	257.2	239.2	247.4	247.8	257.2	235.6	200.7
AVG. DAILY ONE MAN UNITS	14.5	14.5	14.3	14.3	14.2	14	13.4
AVG. DAILY TWO MAN UNITS	14.9	14.8	14.8	14.7	14.6	14.2	14
AVG. TOTAL UNITS PER DAY	29.5	29.3	29.1	28.9	28.8	28.2	27.4
AVG. DAILY DIRECTED PATROL	1.9	2.4	2.5	1.9	1.8	1	1.1
AVG. DAILY EFFECTIVE STRENGTH *	48	48.4	48.3	47.3	46.9	43.5	42.7

* Effective Strength represents the actual number of officers on duty, including Directed Patrol



1990 CALLS FOR SERVICE and MANPOWER DATA 3X11 SHIFT

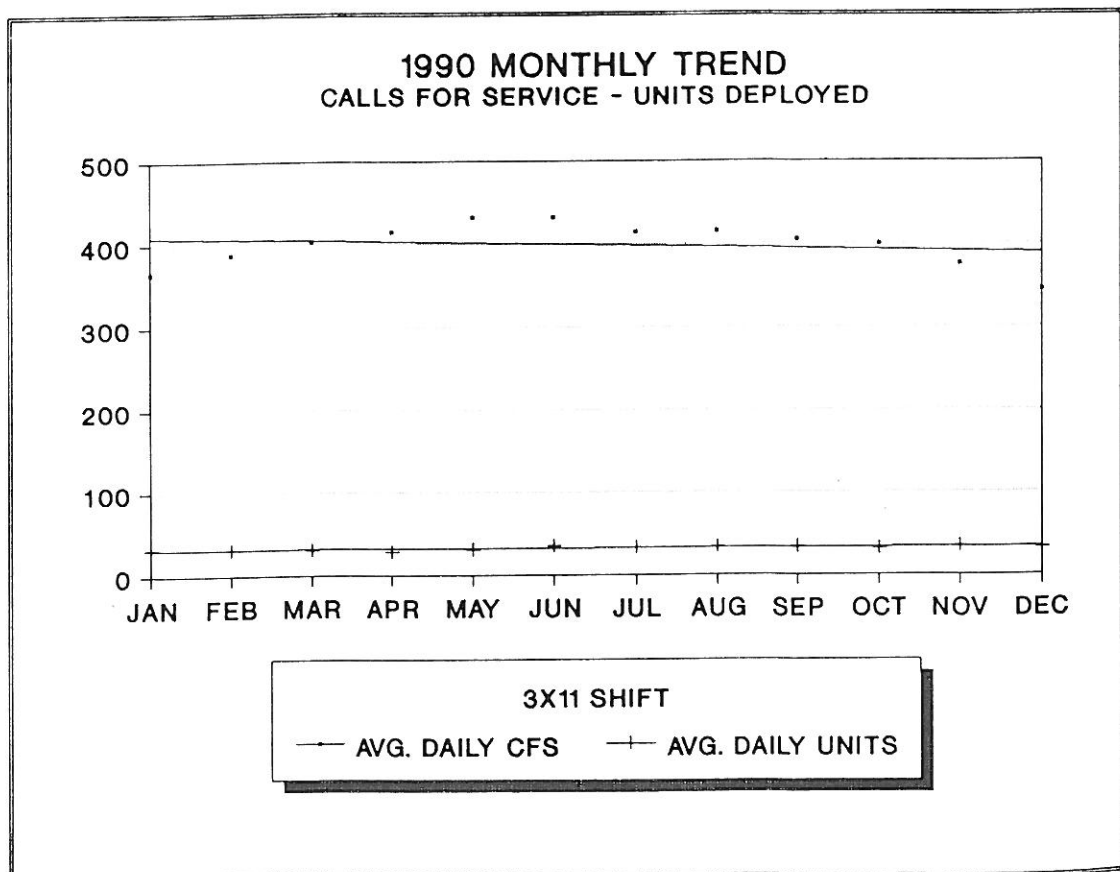
BY MONTH OF YEAR

	JAN	FEB	MAR	APR	MAY	JUNE	JULY	AUG	SEPT	OCT	NOV	DEC
TOTAL CALLS FOR SERVICE	11325	10856	12515	12444	13397	12969	12849	12871	12159	12392	11267	10659
AVG. DAILY CALLS FOR SERVICE	365.3	387.7	403.7	414.8	432.2	432.3	414.5	415.2	405.3	399.7	375.6	343.8
AVG. DAILY ONE MAN UNITS	14.3	13.9	13.3	12	12.5	15.6	14.8	15.4	14.7	13.4	15.4	13.9
AVG. DAILY TWO MAN UNITS	18	17.1	17.2	16.6	17.8	19.8	17.7	18	18.8	18.2	19.1	18.3
AVG. TOTAL UNITS PER DAY	32.3	31	30.5	28.6	30.4	35.4	32.6	33.5	33.5	31.6	34.5	32.2
AVG. DAILY DIRECTED PATROL	6	5.9	5.3	4.7	4.1	0	2.8	4.2	4.8	0.2	2.5	4.3
AVG. DAILY EFFECTIVE STRENGTH *	57.6	55.4	54.5	50.8	53.6	56.9	53.7	55.7	57	50.2	56.1	54.7

BY DAY OF WEEK

	MON	TUE	WED	THUR	FRI	SAT	SUN
AVG. DAILY CALLS FOR SERVICE	403.9	406.7	402.4	409.9	422.6	394.5	354.1
AVG. DAILY ONE MAN UNITS	14.4	14.6	14.1	15	14.1	14.1	12.5
AVG. DAILY TWO MAN UNITS	18.2	18	18.1	18.3	18	18	17.8
AVG. TOTAL UNITS PER DAY	32.5	32.6	32.3	33.3	32.1	32.1	30.3
AVG. DAILY DIRECTED PATROL	4.1	3.9	3.9	4	3.5	3.3	3.2
AVG. DAILY EFFECTIVE STRENGTH *	55.6	55.5	55.3	56.6	54.6	53.5	51.5

* Effective Strength represents the actual number of officers on duty, including Directed Patrol



1990 CALLS FOR SERVICE and MANPOWER DATA 11X7 SHIFT

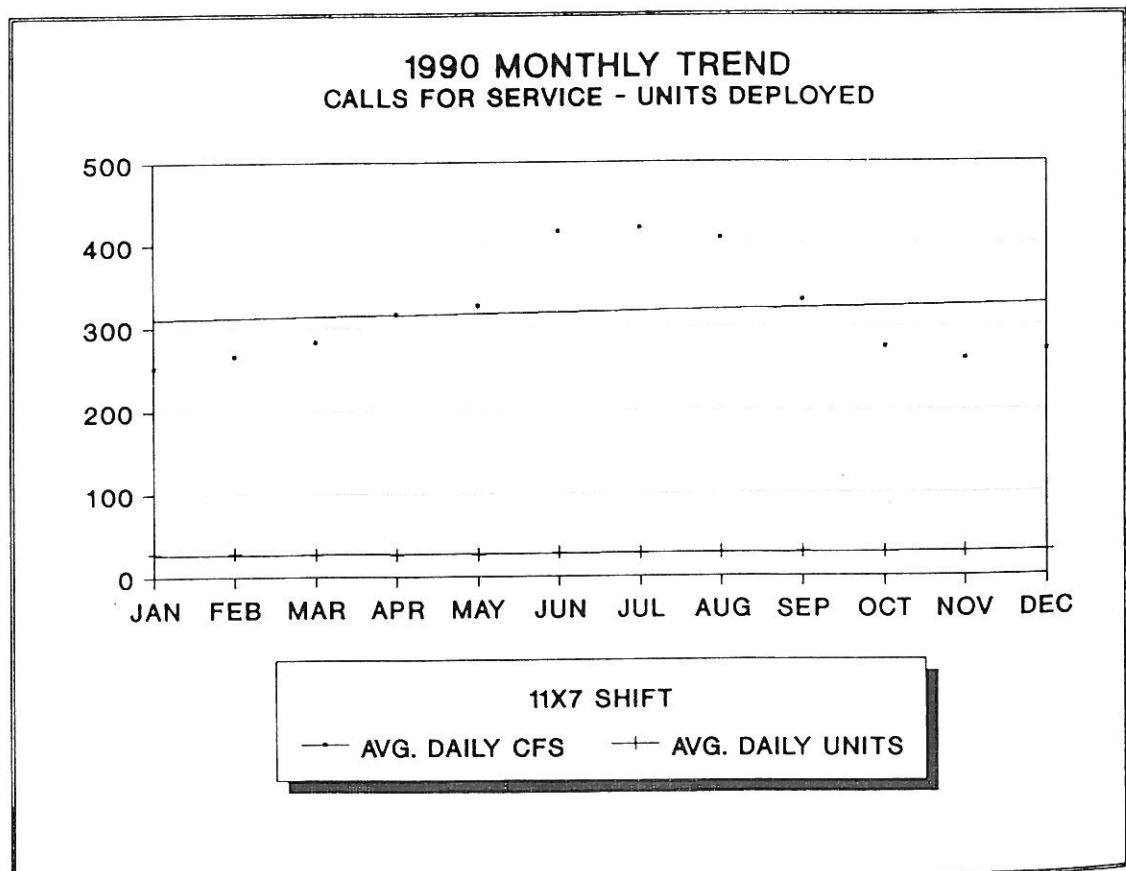
BY MONTH OF YEAR

	JAN	FEB	MAR	APR	MAY	JUNE	JULY	AUG	SEPT	OCT	NOV	DEC
TOTAL CALLS FOR SERVICE	7784	7423	8761	9470	10094	12470	12989	12635	9942	8517	7809	8385
AVG. DAILY CALLS FOR SERVICE	251.1	265.1	282.6	315.7	325.6	415.7	419	407.6	331.4	274.7	260.3	270.5
AVG. DAILY ONE MAN UNITS	12.7	12.2	11.3	10.6	11	11.9	11	11.8	11.8	11.8	12.3	12.2
AVG. DAILY TWO MAN UNITS	15.8	15.8	15.2	15	15.1	16.1	16.5	16.7	17	16.2	16.9	16.8
AVG. TOTAL UNITS PER DAY	28.6	28	26.5	25.6	26.1	28	27.5	28.5	28.8	28	29.2	28.8
AVG. DAILY DIRECTED PATROL	4.6	4	4.9	3.3	2.2	0.5	0.3	0.9	1.1	0.3	1.4	1
AVG. DAILY EFFECTIVE STRENGTH *	49	47.8	46.6	44	43.4	44.6	44.3	46.1	46.9	44.5	47.5	46.5

BY DAY OF WEEK

	MON	TUE	WED	THUR	FRI	SAT	SUN
AVG. DAILY CALLS FOR SERVICE	271.6	268.9	287	295.6	439.2	418.6	250.1
AVG. DAILY ONE MAN UNITS	11.8	11.8	11.8	11.7	11.8	11.6	11.6
AVG. DAILY TWO MAN UNITS	16.2	16.1	16	16.3	16.2	15.8	15.9
AVG. TOTAL UNITS PER DAY	28	27.9	27.8	28	27.9	27.4	27.5
AVG. DAILY DIRECTED PATROL	2.7	2.6	2.5	2.2	1.3	1.1	1.9
AVG. DAILY EFFECTIVE STRENGTH *	46.8	46.7	46.4	46.5	45.4	44.3	45.4

* Effective Strength represents the actual number of officers on duty, including Directed Patrol



HARBOR PATROL SUMMARY

Activity	Number of Contacts	
	1990	1989
Citations and Arrests	42	64
Warnings	324	507
Accidents Investigated	19	17
Assist Other Agencies	164	223
Written Boat Inspections	236	345
Visual Boat Inspections	505	542
Complaints Investigated	46	54
Navigational Aid/Hazard Checks	70	124
Total Contacts	1,406	1,876

MOUNTED PATROL SUMMARY

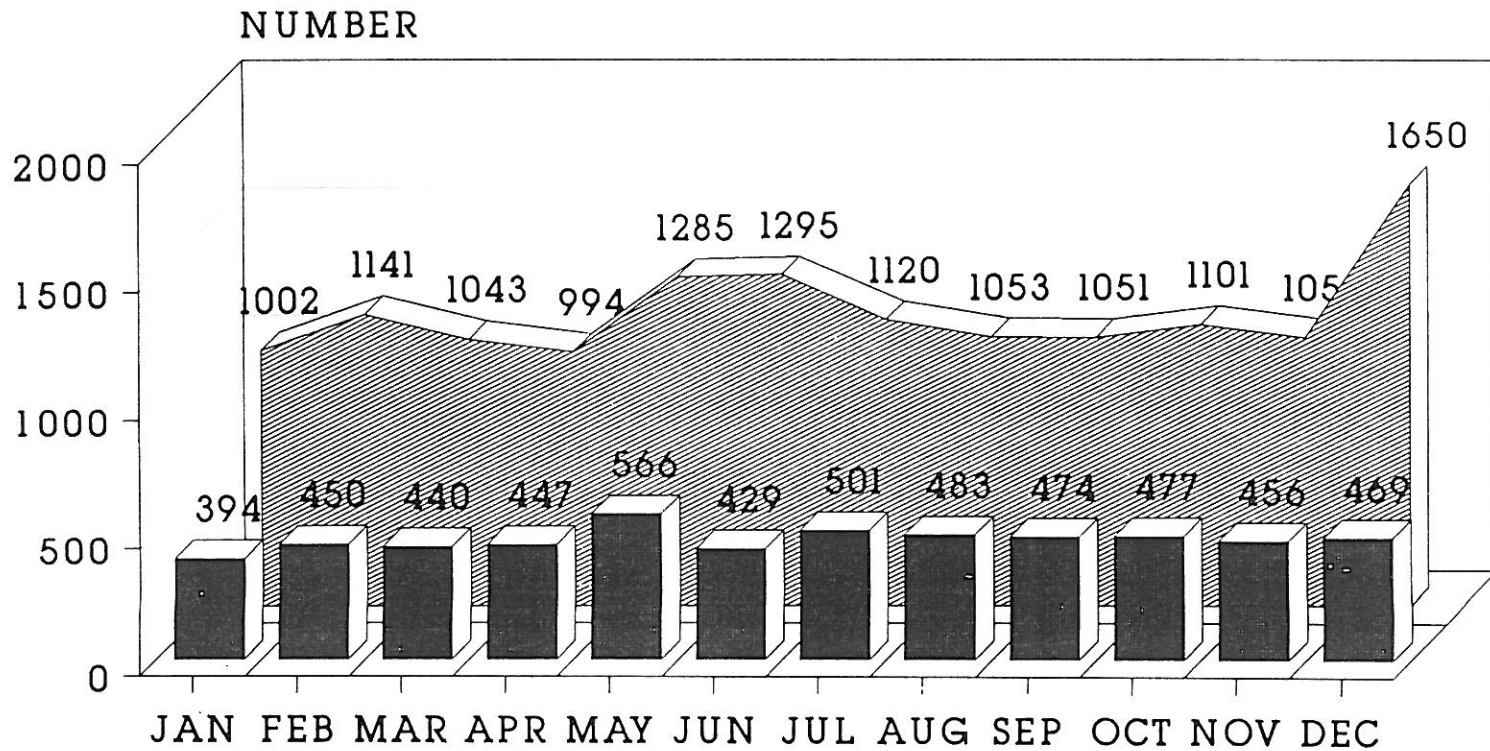
Activity	Number of Contacts	
	1990	1989
Calls for Service	4,774	3,536
Arrests	294	265
Traffic Citations	478	325
Parking Tags Issued	3,557	1,691
Crime Reports Filed	651	602
Vehicle Lockouts	1,107	1,038
Special Events	72	66

TRAFFIC SECTION

Hit Skip Accident Unit	1990	1989
Hit Skip Accidents Reported	4,042	4,721
Hit Skip Accidents Investigated	1,721	1,981
Cases Inactive	2,321	2,656
Cases Prosecuted	437	445
Cases Cleared Without Prosecution	835	898
Stolen Car Hit Skip Accidents	215	234
Cases Under Investigation	827	2,566
Cases Cleared by FOB Units	8	4
Outside Investigations	28	153

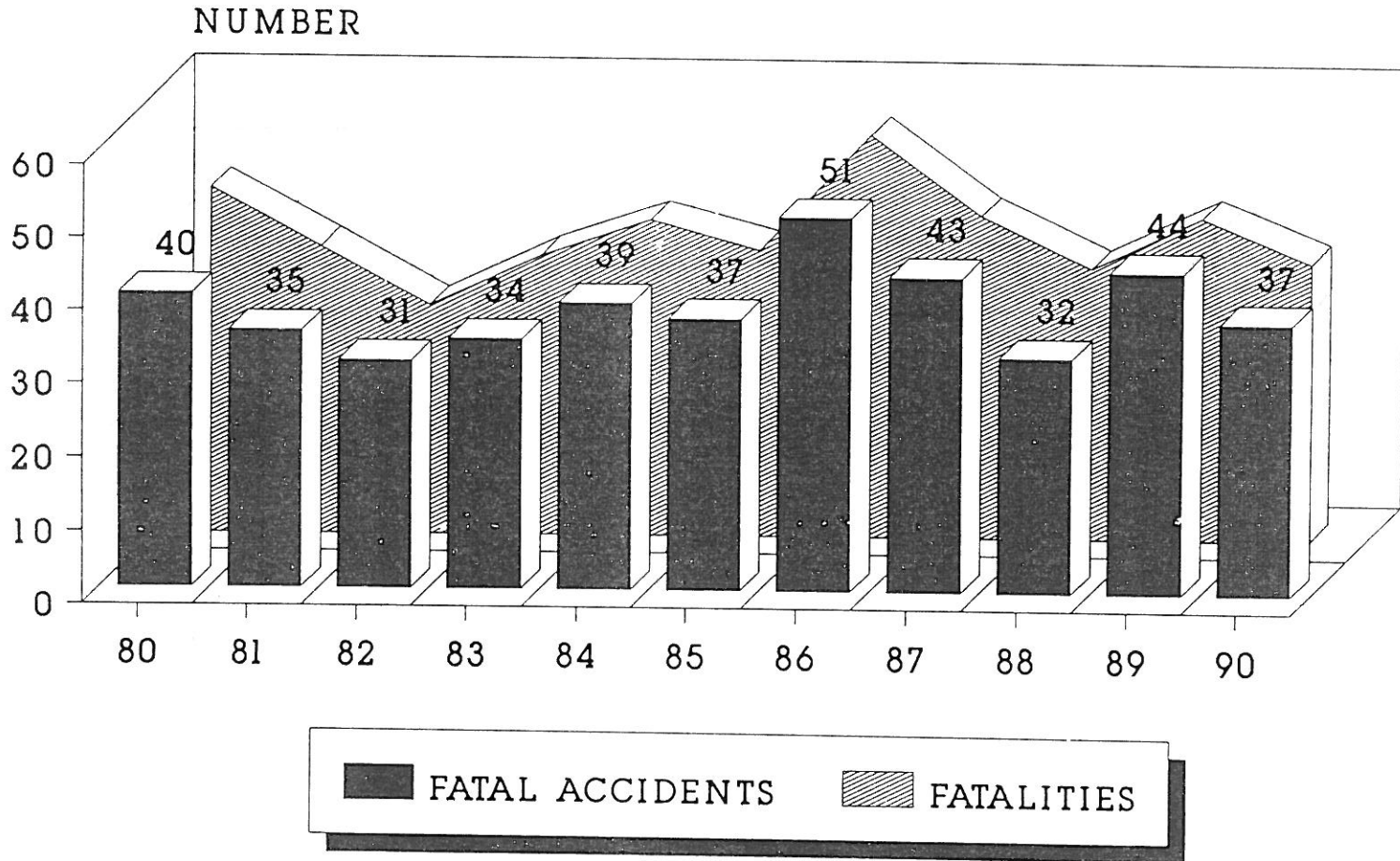
1990 TRAFFIC ACCIDENTS

INJURY AND PROPERTY DAMAGE



INJURY
 PROPERTY DAMAGE

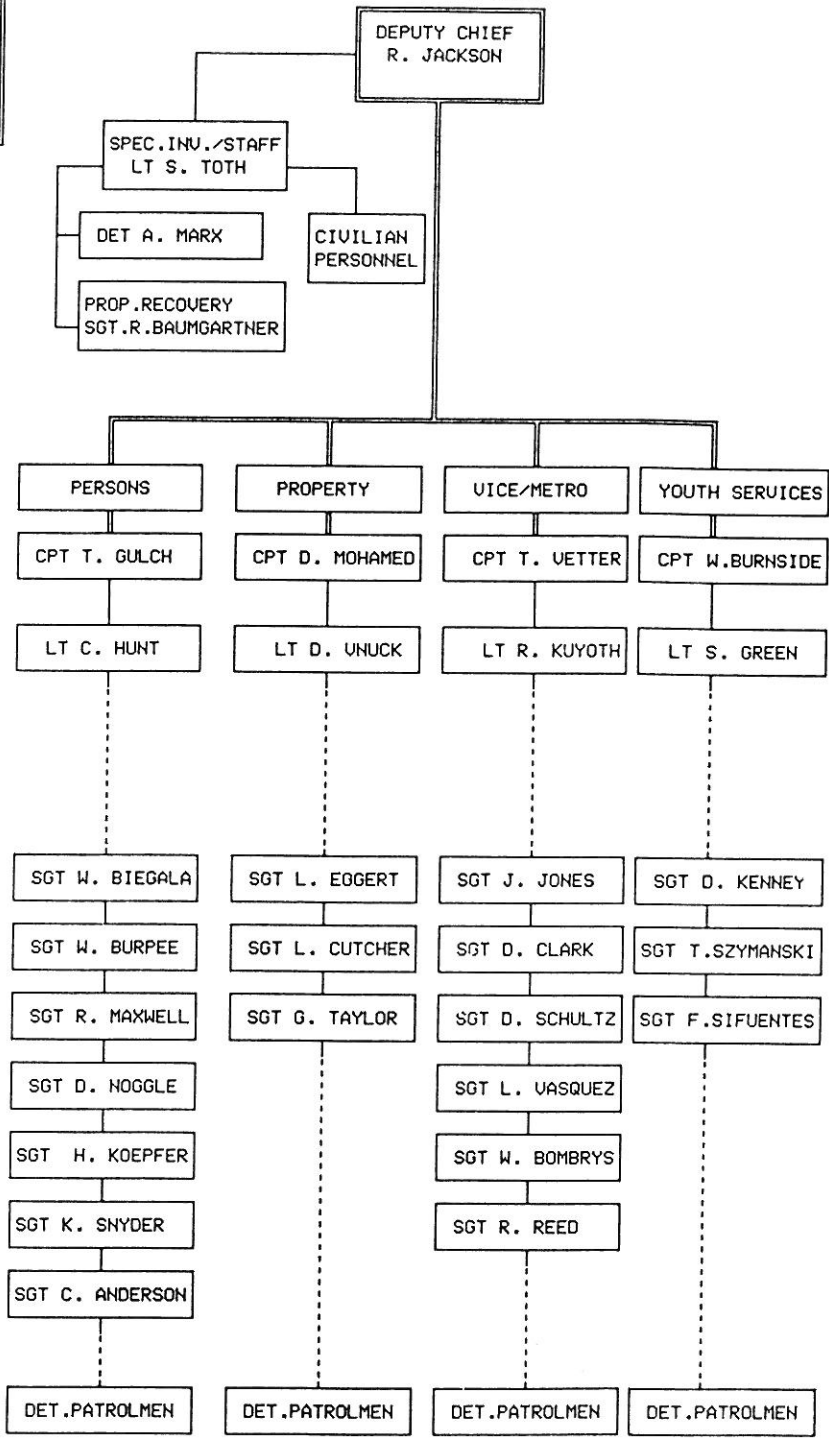
1980-1990 FATAL TRAFFIC ACCIDENTS



INVESTIGATIVE SERVICES BUREAU

Personnel:
 Deputy Chief- 1
 Captain - 4
 Lieutenants - 5
 Sergeants - 19
 Patrolmen - 85
 Civilians - 3

INVESTIGATIVE SERVICES BUREAU
 (As of: DEC 1990)



INVESTIGATIVE SERVICES BUREAU

ADMINISTRATIVE STAFF

The Administrative Staff of the Investigative Services Bureau has the responsibility of maintaining personnel time sheets, sick leave, vacation and all other records pertaining to the Bureau's personnel. It coordinates all roll call training; supervises the civilian desk technicians; provides a court officer for all felony arraignments; coordinates case information with the Lucas County Prosecutor's Office and Grand Jury; and ensures the service of subpoenas on Bureau personnel. In addition, it coordinates the highly successful Crime Stopper Program.

PROPERTY RECOVERY UNIT

The Property Recovery Unit monitors all of the local pawnshops, junk yards, and gold/silver shops. This Unit operates undercover STING operations, as well as investigating stolen and recovered property cases.

CRIME STOPPER PROGRAM

Crime Class	Cases Logged	Cases Solved	Arrests	Indictments
<i>Robbery</i>	97	9	9	3
<i>Homicide</i>	82	8	8	8
<i>Burglary</i>	58	42	15	8
<i>Auto Theft</i>	49	6	7	2
<i>Theft</i>	42	0	0	0
<i>Arson</i>	26	1	1	0
<i>Drugs</i>	363	21	16	3
<i>Rape</i>	10	4	7	3
<i>Hit-Skip</i>	11	2	0	0
<i>Weapons</i>	2	0	0	0
<i>Escape</i>	1	0	0	0
<i>Receiving</i>	27	0	0	0
<i>Liquor</i>	2	0	0	0
<i>Warrants</i>	89	68	33	1
<i>Forgery</i>	2	0	0	0
<i>Gambling</i>	5	0	0	0
<i>Fraud</i>	22	0	0	0
<i>Assault</i>	33	1	0	0
<i>Vandalism</i>	12	0	0	0
<i>Miscellaneous</i>	45	0	0	0
<i>255-DRUG</i>	123	9	10	8
<i>Total</i>	1,108	172	107	36

SUMMARY

During 1990, the Crime Stopper Program received a total of 1,108 calls which resulted in 107 arrests, 172 cases being solved, and 36 individuals being indicted.

In 1990, a total of \$8,300.00 in reward money was granted to persons who provided information to the Crime Stopper Program

The Crime Stopper Program received 486 drug related calls in 1990, of which 123 were received on the 255-DRUG line.

CRIMES AGAINST PERSONS SECTION

ROBBERY UNIT

This Unit investigates all commercial, street and financial institution robberies. Suspect auto and suspect photo files are kept to maintain current and past robbery events records in the event of similar offenses occurring. The Robbery Unit also correlates all information regarding suspects and possible locations for stake-outs with the uniformed units with the intention of on scene apprehension. Unit members are called upon to conduct line-ups, photo identifications, and one-on-one street identifications.

HOMICIDE UNIT

The Homicide Unit has a wide range of investigative responsibilities, from the investigation of purposeful deaths caused by violent means, to simple assault investigations. Its members work in close relationship with the Lucas County Coroner and his investigators. Additional investigative responsibilities include unattended death situations, felonious assaults, aggravated assaults, kidnapping, abduction, weapons offenses, elderly abuse, and incidents of racial, religious, and ethnic intimidation.

PERSONAL ASSAULT UNIT

This Unit investigates all sex related crimes, including sexual child abuse, and telephone harassment complaints. Its members attempt to recognize and evaluate series of similar sex related crimes in order to forward the information to the appropriate street patrol units. An on-going program is that of working with the Child Sexual Abuse Team at the Medical College of Ohio, in order to improve procedures related to the treatment of both victim and offenders. The Unit works actively with members of Toledo United Against Rape in training programs.

SCIENTIFIC INVESTIGATION UNIT

The Scientific Investigation Unit visits all major crime scenes with the task of sketching the scene, photographing it, as well as searching for and lifting fingerprints when found. Its members collect and preserve all physical evidence for future analysis and/or court presentations. In addition, its members attend autopsies when required and record the findings of the forensic pathologists, as well as collecting any evidence obtained as a result of the autopsy.

CRIMES AGAINST PERSONS SECTION

ROBBERY/HOMICIDE UNIT			
	1990	1989	% +/-
Complaints Received	21118	20217	4.5%
Homicides	37	42	-11.9%
Commercial Robberies	365	311	17.4%
Street Robberies	1141	1079	5.7%
Purse Snatches	190	215	-11.6%
Financial Institutions	14	11	27.3%
Other Felonies	913	730	25.1%
Domestic Violence	5949	6767	-12.1%
Other Misdemeanors	16990	16312	4.2%
PERSONAL ASSAULT UNIT			
Complaints Received	2249	2016	11.6%
Felonies	831	773	7.5%
Misdemeanors	1418	1243	14.1%
Rapes	423	354	19.5%
Attempted Rapes	35	45	-22.2%
Complaints Assigned	563	585	-3.8%
Arrests	166	292	-43.2%
Inactive	602	492	22.4%
Unfounded Complaints *	34	41	-17.1%
Exceptionally Cleared Complaints **	565	441	28.1%
SCIENTIFIC INVESTIGATION UNIT			
CRIME SCENE ASSIGNMENTS			
Latent Fingerprint Search	633	547	15.7%
Latent Fingerprint Lifts	412	345	19.4%
Photography Assignments	792	655	20.9%
NAA Tests	29	73	-60.3%
Crime Scene Sketches	43	17	152.9%
Moulage Casts	14	13	7.7%
OTHER ASSIGNMENTS			
Fingerprint Comparisons	445	495	-10.1%
Autopsies Attended	56	77	-27.3%
Polygraphs Administered	504	96	425.0%
UNFOUNDED COMPLAINTS	<i>A complaint is "unfounded" if the investigation determines that no offense occurred, nor was attempted.</i>		
EXCEPTIONALLY CLEARED COMPLAINT	<i>A complaint is "exceptionally cleared" when an offense has occurred and the identity of the suspect or offender has been established, but for certain reasons the offender will not be prosecuted.</i>		

CRIMES AGAINST PROPERTY SECTION

AUTO THEFT UNIT

The primary role of this Unit is to investigate all phases of auto theft and recoveries in an attempt to establish the pertinent information which will lead to the successful arrest and prosecution of the perpetrator. This Unit accomplishes this by maintaining files of stolen and recovered vehicles and by working actively with the uniformed patrol units, and adjacent police agencies in their vehicle investigations. By maintaining close working relationship with the various title officers and the Bureau of Motor Vehicles in Columbus, members of the Unit attempt to identify professional motor vehicle theft rings, as well as the routine teenage joyrider. In addition, the Unit is concerned with the theft prevention and investigation of heavy industrial equipment and marine type equipment offenses, as well as the investigation of altered, concealed, or obliterated vehicle identification numbers, and vehicle arson.

BURGLARY UNIT

The Burglary Unit investigates all residential and commercial break-ins that are reported to the Police Division. These investigations include the development of profiles of burglary suspects by examining crime scenes, interpreting physical evidence, interrogating suspects and interviewing witnesses. In order to link suspects and stolen items to the particular offense, the Burglary Unit provides constant communication with property recovery personnel. Information is collected and then disseminated to the patrol operations in order to advise them on particular burglary patterns. Citizen cooperation is solicited by presenting programs to the community illustrating a realistic picture of the burglary problem, and explaining the role of the responding officers, as well as the investigator assigned to the case.

CHECK UNIT

This Unit provides a complete investigative service pertaining to crimes of forgery and passing bad checks. It maintains files on active and inactive offenders of these types of crime and of stolen checks, as well as check writing machines. One of its primary roles is that of liaison with area banks and commercial lending institutions in disseminating information to assist in apprehending persons involved in forgery and the cashing of bad checks.

THEFT UNIT

The Theft Unit processes and investigates miscellaneous crime such as theft, credit card offenses, vandalism, and extortion. It has the responsibility of serving arrests warrants issued in other jurisdiction, when the person sought is in Toledo.

CRIMES AGAINST PROPERTY SECTION

AUTO UNIT			
	1990	1989	% +/-
Complaints Received	7015	6499	7.9%
Complaints Investigated	2685	3279	-18.1%
Stolen Autos	3529	3733	-5.5%
Recovered Autos	3159	3270	-3.4%
Arrests	661	697	-5.2%
Unfounded Complaints	103	197	-47.7%
Exceptionally Cleared	883	1182	-25.3%
BURGLARY UNIT			
Complaints Received	6422	7359	-12.7%
Residential Burglaries	4046	4704	-14.0%
Commercial Burglaries	1546	1432	8.0%
Complaints Investigated	5083	5338	-4.8%
Arrests	666	511	30.3%
Complaints Reduced	998	779	28.1%
Unfounded	60	33	81.8%
Exceptionally Cleared	408	308	32.5%
CHECK UNIT			
Complaints Received	6263	5847	7.1%
Misdemeanor Complaints	4867	4366	11.5%
Felony Complaints Investigated	1241	1138	9.1%
Felony Arrests	860	869	-1.0%
Exceptionally Cleared	473	306	54.6%
THEFT UNIT			
Complaints Received	22825	24070	-5.2%
Complaints Investigated	2117	2009	5.4%
Arrests	4230	3701	14.3%
Warrants Pending	4134	4695	-11.9%
Unfounded Complaints	21	30	-30.0%
Exceptionally Cleared	4090	4350	-6.0%

**VICE-METRO SECTION
YOUTH SERVICES SECTION
MISSING PERSONS UNIT**

VICE-METRO SECTION

The Vice-Metro Unit enforces all laws and regulations which are aimed at reducing or eliminating those activities related to drug trafficking, prostitution, gambling and liquor violations. Section members review all applications for arcades, bars, phrenologists, massage parlors, and dance halls. Within this area of responsibility, investigators conduct inspections of these types of businesses and perform background investigations of those persons operating the same. This Section is also called upon frequently to engage in educational programs dealing with drugs and gambling laws. Section members present community awareness programs to schools, churches, and other groups upon request.

YOUTH SERVICES SECTION

This Section has the extremely important responsibility of investigating crimes which are committed by or perpetrated against juveniles, with the exception of murder and felony sex offenses. The Section also has the responsibility for investigating child abuse cases and status offense cases. The Section is called upon to intervene and investigate many family related problems such as domestic violence, unruly youths, incidents involving the contributing to the delinquency of minors, and child stealing.

MISSING PERSONS UNIT

The Missing Persons Unit, as the name implies, takes reports of missing people and runaways. The Unit is responsible for the evaluation, coordination, and investigation of reports of missing persons, with the aim of locating or apprehending these parties. Unit members endeavor to build criminal cases against those adults who willfully harbor runaways in an effort to reduce the number of places juvenile runaways can go within the community. In order to update and improve their operation, the Unit endeavor to maintain an awareness of national changes occurring in this investigative area.

VICE-METRO SECTION			
	1990	1989	% +/-
ARREST SUMMARY			
Prostitution	951	1220	-22.0%
Gambling	11	36	-69.4%
Liquor	142	103	37.9%
Miscellaneous	580	838	-30.8%
Drug Charges *	1808	1049	72.4%
Drug Arrests *	1533	1650	-7.1%
OTHER ACTIVITIES			
License Applications	239	257	-7.0%
Search Warrants	350	245	42.9%
Public Speeches	21	25	-16.0%
Dollar Value of Drugs Seized	\$3,932,745	\$3,272,914	20.2%

* Prior to 1990, drug related arrests were recorded by the total number of drug charges filed; not by the number of individuals arrested on drug related charges. In the future, both dimensions of drug activities will be recorded; the number of drug charges filed and the number of individuals arrested.

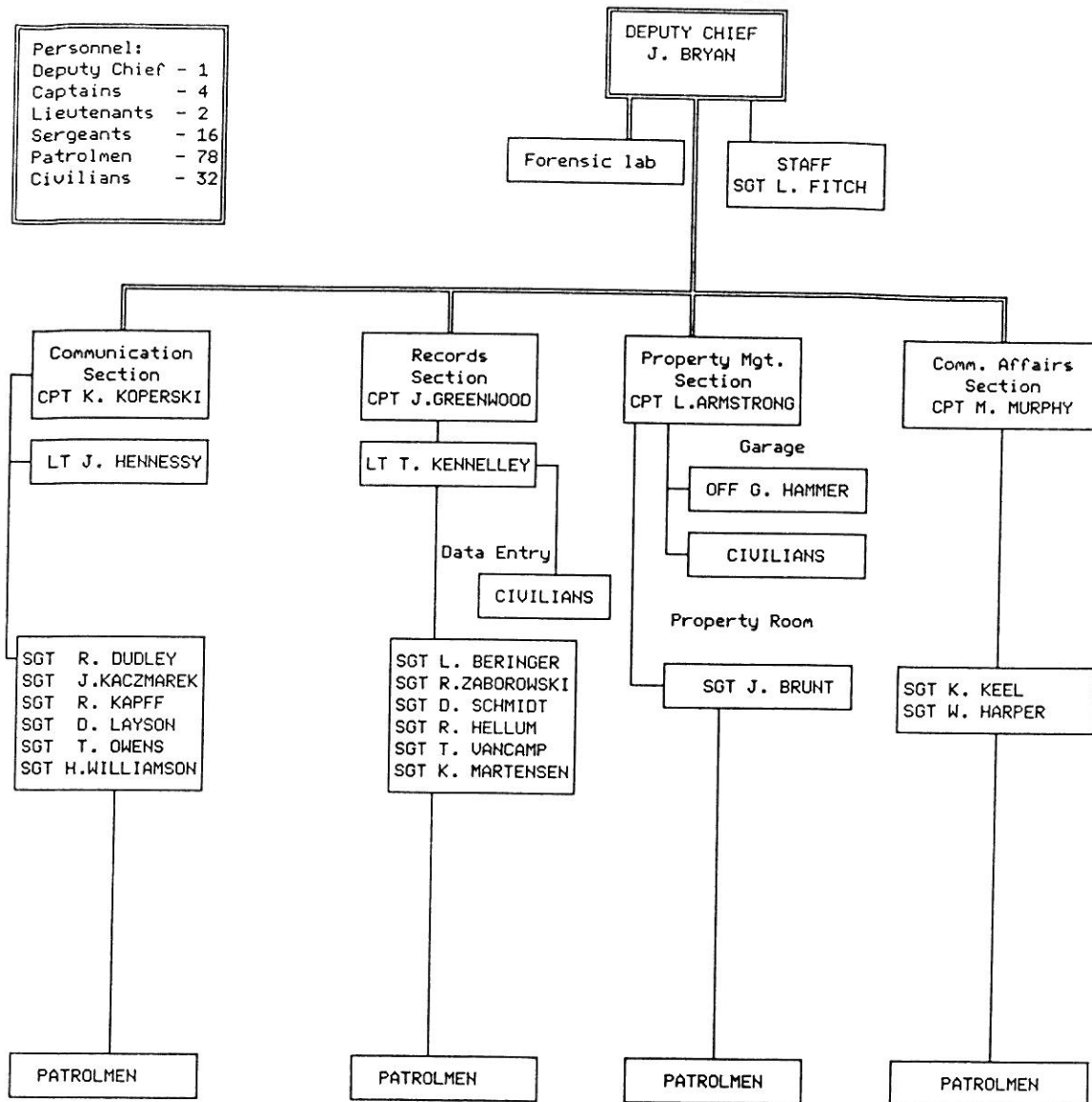
YOUTH SERVICES SECTION

Complaints Received	14711	15276	-3.7%
Complaints Unassigned	3700	0	
Complaints Cleared			
by arrest	4711	5940	-20.7%
cases adjusted	1887	2714	-30.5%
exceptionally cleared	1526	2396	-36.3%
inactive	1644	2375	-30.8%
unfounded	69	96	-28.1%
investigation	533	1755	-69.6%
Cases Closed	10370	15276	-32.1%
Cases Continued	641	0	

SUPPORT SERVICES BUREAU

SUPPORT SERVICES BUREAU
(As of: DEC 1990)

Personnel:	
Deputy Chief	- 1
Captains	- 4
Lieutenants	- 2
Sergeants	- 16
Patrolmen	- 78
Civilians	- 32



SUPPORT SERVICES BUREAU

COMMUNICATIONS SECTION

The Communications Section, as its name implies, is the primary hub of the entire Police Division's emergency communications network, including: telephone communications, radio communications, and teletype communications. This Section receives and records on tape, all necessary incoming calls, both by radio and by telephone. It is responsible for dispatching all necessary police units to calls for service and other police situations. Section personnel monitor the National Weather Service teletype and broadcast all severe weather information. In addition, this Section is responsible for maintaining the portable radio inventory and the battery management program to ensure the proper functioning of the portable radio equipment.

	1990	1989	% +/-
Total Incoming Calls	349,649	334,515	4.2
6am x 2pm	87,667	84,424	3.8
2pm x 10pm	145,703	140,664	3.6
10pm x 6am	116,279	109,427	6.3
Telephone Reporting Unit	19,203	17,378	10.5
18 Hour Parking Checks	2,502	3,351	-25.3

RECORDS SECTION

The Police Division's Records Section acts as the central repository of all Division crime reports, criminal histories, information on lost, stolen, and recovered property, and all other operational information. By maintaining a historical record of Division activities such as files and updates on criminals, suspected criminals, person wanted on warrants, arrests, criminal activity statistics, fingerprints, photographs, stolen and recovered property and vehicles, information is readily accessible to Division members and other qualified agencies.

ACTIVITY	1990	1989	% +/-
Total Reports Processed	102,860	104,871	-1%
T.R.U. Reports	15,226	14,955	1%
Total Arrests Processed	24,015	22,204	8%
Fingerprints Processed	39,090	37,391	4%
Total Records Checks	18,038	18,460	-2%
Total Vehicle Tows	11,026	11,812	-6%
Total Vehicles Junked	2,209	3,685	-40%
Vehicles Auctioned	87	137	-36%
INCOME RECEIVED			
Crime reports	\$46,468	\$40,780	14%
Record Checks	\$46,997	\$44,630	5%
Vehicle Auction	\$59,780	\$66,620	-10%
Identification Section	\$11,518	\$10,428	10%
Total Income	\$164,763	\$162,358	1%

FORENSIC LABORATORY

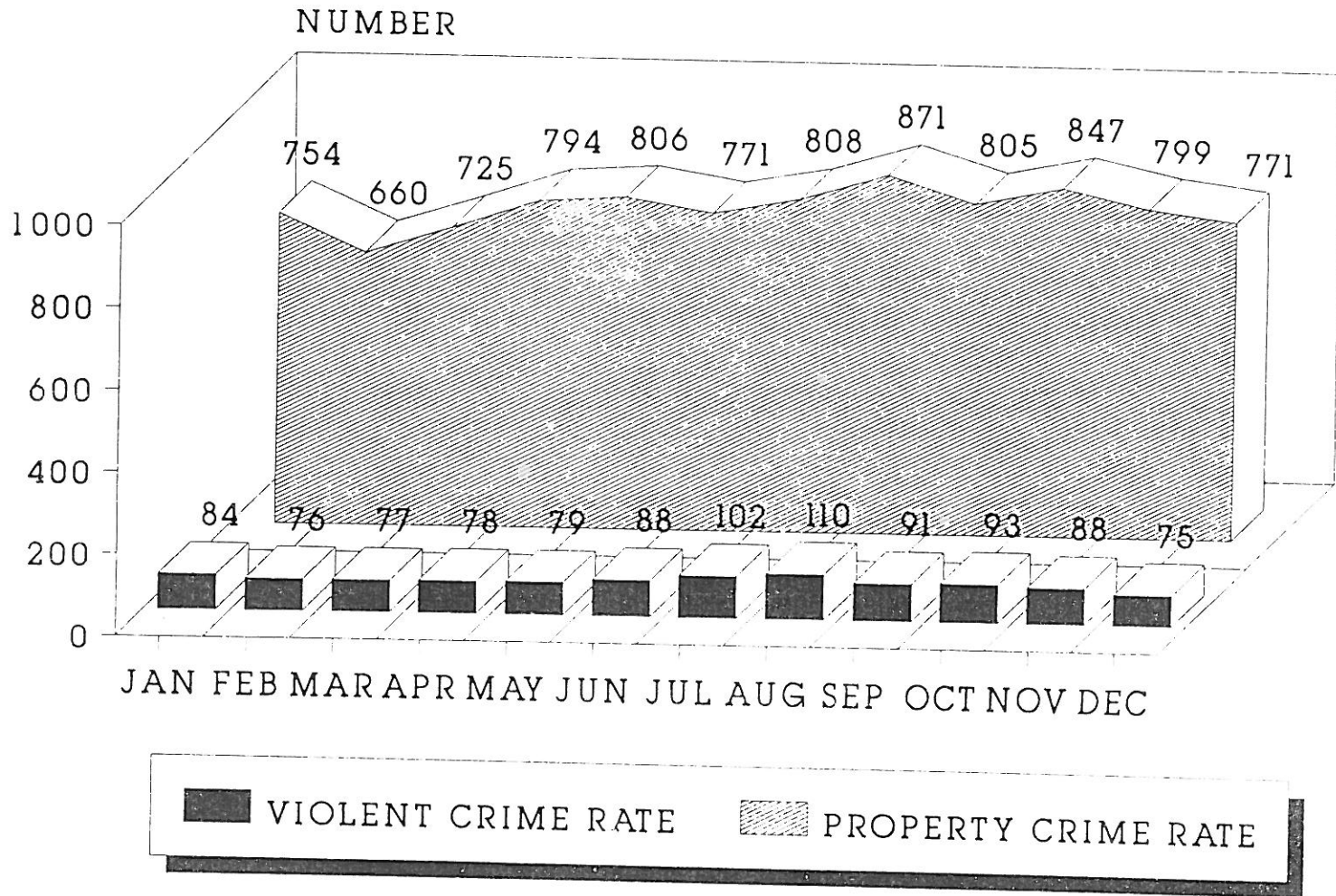
The Toledo Police Regional Forensic Laboratory provides its technical services to all area law enforcement agencies. Working in conjunction with the Scientific Investigation Unit, it develops proper methods for the collection and preservation of physical evidence. Lab services which are provided include: forensic drug analysis, arson analysis, firearms, identification, serial number restoration, blood alcohol determination, serological testing, hair and fibre determination and various other microanalytical techniques. Crime Lab personnel are called upon to testify in court with respect to their analytical findings.

Cases Received	1990	1989	% +/-
Toledo Police Division	2,206	2,361	-6.6
Outside Agencies	86	167	-48.5
Analysis Type			
General Analytical Chemistry	23	22	4.5
Serological/Microscopy	134	113	18.6
Firearms Identification/Toolmarks	176	144	22.2
Drug Chemistry (Marijuana)	218	238	-8.4
Drug Chemistry (cocaine, etc.)	1,603	1,866	-14.1
Alcohol Determination	160	178	-10.1
Miscellaneous	2	3	-33.3
Total Cases	<u>2,292</u>	<u>2,528</u>	-9.3
Subpoenas Received	595	712	-16.4

CRIME DATA

1990 UNIFORM CRIME REPORTS DATA

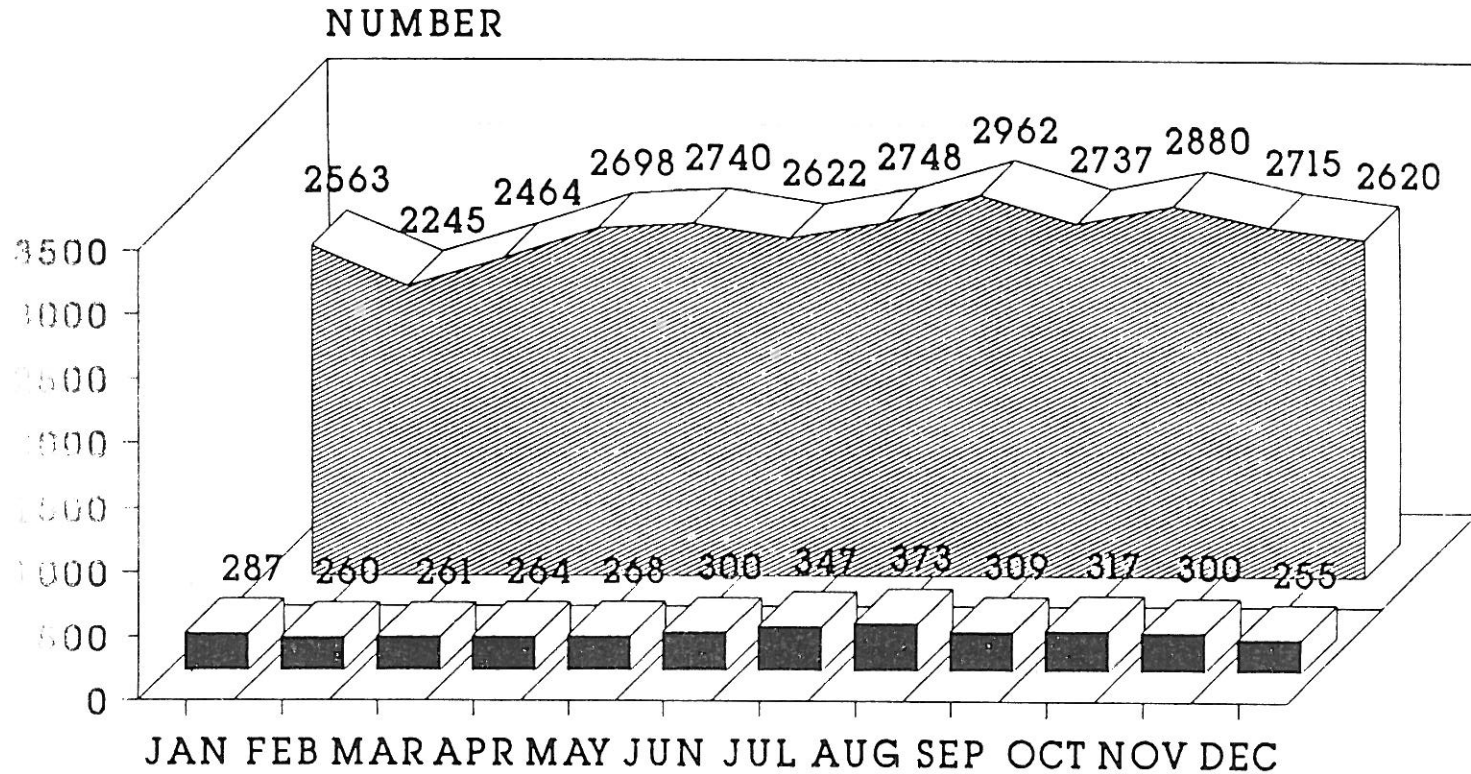
CRIME RATE PER 100,000



Based on 342,418 Estimated Population

1990 UNIFORM CRIME REPORTS DATA

TOTAL OFFENSES PER MONTH



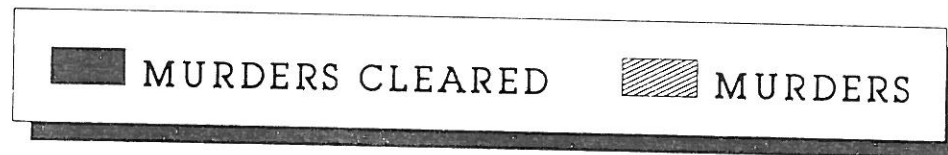
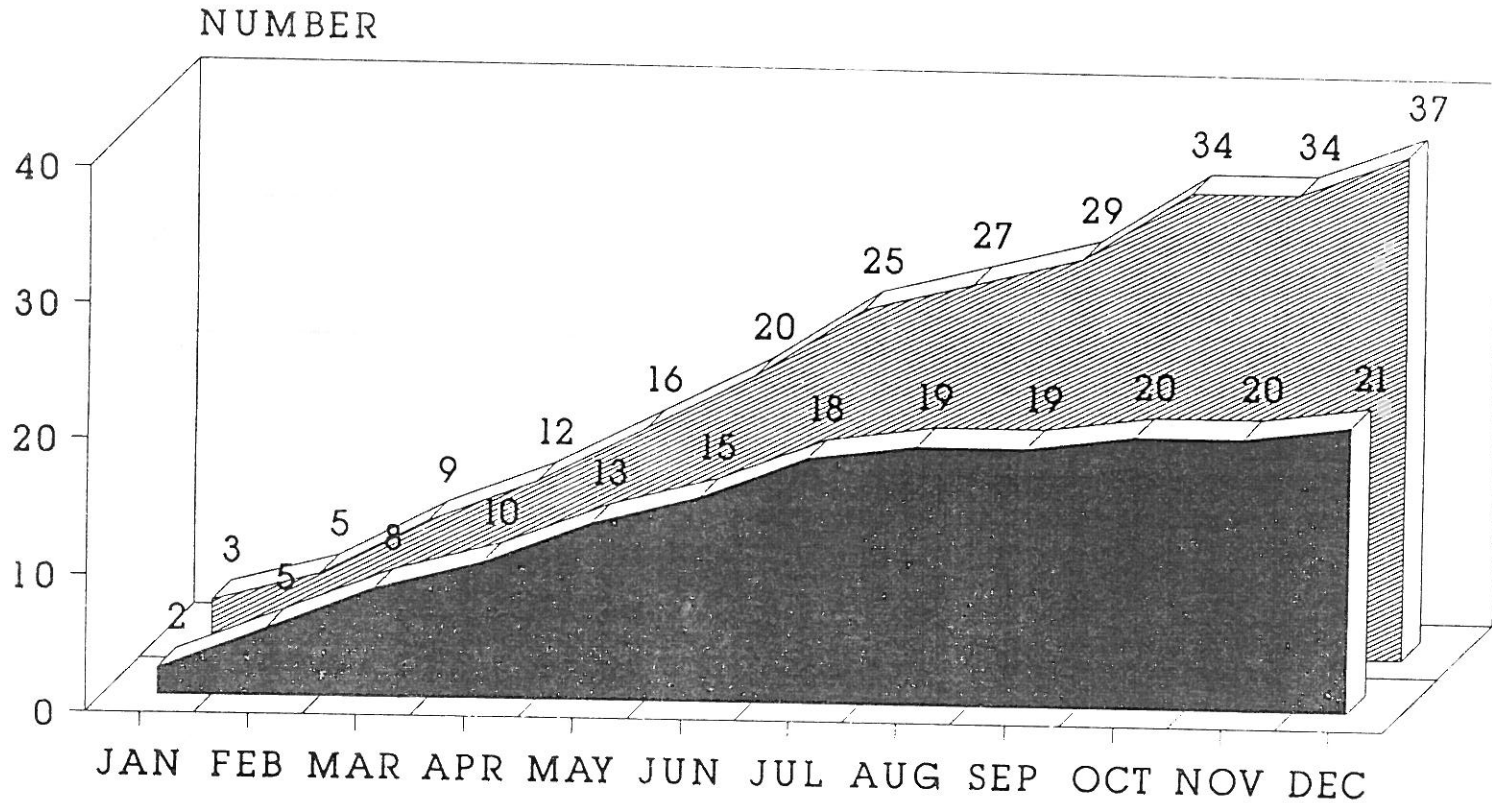
VIOLENT CRIMES



PROPERTY CRIMES

1990 UNIFORM CRIME REPORTS DATA

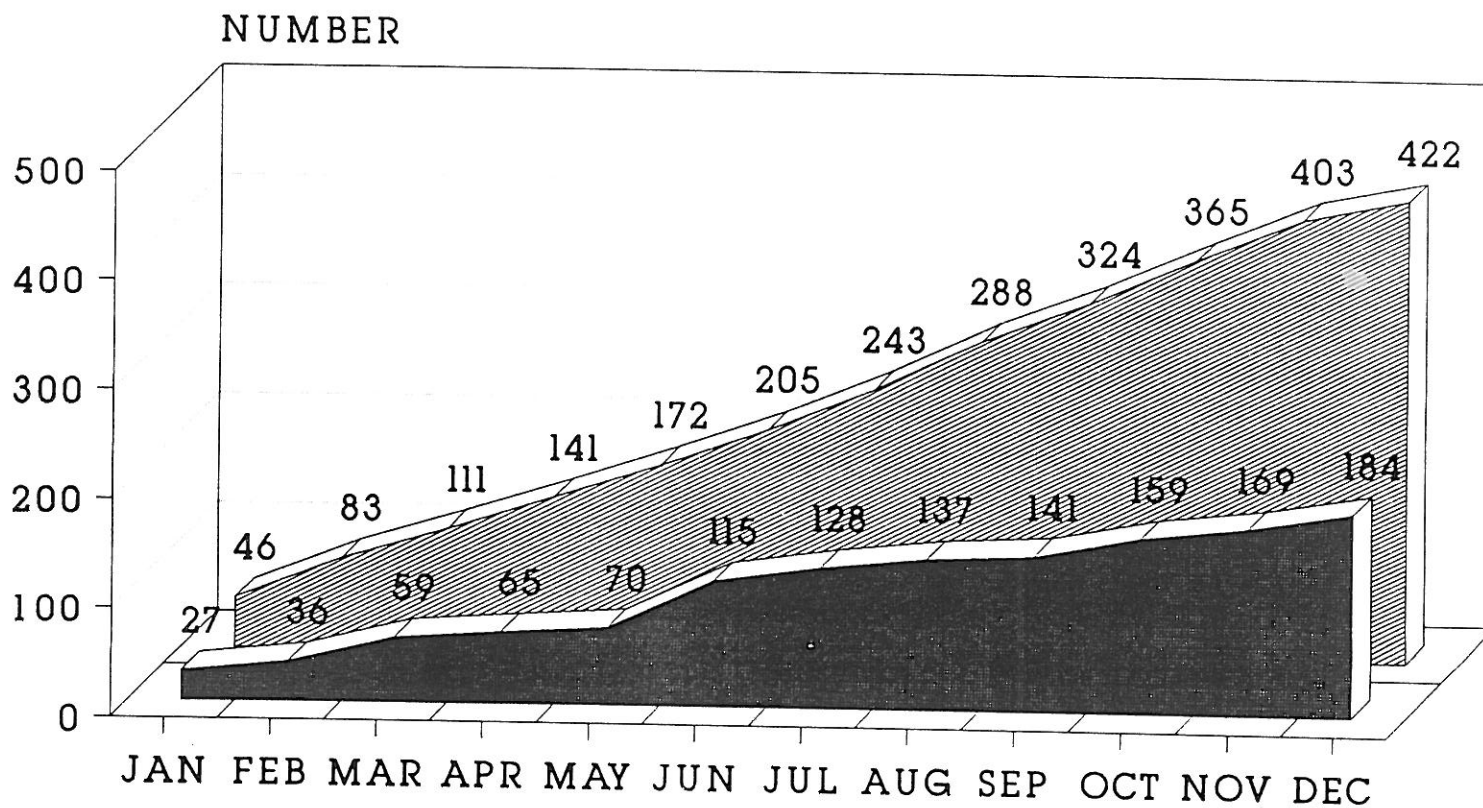
CUMULATIVE DATA



AS OF DECEMBER 31, 1990

1990 UNIFORM CRIME REPORTS DATA

CUMULATIVE DATA



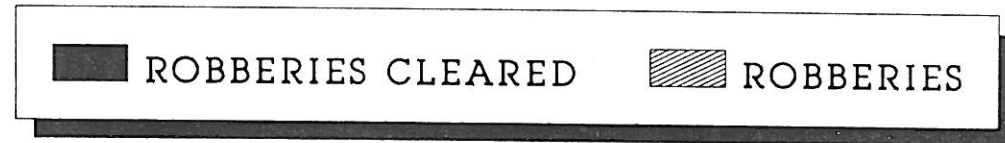
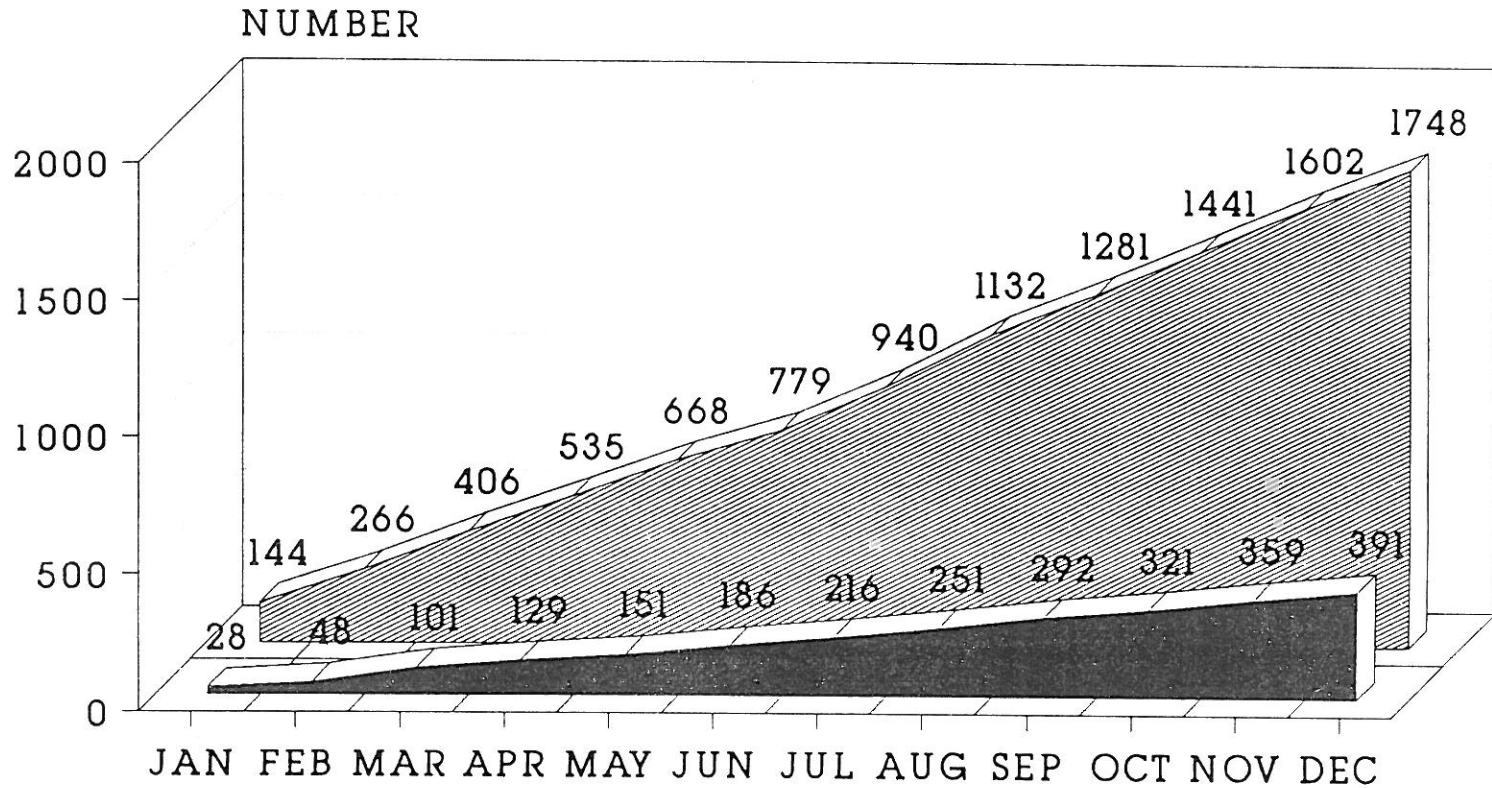
RAPES CLEARED

 RAPES

AS OF DECEMBER 31, 1990

1990 UNIFORM CRIME REPORTS DATA

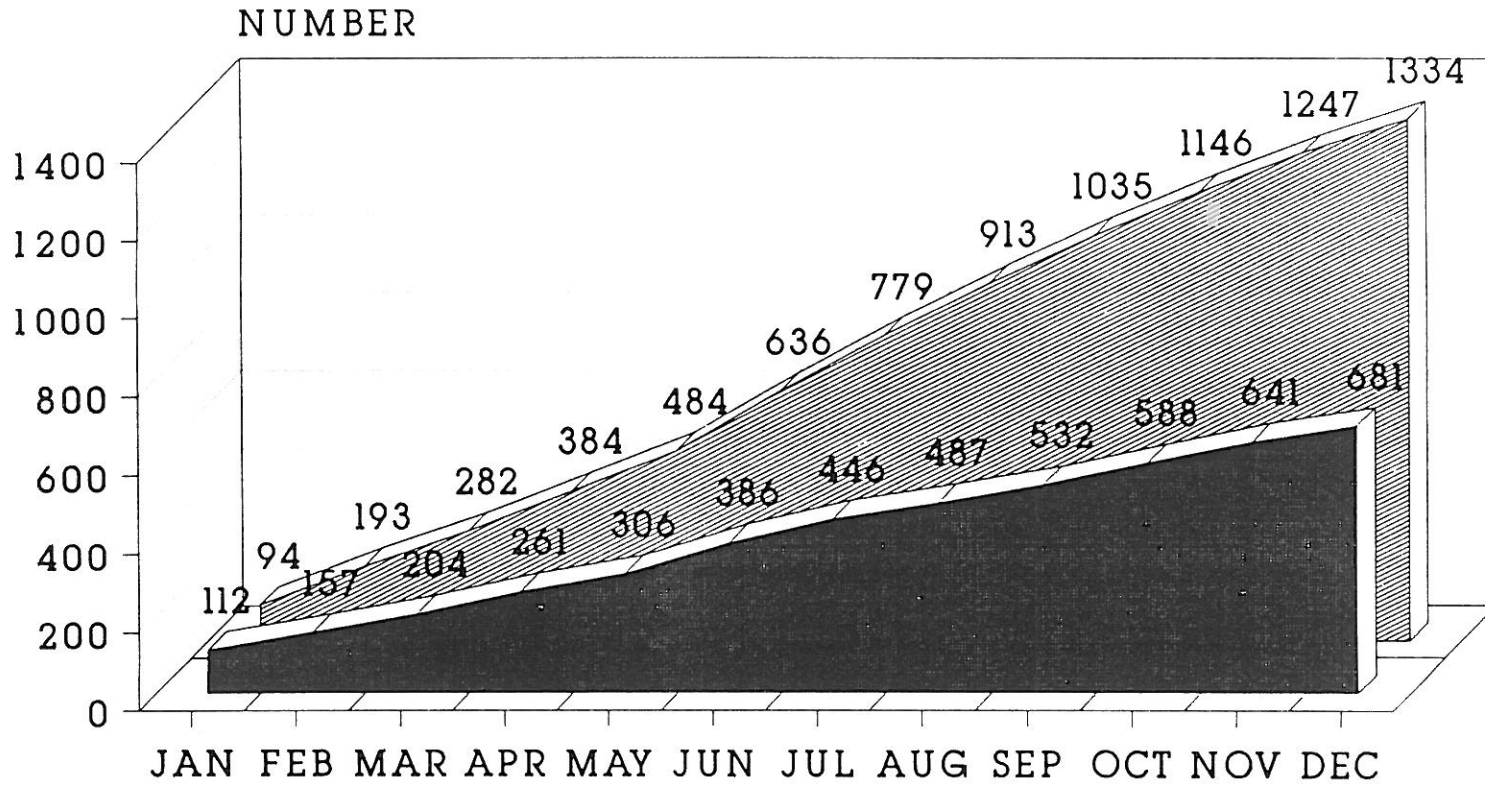
CUMULATIVE DATA



AS OF DECEMBER 31, 1990

1990 UNIFORM CRIME REPORTS DATA

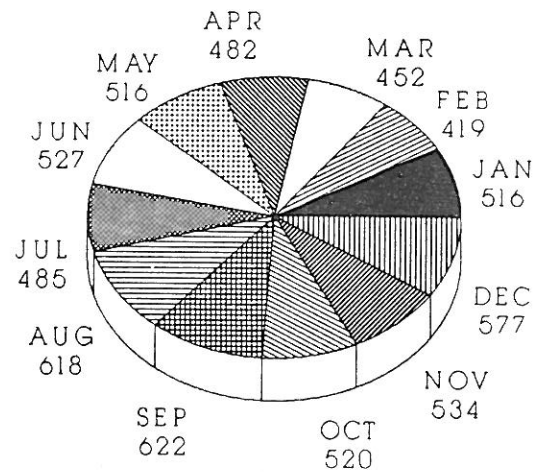
CUMULATIVE DATA



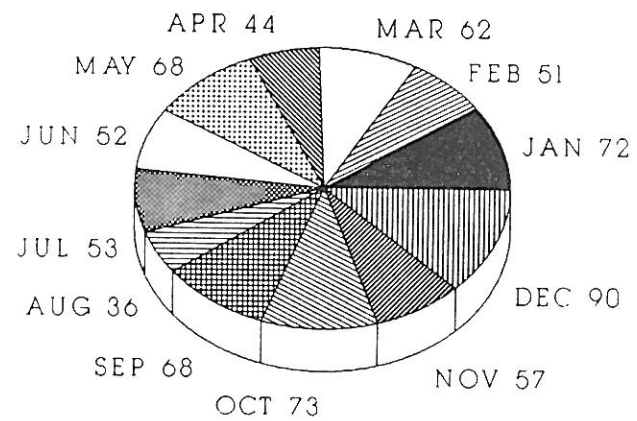
AS OF DECEMBER 31, 1990

1990 UNIFORM CRIME REPORTS DATA

BURGLARIES



NUMBER

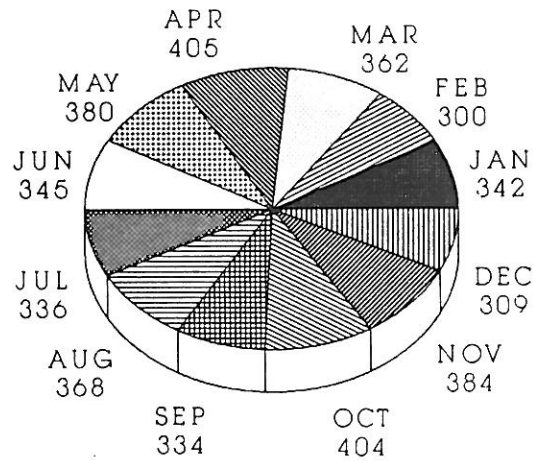


OFFENSES CLEARED

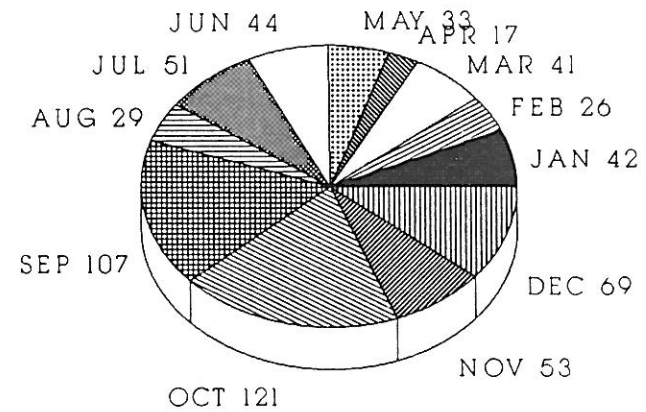
AS OF DECEMBER 31, 1990

1990 UNIFORM CRIME REPORTS DATA

LARCENIES \$300+



NUMBER

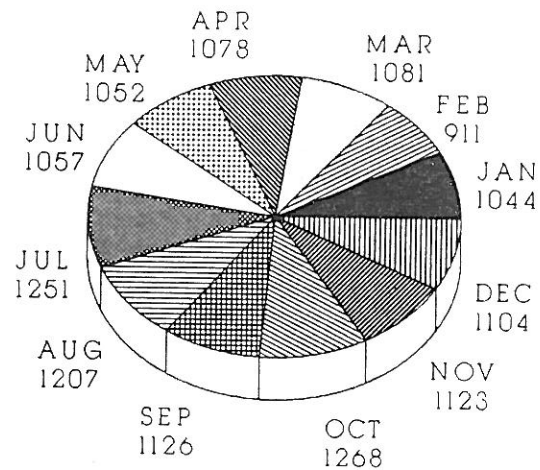


OFFENSES CLEARED

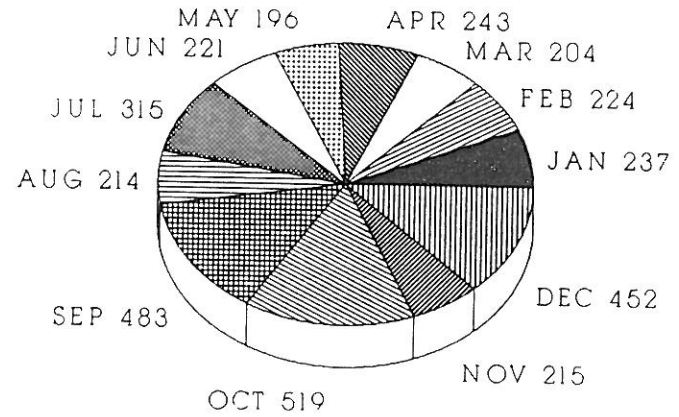
AS OF DECEMBER 31, 1990

1990 UNIFORM CRIME REPORTS DATA

LARCENIES \$299-



NUMBER

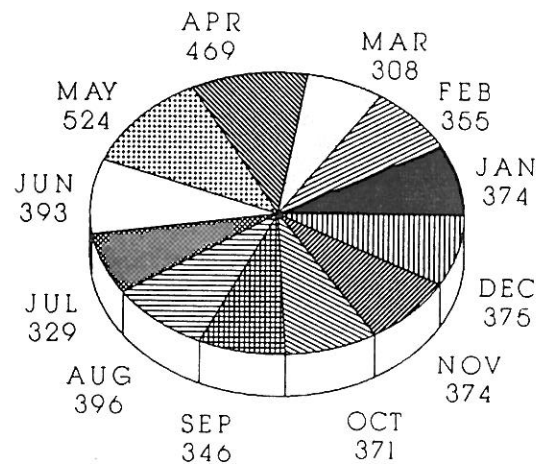


OFFENSES CLEARED

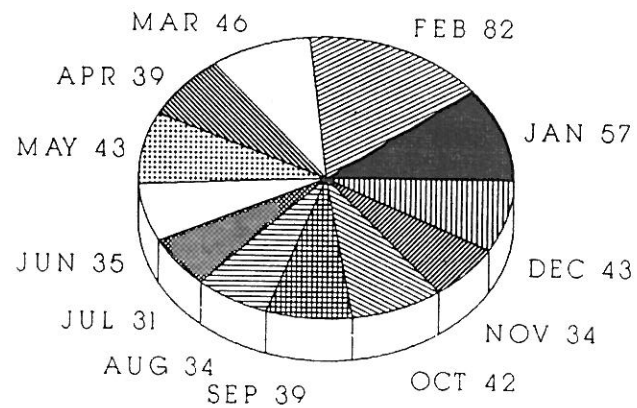
AS OF DECEMBER 31, 1990

1990 UNIFORM CRIME REPORTS DATA

AUTO THEFTS



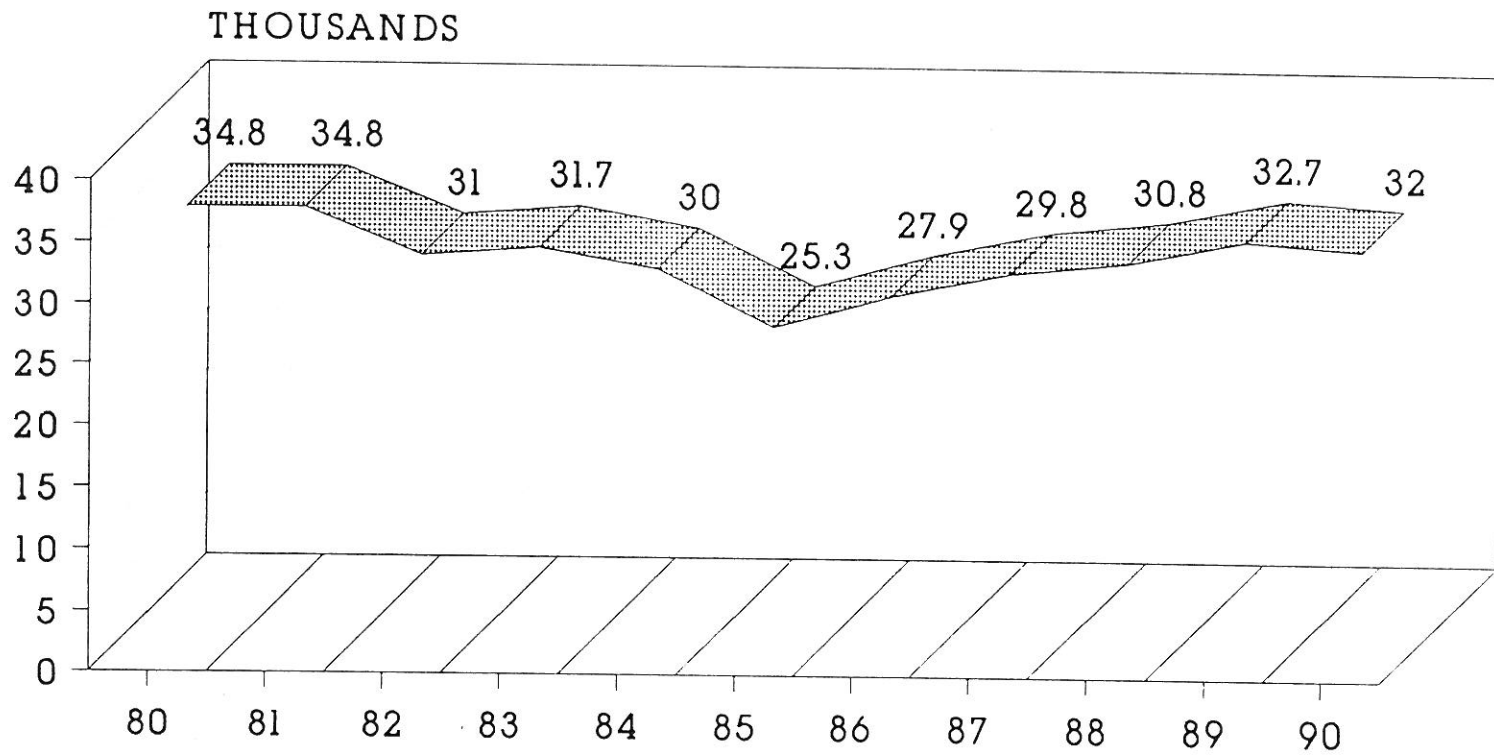
NUMBER

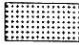


OFFENSES CLEARED

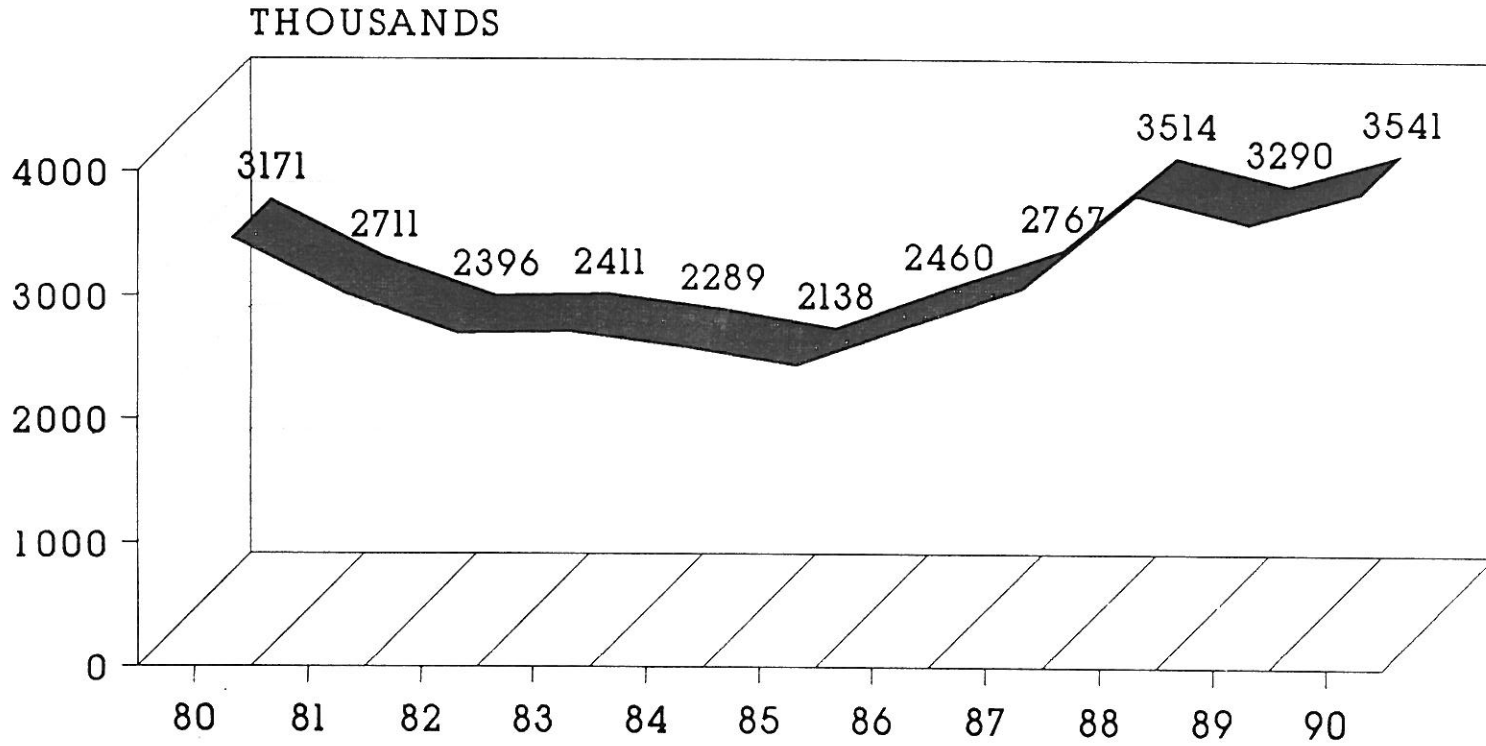
AS OF DECEMBER 31, 1990

UNIFORM CRIME REPORTS DATA 1980-1990



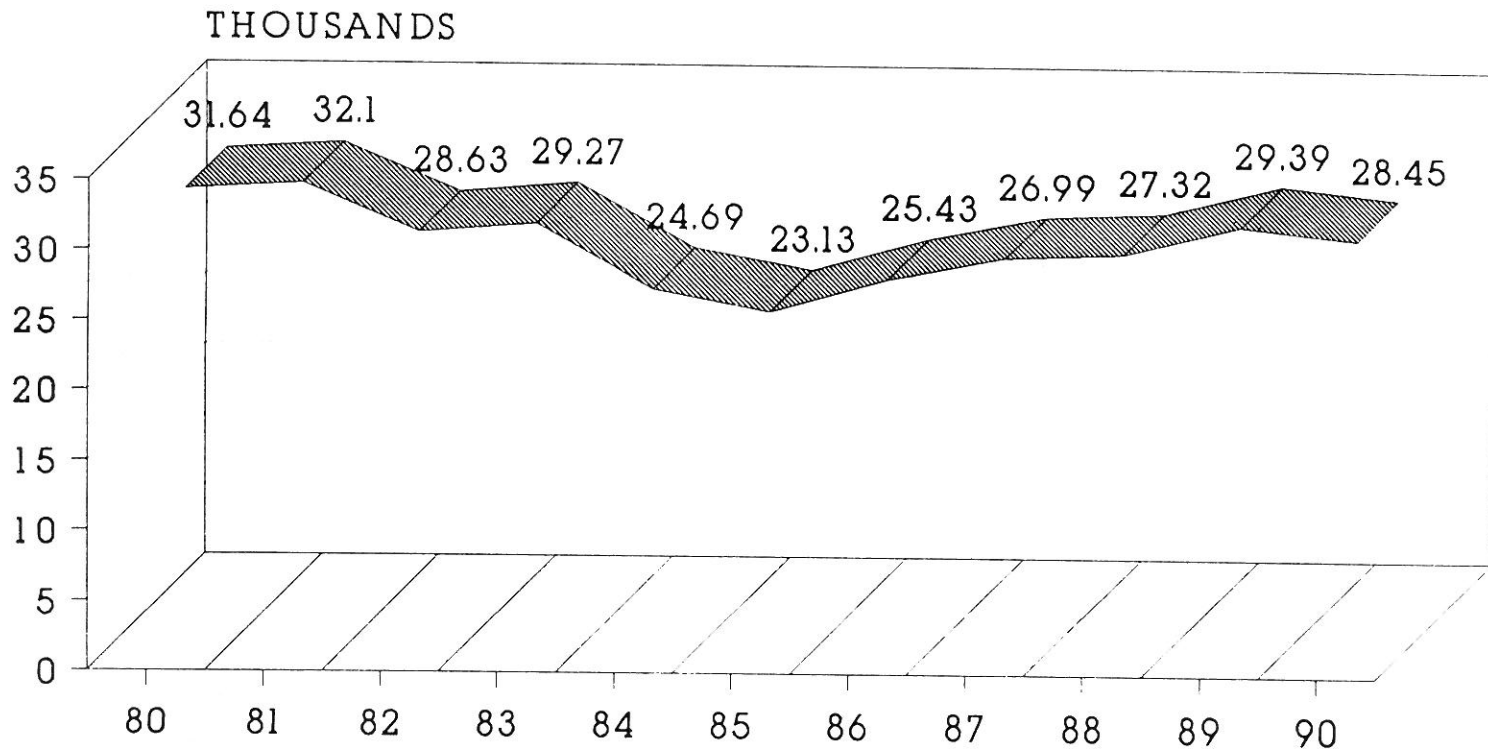
 CRIME INDEX

UNIFORM CRIME REPORTS DATA 1980-1990



■ VIOLENT CRIMES

UNIFORM CRIME REPORTS DATA 1980-1990



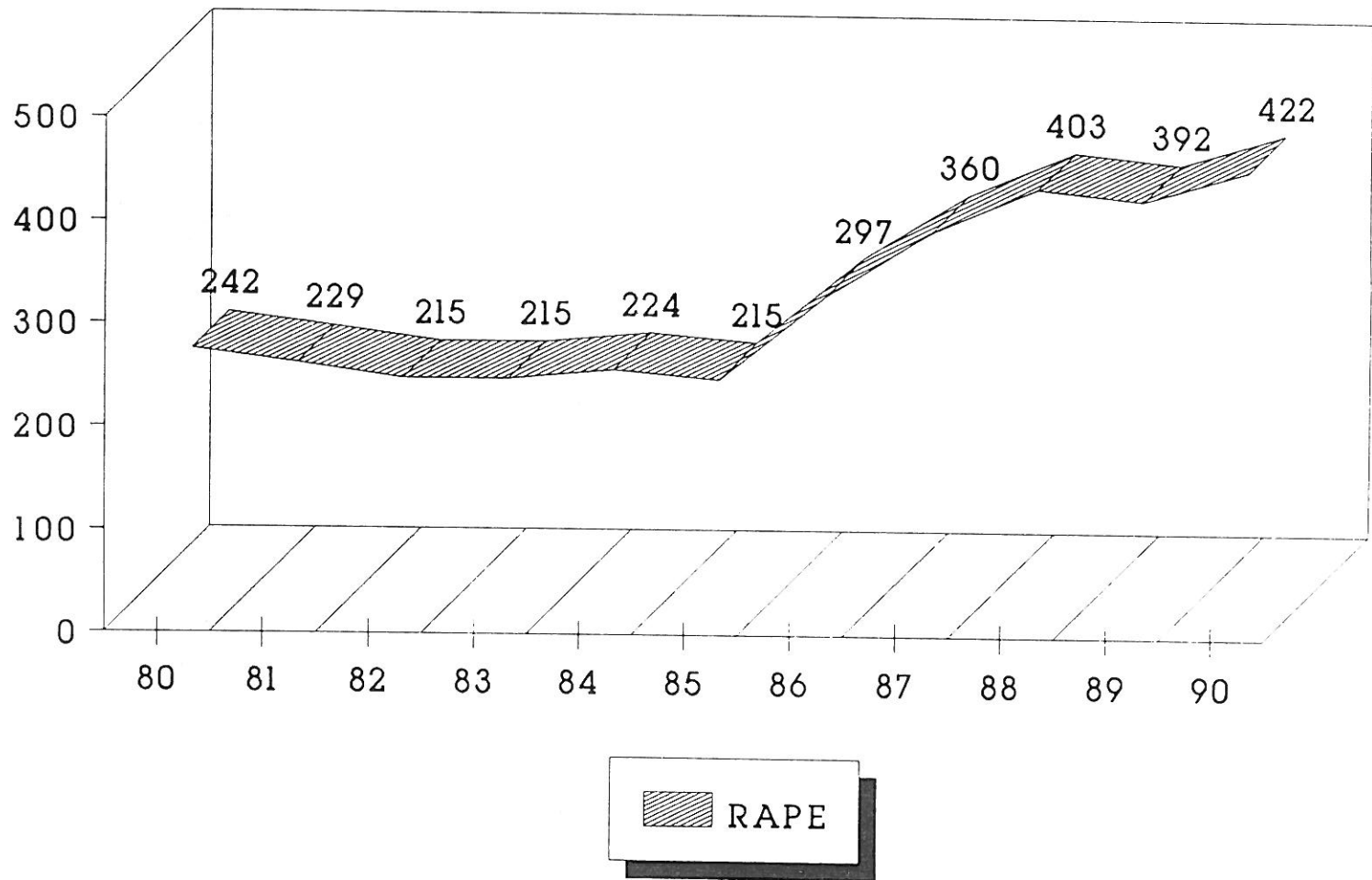
PROPERTY CRIMES

UNIFORM CRIME REPORTS DATA

1980-1990

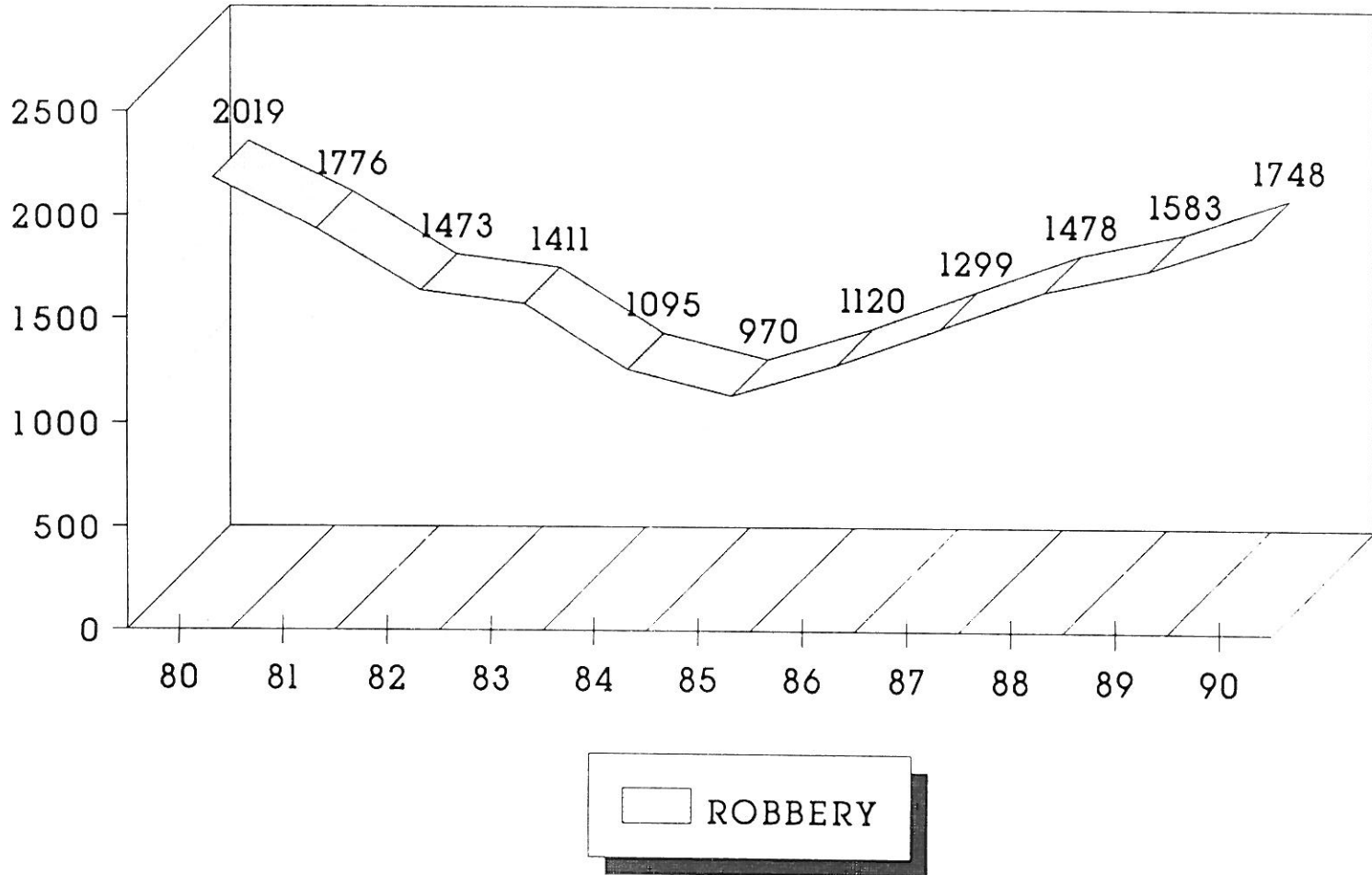


UNIFORM CRIME REPORTS DATA 1980-1990



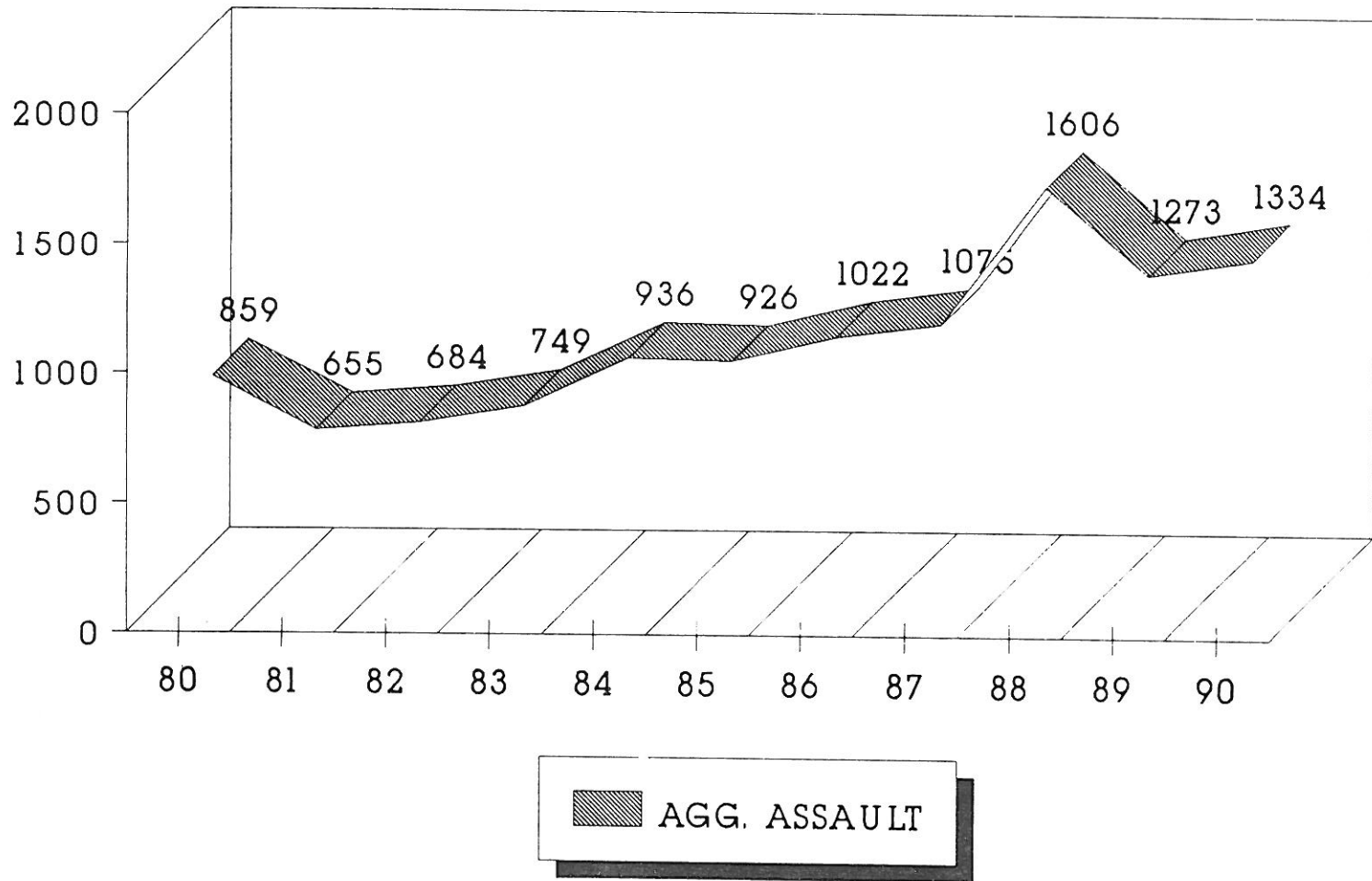
UNIFORM CRIME REPORTS DATA

1980-1990



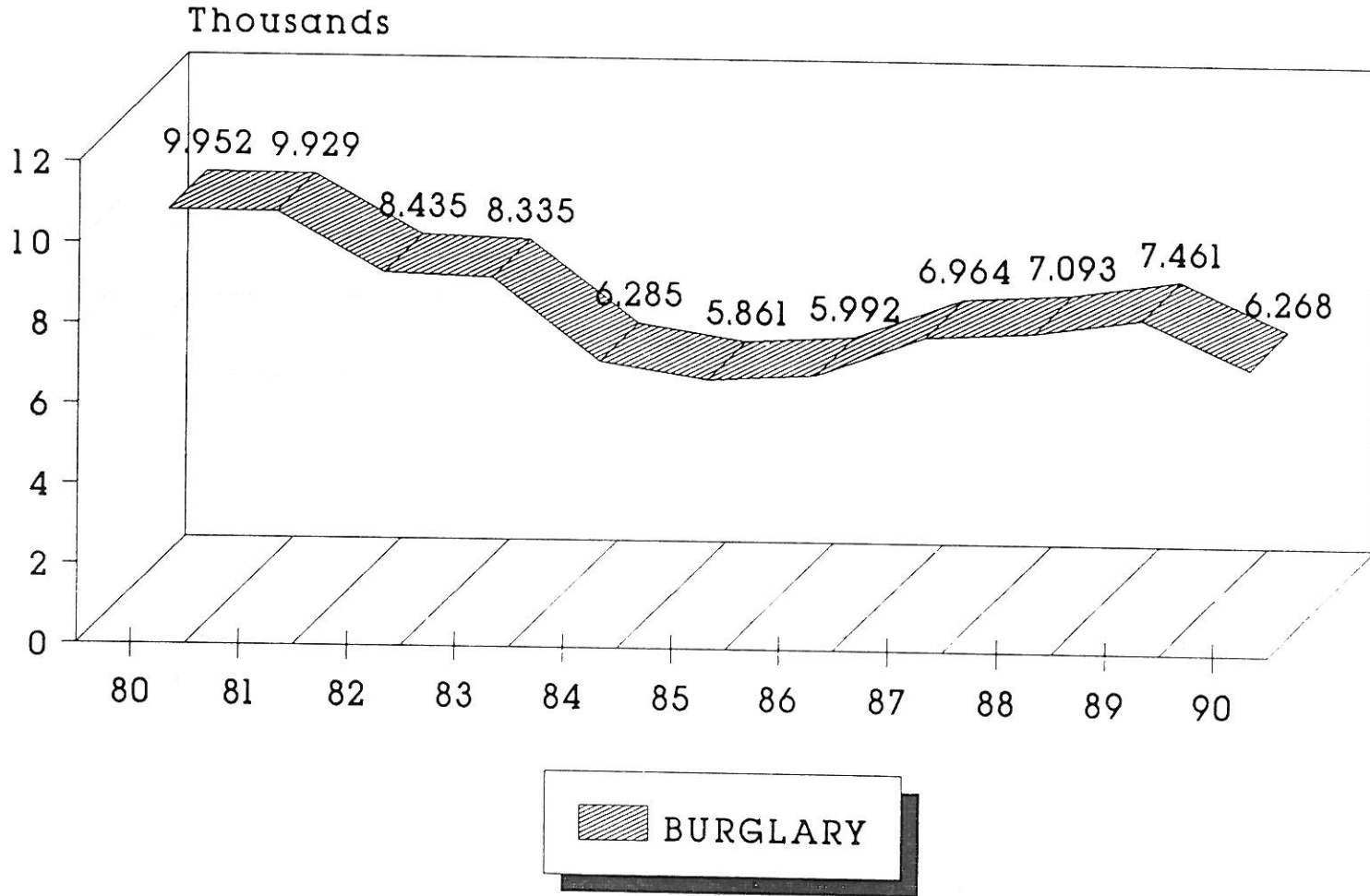
UNIFORM CRIME REPORTS DATA

1980-1990



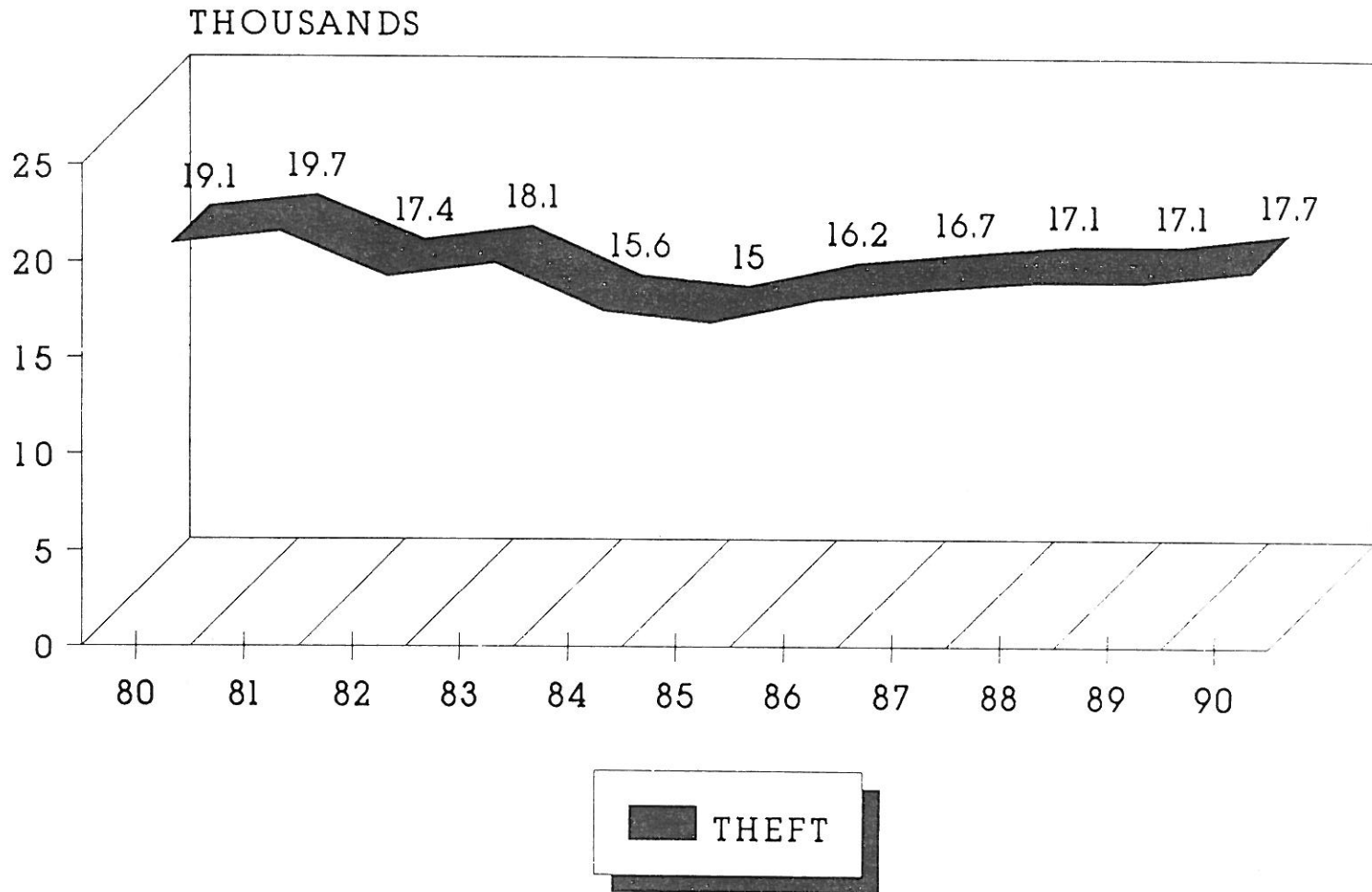
UNIFORM CRIME REPORTS DATA

1980-1990

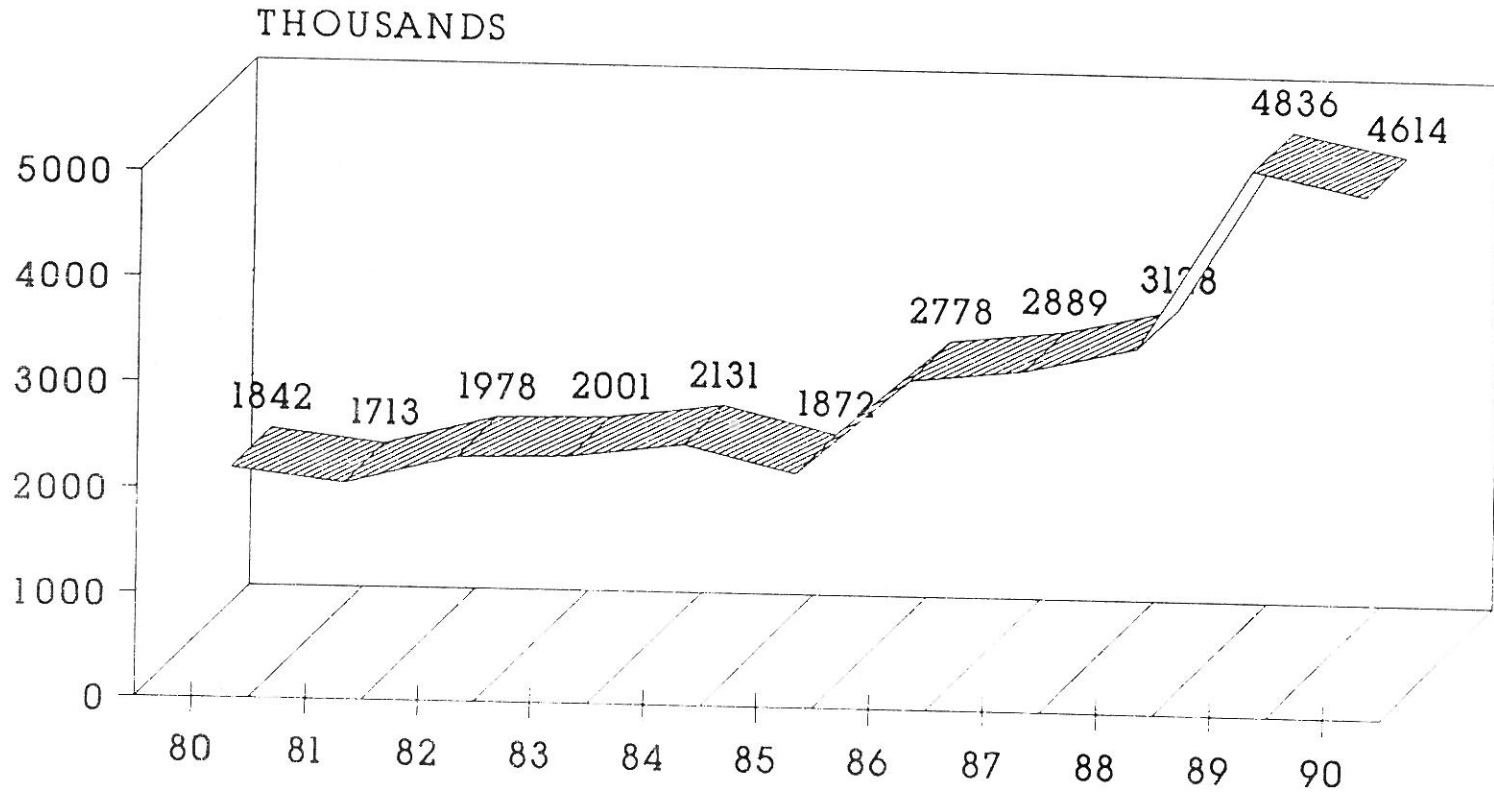



UNIFORM CRIME REPORTS DATA

1980-1990

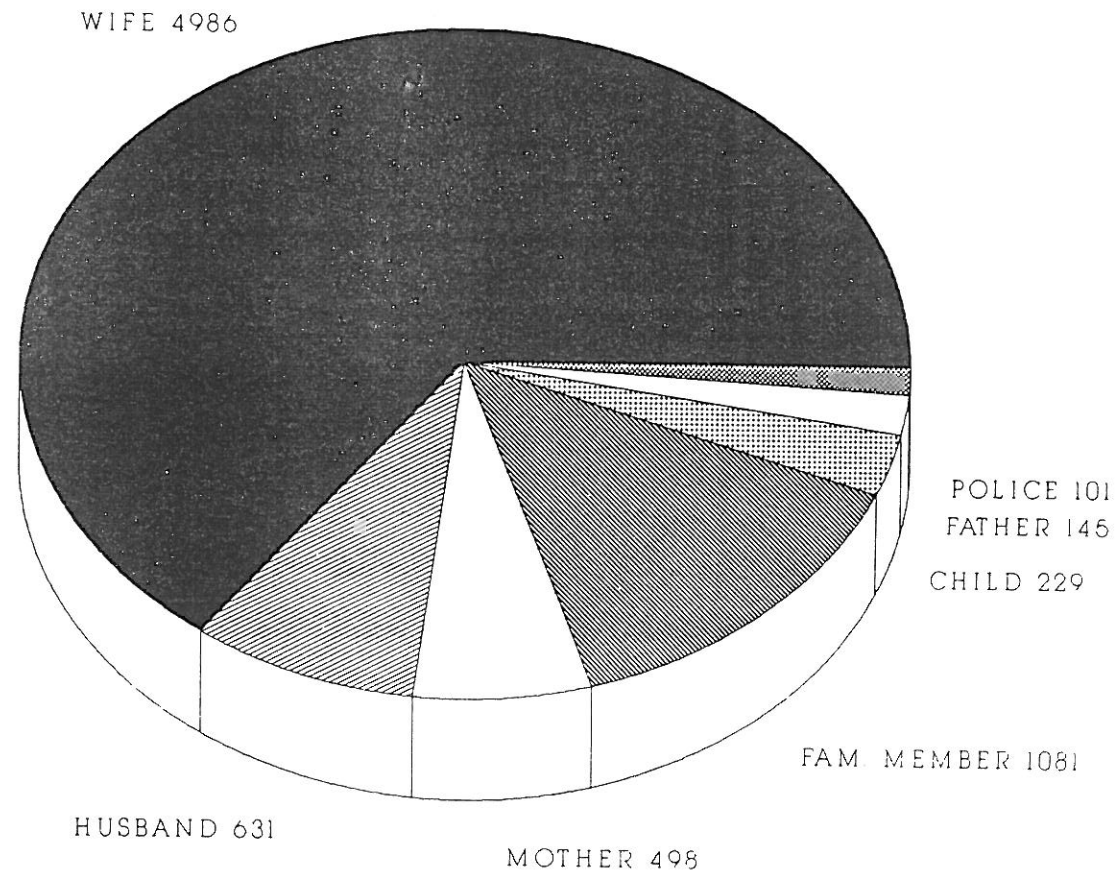


UNIFORM CRIME REPORTS DATA 1980-1990

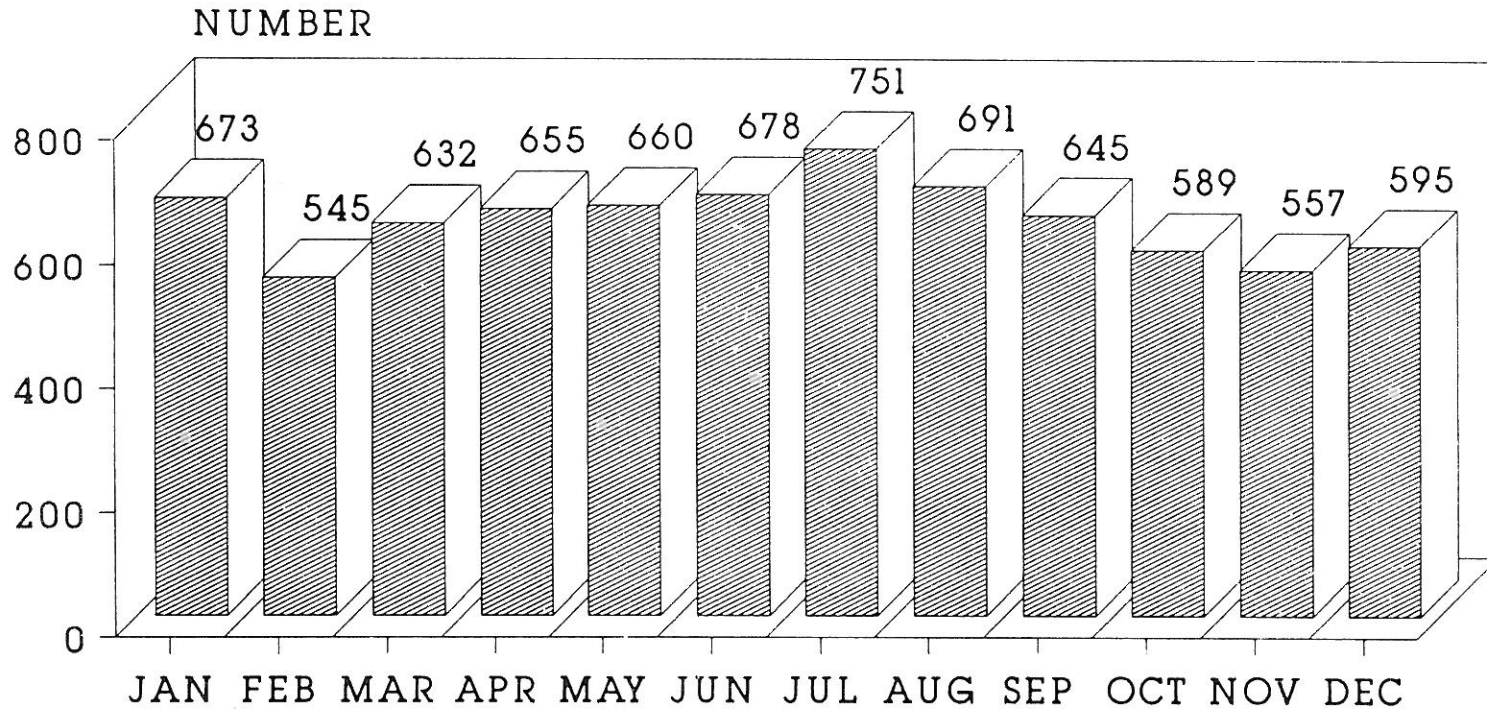


 THEFT M/V

1990 DOMESTIC VIOLENCE COMPLAINTS NUMBER FILED BY COMPLAINANT CATEGORY



1990 DOMESTIC VIOLENCE COMPLAINTS BY MONTH



COMPLAINTS
■ TOTAL

1990 DOMESTIC VIOLENCE COMPLAINTS NUMBER OF INJURIES REPORTED

