

TPD



TPD

TOLEDO

POLICE

COMMUNICATION

1991

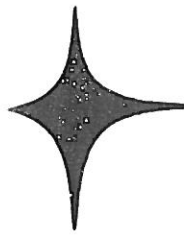
ANNUAL

REPORT

TPD



TPD



CITY OF TOLEDO OHIO



DAVID A. BOSTON
City Manager

DIVISION OF POLICE
SAFETY BUILDING
525 No. Erie Street

JOHN MASON
Chief of Police
LEADS OH0480700

C. E. Riser
Safety Director

Commissioner - Traffic Engineering

To: David A. Boston, City Manager
Through: C. E. Riser, Safety Director; Commissioner - Traffic Engineering
From: John Mason, Chief of Police
Subject: 1981 Annual Report of the Toledo Police Division

The Annual Report of the Toledo Police Division for the year 1981 is herewith submitted. This report provides a summary of the Division's activities and accomplishments.

In 1981 there were further reductions in all areas of traffic accidents, those reductions were: 3% in property damage accidents, 7% in injury accidents, 13% in fatal accidents, 17% in traffic fatalities, and 4% in the total of all accidents. In terms of human lives, the combined reduction in traffic fatalities for 1980 and 1981 is 33.67% as compared to 1979.

We experienced a slight decrease in the total calls for service in 1981 but, a close analysis of all the data revealed that there was actually an increase in the dangerous calls for service from the public; but, the internally controlled types of calls for service such as court appearances and vehicle maintenance were significantly reduced.

The Crime Stoppers Program was initiated in 1981, and the benefits so far from this program have surpassed even the expectations of those involved at its inception. There has been a definite impact on the apprehension of offenders attributable to this program.

Crime Stoppers is an example of what can be accomplished when the Police Division's two most valuable resources, the citizens of our city and the members of the division, combine their efforts to achieve the goal of reducing and controlling crime in our community.

I look back in pride upon the year 1981 as one in which the members of the Police Division, working under severe manpower shortages, maintained a level of service to the citizens of Toledo that allowed substantial reductions in traffic deaths and injuries to be made, while also dealing with a rise in those types of calls which are potentially dangerous to the responding officers.

Respectfully submitted,

John Mason
Chief of Police

TABLE OF CONTENTS

Organizational Chart — City of Toledo 1
Organizational Chart — Toledo Police Division 2

FIELD OPERATIONS BUREAU

Statistics Field Operations Bureau - Uniformed Patrol Shifts 3
Traffic Section
 1980 - 1981 Comparisons, Vehicle Crash Experience 4
 Hourly Breakdown, All Accidents in 1981 5
 Total Traffic Section Statistics 6
 Comparison Statistics - Traffic Section Personnel & Operations Personnel 6
 Breakdown of Fatal Accidents by Shifts 6
 Selective Enforcement Program (SEP) 7
 Hit Skip Unit 7
 Harbor Patrol Unit 7
 Traffic Section Financial Report 1981 8
 Total Analysis of all Accidents in 1981 by Day of Month 9

POLICE ADMINISTRATION

Internal Affairs Section 10

INVESTIGATIVE SERVICES BUREAU

Crimes Against Persons Section 11
Crimes Against Property Section 12
Youth Services Section 13
Vice/Metro Section 14

SUPPORT SERVICES BUREAU

Property Management Section 15
Communications Section 16
Regional Crime Lab 17
Record Section (I.D.) 18

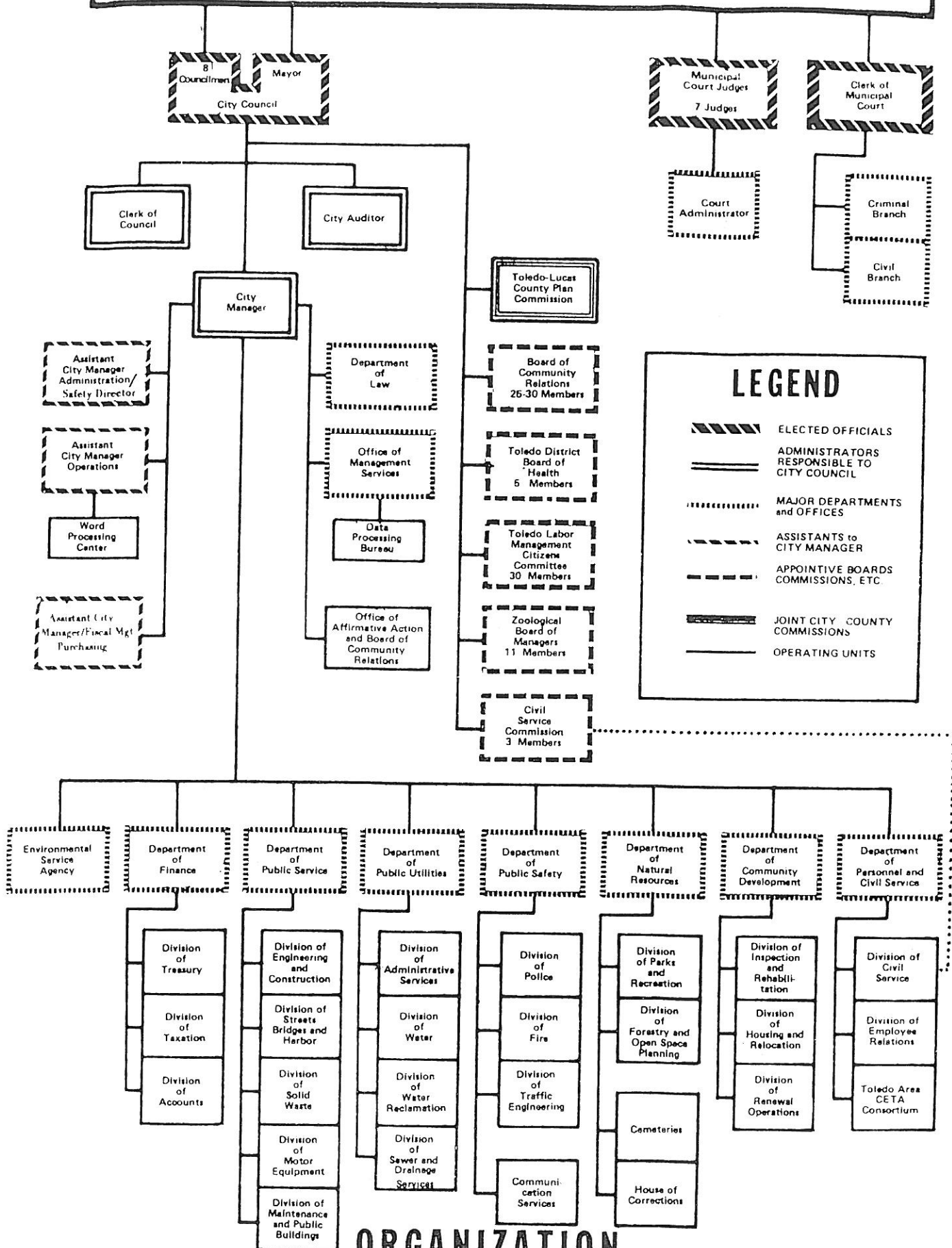
ADMINISTRATIVE SERVICES BUREAU

Community Relations Section 19
School Safety Unit 19
Community Safety Education Program (CSEP) 20
Training & Recruitment Section 21








A P P E N D I X

Comparative Workload Study A1

VOTERS

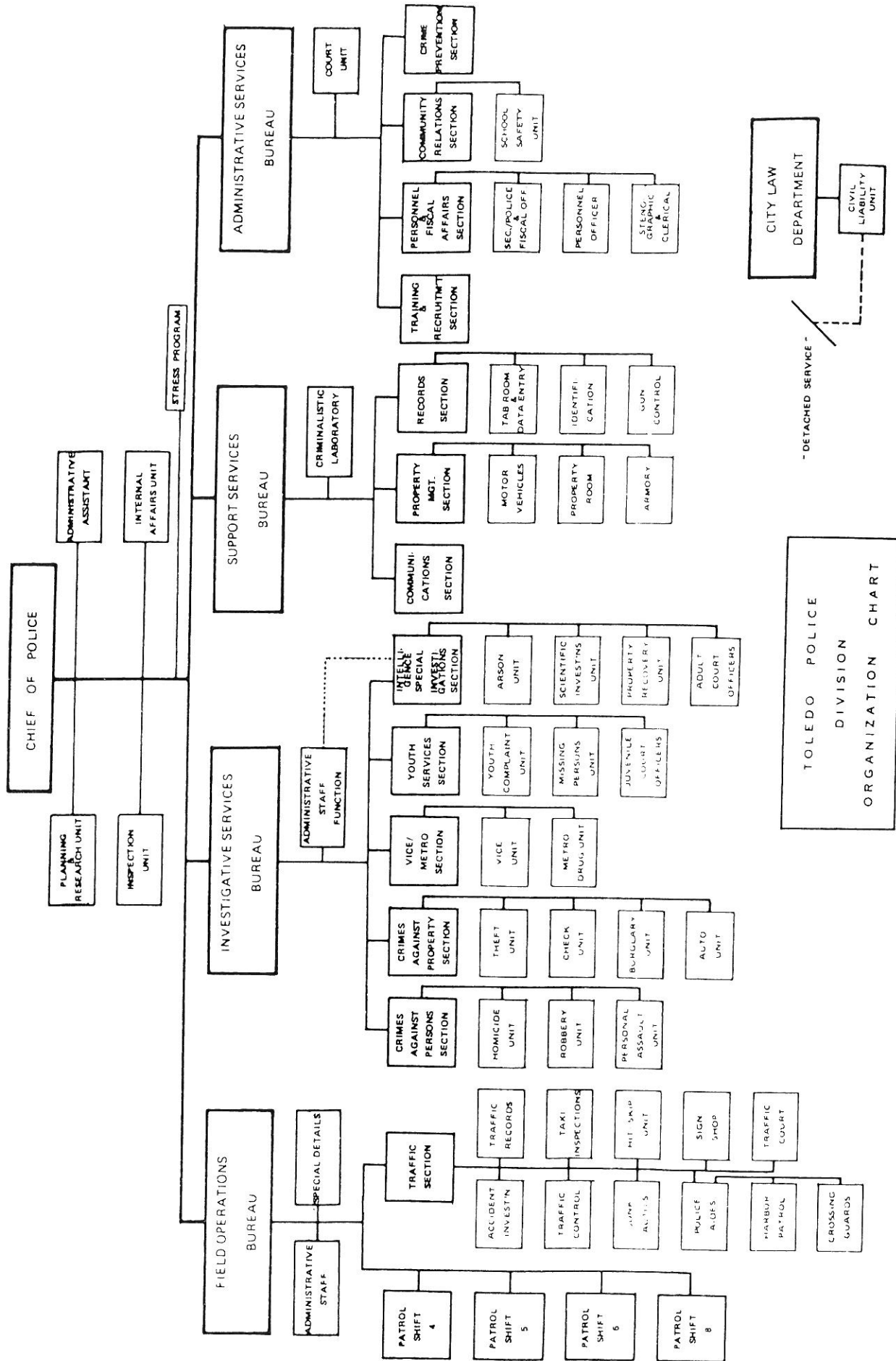


LEGEND

-  ELECTED OFFICIALS
-  ADMINISTRATORS RESPONSIBLE TO CITY COUNCIL
-  MAJOR DEPARTMENTS and OFFICES
-  ASSISTANTS to CITY MANAGER
-  APPOINTIVE BOARDS COMMISSIONS, ETC.
-  JOINT CITY COUNTY COMMISSIONS
-  OPERATING UNITS

ORGANIZATION

CITY OF TOLEDO, OHIO



TOLEDO POLICE DIVISION ORGANIZATION CHART

* DETACHED SERVICE *

F
I
E
L
D

O
P
E
R
A
T
I
O
N
S

B
U
R
E
A
U

FIELD OPERATIONS BUREAU

Uniform Patrol Units Activities

Activity	1981	1980	No. + or -	% + or -
Felony Arrests	2,581	2,560	+ 17	+ .66%
Misdemeanor Arrests	9,040	10,346	- 1,306	- 12.62%
Juvenile Arrests	1,649	1,444	+ 215	+ 14.89%
Misdemeanor Citations	1,797	871	+ 927	+ 106.43%
Warrants Served	9,688	7,168	+ 2,520	+ 35.16%

Canine (K-9) Activities

As of September 30, 1981 the K-9 function was discontinued. The following statistics compare the nine months of the unit's operation in 1981 as compared to the entire year of 1980:

	1981	1980
Tracking	32	43
Building Searches	37	134
Felony Arrests	9	31
Field Searches	9	21
Misdemeanor Arrests	15	52
Property Recovered	2	4
CFS Responded To	1,497	2,090

Misdemeanor Field Citation Program

On February 1, 1981 the minor misdemeanor citation program was expanded to include ALL misdemeanants for whom a determination could be made; that if the person were issued a citation would he be likely to appear in court. The purpose of the program was to reduce the number of persons physically booked into the Lucas County Jail.

Criteria was established to ascertain if a person should be booked, and an arrest review procedure was implemented to ensure the success of the program. The goal established was to increase the number of field citations issued by 20%.

From February 1, through December 31, 1981, 5,009 on view misdemeanor arrestees were booked into the county jail by the Toledo Police Division; and, 2,252 misdemeanants were issued field citations in lieu of booking. Therefore, 31% of all on view misdemeanants were issued citations. Prior to the implementation of this program, according to a study conducted by the Regional Planning Unit, approximately 10% of misdemeanants were issued citations.

The goal of reducing the jail population through the process of issuing field citations in lieu of booking was an unqualified success. The city of Toledo benefited from the savings in booking fees and associated costs at the jail. The police division gained additional hours of patrol time realized by reducing out-of-service time associated with transporting prisoners to the jail.

Following is a study of on view misdemeanor bookings by type of offense for the period of April through December of 1981:

Activity	Number	Percent
Driving While Intoxicated	1,154	27.41%
Disorderly Conduct/Intoxication	1,017	24.16%
Soliciting, Prostitution & Loitering	479	11.38%
All Others (weapons, assaults, etc.)	1,268	30.13%
Domestic Violence	291	6.91%
TOTAL	4,209	99.99%

MONTH	1981					1980				
	PROP DAM	INJ ACC	FATAL ACC	FATAL ITIES	TOTALS	PROP DAM	INJ ACC	FATAL ACC	FATAL ITIES	TOTALS
JAN	1,474	349	4	4	1,827	1,324	319	6	8	1,649
FEB	1,086	283	2	3	1,371	1,349	310	2	4	1,661
MAR	1,086	283	3	3	1,457	1,175	330	5	5	1,510
APR	1,076	341	2	2	1,419	1,103	373	2	2	1,478
MAY	1,098	396	3	3	1,497	1,236	411	3	3	1,650
JUN	1,120	426	3	4	1,549	1,104	423	3	3	1,530
JUL	1,124	304	2	2	1,430	1,059	429	1	1	1,489
AUG	1,073	328	3	3	1,404	1,166	404	4	4	1,574
SEP	1,154	320	1	2	1,475	1,150	322	3	3	1,475
OCT	1,286	378	5	6	1,668	1,229	367	3	3	1,599
NOV	1,066	262	3	3	1,331	1,101	311	1	1	1,413
DEC	1,431	368	4	4	1,803	1,570	384	7	10	1,961
TOTALS	14,136	4,060	35	39	18,231	14,566	4,383	40	47	18,989

In 1981 we had a reduction in ALL accident categories as compared to 1980, they are:

PROPERTY DAMAGE ACCIDENTS - A Reduction of: 3%

INJURY ACCIDENTS - A Reduction of: 7%

FATAL ACCIDENTS - A Reduction of: 13%

FATALITIES - A Reduction of: 17%

TOTAL ALL ACCIDENTS - A Reduction of: 4%

HOURLY BREAKDOWN OF ACCIDENTS FOR 1981

TIME OF DAY	DAY OF WEEK							TOTAL
	SUN	MON	TUE	WED	THU	FRI	SAT	
0001 - 0100	138	47	69	38	56	73	136	557
0101 - 0200	116	25	44	41	53	79	121	479
0201 - 0300	153	41	47	42	68	84	165	600
0301 - 0400	67	14	21	16	23	23	64	228
0401 - 0500	38	14	12	12	12	22	33	143
0501 - 0600	20	12	18	21	20	17	26	134
0601 - 0700	18	52	58	55	39	69	37	328
0701 - 0800	23	108	146	148	140	129	46	740
0801 - 0900	29	150	147	102	162	143	62	795
0901 - 1000	47	109	97	85	125	120	70	653
1001 - 1100	50	114	116	127	130	101	117	755
1101 - 1200	74	137	136	157	182	151	140	977
1201 - 1300	134	182	155	148	162	159	150	1,090
1301 - 1400	110	185	182	116	170	165	149	1,077
1401 - 1500	116	212	185	202	194	225	143	1,277
1501 - 1600	116	219	249	252	254	287	158	1,535
1601 - 1700	87	229	184	216	258	276	129	1,379
1701 - 1800	90	211	189	188	218	233	107	1,236
1801 - 1900	95	112	128	125	149	150	106	865
1901 - 2000	88	100	96	113	129	128	146	800
2001 - 2100	70	75	104	100	134	128	96	707
2101 - 2200	71	86	96	96	148	133	113	743
2201 - 2300	73	70	62	69	97	110	98	579
2301 - 2400	67	61	57	55	81	128	104	553
TOTALS	1,890	2,565	2,598	2,524	3,004	3,133	2,516	18,230

The total statistics for the Traffic Section are:

Days Worked	Specials	Regular	VTO's	Tags	Miles	Accidents Investigated
4608.5	934	3674.5	12758	11752	222,699	3,817

COMPARISON STATISTICS OF TRAFFIC SECTION PERSONNEL AND OPERATIONS PERSONNEL

<u>MOVING VIOLATIONS</u>	Number Issued	Percent Issued	<u>PARKING TAGS</u>	Number Issued	Percent Issued
TRAFFIC OFFICERS	12,758	30%	TRAFFIC OFFICERS	11,752	19%
SEP PROGRAM	6,182	14%	POLICE AIDES	40,202	61%
Total-Traffic Section	18,940	44%	Total-Traffic Section	51,954	80%
Operations Officers	23,860	56%	Operations Officers	13,848	20%
GRAND TOTALS	42,800	100%	GRAND TOTALS	65,802	100%

BREAKDOWN OF FATAL ACCIDENTS BY SHIFTS

Shift	1980 No.	1980 %	1981 No.	1981 %
0700 X 1500 Hours	9	23.1%	3	35%
1500 X 2300 Hours	8	20.5%	10	28.6%
2300 X 0700 Hours	22	56.4%	22	62.9%
2000 X 0400 Hours	16	45.7%	23	35%

SELECTIVE ENFORCEMENT PROGRAM (SEP)

During 1981 the SEP traffic officers issued a total of 6,182 citations and worked 4460.5 total manhours. For the entire seven month period of operation, man hours needed to issue each citation averaged 0.722 hours. This compares with a figure of 0.781 for the 1980 SEP. Dollar costs per citation issued was \$20.372. This was a decrease compared to the \$22.430 figure from 1980.

The citations issued were as follows:

Excessive Speed	5,507
Drivers License Violation	327
License Plate Violations	101
Equipment Violations	69
Red Light	80
Stop Sign	26
D. W. I.	14
Prohibited Turns	21
One Way Street	3
Changing Course	20
Miscellaneous	14
Total	6,182

HIT SKIP UNIT

Total Number of Hit Skip Accidents	3,842
Workable Hit Skip Accidents	1,880
Cases Cleared by Prosecution	302
Cases Cleared Without Prosecution	219
Cases Cleared Due to No Evidence or Additional Information	77
Stolen Cars - No Suspects	57
Cases Cleared - Civil Action Only	350
Cases Still Under Investigation	521
Cases, No Registration Available	113
Hit Skip Accidents Cleared by Crew on District (report fails to show completed)	36
Walk-in Accident Reports Taken	2,507
Hit Skip Accident Reports Taken by Unit	731
Citations Issued as Result of Walk-in Reports	90
Citations Issued As Result of Hit Skip Accidents	483
Total Citations Issued By Unit	573

HARBOR PATROL

Patrol Hours	1698.5
Inspection Hours	29
Maintenance Hours	742
Court Hours	4
Training Hours	205.5
Citations	30
Warnings	59
Accidents Investigated	18
Assists For: Tows, Body Recoveries, Others	182
Written Boat Inspections	57
Visual Boat Inspections	3
Incidents/complaints Investigated	237
Navigational Aid/Hazardous Condition Checks	32
Educational Contacts - Newspaper, Radio, T.V.	6

TRAFFIC SECTION 1981 ANNUAL REPORT

TAGS PAID

\$ 5.00	7,871	\$39,355.00
\$7.00	2,610	\$18,270.00
\$10.00	15,103	\$151,030.00
\$15.00	188	\$2,820.00
\$15.00	5,325	\$79,875.00
\$20.00	74	\$1,480.00
Part Pay	1,598	\$8,299.15
Total	32,769	\$301,129.15

OTHERS

Accident	16,663	\$33,418.00
Finger Print	343	\$ 1,715.00
Name Check	2,649	\$ 7,955.00
Crime Report	7,132	\$21,691.50
Photos	55	\$ 330.00
Total	26,842	\$65,109.50

Tags Paid	32,769	\$ 301,129.15
Others	26,842	\$ 65,109.50
Total	59,611	\$ 366,238.65
Refund for fingerprints- June 16, 1981		- \$ 5.00
Total		\$ 366,233.65

CREDIT CARD CHARGES FOR THE YEAR:

Master Charge/Visa = 111	\$ 1,128.00
--------------------------	--------------------

Total Revenue From Jan. 1, 1981	\$ 366,233.65
---------------------------------	----------------------

Day of Mo.	Accum. Fatal & Injury Acc. (1)	ON - STREET ACCIDENT													PERSONS KILLED OR INJURED			PRIVATE PROPERTY ACCIDENT (19)		
		FATAL ACCIDENTS				INJURY ACCIDENTS				PROPERTY DAM. ACC.					FATAL (15)	INJURY (16)	TOTAL (17)		ACCUM. (18)	
		PED. (2)	BIKE (3)	CYCLE (4)	OTHER (5)	PED. (6)	BIKE (7)	CYCLE (8)	OTHER (9)	BIKE (10)	CYCLE (11)	OTHER (12)	ACCUM. (14)	TOTAL (13)						ACCUM. (14)
1	126					5	6	9	105			3	447			576	576	576	199	110
2	269					16	6	3	117		2		478			625	1,201	1,201	209	189
3	442			1		15	10	2	145		3		545			722	1,923	1,923	235	298
4	586					13	5	4	122			2	457			603	2,526	2,526	208	380
5	712			1		11	2	14	98			1	448			575	3,101	3,101	184	454
6	865				1	10	6	7	129		4		462			618	3,719	3,719	214	529
7	983	1				6	9	4	98		1	2	441			562	4,281	4,281	156	608
8	1,117			1		8	5	11	109		1	1	455			591	4,872	4,872	188	699
9	1,251			1		9	6	9	109		1		487			622	5,494	5,494	176	792
10	1,402			1			8	12	130			2	453			606	6,100	6,100	212	860
11	1,498					5	3	4	84			3	434			533	6,633	6,633	142	932
12	1,605			2		9	7	1	88		1		428			536	7,169	7,169	158	1,006
13	1,739					7	6	7	114			1	532			667	7,836	7,836	202	1,096
14	1,841			1		8	1	7	85				461			563	8,399	8,399	136	1,147
15	1,979			2		6	3	9	117			1	415			554	8,953	8,953	200	1,221
16	2,089			1		13	5	8	83		1	6	450			566	9,519	9,519	159	1,300
17	2,238			2		16	11	4	115		1	2	558			710	10,229	10,229	211	1,366
18	2,384			1		7	9	7	122		2	4	434			586	10,815	10,815	192	1,424
19	2,554					11	9	3	147			1	653			824	11,639	11,639	253	1,488
20	2,673			1		12	6	9	90		3	2	560			684	12,323	12,323	184	1,575
21	2,802			1		9	3	11	105			1	481			611	12,934	12,934	185	1,641
22	2,962			1		10	6	11	133				475			635	13,569	13,569	196	1,701
23	3,114			1		12	8	10	121		1	1	442			596	14,165	14,165	214	1,785
24	3,250	1		1		7	9	5	113		2	2	444			584	14,749	14,749	172	1,876
25	3,373	1		3		11	8	10	93		2	3	332			460	15,209	15,209	168	1,946
26	3,493			1		11	8	4	96				364			484	15,693	15,693	166	2,014
27	3,646	1		1		7	6	4	134		1	3	440			597	16,290	16,290	221	2,084
28	3,791			1		8	11	7	118			1	515			661	16,951	16,951	204	2,159
29	3,918			1		6	9	4	107		3		363			480	17,431	17,431	174	2,230
30	4,024			3		5	2	7	89				378			484	17,915	17,915	140	2,296
31	4,095					12	8	6	45		1	2	227			315	18,230	18,230	133	2,341
Total	4,095	5		24		285	201	213	3,362		30	47	14,059			18,230	18,230	5,818	5,818	2,341
Yr. to Date	4,095	5		24		285	201	213	3,362		30	47	14,059			18,230	18,230	5,818	5,818	2,341

9 COLUMN 1 - THE TOTAL OF COLUMNS 2 THROUGH 9 COLUMN 17 - THE TOTAL OF COLUMNS 15 & 16

COLUMN 13 - THE TOTAL OF COLUMNS 2 THROUGH 12 COLUMN 18 - THE ACCUM. TOTAL OF COLUMN 17

COLUMN 14 - THE ACCUM. TOTAL OF COLUMN 13 COLUMN 19 - THE ACCUM TOTAL OF PRIVATE PROP ACCS

(

(
E

A
E
M
I
M
I
S
T
F
A
T
I
C
M

INTERNAL AFFAIRS SECTION

	CITIZEN COMPLAINT INVESTIGATIONS			DIVISION INITIATED INVESTIGATIONS		
	1979	1980	1981	1979	1980	1981
JANUARY	13	25	15	11	7	14
FEBRUARY	4	10	17	4	6	7
MARCH	14	15	14	7	4	17
APRIL	13	10	12	6	8	17
MAY	20	10	11	6	9	16
JUNE	14	15	14	3	6	13
JULY	12	17	16	12	7	9
AUGUST	15	19	20	6	13	11
SEPTEMBER	4	8	10	6	10	12
OCTOBER	7	14	15	10	24	8
NOVEMBER	16	16	25	15	7	3
DECEMBER	3	9	8	6	15	5
TOTALS	135	168	171	94	116	132

Total number of Citizen Investigations (1981) = 171 (Increase of 3 over 1980)

Total number of Division Investigations (1981) = 132 (Increase of 16 over 1980)

Total Investigations (1979) = 229

Total Investigations (1980) = 284

Total Investigations (1981) = 303

I
N
V
E
S
T
I
G
A
T
I
V
E

S
E
R
V
I
C
E
S

B
U
R
E
A
U

**INVESTIGATIVE SERVICES BUREAU
CRIMES AGAINST PERSONS SECTION**

For the year 1981, the Crimes Against Persons Section received a total of 11,562 complaints for investigation. This is a decrease of 7.3 % from 1980.

By virtue of their seriousness, all homicides, robberies, and sexual assaults are assigned for investigation. In addition, all other cases coming to this section are reviewed by a unit supervisor and selectively assigned for investigation.

The comparisons between 1981 and 1980 are as follows:

	1981	1980	Numerical Change	Percentage Change
<u>HOMICIDE UNIT</u>				
Homicides	55	60	- 5	- 8%
by Firearm	37	28	+ 9	+ 21%
All other Cases	*8,471	9,625	- 1,154	- 12%
<u>ROBBERY UNIT</u>				
All Robberies	1,733	1,784	- 54	- 3%
Financial Institutions	16	25	- 9	- 36%
<u>PERSONAL ASSAULT UNIT</u>				
Rapes & Attempted Rapes	276	248	+ 28	+ 11%
All Other Cases	*1,027	695	+ 332	+ 47%
<u>SCIENTIFIC INVESTIGATION UNIT</u>				
<u>Polygraph Unit</u>				
Examinations Scheduled	276	354	- 78	- 28%
Examinations Administered	192	235	- 43	- 22%
No Shows or Refused	84	119	- 35	- 41%
<u>Evidence Technician Unit</u>				
Total Assignments	679	*857		
Crime Scene Assignments				
Latent Fingerprint Search	574	537		
Photo Assignments	470	431		
Neutron Activation Analysis Tests	51	41		
Moulage Casts	4	8		
Other	169	182		

*Part of the change in the 1981 Homicide and Personal Assault Units was due to a transfer of Telephone Harrassment complaints from Homicide to Personal Assault. This type of complaint generally averages between 350 and 400 cases per year.

*April to December only

INVESTIGATIVE SERVICES BUREAU
 CRIMES AGAINST PROPERTY SECTION

SPECIAL UNIT

Complaints Received	21,232
Grand Theft	2,946
Petit Theft	11,440
Criminal Damage/Miscellaneous	6,800
Complaints Assigned	1,485
Letter Mailed	3,202
Exceptional Clearances	3,105
Unfounded	34
Arrests	2,679

BURGLARY UNIT

Complaints Received	10,242
Assigned Complaints	3,581
Arrests	551
Exceptional Clearances	570
Changes	242
Unfounded	96

CHECK UNIT

Complaints Received	4,617
Complaints Assigned	1,740
Arrests	567
Exceptional Clearances	577
Warrants Issued by Prosecutor	2,759

AUTO UNIT

Complaints Received	2,698
Complaints Assigned	970
Grand Theft Autos	1,800
Miscellaneous Complaints	1,005
Arrests	191
Exceptional Clearances	37

YEARLY REPORT ARSON UNIT

Total Assignments	899
Arsons Investigated	352
Adults Arrested	53
Juveniles Arrested	20

YOUTH SERVICES SECTION

Offense	Cited To Court		Cases Adjusted		ADULT ARRESTS	Exceptionally Cleared Complaints	Inactive & Unfounded Complaints	Extra Clearance
	Boys	Girls	Boys	Girls				
Arson & Related Offenses	97	11	195	20	10	161	360	13
Homicide & Assault	155	86	209	93	22	475	318	17
Kidnapping & Extortion	0	0	0	0	2	15	13	0
Narcotics	14	5	15	7	0	1	3	0
Offenses Against Family	217	379	384	697	87	80	43	11
Offenses Against Justice	2	2	0	2	2	0	0	2
Offenses Against Public Peace	59	23	283	119	12	53	48	11
Robbery Burglary Trespassing	163	7	68	8	13	16	214	832
Sex Offenses	3	3	1	0	2	1	1	2
Theft & Fraud	298	47	171	20	19	132	1,822	125
Weapons Control	7	0	3	0	0	0	1	1
Miscellaneous Offenses	7	1	1	0	2	0	3	0
TOTAL	1,022	564	1,330	966	171	934	2,825	1,014

Grand Totals	1,586	2,296	171	934	2,825	1,014
---------------------	--------------	--------------	------------	------------	--------------	--------------

1980	1,586	2,205	154	992	2,988	78
1979	1,736	2,365	130	1,082	3,209	135
1978	1,680	3,177	159	898	3,637	249
1977	1,464	3,152	156	1,083	3,703	285

VICE - METRO SECTION

During 1981, the Vice Unit investigated and made numerous arrests in the areas of prostitution, gambling, liquor, and drug abuse. The Metro Drug Unit continued its war on drug abuse and seized over one million dollars of illegal drugs. The Vice Unit and the Metro Drug Unit were separate units until October of 1981 when a reorganization caused them to merge.

As can be seen in the following table, even with a reduction in manpower, most investigative areas show increased activity. Assistance was obtained from state and federal investigative agencies and officers from the uniform bureau were used in several drug enforcement cases.

VICE UNIT	1980	1981	Numerical Change	Percentage Change
Prostitution Arrests	855	880	+ 25	+ 2.92%
Gambling Arrests	39	27	- 12	-30.77%
Liquor Arrests (Includes citations)	88	111	+ 23	+26.14%
Drug Related Arrests	47	133	+ 86	+186.98%
Miscellaneous Arrests	309	189	-120	-238.83%
ARREST TOTALS	1,524	1,584	+60	+ 3.94%
License Applications Processed	230	209	-21	- 9.13%

METRO DRUG UNIT

Drug Arrests	408	407	-1	- 0.24%
Search Warrants	102	80	-22	-21.57%
Drugs Seized-Dollar Amount	\$771,140	\$1,082,771	+\$311,631	+40.41%
TOTAL CASES	293	329	+36	+12.29%

Notes:

Includes liquor licenses, arcade licenses, phrenologist licenses.

S
U
P
P
O
R
T

S
E
R
V
I
C
E
S

B
U
R
E
A
U

PROPERTY MANAGEMENT SECTION

STATISTICS

	1981	1979	+ or -	+ or - %
Total Fleet Mileage	4,922,990	4,240,701	+ 682,289 mi.	+13.85%
Gasoline Consumption	407,340 gal	550,624 gal.	- 143,284 gal.	- 26%
Accidents Involving Police Vehicles.	192	233	- 41	- 17.59%

INVENTORY OF POLICE VEHICLES

	1	.Crime Lab Van
	1	.Mobile Command Post
	1	.Harbor Patrol Van/Back-Up Command Post
	1	.Undercover Van (Vice/Narcotics Unit)
	14	.Police Patrol Wagons
	5	.Marked Jeeps
	2	.Three Wheel Motorcycles
	89	.Marked Police Cars
	87	.Unmarked Police Cars
	4	.Marked 4-Wheel Drive Vehicles
	2	.Police Boats
	1	.Bomb Trailer
Total Fleet.....	208	

ARMORY INVENTORY

740	.Assorted Handguns
176	.Shot Guns
36	.Carbines
17	.Rifles
17	.Gas Guns

POLICE AUCTIONS

Three auctions were held in 1981 bringing a total of \$18,535.00 to the General Fund.

COMMUNICATIONS SECTION

Area of the City of Toledo:	87 Sq. Mi
Estimated Population of the City of Toledo:	354,0
Total Incoming Telephone Calls for 1981:	375,9
Calls Answered Within 25 Seconds:	367,0
Calls to Recorder (after 25 seconds):	8,9
Calls Abandoned by Calling Party:	4,2

OF THE TOTAL INCOMING CALLS, 97.62% WERE ANSWERED IN 25 SECONDS.

ACTIVITIES OF EACH RELIEF	0600 X 1400	1400 X 2200	2200 X 0600	TOTAL FOR YEAR
Answered Calls for Service (Mobile Units)	73,000	121,881	118,709	313,590
Answered Calls for Service (Compared to 1980)	Decrease Of 3,312	Decrease Of 666	Decrease Of 1,557	Decrease Of 5,535

THERE WAS AN OVERALL DECREASE OF 1.77% IN CALLS FOR SERVICE IN 1981

	1981 TOTAL	1980 TOTAL	
18 HOUR PARKING CHECKS	4,610	4,969	DECREASE OF 359
TARTA CHECKS	3,955	3,165	INCREASE OF 790
PARK CHECKS	4,243	4,121	INCREASE OF 122

IN 1981 THERE WERE 4,214 CALLS FOR SERVICE FOR WHICH THERE WERE NO MOBILE UNITS AVAILABLE TO SEN

TOLEDO POLICE DIVISION - REGIONAL LABORATORY

GENERAL ANALYTICAL CHEMISTRY	CASES	EXHIBITS
Petroleum Product	19	44
Soil	1	1
Glass	6	11
Paint	6	15
Miscellaneous	8	49
SEROLOGICAL		
Semen	128	243
Blood	114	153
MICROSCOPY		
Hairs and Fibers	20	50
FIREARMS - TOOLMARKS		
Gunshot Residue	6	10
Comparison	47	106
N.A.A. (F.B.I.)	3	8
Mechanical Operation	180	199
Toolmarks	12	45
Miscellaneous	27	34
DRUG CHEMISTRY		
Marijuana	211	1,068
Drugs	423	7,326
ALCOHOL		
B.A.C.	367	370
Liquor	29	44
MISCELLANEOUS	22	314

REGIONAL DATA
(All data included above)

AGENCY	CASES
University of Toledo Police	1
Lucas County Coroner	414
Lucas County Sheriff	36
Lucas County Work Release	23
Sylvania Township Police	1
Sylvania City Police	6
U.S. Coast Guard	1
Waterville Police	1
Lake Township Police	11
Perrysburg Police	4
Maumee Police	11
Northwood Police	1
Oregon Police	7
Jerusalem Township Police	1
Toledo Metro Park	13
Washington Township Police	1
Lucas County Prosecutor	2
Ohio Department of Natural Resources	4
Holland Police	1
Totals	542

1981 SUMMARY

ANALYSIS TYPE	CASES	EXHIBITS
General Analytical Chemistry	40	120
Serological/Microscopy	262	446
Firearms Identification	275	402
Drug Chemistry	634	8,394
Alcohol Determination	396	414
Miscellaneous	30	339
Total	1,637	10,115

Cases received from regional law enforcement agencies = 542
 Cases received from Toledo Police Division = 1,095

Laboratory personnel received 196 court subpoenas in 1981.

RECORD SECTION ANNUAL REPORT 1981

REPORTS DESK

Expeditor Board Reports: 14,533
 Watch House Cards: 174
Total Reports Processed: 85,713

Reports Microfilmed: 84
 Other Microfilm: 6
Total Microfilm: 90

ARREST/ WARRANT DESK

Warrant Grace Letters: 16,464
 Letters Returned-Bad Address: 3,001
Total Summoned- 11,980

New Warrants Processed:

Local Warrants: 16,041
 Outside Warrants: 207
Total Warrants: 16,248

Warrants Withdrawn/Returned:

Local Warrants: 3,813
 Outside Warrants: 251

TOTAL WARRANTS WITHDRAWN: 4,064

TOTAL ARRESTS PROCESSED: 10,830

RECORDS DESK

Dispositions Posted:
 Juveniles: 0
 Muni Court: 0
 Grand Jury: 0
 Common Pleas: 0

Total Dispositions: 0

Record Checks:

Lucas County Prosecutor: 1,539
 Jury Lists: 3,903
 Notary Public: 1,005
 Pretrial Release: 0
 Muni Probation: 3,267
 City of Toledo Employee: 0
 Board of Education: 549
 Other Unpaid Checks: 4,537
 Other Paid Checks: 1,611

Total Record Checks: 16,411

Expungements Of Records: 652

GUN CONTROL DESK:

Total I.D. Photocards Processed: 8,602

AUTO DESK:

Stolen Autos Processed: 1,845
 Recovered Stolen Autos: 1,594
 Vehicles Sold at Auction: 25

Auto Towed:

District Number 1: 1,855
 District Number 2: 3,226
 District Number 3: 1,367
 District Number 4: 1,727
 District Number 5: 1,037
 Kasle Iron - Junks: 12
 Heavy Duty Tows: 81

Total Autos Towed: 9,305

MAIL CLERK DESK:

Total Incoming Mail: 36,197
 Incoming Letters Processed: 2,869
 Outgoing Letters Typed: 293
 Insurance Reports Copied: 5,479
 Settlement of Claims Letters: 2,512

NORIS ENTRIES AND INQUIRES:

Warrant Entries: 16,248
 Arrest Entries: 12,430
 A.T.L. Entries: 2,038
 RID Entries: 532*
 Transfers: 185*
 Cancellations: 17,541
 Modifications: 29,059
 Inquires: 226,021
 Other: 45,991

Total NORIS: 349,955

IDENTIFICATION:

Fingerprint Processing: 20,845
 Film Processed: 2,019
 Contact Photos: 752
 Enlargements: 5,126
 Latent Prints: 237
 Miscellaneous Functions: 7,202

INCOME RECEIVED:

Income Received-Gun Control: \$28,830.00
 Income-Insurance Reports: \$21,691.50
 Income-Record Checks: \$ 7,955.00
 Income-Police Auction: \$13,430.00
 Income-Identification: \$ 2,045.00

Total Income: \$73,501.50

* Count for November & December Only.

A
D
M
I
N
I
S
T
R
A
T
I
V
E

S
E
R
V
I
C
E
S

B
U
R
E
A
U

POLICE COMMUNITY RELATIONS SECTION

		1980 Activity	1981 Activity	Numerical Change	Percentage Change
Invitation to Understanding	Programs	408	257	- 151	- 50%
	People	21,666	18,152	- 3,514	- 37%
Special Presentations	Programs	104	53	- 51	- 49%
	People	6,735	11,506	+ 4,771	+ 71%
Public Talks	Talks	152	28	- 124	- 82%
	People	4,206	N/A	N/A	N/A
Meetings		256	161	- 95	- 37%
Liaison Contacts		378	312	- 66	- 17%
School Related Complaints		451	297	- 154	- 34%
Citizen Complaints		663	364	- 299	- 45%
Referrals		N/A	152	N/A	N/A
Surveillances		425	898	+ 473	+ 111%
Arrests & Assists		37	27	- 10	- 27%

SCHOOL SAFETY UNIT

		1980 Activity	1981 Activity	Numerical Change	Percentage Change
Staffing		3	1	- 2	- 67%
Safety Assemblies	Programs	529	324	- 205	- 39%
	Students	50,212	52,365	+ 2,153	+ 4%
Safe - T - City		524	585	+ 61	+ 12%
Patrol Leadership Camp		96	84	- 12	- 13%
Meetings		52	32	- 20	- 38%
Complaints		121	31	- 90	- 74%

COMMUNITY SAFETY EDUCATION PROGRAM

(CSEP)

	1980 Activity	1981 Activity	Numerical Change	Percentage Change
Man Hours Expended on CSEP Program	2,946.5	2,560	- 386.5	- 13%
Bicycle Rodeos	10	9	- 1	- 11%
Bicycle Violation Citations Issued	4,861	5,236	375	+ 8%
Bicycle Violation Warnings Issued	913	596	- 317	- 35%
Bicycle Court Session Hearings	102	76	- 26	- 25%
Persons Cited For Bicycle Violations	1,936	1,942	+ 6	+ .03%
Bicycle Checks (Inspections)	2,231	1,895	- 336	- 15%
Persons Contacted During Program	16,930	11,210	- 5,720	- 34%
Bicycle Traffic Crashes	187	181	- 6	- 3%
Man Hours Per Citation Issued	.606	.489	- .117	- 19%
Cost Per Citation Issued	\$ 11.698	\$ 9.906	- \$1,792	- 15%

TRAINING & RECRUITMENT SECTION

	1978	1979	1980	1981	No. + or -	% + or -
Total Number of Training Programs Involved	N/A	20	36	42	6+	14%+
In-Service Training (Man Hours)	21,830	13,149	16,348	19,020	2,672+	14%+
Special Training (Man Hours)	2,584	3,954	3,084	11,075	7,991+	72%+
Roll Call Training (Man Hours)	0	0	335	1,846	1,511+	82%+
Other Training (Man Hours)	1,467	10,436	68	161	93+	58%+
Assistance To Outside Agencies	240	2,192	244	2,044	1,804+	88%+
Total Annual Man Hours	26,121	29,731	20,075	34,146	14,071+	41%+
Section Staffing Levels	7	6	4.5	3.75	- .75	- 20%
Productivity Per Member (Man Hours)	3,731.6	4,955	4,461.2	9105.6	4,644.4+	51%+
Man Days Lost Time (Illness - Injury)	N/A	77	5	0	- 5	500%-
Ratio Of Training Staff To Division Personnel	1 : 105	1 : 139	1 : 145	1 : 167	+ 22	13%+

