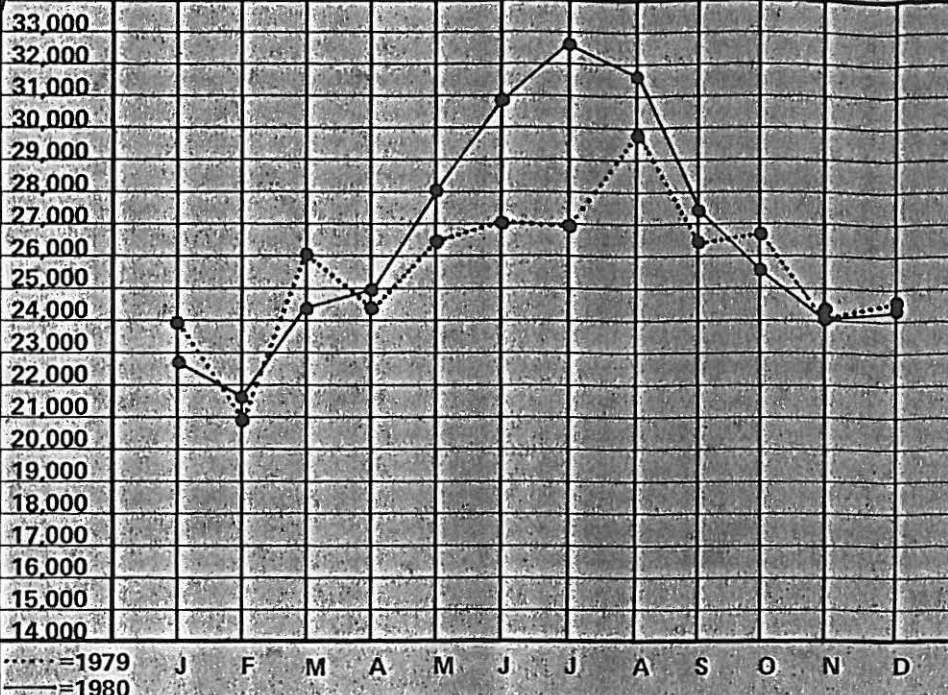


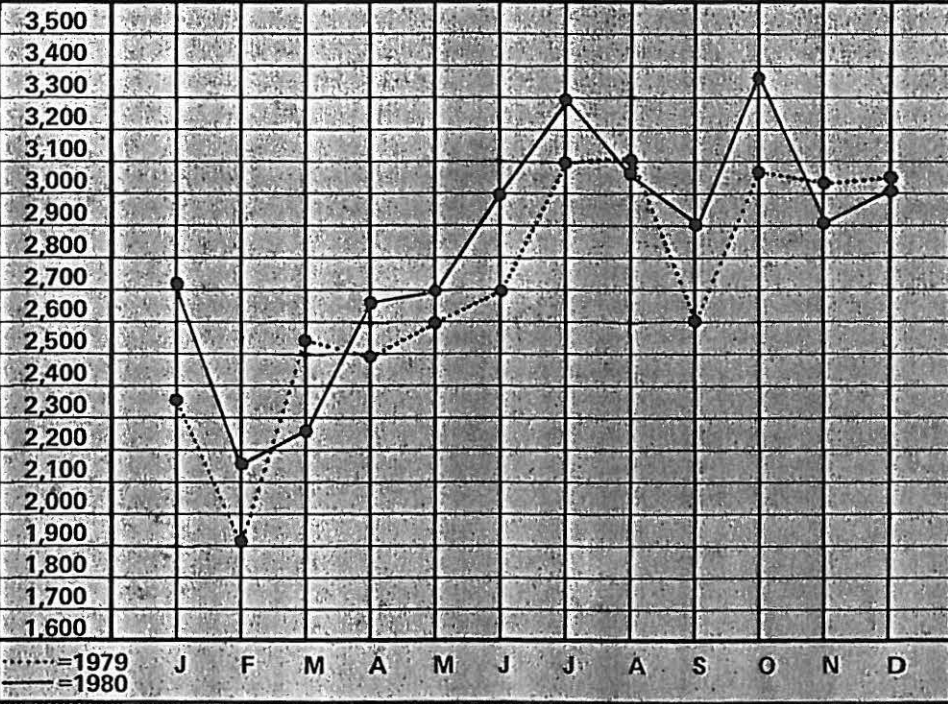
1980

ANNUAL REPORT TOLEDO

CALLS FOR SERVICE



CRIMES REPORTED



POLICE DIVISION

CITY OF TOLEDO OHIO



J. MICHAEL PORTER
City Manager

DIVISION OF POLICE
SAFETY BUILDING
525 No. Erie Street

JOHN MASON
Chief of Police
LEADS OH0480700

DAVID A. BOSTON
Assistant City Manager
Safety Director

To: J. Michael Porter, City Manager
Through: David A. Boston, Assistant City Manager/Safety Director
From: John Mason, Chief of Police
Subject: 1980 Annual Report of the Toledo Police Division

The Annual Report of the Toledo Police Division for the year 1980 is herewith submitted. This report provides a summary of the Division's activities and accomplishments.

In 1980 we had a reduction of 16.7% in traffic fatalities, and a 7.1% reduction in the number of total accidents. We feel that these reductions reflect the impact that the Selective Enforcement Program had. This program, funded by a federal grant, operated from February through September. Traffic officers worked 5,483 overtime hours and issued a total of 7,020 citations while working this program.

There was an overall increase of 3.6% in the Calls For Service, and a 4.4% increase in the number of Crimes Reported. These increases occurred while we were experiencing a 4.2% decrease in the number of sworn officers.

Since assuming command of the division I have reorganized all of the major areas within the police operations in an effort to compensate for the decreasing manpower. As a result, twenty-eight sworn officers formerly assigned to the various bureaus were placed into street assignments. Realizing that the city and the police division will continue to see manpower losses due to the economic climate we are facing, I will continue to review the overall operations of this division to ascertain that the level of officers on the street remains at the level necessary to deliver adequate police service to the citizens of Toledo.

Basic to the role of the police division is the involvement and participation of vast numbers of people. Our division's most valuable resources are the members of the division and the citizens of our city. Together we share a common goal of reducing and controlling crime in our city.

We reflect upon the year 1980 only long enough to come to the realization that the many accomplishments and innovations are but the foundation upon which to build. It will be our foremost task to continue to build upon this keystone. The men and women of the Toledo Police Division, with the cooperation and support of the citizenry, shall endeavor to keep Toledo the kind of place where people are comfortable living, working, or visiting.

Respectfully submitted,

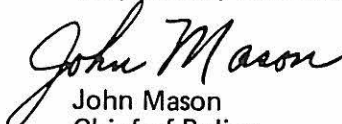

John Mason
Chief of Police

TABLE OF CONTENTS

POLICE ADMINISTRATION

Organizational Chart — City of Toledo	1
Organizational Chart — Toledo Police Division	2
Schools and Seminars Attended by Police Division Personnel.	3
Personnel Data	4
Distribution of Personnel Chart	5
Inspections Unit	6
Internal Affairs Section	7

FIELD OPERATIONS BUREAU

Field Operations Bureau	8
Canine Unit	8
Traffic Section	
Fatal Accident Data.	9
Hit Skip Unit	10
Police Aides	10
Harbor Patrol Unit.	11
Comparison Statistics- Traffic Officers/Field Operation's Officers.	12
Taxi Cab and Towing Companies Enforcement	12
1979 - 1980 Comparison, Vehicle Crash Experience.	13
1979 - 1980 Comparison, All Accidents.	14
Selective Enforcement Program (SEP) Statistics	15
Tabulation of Voided Parking Tickets	16
Traffic Section 1980 Financial Report.	18

SUPPORT SERVICES BUREAU

Planning and Research Unit.	19
Property Management Section	20
Record Section	
1979 - 1980 Comparison of Major Functions	21
1979 - 1980 Comparison of Record Section Income.	23
Identification Unit.	24
Crime Lab	25
Communications Section	28

INVESTIGATIVE SERVICES BUREAU

Crimes Against Persons Section	29
Metro Drug Unit	29
Crimes Against Property Section	30
Special Investigations Section	31
Vice Narcotics Section	32
Yearly Arrest Statistics.	33
Youth Services Section	
Juveniles Cited to Court.	35
Disposition Statistics	36
Missing Persons Unit	43
Bicycles Recovered, Referrals, Recovered Property Value	44

TABLE OF CONTENTS

ADMINISTRATIVE SERVICES BUREAU

Police Community Relations Section. 45
School Traffic Safety Unit 46
Training and Recruitment Section 47
Crime Prevention Section 47

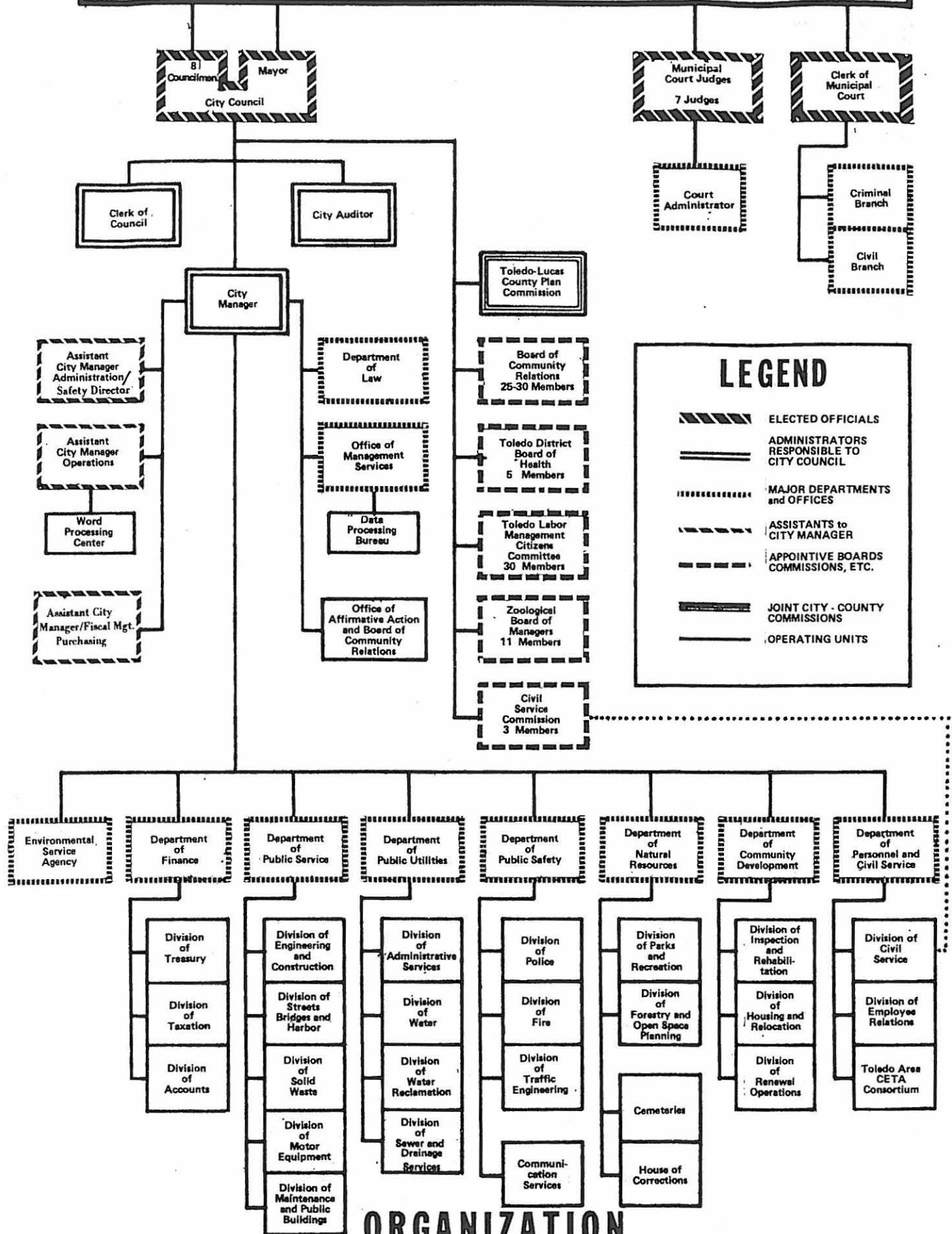
A P P E N D I X

Police Strength Compared to Workload Changes A-1
Five Year Graph of Persons Booked A-2
Comparative Workload Study - Five Year Comparison A-3
1979 - 1980 Comparison Graphs - Crimes Reported, Calls For Service, Clearances A-4
Adult Arrests - By Age and Sex A-5
Adult Arrests - By Race A-9
Juvenile Arrests - By Age, Sex and Race. A-13
Conversion Chart - Census Tracts to Reporting Areas A-16
Calls For Service - 1980 Compared With 1979 and the Seven Year Average. A-17

P
O
L
I
C
E

A
D
M
I
N
I
S
T
R
A
T
I
O
N

VOTERS



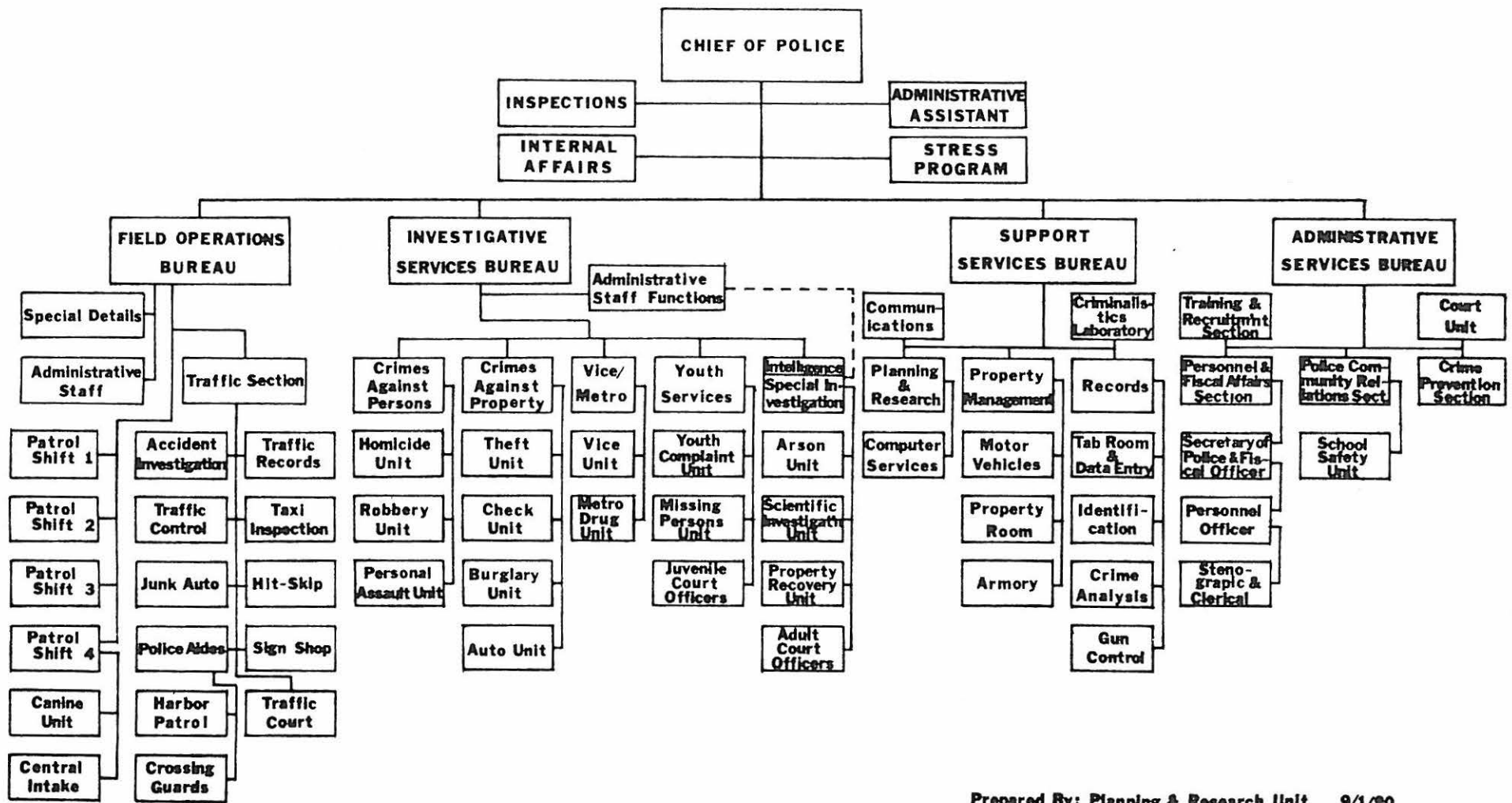
LEGEND

- ELECTED OFFICIALS
- ADMINISTRATORS RESPONSIBLE TO CITY COUNCIL
- MAJOR DEPARTMENTS and OFFICES
- ASSISTANTS to CITY MANAGER
- APPOINTIVE BOARDS COMMISSIONS, ETC.
- JOINT CITY - COUNTY COMMISSIONS
- OPERATING UNITS

ORGANIZATION

CITY OF TOLEDO, OHIO

2



Prepared By: Planning & Research Unit 9/1/80

TOLEDO POLICE DIVISION ORGANIZATION CHART

SCHOOLS AND SEMINARS ATTENDED IN 1980

PERSONNEL FROM	DATES	COURSE	LOCATION
Civilian Crime Lab Director	2/20 to 2/24	American Academy of Forensic Sciences Seminar	New Orleans, Louisiana
Civilian from Records	4/2 to 5/7	Office Skills Seminar	Toledo, Ohio
3 Officers from Traffic	4/23 to 4/25	1980 Marine Patrol Symposium	Dellroy, Ohio
1 Officer from I.D.	5/18 to 5/23	Advanced Fingerprinting Course	London, Ohio
1 Officer from S.I.U.	5/18 to 5/23	Advanced Fingerprinting Course	London, Ohio
1 Officer from H.D.G.	5/24 to 5/31	Bomb Technicians Training	Albuquerque, N.M.
1 Civilian from Chief's Office	6/4 to 6/25	Office Skills Seminar	Toledo, Ohio
1 Officer from Planning & Research	8/5 to 8/7	Motivation & Discipline Seminar, and Communications Through Objectives Seminar	Chicago, Illinois
Safety Director	9/28 to 9/30	Midwest Regional Arson Seminar	Chicago, Illinois
1 Officer from Record Section	10/6 to 10/10	Fingerprint School	London, Ohio
1 Officer from Planning & Research Unit	10/12 to 10/24	Police Planning Officers Seminar	Evanston, Illinois
1 Civilian from Administrative Services	10/22 to 11/26	Office Skills Seminar	Toledo, Ohio
1 Officer from H.D.G.	12/8 to 12/9	Hazardous Devices Seminar	Akron, Ohio
Deputy Chief-Support Services Bureau	11/11 to 11/14	Privacy Law & Law Enforcement Records Seminar	Cincinnati, Ohio
1 Officer from Records	12/8 to 12/9	Standardized Crime Reporting Seminar	Columbus, Ohio

PERSONNEL INFORMATION FOR 1980

PROMOTIONS

To Chief

John Mason 6/01/80

To Deputy Chief

John Mason 3/01/80

Richard McAtee 6/02/80

To Captain

James Greenwood 3/01/80

Robert Marti 6/02/80

Benjamin Cooley 11/19/80

To Lieutenant

Richard Koperski 3/01/80

Louis Borucki 3/01/80

William Holmes 6/01/80

James Matthews 7/22/80

Ronald Spann 11/19/80

To Sergeant

Robert Dietrich 2/15/80

Richard Murphy 2/15/80

Carl Anderson 7/22/80

Lawrence Knannlein 11/19/80

RESIGNATIONS

Clint McBee 2/29/80

Joseph Skonecki 4/11/80

Edwin Kane 4/20/80

Richard Mann 5/01/80

Morris Jackson 5/06/80

Allan Lohner 8/06/80

Armando Bahr 8/15/80

Kenneth Reau 9/16/80

Michael Sewell 11/21/80

DEATHS

Ronald Sakall 10/12/80

DISMISSED

Jay R. Smith 4/18/80

Thomas Sandlin 4/18/80

REINSTATED

William Shinaver 6/20/80

DEMOTIONS

To Lieutenant

J. B. Moore 10/01/80

DISTRIBUTION OF PERSONNEL CHART

This chart shows the assignment of all personnel, both sworn and civilian as of:

JANUARY 1981

The figures are gathered from the Personnel Unit and may not agree with the Monthly Assignment Sheet.

	ADMINISTRATIVE STAFF				FIELD OPERATIONS BUREAU								INVESTIGATIVE SERVICES BUREAU						SUPPORT SERVICES BUREAU					ADMINISTRATIVE SERVICES BUREAU					Total Division																	
	Special Assignments	Administrative Assistant	Internal Affairs Unit	Inspections Unit	Total Personnel	% of Personnel	Special Assignments	Administrative Staff	Patrol Shift No.4	Patrol Shift No.5	Patrol Shift No.6	Patrol Shift No.8	Central Intake Unit	Traffic Section	Total Personnel	% of Personnel	Administrative Staff	Crimes Against Persons	Crimes Against Property	Vice/Narcotics Section	Youth Services Section	Special Investigations	Total Personnel	% of Personnel	Communications Section	Planning & Research	Property Management	Records Section	Criminallistics Lab	Total Personnel	% of Personnel	Personnel/Fiscal Affairs	Court Unit	Training/Recruitment	Community Relations	Crime Prevention Sect.	Total Personnel	% of Personnel	PERCENT OF THE TOTAL DIVISION	NUMBER OF PERSONNEL TOTAL DIVISION						
Chief of Police					1	.15																																			.15	1				
Secretary of Police																																										1	1	.15	.15	1
Deputy Chief of Police							1							1		.15	1						1	.15						1	.15											1	1	.15	.60	4
Captain			1		1	.15	1	1	1	1	1		1	6		.90	1	1	1	1	1	1	5	.75	1	1	1		3	.35	1		1	1		3	.35	1	1	1		3	.35	2.71	18	
Lieutenant		1	1	2	4	.60		5	5	5	1	1	1	18		2.71	1	1	2	1	1	6	.90	4	1		3	8	1.20		1		1		2	.30	1		1		2	.30	5.71	38		
Sergeant	2		2		4	.60	1	10	11	11	2		4	39		5.86	6	7	3	7		23	3.46	13	1	1	5	20	3.01	1	1	2	2		6	.90	1	1	2	2	6	.90	13.83	92		
Patrol Officer							3	107	95	96	39	32	372	55.94			20	23	18	20	3	84	12.63	19	1	6	16	42	6.32	2		1	8	2	13	1.95	2		1	8	2	13	1.95	76.84	511	
Total Sworn Officers	2	1	4	2	10	1.50	3	3	123	112	113	43	1	38	436	65.56	1	28	32	24	29	5	119	17.89	37	4	7	25	74	11.13	5	2	4	12	2	26	3.91	100. +	665							
Mgr. Criminallistics Lab																												3	3	5.96											5.96	3				
Criminallist 1 & 2																												1	1	1.85											1.85	1				
Supervisor/Data Control																																							1.85	1						
Cashier 1													1	1	1.85																								1.85	1						
Clerk 3																												1	1	1.85											1.85	1				
Secretary					1	1.85																																	1.85	1						
Auto Equip. Serviceman 1																										2		2	3.70											3.70	2					
Tab Operator 2																												1	1	1.85											1.85	1				
Group Worker																										1		1	1.85											1.85	1					
Police Aide													8	8	14.81																								14.81	8						
Steno 2																																														
Clerk 2																												1	1	1.85											1.85	1				
Police Technician													2	2	3.70	2				2		4	7.41			9		9	16.67											27.78	15					
Keypunch Operator																										5		5	9.26											9.26	5					
Steno 1																										3	1	4	7.41	1					1	1.85					1	1.85	9.26	5		
Clerk 1													3	3	5.56											4		4	7.41											14.81	8					
Clerk Aide																										1		1	1.85											1.85	1					
Total Civilian					1	1.85							14	14	25.93	2				2		4	7.41			3	26	4	33	61.11	1					1	1.85	100. +	54							
Total Sworn + Civilian	2	1	4	2	11	1.53	3	3	123	112	113	43	1	52	450	62.59	3	28	32	24	31	5	123	17.11	37	4	10	51	4	107	14.89	6	2	4	12	2	27	3.76	100. +	719						

INSPECTION UNIT ACTIVITIES – 1980

The Inspection Unit, through research and several meetings with the law department and the various clerks of courts, determined that police officers, under certain circumstances, are entitled to witness fees. A Special Order (80-2) was formulated by inspections personnel, which outlines the procedures for obtaining witness fees.

Below are listed the various courts, and the amounts collected from each in witness fee payments to police officers in 1980:

Common Pleas Court\$ 8,996.00
Juvenile Court\$ 2,895.00
Grand Jury.\$ 7,770.00
Municipal Court (State Charges).\$12,936.00
Miscellaneous courts (out of town, etc.).\$ 1,254.00

The money collected in witness fees is deposited into the General Fund of the City of Toledo. The Inspection Unit continues to closely monitor the witness fee collection, and if a witness fee is due and not received, steps are taken obtain payment.

A continued daily monitoring of Prosecutor Pre-Trial overtime payment continues to show a decrease of approximately \$300.00 daily as compared to the amount which was paid daily in the year 1979. This is an ongoing function of Inspections in conjunction with the newly formed Court Unit.

Inspection Unit personnel visited Cincinnati and Dayton, Ohio to observe their police department's procedures relative to the following areas:

1. Detective operations - how officers are assigned, working hours, etc..
2. Handling of light duty assignments
3. Deployment of vehicles
4. Staffing and functions of inspection units
5. Programs and procedures dealing with accidents involving city vehicles

Also, in 1980 inspections were completed on the workload of, and/or the overtime payment generated for the following units:

1. Arson Unit
2. Harbor Patrol
3. Junk Auto Detail
4. City of Toledo, Treasury Division (Toledo Police Officers assigned)

Daily monitoring of the following continues as an ongoing function of this unit:

1. All overtime generated by the Toledo Police Division. If an error is found on an overtime report, either before or after computation, it is corrected.
2. Monitor apparant abuses of sick and disability time.
3. Problems associated with completed crime reports (legibility, content etc.) Corrective action is taken when problems are discovered.

When this unit receives correspondence from officers pointing out problems, or furnishing information, every effort is made to assist and correct the problems referred to. The officer requesting assistance is always notified as to what action was taken.

In September of 1980, the Inspection Unit began work on compiling lists of duties and responsibilities of all command officers of the Police Division. There were several meetings held with the command officers in all areas of the division, and their input was requested. This is a continuing project and, at this time it is not felt that it will be completed and implemented in the near future. When complete, this should allow for a better understanding of a command officer's duties and responsibilities, and a means of showing accountability.

INTERNAL AFFAIRS SECTION
1980 REPORT

During the year 1980 the Internal Affairs Section was responsible for investigating 52 complaints filed by citizens. The section, in addition, conducted 116 intra-departmental investigations.

The section also assisted both shift and bureau command with an additional 116 citizen complaints. This assistance took the form of both record keeping and consultations.

During 1980, considerable time was spent by Internal Affairs investigators handling disciplinary hearings. This section has the responsibility of representing the Division at hearings before the Chief of Police, Safety Director appeals, Civil Service appeals, and finally in the Lucas County Common Pleas Court. A total of 36 hearings before the Chief of Police were held during 1980. Statistics for the other hearings were not maintained.

The Internal Affairs Section was called on by both the Chief of Police and the city Law Department to conduct several major investigations. These investigations were very time consuming and required many man hours of all investigators assigned to the section.

The above statistics fail to reflect another area of responsibility that consumes considerable time for this section. Requests are received by this section from outside police agencies for assistance with investigations these agencies are conducting. This assistance took the form of conducting interviews, making background checks and accompanying outside agency investigators while they were in Toledo.

Again in 1980, as in preceding years, the section became a sounding board for both members of the division that felt they were being forced to work under unreasonable conditions and regulations; and by members wanting rules and regulations clarified in greater detail. The officers were being given several different interpretations as to what was required for conformance. This "sounding board" type of service is a time consuming function but, it is felt that the time spent will prevent infractions that would consume greater amounts of time if disciplinary action were required.

	CITIZEN COMPLAINT INVESTIGATIONS			DIVISION INITIATED INVESTIGATIONS		
	1978	1979	1980	1978	1979	1980
JANUARY	14	13	25	1	11	7
FEBRUARY	7	4	10	3	4	6
MARCH	13	14	15	10	7	4
APRIL	14	13	10	5	6	8
MAY	16	20	10	2	6	9
JUNE	21	14	15	3	3	6
JULY	14	12	17	0	12	7
AUGUST	22	15	19	1	6	13
SEPTEMBER	11	4	8	3	6	10
OCTOBER	18	7	14	3	10	24
NOVEMBER	16	16	16	1	15	7
DECEMBER	5	3	9	6	6	15

Total number of Citizen Investigations — 168 (increase of 33 over 1979)
 Total number of Division Investigations — 116 (increase of 22 over 1979)
 Total Investigations 1978 - 209
 Total Investigations 1979 - 229
 Total Investigations 1980 - 284

F
I
E
L
D

O
P
E
R
A
T
I
O
N
S

B
U
R
E
A
U

FIELD OPERATIONS BUREAU

TOLEDO AREA REGIONAL TRANSIT AUTHORITY (TARTA) SPECIAL

The TARTA Special program implemented in July 1979 to provide increased surveillance for TARTA bus routes, was continued through 1980. A special two-man unit from the 2000 X 0400 shift was assigned daily to this task. This unit monitors the TARTA radio frequency, provides surveillance on selected bus routes, boards busses and discusses problems with the drivers, and checks busses on their routes. The unit reported 18,301 bus checks, 12 vandalism reports and 10 arrests for bus related incidents during the year.

PATROL UNITS ACTIVITIES

The following activities were reported by the three rotating shifts and the 2000 X 0400 shift for the year 1980, as compared to the previous year:

ACTIVITY	1980	1979	+ or -	+or- %
Felony Arrests	2,564	2,179	+ 385	+ 17.7%
Misdemeanor Arrests	10,346	8,428	+ 1,198	+ 22.8%
Juvenile Arrests.	1,444	1,427	+ 17	+ 1.2%
Misdemeanor Citations.	871	585	+ 286	+ 48.9%
Warrants Served	7,168	4,793	+ 2,375	+ 49.6%
TARTA Checks.	27,092	16,600	+10,492	+ 63.2%
Parks Checks	11,217	6,693	+ 4,524	+ 67.6%

K-9 ACTIVITIES

In 1980 there were four man//dog teams assigned to the Canine operation, one team being a sergeant. The officers assigned to canine participated in the Community Development Crime Prevention Grant Program during the year. Canine units were also involved in public relation activities associated with the Safe-T-City Program, and with various youth groups.

The following activities were reported as compared to the previous year:

ACTIVITY	1980	1979	+or-	+or- %
Trackings.	43	59	- 16	- 27.1%
Building Searches	134	189	-55	- 29.1%
Felony Arrests	31	60	- 28	- 48.3%
Field Searches.	21	24	- 3	- 12.5%
Misdemeanor Arrests	52	80	- 28	- 35.0%
Property Items Recovered.	4	13	- 9	- 69.2%
Calls Responded To.	2,090	3,823	- 1,733	- 45.3%

FATAL ACCIDENT STATISTICS FOR 1980

DATE	TIME	LOCATION	PERSON(S) KILLED
1 - 07 - 80	1525	Monroe & Secor	Driver
1 - 12 - 80	0233	2913 N. Detroit	Driver
1 - 12 - 80	1555	Clay & Harvey	Driver-Minibike + 1 Passenger
1 - 22 - 80	0726	Front & Main	Pedestrian
1 - 22 - 80	1755	I-280 & Front	Driver + 2 passengers
2 - 09 - 80	0150	99 Fearing	3-Passengers
2 - 13 - 80	0030	900 Columbus	Driver
3 - 09 - 80	0014	Byrne & Muirfield	Driver
3 - 11 - 80	0234	City Park & Nebraska	Driver
3 - 11 - 80	2345	Harvey & Manhattan	Driver
3 - 13 - 80	0240	Tremainsville & Westbrook	Driver
3 - 13 - 80	2100	3524 Willys	Driver
4 - 04 - 80	1930	Douglas & Gracewood	Pedestrian
4 - 15 - 80	0815	1007 Front	Bicyclist
4 - 19 - 80	1430	3200 Glendale	Driver (Died 5-09-80)
4 - 26 - 80	1340	Summit & Walnut	Pedestrian (Died 6-09-80)
5 - 05 - 80	0830	Huron & Jackson	Pedestrian (Died 5-27-80)
5 - 24 - 80	2230	2400 S. Reynolds	Driver (Died 5-27-80)
5 - 27 - 80	0820	Alexis & Benore	Driver
6 - 29 - 80	1740	839 Willow	Pedestrian (Died 7-09-80)
7 - 23 - 80	0530	Holland Sylvania & Nebraska	Motorcyclist
8 - 11 - 80	0120	Dorr & Elysian	Passenger
8 - 15 - 80	1145	409 Eastern	Pedestrian
8 - 22 - 80	2330	Garrison & Sylvania	Driver
8 - 27 - 80	0425	1330 Laskey	Passenger
9 - 04 - 80	0136	I-75 & Dorr	Driver
9 - 14 - 80	0005	Angola & Reynolds	Driver
9 - 23 - 80	0130	Front & Main	Driver (Died 9-25-80)
10 - 14 - 80	1515	5263 Harvest	Pedestrian
10 - 15 - 80	2345	2100 Lagrange	Motorcyclist
10 - 16 - 80	0255	N. Detroit & Wagonner	Driver
11 - 19 - 80	2345	Monroe & 19th.	Driver
12 - 09 - 80	0615	I-475 & I-75	Driver
12 - 14 - 80	0225	Dorr & Richards	Passenger
12 - 17 - 80	1120	Cheyenne & Southwyck	Driver
12 - 18 - 80	0140	Bancroft & Monroe	2 - Drivers
12 - 21 - 80	0340	Phillips & Conrail RR	Driver + 1 Passenger
12 - 23 - 80	0235	900 S. Detroit	Driver + 1 Passenger
12 - 29 - 80	1300	Angola & Reynolds	Unborn fetus of driver

TOTALS

Fatal Accidents.....	39
Total Persons Killed.....	47
Drivers.....	25
Passengers.....	12
Pedestrians.....	7
Motorcyclists.....	2
Bicyclist.....	1

HIT SKIP UNIT

1980 STATISTICS

Total number of hit-skip accidents reported	4,087
Total number of workable hit-skip accidents.	1,937
Total number of traffic citations issued	768
Traffic citations resulting from hit-skip accidents.	645
Traffic citations resulting from from walk-in accident reports	123
Hit-skip accidents solved with a traffic citation	368
Hit-skip accidents solved without a traffic citation.	235
Hit-skip accidents solved by "Civil " action only	306
Hit-skip accidents with no evidence or additional information	176
Hit-skip accidents involving stolen cars or plates	73
Unsolved fatal hit-skip accidents.	0
Incorrect incidents, reclassified as other than hit-skip accidents	19
Registration not in file - not in B.M.V..	121
Workable hit-skips still under investigation (carry overs into 1981)	53
Hit-skip accidents, with no disposition.	586
Walk-in accident reports (non-hit skips)	1,608
Walk-in hit skip accident reports.	656
Total walk-in reports	2,264
School bus complaints-all warnings	3

POLICE AIDE UNIT - 1980 STATISTICS

ASSIGNMENT	NUMBER OF TIMES
School Corners	426
Traffic Specials	233
Special Assignments	65
Light Duty.	1,248 hours
Sick Time Used (in hours).	732.50
Sick Family Hours Used (in hours)	110
Vacation Days Used.	133.50
Excused Absence (days)	13
Overtime Or Optional Holiday (days)	16
Leave of Absence (hours)	126

HARBOR PATROL UNIT

1980 STATISTICS

MAN HOURS WORKED	TOTAL MAN HOURS
Patrol Hours	1,948
Inspection Hours	54
Maintenance Hours	1,154
Court Hours	20
Educational Contact Hours	72
Training Hours	48

PATROL CONTACTS	TOTAL
Citations & Arrests	21
Warnings	122
Accident Investigations (State Form Only).	31
Assists.	141
Written Boat Inspections.	9
Visual Boat Inspections	10
Boat Rental Checks (No. of boats)	0
Incidents or Complaints Investigated.	134
Navigational Aid/Hazardous Condition Checks.	34

EDUCATIONAL CONTACTS	TOTAL
Schools	1
Organizations (Estimated audience 200,000)	32
Media: Newspaper, Radio, TV	4
General Information	12

SCHEDULE OF IMPORTANT EVENTS

- April 1980 Preparations for the 1980 boating season begun.
The harbor patrol dock scheduled for replacement.
Officers assigned to the unit attended a symposium in Delroy, Ohio.
- May 1980 Officers assigned to the unit conducted "Low Water Hazards" classes for Fire Division.
- June 1980 The new dock was constructed.
- July 1980 The unit was called upon by the F.A.A. to assist in the investigation of fatal airplane crash.
- August 1980. . . Recovery of stolen property, and apprehension of suspects.
- September 1980 .No unusual incidents.
- October 1980. . .Assisted in preparations for visit of Vice President Walter Mondale.

COMPARISON STATISTICS OF TRAFFIC SECTION AND OPERATIONS SHIFTS PERSONNEL

MOVING VIOLATIONS	NUMBER ISSUED	% ISS'ED
Traffic Officers	19,248	16%
S.E.P.	7,020	14%
TOTAL TRAFFIC SECTION	19,248	39%
Operations Officers	31,138	61%
GRAND TOTAL	50,386	100%
PARKING TAGS		
Traffic Officers	11,331	16%
Police Aides	48,198	65%
TOTAL TRAFFIC SECTION	59,529	81%
Shift Officers and all Others	14,738	19%
GRAND TOTAL	74,267	100%

TRAFFIC OFFICER ASSIGNED TO THE CITY OF TOLEDO LICENSE BUREAU

Enforcement report for the year 1980:

Miles Traveled	5,785
Stops Made	1,974
Treasury Escorts	75
Total Monies Collected for License Bureau	\$21,140.00
Total Monies in Treasury Escorts	\$146,279,000.00
Tow Truck Inspections	337
Tow Truck Violations	36
Tow Truck Revocations (No Insurance).	11
Taxi Cab Inspections	370
Taxi Cab Owners Transfers	9
Taxi Cab Replacement Vehicles	43
Taxi Cab Lease Agreements	4
Taxi Cab Permits (New)	15
Taxi Cab Change of Companies	8
Taxi Cab Escrow Permits Activated.	1
Taxi Cab Operators License Revoked	9
Taxi Cab Permits Revoked	1
Taxi Cabs Taken Off Road (Unsafe)	19
Taxis Inspected on Lift.	19
Taxi Cab Permits Suspended	2
Taxi Cab Application Forgeries (Toledo Municipal Court).	2
Arrests, Bench Warrants, (No Operators License).	4
Notices transmitted for insurance policies, renewals, cancellations, applications.	750

VEHICLE CRASH EXPERIENCE IN 1980 COMPARED TO 1979

1980

1979

Month	Property Damage	Injury Accidents	Fatal Accidents	Fatali- ties	TOTALS	Property Damage	Injury Accidents	Fatal Accidents	Fatali- ties	TOTALS
January	1,324	305	5	8	1,649	1,844	420	3	3	2,267
February	1,349	312	2	4	1,661	1,549	395	2	2	1,946
March	1,175	335	5	5	1,509	1,364	379	6	6	1,749
April	1,103	375	4	4	1,478	1,342	402	5	7	1,749
May	1,236	414	3	3	1,650	1,398	417	4	4	1,819
June	1,099	426	1	1	1,530	1,311	467	3	3	1,781
July	1,037	431	1	1	1,489	1,108	363	2	2	1,473
August	1,147	408	4	4	1,574	1,290	471	2	2	1,763
September	1,135	325	3	3	1,475	1,136	439	4	6	1,579
October	1,222	370	3	3	1,599	1,462	472	8	9	1,942
November	1,098	312	1	1	1,413	1,642	457	2	2	2,101
December	1,569	391	7	10	1,961	1,525	414	4	4	1,945
TOTALS	14,494	4,423	39	47	18,989	16,972	5,097	45	50	22,114

In 1980 we had a reduction in all accident categories from 1979, they were as follows:

PROPERTY DAMAGE	A REDUCTION OF 6.85%
INJURY ACCIDENTS	A REDUCTION OF 7.56%
FATAL ACCIDENTS	A REDUCTION OF 7.50%
FATALITIES	A REDUCTION OF 16.67%
TOTAL ACCIDENTS	A REDUCTION OF 7.08%

SELECTIVE ENFORCEMENT PROGRAM IN 1980

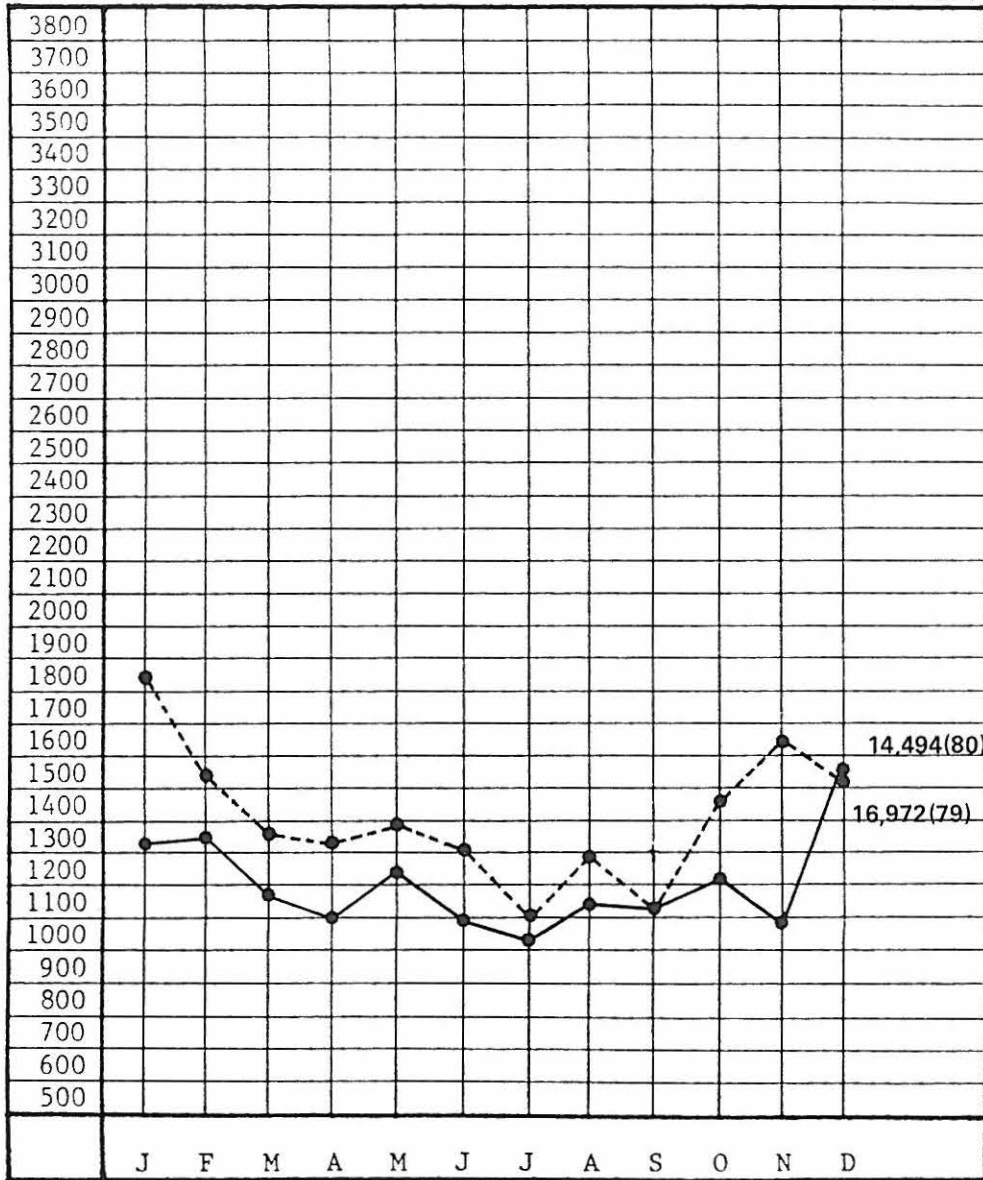
(Program was funded February 1, 1980 through September 30, 1980)

VIOLATION	FEB	MAR	APR	MAY	JUN	JUL	AUG	SEP	TOTALS
Speeding	468	849	808	898	750	760	911	834	6,278
No Drivers License	27	66	47	53	41	56	42	46	378
Equipment Violations	12	41	16	11	7	16	25	15	143
Red Light	16	16	17	14	5	9	13	13	103
D. W. I.	2	1	1	1	1	1	2	1	10
Stop Sign	7	3	2	3	0	5	2	6	28
Pro Turn	1	3	0	1	6	4	2	0	17
One Way Street	3	2	0	0	1	3	0	1	10
Resisting	1	0	0	0	0	0	0	0	1
Miscellaneous	1	12	5	1	4	2	2	3	30
Changing Course	2	11	2	2	2	2	1	0	22
TOTALS	540	1,004	898	984	817	858	1,000	919	7,020

TOTAL MAN HOURS WORKED= 5,483

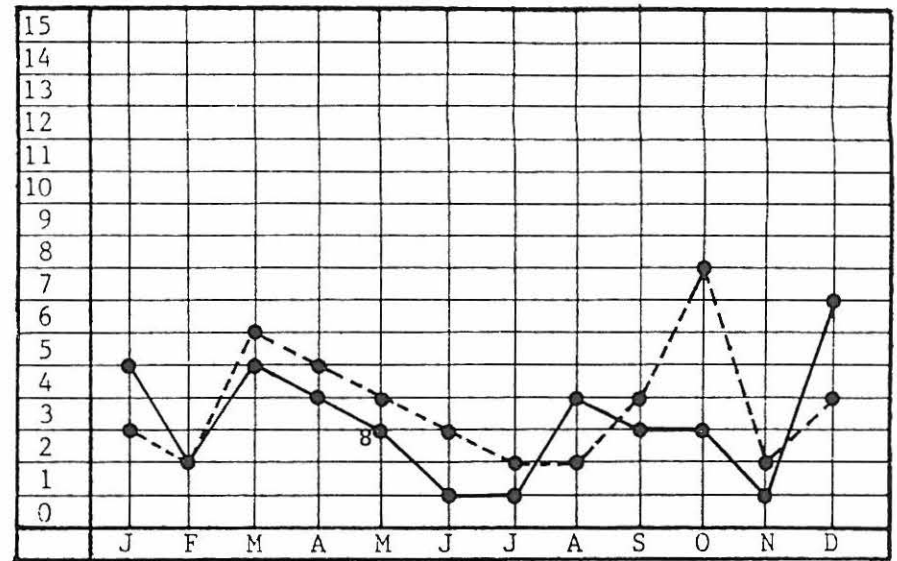
MAN HOURS PER CITATION= .781

Total
For Year

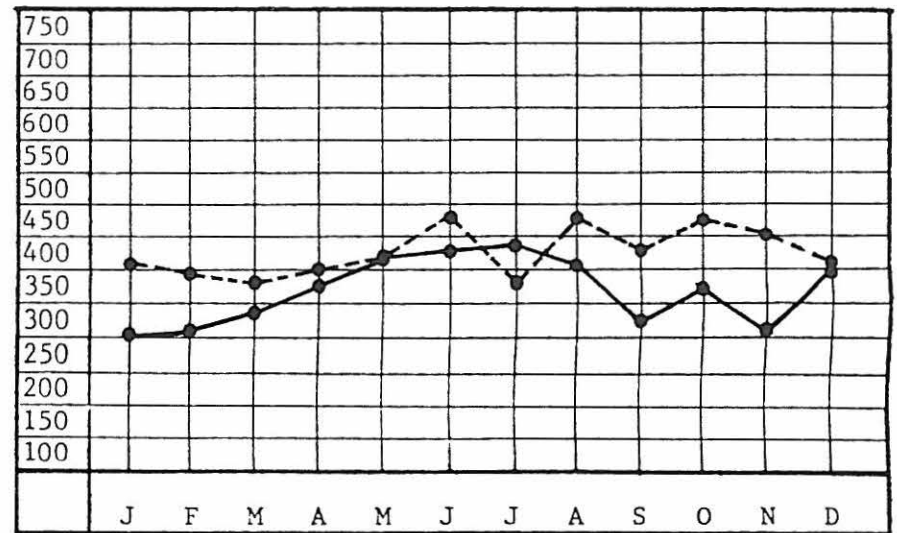


PROPERTY DAMAGE ACCIDENTS

—●— 1980
- - -●- - 1979



FATAL ACCIDENTS



INJURY ACCIDENTS

TABULATION OF VOIDED PARKING TICKETS

CITY VEHICLES

	<u>METER</u>	<u>Restricted Zone</u>
Health Department	468	55
Taxation	0	2
Municipal Court Baliff	1	14
Division of Water.	0	1
Division of Parks	1	11
Commisioner of Inspections	1	10
Traffic Engineers Office	0	1
Board of Community Relations	17	4
Civil Service	3	1
Data Processing.	5	2
Solid Waste	1	0
Pollution Control	0	0
Personnel Director.	0	2
Treasurer	1	8
Mayor and City Council	13	67
Commissioner of Public Buildings.	0	2
Commissioner of Streets.	0	1
Management Services	0	1
City Managers Office	9	5
City Prosecutors Office.	2	3
Miscellaneous city vehicles	67	104
Fire Division.	0	7
Forestry Division.	1	0
Urban Renewal.	0	1
Safety Director.	2	1
City Mail Car	0	1
Public Utilities	0	1
Utility Emergency.	2	13
Zoo	0	1
City Law Department.	3	4

COURT TICKETS

Officer in Court	1,636	448
----------------------------	-------	-----

OTHER GOVERNMENT AGENCIES

F.B.I. & A.T.F., Etc.	129	100
Armed Forces.	55	27
Lucas County Adult Probation.	0	1
Lucas County Sheriff.	6	4
Lucas County Prosecutor	26	8
Lucas County Coroner	0	0
Lucas County Children's Services	55	7
Internal Revenue.	0	0
Immigration & Naturalization	1	0
U.S. Postal Service.	24	11
State of Ohio	3	2
Lucas County Juvenile Court.	26	13
C.E.T.A.	10	6
Community Development.	5	7
U.S. Marshall	2	2
Consumer Protection	2	5
Economic Planning	2	0
Lucas County Mail Car.	0	1
Affirmative Action	1	0

TOTALS	4,107	3,175
-------------------------	--------------	--------------

GRAND TOTAL.		7,282
-----------------------------	--	--------------

TABULATION OF VOIDED PARKING TICKETS

REASON FOR VOIDANCE

	Meter Tickets	Restricted Zone
Defective Meter.	937	0
Driver Returned With Change	10	0
Tagged Twice For Same Violation	54	100
Sign Placed After Vehicle Parked	5	23
Vehicle Broken Down	71	307
Stolen Vehicle	40	37
Passenger Car in Loading Zone.	10	128
Time Allowed For Hotel Parking	0	0
Incomplete Information	26	140
Wrong Location on Ticket.	2	12
Wrong Make Vehicle	37	140
Wrong License Number.	17	72
Wrong Time/Date	7	12
Wrong Violation	7	30
No Violation Marked	126	0
No Violation	119	884
Defaced Ticket	21	134
Private Property	1	0
Officer Error in Reading Sign.	2	34
Incomplete Set of Tickets	1	1
Clergy	1	5
Medical	8	111
Deceased	4	30
Driver Arrested For Other Charge.	1	0

TABULATION OF TICKETS THAT WOULD BE VOIDED UNDER ANY CIRCUMSTANCES

(Included in the above listed voidances)

Defective Meter.	937	0
Tagged Twice For Same Violation	54	100
Sign Placed After Vehicle Parked	5	23
Vehicle Broken Down	71	307
Stolen Vehicle	40	37
Incomplete Information	26	140
Wrong Make Vehicle	37	140
Wrong License Number.	17	72
Wrong Time/Date	7	12
Wrong Violation	7	30
Defaced Ticket	21	134
Private Property	1	0
Officer Error in Reading Sign.	2	34
Deceased	4	30
No Violation	119	884
TOTALS	1,348	1,943
GRAND TOTAL		3,291

TRAFFIC SECTION
1980
ANNUAL FINANCIAL REPORT

TAGS PAID			OTHERS		
\$ 5.00	<u>9,334</u>	<u>\$ 46,670.00</u>	ACCIDENT	<u>13,656</u>	<u>\$27,414.50</u>
\$ 7.00	<u>4,335</u>	<u>\$ 30,345.00</u>	TOW	<u>87</u>	<u>\$ 2,349.00</u>
\$10.00	<u>19,305</u>	<u>\$193,050.00</u>	FING'RPRINT	<u>223</u>	<u>\$ 1,115.00</u>
\$15.00	<u>10,115</u>	<u>\$151,725.00</u>	NAME CHECK	<u>2,879</u>	<u>\$ 8,636.00</u>
\$15.00	<u>84</u>	<u>\$ 1,260.00</u>	CR. REPORTS	<u>4,854</u>	<u>\$14,435.00</u>
\$20.00	<u>86</u>	<u>\$ 1,720.00</u>	PHOTOS	<u>63</u>	<u>\$ 384.00</u>
PART PAY	<u>1,805</u>	<u>\$434,185.00</u>	TOTALS	<u>21,762</u>	<u>\$54,334.00</u>
			TAGS PAID	45,064	\$434,185.00
			OTHERS	21,762	\$ 54,334.00
			TOTALS	66,826	\$488,519.00

CREDIT CARD CHARGES FOR THE YEAR

MASTER CHARGE/VISA 289 \$3,114.00

TOTAL REVENUE FROM JANUARY 1, 1980 \$ 488,519.00

S
U
P
P
O
R
T

S
E
R
V
I
C
E
S

B
U
R
E
A
U

PLANNING AND RESEARCH UNIT

Renovation of the Safety Building

The planning staff had been assigned to coordinate the construction efforts for the Police Division during the renovation of the Safety Building. The project was completed in 1980 with every area of police operations in the building either relocated in new space or having their same areas renovated.

Although it still was not possible to relocate all police operations into the Safety Building, the division did pick up some space which was formally occupied by other city offices. In the final report to the Chief of Police regarding the completion of the project the planning staff made the point that in the opinion of the personnel from the unit assigned to the project the Police Division still lacked sufficient space in the building to do the proper job.

Closing of the Scott Park Facility as a Field Operations Base

Due to the decreasing level of manpower the police administration found it necessary to abandon the Scott Park facility as Field Operations District Station. The planning unit assisted in the phasing out of the operations, and the relocation of the personnel, vehicles and some of the equipment to the safety building.

Proposed Use of Present City Offices By The Police Division

The planning was started almost immediately on the proposed police use of the remainder of the Safety Building when the city offices are moved to the new City - County - State Building.

Throughout the year the planning unit is involved in the following types of areas:

- * Preparation of Special and Administrative Orders
- * Preparation of Additions to the Division Manual.
- * Research Concerning Improvement of Division Operations.
- * Answering Questionnaires From Other Agencies.
- * Maintaining a Research Library For Division Members.
- * Administering The College Intern Program.
- * Keeping The Division Informed On New Technology By Maintaining Subscriptions To Police Publications.
- * Data Processing Coordination.
- * Division Forms: Development and Control.
- * Preparation Of The Annual Report.
- * Legal Research.
- * Staff Support For The Chief of Police And All Bureau, Section and Unit Commanders.
- * Mapmaking And Other Graphic Arts.
- * Statistics Regarding The Operations Of The Police Division.
- * Custody Of Division History.
- * Liaison.

PROPERTY MANAGEMENT SECTION

This section is staffed by: one sergeant (commander) , five patrol officers and three auto equipment service people. All personnel in the various areas participate in an on-going program to update procedures in an effort to improve operations.

As a part of an on-going effort to keep abreast of the latest advances in the administration of fleets, the commander attended various schools and seminars throughout the year, as well as visiting other police agencies in the State of Ohio.

The Property Management Section has control over all police division vehicles, and the equipment carried in them. This section also oversees the the operation of the Police Armory and Police Property Room. Personnel from this section conduct the police auctions.

Personnel assigned to this section are responsible for the operation of the entire Division motor fleet, managed through the office in the Safety Building Garage. This office is also the receiving point for all incoming and outgoing deliveries for the Police Division. The status of all purchases are monitored from this office.

Statistics:

	1979	1980	Numerical Change	Percent Change
Total Fleet Mileage:	4,240,701 miles	N/A	N/A	N/A
Gasoline Consumption:	550,624 gal.	N/A	N/A	N/A
Accidents Involving Police Vehicles.	233	250	+ 17	+ 7.3%
Officer Injuries in the Above Accidents:	42	N/A	N/A	N/A

Inventory of Police Vehicles:

- 1 - Crime Prevention Van
- 1 - Mobile Command Post
- 1 - Harbor Patrol Van/Backup Command Post
- 1 - Undercover van (Vice/Narcotics)
- 1 - School Safety Van
- 13 - Police Patrol Wagons
- 5 - Jeeps (Marked)
- 2 - Three-Wheeled Motorcycles
- 115- Marked Police Cars
- 100- Unmarked Police Cars
- 4 - Unmarked 4-wheel drive vehicles
- 2 - Police Boats
- 1 - Bomb Trailer (Pulled by 1 Jeep above)

Total Police Fleet 247

Armory Inventory:

- 756 - Assorted Handguns
- 192 - Model 870 "Remington" Shotguns
- 52 - 30 Caliber M-1 Carbines
- 7 - "Remington" Model 700 30.06 rifles
- 5 - "Remington" Model 700 .308 Rifles

Police Auctions:

There were three (3) actions in 1980, which brought in a total of: \$ 16,453.67

REPORT OF RECORD SECTION ACTIVITY

REPORTS DESK	1979	1980	Numerical Change	Percenta Change
Expiditer Board Reports	16,139	13,598	- 2,541	- 15.7%
Watch House Cards	524	434	- 90	- 17.2%
TOTAL REPORTS PROCESSED	82,171	89,246	+ 7,075	+ 8.6%
Reports Microfilmed	97	75	- 22	- 22.7%
Other Microfilm	7	0	- 7	- 100.0%
TOTAL MICROFILM	104	75	- 29	- 27.9%

ARREST/WARRANT DESK

Warrant Grace Letters	12,249	17,500	+ 5,251	+ 42.9%
Letters Returned--Bad Address	3,076	3,424	+ 357	+ 11.6%
TOTAL SUMMONED	5,879	7,742	+ 1,863	+ 31.7%
NEW WARRANTS PROCESSED: Local Warrants	13,946	15,471	+ 1,525	+ 10.9%
Outside Warrants	750	669	- 81	- 10.8%
TOTAL WARRANTS	14,696	16,140	+ 1,444	+ 9.8%
WARRANTS WITHDRAWN/RETURNED: Local Warrants	3,674	2,945	- 729	- 19.8%
Outside Warrants	750	455	- 295	- 39.3%
TOTAL WARRANTS WITHDRAWN	4,424	3,400	- 1,024	- 23.1%
TOTAL ARRESTS PROCESSED	13,227	13,311	+ 89	+ .63%

RECORDS DESK

DISPOSITIONS POSTED: Juveniles	4,085	9,044	+ 4,959	+ 121.4%
Muni Court	6,863	4,334	- 2,529	- 36.8%
Grand Jury	1,996	1,519	- 477	- 23.9%
Common Pleas	1,352	1,563	+ 211	+ 15.6%
TOTAL DISPOSITIONS	9,319	16,100	+ 6,781	+ 72.8%
RECORD CHECKS Lucas Co. Prosecutor/Jury Lists	5,848	8,908	+ 3,060	+ 52.3%
Notary Publics	1,317	851	- 466	- 35.4%
Pretrial Release/Muni Probation/ City Employees/Bd.Education/Oth. Unp'd	16,244	20,282	+ 4,038	+ 24.9%
Other Paid Checks	4,262	2,348	- 1,914	- 49.8%
TOTAL RECORD CHECKS	27,671	32,389	+ 4,718	+ 17.1%

AUTO DESK

	1979	1980	Numerical Change	Percentage Change
Stolen Autos Processed	1,941	2,021	+ 180	+ 4.1%
Recovered Stolen Autos	1,581	1,642	+ 61	+ 3.9%
AUTOS TOWED: Muni Tows Muni Tows	264	111	- 153	- 58.0%
District No. 1	2,148	2,007	- 141	- 6.6%
District No. 2	3,499	3,633	+ 134	+ 3.8%
District No. 3	2,504	1,913	- 591	- 23.6%
District No. 4	1,439	1,535	+ 96	+ 6.7%
District No. 5	1,331	1,292	- 39	- 2.9%
Kasle Iron Junks	72	37	- 35	- 48.6%
Heavy Duty Tows	85	74	- 11	- 12.9%
Other Autos Junked	N/A	591	N/A	N/A

MAIL CLERK DESK

TOTAL INCOMING MAIL	N/A	35,640	N/A	N/A
Incoming Letters Processed	1,261	2,179	+ 918	+ 72.8%
Outgoing Letters Typed	463	359	- 104	- 22.5%
Insurance Reports Copied	4,305	4,400	+ 95	+ 2.2%
Settlement Of Claims Letters	N/A	1,784	N/A	N/A

N.O.R.I.S. ENTRIES AND INQUIRIES

Warrant Entries	13,996	15,698	+ 1,701	+ 12.2%
Arrest Entries	40	13,311	N/A	N/A
A.T.L. Entries	1,476	1,653	+ 177	+ 12.0%
Parking Tags	77,859	58,171	- 19,688	- 25.3%
Moving Violations	48,752	41,661	- 7,091	- 14.5%
Cancellations	14,531	12,056	- 2,475	- 17.0%
Inquiries	131,956	132,077	+ 121	+ .09%
TOTAL N.O.R.I.S.	318,620	305,688	- 12,932	- 4.1%

GUN CONTROL DESK

Total I.D. Photocards Processed	6,852	7,357	+ 505	+ 7.4%
--------------------------------------	-------	-------	-------	--------

RECORD SECTION INCOME

1979

1980

	INSURANCE REPORTS	RECORD CHECKS	GUN CONTROL	AUCTION INCOME	MONTHLY TOTALS	INSURANCE REPORTS	RECORD CHECKS	GUN CONTROL	AUCTION INCOME	MONTHLY TOTALS	NUMER. CHANGE	% CHANGE
JAN	\$1,459.00	\$860.00	\$1,749.50	N/A	\$4,068.50	\$1,233.50	\$947.00	\$1,850.00	N/A	\$4,030.50	- \$38.00	- .9%
FEB	\$700.00	\$864.00	\$1,794.50	N/A	\$3,358.50	\$1,249.00	\$465.00	\$1,898.50	N/A	\$3,612.50	+ \$254.00	+ 7.6%
MAR	\$797.00	\$1,102.00	\$2,020.00	N/A	\$3,919.00	\$1,360.50	\$543.00	\$1,975.50	N/A	\$3,879.00	- \$40.00	- 1.0%
APR	\$855.00	\$1,571.00	\$1,657.00	N/A	\$4,083.00	\$895.00	\$825.00	\$1,947.50	N/A	\$3,667.50	- \$415.50	- 10.2%
MAY	\$834.00	\$1,165.00	\$1,562.50	N/A	\$3,561.50	\$932.00	\$591.00	\$1,872.50	N/A	\$3,395.50	- \$166.00	- 4.7%
JUN	\$707.00	\$1,654.00	\$1,674.00	N/A	\$4,035.00	\$1,036.00	\$613.00	\$1,567.50	\$7,825.00	\$11,041.50	+ \$7,006.50	+173.6%
JUL	\$969.00	\$1,251.00	\$1,838.00	\$1,266.44	\$5,324.44	\$673.00	\$363.00	\$1,800.00	N/A	\$2,836.00	-\$2,488.44	- 46.7%
AUG	\$869.00	\$1,167.00	\$1,917.00	N/A	\$3,953.00	\$1,245.50	\$720.00	\$2,148.00	N/A	\$4,113.50	+ \$160.50	+ 4.1%
SEP	\$1,111.00	\$579.00	\$1,667.00	N/A	\$3,357.00	\$1,194.50	\$912.00	\$2,114.00	N/A	\$4,220.50	+ \$863.50	+ 25.7%
OCT	\$1,734.00	\$953.00	\$1,664.00	N/A	\$4,351.00	\$822.00	\$1,181.00	\$2,797.00	N/A	\$4,800.00	+ \$449.00	+ 10.3%
NOV	\$1,451.00	\$1,299.00	\$1,749.50	N/A	\$4,499.50	\$2,328.00	\$618.00	\$1,941.00	N/A	\$4,887.00	+ \$387.50	+ 8.6%
DEC	\$1,751.00	\$344.00	\$1,794.00	N/A	\$3,889.00	\$1,466.00	\$1,028.00	\$2,157.00	N/A	\$4,651.00	+ \$762.00	+ 19.6%
TOT	\$13,234.00	\$12,809.00	\$21,087.00	\$1,266.44	\$48,398.94	\$14,435.00	\$8,606.00	\$24,068.50	\$7,825.00	\$55,134.50	+ \$6,735.56	+ 13.9%

IDENTIFICATION UNIT ACTIVITIES

FINGERPRINT PROCESSING	1979	1980	Numerical Change	Percentage Change
NEW SUBJECTS PROCESSED	1,529	1,418	- 111	- 7.3%
REPEATERS RE-PROCESSED	1,251	1,326	- 75	- 6.0%
REPEATERS RE-PHOTOGRAPHED	1,251	1,326	- 75	- 6.0%
FINGERPRINT CHARTS TO OTHER AGENCIES	2,780	2,762	- 18	- .64%
NON-CRIMINAL FINGERPRINT CARDS RECORDED	1,506	1,536	+ 30	+ 2.0%
DECEASED SUBJECTS FINGERPRINTED	118	32	- 86	- 73%
FINGERPRINT CARDS FROM OTHER AGENCIES	123	104	- 19	- 15.4%
FINGERPRINT CARDS FILED	1,965	1,881	- 84	- 1.5%
MALE & FEMALE ARRESTS	13,507	13,311	- 196	- 1.5%

PHOTO LAB ACTIVITIES

FILM PROCESSED: 4X5(732) 3¼X4¼(138) 2¼X3¼(13) =	1,758	883	- 875	- 49.8%
FILM PROCESSED: "POLAROID"	1,066	1,085	+ 19	+ 1.8%
FILM PROCESSED: ROLL FILM 120	N/A	495	N/A	N/A
FILM PROCESSED: ROLL FILM 135	N/A	165	N/A	N/A
ENLARGEMENTS : 4X5(2,852) 5X7(56) 8X10(2,421)	3,795	5,329	+ 1,534	+ 40.4%
CONTACT PHOTOS : 3½ X 5 & 4 X 5	3,305	1,412	- 1,893	- 57.3%

LATENT PRINTS

PHOTOGRAPHED	105	33	- 72	- 68.6%
COMPARED	290	113	- 177	- 61.0%
IDENTIFIED	39	11	- 28	- 71.8%

MISCELLANEOUS FUNCTIONS

C- FILES MADE	122	73	- 49	- 40.9%
OBITUARIES FILE CHECKED	8,090	7,066	- 1,024	- 12.7%
FILES MARKED DECEASED UPON INFORMATION	171	295	+ 124	+ 72.5%
COURT APPEARANCES	113	46	- 67	- 59.3%

TOLEDO POLICE DIVISION REGIONAL LABORATORY

	CASES	EXHIBITS
GENERAL ANALYTICAL CHEMISTRY		
Petroleum Product	29	65
Soil	8	19
Glass	9	21
Paint	2	4
Miscellaneous	16	52
SEROLOGICAL		
Semen	67	137
Blood	139	239
MICROSCOPY		
Hairs and Fibers	39	68
FIREARMS AND TOOLMARKS		
Gunshot Residue	10	19
Comparison	49	447
Mechanical Operation	188	220
Toolmarks	9	44
Miscellaneous	51	73
DRUG CHEMISTRY		
Marijuana	391	1,996
Drugs	582	14,280
ALCOHOL		
B.A.C.	355	355
Liquor	62	233
MISCELLANEOUS PHYSICAL MATCHING		
	13	74
MISCELLANEOUS		
	22	58
REGIONAL DATA		
METRO DRUG UNIT		
D(d)	234	5,202
D(m)	118	916
F(mo)	4	6
A(1)	1	1
LUCAS COUNTY CORONER		
SER(b)	58	58
A(b)	337	437
SER(s)	1	1
LUCAS COUNTY WORK RELEASE		
D(d)	3	4
D(m)	8	8
A(b)	14	14
LUCAS COUNTY PROSECUTOR		
SER(b)	4	4
SER(s)	2	3
D(d)	2	4
F(gsr)	2	2
F(mo)	5	7

TOLEDO POLICE DIVISION REGIONAL LABORATORY- CONTINUED

	CASES	EXHIBITS
LUCAS COUNTY SHERIFF'S DEPARTMENT		
SER(b)	4	5
SER(s)	1	1
F(t)	1	6
F(c)	2	9
F(misc)	1	3
F(mo)	3	5
F(gsr)	1	1
GAC(p)	2	14
GAC(m)	2	8
D(m)	12	53
D(d)	18	221
METRO PARKS		
D(m)	4	18
D(d)	5	33
A(1)	1	1
CITY OF TOLEDO PARK RANGER		
D(m)	2	2
TOLEDO MUNICIPAL PROSECUTOR		
F(misc)	1	3
VICE UNIT		
D(d)	4	23
A(1)	5	13
F(mo)	2	2
F(c)	1	3
SER(s)	1	10
SYLVANIA POLICE DEPARTMENT		
D(d)	6	97
GAC(p)	1	11
WATERVILLE POLICE DEPARTMENT		
D(m)	6	11
SER(b)	1	1
MONCLOVA TOWNSHIP POLICE DEPARTMENT		
D(m)	1	4
WALBRIDGE POLICE DEPARTMENT		
D(m)	3	11
D(d)	2	13
UNIVERSITY OF TOLEDO POLICE		
GAC(m)	1	4
F(t)	1	3
ERIE POLICE DEPARTMENT		
A(b)	1	1
WASHINGTON TOWNSHIP POLICE DEPARTMENT		
F(c)	1	3
F(m)	1	1
A(1)	2	2
D(m)	1	1
OTTAWA HILLS POLICE DEPARTMENT		
M	1	1
D(d)	3	3

TOLEDO POLICE DIVISION REGIONAL LABORATORY- CONTINUED

	CASES	EXHIBITS
LAKE TOWNSHIP POLICE DEPARTMENT		
D(d)	2	10
PERRYSBURG POLICE DEPARTMENT		
D(m)	2	3
D(d)	1	67
WHITEHOUSE POLICE DEPARTMENT		
D(m)	1	1
MISC	1	2
OREGON FIRE DEPARTMENT		
GAC(p)	2	4
MAUMEE POLICE DEPARTMENT		
SER(s)	1	1
A(1)	1	1
D(m)	2	2
D(d)	6	549
HOLLAND POLICE DEPARTMENT		
MISC	2	3
JERUSALEM TOWNSHIP FIRE DEPARTMENT		
GAC(p)	5	14
ARSON UNIT		
GAC(m)	1	1
GAC(p)	3	3
GENOA POLICE DEPARTMENT		
F(c)	2	2
OREGON POLICE DEPARTMENT		
SER(s)	1	1
SER(b)	2	3
A(b)	3	3
A(1)	1	1
F(mo)	1	1
F(c)	1	2
D(m)	2	12
D(d)	7	156
MISC	1	2
GROSS NUMBER OF CASES RECIEVED FOR 1980:		1,607
SUBPOENAS FOR 1980:		
Received		206
Testified		38
SUBMISSIONS TO ANOTHER LABORATORY		
B.C.I. - London, Ohio		
F(m)	1	2
MISC	3	40
Handwriting	10	81
B.C.I.-Fremont, Ohio		
SER(b)	1	1
SER(s)	1	1
F.B.I.		
GAC(m)	9	12
GAC(g)	2	12
F(c)	2	318
F(t)	1	6
MISC	2	6

COMMUNICATIONS SECTION

ACTIVITIES OF EACH RELIEF:

	1980 Answered Calls For Service (Mobile Units)	1979 Answered Calls For Service (Mobile Units)	Numerical Change	Percentage Change
0600 X 1400	76,312	75,504	+ 808	+ 1.07%
1400 X 2200	122,547	122,700	- 153	- .12%
2200 X 0600	120,266	109,730	+ 10,536	+ 9.6%
TOTALS	319,125	307,934	+ 11,191	+ 3.6%

ADDITIONAL STATISTICS:

	1980	1979	Numerical Change	Percentage Change
18 Hour Parking Checks	4,969	5,182	- 213	- 4.1%
T.A.R.T.A. Checks	3,165	3,570	- 415	- 11.6%
Park Checks	4,121	2,632	+ 1,489	+ 56.6%

Area of The City of Toledo — 87 square miles

Estimated Population — 354,265

Total Incoming Telephone Calls For 1980 — 382,920
 Calls Answered Within 25 Seconds — 375,772

Calls To Recorder (after 25 seconds) — 7,148
 Calls Abandoned By Calling Party — 2,941

* In 1980 there were 3,275 calls for service in which there were no mobile units available to send.

Personnel Changes:

On June 1, 1980, the Communications Section went from all patrol officers, with a sergeant supervisor, to a lieutenant supervisor, sergeant dispatchers; with patrol officer telephone operators. This change was made for better supervisory control and accountability.

I
N
V
E
S
T
I
G
A
T
I
V
E

S
E
R
V
I
C
E
S

B
U
R
E
A
U

CRIMES AGAINST PERSONS SECTION

During 1980, the Crimes Against Persons Section was composed of one captain (commander), one lieutenant, six sergeants (down one from 1979), and nineteen patrol officer—investigators. All homicides, aggravated robberies and sexual assaults in the major category are investigated by this section. In addition, serious and minor assaults, purse snatches and related sex crimes are processed through the "Persons" section. Supervision and responsibility of the afternoon and night personnel also comes under the control of the captain and lieutenant of this section.

As in the past we will continue to stress crime prevention by cooperating with various civic groups. This is accomplished by appearing on all three television stations, especially in the area of street crimes and rape prevention. In the past, we have participated in discussions on crime prevention at various schools in the city and will continue to do so when requested.

During 1980, we experienced an increase in homicide and robbery related offenses and a slight decrease in sexual assault complaints.

HOMICIDE UNIT

Total number of complaints received in 1980 were 9,685 (an increase of 1,641 or 20.4%). Of this number, 863 required a follow-up investigation. There were 60 homicides reported and investigated in 1980. An increase of 11 over 1979. A total of 12 remain unsolved. Handguns were used in 28 of the total homicides.

ROBBERY UNIT

The total number of complaints received in 1980 were 1,784 (an increase of 271 or 17.9%). There were 25 bank robberies in 1980 as opposed to 11 in 1979. Through excellent cooperation with the F.B.I., 21 of these have been cleared. Four remain unsolved.

SEXUAL ASSAULT UNIT

The total number of complaints received in 1980 were 943 (an decrease of 13 from 1979 or 1.4%). There were 248 rapes and attempt rapes reported and investigated in 1980. A decrease of 22 from 1979 or 8.1%.

METRO DRUG UNIT

Total Cases for 1980	293
Total Cases for 1979	357
Total Cases Are Down	23.5%
Arrests For 1980	408
Arrests For 1979	534
Arrests Are Down	23.5%
Search Warrants For 1980	102
Search Warrants For 1979	137
Search Warrants Are Down	25%
Officer And/Or Phone Complaints For 1980	343
Officer And/Or Phone Complaints For 1979	879
Officer And/Or Phone Complaints are Down	60.97%
Drug Seizure For 1980 (Dollar Amount)	\$ 771,140.00
Drug Seizure For 1979 (Dollar Amount)	\$2,788,199.00
Drug Seizure (Dollar Amount) is Down	\$2,017,059.00
Subpoenas For All Courts in 1980	1,307
Subpoenas For All Courts in 1979	2,017
Subpoenas For All Courts Are Down	35.20%
Personnel in 1980	10
Personnel in 1979	13
Personnel is Down	23%
Budget for 1980	\$ 50,000.00
Budget For 1979	\$100,000.00
Budget is Down	\$ 50,000.00

INVESTIGATIVE SERVICES BUREAU

CRIMES AGAINST PROPERTY SECTION

The Crimes Against Property Section received and processed 36,151 reported offenses. Consistant with the Selective Investigation Policy of the bureau, 11,302 or 31% of those offenses were actually investigated.

The Crimes Against Property Section is composed of four units, with each unit investigating a specialized area of criminal activity directed at property. The Special Theft Unit handles the greatest volume of complaints (19,619 reported offenses in 1980) with 4,916 investigations and 2,125 arrests. This unit also handles the largest variety of complaints: Grand Theft, Petit Theft, Criminal Damage, Shoplifting, Misuse of Credit Cards, Mail Theft, Counterfeit Money, Escaped Fugitives and Con Games; to name a few.

Following are the statistics for the units in this section:

SPECIAL UNIT

Complaints Received	19,619
Grand Theft	1,357
Petit Theft	5,054
Criminal Damage/Miscellaneous	3,494
Complaints Assigned	4,916
Letter Mailed	2,854
Exceptional Clearances	2,133
Unfounded.	14
Arrests.	2,125

BURGLARY UNIT

Complaints Received	8,726
Assigned Complaints	3,022
Letters Mailed.	5,485
Arrests.	817
Exceptional Clearances.	830
Changes	185
Unfounded.	175

CHECK UNIT

Complaints Received	5,243
Complaints Assigned	1,737
Arrests.	433
Exceptional Clearances.	347
Warrants Issued by Prosecutor	3,320

AUTO UNIT

Complaints Received	2,563
Grand Theft Autos.	1,627
Miscellaneous Complaints	918
Complaints Unfounded.	130
Arrests.	248
Exceptional Clearances	60

SPECIAL INVESTIGATIONS SECTION

This section was established on September 1, 1980. It incorporated the Staff Unit of the Adult Investigations Section together with the Scientific Investigations Unit, the Property Recovery Unit, the Fire - Police Arson Unit and Intelligence responsibility.

Arson Unit

In a brief comparison of 1979 to 1980, the following facts are presented:

	1979	1980
Total Assignments	687	905
Arsons Assigned	305	348
Adults Arrested.	46	63
Juveniles Arrested	27	24

SCIENTIFIC INVESTIGATIONS UNIT (SIU)

The year 1980 brought a number of changes to the Investigative Services Bureau. First, polygraph examinations were conducted entirely by officers within the bureau. Below you will find the statistics regarding the polygraph unit.

Also, in April of 1980 the Evidence Technician Program was transferred from the Support Services Bureau to the Investigative Services Bureau. This unit combined with the polygraph unit to form the Scientific Investigations Unit.(SIU)

Personnel in the SIU consist of two command officers who function as polygraph examiners, and supervise the unit. There are three patrol officers assigned who serve as evidence technicians.

Statistics:

Polygraph Unit

Examinations scheduled	354
Examinations administered	235
No Shows or Refused.	119

Evidence Technician Unit – April to December only:

Total Assignments	857
Crime Scene Assignments	
Latent fingerprint search	537
Photo assignments.	431
Neutron Activation Analysis Tests	41
Moulage Casts	8
Other	182

Schools and Seminars Attended

- Advanced Latent Fingerprint Seminar— 5/19 to 5/23 London, Ohio
One Evidence Technician from SIU
- Bomb Crime Scene Seminar — 9/14 to 9/19 Quantico, Va.
One Lieutenant from SIU
- Polygraph Training — 10/20 to 10/31 Dearborn, Mich.
One Lieutenant from SIU

VICE/NARCOTIC SECTION 1980 INFORMATION

During 1980, the Vice Unit investigated the massage parlor operations in Toledo. Using undercover officers from the Vice Unit, we were able to make several arrests for soliciting, prostitution and promoting prostitution inside several massage parlors. We then worked with the Lucas County Prosecutor and the Law Department, and our civil cases were taken to Common Pleas Court so that restraining orders and padlocks were obtained against three massage parlors; with two of them being closed permanently.

Also, we continued our efforts toward prostitution. During one night in the month of August, Vice Unit officers working with uniformed officers in plain clothes accounted for 28 arrests related to prostitution.

The Vice Unit conducted investigations into bingo during 1980, and the results were, that one charity withdrew from the game and operators at two other games were charged.

We continued our gambling investigations throughout the year. Arrests were made for gambling, involving numbers people. Also, we used vice unit officers undercover in local bars. These officers were able to gain information involving football tickets and other sports betting. Arrests were made, and citations for violations of liquor regulations, were issued by the Department of Liquor Control.

Surveillances were conducted at various carryouts throughout the city. Arrests were made and citations issued for various violations ranging from, sales of intoxicants to minors to minors purchasing. Also, our officers continued efforts to investigate complaints of bars operating afterhours, and selling to minors. We also assisted uniform crews with problems at bars. We further were able to make buys of illegal beer and liquor at "Bootleg" operations, and were able to seize quantities of beer and liquor. We were aided in these investigations by officers from the uniform operations working undercover and, in some instances by liquor agents.

**VICE/NARCOTICS SECTION
YEARLY ARREST SHEET OF 1980
TOTAL ARRESTS— 1,524**

PROSTITUTION VIOLATION ARRESTS		843
Loitering	358	
Soliciting	338	
Public Indecency	54	
Loitering to Solicit	35	
Prostitution	22	
Loitering, Refusal To Leave	20	
Promoting Prostitution, Felony	8	
Traffic, Related To Prostitution	4	
Compelling Prostitution, Felony	2	
Procuring Prostitution	1	
Gross Sexual Imposition	1	
MESSAGE PARLOR VIOLATION ARRESTS		16
Prostitution	8	
Soliciting	4	
No Massage License	3	
Carrying a Concealed Weapon, Felony	1	
LIQUOR VIOLATION ARRESTS		88
Sale to Minor	28	
Minor Purchasing	21	
Bootlegging	9	
Furnishing Minor	7	
Afterhours Citation	5	
Improper Conduct	3	
Illegal Sales	3	
Consuming In Motor Vehicle	3	
Place Where Illegal Spirits Are Sold	3	
Sale To Intoxicated Person	2	
Serving Non-Member	2	
Employing Minor	1	
Minor Consuming	1	
DRUG VIOLATION ARRESTS		47
Drug Abuse	35	
Illegal Processing of Drug Documents	5	
Aggravated Traffic - Drugs, Felony	3	
Drug Abuse, Felony	2	
Illegal Possession of Drug Instruments	1	
Illegal Sale of Drugs, Felony	1	
GAMBLING VIOLATION ARRESTS		39
Public Gaming	19	
Gambling	14	
Gambling, Felony	3	
Allowing Gambling	2	
Possession of Numbers Slip	1	
MISCELLANEOUS VIOLATIONS ARRESTS		305
Traffic	103	
Disorderly Conduct	26	
Carrying Concealed Weapon	15	
Grand Theft, Felony	14	
Receiving Stolen Property, Felony	14	

MISCELLANEOUS ARRESTS CONTINUED.

Public Indecency	13
Assault	11
Resisting Arrest	11
Aggravated Robbery, Felony	9
Felonious Assault	9
Obstructing Justice	7
Petty Theft	7
Breaking and Entering, Felony	6
Robbery, Felony	6
D.W.I.	6
Obstructing Official Business	5
Pedestrian In Roadway	4
Fireworks Violation	3
Long Gun Ordinance	3
Vandalism	3
No Poolroom License	3
Aggravated Menacing	3
Forgery, Felony	3
Aggravated Burglary, Felony	2
Bad Checks	2
Failure To Disburse	2
Juvenile Arrest	2
No Arcade License	2
No Handgun Card	2
Attempted Murder, Felony	2
Runaway	2
Falsification	1
No Amusement Device License	1
Tampering With Coin Machine	1
Criminal Trespassing	1
Violation of State Peace Bond	1

WARRANT ARRESTS, CRIMINAL AND TRAFFIC 186

Misdemeanor Arrests	171
Felony Arrests	15

MISCELLANEOUS ACTIVITIES. 1,165

Subpoenas For Court Appearances	920
Municipal Court	711
Common Pleas Court	98
Columbus Liquor Hearings	76
Juvenile Court	29
Grand Jury	6
License Investigations.	230
Liquor License	191
Arcade License	27
Poolroom License	8
Phrenologist License	4

SEARCH WARRANTS SERVED 15

YOUTH SERVICES SECTION STATISTICS

1980

	CITED TO COURT		CASES ADJUSTED		ADULT ARRESTS	EXCEPT'LY CLEARED COMPL'NTS	INACTIVE & UNFOUND'D COMPL'NTS	EXTRA CLEARAN'S
	BOYS	GIRLS	BOYS	GIRLS				
Arson & Related Offenses	124	21	215	17	0	202	499	21
Homicide & Assault	182	72	191	79	32	455	353	11
Kidnapping & Extortion	0	0	1	0	0	16	24	1
Narcotics	8	6	30	20	0	3	1	0
Offenses Against Family	252	381	342	588	85	63	51	5
Offenses Against Public Peace	54	24	364	112	11	78	64	1
Robbery Burglary Trespassing	145	9	51	5	8	23	233	5
Sex Offenses	4	0	0	1	1	1	0	0
Theft & Fraud	244	44	160	22	17	148	1,758	34
Weapons Control	12	1	2	0	0	1	3	0
Miscellaneous Offenses	3	0	5	0	0	1	3	0

TOTAL	1,028	558	1,361	844	154	992	2,988	78
-------	-------	-----	-------	-----	-----	-----	-------	----

1980 GRAND TOTAL	1,586		2,205		154	992	2,988	78
------------------	-------	--	-------	--	-----	-----	-------	----

1979 G.T.	1,736		2,365		130	1,082	3,209	135
1978 G.T.	1,680		3,177		159	898	3,637	249
1977 G.T.	1,464		3,152		156	1,083	3,703	285
1976 G.T.	2,194		2,624		410	1,519	4,996	866
1975 G.T.	2,682		2,389		515	2,153	5,147	1,423
1974 G.T.	2,628		3,011		564	1,404	6,015	1,572
1973 G.T.	2,328		4,053		414	1,522	2,534	1,331

JUVENILES CITED TO COURT

	BOYS	GIRLS
ARSON AND RELATED OFFENSES		
Arson, Aggravated	5	0
Criminal Damaging and Endangering	111	19
Criminal Mischief	2	0
Vandalism	6	2
HOMICIDES AND ASSAULTS		
Assault	128	52
Assault, Aggravated	5	1
Assault, Felonious	28	9
Assault, Negligent	3	0
Menacing	12	5
Menacing, Aggravated	6	5
NARCOTICS		
Drug Abuse	4	6
Possession of Marihuana	1	0
Trafficking in Drugs	2	0
Trafficking in Marihuana	1	0
OFFENSES AGAINST THE FAMILY		
Incorrigible	6	5
Interference With Custody	4	6
Runaway	169	326
Safe Keeping, Dependant	41	1
Truancy	1	0
Warrant: Dependant	3	1
Warrant: Minor	28	16
Warrant: Ohio Youth Commision	0	1
OFFENSES AGAINST JUSTICE		
Escape	2	1
OFFENSES AGAINST PUBLIC PEACE		
Disorderly Conduct: Disturbance	18	12
Disorderly Conduct: Intoxication	2	1
Fireworks Ordinance	5	0
Making False Alarms	2	4
Riot	2	3
Safe School Ordinance	23	1
Telephone Harassment	0	2
ROBBERY, BURGLARY, TRESPASSING		
Attempt Aggravated Burglary	1	0
Breaking and Entering	32	0
Burglary	3	0
Burglary, Aggravated	7	0
Criminal Trespass	39	6
Robbery	37	2
Robbery, Aggravated	17	1
Tampering With Coin Machines	9	0
SEX OFFENSES		
Public Indecency	1	0
Rape	2	0
Sexual Imposition	1	0
THEFT AND FRAUD		
Attempt Theft	3	0
Attempt Theft, Grand	1	0
Complicity	1	0
Forgery	2	6
Misuse of Credit Card	1	1
Receiving Stolen Property	35	5

JUVENILES CITED TO COURT

	BOYS	GIRLS
THEFT AND FRAUD (CONTINUED)		
Theft, Grand	53	13
Theft, Petty	79	13
Theft of Auto, Grand	33	1
Theft of Bicycle, Grand	2	0
Theft of Bicycle, Petty	20	2
Unauthorized Use of Property	1	0
Unauthorized Use of Vehicle	13	3
WEAPONS CONTROL		
Carrying Concealed Weapon	9	1
Having Weapons Under Disability	1	0
Possessing Criminal Tools	1	0
Unlawful Use of Firearms	1	0
MISCELLANEOUS OFFENSES		
Abusing Harmful Intoxicants	2	0
Traffic Ordinance	1	0
TOTAL BOYS	1,028	.
TOTAL GIRLS	558
Grand Total 1975 - 2,682		
Grand Total 1976 - 2,194		
Grand Total 1977 - 1,464		
Grand Total 1978 - 1,680		
Grand Total 1979 - 1,736		
Grand Total 1980 - 1,586		

JUVENILES INTERVIEWED, CASES ADJUSTED

	BOYS	GIRLS
ARSON AND RELATED OFFENSES		
Arson	2	0
Criminal Damaging or Endangering	183	15
Criminal Mischief	21	2
Vandalism	9	0
HOMICIDE AND ASSAULT		
Assault	152	65
Assault, Aggravated	6	4
Assault, Felonious	4	1
Assault, Negligent	2	0
Menacing	17	6
Menacing, Aggravated	10	3
KIDNAPPING AND EXTORTION		
Abduction	1	0
NARCOTICS		
Attempt Drug Trafficking	0	1
Drug Abuse	27	19
Departing: Drugs	3	0
OFFENSES AGAINST FAMILY		
Departing	0	3
Departing: Attempt Suicide	4	0
Departing: Conduct	2	0
Runaway	336	579
Incorrigible	0	1
Interference With Custody	0	3
Safe Keeping: Dependant	0	2
Falsification	1	0
Obstructing Justice	1	0

JUVENILES INTERVIEWED, CASES ADJUSTED

	BOYS	GIRLS
OFFENSES AGAINST PUBLIC PEACE		
Disorderly Conduct: Disturbance	338	100
Disorderly Conduct: Intoxication	6	4
Fireworks Ordinance	5	0
Making False Alarms	2	2
Safe School Ordinance	3	2
Telephone Harassment	8	3
ROBBERY, BURGLARY, TRESPASSING		
Breaking and Entering	1	0
Burglary	1	0
Criminal Trespass	44	5
Robbery	5	0
SEX OFFENSES		
Soliciting	0	1
THEFT AND FRAUD		
Attempt Petit Theft	2	0
Attempt Theft	1	0
Defrauding Livery or Hostelry	1	0
Forgery	3	1
Receiving Stolen Property	23	1
Passing Bad Checks	0	1
Theft, Grand	18	0
Theft, Petty	98	18
Theft of Auto, Grand	1	0
Theft of Bicycle, Petty	8	0
Unauthorized Use of Vehicle	5	1
TOTAL BOYS	1,361	.
TOTAL GIRLS	844
Grand Total 1975 - 2,389		
Grand Total 1976 - 2,624		
Grand Total 1977 - 3,152		
Grand Total 1978 - 3,177		
Grand Total 1979 - 2,365		
Grand Total 1980 - 2,205		

ADULT ARRESTS

HOMICIDE AND ASSAULT		
Assault	23	.
Assault, Felonious	5	.
Manslaughter, Involuntary	1	.
Menacing	2	.
Menacing, Aggravated	1	.
OFFENSES AGAINST FAMILY		
Attachments	1	.
Contributing to the Delinquency of a Minor	29	.
Domestic Violence	2	.
Endangering Children	12	.
Interference With Custody	37	.
Warrant	1	.
Warrant, Failure To Appear	3	.
OFFENSES AGAINST JUSTICE		
Falsification	1	.
OFFENSES AGAINST PUBLIC PEACE		
Disorderly Conduct: Disturbance	1	.
Disorderly Conduct: Intoxication	3	.
Fireworks Ordinance	2	.
Peace Bond	2	.
Safe School Ordinance	2	.

ADULT ARRESTS CONTINUED

ROBBERY, BURGLARY, TRESPASSING

Breaking and Entering	2	
Burglary, Aggravated	1	
Robbery	4	
Robbery, Aggravated	1	

SEX OFFENSES

Corruption of a Minor	1	
-----------------------------	---	--

THEFT AND FRAUD

Forgery	1	
Receiving Stolen Property	3	
Theft, Grand	6	
Theft, Petty	4	
Theft of Auto, Grand	1	
Theft of Bicycle, Petty	2	

TOTAL ADULT ARRESTS **154**

Grand Total	1975 - 410
Grand Total	1976 - 410
Grand Total	1977 - 156
Grand Total	1978 - 159
Grand Total	1979 - 130
Grand Total	1980 - 154

EXCEPTIONALLY CLEARED COMPLAINTS

ARSON AND RELATED OFFENSES

Criminal Damaging or Endangering	198	
Criminal Mischief	3	
Vandalism	1	

HOMICIDE AND ASSAULT

Assault	369	
Assault, Aggravated	6	
Assault, Felonious	10	
Menacing	52	
Menacing: Aggravated	18	

KIDNAPPING AND EXTORTION

Abduction	4	
Child Stealing	10	
Coercion	1	
Unlawful Restraint	1	

NARCOTICS

Drug Abuse	3	
------------------	---	--

OFFENSES AGAINST FAMILY

Child Abuse	4	
Contributing to the Delinquency of a Minor	4	
Domestic Violence	23	
Endangering Children	4	
Incorrigible	12	
Interference With Custody	10	
Runaway	6	

OFFENSES AGAINST PUBLIC PEACE

Disorderly Conduct: Disturbance	45	
Disorderly Conduct: Intoxication	1	
Fireworks Ordinance	3	
Making False Alarms	3	
Peace Bond	1	
Safe School Ordinance	8	
Telephone Harassment	17	

EXCEPTIONALLY CLEARED COMPLAINTS CONTINUED

ROBBERY, BURGLARY, TRESPASSING

Burglary, Aggravated	1
Criminal Trespass	13
Robbery	7
Robbery, Aggravated	2

SEX OFFENSES

Importuning	1
-----------------------	---

THEFT AND FRAUD

Forgery	1
Receiving Stolen Property	1
Theft, Grand	35
Theft, Petty	89
Theft of Auto, Grand	1
Theft of Bicycle, Grand	2
Theft of Bicycle, Petty	13
Unauthorized Use of Property	2
Unauthorized Use of Vehicle	4

WEAPONS CONTROL

Carrying Concealed Weapons	1
Improper Handling of Firearms in a Motor Vehicle	1

MISCELLANEOUS OFFENSES

Liquor Law Violation	1
--------------------------------	---

TOTAL EXCEPTIONALLY CLEARED COMPLAINTS 992

Grand Total	1975 - 2,153
Grand Total	1976 - 1,519
Grand Total	1977 - 1,083
Grand Total	1978 - 898
Grand Total	1979 - 1,082
Grand Total	1980 - 992

INACTIVE COMPLAINTS

ARSON AND RELATED OFFENSES

Arson, Aggravated	1
Criminal Damaging or Endangering	481
Criminal Mischief	4
Vandalism	5

HOMICIDE AND ASSAULT

Assault	264
Assault, Aggravated	5
Assault, Felonious	10
Menacing	46
Menacing, Aggravated	18

KIDNAPPING AND EXTORTION

Abduction	1
Attempt Abduction	4
Attempt Kidnapping	1
Child Stealing	11
Coercion	4

NARCOTICS

Drug Abuse	1
----------------------	---

INACTIVE COMPLAINTS CONTINUED

OFFENSES AGAINST FAMILY

Child Abuse	1
Contributing to the Delinquency of a Minor	16
Domestic Violence	8
Endangering Children	1
Incorrigible	3
Interference With Custody	17

OFFENSES AGAINST JUSTICE

Escape	1
------------------	---

OFFENSES AGAINST PUBLIC PEACE

Disorderly Conduct: Disturbance	19
Fireworks Ordinance	2
Littering	1
Peace Bond	4
Safe School Ordinance	14
Telephone Harassment	23

ROBBERY, BURGLARY, TRESPASSING

Breaking and Entering	1
Burglary: Aggravated	2
Criminal Trespass	8
Robbery	168
Robbery: Aggravated	46
Tampering With Coin Machines	4

THEFT AND FRAUD

Attempt Theft	4
Attempt Theft, Grand	1
Attempt Theft, Petty	2
Misuse of Credit Cards	1
Receiving Stolen Property	4
Theft, Grand	150
Theft, Petty	395
Theft of Auto, Grand	8
Theft of Bicycle, Grand	14
Theft of Bicycle, Petty	1,173

WEAPONS CONTROL

Carrying Concealed Weapon	1
Unlawful POsession of Weapon	1

MISCELLANEOUS OFFENSES

Cruelty To Animals	3
------------------------------	---

TOTAL INACTIVE COMPLAINTS 2,952

Grand Total	1975 - 5,065
Grand Total	1976 - 3,669
Grand Total	1977 - 3,669
Grand Total	1978 - 3,592
Grand Total	1979 - 3,180
Grand Total	1980 - 2,952

UNFOUNDED COMPLAINTS

ARSON AND RELATED OFFENSES

Criminal Damaging or Endangering	8
--	---

HOMICIDE AND ASSAULT

Assault	6
Menacing	3
Menacing, Aggravated	1

UNFOUNDED COMPLAINTS CONTINUED

KIDNAPPING AND EXTORTION

Abduction	2
Child Stealing	1

OFFENSES AGAINST FAMILY

Child Abuse	2
Contributing to the Delinquency of a Minor	1
Endangering Children	2

ROBBERY, BURGLARY, TRESPASSING

Robbery	3
Robbery, Aggravated	1

THEFT AND FRAUD

Theft, Grand	2
Theft, Petty	3
Theft of Auto, Grand	1

TOTAL OF UNFOUNDED COMPLAINTS **36**

Grand Total	1975 - 82
Grand Total	1976 - 73
Grand Total	1977 - 36
Grand Total	1978 - 45
Grand Total	1979 - 29
Grand Total	1980 - 36

EXTRA CLEARANCES

ARSON AND RELATED OFFENSES

Criminal Damaging or Endangering	21
--	----

HOMICIDE AND ASSAULT

Assault	8
Assault, Felonious	1
Menacing	1
Menacing, Aggravated	1

KIDNAPPING AND EXTORTION

Coercion	1
----------------	---

OFFENSES AGAINST FAMILY

Incorrigible	1
Warrants, Minor	3
Warrants, Ohio Youth Commission	1

OFFENSES AGAINST JUSTICE

Escape	1
--------------	---

ROBBERY, BURGLARY, TRESPASSING

Attempt Breaking and Entering	2
Breaking and Entering	1
Burglary, Aggravated	1
Criminal Trespass	1

THEFT AND FRAUD

Forgery	9
Theft, Grand	13
Theft, Petty	7
Theft of Auto, Grand	3
Theft of Bicycle, Petty	2

TOTAL OF EXTRA CLEARANCES **78**

COMPLAINTS RECEIVED – RECORD SECTION: 9,314

COMPLAINTS CLEARED

By Arrest	14.5%	1,344
Cases Adjusted	19.5%	1,816
Exceptionally Cleared	10.5%	992
Inactive	32.0%	2,952
Special Investigation	23.0%	2,174
Unfounded5%	36
GRAND TOTAL		9,314

Grand Total	1975 - 13,836
Grand Total	1976 - 11,039
Grand Total	1977 - 9,793
Grand Total	1978 - 9,865
Grand Total	1979 - 9,059
Grand Total	1980 - 9,314

MISSING PERSONS

LOCAL PERSONS REPORTED MISSING

Juvenile Males	631
Juvenile Female	996
Adult Males	204
Adult Females	161
TOTAL	1,992
BALANCE BROUGHT FORWARD FROM 1979	42
TOTAL	2,034
LOCATED AND CANCELLED	1,999
BALANCE CARRIED FORWARD (NOT LOCATED)	35

OUTSIDE PERSONS REPORTED MISSING

Juvenile Males	47
Juvenile Females	86
Adult Males	17
Adult Females	21
TOTAL	171
BALANCE BROUGHT FORWARD FROM 1979	8
TOTAL	179
LOCATED AND CANCELLED	158
BALANCE CARRIED FORWARD (NOT LOCATED)	21

GRAND TOTALS:

	1975	1976	1977	1978	1979	1980
Local Persons Reported Missing	2,546	1,840	1,919	1,923	1,859	2,034
Located And Cancelled.	2,586	1,849	2,070	1,939	1,865	1,999
Outside Persons Reported Missing.	100	131	143	229	225	179
Located And Cancelled.	127	129	144	222	224	158

Bicycles Recovered 463

Grand Total 1975 - 458
Grand Total 1976 - 396
Grand Total 1977 - 389
Grand Total 1978 - 326
Grand Total 1979 - 415
Grand Total 1980 - 463

Referrals 876

Grand Total 1978 - 1,165
Grand Total 1979 - 831
Grand Total 1980 - 876

Stolen Property Recovered (Value) \$ 77,161.00

Grand Total 1975 - \$ 128,523.80
Grand Total 1976 - \$ 94,892.68
Grand Total 1977 - \$ 41,274.25
Grand Total 1978 - \$ 64,343.33
Grand Total 1979 - \$ 50,122.00
Grand Total 1980 - \$ 77,161.00

A
D
M
I
N
I
S
T
R
A
T
I
V
E

S
E
R
V
I
C
E
S

B
U
R
E
A
U

**POLICE COMMUNITY RELATIONS SECTION
1980 ANNUAL REPORT**

In June of 1980, the Police Community Relations (PCR) Section moved from their offices at 2927 Monroe Street to the Scott Park District Station at 2301 Nebraska Avenue.

The PCR Section personnel was reduced by twenty per cent through attrition and transfers. Restructuring of the supervisor's duties improved decision making by having a command officer at the scene of any social dysfunction to which PCR officers are assigned; as well as interaction with school and community officials.

Specific functions and duties performed and results achieved are as follows:

The "Invitation To Understanding Program" was presented to students of the 1st., 4th., and 7th. grades in all public, parochial and private schools in the city. In all, four hundred and eight (408) presentations were made by PCR officers. The sessions were attended by a total of 21,666 students.

Four (4) tours were conducted during the year with ninety-one (91) persons participating.

Special presentations such as: Drug and Alcohol Abuse, Rape Prevention, Shoplifting, Child Molesting and others were conducted by PCR officers a total of 104 times during 1980. In all, 6,735 persons attended the sessions.

This section acts as a liaison between the Police Division and many community, special interest, service and political groups by attending as members, or resource persons, regularly scheduled meetings. In 1980 PCR officers attended 256 of these meetings. The organizational lists include, but not limited to, : Lucas Metropolitan Housing Authority, T.A.R.T.A. Board, Neighborhood Housing Services Board, Toledo City Schools Human Relations Advisory Board, Toledo Lucas County Safety Council, Toledo Automobile Club, Volunteers of America, Salvation Army, N.A.A.C.P. and many others.

In 1980, 378 liaison contacts, or referrals, were made with other Toledo Police Division sections, Senior Centers, Information and Referral Service, F.B.I., United States Postal Service and other outside law enforcement agencies.

The PCR receives and investigates school complaints involving school disturbances, violation of the Safe School Ordinance, racial incidents, and violations of laws relating to the safety and security of teachers, administrators, students and school property. In 1980, 451 such complaints were received and investigated. Complaints involving discrimination and harrasment are referred to the appropriate enforcement or social agency.

Citizen complaints on community problems are received and investigated by PCR officers. These complaints usually involve continuing disputes between neighbors; harrasment, ethnic or racially based problems, etc., that have not been solved by conventional police mediation techniques or social agency involvement. In 1980, PCR officers successfully completed 663 of these citizen complaints.

One of the major functions of the Police Community Relations Section is to initiate school and community surveillances to keep the Police Division continually aware of the actions, attitudes and moods displayed by persons who historically have exhibited disruptive behavior. In addition to the surveillances PCR officers also act as police counsellors when confrontations arise. A case in point were the problems which occurred during the summer concerning the turning on of fire hydrants throughout the city. Assistance was given by PCR officers during the school year concerning student problems which took place at T.A.R.T.A. stops in the Central Business District.

School surveillances are instituted and continued whenever potential problems exist. The PCR officers interacted with school officials to coordinate enforcement efforts, and provided information to the uniform patrol units on school problems on their districts.

During the School Traffic Safety Unit's "Safe-T-City" program which is presented over an eight week period during the summer, the PCR staff conducts a "Community Interest Program" for the parents while their children are attending Safe-T-City. Eighty separate programs are presented covering a wide range of police and citizen involvement programs.

Between April 8, 1980 and September 30, 1980 conducted the "Community Safety Education Program" which was developed to reduce bicycle accidents and promote bicycle safety. The results of this program were:

- A. A reduction in the total number of bicycle accidents by 37.33% during the same period from 1979.
- B. A reduction of 4.53% in pedestrian accidents during the same period from 1979.
- C. Contact with 16,930 individuals through this program. (The initial goal was to reach at least 13,000 persons.)
- D. One hundred and two (102) Bicycle Court Hearings conducted by PCR officers on 20 separate Saturdays.
- E. Nine (9) Bicycle Rodeos were conducted at various locations with 868 bicyclists participating.

POLICE COMMUNITY RELATIONS SECTION – CONTINUED

- F. Twenty-seven (27) community safety talks were presented.
- G. 2,231 bicycle safety checks were completed.
- H. 4,861 bicycle violations were cited into Bicycle Hearing Court.
- I. Nine hundred and thirteen (913) bicycle violation warnings were issued.
- J. There was a 214.35% increase in bicycle licenses issued in 1980 as compared to 1979.
- K. A supportive relationship between the Police Division and the community was developed toward pedestrian and bicycle safety.

PCR command officers spent 1,168 actual duty hours coordinating, administering and directing this program.

The "Crime Prevention – Community Resources Grant" was operational from January 1, 1980 through December 31, 1980. The PCR administrative officer administered the grant from August to the end of the year. Patrol officers from the PCR section spent 2,171 man hours working in the grant area.

SCHOOL TRAFFIC SAFETY UNIT

The School Traffic Safety Unit visited 216 schools and conducted 529 "School Safety Assemblies". A total of 50,212 students attended these assemblies.

Unit personnel attended 52 meetings with various safety minded groups, serving as guest speakers at three of the meetings.

Semi-regular appearances were made on youth oriented television shows on the local TV stations for a total of approximately 90 minutes of viewing time.

The School Traffic Safety Unit serves as the sponsoring unit of the "Safety Patrol Leadership Camp" which is conducted in Napoleon, Michigan in September of each year. This is a 3 day workshop for Patrol Captains on leadership, formation and development. In 1980, 96 Patrol Captains attended the camp. It is co-sponsored and funded by the Toledo Lucas County Safety Council and F.O.P. Lodge No. 40.

Safe-T-City

This two week program was presented four times during the summer at the Scott Park Shelter House. A total of 524 pre kindergarten students and 34 exceptional children completed the program. The program was also repeated for one week at the Larc Lane School, with 234 children completing the program.

Additional activities:

1. Cooperated with the Toledo Blade's "Safety Guard of the Week" program by nominating 26 safety guards.
2. Selected 5 outstanding safety patrol persons for the media's Gold Medallion Award.
3. Coordinated efforts with the AAA to escort all safety guards to a Mudhen baseball game.
4. Received, investigated and cleared 121 complaints of safety hazards on school routes.
5. Spent 491 man hours assisting support agencies.
6. Conducted a bicycle safety class at the University of Toledo.
7. Worked with railroads to make crossings safe for child crossing.
8. Coordinated safety poster campaign with the Toledo Automobile Club.

TRAINING AND RECRUITMENT SECTION

The following training programs were presented by the staff of the Training Section during 1980:

- Advanced Accident Investigation
- Polygraph Capabilities And Your Case
- Executive Protection
- Cardio-Pulmonary Resuscitation (CPR) Training
- March In-Service Training Block
- April In-Service Training Block
- Advanced Techniques-Police Vehicle Operation
- Moving Target (Shotgun) Training
- Basic Police Photography Course
- Carbine And Tear Gas Refresher
- Radar Certification
- September In-Service Training Block
- October In-Service Training Block
- Interpersonal Communications
- How To Handle Difficult Employees
- How To Discipline Or Terminate Unsatisfactory Employees
- Troubled Employee Program
- Hazardous Devices Group Training
- Roll Call Training And Training Bulletins
- Retraining And Off-Duty Weapons Familiarization

The Training And Recruitment Section projects a 50% increase in training per division member in 1981.

CRIME PREVENTION UNIT

The types of activities engaged in by the unit in 1980 , and the comparison to the same activities for 1979 are as follows:

	ACTIVITIES		HOURS		PERSONS ATTENDING	
	79	80	79	80	79	80
Tours	10	4	14	4	227	21
Meetings	67	121	74	142	518	1160
Liaison	95	102	11	77	N/A	N/A
Programs	132	351	613	652	5658	3890
Inspections	162	159	189	315	N/A	N/A
Complaints	60	103	17	38	N/A	N/A
Citizen Assistance	34	316	N/A	74	N/A	N/A
Van Demonstrations	309	118	221	141	9381	68
Talks	170	205	238	317	5450	7082
TOTALS	1039	1475	1379	1756	21234	14621

A
P
P
E
N
D
I
X

TOLEDO POLICE DIVISION

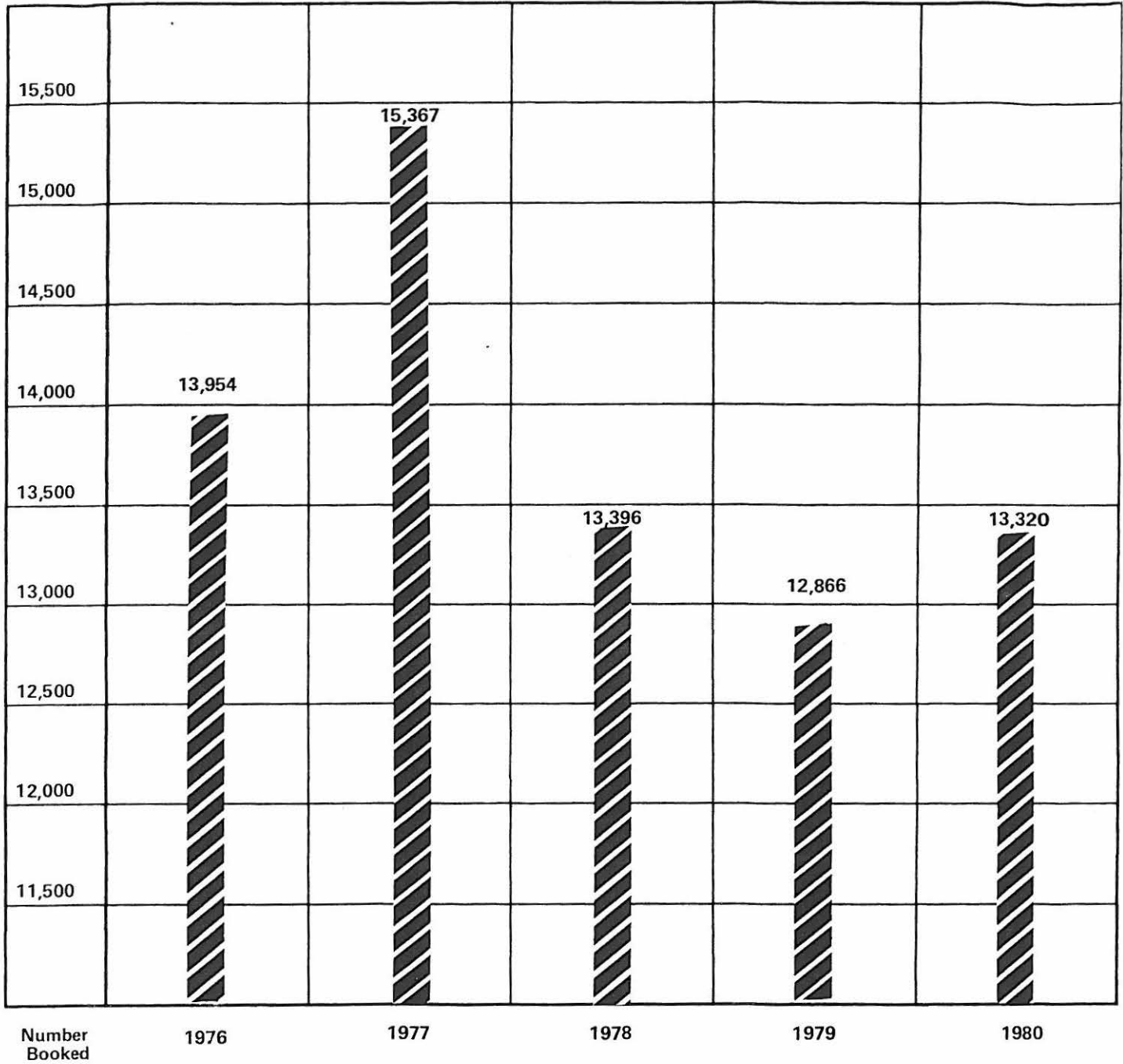
POLICE STRENGTH COMPARED TO WORKLOAD CHANGES

Ending with 12/31 of:	Division Strength	% Change	Calls For Service	% Change	Reported Crimes	% Change
1968	722		246,617		17,757	
1969	748	+3.6	258,072	+4.6	18,084	+1.8
1970	730	-2.4	270,636	+4.9	21,055	+16.4
1971	693	-5.0	258,661	-4.4	21,981	+4.4
1972	715	+3.1	249,915	-3.4	21,566	-1.9
1973	759	+6.2	273,603	+9.5	23,807	+10.4
1974	725	-4.5	308,987	+12.9	29,619	+24.4
1975	700	-3.4	324,014	+4.9	32,986	+11.4
1976	703	+0.4	326,859	+0.9	33,175	+0.6
1977	728	+3.6	339,270	+3.8	30,970	-6.7
1978	704	-3.3	320,387	-5.6	29,419	-5.0
1979	697	-1.0	307,934	-3.9	32,612	+10.9
1980	668	-4.2	319,125	+3.6	34,058	+4.4

TEN YEAR COMPARISON (1970 WITH 1980)
POLICE STRENGTH COMPARED TO WORKLOAD CHANGES

	Division Strength	% Change	Calls For Service	% Change	Reported Crimes	% Change
1970	730		270,636		21,055	
1980	668	- 9% (-62 Officers)	319,125	+ 18% (+48,489)	34,058	+ 62% (+ 13,003)

PERSONS BOOKED

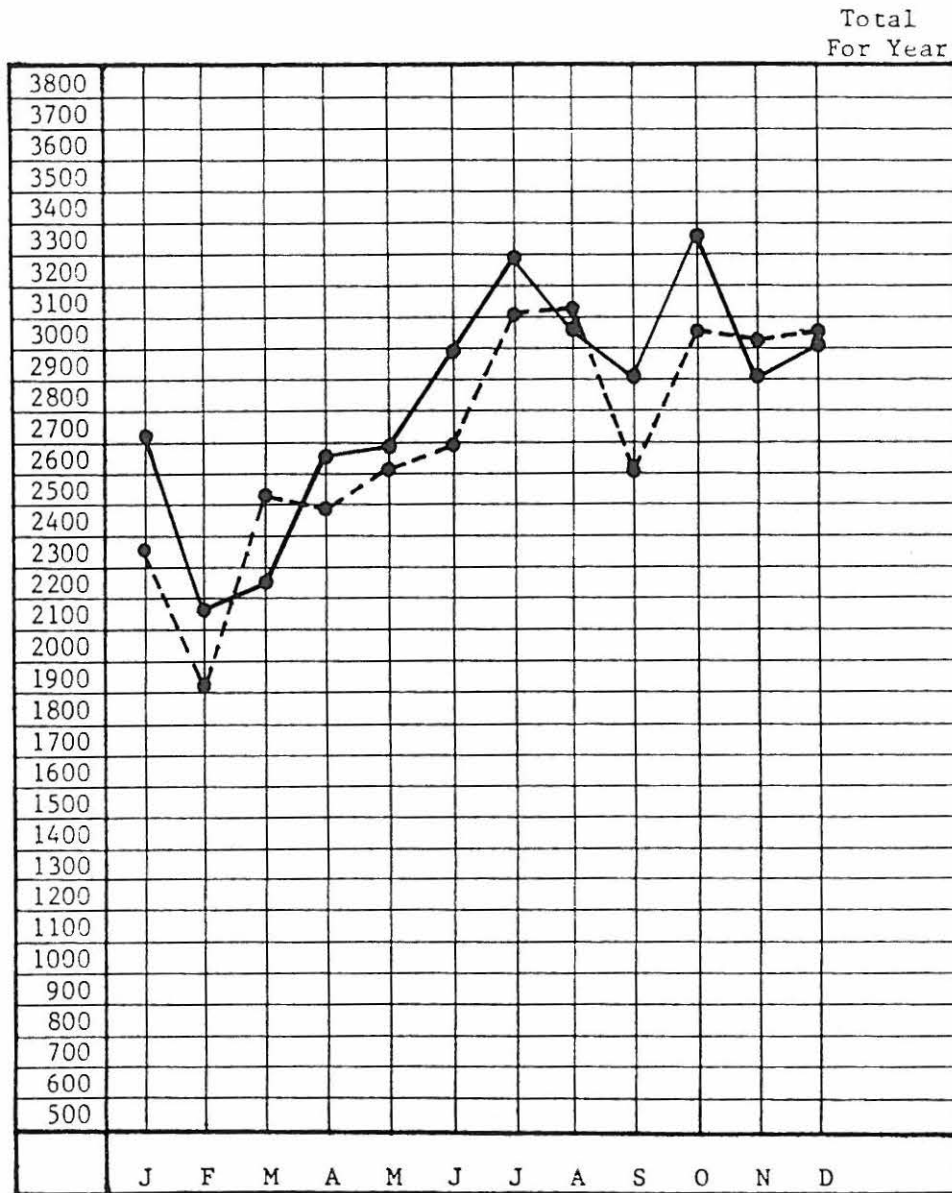


This graph shows the Total Number of Persons Booked For The Past 5 Years.

A-3

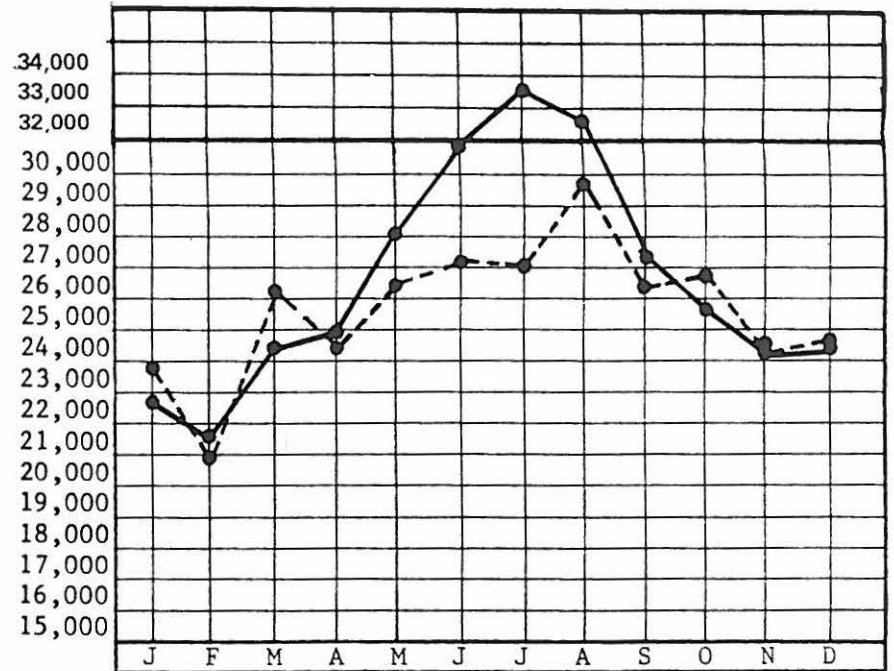
YEAR →	1	9	7	6	1	9	7	7	1	9	7	8	1	9	7	9	1	9	8	0
	Calls For Service	Crimes Reported	Percent Cleared	Calls For Service	Crimes Reported	Percent Cleared	Calls For Service	Crimes Reported	Percent Cleared	Calls For Service	Crimes Reported	Percent Cleared	Calls For Service	Crimes Reported	Percent Cleared	Calls For Service	Crimes Reported	Percent Cleared		
JANUARY	24,779	2,535	22.6	23,429	1,883	29.6	23,898	1,958	25.6	23,991	2,365	32.0	22,813	2,720	45.5					
FEBRUARY	24,332	2,280	33.9	24,006	2,078	23.1	24,737	1,746	27.7	20,924	1,921	35.0	21,599	2,162	26.5					
MARCH	25,665	2,615	24.4	28,514	2,635	25.8	26,074	2,156	32.8	26,133	2,531	25.9	24,383	2,259	19.9					
SUB-TOTAL ■	74,776	7,430		75,949	6,596		74,709	5,860		71,048	6,817		68,795	7,141	¼ ■					
APRIL	26,665	2,500	32.5	28,175	2,645	19.8	25,906	2,434	27.1	24,462	2,496	22.7	24,994	2,660	26.7					
MAY	28,600	3,172	22.8	29,746	2,838	21.0	28,554	2,444	26.8	26,464	2,611	21.3	28,073	2,693	19.7					
JUNE	31,492	2,912	20.1	29,468	2,854	21.2	29,397	2,536	23.6	27,105	2,698	18.2	30,965	2,995	29.2					
SUB-TOTAL ■	86,757	8,584		87,389	8,337		83,857	7,414		78,031	7,805		84,032	8,348	¼ ■					
SUB-TOTAL ■	161,533	16,014		163,338	14,933		158,566	13,274		149,079	14,622		152,827	15,489	½ ■					
JULY	30,268	3,012	17.8	31,865	2,889	19.3	28,142	2,835	17.0	27,095	3,107	18.6	32,649	3,297	17.2					
AUGUST	30,488	3,076	14.5	30,678	2,989	19.5	30,594	2,836	21.0	29,833	3,113	17.8	31,623	3,075	23.8					
SEPTEMBER	26,665	2,690	18.4	29,753	2,565	26.7	26,837	2,372	20.5	26,344	2,604	23.6	27,387	2,904	22.0					
SUB-TOTAL ■	87,421	8,778		92,296	8,443		85,573	8,043		83,272	8,824		91,659	9,276	¼ ■					
SUB-TOTAL ■	248,954	24,792		255,634	23,376		244,139	21,317		232,351	23,446		244,486	24,765	¾ ■					
OCTOBER	24,588	3,231	20.1	29,474	2,688	22.7	25,755	2,637	31.1	26,784	3,071	22.3	25,698	3,373	19.2					
NOVEMBER	23,374	2,870	28.5	27,009	2,705	19.3	24,610	2,788	20.8	24,130	3,040	19.5	24,299	2,910	21.2					
DECEMBER	26,921	2,282	20.8	27,153	2,201	25.5	25,893	2,641	24.5	24,669	3,055	21.6	24,642	3,010	16.9					
SUB-TOTAL ■	74,883	8,383		83,636	7,594		76,258	8,102		75,583	9,166		73,639	9,293	¼ ■					
GRAND TOTAL	326,857	33,175	22.7	339,270	30,970	22.8	320,387	29,419	24.6	307,934	32,612	22.6	319,125	34,058	23.9					

A-4

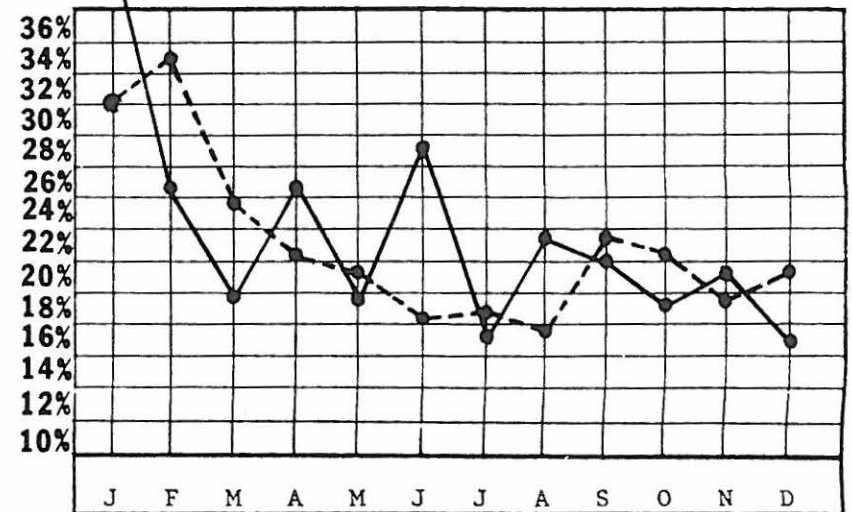


CRIMES REPORTED

● — 1979
● - - 1980



CALLS FOR SERVICE



CLEARANCES

ADULT ARRESTS – BY AGE AND SEX

CLASSIFICATION OF OFFENSES		18	19	20	21	22	23	24	25 - 29	30 - 34	35 - 39	40 - 44	45 - 49	50 - 54	55 - 59	60 - 64	65 +	Total
		MURDER, NON-NEG MANSLAUGHTER	M	1	1	1	3	5	2	1	4	6	3	0	1	1	1	0
	F	0	0	0	1	0	0	0	1	0	0	0	2	0	0	0	1	5
MANSLAUGHTER BY NEGLIGENCE	M	0	0	0	1	0	0	1	0	0	0	0	1	0	0	0	0	3
	F	0	0	0	0	0	0	0	0	0	0	0	0	0	0	0	0	0
FORCIBLE RAPE	M	4	3	3	3	11	2	0	15	10	3	1	1	1	1	1	0	59
	F	0	0	0	0	0	0	0	0	0	0	0	0	0	0	0	0	0
ROBBERY	M	32	31	25	27	30	14	18	66	35	8	2	2	5	2	0	0	297
	F	3	6	6	4	5	0	3	13	4	1	1	0	0	0	0	0	46
AGGRAVATED ASSAULT	M	11	13	12	14	14	8	13	34	28	11	14	4	2	2	3	1	184
	F	0	0	1	0	1	1	2	6	4	1	2	2	1	0	0	1	46
BURGLARY B OR E	M	52	71	46	44	31	23	28	70	35	9	4	3	4	1	0	0	421
	F	2	1	1	0	0	1	0	3	3	1	1	0	0	0	0	0	13
LARCENY-THEFT EXCEPT AUTO	M	90	92	50	62	53	49	51	173	92	45	48	21	18	15	2	6	867
	F	43	32	42	41	34	40	26	92	35	29	16	4	19	14	6	9	482
AUTO THEFT	M	9	0	8	2	5	7	1	21	12	3	4	0	1	1	0	0	74
	F	0	1	1	1	0	1	0	4	1	1	0	1	0	0	0	0	11
OTHER ASSAULTS	M	72	92	106	93	109	101	91	350	227	125	97	66	45	26	12	7	1,619
	F	9	24	17	18	27	14	13	42	34	15	7	13	9	3	3	4	252
ARSON	M	0	1	1	0	0	0	1	2	1	1	2	0	0	1	0	0	10
	F	0	0	0	0	0	0	0	1	0	0	0	0	0	0	0	0	1
FORGERY AND COUNTERFEITING	M	3	5	7	8	6	3	5	24	22	9	3	3	2	1	0	0	101
	F	3	7	3	2	1	6	5	13	4	1	0	0	0	0	1	0	46
FRAUD	M	1	7	13	11	14	23	20	78	65	40	23	10	10	4	1	1	321
	F	2	6	4	11	7	14	8	51	24	14	14	6	1	1	2	0	165

ADULT ARRESTS - BY AGE AND SEX

CLASSIFICATION OF OFFENSES		18	19	20	21	22	23	24	25-29	30 - 34	35 - 39	40 - 44	45 - 49	50 - 54	55 - 59	60 - 64	65 +	Total
STOLEN PROPERTY BUY, REC., POSS.	M	28	35	26	28	16	12	14	52	21	14	8	6	2	0	1	1	264
	F	1	2	0	0	3	3	6	4	4	4	1	0	1	0	0	0	29
VANDALISM	M	29	20	14	11	3	9	7	38	20	3	6	2	1	0	0	1	164
	F	0	2	0	0	0	0	1	7	3	2	0	0	0	0	0	0	15
WEAPONS CARRYING, POSS.	M	20	22	10	17	15	15	23	65	55	25	28	19	11	9	6	4	344
	F	1	2	1	4	3	4	4	6	6	2	2	2	0	1	1	0	39
PROSTITUTION COMMER. VICE	M	3	5	11	4	2	3	2	6	4	1	0	0	1	1	0	0	43
	F	62	43	43	39	48	22	24	40	13	3	2	0	0	0	0	0	339
SEX OFFENSES EX. RAPE, PROS.	M	0	11	8	4	7	4	4	27	19	3	4	6	8	1	1	0	107
	F	2	2	12	6	4	1	0	6	4	0	0	0	0	0	1	0	38
DRUG ABUSE VIOLATIONS TOTAL	M	12	17	22	18	19	12	21	72	44	25	12	4	3	4	0	0	285
	F	2	5	4	10	4	3	2	9	11	7	3	2	0	0	0	0	62
SALE/MANUFAC'G SUBTOTAL	M	5	10	7	7	8	7	9	40	30	9	5	2	1	3	0	0	143
	F	1	2	1	6	1	3	1	4	6	6	1	1	0	0	0	0	33
OPIUM, COCAINE AND DERIVATIVE	M	1	1	1	0	1	1	3	4	3	2	2	0	0	1	0	0	20
	F	0	0	0	1	0	0	0	0	2	0	0	0	0	0	0	0	3
MARIJUANA	M	2	4	3	6	2	3	4	13	11	1	2	1	1	0	0	0	53
	F	0	0	0	1	1	1	0	0	1	1	1	0	0	0	0	0	6
SYNTHETIC NARCOTICS	M	1	1	2	0	2	1	1	1	3	0	1	0	0	0	0	0	13
	F	0	0	0	1	0	1	0	0	0	1	0	0	0	0	0	0	3
OTHER NON- NARCOTIC DRUGS	M	1	4	1	1	3	2	1	22	13	6	0	1	0	2	0	0	57
	F	1	2	1	3	0	1	1	4	3	4	0	1	0	0	0	0	21
POSSESSION SUBTOTAL	M	7	7	15	11	11	5	12	32	14	16	7	2	2	1	0	0	142
	F	1	3	3	4	3	0	1	5	5	1	2	1	0	0	0	0	29

ADULT ARESTS - BY AGE AND SEX

CLASSIFICATION OF OFFENSES		18	19	20	21	22	23	24	25 - 29	30 - 34	35 - 39	40 - 44	45 - 49	50 - 54	55 - 59	60 - 64	65+	Total
OPIUM, COCAINE AND DERIVATIVE	M	0	1	0	1	1	1	2	7	2	4	1	1	1	0	0	0	22
	F	1	1	1	2	2	0	0	1	2	0	0	1	0	0	0	0	11
MARIJUANA	M	4	1	8	4	4	2	5	12	5	4	3	0	0	1	0	0	53
	F	0	0	1	0	1	0	0	1	0	0	1	0	0	0	0	0	4
SYNTHETIC NARCOTICS	M	3	4	4	5	3	1	5	10	6	6	3	1	0	0	0	0	51
	F	0	2	0	1	0	0	1	3	3	1	1	0	0	0	0	0	12
OTHER NON-NARCOTIC DRUGS	M	0	1	3	1	3	1	0	3	1	2	0	0	1	0	0	0	16
	F	0	0	1	1	0	0	0	0	0	0	0	0	0	0	0	0	2
GAMBLING	M	0	3	2	0	0	0	0	0	2	1	2	2	4	1	1	0	18
	F	0	0	0	0		0	0	0	0	0	0	1	1	0	0	0	2
BOOKMAKING	M	0	0	1	0	0	0	0	0	0	0	0	0	1	0	0	0	2
	F	0	0	0	0	0	0	0	0	0	0	0	0	0	0	0	0	0
NUMBERS AND LOTTERY	M	0	1	1	0	0	0	0	0	0	0	0	0	1	0	0	0	3
	F	0	0	0	0	0	0	0	0	0	0	0	0	1	0	0	0	1
ALL OTHER GAMBLING	M	0	2	0	0	0	0	0	0	2	1	2	2	2	1	1	0	13
	F	0	0	0	0	0	0	0	0	0	0	0	1	0	0	0	0	1
OFFENSES VS. FAMILY & CHILD	M	2	1	3	10	3	5	1	23	20	17	11	3	1	2	0	0	102
	F	2	1	0	0	2	2	1	1	2	0	1	2	0	0	0	0	14
DRIVING UNDER THE INFLUENCE	M	78	85	116	116	113	101	113	409	242	170	122	106	97	70	41	33	2,012
	F	5	13	9	8	8	8	10	35	21	26	22	6	9	6	5	4	195
LIQUOR LAWS	M	2	4	3	4	4	1	3	7	3	2	1	2	1	0	1	1	39
	F	0	1	4	0	1	1	0	3	1	0	1	0	1	0	0	0	13
DRUNKENNESS	M	79	68	79	74	80	76	65	244	160	112	83	81	92	94	42	34	1,463
	F	4	7	11	10	10	11	11	37	15	17	7	8	19	9	10	8	194

ADULT ARRESTS - BY AGE AND SEX

CLASSIFICATION OF OFFENSES		18	19	20	21	22	23	24	25 - 29	30 - 34	35 - 39	40 - 44	45 - 49	50 - 54	55 - 59	60 - 64	65+	Total
DISORDERLY CONDUCT	M	30	21	19	13	10	9	10	47	28	18	11	8	8	1	2	0	235
	F	4	6	5	7	2	7	4	10	10	4	8	1	3	2	0	1	74
ALL OTHER OFFENSES EXCEPT TRAFFIC	M	72	45	43	42	39	46	32	120	64	33	17	15	11	12	6	4	601
	F	11	8	7	7	10	4	8	18	12	9	5	2	0	2	0	0	103
TOTAL MALE + FEM. IN EACH AGE GROUP		786	822	799	778	759	668	652	2,349	1,427	818	596	418	393	288	149	121	11,823
	M																	
	F																	
	M																	
	F																	
	M																	
	F																	
	M																	
	F																	
	M																	
	F																	
	M																	
	F																	

ADULT ARRESTS - BY RACE

CLASSIFICATION OF OFFENSES	White	Negro	Indian	Japa- nese	Chi- nese	All Others												
MURDER, Non-NEG MANSLAUGHTER	10	22				3												
MANSLAUGHTER BY NEGLIGENCE	1	2																
FORCIBLE RAPE	20	35				4												
ROBBERY	87	249				7												
AGGRAVATED ASSAULT	91	105	1			9												
BURGLARY B O R E	215	203				16												
LARCENY - THEFT EXCEPT AUTO	627	670				52												
AUTO THEFT	44	38				3												
OTHER ASSAULTS	1,020	758				93												
ARSON	8	3																
FORGERY AND COUNTERFEITING	56	89				2												
FRAUD	280	194				12												

ADULT ARRESTS - BY RACE

CLASSIFICATION OF OFFENSES	White	Negro	Indian	Japa- nese	Chi- nese	All Others												
STOLEN PROPERTY BUY, SELL., POSS.	128	156				9												
VANDALISM	123	47				9												
WEAPONS CARRYING, POSS.	148	214				21												
PROSTITUTION COMMER. VICE	129	239				14												
SEX OFFENSES EX. RAPE, PROS.	94	9				2												
DRUG ABUSE VIOLATIONS TOTAL	199	133				15												
SALE/MANUFAC'G SUBTOTAL	108	59				9												
OPIUM, COCAINE AND DERIVATIVE	16	4				3												
MARIJUANA	37	17				5												
SYNTHETIC NARCOTICS	10	6																
OTHER NON- NARCOTIC DRUGS	45	32				1												
POSSESSION SUBTOTAL	91	74				6												

ADULT ARRESTS - BY RACE

CLASSIFICATION OF OFFENSES	White	Negro	Indian	Japa- nese	Chi- nese	All Others													
OPIUM, COCAINE AND DERIVATIVE	15	15				3													
MARIJUANA	30	26				1													
SYNTHETIC NARCOTICS	33	29				1													
OTHER NON-NARCOTIC DRUGS	13	4				1													
GAMBLING	2	17				1													
BOOKMAKING	1	1																	
NUMBERS AND LOTTERY	1	3																	
ALL OTHER GAMBLING		13				1													
OFFENSES VS. FAMILY + CHILD	68	42				6													
DRIVING UNDER THE INFLUENCE	1,700	386				121													
LIQUOR LAWS	33	12				7													
DRUNKENNESS	1,091	469	1			96													

A-11

JUVENILE ARRESTS— BY AGE, SEX, AND RACE

CLASSIFICATION
OF OFFENSES

		10/un.	11-12	13-14	15	16	17	Total		White	Negro	Indian	Chi- nese	Japa- nese	All Other			
MURDER, NON-NEG MANSLAUGHTER	M	0	0	0	0	1	1	2	M+F	1	2							
	F	0	0	0	0	1	0	1										
MANSLAUGHTER BY NEGLIGENCE	M	0	0	0	0	0	0	0										
	F	0	0	0	0	0	0	0										
FORCIBLE RAPE	M	0	2	1	5	4	8	20	M+F	5	15							
	F	0	0	0	0	0	0	0										
ROBBERY	M	3	5	10	9	17	30	74	M+F	30	51					1		
	F	0	0	2	4	0	2	8										
AGGRAVATED ASSAULT	M	1	8	8	7	10	11	45	M+F	22	35					3		
	F	3	2	3	1	4	2	15										
BURGLARY - B OR E	M	9	15	37	33	46	56	196	M+F	153	50					9		
	F	0	5	5	4	0	2	16										
LARCENY-THEFT EXCEPT AUTO	M	63	93	194	99	145	157	751	M+F	637	387	1				35		
	F	18	34	75	61	56	65	309										
AUTO THEFT	M	0	1	8	32	25	14	80	M+F	61	23					7		
	F	0	1	2	4	1	3	11										
OTHER ASSAULTS	M	40	58	119	68	90	116	491	M+F	443	202	1				35		
	F	14	24	62	30	39	21	190										
ARSON	M	6	4	5	3	2	5	25	M+F	23	5					1		
	F	1	0	1	0	1	1	4										
FORGERY AND COUNTERFEITING	M	0	0	0	1	4	2	7	M+F	14	2							
	F	0	0	1	1	4	3	9										
FRAUD	M	0	0	1	0	2	8	11	M+F	9	3							
	F	0	0	0	0	1	0	1										

JUVENILE ARRESTS - BY AGE, SEX, AND RACE

CLASSIFICATION OF OFFENSES		10/un.	11-12	13-14	15	16	17	Total		White	Negro	Indian	Chi- nese	Japa- nese	All Other			
STOLEN PROPERTY BUY, REC., POSS.	M	4	9	27	17	21	22	100	M+F	69	40				3			
	F	1	1	2	1	2	5	12										
VANDALISM	M	84	69	98	46	45	49	391	M+F	331	78				17			
	F	2	2	17	3	4	7	35										
WEAPONS CARRYING, POSS.	M	0	0	6	5	7	12	30	M+F	23	9				1			
	F	0	0	0	0	3	0	3										
PROSTITUTION, COMMER. VICE	M	0	0	0	1	1	3	5	M+F	9	13							
	F	0	0	1	3	6	7	17										
SEX OFFENSES EX. RAPE, PROS.	M	6	5	13	6	4	6	40	M+F	22	21							
	F	0	0	0	1	0	2	3										
DRUG ABUSE VIOLATIONS TOTAL	M	1	3	15	10	20	16	65	M+F	88	10				2			
	F	0	0	14	7	11	3	35										
SALE/MANUFAC'G SUBTOTAL	M	0	1	4	2	5	2	14	M+F	13	1				1			
	F	0	0	0	0	1	0	1										
MARIJUANA	M	0	0	0	0	3	0	3	M+F	3								
	F	0	0	0	0	0	0	0										
SYNTHETIC NARCOTICS	M	0	0	0	1	0	1	2	M+F	2								
	F	0	0	0	0	0	0	0										
OTHER NON-NAR- COTIC DRUGS	M	0	1	4	1	2	1	9	M+F	8	1				1			
	F	0	0	0	0	1	0	1										
POSSESSION SUBTOTAL	M	1	2	11	8	15	14	51	M+F	75	9				1			
	F	0	0	14	7	10	3	34										
OPIUM, COCAINE AND DERIVATIVE	M	0	0	1	0	0	0	1	M+F	1								
	F	0	0	0	0	0	0	0										

JUVENILE ARRESTS - BY AGE, SEX AND RACE

CLASSIFICATION OF OFFENSES		10/un.	11-12	13-14	15	16	17	Total		White	Negro	Indian	Chi- nese	Japa- nese	All Other			
		M	F	M	F	M	F	M	F	M+F								
MARIJUANA	M	1	2	7	5	11	9	35	M+F	52	5				1			
	F	0	0	10	6	6	1	23										
SYNTHETIC NARCOTICS	M	0	0	2	3	3	5	13	M+F	18	4							
	F	0	0	4	1	3	1	9										
OTHER NON-NAR-COTIC DRUGS	M	0	0	1	0	1	0	2	M+F	4								
	F	0	0	0	0	1	1	2										
OFFENSES VS. FAMILY + CHILD	M	0	0	0	1	2	2	5	M+F	13	1							
	F	0	0	3	4	0	4	9										
DRIVING UNDER THE INFLUENCE	M	0	0	0	0	9	24	33	M+F	30	1				4			
	F	0	0	0	0	0	2	2										
LIQUOR LAWS	M	0	0	2	5	6	8	21	M+F	33	2				3			
	F	0	0	0	0	7	10	17										
DRUNKENNESS	M	0	0	4	10	23	38	75	M+F	89	4				6			
	F	0	2	9	3	5	5	24										
DISORDERLY CONDUCT	M	76	76	124	73	74	74	497	M+F	485	141				20			
	F	15	31	46	27	21	9	149										
ALL OTHER EX TRAFFIC	M	36	37	85	73	79	77	387	M+F	405	162			1	25			
	F	5	11	53	55	47	35	206										
CURFEW LOITER-ING VIOLATIONS	M	0	1	3	4	3	13	24	M+F	38	8				2			
	F	0	0	4	2	6	12	24										
RUN-AWAYS	M	8	34	126	78	76	49	371	M+F	734	279				68			
	F	2	21	229	202	167	89	710										
M+F TOTALS-AGE & SEX AND RACE	M	398	554	1,415	997	1,102	1,090	5,556		3,767	1,544	2		1	242			
	F																	

CONVERSION CHART – CENSUS TRACKS TO REPORTING AREAS

Census Track	Reporting Areas													
2	426	427	428	425	424	422								
3	432	433	434	431	430	429	423							
4	442	468	437	439	436	435								
6	467	466	465	464	463	467								
7	459	460	461	462	458	456	455	454	453	452	457	935		
8	104	103	105	102	101									
9	319	318	469	317	445	446	447							
10	324	325	373	372	371	320								
11	331	329	378	377	376	450	330	449	451					
12	315	311	345	337										
13.01	577	579	581	580	576									
13.02	578													
13.03	474													
13.04	610	473	472	471	470	483								
14	480	477	476	978										
15	107	115	481	106	479	478	475							
16	113	114	112	110	109	108	111							
17	334	335	348	349	350									
18	338	339	351	352	337	336								
19	343	342	340	341										
20	344	346	347	354										
21	118	125	124	627	132	482	117	116						
22	123	122	120	121	119									
23	131	130	129	128	127	126								
24.01	614	615	616	613	612									
24.02	619	620	618	617										
25	624	626	625	623	622	621								
26	631	143	144	633	632	630	629	628						
27	136	137	134	135										
28	138	140	139											
29	360	361	364	363										
30	353	356	359	362	358	355								
31	656	655	654											
32	662	659	658	657										
33	670	671	667	664	665									
34	148	147	674	672	673	146	634	145						
35	663	661	660	653										
36	690	689	692	688	668	666	669							
37	151	149	150	675										
38	152	154	721											
39	713	710	708	706	704	703	705	707						
40	717	718	716	711										
41	155	729	724	723	722									
42	728	727	726	725										
43.01	746	747												
43.02	709	749	750	748										
44	715	714	752	712										
45.01	753	751	769	770										
45.03	765	760	761	757	756									
45.04	766	767	771	772	768									
46	201	203	205	204	202									
47.01	206	210	211	209	208									
47.02	207	215	214	213	212									
48	218	220	221	219	217	216								
49	225	224	223	222										
50	228	227	226											
51	231	235	233	234	232	230	229							
52	241	243	242	240	238	239								
53	237	245	244	236										
54	731	732	733	730	719	720	738							
55.01	301	302	305	304	303									
55.02	307	312	311	310	306									
55.03	309	314	313	316										
56	308	420	407	448	421	408	308							
57.01	403	412	402	404	401	411								
57.02	417	415	414	413	410	405	409	416	419	418	406			
57.03	443	444	441	440	438									
58.01	514	513	512	510	511									
58.02	529	531	532	524	530	528	527	526						
59.01	509	508	507	506	505									
59.02	524	525	523	522	521									
60	540	542	541											
61	545	546	547	544	543									
62	548	550	549											
63	566	571	572	570	565									
64	564	567	568	563	561	559								
65	569	563	562	560										
66	611	648	678	687	686	677	647							
67	650	651	652											
68	701	702	745											
69	764	763	759											
72.01	744	743	773	776	780	782	781	777	775	778	779	784	783	
72.03	789	755	793	799	798	795	791	796	792					
73	683	682	736	737	754	740	742	696	685	684	696	739	695	679
74	645	649	646	643	640	641	642	644						
75	608	609	607	606										
77	558	556	557	558	575	574	573	555	554					
78	539	538	536	535	537									
79.01	503	504	502	501										
79.02	519	520	517	518	516									
80	515													
83.01	533	534	551											
83.02	552	553												
85	603	605	604	601	602									
86	638	639	637	636	635									

