

T O L E D O

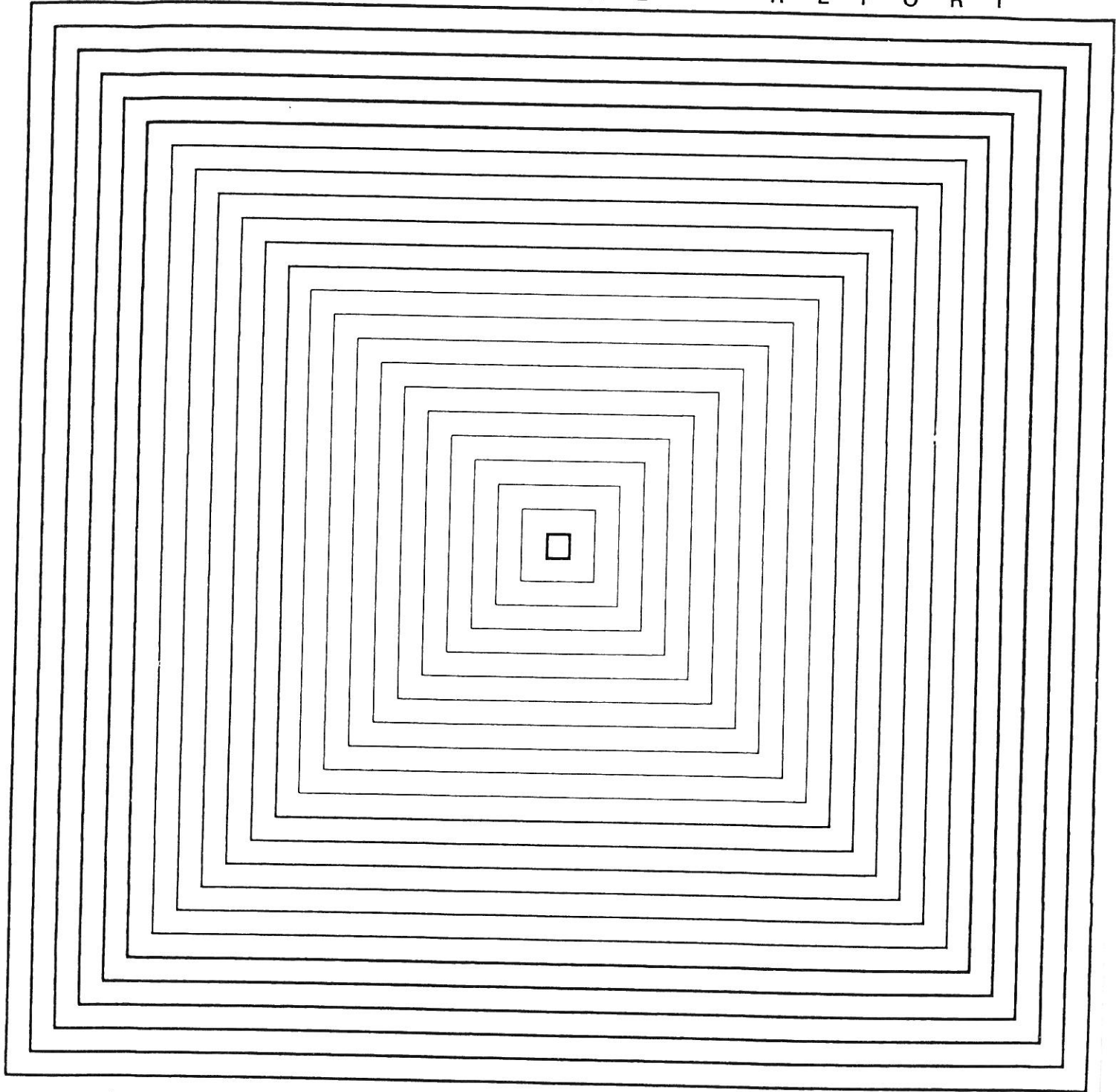
P O L I C E

D I V I S I O N

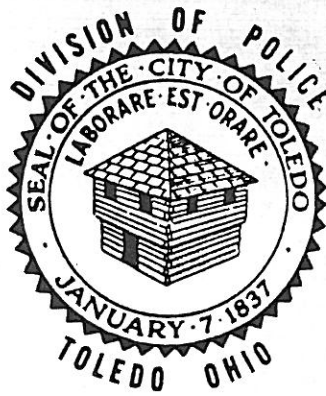
1 9 8 2

A N N U A L

R E P O R T



PREPARED BY THE PLANNING AND RESEARCH UNIT



CITY OF TOLEDO OHIO



DAVID A. BOSTON
City Manager

DIVISION OF POLICE
SAFETY BUILDING
525 No. Erie Street

JOHN MASON
Chief of Police
LEADS OH0480700

C. E. Riser
Safety Director

Commissioner - Traffic Engineering

To: David A. Boston, City Manager

Through: C. E. Riser, Safety Director; Commissioner - Traffic Engineering

From: John Mason, Chief of Police

Subject: 1982 Annual Report of the Toledo Police Division

The Annual Report of the Toledo Police Division for the year 1982 is herewith submitted.

The past year, during which the city was plagued with many problems, was still encouraging in many respects. A significant decrease in Part I Crimes was recorded in Toledo in 1982. Crimes Against Persons were down 11.6%. The largest decrease being in the category of murder which was down 56.4%. Crimes Against Property were down 11.3%, with only the category of Auto Theft showing any increase.

There was a 4.6% decrease in the total number of traffic accidents in 1982. I am happy to report a 11.42% decrease in fatal accidents, and a 20.52% decrease in fatalities.

All residents of Toledo, not just those in positions of public responsibility, can be proud of the skill, dedication, and professionalism of the police officers of this division. Their commitment to insuring the personal safety and protecting the private property of our citizens is an enduring source of satisfaction to me. Other employees that make up the division also share in this commitment to quality law enforcement and carry out their responsibilities with the same enthusiasm as the sworn personnel.

As an example of the concern the members of the Police Division have for their community, they worked shoulder to shoulder with other city workers to help pass an increase in the payroll income tax for the City of Toledo.

On the following pages are presented the highlights and achievements of the Toledo Police Division in 1982. We will continue to respond to the challenges on insuring public safety within the community and upholding the high standards of service that our citizens have come to expect.

Respectfully submitted,

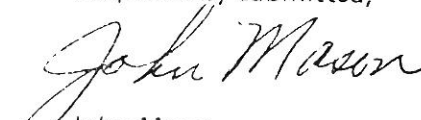

John Mason
Chief of Police

TABLE OF CONTENTS

Organizational Chart - City Of Toledo	1
Organizational Chart - Toledo Police Division	2

FIELD OPERATIONS BUREAU

Statistics Field Operations Bureau - Uniformed Patrol Shifts	3
Traffic Section	
1981 - 1982 Comparisons, Vehicle Crash Experience	4
Hourly Breakdown, All Accidents in 1982	5
Total Traffic Section Statistics	6
Comparison Statistics -Traffic Section Personnel & Operations Personnel	6
Breakdown of Fatal Accidents by Shift	6
Hit Skip Unit	7
Traffic Section Financial Report 1982	7
Total Analysis of all Accidents in 1982 by Day of Month	8

POLICE ADMINISTRATION

Internal Affairs Section	9
------------------------------------	---

INVESTIGATIVE SERVICES BUREAU

Crimes Against Persons Section	10
Crimes Against Property Section	11
Sting Operation - " C.A.P.R.I.'S. "	12
Vice/Metro Section	13

SUPPORT SERVICES BUREAU

Property Management Section	15
Communications Section	16
Records Section (I.D.)	17
Regional Crime Lab	18

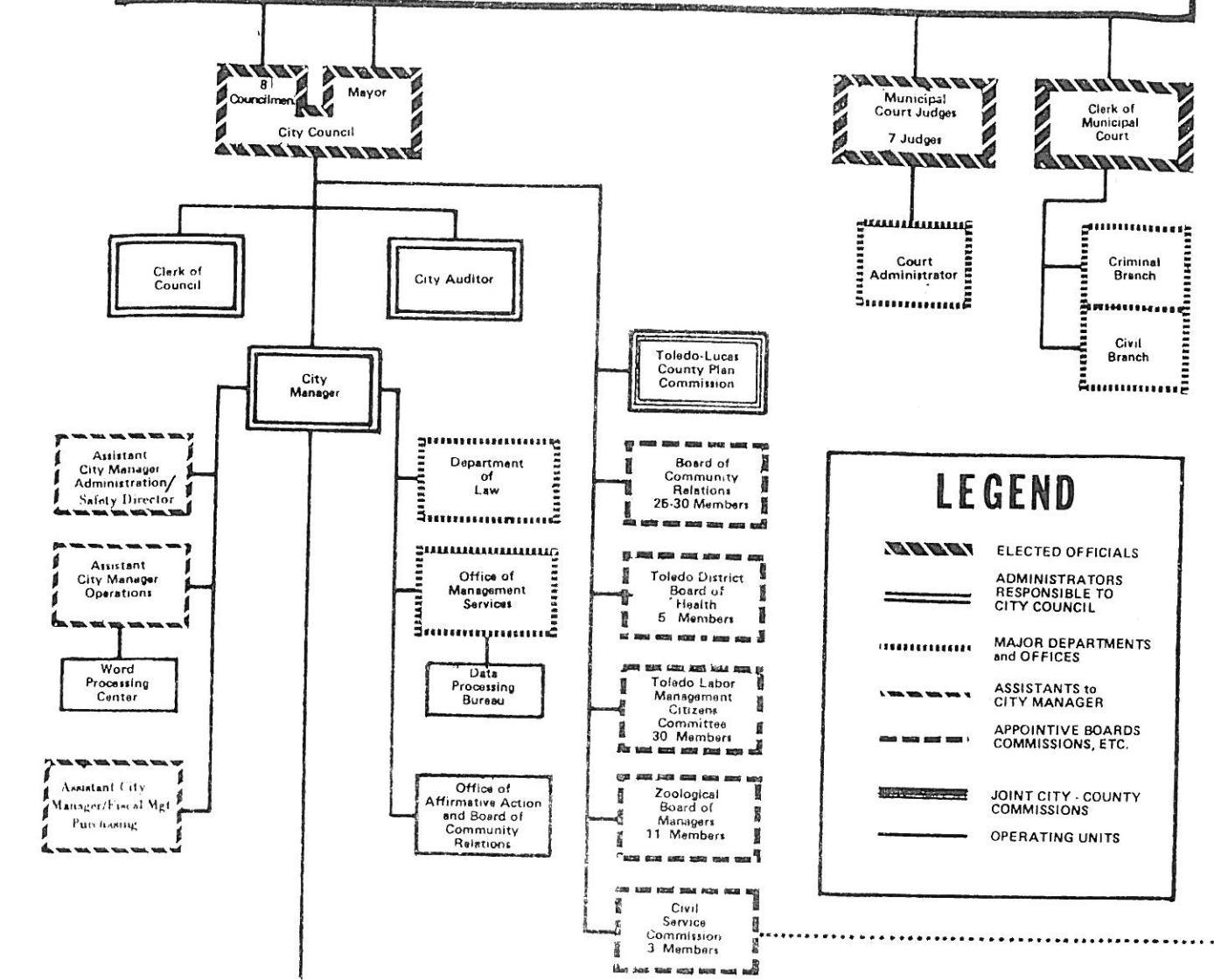
ADMINISTRATIVE SERVICES BUREAU

Community Relations Section	19
School Safety Unit	20
Crime Prevention Section	20
Training & Recruitment Section	21








APPENDIX

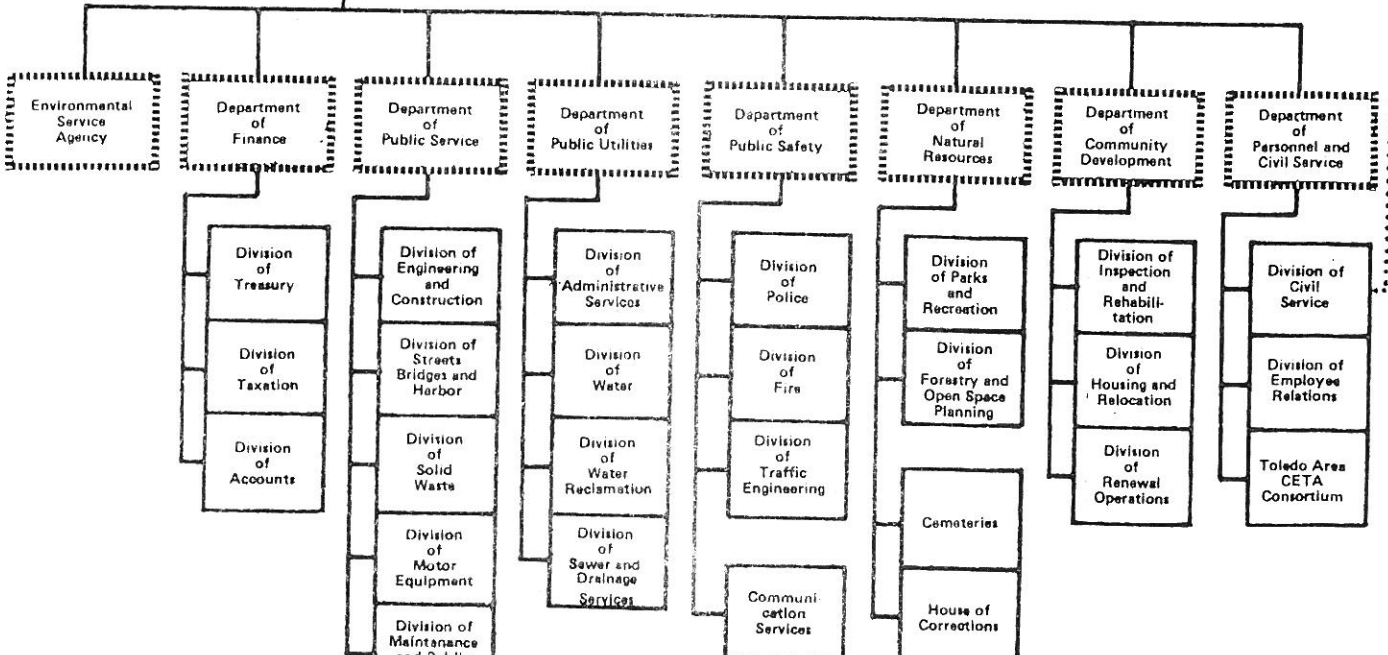
Comparative Workload Study	A-1
--------------------------------------	-----

VOTERS



LEGEND

-  ELECTED OFFICIALS
-  ADMINISTRATORS RESPONSIBLE TO CITY COUNCIL
-  MAJOR DEPARTMENTS and OFFICES
-  ASSISTANTS to CITY MANAGER
-  APPOINTIVE BOARDS COMMISSIONS, ETC.
-  JOINT CITY - COUNTY COMMISSIONS
-  OPERATING UNITS



ORGANIZATION

CITY OF TOLEDO, OHIO

F
I
E
L
D
O
P
E
R
A
T
I
O
N
S
B
U
R
E
A
U

FIELD OPERATIONS BUREAU

Add Harbor Patrol Section

Statistical Comparison of Uniformed Patrol Activities for 1981/1982

There were a total of 11, 984 bookings at the Lucas County Corrections Center by the Toledo Police Division personnel in 1982.

Type Of Arrest	1981	1982 *
On View Felonies	2,581	910
On View Misdemeanors	9,040	6,467
Warrants Served	9,688	4,612

*Out of 11,984
Thou man*

* The 1981 figures reflect the total number of charges placed against persons booked. Additionally, to assist the Sheriff's Department in meeting federal court requirements, the police division instituted a field citation procedure to reduce the number of persons booked.

The 1982 figures reflect the actual number of persons booked.

Breakdown of Misdemeanor Arrests For 1982

Type Of Arrest	Number	Percent of Total
Driving While Intoxicated	1,545	23.9 %
Disorderly Conduct - Intoxication	1,500	23.2 %
Soliciting/Prostitution/Loitering	820	12.69 %
Domestic Violence	374	5.89 %
Others (weapons/assaults/etc.)	2,228	34.46 %
Totals	6,467	100.0 %

Total Misdemeanor Arrests For 1982	6,467
Number of Misdemeanants Cited	1,714
Percent of Misdemeanor Citations to Arrests	26.5%

*What about contacts?
Home checks, calls for service,
3
Something should be paid*

VEHICLE CRASH EXPERIENCE IN 1982 COMPARED TO 1981

1982

1981

JK

MONTH	Property Damage	Injury Acc.	Fatal Acc.	Fatalities	TOTALS	Property Damage	Injury Acc.	Fatal Acc.	Fatalities	TOTALS
JAN	1,507	191	1	1	1,699	1,474	349	4	4	1,827
FEB	1,921	316	4	4	2,141	1,086	283	2	3	1,371
MAR	1,174	369	4	4	1,547	1,086	283	3	3	1,457
APR	1,027	357	2	2	1,386	1,076	341	2	2	1,419
MAY	1,035	390	2	2	1,427	1,098	396	3	3	1,497
JUN	1,047	385	1	1	1,433	1,120	246	3	4	1,549
JUL	893	396	4	4	1,294	1,124	304	2	2	1,430
AUG	749	375	3	3	1,127	1,073	328	3	3	1,404
SEP	929	362	4	4	1,295	1,154	320	1	2	1,475
OCT	1,001	397	3	3	1,361	1,286	378	5	6	1,668
NOV	1,118	386	1	1	1,515	1,066	262	3	3	1,331
DEC	1,177	474	2	2	1,653	1,431	368	4	4	1,803
TOTALS	13,485	4,308	31	31	17,876	14,136	4,060	35	39	18,231

COMPARISON STATISTICS 1982 OVER 1981

PROPERTY DAMAGE A REDUCTION OF 4.82 %
 INJURY ACCIDENTS AN INCREASE OF 6.10 %
 FATAL ACCIDENTS A REDUCTION OF 11.42 %
 FATALITIES A REDUCTION OF 20.52 %
 TOTAL ACCIDENTS A REDUCTION OF 4.60 %

HOURLY BREAKDOWN OF ACCIDENTS FOR 1982

TIME OF DAY	DAY OF WEEK							TOTAL
	SUN	MON	TUE	WED	THU	FRI	SAT	
0001 - 0100	145	55	53	45	78	86	168	630
0101 - 0200	116	25	34	39	48	55	128	445
0201 - 0300	136	30	43	35	55	81	187	567
0301 - 0400	55	11	13	20	22	34	49	204
0401 - 0500	37	15	24	21	14	34	24	169
0501 - 0600	23	15	21	14	15	28	17	133
0601 - 0700	79	50	61	59	36	48	20	353
0701 - 0800	40	101	160	169	112	134	39	755
0801 - 0900	29	107	146	174	116	144	51	767
0901 - 1000	46	91	88	124	102	108	63	622
1001 - 1100	42	112	118	93	108	113	88	674
1101 - 1200	70	130	162	127	164	175	126	954
1201 - 1300	110	135	133	154	154	199	128	1,053
1301 - 1400	101	113	142	135	162	190	116	1,263
1401 - 1500	112	191	190	188	159	275	148	1,263
1501 - 1600	120	203	234	245	205	274	136	1,416
1601 - 1700	79	213	259	240	214	281	129	1,415
1701 - 1800	111	164	197	176	163	247	130	1,188
1801 - 1900	86	128	131	134	109	180	139	907
1901 - 2000	94	87	122	147	103	152	147	852
2001 - 2100	69	110	101	92	95	141	106	714
2101 - 2200	78	100	92	101	79	141	108	699
2201 - 2300	53	72	65	95	67	155	90	598
2301 - 2400	56	64	61	79	60	147	113	580
TOTALS	1,887	2,322	2,650	2,706	2,440	3,422	2,450	17,877

Maybe a summary
 worst two hour period

The total statistics for the Traffic Section are:

VTO'S	Tags	Miles	Accidents Investigated
3,920	43,080	82,288	1,053

COMPARISON STATISTICS OF TRAFFIC SECTION PERSONNEL AND OPERATIONS PERSONNEL

Should go to this shift

<u>MOVING VIOLATIONS</u>	Number Issued	Percent Issued	<u>PARKING TAGS</u>	Number Issued	Percent Issued
TRAFFIC OFFICERS	3,920	10.79%	TRAFFIC OFFICERS	5,515	8.35%
OPERATIONS OFFICERS	32,400	89.21%	Traffic Aides	37,565	56.87%
			Operations Officers	22,981	34.78%
TOTALS	36,320	100%	TOTALS	66,061	100%

BREAKDOWN OF FATAL ACCIDENTS BY SHIFTS

Shift	1980 No.	1980 %	1981 No.	1981 %	1982 No.	1982 %
0700 X 1500 Hours	9	23.1%	3	35%	4	12.9%
1500 X 2300 Hours	8	20.5%	10	28.6%	14	45.2%
2300 X 0700 Hours	22	56.4%	22	62.9%	13	41.9%
2000 X 0400 Hours	16	45.7%	23	35%	16	51.6%

HIT SKIP UNIT

Total number of Hit Skip Accidents	3,259
Workable hit skip accidents	1,585
Cases cleared with prosecution	545
Cases cleared with no prosecution	189
Cases cleared with no evidence or additional information	68
Stolen cars, no suspects	46
Cases cleared, civil action only	394
Cases still under investigation	492
Walk-in accident reports taken	2,771
Hit-skip accident reports taken	330
Citations issued as result of walk-in reports	82
Citations issued as result of hit-skip accidents	673

TRAFFIC SECTION 1982 ANNUAL REPORT

Revenue

OLD TAGS PAID

\$ 5.00	10,873	\$54,365.00
\$ 7.00	5,198	\$36,386.00
\$10.00	7,373	\$73,698.00
\$15.00	6,402	\$96,025.00
\$15.00	53	\$795.00
\$20.00	71	\$1,420.00
Part Pay	1,023	\$5,354.60
Totals	30,993	\$268,043.60

MISC. REPORTS AND SERVICES

Accident	16,532	\$42,530.00
Fin. Prnt.	277	\$1,378.00
Nam. Chk.	920	\$2,782.00
Crime Rpt.	5,557	\$16,599.00
Photos	123	\$738.00
Totals	23,409	\$64,027.45

NEW TAGS PAID

\$7.00	2,203	\$15,422.00
\$10.00	114	\$1,140.00
\$15.00	1,285	\$19,275.00
\$20.00	57	\$1,140.00
\$20.00	2	\$40.00
Part Pay	295	\$2,302.00
Totals	3,965	\$39,319.00

Tags Paid	34,949	\$307,362.60
Others	23,409	\$ 64,027.45
TOTALS	58,358	\$371,390.05

Credit Card Charges For the Year: (95)

\$ 986.00

Total Revenue From Jan. 1, 1982	\$371,390.05
------------------------------------	--------------

13

DAY of Mo.	Accum. Fatal & Injury Acc (1)	ON - STREET ACCIDENTS										PROPERTY DAM. ACC.			TOTAL (13)	ACCUM. (14)	PRIVATE PROPERTY ACCIDENT (19)			
		FATAL ACCIDENTS					INJURY ACCIDENTS					BIKE (10)	CYCLE (11)	OTHER (12)				PERSONS KILLED OR INJURED		
		PED. (2)	BIKE (3)	CYCLE (4)	OTHER (5)	PED. (6)	BIKE (7)	CYCLE (8)	OTHER (9)	FATAL (15)	INJURY (16)							TOTAL (17)	ACCUM. (18)	
1	164			2	1	5	11	15	135			1	570	735	735	3	245	248	248	
2	337				1	11	4	15	142		1	623	797	1,532	1	278	279	527		
3	421				1	8	7	9	159		1	499	686	2,218	1	278	279	806		
4	644					5	4	5	119		1	479	613	2,831		203	203	1,009		
5	797			1	2	7	6	7	100		2	520	645	3,476	4	178	182	1,191		
6	939					7	3	6	116		1	493	628	4,104	203	203	1,394			
7	1,034					4	3	5	113			490	615	4,719	186	186	1,580			
8	1,174	1				7	4	7	121		2	453	595	5,314	1	203	204	1,784		
9	1,330				1	6	14	7	128		1	518	677	5,991	1	225	226	2,010		
10	1,481	3			1	12	7	5	123		1	491	643	6,634	4	237	241	2,251		
11	1,618				2	5	7	12	110		1	448	585	7,219	2	195	197	2,448		
12	1,768	1				9	7	3	132			491	643	7,862	1	207	208	2,656		
13	1,910					10	9	6	116		1	427	462	8,432	226	226	2,882			
14	2,022	2				11	4	11	84			349	462	8,894	2	159	161	3,043		
15	2,163					7	15	6	113		2	425	568	9,462		218	218	3,261		
16	2,303				1	6	6	4	122		2	437	579	10,041	2	219	221	3,482		
17	2,428					8	5	9	103			388	513	10,554		216	216	3,698		
18	2,548					9	9	5	97		2	366	488	11,042		177	177	3,875		
19	2,669	1				8	4	5	103		1	414	537	11,579	1	192	193	4,068		
20	2,790	2				13	2	7	97		2	450	573	12,152	2	196	198	4,266		
21	2,928					10	6	4	118			377	516	12,668		225	225	4,491		
22	3,084					7	4	6	39		1	465	622	13,290		227	227	4,718		
23	3,242					9	11	10	128		1	435	595	13,885		242	242	4,960		
24	3,396					18	4	10	121		1	410	566	14,451	1	234	235	5,195		
25	3,533			1	1	1	8	11	115			382	519	14,970	2	219	221	5,416		
26	3,656				1	12	4	7	99		1	389	513	15,483	2	188	190	5,606		
27	3,802			1		8	9	5	123		3	427	577	16,060	1	201	202	5,808		
28	3,950					6	5	5	32		2	420	570	16,630		225	225	6,033		
29	4,087				1	8	4	10	114		2	348	488	17,118	1	207	208	6,241		
30	4,240					13	11	8	121		1	297	451	17,569		238	238	6,479		
31	4,339	1				8	5	4	81		2	204	308	17,877	1	168	169	6,648		
Total	4,339			5	14	258	202	224	3,524		23	13,485	17,877	17,877	33	6,615	6,648	6,648		
Yr. to Date		12																		

COLUMN 1The Total Of Columns 2 through 9
 COLUMN 13The Total Of Columns 2 through 12
 COLUMN 14The Accumulated Total of Column 13
 COLUMN 17The Total Of Columns 15 & 16
 COLUMN 18The Accumulated Total of Column 17
 COLUMN 19The Accumulated Total of Private Property Accidents

P
O
L
I
C
É

A
D
M
I
N
I
S
T
R
A
T
I
O
N

INTERNAL AFFAIRS SECTION

CITIZEN COMPLAINT INVESTIGATIONS

	1979	1980	1981	1982
JANUARY	13	25	15	12
FEBRUARY	4	10	17	5
MARCH	14	15	14	18
APRIL	13	10	12	12
MAY	20	10	11	13
JUNE	14	15	14	15
JULY	12	17	16	15
AUGUST	15	19	20	11
SEPTEMBER	4	8	10	20
OCTOBER	7	14	15	11
NOVEMBER	16	16	25	8
DECEMBER	3	9	8	4
TOTALS	135	168	171	144

DIVISION INITIATED INVESTIGATIONS

	1979	1980	1981	1982
	11	7	14	5
	4	6	7	7
	7	4	17	14
	6	8	17	7
	6	9	16	9
	3	6	13	9
	12	7	9	5
	6	13	11	14
	6	10	12	7
	10	24	8	20
	15	7	3	15
	6	15	5	10
	94	116	132	123

Total number of Citizen Initiated Investigations (144) was a decrease of 27 from 1981.

Total number of Division Initiated Investigations (123) was a decrease of 9 from 1981.

Total Investigations (1979) = 229

Total Investigations (1980) = 284

Total Investigations (1981) = 303

Total Investigations (1982) = 267

70 (+) or (-)

I
N
V
E
S
T
I
G
A
T
I
V
E

S
E
R
V
I
C
E
S

B
U
R
E
A
U

**INVESTIGATIVE SERVICES BUREAU
CRIMES AGAINST PERSONS SECTION**

The Crimes Against Persons Section received a total of 12,006 complaints for investigation for the year 1982. This represents an overall increase in the number of complaints received of 440 or 3.8 % from 1981.

However, serious crime; murders, robberies and rapes were doen 324 or 15.7 %.

By virtue of their seriousness, all homicides, robberies and sexual assaults are assigned for investigation. All other complaints are reviewed by a Unit supervisor and selectively assigned for investigation.

	1982	1981	Numerical Change	Percentage Change
<u>HOMICIDE UNIT</u>				
Homicides	27	55	- 28	- 51 %
by Firearm	15	37	- 22	- 59.5 %
All other complaints	9,339	8,471	+ 866	+ 10.2 %
<u>ROBBERY UNIT</u>				
All Robberies	1,458	1,733	- 275	- 15.9 %
Financial Institutions	6	16	- 10	- 62.5 %
<u>PERSONAL ASSAULT UNIT</u>				
Rapes and Attempted Rapes	255	276	- 21	- 7.6 %
All other complaints	925	1,027	- 102	- 9.9 %

POLYGRAPH EXAMINATIONS

The captain and lieutenant of this section conduct polygraph examinations on an as needed basis. For 1982, 110 examinations were conducted.

SCIENTIFIC INVESTIGATION UNIT

	1982	1981
<u>Evidence Technician Unit</u>		
Total Assignments	1,079	679
Crime Scene Assignments		
Latent Fingerprint Search	626	574
Photograph Assignments	606	470
Neutron Activation Analysis Test	23	51
Moulage Casts	2	4
Other	136	169

INVESTIGATIVE SERVICES BUREAU
CRIMES AGAINST PROPERTY SECTION

THEFT UNIT

Grand Theft complaints received	4,264
Petty Theft complaints received	9,590
Misc. complaints received	6,340
Total reports "nixed"	14,482
Total complaints received	20,194
Complaints assigned for investigation	1,582
Complaints handled by "Warrants Pending"	2,814
Complaints unfounded	40
Total offenses reported	2,774
Complaints cleared by arrest	2,820
Complaints exceptionally cleared	2,638
Total complaints cleared	5,458

CHECK UNIT

Complaints received	4,454
Complaints assigned	1,735
Arrests (felony)	605
Exceptionally cleared	500
Warrants by prosecutor (misdemeanors)	2,577

BURGLARY UNIT

Complaints received Residential- 6,642 Commercial- 1,793	8,435
Complaints assigned	3,654
Arrests	480
Extra clearances	1,844
Changes	721
Unfounded	126

AUTO UNIT

Complaints received	2,807
Complaints assigned	914
Auto thefts	1,915
Misc. complaints	892
Arrests	187
Exceptionally cleared	140

ARSON UNIT

Investigations	864
Adults arrested	40
Juveniles arrested	54
Other cases cleared	52

ARSON ARRESTS

	<u>ADULTS</u>	<u>JUVENILES</u>	<u>TOTAL</u>
1976	32	35	67
1977	19	21	40
1978	24	33	57
1979	40	68	108
1980	51	33	85
1981	52	33	85
1982	40	54	94

PROPERTY RECOVERY UNIT

OPERATION "CAPRI'S"

The Toledo Police Division and the Office of the Lucas County Prosecutor concluded a fourteen month anti - fencing operation on November 4, 1982. The operations was known as "CAPRI'S". (Caught Again Police Resume Its Stings)

This was the fifth sting operation in the last four years for the City of Toledo and involved five Toledo police officers.

The result of this operation was significant due to the number of people involved; and the different types of drugs and property recovered. The operation officially began in August of 1981. Targets of this operation were the street type criminals believed to be involved in robberies, burglaries, drugs; and also those persons receiving stolen property.

Intelligence gathered from previous sting operations indicated that a significant amount of stolen property was being sold to gold and silver shops along with pawn shops operating inside the city. Giuded by this information the Toledo Police opened a operating gold and silver shop at 3507 Upton Avenue with the thought of attracting that portion of the criminal element involved in the thefts of gold and silver items. The doors opened on November 16, 1981 and was named Capri's. Our undercover officers soon discovered not only could they purchase gold and silver items, but also various other stolen items including cars, television sets and a large quantity of drugs.

Numerous drug buys were being offered to the undercover officers and over three hundred deals were made outside of the shop itself. These purchased drugs included: Marijuana, L.S.D. , Cocaine, Hashish, and Heroin. Several of the customers of the shop admitted selling drugs to the students of a nearby school.

A combined total of over one thousand buys were recorded with the recovery of over \$625,000.00 worth of stolen property and drugs. A total of \$31,000.00 in buy money was used. This results in less than \$.05 spent for every dollar recovered.

The total number of persons who are wanted as a result of this sting operation keeps growing as investigators check out leads produced by this operation. So far, warrants have been used for about 252 suspects and the number will grow as other investigations come to a close.

Hopefully, this type of operation serves to warn the criminal community that the Toledo Police Division cannot be counted on as being a purely defensive force.

INVESTIGATIVE SERVICES BUREAU
YOUTH SERVICES SECTION

OFFENSE	Cited To Court		Cases Adjusted		ADULT ARRESTS	Exceptionally Cleared Complaints	Inactive & Unfounded Complaints	Extra Clearance
	BOYS	GIRLS	BOYS	GIRLS				
Arson & Related Offenses	107	6	157	17	3	192	331	27
Homicide & Assault	149	38	169	47	20	529	348	6
Kidnapping & Extortion	2	0	0	0	0	24	15	2
Narcotics	16	3	12	11	2	1	2	4
Offenses Against Family	209	331	356	521	83	92	39	4
Offenses Against Justice	2	1	1	0	0	0	0	0
Offenses Against Public Peace	47	15	173	89	5	75	41	3
Robbery Burglary Trespassing	265	9	79	15	20	37	267	61
Sex Offenses	2	0	1	1	0	2	1	0
Theft & Fraud	248	39	119	18	29	153	1,602	91
Weapons Control	6	2	6	0	3	4	0	1
Miscellaneous Offenses	1	0	0	0	6	2	3	2
TOTALS	1,054	444	1,073	719	171	1,111	2,649	201

GRAND TOTALS	1,498	1,792	171	1,111	2,649	201
-------------------------	--------------	--------------	------------	--------------	--------------	------------

1981	1,586	2,296	171	934	2,825	1,014
1980	1,586	2,205	154	992	2,988	78
1979	1,736	2,365	130	1,082	3,209	135
1978	1,680	3,177	159	898	3,637	249

VICE - METRO SECTION

During 1982, the Vice Unit stepped up its efforts to win the war against prostitution, gambling and drug related offenses. The Metro Unit concentrated all of its efforts on the ever growing drug problem. Both units of the Vice - Metro Section relied on assistance from the Field Operations Bureau and in addition, the Metro Unit was assisted by agencies other than our own including local, state, and federal agencies. The following figures indicate how successful this section was in 1982:

VICE UNIT

	1981	1982	Numerical Change	Percentage Change
Prostitution Arrests	880	892	+ 12	+ 1.36%
Gambling Arrests	27	53	+ 26	+ 96.30%
Liquor Arrests (Includes Citations)	111	67	- 44	- 39.64%
Drug Related Arrests	133	461	+ 328	+ 246.62%
Miscellaneous Arrests	189	607	+ 418	+ 221.16%
ARREST TOTALS	1,340	2,080	+ 740	+ 55.22%
Liquor Applications Processed*	209	303	+ 94	+ 44.98%

METRO DRUG UNIT	1981	1982	Numerical Change	Percentage Change
Drug Arrests	407	486	+ 79	+ 19.41%
Search Warrants	80	76	- 4	- 5.99%
Drugs Seized-Dollar Amount	\$1,082,771	\$1,772,247	+\$689,476	+ 63.68%
TOTAL CASES	329	486	+ 157	+ 47.72%

*Note: Includes liquor licenses, arcade licenses, and phrenologist license.

S
U
P
P
O
R
T
S
E
R
V
I
C
E
S

B
U
R
E
A
U

PROPERTY MANAGEMENT SECTION

Statistics

	1982	1981	+ or -	+ or - %
Total Fleet Milage	2,202,705	4,922,990	-2,720,240 mi.	-55.26%
Gasoline Consumption	367,125 gal.	407,340 gal.	-40,125 gal.	- 9.85%
Accidents Involving Police Officers	169	192	-23	- 11.98%

Inventory Of Police Vehicles

1	.Crime Lab Van
1	.Mobile Command Post
1	.Harbor Patrol Van
1	.Undercover Van
14	.Police Patrol Wagons
5	.Marked Jeeps
2	.Three Wheeled Motorcycles
89	.Marked Police Cars
87	.Unmarked Police Cars
4	.Marked 4-Wheel Drive Vehicles
1	.Bomb Trailer
206	.Total Fleet

Armory Inventory

751	.Assorted Handguns
176	.Shotguns
36	.Carbines
17	.Rifles
17	.Gas Guns

Police Auctions

Four Police Auctions were held in 1982 bringing a total of \$ 18,389.00 into the General Fund of the City of Toledo.

COMMUNICATIONS SECTION

Area of the City of Toledo	87 square miles
Estimated population of the City of Toledo	354,636
Total incoming telephone calls for 1982	370,723
Calls answered within 25 seconds	352,632
Calls to recorder (after 25 seconds)	18,091
Calls abandoned by the calling party	9,870

OF THE TOTAL INCOMING CALLS, 95.12 % WERE ANSWERED WITHIN 25 SECONDS

ACTIVITIES EACH RELIEF	0600 X 1400	1400 X 2200	2200 X 0600	TOTAL FOR YEAR
Answered Calls For Service (mobile units)	63,697	110,402	116,643	290,742
Answered Calls For Service (compared to 1981)	Decrease Of 9,303	Decrease Of 11,749	Decrease Of 2,066	Decrease Of 22,848

THERE WAS AN OVERALL DECREASE OF 7.28 % IN CALLS FOR SERVICE IN 1982

	1981 TOTAL	1980 TOTAL	+ or -
18 Hour Parking Checks	4,419	4,610	Decrease Of 191
TARTA Checks	2,827	3,955	Decrease Of 1,128
Park Checks	2,056	4,243	Decrease Of 2,187

IN 1982 THERE WERE 4,439 CALLS FOR SERVICE FOR WHICH THERE WERE NO MOBILE UNITS AVAILABLE.

RECORD SECTION ANNUAL REPORT

		1981	1982	Numerical Change
REPORTS DESK	Expeditor Board reports	14,533	15,968	+1,435
	Watch house cards	174	20	-54
	TOTAL REPORTS PROCESSED	85,713	81,203	-4,510
MICROFILM	Reports microfilmed	84	45	-39
	Other microfilm	6	0	-6
	TOTAL MICROFILM	90	45	-45
ARREST/ WARRANT DESK	Warrant grace letters	16,464	15,098	-1,366
	Letters returned-bad address	3,001	2,759	-242
	TOTAL SUMMONED	11,980	5,961	-6,019
NEW WARRANTS PROCESSED	Local Warrants	16,041	16,966	+915
	Outside Warrants	207	4	-203
	TOTAL WARRANTS	16,248	16,960	+712
WARRANTS WITHDRAWN/ RETURNED	Local Warrants	3,813	3,074	-739
	Outside Warrants	251	4	-247
	TOTAL WARRANTS WITHDRAWN	4,064	3,078	-986
	TOTAL ARRESTS PROCESSED	10,830	16,237	+5,407
GUN CONTROL DESK	Total Identification Photocards Processed	8,602	4,609	-3,993
	Fingerprint Processing	20,845	23,377	+2,532
IDENTIFICATION	Film Processed	2,019	2,509	+490
	Contact Photos	752	649	-103
	Enlargements	5,126	9,665	+4,539
	Latent Prints	237	73	-164
	Miscellaneous Functions	7,202	6,460	-742
	Lucas County Prosecutor	1,539	1,585	+46
RECORDS DESK	Jury Lists	3,903	*	-
	Notary Public	1,005	820	-185
	Municipal Probation	3,267	633	-2,634
	Board Of Education	549	-	-549
	Handgun Card Checks	*	2,758	-
	L.C.A.P.D. (checks & reports)	*	1,056	-
	Other Paid Checks	1,611	1,697	+86
	City Licenses	-	347	-
	TOTAL RECORD CHECKS	16,411	12,749	-3,662
	EXPT/RECORDS	TOTAL	652	544
Total Incoming Mail		36,197	33,373	-2,824
MAIL CLERK DESK	Incoming Letters Processed	2,869	3,628	+759
	Outgoing Letters Typed	293	174	-119
	Insurance Reports Copied	5,479	4,065	-1,414
	Settlement of Claims Letters	2,512	2,188	-344
	Stolen Autos Processed	1,845	2,157	+312
AUTO DESK	Recovered Stolen Autos	1,594	1,827	+33
	Vehicles Sold At Auction	25	52	+27

RECORD SECTION ANNUAL REPORT

		1981	1982	Numerical Change
AUTOS TOWED	District 1	1,855	2,120	+265
	District 2	3,226	3,189	-37
	District 3	1,367	1,518	+151
	District 4	1,727	1,371	-356
	District 5	1,037	820	-217
	Kasle Iron (Junks)	12	20	+8
	Heavy Duty Tows	81	77	-4
	TOTAL AUTOS TOWED	9,305	9,115	-190
NORIS USAGE	Warrant Entries	16,248	-	-
	Arrest Entries	12,430	-	-
	ATL Entries	2,038	-	-
	RID Entries (*Nov/Dec only)	532*	3,449	+2,917
	Transfers (*Nov/Dec only)	185*	1,396	+1,211
	Cancellations	17,541	15,370	-2,171
	Modifications	24,059	23,381	-6,678
	Inquiries	226,021	310,900	+84,879
	Other	45,991	-	-45,991
	Additions	-	45,005	-
	Deletions	-	3,189	-
	TOTAL NORIS	349,955	402,690	+52,735
INCOME RECEIVED	Income Received (Gun Control)	\$28,830.00	\$33,900.00	+\$5,070.00
	Income (Insurance Reports)	\$21,691.50	\$16,599.00	-\$5,092.50
	Income (Record Checks)	\$7,955.00	\$2,782.00	-\$5,173.00
	Income (Police Auctions)	\$13,430.00	\$13,715.00	+\$285.00
	Income (Identification)	\$2,045.00	\$1,378.00	-\$667.00
	TOTAL INCOME	\$73,501.50	\$68,374.00	-\$5,127.50

TOLEDO POLICE DIVISION
CRIME LABORATORY

<u>ANALYSIS TYPE -BY CASE</u>	1982	1981	Change
General Analytical Chemistry	28	40	-12
Serological/Microscopy	132	262	-130
Firearms Identification	213	275	-62
Drug Chemistry	763	634	+129
Alcohol Determination	275	396	-121
Miscellaneous	31	30	+1
Polygraphy	39	0	+39
TOTAL CASES	1,481	1,637	-156
Subpoenas Received	157	196	-39
<u>Cases Received</u>			
Toledo Police Division	1,135	1,095	-40
Regional Agencies	346	542	-196

A
D
M
I
N
I
S
T
R
A
T
I
V
E

S
E
R
V
I
C
E
S

B
U
R
E
A
U

POLICE COMMUNITY RELATIONS SECTION

		1981 Activity	1982 Activity	Numerical Change	Percentage Change
Assignment of Manpower		7	6	- 1	- 14.3%
Invitation to Understanding	Programs	257	19	-238	- 92.6%
	People	18,152	1,692	-16,460	- 90.7%
Special Presentations	Programs	53	36	- 17	- 32.1%
	People	11,506	2,331	- 9,175	- 79.7%
Public Talks	Talks	28	5	- 23	- 82.1%
	People	N/A	142	N/A	N/A
Meetings		161	102	- 59	- 36.6 %
Liaison Contacts		312	174	-138	- 44.2%
School Related Complaints		297	186	-111	- 37.4%
Citizen Complaints		364	331	- 33	- 9.1%
Referrals		152	162	+ 10	+ 6.6%
Surveillances		898	62	-836	- 93.1%
Arrests & Assists		27	75	+ 48	+177.8%

SCHOOL TRAFFIC SAFETY UNIT

	1981	1982	Numerical Change	Percentage Change	
Manpower Allocation	1*	1**	0	0	
Safe - T - City	585	628	+43	+ 7.4%	
Patrol Leadership Camp	84	86	+ 2	+ 2.4%	
Safety Assemblies	People	52,365	23,662	-28,703	-54.8%
	Programs	324	217	- 107	-33.0%
Meetings	32	19	- 13	-40.1%	
Complaints	31	25	- 6	-19.4%	

* School Safety had two assigned until 10-1-81.

** School Safety had two officers assigned for the Safe-T-City program in 1982.

CRIME PREVENTION SECTION

ACTIVITY	1981	1982
Neighborhood Block Watch Presentations	50	13
Persons In Attendance	1,575	800
Neighborhood Block Watch Areas Participating	4	9
Residences Participating	1,530	2,030
Personal Safety Appearances	70	19
Persons In Attendance	3,000	950
Senior Alert Presentations	15	8
Persons In Attendance	800	850
Block Parent Program Presentation	4	0
Elementary Schools Participating	30	33
Community Concerns Meetings Attended	115	69
"Code F" Alarm Program(No. of Alarms)		6,400
Business/Commercial Security Presentations	15	8
Persons In Attendance		150
Media Contacts/Public Service Announcements Produced	5	12

TRAINING AND RECRUITMENT SECTION

TRAINING ACTIVITY	1978	1979	1980	1981	1982
Number of Training Programs Involved	N/A	21	36	42	43
In-Service Training (Man Hours)	21,830	13,149	16,348	19,020	0
Special Training (Man Hours)	2,584	3,954	3,084	11,075	12,884
Roll Call Training (Man Hours)	0	0	335	1,846	1,638
Remedial Training (Man Hours)	N/A	N/A	24	42	1,024
Basic Training (Man Hours)	0	6,400	0	0	35,200
Other Training (Man Hours)	1,467	4,036	68	161	164
TOTAL ANNUAL MAN HOURS	25,881	27,539	19,859	22,144	50,910
Assistance to Other Agencies-Staff Hours	240	2,192	244	2,044	1,188
Average Staffing Level	7	6	4.5	3.75	6
Man Days Lost Time (Illness/Injury)	N/A	77	5	0	0
Ratio Of Staff To Division Personnel	1 : 105	1 : 139	1 : 145	1 : 167	1 : 109

RECRUITMENT ACTIVITY

Background Investigations Completed	50	120
New Candidates Processed	0	2,040
Recruitment Appearances	0	58
Average Staffing Levels	4	6

A
P
P
E
N
D
I
X

	1 9 7 9			1 9 8 0			1 9 8 1			1 9 8 2		
	CALLS FOR SERVICE	CRIMES REPORT-ED	CLEAR-ANCES %	CALLS FOR SERVICE	CRIMES REPORT-ED	CLEAR-ANCES %	CALLS FOR SERVICE	CRIMES REPORT-ED	CLEAR-ANCES %	CALLS FOR SERVICE	CRIMES REPORT-ED	CLEAR-ANCES %
JANUARY	23,991	2,365	32.0	22,813	2,720	45.5	24,520	2,775	22.5	23,417	2,412	26.5
FEBRUARY	20,924	1,921	35.0	21,599	2,162	26.5	23,541	2,619	33.6	22,321	1,955	43.4
MARCH	26,133	2,531	25.9	24,383	2,259	19.9	25,319	2,948	26.2	24,234	2,187	30.5
First Quarter Sub-Totals	71,048	6,817	-	68,795	7,141	-	73,380	8,342	-	69,972	6,554	-
APRIL	24,462	2,496	22.7	24,994	2,660	26.7	25,265	2,781	28.7	23,911	2,283	30.8
MAY	26,464	2,611	21.3	28,073	2,693	19.7	26,231	2,703	21.6	25,711	2,349	28.1
JUNE	27,105	2,698	18.2	30,965	2,995	29.2	28,023	3,036	21.5	25,534	2,617	33.5
Second Quarter Sub-Totals	78,031	7,805	-	84,032	8,348	-	79,519	8,342	-	75,156	7,249	-
First Half of the Year Sub-Totals	149,079	14,622	-	152,827	15,489	-	152,899	16,862	-	145,128	13,803	-
JULY	27,095	3,107	18.6	32,649	3,297	17.2	30,635	3,070	24.7	27,431	2,723	18.6
AUGUST	29,833	3,113	17.8	31,623	3,075	23.8	28,832	3,093	21.0	26,335	2,767	16.7
SEPTEMBER	26,344	2,604	23.6	27,837	2,904	22.0	26,550	2,657	24.2	23,552	2,534	27.6
Third Quarter Sub-Totals	83,272	8,824	-	91,659	9,276	-	86,017	8,820	-	77,318	8,024	-
First Three Quarters Sub-Totals	232,351	23,446	-	244,486	24,765	-	238,916	25,682	-	222,446	21,827	-
OCTOBER	26,784	3,071	22.3	25,698	3,373	19.2	26,370	2,925	29.5	23,666	2,858	35.7
NOVEMBER	24,130	3,040	19.5	24,299	2,910	21.2	24,111	2,927	20.4	22,161	2,812	19.1
DECEMBER	24,669	3,055	21.6	24,642	3,010	16.9	24,175	2,722	49.7	22,475	2,812	20.6
Fourth Quarter Sub-Totals	75,583	9,166	-	73,369	9,293	-	74,656	8,574	-	68,296	8,482	-
GRAND TOTALS FOR YEAR	307,934	32,612	22.6	319,125	34,058	23.9	313,572	34,166	26.9	290,742	30,309	26.2