



# Annual Report

1966

# CITY OF TOLEDO OHIO



FRANK H. BACKSTROM  
CITY MANAGER

DIVISION OF POLICE  
SAFETY BUILDING

ANTHONY A. BOSCH  
CHIEF OF POLICE

ALLEN J. ANDREWS  
SAFETY DIRECTOR

TWX TO-159



TO: Allen J. Andrews, Director of Public Safety

FROM: Anthony A. Bosch, Chief of Police

SUBJECT: 1966 Annual Report of the Division of Police

In compliance with the provisions of Section 107 of the Toledo City Charter, I am respectfully submitting the Annual Report of the Division of Police for the year of 1966.

A brief summary of the statistical contents of this report follows:

	<u>1966</u>	<u>1965</u>	<u>INCREASE +</u> <u>DECREASE -</u>
Units Dispatched to Service Calls	270,233	269,187	+ 0.39%
Class 1 Known Offenses	15,894	15,300	+ 3.9 %
Serious Offenses - (Murder-Non Negligent Manslaughter, Forcible Rape, Robbery, Aggravated Assault, Burglary, Breaking and Entering, Larceny \$50.00 and over, and Auto Theft)	8,288	7,427	+ 11.6 %
Class 1 Known Offenses - Cleared by Arrest	24.9%	25.5%	- 0.23%
Arrests	25,514	22,181	+ 15.2 %
Traffic Accidents	20,154	20,320	- 0.8 %
Traffic Fatalities	64	59	+ 8.47%
Traffic Citations Issued	142,718	130,816	+ 9.09%

To: Allen J. Andrews, Director of Public Safety  
From: Anthony A. Bosch, Chief of Police  
Subject: 1966 Annual Police Report

Portable, Walkie-Talkie Radios for foot patrolmen were first used this year. The innovation has proven so successful, that consideration has been given to expanding their use in the future.

The purchase of approximately one-third replacement of motor vehicles, together with a new type patrol wagon, will greatly reduce maintenance costs. No motor equipment over three years of age will be in service, and only the chassis of the patrol wagons need be replaced frequently, since the body is transferrable to a new chassis as necessary.

Complete new equipment was furnished for the Polygraph Section of the Crime Laboratory.

The State of Ohio, Department of Natural Resources approved our request to subsidize the cost of operating the Police Harbor Patrol. The state now pays one-half the cost of this operation.

The use of tape recording machines in various interrogation activity was greatly expanded, with the purchase of four recorders during the year.

The inservice training program has continued to expand. Written brochures of training information are issued to every member regularly, with visual educational aids supplementing the program at roll call showings. Criminal Investigation instruction was made available to members who desired to attend. Firearms instruction was given with emphasis on new techniques in combat firing, accuracy and speed.

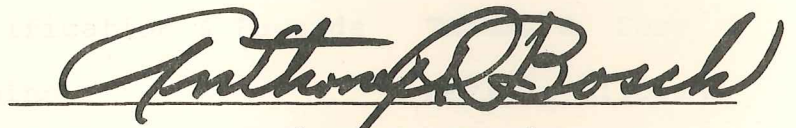
During the year, we were fortunate to graduate a member of the division from the Federal Bureau of Investigation Academy, one member from the Federal Narcotic School, one from a Business Administration School for Police Officials at Harvard University, three from the Municipal Supervisor's Training Program, as well as sending representatives to seminars on Traffic and Computer procedures.

A thorough study has been made of intra-city, inter-state and inter-law enforcement communications. In view of a contemplated National Crime Network, preparations are continuing to assure Toledo the most up-to-date, computerized communications and information retrieval system available.

To: Allen J. Andrews, Director of Public Safety  
From: Anthony A. Bosch, Chief of Police  
Subject: 1966 Annual Police Report

Though the division strength was not increased during 1966, the division had a firm commitment from City Council and the Administration, that fifty new police cadets would be added early in 1967.

I wish to express my personal appreciation to the personnel of the Police Division for the outstanding loyalty and the efficiency displayed in the performance of duty. Also, my deep appreciation to the Administration and City Council for their cooperation in the past which has made it possible to implement many successful programs.

A handwritten signature in black ink, reading "Anthony A. Bosch". The signature is written in a cursive style and is positioned above a horizontal line.

Anthony A. Bosch,  
Chief of Police.

AAB:hh

ADMINISTRATIVE STAFF AND UNIT COMMAND

ANTHONY A. BOSCH

CHIEF OF POLICE

Assistant Chief of Police		Edward E. Meeker
Major	- Bureau of Identification & Reocrds	William G. Wiener
Major	- Detective Bureau	Edward J. Nasser
Major	- Uniform Branch	Robert J. Duck
Superintendent	- Traffic Bureau	Howard M. Tripp
Superintendent	- Communications & Personnel	Thurman L. Leighton
Captain	- Detective Bureau Shift	Owen S. Green
Captain	- Uniform Shift	Nelson O. Moss
Captain	- Bureau of Identification & Records	Thomas H. Case
Captain	- Academy & Training	Merl A. Gladieux
Captain	- Detective, Crimes Against Property	Marion A. Davey
Captain	- Crime Prevention Bureau	Erwin P. Oehlers
Captain	- Detective, Crimes Against Person	Roy C. Shelton
Captain	- Detective Bureau Shift	William J. Gray
Captain	- Uniform Shift	Michael D. Liwo
Captain	- Uniform Shift	Anthony Holewinski
Captain	- Detective Bureau Shift	Thomas C. O'Leary
Captain	- Crime Detection Laboratory	Ted B. Kwiatkowski
Captain	- Uniform Shift	Robert E. Gray

Listed by Title Classification and Total Departmental Seniority

P R O M O T I O N

1 9 6 6

March 18, 1966. . . . . Elwood E. Dernlan. . . . . Lieutenant  
March 18, 1966. . . . . Regis F. Boyle . . . . . Sergeant  
April 29, 1966. . . . . William Burnside . . . . . Sergeant  
July 1, 1966. . . . . Raymond Krupski. . . . . Lieutenant  
July 1, 1966. . . . . Harold D. Patterson. . . . . Sergeant  
July 2, 1966. . . . . Philip J. Moore. . . . . Sergeant  
August 19, 1966 . . . . . Robert A. Burgard. . . . . Sergeant  
September 23, 1966. . . . . Elwood R. Yeack. . . . . Sergeant  
September 23, 1966. . . . . Roman F. Gardocki. . . . . Sergeant  
October 19, 1966. . . . . Kenneth C. Rebensal. . .Provisional Captain  
October 21, 1966. . . . . Charles E. Wiener. . . . . Lieutenant  
October 21, 1966. . . . . Raymond M. Keesecker . . . . . Sergeant  
October 21, 1966. . . . . Walter F. Goetting . . . . . Sergeant

## R E T I R E M E N T S

1 9 6 6

March 7, 1966 . . . . . Lynn G. Waters . . . . . Lieutenant  
 April 30, 1966 . . . . . Howard E. Wenland . . . . . Patrolman  
 June 14, 1966 . . . . . William E. Fisk . . . . . Lieutenant  
 July 22, 1966 . . . . . Robert J. Lautz . . . . . Sergeant  
 August 1, 1966 . . . . . Steve Krushe . . . . . Patrolman  
 October 1, 1966 . . . . . Chester R. Pacer . . . . . Sergeant  
 October 18, 1966 . . . . . Norton H. Cassady . . . . . Captain  
 October 18, 1966 . . . . . Ollie A. Szmania . . . . . Patrolman  
 December 1, 1966 . . . . . Thomas J. Keeler . . . . . Patrolman  
 December 5, 1966 . . . . . Leland S. Stipes . . . . . Sergeant

## R E S I G N A T I O N S

1 9 6 6

January 10, 1966 . . . . . James T. Weiss . . . . . Patrolman  
 February 7, 1966 . . . . . Thomas Kline . . . . . Patrolman  
 February 25, 1966 . . . . . Dale Spratt . . . . . Patrolman  
 February 25, 1966 . . . . . John Abrams . . . . . Patrolman  
 March 18, 1966 . . . . . Earl Bainbridge . . . . . Patrolman  
 March 18, 1966 . . . . . John P. Meehan . . . . . Patrolman  
 March 30, 1966 . . . . . Harold W. Miller . . . . . Patrolman  
 April 5, 1966 . . . . . James C. Gorsuch . . . . . Patrolman  
 June 6, 1966 . . . . . Earl A. Fowler . . . . . Patrolman  
 July 2, 1966 . . . . . William P. Stoner . . . . . Sergeant  
 August 1, 1966 . . . . . Robert A. Boehme . . . . . Patrolman  
 August 1, 1966 . . . . . John H. Bryan . . . . . Patrolman  
 August 5, 1966 . . . . . Joseph P. Tansey . . . . . Patrolman  
 August 31, 1966 . . . . . Myron C. Conger . . . . . Patrolman  
 August 31, 1966 . . . . . Charles E. McCawley . . . . . Patrolman  
 September 1, 1966 . . . . . Donald K. Ganzel . . . . . Patrolman  
 September 8, 1966 . . . . . Norman E. Weinstein . . . . . Patrolman  
 September 10, 1966 . . . . . Ronald H. Schmidt . . . . . Sergeant  
 September 23, 1966 . . . . . Dale W. Meyers . . . . . Sergeant  
 October 10, 1966 . . . . . Charles H. Lagger . . . . . Patrolman  
 October 29, 1966 . . . . . Robert D. Baumgartner . . . . . Patrolman

D E C E A S E D  
1 9 6 6

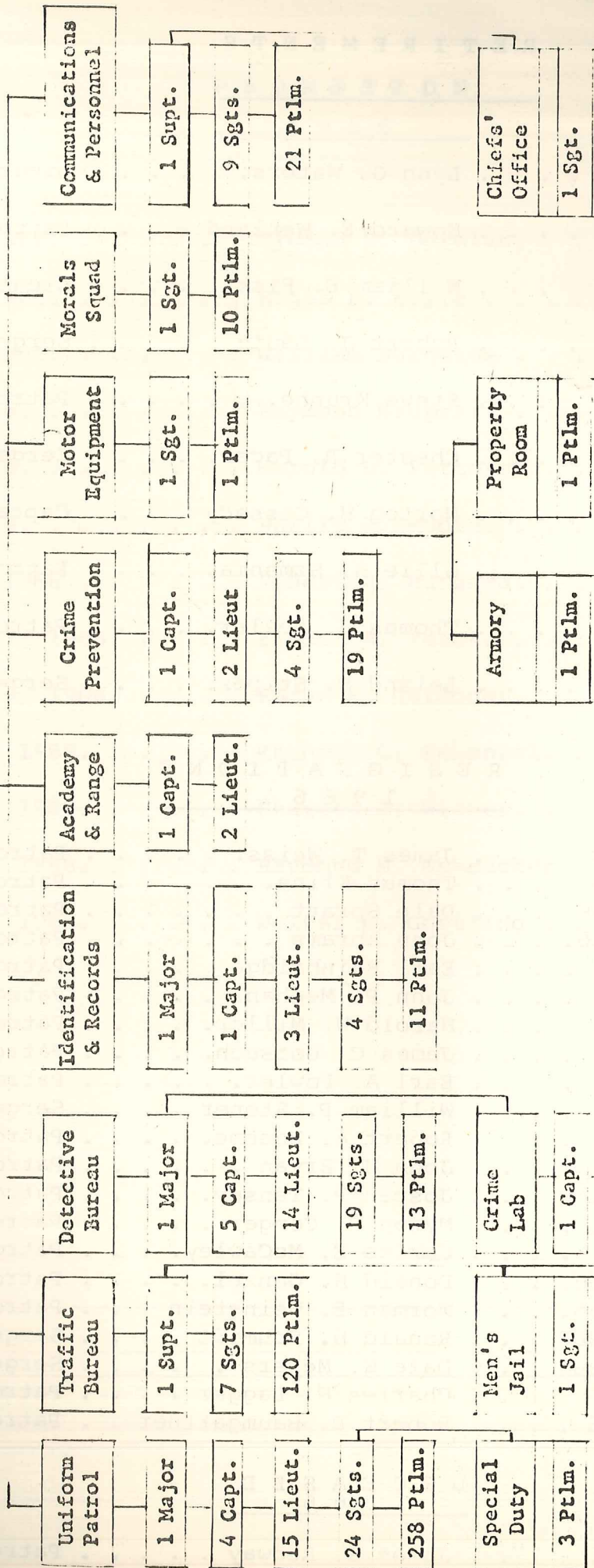
May 2, 1966 . . . . . James S. Redway . . . . . Patrolman

ORGANIZATION CHART  
DIVISION OF POLICE

POLICE  
PERSONNEL

1966

Chief of Police  
Assistant Chief



Total Authorized Strength as of December 31, 1965

- 1 Chief
- 1 Assistant Chief
- 3 Majors
- 2 Superintendents
- 13 Captains
- 37 Lieutenants
- 71 Sergeants
- 475 Patrolmen ( Vacant 23 )

603 TOTAL ALLOWED



DIVISION OF POLICE

PERSONNEL, SALARY RANGE AND DISTRIBUTION .....

Chief 1125-1262  
 Assistant Chief 930-1042  
 Major 930-1042  
 Superintendent 799- 895  
 Captain 799- 895  
 Lieutenant 687- 769  
 Sergeant 614- 687  
 Patrolman 509- 591

TOTAL POLICE PERSONNEL

Secretary I 439-491  
 Clerk III 439-491  
 Auto Eq. Svcm I 423-472  
 Senior Tab Opr. 423-472  
 Tailor 408-455  
 Clerk II 394-439  
 Stenographer I 379-423  
 Senior Key Punch Opr. 379-423  
 Matron 379-423  
 Junior Key Punch Opr. 365-408  
 Clerk I 365-408

TOTAL CIVILIAN PERSONNEL

ASSIGNED

7x3 Relief					78	78															
3x11 Relief					79	79															
11x7 Relief					76	76															
Detectives		1		5	14	19	13	52													
Crime Lab				1	1	1		3													
Morals Squad						1	10	11													
Communications			1			9	21	31													
Crime Prevention				1	2	4	19	26					1		8					9	
Identification & Records			1	1	3	4	11	20		1		1	2	1	2				5	12	
Court & Jail						1	17	18													
Administration	1	1				1		3		1				1						2	
Uniform Command			1		4	15	24	44													
Special							3	3													
Garage						1	1	2				7								7	
Armory							1	1				1								1	
Property Room							1	1													
Academy & Range					1	2		3													
Mayors Office							1	1													
Traffic Bureau				1		7	120	128						1				1	6	8	
Tailor Shop														1						1	
VACANT							23	23												0	
TOTALS	1	1	3	2	13	37	71	475	603	1	1	8	1	1	3	3	2	8	1	11	40

SERVICE AND AGE, BY RANK

AVERAGES

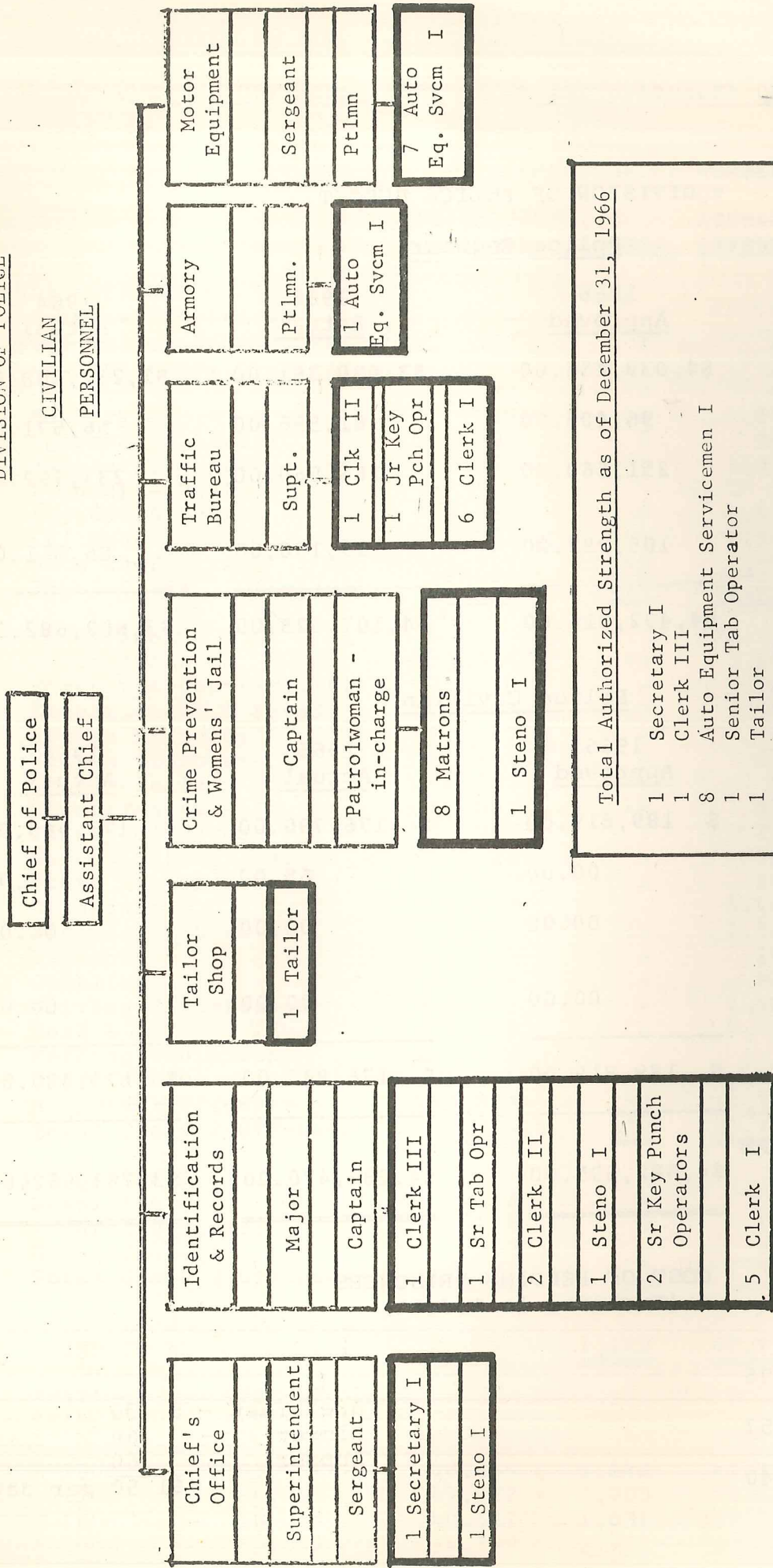
YEARS OF SERVICE	from	0	4	7	10	13	16	19	22	25	28	31	34	37	40+
	to	3	6	9	12	15	18	21	24	27	30	33	36	39	
YEARS OF AGE	from	21	24	27	30	33	36	39	42	45	48	51	54	57	60+
	to	23	26	29	32	35	38	41	44	47	50	53	56	59	

CHIEF (1)	Service	1														36	
	Age																60
ASST. CHIEF (1)	Service																40
	Age																60
MAJOR (3)	Service									1	2						27.0
	Age										1	2					53.1
SUPT. (2)	Service									1							32
	Age											1					56.1
CAPTAIN (13)	Service									7	2	1		3			25.1
	Age										5	1	2	2	3		55.1
LIEUTENANT (37)	Service				1		7	6	11	9	2		1				23.2
	Age						1	3	4	3	10	8	6	1			51.2
SERGEANT (71)	Service			2	13	12	16	2	16	7	1	2		1	1		18.3
	Age					9	14	12	6	7	9	7	4	1	2		40.2
PATROLMAN (452)	Service	199	108	65	38	35	32	3	10	2		2	1	4	2		8.2
	Age	102	44	46	58	75	61	29	29	13	8	5	7	4	7		29.8
TOTAL SERVICE (580)		199	108	65	52	47	55	11	37	27	9	5	3	9	4		12.6
TOTAL AGES		102	44	46	58	84	76	44	33	23	33	22	19	8	16		31.8

AS OF DECEMBER 31, 1966

ORGANIZATIONAL CHART  
DIVISION OF POLICE

CIVILIAN  
PERSONNEL



Total Authorized Strength as of December 31, 1966

1	Secretary I
1	Clerk III
8	Auto Equipment Servicemen I
1	Senior Tab Operator
1	Tailor
3	Clerk II
8	Matrons
3	Stenographer I
2	Senior Key Punch Operators
1	Junior Key Punch Operators
11	Clerk I
40	TOTAL ALLOWED

NOTE: All Civilian classifications indicated in heavy-bordered boxes. Police personnel shown only to indicate supervision of civilians.

## DIVISION OF POLICE BUDGET

Police Regular

	<u>1966</u> <u>Approved</u>	<u>1965</u> <u>Actual</u>	<u>1964</u> <u>Actual</u>
Personal Service	\$4,039,454.00	\$3,630,361.00	\$3,232,508.00
Supplies	96,405.00	81,596.00	56,571.00
Contractual	251,660.00	266,560.00	233,792.00
Maintenance & Capital Outlay	105,297.00	129,108.00	86,811.00
<b>TOTAL</b>	<b>\$4,492,816.00</b>	<b>\$4,107,625.00</b>	<b>\$3,609,682.00</b>

Police Civilian

	<u>1966</u> <u>Approved</u>	<u>1965</u> <u>Actual</u>	<u>1964</u> <u>Actual</u>
Personal Service	\$ 189,819.00	\$ 176,780.00	\$ 172,965.00
Supplies	00.00	65.00	415.00
Contractual	00.00	00.00	00.00
Maintenance & Capital Outlay	00.00	00.00	00.00
<b>TOTAL</b>	<b>\$ 189,819.00</b>	<b>\$ 176,845.00</b>	<b>\$ 173,380.00</b>
<b>REGULAR AND CIVILIAN GRAND TOTAL</b>	<b>\$4,682,635.00</b>	<b>\$4,284,470.00</b>	<b>\$3,783,062.00</b>

COST OF FEEDING PRISONERS  
(Included in Budget)

1966	\$12,250.75	
1965	8,645.57	Breakfast - \$ .30
1964	7,298.40	Dinner - .60
		Supper .60
		<u>\$1.50</u> per day

KNOWN OFFENSES, CLEARANCES AND UNFOUNDED CASES

	OFFENSES REPORTED OR KNOWN	UNFOUNDED i.e. FALSE BASELESS	NUMBER OF ACTUAL OFFENSES	1966 OFFENSES CLEARED	PREVIOUS YEARS OFFENSES CLEARED	
<b>CLASS 1 OFFENSES</b>						
1. Criminal Homicide	-	-	-	-	-	
(a) Murder-Nonneg. Mnslgtr.	27	1	26	24	-	
(b) Mnslgtr. by Negligence	66	37	29	29	-	
2. Rape	77	12	65	49	3	
3. Robbery	710	50	660	198	7	
4. Aggravated Assault	397	6	391	348	7	
5. Burglary, Breaking, etc.	3,613	239	3,374	613	117	
6. Larceny - Theft						
(a) \$50 & Over	2,555	138	2,417	325	23	
(b) Under \$50	7,763	183	7,580	1,740	48	
7. Auto Theft	1,507	149	1,358	391	50	
Total Class 1 Offenses	<u>16,715</u>	<u>815</u>	<u>15,900</u>	<u>3,717</u>	<u>255</u>	
<b>CLASS 2 OFFENSES</b>						
8. Other Assaults	3,536	91	3,445	2,799	53	
9. Forgery & Counterfeiting	110	-	110	63	7	
10. Embezzlement & Fraud	573	22	551	304	42	
11. Stolen Property	47	-	47	46	-	
12. Weapon Offenses	216	-	216	200	2	
13. Commercialized Vice	97	-	97	97	-	
14. Sex Offenses	597	44	553	347	18	
15. Family Offenses	298	1	297	245	22	
16. Narcotic Drug Laws	22	-	22	18	-	
17. State Liquor Laws	194	-	194	194	-	
18. Drunkenness	5,068	-	5,068	5,068	-	
19. Disorderly Conduct	1,876	12	1,864	1,660	36	
20. Vagrancy	185	-	185	185	-	
21. Gambling	289	-	289	289	-	
22. Driving Intoxicated	1,421	-	1,421	1,421	1	
23. Road & Driving Laws	4,488	-	4,488	4,488	12	
24. Parking Violations	1	-	1	1	-	
25. Traffic Laws	1,148	-	1,148	1,148	5	
26. All Other Offenses	10,873	152	10,721	4,521	75	
Total Class 2 Offenses	<u>31,039</u>	<u>322</u>	<u>30,717</u>	<u>23,094</u>	<u>273</u>	
<b>CLASS 3 OFFENSES</b>						
27. Suspicion	-	-	-	-	-	
28. Federal Offenses	128	5	123	60	-	
29. Non-Offense Arrests	973	-	973	973	3	
Total Class 3 Offenses	<u>1,101</u>	<u>5</u>	<u>1,096</u>	<u>1,033</u>	<u>3</u>	
<b>GRAND TOTAL</b>	<u>48,855</u>	<u>1,142</u>	<u>47,713</u>	<u>27,844</u>	<u>531</u>	
<b>PREVIOUS YEARS</b>	<b>PERCENT CLEARED</b>					
1966	58.35%	48,855	1,142	47,713	27,844	531
1965	56.23%	44,522	1,003	43,519	24,473	510
1964	56.61%	40,567	1,031	39,536	22,385	422
1963	59.04%	34,399	907	33,492	19,776	333
1962	60.15%	29,942	860	29,801	17,926	309

KNOWN OFFENSES TOTALS, PERCENTAGE CLEARED BY ARREST  
RATE PER 100,000 POPULATION

	<u>1966</u>	<u>1965</u>	<u>1964</u>	<u>1963</u>	<u>1962</u>
<b>MURDER</b>					
Known Offenses	26	20	9	11	15
Pct. Cleared by Arrest	92.3	100.0	77.8	100.0	93.3
Rate Per 100M	6.5	5.0	2.4	3.1	4.4
<b>NEGLIGENT MANSLAUGHTER</b>					
Known Offenses	29	22	15	11	14
Pct. Cleared by Arrest	100.0	95.5	80.0	90.9	100.0
Rate Per 100M	7.3	5.6	4.1	3.1	4.1
<b>FORCIBLE RAPE</b>					
Known Offenses	65	45	53	34	35
Pct. Cleared by Arrest	80.0	84.4	75.8	100.0	71.4
Rate Per 100M	16.4	11.4	14.3	9.6	10.3
<b>ROBBERY</b>					
Known Offenses	660	487	405	339	348
Pct. Cleared by Arrest	31.1	37.6	45.0	47.8	27.9
Rate Per 100M	167.5	124.0	110.8	96.0	102.9
<b>AGGRAVATED ASSAULT</b>					
Known Offenses	391	307	310	230	218
Pct. Cleared by Arrest	90.3	93.2	93.5	92.2	99.1
Rate Per 100M	99.2	78.2	84.8	65.2	64.8
<b>BURGLARY</b>					
Known Offenses	3,374	3,096	2,543	2,041	1,726
Pct. Cleared by Arrest	21.5	23.9	31.2	26.2	30.3
Rate Per 100M	856.3	788.7	695.8	578.3	510.8
<b>LARCENY-\$50 &amp; OVER</b>					
Known Offenses	2,417	2,311	2,021	1,841	1,748
Pct. Cleared by Arrest	14.1	13.0	14.4	14.2	16.4
Rate Per 100M	613.4	588.7	552.7	521.6	517.3
<b>LARCENY UNDER \$50 VALUE</b>					
Known Offenses	7,580	7,851	8,159	6,814	5,366
Pct. Cleared by Arrest	23.5	23.2	20.4	26.2	26.3
Rate Per 100M	1923.8	2000.0	2231.4	1930.6	1588.1
<b>AUTO THEFT</b>					
Known Offenses	1,358	1,161	884	682	474
Pct. Cleared by Arrest	32.5	41.6	40.5	47.4	54.9
Rate Per 100M	344.6	295.7	241.8	193.2	140.2
<b>TOTAL</b>					
Known Offenses	15,900	15,300	14,399	12,003	9,945
Pct. Cleared by Arrest	24.9	25.5	25.3	27.8	28.6
Rate Per 100M	4035.5	3898.0	3937.9	3400.8	2943.4
<b>TOTAL</b>					
Serious Offenses	8,291	7,427	6,225	5,178	4,565
Pct. Cleared by Arrest	25.8	20.5	31.5	29.7	31.2
Rate Per 100M	2104.3	1892.2	1684.0	1467.1	1351.1

Serious Offenses is a term used to measure crime. It includes seven offenses; Murder and Non-Negligent Manslaughter, Forcible Rape, Robbery, Aggravated Assault, Burglary-Breaking and Entering, Larceny \$50 and Over and Auto Theft.

The population estimate used as a basis for the crime rate follows:  
 1962 estimated population-337,869; 1963 estimated population-352,951;  
 1964 estimated population-369,650; 1965 estimated population-392,500;  
 1966 estimated population-394,000.

CRIME INDEX TREND

The following Class 1 Known Offenses are set out to show what offenses have changed in volume, the percent of that change and the percent of cases cleared by arrest compared with the previous year.

	<u>1966</u>	<u>1965</u>	Increase + Decrease -	<u>Cleared by Arrest</u>	
				<u>1966</u>	<u>1965</u>
1. Murder-Non Negligent Manslaughter	26	20	+30.0%	92.3%	100.0%
2. Negligent Manslaughter	29	22	+31.8%	100.0%	95.5%
3. Forcible Rape	65	45	+44.4%	80.0%	84.4%
4. Robbery	660	487	+35.5%	31.1%	37.6%
5. Aggravated Assault	391	307	+27.4%	90.3%	93.2%
6. Burglary-Breaking and Entering	3,370	3,096	+12.1%	21.5%	23.9%
7. Larceny-\$50 & over	2,417	2,311	+ 4.5%	14.1%	13.0%
8. Larceny-Under \$50	7,577	7,851	- 4.5%	23.5%	23.2%
9. Auto Theft	<u>1,359</u>	<u>1,161</u>	<u>+17.0%</u>	<u>32.5%</u>	<u>41.6%</u>
TOTAL (Class 1)	<u>15,894</u>	<u>15,300</u>	<u>+ 3.9%</u>	<u>24.9%</u>	<u>25.5%</u>

CRIME INDEX TREND

Percent of change in the Serious Crimes for 1965 and 1966.

TOLEDO

National Trend for  
Cities of 250,000  
to 500,000 population

			1966	1965
1. Murder-Non Negligent Manslaughter	+30.0%	+122.0%	+10.0%	+ 5.0%
2. Forcible Rape	+44.4%	- 15.1%	+18.0%	+ 8.0%
3. Robbery	+35.5%	+ 20.2%	+14.0%	+ 1.0%
4. Aggravated Assault	+27.4%	- 1.0%	+ 6.0%	+ 1.0%
5. Burglary, Breaking & Entering, etc.	+12.1%	+ 21.7%	+12.0%	+ 4.0%
6. Larceny, Theft (\$50 & over) Except Autos	+ 4.5%	+ 14.3%	+13.0%	+ 3.0%
7. Auto Theft	<u>+17.0%</u>	<u>+ 31.3%</u>	<u>+13.0%</u>	<u>+ 4.0%</u>
TOTAL SERIOUS CRIME	<u>+11.6%</u>	<u>+ 19.3%</u>	<u>+12.0%</u>	<u>+ 3.0%</u>

Increase +  
Decrease -



cc-15

KNOWN OFFENSES BY MONTH OF OCCURRENCE

	JAN.	FEB.	MARCH	APRIL	MAY	JUNE	JULY	AUG.	SEPT.	OCT.	NOV.	DEC.	TOTAL
<b>CLASS 1 OFFENSES</b>													
1. CRIMINAL HOMICIDE													
2. A. MURDER-NONNEG. MNSLGHTR.													
3. B. MNSLGHTR. BY NEGLIGENCE													
2. RAPE													
3. ROBBERY													
4. AGGRAVATED ASSAULT													
5. BURGLARY, BREAKING, ETC.													
6. LARCENY - THEFT													
22 A. \$50 & OVER													
22 B. UNDER \$50													
7. AUTO THEFT													
TOTAL CLASS 1 OFFENSES	1130	1096	1143	1237	1338	1305	1406	1505	1332	1658	1377	1373	15900
<b>CLASS 2 OFFENSES</b>													
8. OTHER ASSAULTS													
9. FORGERY & COUNTERFEITING													
10. EMBEZZLEMENT & FRAUD													
11. STOLEN PROPERTY													
12. WEAPON OFFENSES													
13. COMMERCIALIZED VICE													
14. SEX OFFENSES													
15. FAMILY OFFENSES													
16. NARCOTIC DRUG LAW													
17. STATE LIQUOR LAW													
18. DRUNKENNESS													
19. DISORDERLY CONDUCT													
20. VAGRANCY													
21. GAMBLING													
22. DRIVING INTOXICATED													
23. ROAD & DRIVING LAWS													
24. PARKING VIOLATIONS													
25. TRAFFIC LAWS													
26. ALL OTHER OFFENSES													
TOTAL CLASS 2 OFFENSES	2049	1889	2374	2506	2645	2918	2886	2954	2744	2975	2452	2325	30717
<b>CLASS 3 OFFENSES</b>													
27. SUSPICION													
28. FEDERAL OFFENSES													
29. NON-FEDERAL OFFENSES													
TOTAL CLASS 3 OFFENSES	3256	3076	3636	3832	4085	4292	4401	4579	4172	4712	3906	3766	47713
GRAND TOTAL													13.

X punch y

8 9 0

*done* 14.

KNOWN OFFENSES BY MONTH

JAN. FEB. MARCH APRIL MAY JUNE JULY AUG. SEPT. OCT. NOV. DEC. TOTAL

RAPE	3	3	2	3	4	5	5	6	2	2	4	39
FORCE	1	1	3	1	-	4	2	2	2	2	3	26
ASSAULT TO ATTEMPTS	4	4	5	4	4	9	7	8	4	7	7	65
TOTAL	8	8	10	8	13	18	14	16	8	13	18	130
ROBBERY	23	19	27	40	24	15	24	35	44	53	40	394
HIGHWAY, STREET, ETC.	6	2	3	1	5	9	7	7	11	9	8	82
COMMERCIAL HOUSE	4	4	2	2	2	1	6	8	6	3	5	50
GAS STATION	-	-	-	-	-	-	1	-	-	2	1	6
CHAIN STORE	5	3	3	1	6	2	3	7	4	11	5	53
RESIDENCE	-	-	-	-	-	-	1	1	-	-	-	3
BANK	6	2	6	4	5	6	7	6	7	11	11	72
MISCELLANEOUS	44	30	41	48	42	33	49	64	72	84	70	660
TOTAL	110	113	122	122	118	97	87	94	93	163	150	1358

BURGLARY	52	55	61	63	43	54	57	68	90	52	60	728
RESIDENCE - DWELLING-	31	35	33	24	36	43	55	49	43	39	38	463
1. NIGHT	17	4	15	11	13	6	10	16	10	8	13	131
2. DAY	-	-	-	-	-	-	-	-	-	-	-	-
3. UNKNOWN	-	-	-	-	-	-	-	-	-	-	-	-
NONRESIDENCE	174	161	139	119	119	121	136	158	145	196	167	1838
1. NIGHT	6	7	11	12	13	4	3	8	8	23	8	107
2. DAY	4	9	9	11	15	8	6	17	5	5	9	107
3. UNKNOWN	284	271	268	240	239	236	267	316	301	323	295	3374
TOTAL	153	183	165	204	243	189	217	226	206	260	206	2417

LARCENY - VALUE	403	357	445	464	556	591	624	640	498	629	497	6148
OVER \$50	106	112	114	104	100	107	122	118	118	133	115	1432
\$5 TO \$50	662	652	724	772	899	887	963	984	822	1022	818	9997
UNDER \$5	15	12	8	17	8	12	13	11	15	17	12	154
TOTAL	3	5	6	8	5	5	4	7	5	10	6	78

LARCENY - NATURE	15	12	8	17	8	12	13	11	15	17	12	154
POCKET PICKING	3	5	6	8	5	5	4	7	5	10	6	78
PURSE SNATCHING	81	79	93	74	74	65	68	78	97	117	131	1089
SHOPLIFTING	131	177	181	157	175	165	162	169	159	202	169	1987
THEFTS FROM AUTOS	140	139	171	188	186	138	146	181	172	203	183	1946
THEFTS - ACCESSORIES-	30	35	46	88	166	224	219	198	138	171	58	1388
BICYCLES	171	165	157	150	165	138	197	160	125	205	190	2024
FROM BUILDINGS	5	1	7	1	2	4	8	9	4	12	2	61
FROM COIN-OPR. MACH.	86	39	55	89	118	136	146	171	107	85	67	1270
ALL OTHER	662	652	724	772	899	887	963	984	822	1022	818	9997
TOTAL	110	113	77	122	118	97	87	94	93	163	150	1358

*Unminded + Adults*

*18+19 20+21 22+23*

KNOWN OFFENSES - BY TIME OF DAY

*omit*  
*8+9 10-11 12-13 14+15 16+17*

*2+3 4+5 6+7*

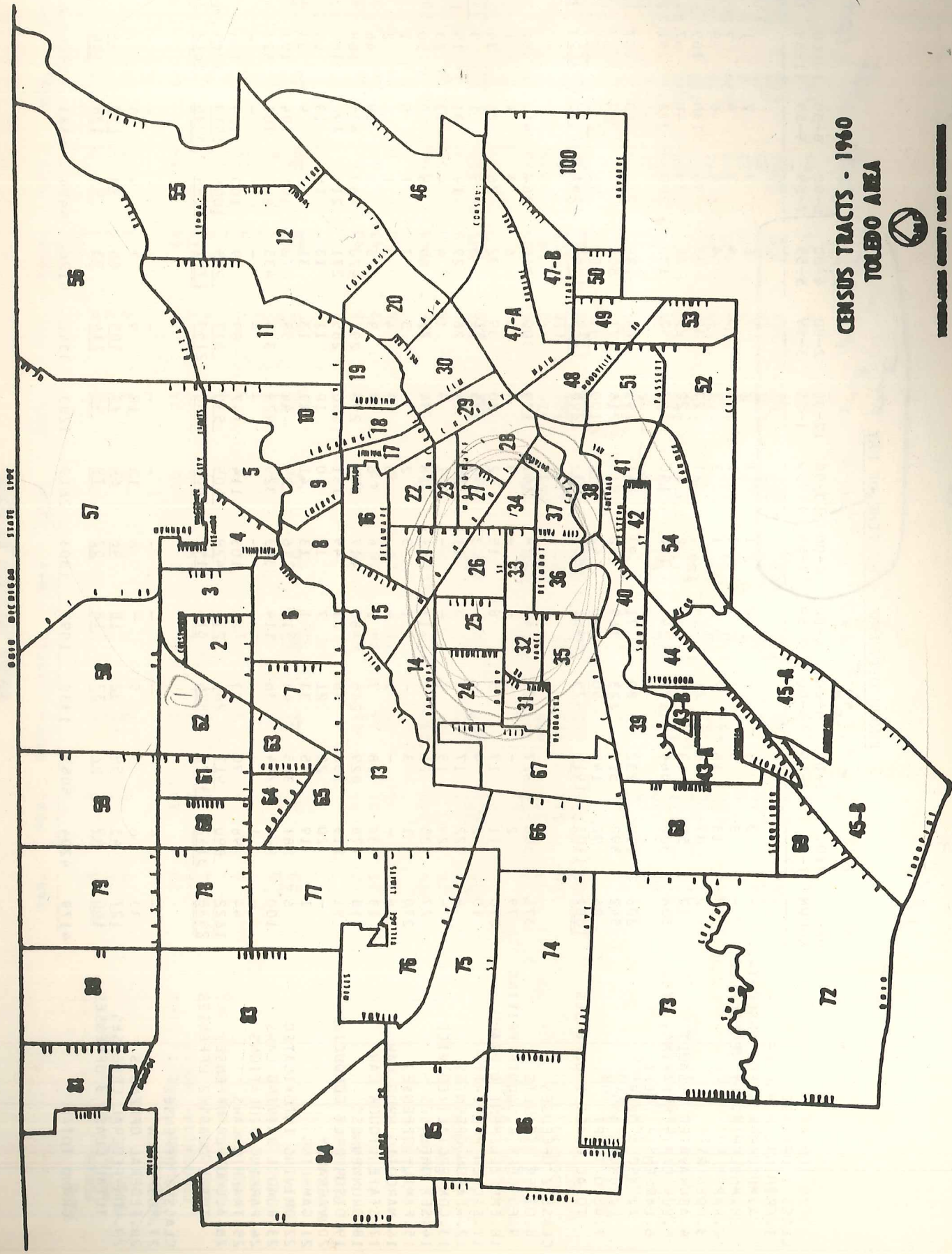
*00 01 2+3 4+5 6+7*

*00-12-13*

CLASS 1 OFFENSES	UN-KNOWN		MID.		A.M.		P.M.		TOTAL	
	1-59	2-59	1-59	2-59	3-59	4-59	5-59	6-59	7-59	8-59
1. CRIMINAL HOMICIDE	3	3	1	1	2	2	6	3	2	1
A. MURDER-NONNEG.	3	3	1	1	1	1	4	2	4	5
B. MNSLGHTR. BY NEGLIGENCE	-	-	1	1	1	1	4	2	4	8
2. RAPE	13	16	1	3	4	4	4	4	6	8
3. ROBBERY	87	76	5	21	39	33	33	96	130	109
4. AGGRAVATED ASSAULT	55	63	6	11	22	23	24	34	48	67
5. BURGLARY, BREAKING, ETC.	236	864	150	150	147	152	132	200	333	361
6. LARCENY - THEFT	203	232	93	141	193	184	186	225	340	337
A. \$50 & OVER	542	517	260	519	715	771	808	879	1087	798
B. UNDER \$50	86	145	42	92	100	91	85	98	259	168
7. AUTO THEFT	1103	1919	559	939	1208	1269	1282	1541	2209	1854
TOTAL CLASS 1 OFFENSES	1081	327	77	141	179	300	345	364	412	451

CLASS 2 OFFENSES	UN-KNOWN		MID.		A.M.		P.M.		TOTAL	
	1-59	2-59	1-59	2-59	3-59	4-59	5-59	6-59	7-59	8-59
8. OTHER ASSAULTS	371	327	77	141	179	300	345	364	412	451
9. FORGERY & COUNTERFEITING	79	2	-	3	4	8	6	3	4	1
10. EMBEZZLEMENT & FRAUD	276	17	5	32	30	39	32	26	26	34
11. STOLEN PROPERTY	10	4	-	1	5	4	5	9	1	3
12. WEAPON OFFENSES	4	17	5	20	14	26	29	19	31	15
13. COMMERCIALIZED VICE	-	15	7	1	-	1	4	4	13	23
14. SEX OFFENSES	27	21	6	28	54	72	89	68	59	50
15. FAMILY OFFENSES	270	3	-	2	3	3	7	1	5	1
16. NARCOTIC DRUG LAW	6	-	1	3	2	4	3	1	-	2
17. STATE LIQUOR LAW	13	18	7	6	7	3	5	6	39	46
18. DRUNKENNESS	18	829	245	205	296	291	420	480	635	668
19. DISORDERLY CONDUCT	91	138	48	131	150	285	271	216	190	160
20. VAGRANCY	-	22	21	10	10	11	13	16	19	18
21. GAMBLING	1	45	33	41	29	13	31	22	9	33
22. DRIVING INTOXICATED	6	365	48	29	44	59	72	101	194	193
23. ROAD & DRIVING LAWS	100	244	36	329	479	374	435	402	701	523
24. PARKING VIOLATIONS	-	90	23	114	147	89	-	-	-	-
25. TRAFFIC LAWS	44	90	23	114	147	89	79	100	129	106
26. ALL OTHER OFFENSES	1622	917	264	505	530	571	905	1006	1519	1285
TOTAL CLASS 2 OFFENSES	2938	3072	826	1601	1980	2159	2751	2844	3986	3612

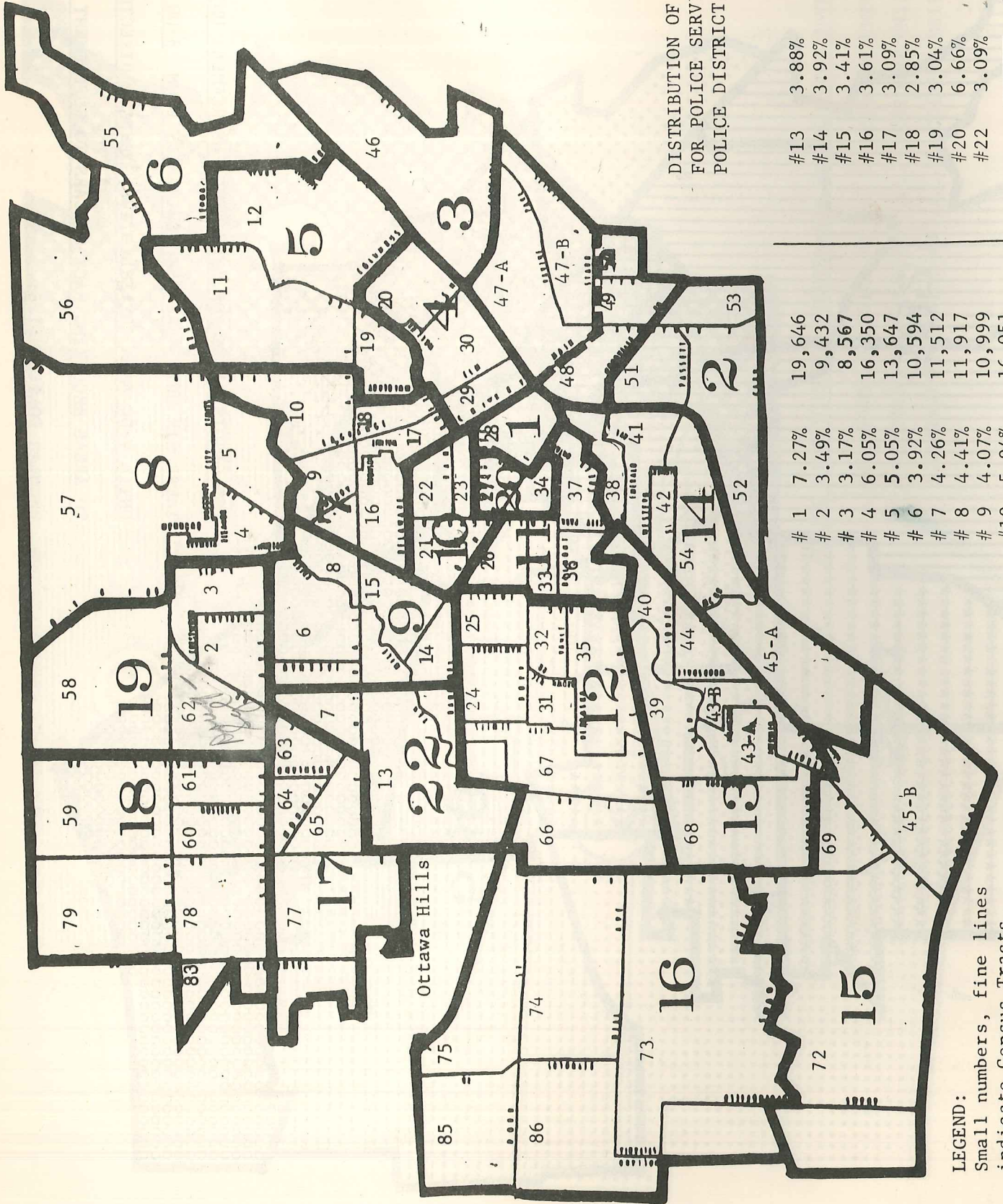
CLASS 3 OFFENSES	UN-KNOWN		MID.		A.M.		P.M.		TOTAL	
	1-59	2-59	1-59	2-59	3-59	4-59	5-59	6-59	7-59	8-59
27. SUSPICION	-	-	-	-	-	-	-	-	-	-
28. FEDERAL OFFENSES	33	3	5	15	18	9	7	9	5	7
29. NON-FEDERAL OFFENSES	127	59	32	64	77	105	86	90	133	93
TOTAL CLASS 3 OFFENSES	160	62	37	79	95	114	93	99	138	100
GRAND TOTAL	4179	4294	1338	2619	3283	3542	4126	4484	6333	5566



CENSUS TRACTS - 1960  
TOLEDO AREA



U.S. DEPARTMENT OF COMMERCE  
BUREAU OF ECONOMIC ANALYSIS

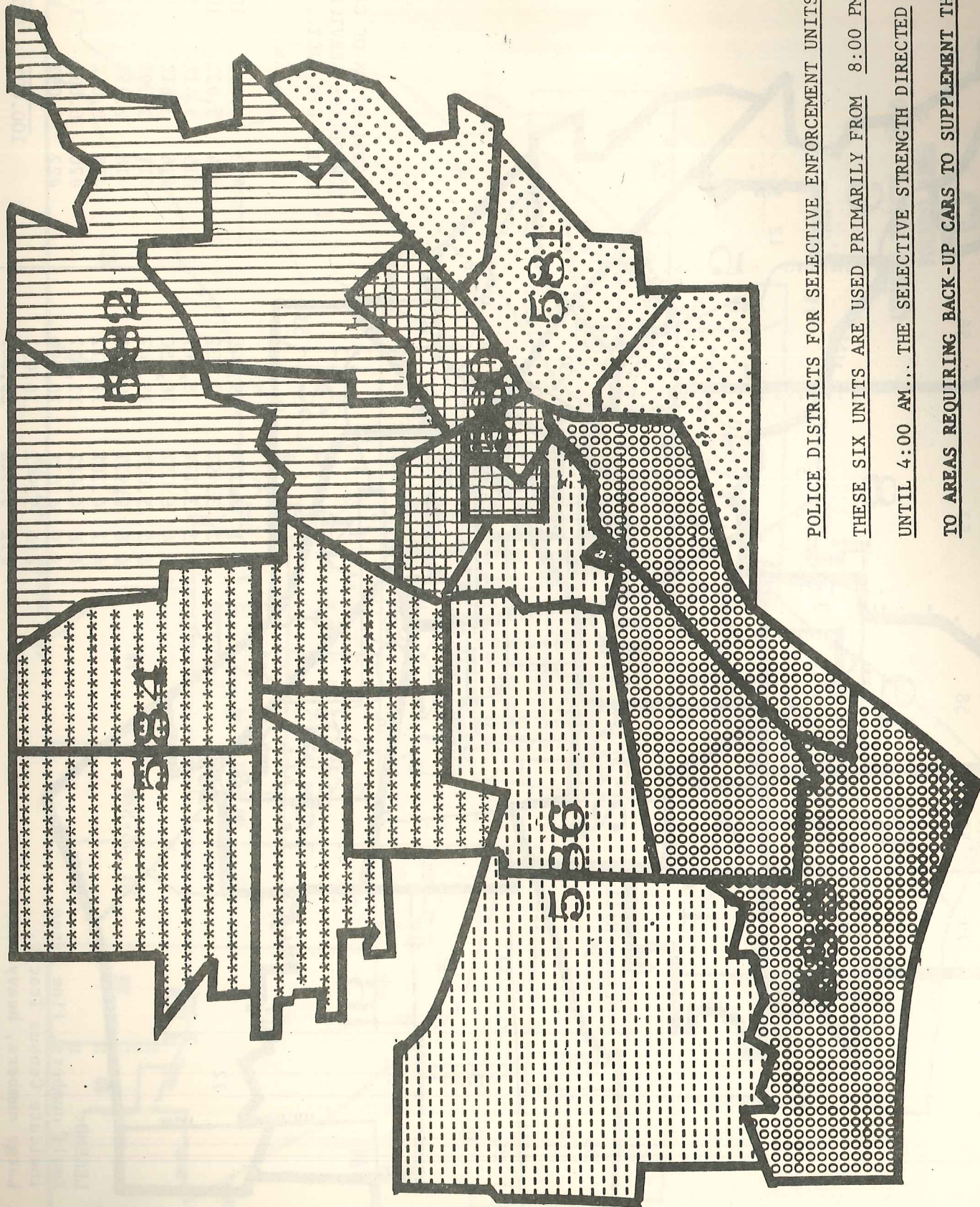


DISTRIBUTION OF CALLS  
FOR POLICE SERVICE, BY  
POLICE DISTRICT.....

#13	3.88%	10,485
#14	3.92%	10,593
#15	3.41%	9,214
#16	3.61%	9,755
#17	3.09%	8,350
#18	2.85%	7,701
#19	3.04%	8,215
#20	6.66%	17,997
#22	3.09%	8,350
	<u>100.00%</u>	<u>270,233</u>

#1	7.27%	19,646
#2	3.49%	9,432
#3	3.17%	8,567
#4	6.05%	16,350
#5	5.05%	13,647
#6	3.92%	10,594
#7	4.26%	11,512
#8	4.41%	11,917
#9	4.07%	10,999
#10	5.94%	16,051
#11	9.92%	26,807
#12	8.90%	24,050

LEGEND:  
Small numbers, fine lines  
indicate Census Tracts.  
Large numbers, heavy lines  
indicate Police Districts.



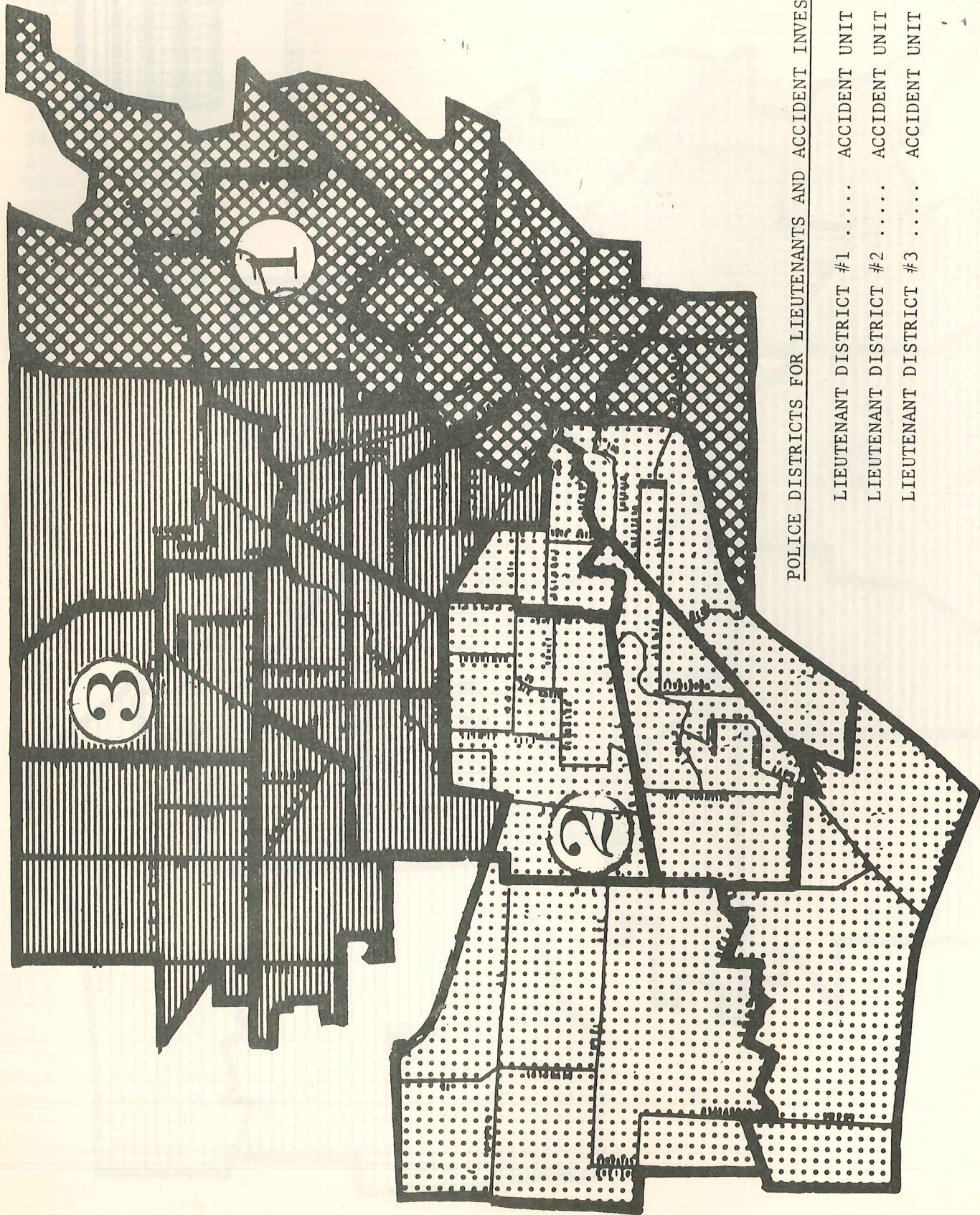
POLICE DISTRICTS FOR SELECTIVE ENFORCEMENT UNITS

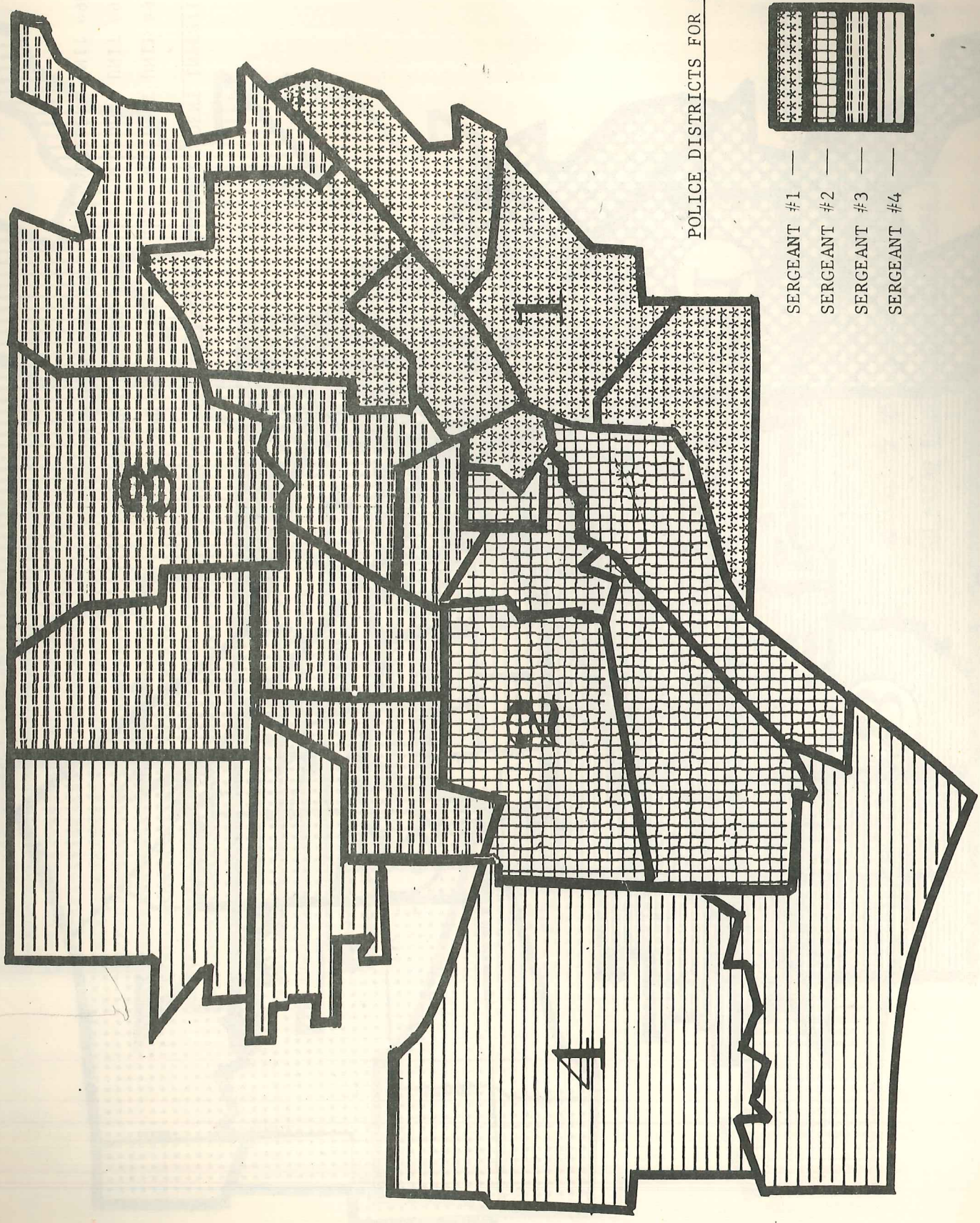
THESE SIX UNITS ARE USED PRIMARILY FROM 8:00 PM

UNTIL 4:00 AM... THE SELECTIVE STRENGTH DIRECTED

TO AREAS REQUIRING BACK-UP CARS TO SUPPLEMENT THE

REGULAR POLICE UNITS.





POLICE DISTRICTS FOR SERGEANTS

- SERGEANT #1 —
- SERGEANT #2 —
- SERGEANT #3 —
- SERGEANT #4 —



OFFENSES KNOWN TO THE POLICE BY  
CENSUS TRACT

TRACT	OFFENSES	RANK	TRACT	OFFENSES	RANK
28	4724	1	68	380	48
Unknown	2267	2	3	372	49
29	2087	3	12	371	50
25	1386	4	49	369	51
34	1307	5	7	355	52
27	1306	6	19	345	53
23	1241	7	72	330	54
22	1072	8	86	323	55
48	1037	9	31	293	56
26	1032	10	4	289	57
13	932	11	45-A	279	58
30	823	12	65	278	59
15	792	13	44	272	60
36	775	14	9	270	61
57	751	15	53	270	61
21	740	16	74	257	62
24	710	17	47-B	252	63
47-A	659	18	67	249	64
37	658	19	64	240	65
62	642	20	2	237	66
66	622	21	73	236	67
16	620	22	45-B	215	68
55	610	23	60	188	69
39	606	24	85	187	70
51	598	25	75	184	71
32	597	26	69	160	72
17	596	27	5	156	73
42	596	27	61	154	74
41	595	28	43-B	141	75
59	574	29	83	131	76
33	570	30	56	131	76
40	542	31	50	129	77
38	536	32	63	119	78
54	526	33	47	74	79
77	506	34	45	62	80
35	502	35	43-A	53	81
10	490	36	88	16	82
6	463	37	76	15	83
79	454	38	43	11	84
20	451	39	71	11	84
58	436	40	80	11	84
18	430	41	87	10	85
52	428	42	84	7	86
14	404	43	70	4	87
78	403	44	82	2	88
46	399	45	1	2	88
11	396	46	81	1	89
8	381	47			

TOTAL KNOWN OFFENSES 47,713

1966

JUVENILE OFFENSES KNOWN BY  
CENSUS TRACT

<u>TRACT</u>	<u>OFFENSES</u>	<u>RANK</u>	<u>TRACT</u>	<u>OFFENSES</u>	<u>RANK</u>
28	517	1	78	90	37
Unknown	264	2	12	86	38
62	247	3	20	84	39
48	228	4	32	80	40
25	211	5	35	76	41
13	208	6	19	74	42
15	204	7	49	74	42
29	203	8	18	71	43
22	176	9	14	70	44
27	173	10	74	70	44
39	165	11	9	68	45
23	160	12	73	67	46
42	159	13	65	64	47
26	157	14	33	63	48
6	154	15	72	63	48
51	153	16	4	62	49
47-A	152	17	64	62	49
59	151	18	46	61	50
21	149	19	45-B	60	51
79	149	19	44	59	52
55	141	20	69	59	52
57	141	20	2	58	53
34	134	21	31	58	53
66	131	22	60	54	54
30	127	23	47-B	54	54
36	126	24	53	52	55
40	126	24	61	47	56
52	121	25	85	43	57
58	121	25	56	37	58
24	120	26	75	32	59
16	119	27	67	31	60
38	118	28	43-B	30	61
10	117	29	63	27	62
17	112	30	5	20	63
45-A	111	31	50	17	64
41	110	32	43-A	15	65
54	110	32	83	14	66
77	108	33	76	8	67
86	108	33	87	6	68
37	97	34	88	6	68
3	95	35	70	3	69
7	94	36	80	3	69
68	94	36	82	2	70
8	90	37	84	2	70
11	90	37	71	1	71

TOTAL JUVENILE OFFENSES KNOWN 8,924

ARRESTS - MALE AND FEMALE - BY AGE GROUPS (Con'd.)

*down*

CLASS	25-29		30-34		35-39		40-44		45-49		50-54		55-59	
	M	F	M	F	M	F	M	F	M	F	M	F	M	F
<b>CLASS 1 OFFENSES</b>														
1. Criminal Homicide														
(a) Murder-Nonneg. Mnslghtr.	5	2	1	-	4	2	3	-	1	-	1	-	-	-
(b) Mnslghtr. by Negligence	4	-	1	-	3	-	1	-	-	-	1	-	-	-
2. Rape	3	-	1	-	-	-	-	-	-	-	-	-	-	-
3. Robbery	12	1	7	1	2	1	1	-	-	-	-	-	-	-
4. Aggravated Assault	7	1	3	1	2	2	6	-	3	1	2	-	-	-
5. Burglary, Breaking, etc.	25	-	12	-	8	-	4	-	1	-	-	-	1	-
6. Larceny - Theft	7	2	4	2	8	2	4	1	6	1	1	1	2	-
(a) \$50 & Over	33	29	22	20	24	20	30	15	25	12	18	16	14	12
(b) Under \$50	3	-	4	-	4	-	-	1	-	-	22	-	-	-
7. Auto Theft	99	35	55	24	55	27	49	17	36	14	22	17	17	12
Total Class 1 Offenses	117	10	101	10	74	7	60	3	36	6	17	1	11	-
<b>CLASS 2 OFFENSES</b>														
8. Other Assaults	8	1	4	-	4	-	4	-	3	-	1	-	1	-
9. Forgery & Counterfeiting	30	5	18	3	27	5	19	3	9	-	7	-	2	1
10. Embezzlement & Fraud	4	1	1	-	1	1	-	-	2	-	2	-	3	-
11. Stolen Property	8	-	11	1	6	1	7	2	2	-	5	-	-	-
12. Weapon Offenses	7	15	3	14	1	3	1	2	2	2	1	-	-	-
13. Commercialized Vice	17	-	15	-	11	-	18	-	6	-	3	-	5	-
14. Sex Offenses	43	5	46	1	47	1	22	1	14	-	4	-	1	-
15. Family Offenses	1	-	2	2	4	-	1	-	-	-	-	-	1	-
16. Narcotic Drug Law	10	5	11	6	12	9	6	4	14	1	1	1	1	-
17. State Liquor Law	363	47	390	39	488	87	613	46	498	63	487	45	378	18
18. Drunkenness	51	17	35	9	50	5	42	4	36	5	15	4	7	-
19. Disorderly Conduct	14	-	4	-	13	-	27	-	19	-	29	-	21	-
20. Vagrancy	33	3	20	3	39	2	46	3	35	5	22	3	24	3
21. Gambling	176	5	151	12	208	14	204	14	160	8	113	11	88	6
22. Driving Intoxicated	283	10	121	7	95	7	82	9	64	2	32	2	28	-
23. Road & Driving Laws	1	-	-	-	-	-	-	-	-	-	-	-	-	-
24. Parking Violations	114	13	56	8	51	7	47	4	44	1	22	2	10	-
25. Traffic Laws	170	21	141	24	101	16	91	7	77	5	35	2	18	3
26. All Other Offenses	1450	158	1130	139	1232	165	1290	100	1021	98	795	72	599	31
Total Class 2 Offenses	1609	207	1229	171	1329	207	1379	126	1084	118	935	93	629	44
<b>CLASS 3 OFFENSES</b>														
27. Suspicion	-	-	-	-	-	-	-	-	-	-	-	-	-	-
28. Federal Offenses	4	-	1	-	1	-	-	-	-	-	-	-	-	-
29. Non Offense Arrests	50	14	43	8	41	15	40	9	27	0	13	4	13	1
Total Class 3 Offenses	60	14	44	8	42	15	40	9	27	0	13	4	13	1
<b>GRAND TOTAL</b>	<b>1609</b>	<b>207</b>	<b>1229</b>	<b>171</b>	<b>1329</b>	<b>207</b>	<b>1379</b>	<b>126</b>	<b>1084</b>	<b>118</b>	<b>935</b>	<b>93</b>	<b>629</b>	<b>44</b>

## ARRESTS - MALE AND FEMALE - BY AGE GROUPS (Con'd.)

65

	60-64		& Over		TOTAL		GRAND TOTAL
	M	F	M	F	M	F	
<b>CLASS 1 OFFENSES</b>							
1. Criminal Homicide	1	-	-	-	17	5	22
(a) Murder-Nonneg. Mnslhtr.	-	-	2	-	19	2	21
(b) Mnslhtr. by Negligence	-	-	-	-	12	-	12
2. Rape	-	-	1	-	66	4	70
3. Robbery	-	-	-	-	36	5	41
4. Aggravated Assault	1	-	-	-	120	1	121
5. Burglary, Breaking, etc.	1	-	-	-	70	19	89
6. Larceny - Theft	4	11	8	5	278	243	521
(a) \$50 & Over	-	-	-	-	56	1	57
(b) Under \$50	7	12	11	5	674	280	954
7. Auto Theft	-	-	-	-	-	-	-
Total Class 1 Offenses	5	15	5	12	643	57	700
<b>CLASS 2 OFFENSES</b>							
8. Other Assaults	-	-	-	-	45	4	49
9. Forgery & Counterfeiting	2	-	-	-	153	31	184
10. Embezzlement & Fraud	-	-	-	-	23	6	29
11. Stolen Property	1	1	1	-	71	4	75
12. Weapon Offenses	-	-	-	-	21	75	96
13. Commercialized Vice	4	-	1	-	116	1	117
14. Sex Offenses	1	-	-	-	238	12	250
15. Family Offenses	-	-	-	-	14	4	18
16. Narcotic Drug Law	3	-	-	-	126	45	171
17. State Liquor Law	299	15	268	12	4540	432	4972
18. Drunkenness	11	-	13	-	419	79	498
19. Disorderly Conduct	12	1	16	-	171	6	177
20. Vagrancy	17	-	11	-	259	24	283
21. Gambling Intoxicated	43	1	32	1	1366	74	1440
22. Driving Intoxicated	12	1	18	-	1775	67	1842
23. Road & Driving Laws	-	-	-	-	2	-	2
24. Parking Violations	9	-	11	1	721	64	785
25. Traffic Laws	12	-	9	3	994	111	1105
26. All Other Offenses	431	20	392	19	11697	1096	12793
Total Class 2 Offenses	-	-	-	-	-	-	-
<b>CLASS 3 OFFENSES</b>							
27. Suspicion	14	2	17	5	365	92	457
28. Federal Offenses	14	2	17	5	415	92	507
29. Non Offense Arrests	-	-	-	-	-	-	-
Total Class 3 Offenses	452	34	420	29	12786	1468	14254
GRAND TOTAL							

*done*

cc-11 [Male & Female Arrests]

11/18  
7809  
3182  
126  
21

22236

x punch / punch  
11  
12

7  
8  
9

ARRESTS - BY PARTICIPATING UNITS  
6  
7  
8  
9  
10  
11  
12

1  
2  
3  
4  
5

CLASS 1 OFFENSES	SCOUT CREWS	PATROL WAGON	PATROL FOOT	DETS.	MORALS SQUAD	CYCLE OFFRS.	STNRY TRAF.	SPEC. POL.	TRAF. ACC.	CRIME PREV.	RANK OFFRS.	TOTAL
1. CRIMINAL HOMICIDE	6	2	1	12	1	-	-	-	1	-	-	23
A. MURDER-NONNEG.	-	-	-	-	3	-	-	-	17	2	-	22
B. MNSLGHTR. BY NEGLIGENCE	3	-	-	1	1	-	-	-	12	12	-	17
2. RAPE	15	4	4	29	4	1	-	-	10	64	-	131
3. ROBBERY	19	6	1	13	1	-	-	-	2	5	1	48
4. AGGRAVATED ASSAULT	34	20	2	35	6	-	-	-	19	377	10	503
5. BURGLARY, BREAKING, ETC.	15	17	6	30	5	-	-	11	4	111	-	199
6. LARCENY - THEFT	89	154	37	69	-	4	-	837	38	548	1	1777
A. \$50 & OVER	28	3	1	24	1	1	-	-	12	302	-	372
B. UNDER \$50	209	206	52	213	22	6	-	848	103	1421	12	3092
7. AUTO THEFT	209	206	52	213	22	6	-	848	103	1421	12	3092
TOTAL CLASS 1 OFFENSES	303	209	45	21	9	11	-	4	68	372	22	1064
8. OTHER ASSAULTS	5	9	1	32	-	-	-	-	2	7	-	56
9. FORGERY & COUNTERFEITING	49	34	6	71	11	1	-	4	6	10	3	195
10. EMBEZZLEMENT & FRAUD	8	1	-	12	1	-	-	-	5	23	-	50
11. STOLEN PROPERTY	35	23	8	2	5	-	-	1	14	94	2	184
12. WEAPON OFFENSES	2	1	-	1	90	-	-	1	2	-	1	98
13. COMMERCIALIZED VICE	14	5	1	6	20	-	-	4	4	157	2	209
14. SEX OFFENSES	104	101	12	4	-	1	-	4	12	6	6	250
15. FAMILY OFFENSES	1	1	-	-	15	-	-	1	-	-	-	18
16. NARCOTIC DRUG LAW	21	-	3	-	21	5	-	126	13	2	-	191
17. STATE LIQUOR LAW	1937	1466	797	35	94	53	-	25	604	23	18	5052
18. DRUNKENNESS	217	114	34	5	164	5	-	23	61	1691	5	2319
19. DISORDERLY CONDUCT	83	36	32	3	3	1	-	3	19	-	-	180
20. VAGRANCY	1	1	-	1	279	1	-	-	2	6	-	290
21. GAMBLING	542	311	30	4	3	55	1	3	475	-	30	1454
22. DRIVING INTOXICATED	1176	497	88	9	2	177	-	11	2547	21	12	4540
23. ROAD & DRIVING LAWS	-	170	-	-	3	54	-	28	2	9	3	1173
24. PARKING VIOLATIONS	386	170	29	12	3	54	2	315	269	1811	40	4157
25. TRAFFIC LAWS	913	644	82	38	30	11	4	549	4582	4232	144	21482
26. ALL OTHER OFFENSES	5797	3623	1168	256	750	374	7	-	-	-	-	-
TOTAL CLASS 2 OFFENSES	6334	4053	1254	601	788	383	7	1414	4769	5753	158	25514
CLASS 3 OFFENSES	-	-	-	-	-	-	-	-	-	-	-	-
27. SUSPICION	19	11	-	13	2	1	-	2	9	2	-	59
28. FEDERAL OFFENSES	309	213	34	119	14	2	-	15	75	98	2	881
29. NON-FEDERAL OFFENSES	328	224	34	132	16	3	-	17	84	100	2	940
TOTAL CLASS 3 OFFENSES	6334	4053	1254	601	788	383	7	1414	4769	5753	158	25514
GRAND TOTAL	6334	4053	1254	601	788	383	7	1414	4769	5753	158	25514

Elma

*Adults Only*

*(Male & Female)*

*Eva*

*1 punch 12 punch 11 12 Blank*

*COL 47*

ARRESTS - MUNICIPAL COURT DISPOSITIONS

	①	②	③	④	⑤	⑥	⑦	⑧	⑨	0	11	12	PEND- ING	TOTAL
	GUILTY AS CHG.	RE- LEAS- ED	DIS- CHG. ED	CONT. TO CALL	GRAND JURY	NO AFF. FILED	OFF DOCK- ET	DEL O. A.	ADULT STATE HOSP.	ADULT TO J. C.	DE CEAS- ED			
<b>CLASS 1 OFFENSES</b>														
1. CRIMINAL HOMICIDE	-	-	-	-	21	-	-	-	-	-	-	-	-	22
A. MURDER-NONNEG.	-	-	-	-	17	-	-	-	-	-	-	-	-	21
B. MNSLGHTR. BY NEGLIGENCE	-	-	-	-	12	-	-	-	-	-	-	-	-	12
2. RAPE	-	-	-	-	68	-	-	-	-	-	-	-	-	70
3. ROBBERY	-	-	-	-	29	-	-	-	-	-	-	-	-	41
4. AGGRAVATED ASSAULT	1	-	-	-	113	-	-	-	-	-	-	-	-	121
5. BURGLARY, BREAKING, ETC.	-	-	-	-	-	-	-	-	-	-	-	-	-	-
6. LARCENY - THEFT	-	-	-	-	-	-	-	-	-	-	-	-	-	-
A. \$50 & OVER	26	-	-	5	47	-	-	-	-	-	-	-	1	89
B. UNDER \$50	457	-	-	28	3	-	-	-	-	-	-	-	3	521
7. AUTO THEFT	31	-	-	7	11	-	-	-	-	-	-	-	-	57
TOTAL CLASS 1 OFFENSES	<u>515</u>	<u>29</u>	<u>42</u>	<u>321</u>	<u>334</u>	<u>7</u>	<u>34</u>	<u>3</u>	<u>2</u>	<u>2</u>	<u>4</u>	<u>2</u>	<u>4</u>	<u>954</u>
<b>CLASS 2 OFFENSES</b>														
8. OTHER ASSAULTS	421	-	-	132	-	-	-	-	-	-	-	-	-	700
9. FORGERY & COUNTERFEITING	-	-	-	1	42	-	-	-	-	-	-	-	-	49
10. EMBEZZLEMENT & FRAUD	77	-	-	25	40	-	-	-	-	-	-	-	-	184
11. STOLEN PROPERTY	7	-	-	-	17	-	-	-	-	-	-	-	-	29
12. WEAPON OFFENSES	16	-	-	1	52	-	-	-	-	-	-	-	-	75
13. COMMERCIALIZED VICE	89	-	-	-	1	-	-	-	-	-	-	-	-	96
14. SEX OFFENSES	34	-	-	1	71	-	-	-	-	-	-	-	-	117
15. FAMILY OFFENSES	158	-	-	23	12	-	-	-	-	-	-	-	-	250
16. NARCOTIC DRUG LAW	5	-	-	1	10	-	-	-	-	-	-	-	-	18
17. STATE LIQUOR LAW	133	-	-	10	-	-	-	-	-	-	-	-	-	171
18. DRUNKENNESS	4764	-	-	98	-	-	-	-	-	-	-	-	-	4972
19. DISORDERLY CONDUCT	454	1	-	17	1	-	-	-	-	-	-	-	-	498
20. VAGRANCY	159	-	-	9	-	-	-	-	-	-	-	-	-	177
21. GAMBLING	281	-	-	-	2	-	-	-	-	-	-	-	-	283
22. DRIVING INTOXICATED	1369	-	-	6	-	-	-	-	-	-	-	-	-	1440
23. ROAD & DRIVING LAWS	1785	-	-	8	-	-	-	-	-	-	-	-	-	1842
24. PARKING VIOLATIONS	2	-	-	-	-	-	-	-	-	-	-	-	-	2
25. TRAFFIC LAWS	701	-	-	7	4	-	-	-	-	-	-	-	-	785
26. ALL OTHER OFFENSES	596	-	-	116	18	-	-	-	-	-	-	-	-	1105
TOTAL CLASS 2 OFFENSES	<u>11051</u>	<u>1</u>	<u>244</u>	<u>455</u>	<u>270</u>	<u>10</u>	<u>337</u>	<u>3</u>	<u>12</u>	<u>6</u>	<u>12</u>	<u>168</u>	<u>4</u>	<u>12793</u>
<b>CLASS 3 OFFENSES</b>														
27. SUSPICION	-	-	-	-	-	-	-	-	-	-	-	-	-	-
28. FEDERAL OFFENSES	4	-	-	-	-	-	-	-	-	-	-	-	-	50
29. NON-FEDERAL OFFENSES	4	79	1	-	-	-	-	-	-	-	-	-	3	457
TOTAL CLASS 3 OFFENSES	<u>4</u>	<u>79</u>	<u>1</u>	<u>-</u>	<u>-</u>	<u>-</u>	<u>8</u>	<u>8</u>	<u>168</u>	<u>4</u>	<u>1</u>	<u>3</u>	<u>3</u>	<u>507</u>
GRAND TOTAL	<u>11570</u>	<u>80</u>	<u>274</u>	<u>497</u>	<u>591</u>	<u>17</u>	<u>379</u>	<u>239</u>	<u>174</u>	<u>243</u>	<u>15</u>	<u>175</u>	<u>175</u>	<u>14254</u>

*12236*  
*1842*  
*785*  
*14865*

Adults Only

Male & Female Adults

11 pm to 12 pm (12) 0 pm to 1 pm (11) Nothing

ARRESTS - MUNICIPAL COURT SENTENCES

	COSTS ONLY	FINE AND COSTS	DAYS AND COSTS	DAYS AND FINE	DAYS ONLY	VIOL. FINE ONLY	PEACE BOND	PRO-BATION	SEN-TENCE	OTHER PEND-ING	TOTAL
1. CRIMINAL HOMICIDE	-	-	-	-	-	-	-	-	1	21	22
A. MURDER-NONNEG. MNSLGHTR.	-	-	-	-	-	-	-	-	4	17	21
B. MNSLGHTR. BY NEGLIGENCE	-	-	-	-	-	-	-	-	-	12	12
2. RAPE	-	-	-	-	-	-	-	-	2	68	70
3. ROBBERY	2	-	-	-	-	-	-	-	10	29	41
4. AGGRAVATED ASSAULT	1	-	-	-	1	-	-	-	8	111	121
5. BURGLARY, BREAKING, ETC.	3	6	7	13	-	-	-	-	12	48	89
A. \$50 & OVER	10	113	64	238	-	-	-	41	49	6	521
B. UNDER \$50	2	1	13	11	-	-	-	5	14	11	57
7. AUTO THEFT	18	120	84	262	1	-	-	46	100	323	954
TOTAL CLASS 1 OFFENSES											

	COSTS ONLY	FINE AND COSTS	DAYS AND COSTS	DAYS AND FINE	DAYS ONLY	VIOL. FINE ONLY	PEACE BOND	PRO-BATION	SEN-TENCE	OTHER PEND-ING	TOTAL
8. OTHER ASSAULTS	56	104	59	137	3	-	67	36	223	15	700
9. FURGERY & COUNTERFEITING	1	-	-	-	-	-	-	-	6	42	49
10. EMBEZZLEMENT & FRAUD	9	16	16	34	-	-	-	9	54	46	184
11. STOLEN PROPERTY	2	2	-	5	-	-	-	-	3	17	29
12. WEAPON OFFENSES	-	9	2	5	-	-	-	-	7	52	75
13. COMMERCIALIZED VICE	2	5	70	11	1	-	-	-	2	5	96
14. SEX OFFENSES	-	1	16	13	-	-	-	4	10	73	117
15. FAMILY OFFENSES	14	2	70	8	-	-	1	72	64	19	250
16. NARCOTIC DRUG LAW	-	5	-	-	-	-	-	-	1	12	18
17. STATE LIQUOR LAW	1	104	5	21	-	-	-	2	37	1	171
18. DRUNKENNESS	751	2207	1037	624	68	-	-	82	148	55	4972
19. DISORDERLY CONDUCT	46	371	15	19	-	-	3	4	32	8	498
20. VAGRANCY	20	32	85	9	12	-	-	1	18	-	177
21. GAMBLING	25	236	1	19	-	-	-	-	-	2	283
22. DRIVING INTOXICATED	2	16	81	1270	-	-	-	2	39	30	1440
23. ROAD & DRIVING LAWS	231	1322	23	208	-	1	-	2	37	18	1842
24. PARKING VIOLATIONS	-	2	-	-	-	-	-	-	-	-	2
25. TRAFFIC LAWS	62	205	68	359	3	-	-	5	65	18	785
26. ALL OTHER OFFENSES	81	144	25	41	4	-	333	5	450	22	1105
TOTAL CLASS 2 OFFENSES	1303	4783	1573	2783	91	1	404	224	1196	435	12793

	COSTS ONLY	FINE AND COSTS	DAYS AND COSTS	DAYS AND FINE	DAYS ONLY	VIOL. FINE ONLY	PEACE BOND	PRO-BATION	SEN-TENCE	OTHER PEND-ING	TOTAL
27. SUSPICION	-	-	-	-	-	-	-	-	-	-	-
28. FEDERAL OFFENSES	-	-	-	-	-	-	-	-	-	-	50
29. NON-FEDERAL OFFENSES	-	2	1	-	-	-	-	1	450	3	457
TOTAL CLASS 3 OFFENSES	-	2	1	-	-	-	-	1	500	3	507
GRAND TOTAL	1321	4905	1658	3045	92	1	404	271	1796	761	14254

Elva

CC-74

## ADULT ARRESTS - MUNICIPAL COURT - INSTITUTIONS SENTENCED

	⑦ LUCAS COUNTY JAIL	⑧ WORK- HOUSE	⑨ CITY JAIL	opened NO INST.	Blank BOUND OVER TO GRAND JURY, PENDING	TOTAL
CLASS 1 OFFENSES						
1. Criminal Homicide				1	21	22
(a) Murder-Nonneg. Mnslgtr.	-	-	-	4	17	21
(b) Mnslgtr. by Negligence	-	-	-	-	12	12
2. Rape	-	-	-	2	68	70
3. Robbery	-	-	-	11	29	41
4. Aggravated Assault	1	-	-	6	115	121
5. Burglary, Breaking, etc.	-	-	-			
6. Larceny - Theft		7	-	34	48	89
(a) \$50 & Over	-	121	6	384	8	521
(b) Under \$50	2	2	-	43	11	57
7. Auto Theft	<u>1</u>	<u>2</u>	<u>-</u>	<u>43</u>	<u>11</u>	<u>57</u>
Total Class 1 Offenses	<u>4</u>	<u>130</u>	<u>6</u>	<u>485</u>	<u>329</u>	<u>954</u>
CLASS 2 OFFENSES						
8. Other Assaults	22	77	3	583	15	700
9. Forgery & Counterfeiting	-	-	-	7	42	49
10. Embezzlement & Fraud	2	28	-	108	46	184
11. Stolen Property	-	1	-	11	17	29
12. Weapon Offenses	-	1	-	21	53	75
13. Commercialized Vice	-	8	-	83	5	96
14. Sex Offenses	1	3	-	40	73	117
15. Family Offenses	-	26	2	203	19	250
16. Narcotic Drug Laws	-	-	-	6	12	18
17. State Liquor Laws	2	17	1	150	1	171
18. Drunkenness	217	408	16	4276	55	4972
19. Disorderly Conduct	13	11	-	466	8	498
20. Vagrancy	18	13	-	146	-	177
21. Gambling	2	17	-	262	2	283
22. Driving Intoxicated	5	25	-	1380	30	1440
23. Road & Driving Laws	35	37	-	1752	18	1842
24. Parking Violations	-	-	-	2	-	2
25. Traffic Laws	13	131	1	622	18	785
26. All Other Offenses	<u>35</u>	<u>25</u>	<u>1</u>	<u>1022</u>	<u>22</u>	<u>1105</u>
Total Class 2 Offenses	<u>365</u>	<u>828</u>	<u>24</u>	<u>11140</u>	<u>436</u>	<u>12793</u>
CLASS 3 OFFENSES						
27. Suspicion	-	-	-	-	-	-
28. Federal Offenses	-	-	-	50	-	50
29. Non-Offense Arrests	-	-	-	454	3	457
Total Class 3 Offenses	<u>-</u>	<u>-</u>	<u>-</u>	<u>504</u>	<u>3</u>	<u>507</u>
GRAND TOTAL	<u>369</u>	<u>958</u>	<u>30</u>	<u>12129</u>	<u>968</u>	<u>14254</u>



cc-79  
✓

*Blank*

ARRESTS - MUNICIPAL COURT LENIENCY

	(1) FINE SUSP.	(2) DAYS SUSP.	(3) BOTH SUSP.	Blank BOUND OVER TO GRAND JURY, PENDING	<i>opunch</i> OTHER	TOTAL
CLASS 1 OFFENSES						
1. Criminal Homicide						
(a) Murder-Nonneg. Mnslhtr.	-	7	-	21	1	22
(b) Mnslhtr. by Negligence	-	-	-	17	4	21
2. Rape	-	-	-	12	-	12
3. Robbery	-	-	-	68	2	70
4. Aggravated Assault	-	-	-	29	12	41
5. Burglary, Breaking, etc.	-	-	-	115	6	121
6. Larceny - Theft						
(a) \$50 & Over	9	5	-	48	27	89
(b) Under \$50	55	120	-	6	340	521
7. Auto Theft	3	17	-	12	25	57
Total Class 1 Offenses	<u>67</u>	<u>142</u>	<u>-</u>	<u>328</u>	<u>417</u>	<u>954</u>
CLASS 2 OFFENSES						
8. Other Assaults	9	109	-	16	566	700
9. Forgery & Counterfeiting	-	-	-	42	7	49
10. Embezzlement & Fraud	8	16	-	46	114	184
11. Stolen Property	1	3	-	17	8	29
12. Weapon Offenses	1	5	-	53	16	75
13. Commercialized Vice	67	8	-	5	16	96
14. Sex Offenses	-	26	-	73	18	117
15. Family Offenses	4	45	-	19	182	250
16. Narcotic Drug Laws	-	-	-	12	6	18
17. State Liquor Laws	3	5	-	1	162	171
18. Drunkenness	69	1231	6	55	3611	4972
19. Disorderly Conduct	1	22	-	8	467	498
20. Vagrancy	2	90	1	-	84	177
21. Gambling	-	3	-	2	278	283
22. Driving Intoxicated	68	1243	9	30	90	1440
23. Road & Driving Laws	1	190	3	19	1629	1842
24. Parking Violations	-	-	-	-	2	2
25. Traffic Laws	15	280	1	18	471	785
26. All Other Offenses	12	32	-	22	1039	1105
Total Class 2 Offenses	<u>261</u>	<u>3308</u>	<u>20</u>	<u>438</u>	<u>8766</u>	<u>12793</u>
CLASS 3 OFFENSES						
27. Suspicion	-	-	-	-	-	-
28. Federal Offenses	-	-	-	-	50	50
29. Non-Offense Arrests	-	-	-	3	453	457
Total Class 3 Offenses	<u>-</u>	<u>-</u>	<u>-</u>	<u>3</u>	<u>503</u>	<u>507</u>
GRAND TOTAL	<u>328</u>	<u>3451</u>	<u>20</u>	<u>769</u>	<u>9686</u>	<u>14254</u>

CHARGES AGAINST PERSONS - BY COMMON PLEAS COURT

	GUILTY AS CHARGED	NOT GUILTY	NO BILL REPORTED	INDICT. NOLLIED	PENDING INACTIVE	DEFENDANTS AWAITING TRIAL	TOTAL
<b>CLASS 1 OFFENSES</b>							
1. Criminal Homicide	11	1	2	1	6	-	21
(a) Murder-Nonneg. Mnslghtr.	7	2	5	-	3	-	17
(b) Mnslghtr. by Negligence	2	3	5	-	2	-	12
Rape	42	4	8	2	12	-	68
Robbery	16	-	6	-	7	-	29
Aggravated Assault	72	-	11	4	26	-	113
Burglary, Breaking, etc.							
6. Larceny - Theft	22	1	14	3	7	-	47
(a) \$50 & Over	3	-	-	-	-	-	3
(b) Under \$50	8	-	1	-	2	-	11
Auto Theft	183	11	52	10	65	-	321
Total Class 1 Offenses							
<b>CLASS 2 OFFENSES</b>							
8. Other Assaults	-	-	-	-	-	-	-
9. Forgery & Counterfeiting	27	1	3	2	9	-	42
10. Embezzlement & Fraud	24	-	6	6	4	-	40
11. Stolen Property	11	-	1	2	3	-	17
12. Weapon Offenses	32	-	7	-	13	-	52
13. Commercialized Vice	-	-	1	-	-	-	1
14. Sex Offenses	39	-	7	1	24	-	71
15. Family Offenses	4	-	4	1	3	-	12
16. Narcotic Drug Law	7	-	-	1	2	-	10
17. State Liquor Law	-	-	-	-	-	-	-
18. Drunkenness	-	-	-	-	-	-	-
19. Disorderly Conduct	1	-	-	-	-	-	1
20. Vagrancy	2	-	-	-	-	-	2
21. Gambling	-	-	-	-	-	-	-
22. Driving Intoxicated	-	-	-	-	-	-	-
23. Road & Driving Laws	-	-	-	-	-	-	-
24. Parking Violations	-	-	-	-	-	-	-
25. Traffic Laws	-	-	3	-	1	-	4
26. All Other Offenses	6	-	6	3	3	-	18
Total Class 2 Offenses	153	1	38	16	62	0	270
<b>CLASS 3 OFFENSES</b>							
27. Suspicion	-	-	-	-	-	-	-
28. Federal Offenses	-	-	-	-	-	-	-
29. Non Offense Arrests	0	0	0	0	0	0	0
Total Class 3 Offenses	0	0	0	0	0	0	0
GRAND TOTAL	336	12	90	26	127	0	591

PERSONS CHARGED - BY INSTITUTIONS SENTENCED

	OHIO PEN	OHIO STATE REFTY	OHIO WOMENS REFTY	LUCAS COUNTY JAIL	LIMA STATE HOSP.	NO INST.	PENDING	PAID AWAITING TRIAL	TOTAL
<b>CLASS 1 OFFENSES</b>									
1. Criminal Homicide	4	-	-	1	-	10	6	-	21
(a) Murder-Nonneg. Mnslghtr.	-	1	-	1	1	11	3	-	17
(b) Mnslghtr. by Negligence	-	-	-	1	-	9	2	-	12
2. Rape	11	17	-	-	-	27	12	-	68
3. Robbery	4	3	1	2	-	11	8	-	29
4. Aggravated Assault	10	16	-	3	2	56	26	-	113
5. Burglary, Breaking, etc.	2	4	-	5	-	30	6	-	47
6. Larceny - Theft	1	-	-	1	-	1	-	-	3
(a) \$50 & Over	1	2	-	1	-	5	2	-	11
(b) Under \$50	33	43	1	15	4	160	65	0	321
7. Auto Theft									
Total Class 1 Offenses									
<b>CLASS 2 OFFENSES</b>									
8. Other Assaults	-	-	-	-	-	-	-	-	-
9. Forgery & Counterfeiting	9	3	-	1	-	20	9	-	42
10. Embezzlement & Fraud	3	1	-	2	-	30	4	-	40
11. Stolen Property	2	-	-	-	-	12	3	-	17
12. Weapon Offenses	2	1	-	2	-	34	13	-	52
13. Commercialized Vice	-	-	-	-	-	1	-	-	1
14. Sex Offenses	7	6	-	4	2	28	24	-	71
15. Family Offenses	-	-	-	-	-	9	3	-	12
16. Narcotic Drug Law	2	-	-	-	-	6	1	1	10
17. State Liquor Law	-	-	-	-	-	-	-	-	-
18. Drunkenness	-	-	-	-	-	-	-	-	-
19. Disorderly Conduct	1	-	-	-	-	-	-	-	1
20. Vagrancy	-	-	-	-	-	-	-	-	-
21. Gambling	-	-	-	-	-	2	-	-	2
22. Driving Intoxicated	-	-	-	-	-	-	-	-	-
23. Road & Driving Laws	-	-	-	-	-	-	-	-	-
24. Parking Violations	-	-	-	-	-	-	-	-	-
25. Traffic Laws	-	-	-	-	-	3	1	-	4
26. All Other Offenses	1	11	0	9	2	13	3	1	18
Total Class 2 Offenses	27	43	0	24	2	158	61	2	270
<b>CLASS 3 OFFENSES</b>									
27. Suspicion	-	-	-	-	-	-	-	-	-
28. Federal Offenses	-	-	-	-	-	-	-	-	-
29. Non Offense Arrests	0	0	0	0	0	0	0	0	0
Total Class 3 Offenses	0	0	0	0	0	0	0	0	0
GRAND TOTAL	60	54	1	24	6	318	126	2	591

CRIME PREVENTION BUREAU

<u>COMPLAINTS RECEIVED</u>	6,529	5,949	6,222	5,536	5,614
----------------------------	-------	-------	-------	-------	-------

DISPOSITIONS

Cleared by Arrest	1,309	1,306	1,294	1,084	1,007
Exceptionally Cleared	3,044	2,793	2,626	2,249	2,130
Inactive	1,213	1,115	1,420	1,314	1,448
Unfounded	188	147	205	225	186
Special Investigations	<u>775</u>	<u>588</u>	<u>677</u>	<u>661</u>	<u>843</u>

TOTAL DISPOSITIONS	<u>6,529</u>	<u>5,949</u>	<u>6,222</u>	<u>5,536</u>	<u>5,614</u>
--------------------	--------------	--------------	--------------	--------------	--------------

ARRESTS BY CPB MEMBERS

Juveniles cited to court	2,293	2,341	2,301	1,850	1,681
Juvenile cases adjusted, detained, warned and released	<u>3,454</u>	<u>3,568</u>	<u>3,678</u>	<u>3,162</u>	<u>3,007</u>

TOTAL JUVENILE ARRESTS	5,747	5,909	5,979	5,012	4,688
------------------------	-------	-------	-------	-------	-------

ADULT ARRESTS	<u>268</u>	<u>282</u>	<u>339</u>	<u>286</u>	<u>249</u>
---------------	------------	------------	------------	------------	------------

TOTAL ARRESTS	<u>6,015</u>	<u>6,191</u>	<u>6,318</u>	<u>5,298</u>	<u>4,937</u>
---------------	--------------	--------------	--------------	--------------	--------------

DETENTION OF ADULT FEMALES  
IN CITY JAIL

	1,470	1,366	1,224	1,319	1,203
--	-------	-------	-------	-------	-------

---

CC-15

KNOWN OFFENSES BY MONTH OF OCCURRENCE (JUVENILES)

	JAN.	FEB.	MARCH	APRIL	MAY	JUNE	JULY	AUG.	SEPT.	OCT.	NOV.	DEC.	TOTAL
<b>CLASS 1 OFFENSES</b>													
1. CRIMINAL HOMICIDE	-	-	-	-	-	-	-	-	-	-	1	1	2
30 A. MURDER-NONNEG. MNSLGHTR.	-	-	-	-	-	1	-	-	-	-	-	-	1
31 B. MNSLGHTR. BY NEGLIGENCE	-	-	-	-	-	-	1	-	-	-	-	-	5
2. RAPE	2	4	-	5	4	-	3	3	-	3	2	1	27
3. ROBBERY	-	-	-	-	-	1	-	-	1	1	1	2	7
4. AGGRAVATED ASSAULT	11	8	14	20	14	19	12	16	4	17	17	12	164
5. BURGLARY, BREAKING, ETC.	3	4	4	4	6	8	6	8	3	6	5	1	58
6. LARCENY - THEFT	53	50	62	54	72	69	76	83	57	78	62	86	802
32 A. \$50 & OVER	20	10	10	11	14	15	13	11	16	18	12	11	157
33 B. UNDER \$50	89	77	87	94	110	113	111	121	81	125	101	114	1223
<b>TOTAL CLASS 1 OFFENSES</b>	175	171	202	206	186	260	266	301	229	268	217	214	2695
<b>CLASS 2 OFFENSES</b>													
8. OTHER ASSAULTS	19	12	17	21	15	31	22	25	37	14	25	6	244
9. FORGERY & COUNTERFEITING	1	-	1	2	1	-	2	-	1	-	-	1	7
10. EMBEZZLEMENT & FRAUD	3	1	1	-	-	1	-	-	-	-	2	1	9
11. STOLEN PROPERTY	3	2	-	-	1	1	2	2	-	6	1	-	18
12. WEAPON OFFENSES	9	4	4	16	13	20	9	7	11	7	5	1	106
13. COMMERCIALIZED VICE	-	1	-	-	-	-	-	-	-	1	-	-	2
14. SEX OFFENSES	5	6	4	2	6	7	5	4	12	8	4	7	70
15. FAMILY OFFENSES	-	-	-	-	-	-	-	-	-	-	-	-	-
16. NARCOTIC DRUG LAW	-	-	-	-	-	-	4	-	-	-	-	-	-
17. STATE LIQUOR LAW	-	3	1	-	-	1	4	-	1	-	8	2	20
18. DRUNKENNESS	-	4	10	7	3	5	8	2	11	13	13	4	80
19. DISORDERLY CONDUCT	51	56	92	83	110	68	66	72	63	78	68	51	858
20. VAGRANCY	1	-	-	-	-	-	4	2	1	1	1	-	3
21. GAMBLING	-	-	-	-	-	-	3	-	3	1	-	-	7
22. DRIVING INTOXICATED	-	2	1	-	1	2	3	-	-	1	-	1	14
23. ROAD & DRIVING LAWS	175	171	202	206	186	260	266	301	229	268	217	214	2695
24. PARKING VIOLATIONS	-	-	-	-	-	-	-	-	-	-	-	-	-
25. TRAFFIC LAWS	16	14	26	21	35	54	39	57	30	42	30	24	388
26. ALL OTHER OFFENSES	192	192	225	223	295	272	222	249	250	300	196	131	2747
<b>TOTAL CLASS 2 OFFENSES</b>	475	468	583	581	666	722	652	721	649	739	570	442	7298
<b>CLASS 3 OFFENSES</b>													
27. SUSPICION	-	-	-	-	-	-	-	-	-	-	-	-	-
28. FEDERAL OFFENSES	1	1	1	1	-	2	-	1	-	1	-	1	9
29. NON-FEDERAL OFFENSES	14	39	40	36	33	28	54	71	26	26	32	25	424
<b>TOTAL CLASS 3 OFFENSES</b>	15	40	41	37	33	30	54	72	26	27	32	26	433
<b>GRAND TOTAL</b>	579	585	711	712	809	865	817	914	756	891	703	582	8924

43

BUREAU OF IDENTIFICATION AND RECORDS

<u>AUTO TOWS AND RELEASES</u>	9,582	9,299
-------------------------------	-------	-------

CASE RECORDS PROCESSED

Records received from FBI	539	577
Indictments posted	745	746
Dispositions posted	7,877	6,785
Record requests from County Prosecutor	750	759
Requests from other authorities	110	126
Records sent to County Prosecutor	544	547
Character Letters	125	166
Taxi applicants checked	142	69

COMMUNICATIONS

TWX - in and out	3,550	2,124
Long distance phone calls	285	158

<u>COMPLAINTS PROCESSED</u>	56,854	50,912
-----------------------------	--------	--------

FINGERPRINTS

Total on file 12-31-1965	424,684	423,601
Sent to other agencies	2,667	2,531
Received from other agencies	284	395
Extra prints and photos mailed	1,261	298
Employee applicants fingerprinted	922	820
Unknown dead identified by prints	8	14

IDENTIFICATION PROCESSING

3 x 5 Criminal indexes since 1905	518,577	513,873
Criminal files since 1905	172,121	170,754
New subjects	1,083	1,110
Re-arrests	1,212	1,345
Wanted elsewhere - arrested locally	68	42
Recidivist checked thru files	14,314	12,004
Names file checked police clearance	21,749	14,729

PHOTOGRAPHS

4 x 5 Prints	21,968	24,328
Dead and murdered photographs	28	36
8 x 10 enlargements	976	1,219
City employees photographed	538	554
Photos added to M.O. File	109	113

HOMICIDE SQUAD INVESTIGATIONS

	<u>1966</u>	<u>1965</u>	<u>1964</u>	<u>1963</u>	<u>1962</u>	<u>1961</u>	<u>1960</u>	<u>1959</u>
Murder-Non-Negligent Manslaughter	26	20	10	11	15	10	11	6
Percentage Cleared by Arrest	92.3	100%	90.0	90.9	93.3	80.0	100%	83.3

<u>SUICIDES</u>	<u>1966</u>	<u>1965</u>	<u>1964</u>	<u>ATTEMPTS</u>	<u>1966</u>	<u>1965</u>	<u>1964</u>
Asphyxiation	1	3	0		7	4	13
Burning	1	0	0		0	1	0
Carbon Monoxide	11	17	5		7	8	4
Cut Wrist-Throat	2	1	0		43	34	58
Drowning	5	1	1		0	1	5
Gunshot	13	19	13		1	7	3
Hanging	6	3	9		3	9	3
Jumping Off Buildings, etc.	2	0	2		2	4	7
Pills and Medication	9	10	7		360	327	297
Poisons	2	0	1		11	14	9
Train or Motor Vehicle	0	0	0		1	1	1
<b>T O T A L S</b>	<b>52</b>	<b>54</b>	<b>38</b>		<b>435</b>	<b>410</b>	<b>400</b>

<u>INVESTIGATIONS</u>	<u>1966</u>	<u>1965</u>	<u>1964</u>	<u>CLEARED BY</u> <u>ARRESTS</u>	<u>1966</u>	<u>1965</u>	<u>1964</u>
Personal Injury, Illness	963	1229	985		467	598	324
A & B, Threats	2284	1931	1650		693	582	514
Aggravated Assault	401	331	310		99	105	84
Homicides	28	20	10		21	23	11
Suicides	52	54	38		0	0	0
Attempt Suicides	435	410	400		50	58	79
Coroner's Cases	194	248	213		0	0	0
Concealed Weapons	50	62	38		52	68	40
Confiscated Weapons	360	343	318		189	151	140
Miscellaneous Cases	493	342	336		272	88	136
<b>T O T A L S</b>	<b>5260</b>	<b>4970</b>	<b>4298</b>		<b>1843</b>	<b>1673</b>	<b>1328</b>

**INACTIVE CASES**                      7.2%      5.2%      4.5%

MORALS SQUAD ACTIVITIES

ARRESTS	<u>1966</u>	<u>1965</u>
Keeping a Gambling Room	34	29
Gambling and Loitering in a Gambling Room	288	255
Illegal Possession of Numbers Slips	107	103
Prostitution and Using a Room for Immoral Purposes	83	60
Health Holders	76	46
Narcotic Law Violations	20	20
Liquor Law Violations	51	57
All Other Offenses	<u>295</u>	<u>314</u>
TOTAL ARRESTS	<u>954</u>	<u>884</u>
INVESTIGATIONS		
Assists to other Division Members	430	455
Co-operative Investigations with other Law Enforcement Agencies	395	305
Liquor Law Investigations	420	375
Communication and Correspondence Investigations	300	345
Surveillances, area patrol and Spot Checking	<u>9,495</u>	<u>10,698</u>
TOTAL INVESTIGATIONS	<u>11,040</u>	<u>12,178</u>
COURT APPEARANCES	1,015	989



CRIME DETECTION LABORATORYANNUAL REPORT

<u>POLYGRAPH EXAMINATIONS</u>	<u>1966</u>	<u>1965</u>	<u>1964</u>	<u>1963</u>	<u>1962</u>
Number of Subjects Tested	174	194	257	290	283
Number of Subjects Cleared	83	97	120	137	153
Responses and Confessions	37	44	63	65	70
Responses and No Confessions	30	41	47	36	49
Test Refusals	24	12	27	52	11

BOMBS AND EXPLOSIVES

Bomb, etc., Calls Investigated	64	98	53	65	20
Dynamite Disposal (Sticks)	7	6	6	13	82
Blasting Caps - Disposal	144	100	139	97	200
Hand Grenades - Disposal	6	24	6	4	18
Simulted Bombs - Disposal	1	5	3	3	3

DOCUMENT EXAMINATIONS

Received for Examination	92	94	63	133	92
--------------------------	----	----	----	-----	----

FIREARMS

Weapons Examined	349	351	224	258	239
Shot and Powder Patterns	12	10	30	27	9

PHOTOGRAPHY

Black and White	30	0	56	60	120
Color	430	580	164	220	268

TOXICOLOGICAL ANALYSES

Blood Alcohol Determinations	273	250	231	197	169
Carbon Monoxide Determinations	31	38	19	32	10
Miscellaneous Poisons	8	10	3	5	6

CHEMICAL RESPIRATION OF SERIAL NUMBERS

Guns, Bicycles, Motors, etc.	13	7	8	10	6
------------------------------	----	---	---	----	---

STAIN ANALYSES

Blood, Semen, etc.	36	28	24	27	35
--------------------	----	----	----	----	----

CRIME DETECTION LABORATORYANNUAL REPORTPage 2

<u>ARTICLES MARKED TO BE PLANTED</u>	<u>1966</u>	<u>1965</u>	<u>1964</u>	<u>1963</u>	<u>1962</u>
Anthracene, Dyes, etc.	58	39	25	22	52
<u>CASTS</u>					
Dermal Nitrate	22	30	27	28	14
Foot Prints	19	29	27	21	13
Tool Marks	36	46	27	34	86
<u>LIQUOR ANALYSES</u>					
Beer, Wine, Whiskey	24	28	23	13	14
<u>NARCOTICS</u>					
Opiates, Marijuana, etc.	50	53	43	59	25
<u>BURGLAR TOOLS</u>					
Submitted for Examination	30	42	43	40	22
<u>MISCELLANEOUS EXAMINATIONS</u>					
Hair, Fibers, etc.	49	51	36	49	22
<u>DRUNK-O-METER REPORT</u>					
Total Number of Subjects	1253	1180	1068	955	906
<u>COURT APPEARANCES</u>					
Common Pleas, Municipal	87	113	87	51	36

POLICE COMMUNICATIONS BUREAU , ANNUAL REPORT - 1966

Area of the City of Toledo ( in square miles ) ..... 85.57  
 Population of the City of Toledo ..... 394,000  
 Districts for Scout and Patrol Units ..... 21

ACTIVITIES FOR EACH SHIFT .....

	<u>7 AM x 3 PM</u>	<u>3 PM x 11 PM</u>	<u>11 PM x 7 AM</u>	<u>TOTAL</u>
Scout and Patrol Units on Duty .....	21	21	21	270,233
Answered Calls-for-Service ( All types ) .....	84,999	99,033	86,201	205,519
Answered Calls-for-Service ( Important ) .....	71,916	80,082	53,521	2,943
Answered Calls Resulting in Arrest .....	641	1,303	999	3,233
Arrests Resulting .....	715	1,441	1,077	1,961,328
Total Messages Broadcast to Radio Units .....	591,945	768,260	601,123	7,020
Private Ambulances Dispatched by Police .....	2,291	2,828	1,901	0
Transmitter Failure ... ( Time inoperable )	0	0	0	0

TOTAL, ANSWERED CALLS-FOR-SERVICE ..... (includes PRIVATE AMBULANCES) ..... 277,253

TIME LOST DURING REGULAR PATROL SERVICE ..... REASONS THEREFOR ... 1966

	<u>7 AM x 3 PM</u>	<u>3 PM x 11 PM</u>	<u>11 PM x 7 AM</u>	<u>TOTAL</u>
Serving Warrants .....	156.7 hrs	123.9 hrs	38.8 hrs	319.4 hrs
Repairs and Service on Cars .....	131.6 hrs	46.6 hrs	23.2 hrs	201.4 hrs
Repairs on Car Radio Equipment .....	34.3 hrs	.9 hrs	0 hrs	35.2 hrs
Traffic Duty .....	381.3 hrs	294.9 hrs	48.4 hrs	724.6 hrs
Court Attendance ( During Tour of Duty	151.0 hrs	111.6 hrs	0	262.6 hrs
Special Assignments ( Payrolls, Fires, Public Meetings, etc.) .....	553.5 hrs	532.4 hrs	200.5 hrs	1,286.4 hrs
Strike Duty .....	248.6 hrs	162.7 hrs	22.6 hrs	433.9 hrs
Guarding Recovered Cars .....	29.5 hrs	45.3 hrs	39.2 hrs	114.0 hrs
Washing Cars and Equipment .....	221.9 hrs	120.9 hrs	0	342.8 hrs
Revolver Range .....	203.6 hrs	0	0	203.6 hrs
GRAND TOTALS, TIME LOST	2,112.0 hrs	1,439.2 hrs	372.7 hrs	3,923.9 hrs

TOTAL TIME LOSS IS EQUIVALENT TO LOSS OF A TWO-MAN UNIT ( 24 HOUR OPERATION ) FOR 163 DAYS, 4 HOURS and 23 MINUTES.

DISTRIBUTION OF POLICE MOBILE EQUIPMENT

<u>ASSIGNMENT</u>	<u>1966</u>	<u>1965</u>	<u>1964</u>
Radio Service	0	2	2
Scout Crews	24	24	19
Patrol Wagons	13	12	12
Cruisers:			
Detectives	31	31	28
Crime Prevention	23	19	16
Selective Traffic	29	24	20
Morals Squad	4	4	4
Command Autos	13	13	10
Officials Autos	15	12	11
Accident Investigation	3	3	3
Tow Trucks	3	3	3
Boat - Harbor Patrol	1	1	1
Motorcycles	11	9	9
<b>TOTAL VEHICLES</b>	<u>170</u>	<u>157</u>	<u>138</u>

MODEL AND TYPE OF VEHICLES

Boat	1	1	1
1961 Buick Sedan	1	1	1
1964 Buick Sedan	2	2	2
1965 Buick Sedan	1	1	0
1962 Chrysler	0	1	1
1958 Ford Station Wagon	0	0	1
1960 Ford Sedan	0	0	2
1961 Ford Sedan	0	2	16
1962 Ford Sedan	0	0	19
1963 Ford Sedan	17	22	22
1964 Ford Sedan	27	34	48
1965 Ford Sedan	50	69	0
1966 Ford Sedan	46	0	0
1960 Ford Tow Truck	2	2	2
1964 Willys Tow Truck	0	0	1
1966 Willys Tow Truck	1	1	0
1961 Ford Patrol Wagon	0	2	2
1965 Ford Patrol Wagon	1	0	0
1963 G.M.C. Patrol Wagon	0	4	4
1966 Dodge Patrol Wagon	6	0	0
1962 International Wagon	0	1	1
1963 International Wagon	2	2	3
1964 Dodge Wagon	1	2	2
1958 G.M.C. Bus	1	1	1
1959 Harley Motorcycle	2	2	4
1961 Harley Motorcycle	3	3	3
1965 Harley Motorcycle	4	4	2
1966 Harley Motorcycle	2	0	0
<b>TOTAL</b>	<u>170</u>	<u>157</u>	<u>138</u>

Gasoline - Gallons	467,893	387,354	341,886
Oil - Quarts	10,947	11,788	12,035
Grease - Pounds	1,563	317	189
Anti-Freeze - Quarts	1,656	1,148	1,055
Tires	379	625	436
Batteries	102	100	109
Accidents - Police Autos	189	146	151
Supply Cost	\$133,873.50	\$127,337.07	\$112,483.56
Repair & Service Costs	\$106,042.35	\$113,225.80	\$106,218.90
Overhead	\$ 49,686.63	\$ 53,229.82	\$ 47,798.90
Total Miles Traveled in	3,939,696	3,227,514	2,991,085

PROPERTY ROOM

	<u>1966</u>	<u>1965</u>	<u>1964</u>
Estimated Merchandise Recovered	\$147,963.00	\$139,061.90	\$ 85,481.00
Estimated Merchandise Returned	<u>118,000.00</u>	<u>113,000.00</u>	<u>56,242.00</u>
Estimated Merchandise Pending	29,963.00	26,061.90	29,239.00
Money Recovered	66,986.88	18,098.29	14,814.99
Disbursements	<u>57,000.00</u>	<u>16,000.29</u>	<u>13,314.72</u>
Pending	9,986.88	2,098.00	1,500.27

Money paid to the Police Pension Fund from auction sales and confiscated money during 1964, 1965 and 1966.

Sale of Impounded Autos (Discontinued May 1, 1964)	\$ 000.00	\$ 000.00	\$ 1,679.83
Sale of Tires	101.00	103.50	161.38
Sale of Scrap Metals	16.75	12.40	6.50
Confiscated Money	246.00	151.00	581.88
Auction Sales	<u>2,395.50</u>	<u>2,970.00</u>	<u>2,637.00</u>
TOTAL	<u>\$ 2,759.25</u>	<u>\$ 3,236.90</u>	<u>\$ 5,066.59</u>

ANNUAL REPORT OF THE TOLEDO POLICE ACADEMYCADET CLASS

The twenty-seventh class of the Toledo Police Academy was appointed April 1, 1966, and graduated on June 30, 1966. The class consisted of twenty-one recruits; all members of the Toledo Police Division.

CHARACTER INVESTIGATIONS

One hundred and sixty one character investigations were made by the academy staff. These investigations concerned persons on police and fire eligibility lists.

IN-SERVICE TRAINING

The following in-service training courses were held in 1966:

A special eleven-session In-Service Training Course on Procedures of the Detective Bureau and Investigations was conducted at the academy. Seventy-one officers attended 1,336 hours of training.

The Federal Bureau of Investigation used the academy to present a four-day program for command officers. Thirty-nine officers attended 324 hours of training.

Training Key Film Strips and Sound Recordings were shown at 126 roll calls covering various phases of police work.

FIREARMS TRAINING

The Police Combat Training Pistol Range, used as a facility in training police personnel, was ready for use in April and was in use up to October 31, 1966.

The program included several new techniques in combat firing. Three new positions included are prone, sitting and kneeling. A new Seven Yard Hip Course was included with emphasis on speed and accuracy in firing weapons. Small arms and shot gun training is included.

Since the implementation of the above shooting techniques there has been an increased degree of enthusiasm in the training program and our police personnel have acquired a greater accuracy and feeling of self-confidence in the handling of their weapons.

## RESEARCH

Constant changes in the law and court rulings demands a continuous search of all available sources of information to keep abreast in modern police work. The academy is a source of information and assistance to the officers with their problems and they freely call upon the academy staff to obtain answers to their problems.

## PUBLIC RELATIONS

The academy staff members made twenty-two public addresses before church, school, civic and service organizations. They held nine film showings and three tours of police facilities. These efforts reached 3,200 Toledo residents. The staff appeared twice on television and once on a radio program featuring various police activities.



TOTAL TRAFFIC ACCIDENTS BY TYPE

	TOTAL ACCIDENTS		PERSONS KILLED		PERSONS INJURED	
	1966	1965	1966	1965	1966	1965
Collision of Motor vehicle with:						
1. Ran off Roadway	1213	1146	10	7	406	391
2. Overtuned in Roadway	5	13	1		1	4
3. Pedestrians	593	670	19	19	596	662
4. Other Motor vehicle	14127	14891	32	24	2884	3155
5. Parked Motor vehicle	3535	2986		1	215	184
6. Railroad Train	27	33		1	6	16
7. Bicycles	246	231	1		100	120
8. Animal	5	5			1	
9. Fixed Object	142	79		3	39	12
10. Other Object	79	58			7	10
11. Other Non-Collision	<u>182</u>	<u>198</u>	<u>1</u>	<u>1</u>	<u>100</u>	<u>106</u>
TOTAL	20154	20310	64	56	4355	4660

DIRECTIONAL ANALYSIS

## Two Motor Vehicle

Intersection Accidents

	<u>1966</u>	<u>1965</u>
1. Entering at angle.....	3671	4033
2. From same direction-both going straight.....	2286	3917
3. Same-One turn-One straight.....	862	1095
4. Same-One stopped.....	2340	966
5. Same-All Others.....	698	593
6. From opposite direction-both straight.....	333	364
7. Same-One left turn-one straight.....	429	425
8. Same-All others.....	34	13
9. Not Stated.....	<u>3</u>	<u>          </u>
TOTAL	10656	11406

## Two-Motor Vehicle

Non-Intersection Accidents

1. Opposite Direction-both moving.....	306	234
2. Same direction-both moving.....	1261	1821
3. One car parked.....	2809	2302
4. One car stopped in traffic.....	1034	563
5. One car entering parked position.....	38	14
6. One car leaving parked position.....	204	208
7. One car entering alley or driveway.....	712	997
8. One car leaving alley or driveway.....	626	318
9. All others.....	27	19
10. Not Stated.....	<u>          </u>	<u>1</u>
TOTAL	7017	6477

All other accidents

1. Collision with non-motor vehicle-train-street car-bicycle, etc., at intersection.....	136	121
2. Same-not at intersection.....	119	147
3. Collision with fixed object in roadway at intersection.....	72	33
4. Same-not at intersection.....	92	47
5. Overturned in roadway-at intersection.....	24	7
6. Same-not at intersection.....	28	8
7. Left roadway-at intersection.....	461	465
8. Left roadway-at curve not at intersection.....	87	62
9. Left roadway on straight road-not at intersection.....	559	579
10. Fell from moving vehicle.....	70	71
11. All Others.....	238	217
12. Not Stated.....	<u>2</u>	<u>          </u>
TOTAL	1888	1757

TYPE OF MOTOR VEHICLE

<u>TYPE</u>	<u>1966</u>	<u>1965</u>
1. Passenger Car.....	35713	36373
2. Same and Trailer or House Trailer.....	19	11
3. Truck.....	1498	387
4. Truck Tractor and Semi-Trailer.....	276	241
5. Other Truck Combination.....	679	1506
6. Farm Tractor and or equipment.....	2	
7. Taxicab.....	90	102
8. Bus.....	212	204
9. School Bus.....	11	
10. Motorcycle.....	257	224
11. Motor Scooter or motor bicycle.....	21	
12. Not Stated.....	<u>1024</u>	<u>389</u>
TOTAL VEHICLES	39802	39435

LOCALITY OF ACCIDENTS

1. Apartments, Stores and Factories.....	12271	12532
2. One Family Homes.....	6891	6782
3. Farm-Fields.....	355	382
4. No Marginal Development.....	637	612
5. Not Stated.....	<u>        </u>	<u>2</u>
TOTAL ACCIDENTS	20154	20310

LIGHT CONDITIONS

1. Daylight.....	12743	13261
2. Dusk or Dawn.....	970	851
3. Darkness.....	6435	6195
4. Not Stated.....	<u>6</u>	<u>3</u>
TOTAL ACCIDENTS	20154	20310

PEDESTRIAN MOVEMENTS

	<u>1966</u>	<u>1965</u>
1. Crossing or Entering-at Intersection.....	187	171
2. Same-not at Intersection.....	345	376
3. Walking in Roadway-with Traffic.....	10	15
4. Same-Against Traffic.....	6	10
5. Standing in Roadway.....	8	16
6. Getting on or off other Vehicle.....	9	13
7. Pushing or Working on Vehicle in Roadway.....	1	4
8. Other Working in Roadway.....	5	4
9. Playing in Roadway.....	20	21
10. Other in Roadway.....	7	8
11. Not in Roadway.....	14	42
12. Not Stated.....	3	2
<b>TOTAL PEDESTRIAN MOVEMENTS</b>	<b>615</b>	<b>682</b>

FIVE YEARS OF ACCIDENTS IN TOLEDO

<u>YEAR</u>	<u>TOTAL ACCIDENTS</u>	<u>PERCENT INCREASE DECREASE</u>	<u>NON - INJ ACC</u>	<u>PERCENT INCREASE DECREASE</u>	<u>INJ. ACC</u>	<u>PER INJR ACC.</u>	<u>FATAL ACC.</u>	<u>PERCENT INCREASE DECREASE</u>
1962	14351	0.3 inc.	12154	0.4 inc.	2169	0.4 dec.	28	even
1963	16212	11.4 inc.	13742	11.5 inc.	2443	11.3 inc.	27	.04 dec.
1964	18506	12.4 inc.	15629	12. inc.	2841	14. inc.	36	25. inc.
1965	20310	8.8 inc.	17292	9.6 inc.	2962	4. inc.	56	35.5 inc.
1966	20154	0.77dec.	17392	0.58inc.	2702	9.6 dec.	60	7.1 inc.

DAYLIGHT AND DARKNESS ACCIDENTS

<u>Year</u>	<u>1962</u>				<u>1965</u>			
	<u>DAYLIGHT DAWN</u>		<u>NON INJ</u>		<u>DAYLIGHT</u>		<u>DARKNESS DUSK</u>	
	<u>FATAL</u>	<u>INJ</u>	<u>INJ</u>	<u>TOTAL</u>	<u>FATAL</u>	<u>INJ</u>	<u>INJ</u>	<u>TOTAL</u>
1962	12	1489	8579	10080	16	680	3575	4271
1963	13	1598	9732	11343	14	845	4010	4869
1964	16	1849	10617	12482	20	992	5012	6024
1965	29	1900	11757	13686	27	1062	5535	6624
1966	23	1722	11482	13227	37	980	5910	6927

<u>YEAR</u>	<u>ACCIDENTS</u>	<u>PERCENT DAYLIGHT</u>	<u>PERCENT DARKNESS</u>
1962	14351	70.2	29.8
1963	16212	69.9	30.1
1964	18506	67.4	32.6
1965	20310	67.3	32.7
1966	20154	65.6	34.4

NOTE: 38.3 of the Fatal Accidents occurred during Daylight; 61.7 during Night Season.

DAY OF WEEK

	<u>1966</u>	<u>1965</u>
1. Monday.....	2429	2598
2. Tuesday.....	2693	2392
3. Wednesday.....	2834	2575
4. Thursday.....	2688	2901
5. Friday.....	3533	4096
6. Saturday.....	3684	3470
7. Sunday.....	<u>2293</u>	<u>2288</u>
<b>TOTAL ACCIDENTS</b>	<b>20154</b>	<b>20310</b>

TIME ACCIDENTS HAPPENED

<u>TIME PERIOD</u>			
<u>Hour of Day</u>			
1.	12:00 Midnight.....	607	488
2.	1:00 AM to 1:59 AM.....	446	457
3.	2:00 AM " 2:59AM.....	480	414
4.	3:00 AM " 3:59 AM.....	244	201
5.	4:00 AM " 4:59 AM.....	107	98
6.	5:00 AM " 5:59 AM.....	103	81
7.	6:00 AM " 6:59 AM.....	358	271
8.	7:00 AM " 7:59 AM.....	760	796
9.	8:00 AM " 8:59 AM.....	879	903
10.	9:00 AM " 9:59 AM.....	603	639
11.	10:00 AM " 10:59 AM.....	750	792
12.	11:00 AM " 11:59 AM.....	993	1013
13.	12:00 Noon " 12:59 PM.....	1027	1037
14.	1:00 PM " 1:59 PM.....	1067	1091
15.	2:00 PM " 2:59 PM.....	1144	1103
16.	3:00 PM " 3:59 PM.....	1772	1750
17.	4:00 PM " 4:59 PM.....	1763	1829
18.	5:00 PM " 5:59 PM.....	1577	1754
19.	6:00 PM " 6:59 PM.....	1131	1073
20.	7:00 PM " 7:59 PM.....	995	1039
21.	8:00 PM " 8:59 PM.....	906	919
22.	9:00 PM " 9:59 PM.....	808	879
23.	10:00 PM " 10:59 PM.....	686	683
24.	11:00 PM " 11:59 PM.....	748	696
25.	Not Stated.....	<u>200</u>	<u>304</u>
<b>TOTAL ACCIDENTS</b>		<b>20154</b>	<b>20310</b>

ACCIDENTS BY MONTHS OF YEAR

<u>MONTH</u>	<u>1966</u>				<u>1965</u>			
	<u>FATAL</u>	<u>INJ. ACC.</u>	<u>PROPERTY DAMAGE</u>	<u>TOTAL</u>	<u>FATAL</u>	<u>INJ. ACC.</u>	<u>PROPERTY DAMAGE</u>	<u>TOTAL</u>
Jan.	6	223	1494	1723	5	195	1572	1772
Feb.	3	242	1475	1720	4	198	1543	1745
Mar.	8	223	1364	1595	2	233	1558	1793
Apr.	8	262	1453	1723	2	199	1311	1512
May	7	270	1342	1619	6	256	1301	1563
June	2	214	1167	1383	3	277	1261	1541
July	6	189	1286	1481	7	221	1226	1454
Aug.	6	212	1222	1440	7	254	1300	1561
Sept.	0	214	1293	1507	2	247	1279	1528
Oct.	4	218	1430	1652	6	289	1584	1879
Nov.	7	195	1565	1767	7	270	1528	1805
Dec.	3	240	2301	2544	5	323	1829	2157
TOTAL	60	2702	17392	20154	56	2962	17292	20310

FIVE YEARS OF MOVING VEHICLE VIOLATIONS  
CONVICTIONSENFORCEMENT INDEX

<u>YEAR</u>	<u>TOTAL ARR FOR MOV. VIOL.</u>	<u>TOTAL SUCH CONV.</u>	<u>PER CENT OF TOTAL CONV.</u>	<u>TOTAL FATAL AND INJURY ACCIDENTS</u>	<u>RATIO IN THE PER CENT OF ACCIDENTS</u>
1962	31282	29671	95	2169	13.6
1963	34351	31534	92	2470	12.8
1964	40901	37526	90	2877	13.4
1965	47825	43799	92	3018	14.9
1966	58249	52706	91	2762	13.7

SEX OF DRIVERS INVOLVED

	<u>1966</u>	<u>1965</u>
Male Drivers.....	24751	26069
Female Drivers.....	7945	7805
Not Stated.....	<u>4442</u>	<u>5561</u>
<b>TOTAL DRIVERS INVOLVED</b>	<b>37138</b>	<b>39435</b>

DRIVER VIOLATIONS

1. Speed too fast.....	625	625
2. Failed to Yield Right-of-Way.....	2896	3106
3. Drove Left of Center.....	289	323
4. Improper Overtaking.....	465	640
5. Passed Stop Sign.....	134	135
6. Disregarded Traffic Signal.....	498	606
7. Followed too closely.....	2695	3623
8. Made Improper Turn.....	630	809
9. Other Improper Driving.....	8051	8154
10. Inadequate Brakes.....	172	218
11. Improper Lights.....	35	22
12. Had been drinking.....	<u>941</u>	<u>1071</u>
<b>TOTAL VIOLATIONS</b>	<b>17431</b>	<b>19332</b>

Drivers in Violation.....	17431	19332
Drivers Not in Violation.....	19707	20103
Not Stated.....	-----	-----
<b>TOTAL DRIVERS</b>	<b>37138</b>	<b>39435</b>

Accidents Involving a Violation.....	17431	19332
Accidents Not Involving A Violation.....	2723	978
Not Stated.....	-----	-----
<b>TOTAL ACCIDENTS</b>	<b>20154</b>	<b>20310</b>

PEDESTRIAN DIRECTIONAL ANALYSIS

	<u>1966</u>	<u>1965</u>
1. Car Going Straight.....	534	544
2. Car Turning Right.....	6	23
3. Car Turning Left.....	25	34
4. Car Backing.....	12	26
5. All Others.....	<u>16</u>	<u>43</u>
	593	670

RESIDENCE OF DRIVERS

1. Resident of City.....	27179	28010
2. Resident Within Metropolitan District.....	3414	3802
3. Resident Elsewhere.....	2223	2599
4. Not Stated.....	<u>4322</u>	<u>5024</u>
TOTAL DRIVERS INVOLVED	37138	39435

AGE OF DRIVER

1. Under - 16 years - License Age.....	164	227
2. 16 Years to 19 Years.....	4930	4643
3. 20 Years to 24 Years.....	5082	4974
4. 25 Years to 34 Years.....	6088	6325
5. 35 Years to 44 Years.....	5778	6074
6. 45 Years to 54 Years.....	4420	4723
7. 55 Years to 64 Years.....	3027	3305
8. 65 Years and Over.....	1727	1928
9. Not Stated.....	<u>5922</u>	<u>7336</u>
TOTAL DRIVERS	37138	39435

ROAD CONDITION AND WEATHER

1. Road Dry.....	12339	12512
2. Road Wet.....	5653	5861
3. Road Snowy - Icy.....	2161	1932
4. Other - Not Stated.....	<u>1</u>	<u>5</u>
	20154	20310



PARKING VIOLATIONS TAG RECAPITULATION

1966

Meter Zone . . . . .	43,883
Keys in Car. . . . .	101
Alley. . . . .	467
Double Parking . . . . .	287
Restricted Zone. . . . .	27,008
Limited Area . . . . .	10,327
Building Line. . . . .	1,005
Left Side. . . . .	918
Miscellaneous. . . . .	<u>473</u>
TOTAL TAGS HUNG BY OFFICERS	84,469

The Traffic Bureau mailed 18,818 letters to parking violators who failed to appear in the required time. A total of 1,133 letters were returned, and therefore, the violator was not notified. The Bureau made out 18,818 warrants against violators who failed to appear in answer to the letter notice.

SUMMARY OF FINES

	<u>1966</u>	<u>1966</u>	<u>1965</u>	<u>1965</u>
<u>CLASSIFICATION</u>	<u>FINES</u>	<u>AMOUNT</u>	<u>FINES</u>	<u>AMOUNT</u>
\$1.00	30523	\$ 30523.00	32368	32368.00
\$2.00 (Del)	11163	22326.00	12605	25210.00
\$5.00	16431	82155.00	14630	73150.00
\$7.50 (Del)	5513	41347.50	5279	30592.00
\$7.00	144	1008.00	126	882.00
\$10.00 (Del)	52	520.00	57	570.00
Tows	2010	11529.50	2263	12446.50
Storage	-----	-----	-----	-----
Accidents	10064	10064.00	8531	8531.00
Airport	931	1598.00	1105	1681.00
Overpayment	2	4.00		
TOTAL VIOLATORS				
FINES IN BUREAU	76831	\$201075.00	76964	\$194430.50
TOTAL FINES COLLECTED FROM VIOLATORS		\$201075.00		\$194430.50
TOTAL FINES ASSESSED BY TRAFFIC COURT		\$845791.44		\$624047.83
TOTAL COLLECTIONS PARKING METERS		\$174162.93		\$176717.55
TOTAL TRAFFIC REVENUE		\$1221029.37		\$995195.88

PARKING METER REGULATION REPORT

<u>MONTHS</u>	<u>TAGS ISSUED</u>	<u>MONEY COLLECTED</u>
January	4,642	\$ 22,181.00
February	4,323	19,748.00
March	4,828	23,126.50
April	3,472	16,893.50
May	3,416	15,191.50
June	3,350	14,711.50
July	2,973	13,443.00
August	3,612	11,977.50
September	3,831	16,831.50
October	3,079	15,968.50
November	3,233	15,658.00
December	<u>3,124</u>	<u>15,344.50</u>
TOTAL	<u>43,883</u>	<u>\$201,075.00</u>

Totals for 1965	47,364	\$176,717.55
-----------------	--------	--------------

SUMMARY METER SERVICE SHEET

Meter Complaints	3,611
Complaints Not Justified	1,268
Complaints Justified	2,343

<u>MONTH</u>	<u>METER COMPLAINT</u>	<u>COMPLAINTS NOT JUSTIFIED</u>	<u>COMPLAINTS JUSTIFIED</u>
January	404	178	226
February	409	164	245
March	299	110	189
April	318	88	230
May	295	106	189
June	243	118	125
July	266	98	168
August	257	60	197
September	155	76	79
October	338	137	201
November	268	58	210
December	<u>359</u>	<u>75</u>	<u>284</u>
TOTAL	<u>3,611</u>	<u>1,268</u>	<u>2,343</u>

RADAR ACTIVITIES

<u>MONTH</u>	<u>1966</u>	<u>1965</u>
January . . . . .	746	416
February . . . . .	681	356
March . . . . .	674	464
April . . . . .	725	561
May . . . . .	739	605
June . . . . .	678	619
July . . . . .	609	686
August . . . . .	696	669
September . . . . .	699	729
October . . . . .	712	606
November . . . . .	602	673
December . . . . .	<u>510</u>	<u>695</u>
TOTAL . . . . .	<u>8,071</u>	<u>7,079</u>

Annual 1966

Moving Violations - Municipal Court OUTCOME

"Card Column 72"

Violns Charged	Curr. Violn	Carry Over	( 1 )	( 2 )	( 3 )	( 4 )	( 5 )	( 6 )	( 7 )	( 8 )	( 9 )	( 0 )	( X )	( Y )
1-Red Lights 21-05-05	6735	4	2035		15	27		4125	63	215				259
2-Speeding 21-06-01	15618	17	7035		29	33		7241	71	721				505
3-Opr W/O Due Regd 21-06-08	4663	23	3722		49	102	6		87	515				205
4-Drive Indr InPlnc 21-06-09	1485	19	1244		19	12	39		10	16				164
5-Improper Turns 21-07(1 to 7)	4815	4	1463		12	17		2976	17	147				187
6-One Way Streets 21-08-02	1199		356		2	5		721	19	38				58
7-Driver Lic.Violn 21-09-01	5613	26	2500	1745	14	45		147	58	695				435
8-Crowding Driver 21-09-02	35		21					6		5				3
9-Right of Way 21-09 (3 to 5)	2539	11	2193		27	34			27	193				76
10-Left Side Street 21-09-09	337	1	206		4	11		51	20	34				12
11-Safety Stops 21-10 (1 to 11)	4454	2	1076		7	13		2997	53	156				154
12-Truck On Blvd. 21-20-15	97		39		2	2		43	3	3				5
13-Lic.Plate Violn 21-21-01	1125	1	886		7	14			21	113				85
14-Improper Lights 21-24 (3 to 17)	2200	3	901		2	10		970	21	155				144
15-Excessive Noise 21-22-05	3056	3	1444		12	18		1039	21	347				178
16-Miscellaneous	3379	5	2551		28	39		254	52	311				149
17-Hit Skip 21- 4-3	899	9	688		24	34			23	67				72
TOTALS	58249	128	28360	1745	253	416	45	20570	566	3731				2691

## CODE:

1-Guilty as charged	4-Cont'd Indef'nty	7-Off docket	0-State Inst'n delivery
2-Off docket, Had Lic.	5-Glty, Lesser Offns	8-Juvenile Del'd	X-Adult to Juvenile Ct.
3-Discharged	6-Paid Clerk's Offc	9-Del'd to O. A.	y-Pending, B. W., etc.

Annual

1966

Moving Violations - Municipal Court SENTENCES

Viol'ns Charged	Card Col.#77		"Y"	"X"	Card Columns 73-74								
	Curr. Violn	Carry Over	Fine Only	Fine and Costs	Fine &/or Costs Susp'd	Even Days Comtd	Odd Days Susp'd	21	Probated	Pendg B.W.	Bal. Other	29	Traff Schl.
1-Red Lights 21-05-05	6735	4	4376	1651	133					259	320		
2-Speeding 21-06-01	15618	17	7690	5793	570	152	71			505	854		
3-Opr W/O Due Regd 21-06-08	4663	23	290	3113	296	11	11	1	205	759			
4-Drve Undr Inflnc 21-06-09	1485	19		24	1	1192	25	2	164	96			
5-Improper Turns 21-07(1 to 7)	4815	4	3183	1157	99					187	193		
6-One Way Streets 21-08-02	1199		778	280	19					58	64		
7-Driver Lic.Violn 21-09-01	5613	26	313	738	330	760	498	8	435	2557			
8-Crowding Driver 21-09-02	35		12	13	2					3	5		
9-Right of Way 21-09 (3 to 5)	2539	11	215	1818	159	1	1			76	280		
10-Left Side Street 21-09-09	337	1	79	152	25	1				12	69		
11-Safety Stops 21-10 (1 to 11)	4454	2	3125	864	83			1	154	229			
12-Truck on Blvd. 21-20-15	97		50	28	4					5	10		
13-Lic.Plate Violn 21-21-01	1125	1	302	509	74		1			85	155		
14-Improper Lights 21-24 (3 to 17)	2200	3	1190	603	76	2				144	188		
15-Excessive Noise 21-22-05	3056	3	1190	1125	168					178	398		
16-Miscellaneous	3379	5	597	2011	181	10	6			149	430		
17-Hit-Skip 21-04-03	899	9	78	494	88	19	9			72	148		
<b>TOTALS</b>	<b>58249</b>	<b>128</b>	<b>23468</b>	<b>20373</b>	<b>2308</b>	<b>2148</b>	<b>622</b>	<b>12</b>	<b>2691</b>	<b>6755</b>			

MOVING VIOLATIONS - MUNICIPAL COURT LICENSE SUSPENSIONS

VIOLATIONS CHARGED	1-29		30-59		60-89		90		DAYS		6 MOS.		1 YR.		YRS OVER		1-3		3-5		5 YRS.		PENDING
	CARR. DAYS	CARRY OVER	DAYS	DAYS	DAYS	DAYS	DAYS	DAYS	DAYS	DAYS	DAYS	DAYS	DAYS	DAYS	DAYS	DAYS	DAYS	DAYS	DAYS	DAYS	DAYS	DAYS	
1-Red Lights	6735	4	23	38	16	7	33	-	-	-	-	-	-	-	-	-	-	16	-	-	-	6347	259
2-Speeding	15618	17	225	351	123	92	215	3	4	-	-	-	-	-	-	-	-	41	1	1	14075	505	
3-Operating Without Due Regard for Safety	4663	23	64	126	77	68	389	1	7	-	-	-	-	-	-	-	-	35	-	-	-	3714	205
4-Driving Under the Influence	1485	19	-	4	3	5	526	106	97	-	-	-	-	-	-	-	-	364	-	-	-	235	164
5-Improper Turns	4815	4	6	19	3	8	26	-	-	-	-	-	-	-	-	-	-	8	-	-	-	4562	187
6-One Way Streets	1199	-	3	1	1	2	4	-	-	-	-	-	-	-	-	-	-	3	-	-	-	1127	58
7-Driver License Violation	5613	26	1	2	3	5	63	16	9	-	-	-	-	-	-	-	-	26	-	-	-	5079	435
8-Crowding Driver	35	-	1	3	-	-	1	-	-	-	-	-	-	-	-	-	-	-	-	-	-	27	3
9-Right of Way	2539	11	9	21	13	11	124	-	3	-	-	-	-	-	-	-	-	2	-	-	-	2291	76
10-Left Side of Street	337	1	2	3	5	1	14	-	-	-	-	-	-	-	-	-	-	-	-	-	-	301	12
11-Safety Stops	4454	2	12	16	4	3	12	-	-	-	-	-	-	-	-	-	-	-	-	-	-	4255	154
12-Trunk on Boulevard	97	-	-	-	-	-	-	-	-	-	-	-	-	-	-	-	-	-	-	-	-	92	5
13-License Plate Violation	1125	1	1	-	-	1	-	-	-	-	-	-	-	-	-	-	-	-	-	-	-	1039	85
14-Improper Lights	2200	3	1	1	1	-	1	-	-	-	-	-	-	-	-	-	-	-	-	-	-	2055	144
15-Excessive Noise	3056	3	7	9	2	3	3	-	-	-	-	-	-	-	-	-	-	-	-	-	-	2857	178
16-Miscellaneous	3379	5	16	30	9	18	83	-	-	-	-	-	-	-	-	-	-	5	-	-	-	3074	149
17-Hit Skip	899	9	2	2	2	2	15	1	2	-	-	-	-	-	-	-	-	-	-	-	-	810	72

TOTALS	58249	128	373	626	262	226	1509	127	122	0	500	1	51940	2691
--------	-------	-----	-----	-----	-----	-----	------	-----	-----	---	-----	---	-------	------



MOVING VIOLATIONS - MUNICIPAL COURT JUDGES

VIOLATIONS CHARGED	CURRENT VIOLATION	CARRY-OVER	FOSTER.	GLASSER	DEEDS	DESHETLER	RILEY	FRANKLIN	BAME	PENDING BENCH WARRANT
			5	2	3	5	6	8	9	
1-Red Lights	6735	4	215	1040	904	1107	1427	675	1112	259
2-Speeding	15618	17	721	2194	2144	2555	3343	1770	2403	505
3-Operating Without Due Regard for Safety	4663	23	515	665	705	702	692	486	716	205
4-Driving Under the Influence	1485	19	16	262	312	242	218	150	140	164
5-Improper Turns	4815	4	147	718	698	857	1013	462	737	187
6-One Way Streets	1199	-	38	158	177	208	248	112	200	58
7-Driver License Violation	5613	26	695	707	807	680	857	631	827	435
8-Crowding Driver	35	5	4	4	2	7	4	4	6	3
9-Right of Way	2539	11	193	357	409	364	419	312	420	76
10-Left Side of Street	337	1	34	48	51	43	66	34	50	12
11-Safety Stops	4454	2	156	638	641	742	1010	416	699	154
12-Trunk on Boulevard	97	-	3	10	11	8	22	16	22	5
13-License Plate Violation	1125	1	113	183	133	145	220	103	144	85
14-Improper Lights	2200	3	155	307	292	322	422	236	325	144
15-Excessive Noise	3056	3	347	417	398	443	527	342	407	178
16-Miscellaneous	3379	5	311	477	497	476	537	390	547	149
17-Hit Skip	899	9	67	126	154	135	129	108	117	72
21-04-3										
TOTALS	58249	128	3731	8311	8335	9036	11154	6247	8872	2691

I N D E X

ADMINISTRATIVE STAFF AND UNIT COMMAND . . . . . 1

ACADEMY . . . . . 53-54

ARRESTS (See Persons Charged)

BUDGET . . . . . 8

BUREAU OF IDENTIFICATION & RECORDS 44

COMMUNICATIONS BUREAU . . . . . 49-50  
     Service Calls, Distribution of . 17

CRIME PREVENTION BUREAU . . . . . 40  
     Departmental (Juvenile Arrests)  
         Cited and Adjusted . . . . . 40-41  
         Juvenile Offenses by . . . . .  
             Month of Occurrence . . . . . 43  
         Juvenile Offenses by  
             Census Tract . . . . . 22  
         Juvenile Arrests - Sex & Age . . . 27  
         Missing Persons . . . . . 42

CRIME DETECTION LABORATORY . . . . 47-48

HOMICIDE - SUICIDE REPORT . . . . . 45

KNOWN OFFENSES  
     Census Tract Map . . . . . 16  
     Census Tract . . . . . 21-22  
     Month of Occurrence . . . . . 13-14-43  
     Percent Cleared . . . . . 10  
     Property Value . . . . . 23-24-25-26  
     Time of Day Occurred . . . . . 15  
     Unfounded and Cleared . . . . . 9  
     Crime Index Trend . . . . . 11  
     Crime Index Trend-National . . . . 12  
     Rate Per Population . . . . . 10

LETTER OF TRANSMITTAL

MAPS  
     Service Calls, Distribution of . 17  
     District . . . . . 18  
     Lieutenants Districts . . . . . 19  
     Sergeants Districts . . . . . 20

MORALS SQUAD ACTIVITIES . . . . . 46

MOTOR VEHICLE - POLICE  
     Inventory, Distribution and  
     Cost . . . . . 51

ORGANIZATIONAL CHARTS  
     Police . . . . . 4  
     Civilian . . . . . 7

PERSONNEL  
     Promotions . . . . . 2  
     Retirements & Resignations . . . . 3  
     Salary and Distribution (Police) . 5  
     Service and Age, by Rank . . . . . 6  
     Salary and Distribution (Civilian) 5

PERSONS CHARGED  
     Age Groups . . . . . 27-28-29-30  
     Common Pleas Court Disposition . 38  
     Cost of Feeding . . . . . 8  
     Guilty-Not Guilty Pleas . . . . . 38  
     Indictment and No Bills . . . . . 38  
     Institutions Sentenced to . . . . . 36-39  
     Juveniles . . . . . 27-43  
     Municipal Court Dispositions . . . 34  
     Municipal Court Leniency . . . . . 37  
     Municipal Court Sentences . . . . . 35  
     Number Charged . . . . . 27 28-29-30  
     Participating Units . . . . . 33  
     Race . . . . . 31-32  
     Sex (Adult) . . . . . 28-29-30  
     Sex (Juvenile) . . . . . 27

PROPERTY STOLEN AND RECOVERED  
     Value by Month . . . . . 24  
     Value of Offenses . . . . . 25  
     Value by Type . . . . . 25-26  
     Value-Five Year Comparison . . . . 23

PROPERTY ROOM REPORT . . . . . 52

RADIO & COMMUNICATIONS BUREAU. 49-50

TRAFFIC BUREAU - ACCIDENTS  
     Rate for Five Years . . . . . 58  
     Day of Week . . . . . 59  
     Daylight-Darkness Analysis . . . . 57-58  
     Directional Analysis . . . . . 56  
     Drivers Involved . . . . . 61-62  
     Light Conditions . . . . . 57-58  
     Locality of Accident . . . . . 57  
     Month of Occurrence . . . . . 60  
     Motor Vehicle Type Involved . . . . 55-57  
     Pedestrian Analysis . . . . . 58-62  
     Persons Killed & Injured . . . . . 55

ROAD AND WEATHER CONDITIONS . . . 62  
     Time . . . . . 59  
     Total Accidents . . . . . 55  
     Type of Accident - Total . . . . . 61  
     Type of Vehicle . . . . . 57

MOVING VIOLATIONS  
     Five Year Comparison  
         (Enforcement Index) . . . . . 60  
     Disposition by Municipal Court . 68  
     Disposition by Sentence . . . . . 69  
     Disposition by Final Judge . . . . 71  
     License Suspensions . . . . . 70  
     Radar Enforcement . . . . . 67

PARKING  
     Tag Recapitulation . . . . . 63  
     Meter Fines . . . . . 65  
     Meter Service Complaints . . . . . 66  
     Summary of Fines . . . . . 64  
     Meter Regulation Report . . . . . 65

